



Fort Bend County Engineering  
FORT BEND COUNTY, TEXAS

Richard W. Stolleis, P.E.  
County Engineer

July 25, 2018

Commissioner W. A. "Andy" Meyers  
Fort Bend County Precinct 3  
22333 Grand Corner Drive  
Katy, Texas 77494

**RE: Bella Terra Parkway at Shops at Bella Terra Access Drive – Multi-Way Stop Control**

Dear Commissioner Meyers:

The Fort Bend County Engineering Department has completed a review of the operational conditions at the intersection of Bella Terra Parkway at the Shops at Bella Terra Access Drive (private street) in response to a request for multi-way stop control. The intersection currently operates with stop control on the Shops at Bella Terra Access Drive. Bella Terra Parkway has a posted speed of 35 mph and is identified as a Collector in the 2015 Fort Bend County Major Thoroughfare Plan.

Traffic counts were collected and used to evaluate the intersection for multi-way stop control based on the warrants specified in the Texas Manual on Uniform Traffic Control Devices. Based on the data collected, traffic volumes warrant multi-way stop control at the intersection. The multi-way stop control worksheet and updated traffic control plan are attached.

Based on the above results, Engineering recommends the conversion of the intersection to multi-way stop control. If you have any questions please do not hesitate to contact me at 281-633-7528 or [chris.debaillon@fortbendcountytexas.gov](mailto:chris.debaillon@fortbendcountytexas.gov).

Regards,

Chris Debaillon, PE, PTOE  
Assistant County Engineer – Traffic

CD/mjs

cc: Judge Robert E. Hebert, County Judge  
Marc Grant - FBC Road & Bridge  
Brian Fields - Signage Department  
File

Attachments

301 Jackson St., 4<sup>th</sup> Floor | Richmond, TX 77469  
Phone 281-633-7500 \* Fax 281-633-7545

# All-Way Stop Warrant Analysis Summary

2011 Texas Manual on Uniform Traffic Control Devices All-Way Stop Warrants



Survey Date: 1/23/2018 Precinct 3

Fort Bend County Engineering

Streets	Speeds:	85th Pct.	Posted
Major	Bella Terra Pkwy	34	30
Minor	Shops at Bella Terra	-	0

### Eight Highest Hours:

Hour	Major St.	Minor St.
	Veh. Total	Unit Total
18:00	467	318
19:00	402	297
12:00	336	275
13:00	315	261
16:00	457	241
17:00	479	240
14:00	341	234
11:00	327	210
<b>Average</b>	<b>391</b>	<b>260</b>

### Required Average Vehicle Volumes:

Major St. - Both Approaches			Minor St. - Both Approaches		
<b>100%</b>	80%	70%	<b>100%</b>	80%	70%
<b>300</b>	240	210	<b>200</b>	160	140

80% Condition used when there have been 4 or more crashes susceptible to correction by an all-way stop in a 12-month period

70% Condition used when major street posted or 85th percentile speed exceeds 40 mph

Eight-Hour Average Vehicular Volume Warrant Satisfied? Yes

Is a traffic signal warranted and are arrangements being made for its installation? No

Have there been 5 or more crashes susceptible to correction by an all-way stop in a 12-month period? No

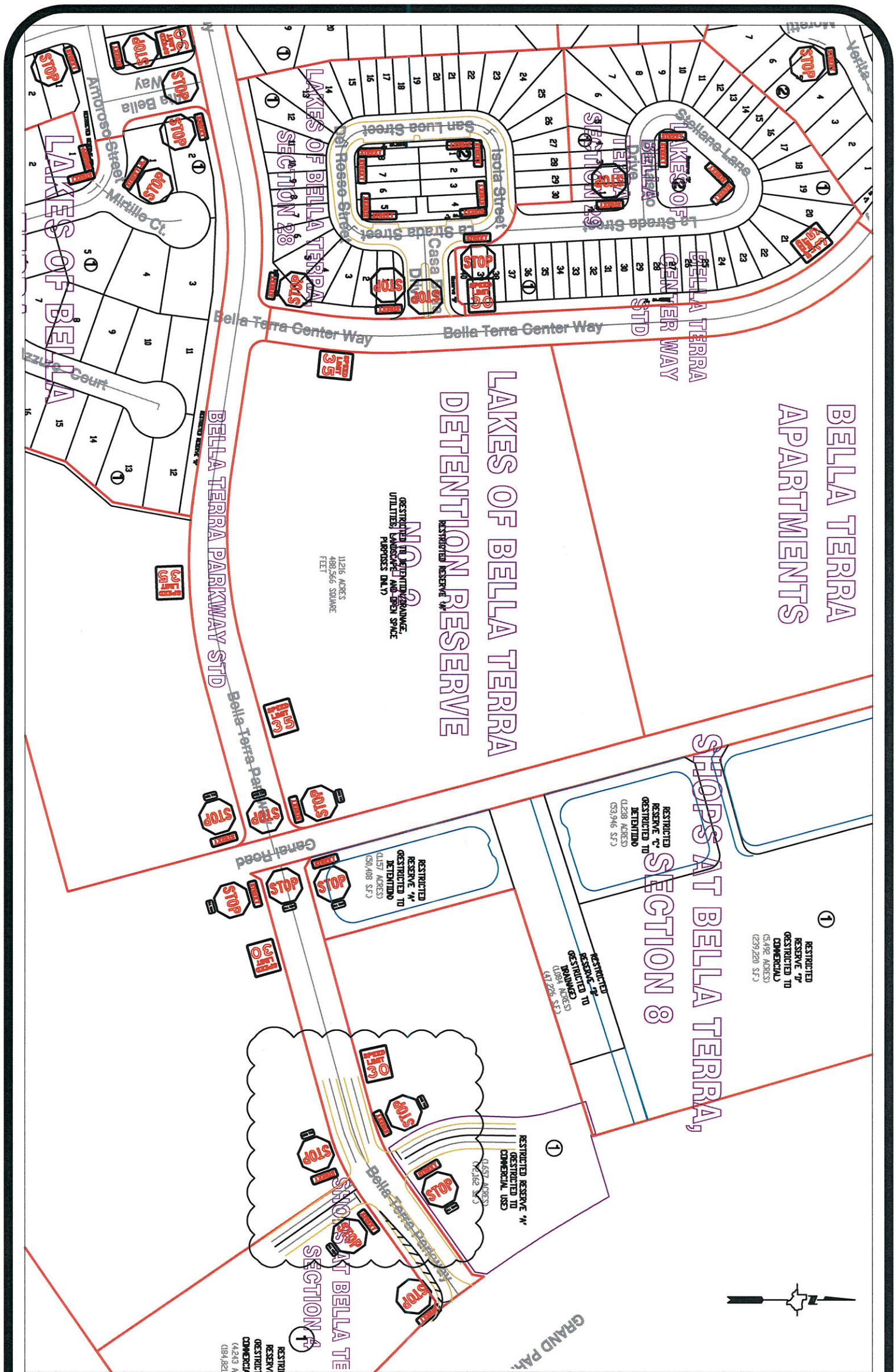
Is a driver on the minor street, after stopping, unable to see conflicting traffic and is unable to reasonably negotiate the intersection unless conflicting cross traffic is also required to stop? No

Is there a need to control pedestrian/vehicle conflicts and is the intersection near a location generating high pedestrian volumes? No

Is the intersection composed of two residential neighborhood collector streets of similar design and operating characteristics where all-way stop control would improve operations? No

### Comments:

Satisfies 8-hour average volume warrant



**BELLA TERRA APARTMENTS**

**LAKES OF BELLA TERRA DETENTION RESERVE**

**SHOPS AT BELLA TERRA, SECTION 8**

**SHOPS AT BELLA TERRA, SECTION 4**

RESTRICTED TO DETENTION/DRAINAGE UTILITIES HANDOVER AND OPEN SPACE PURPOSES ONLY

1126 ACRES  
489,566 SQUARE FEET

RESTRICTED RESERVE "C"  
RESTRICTED TO DETENTION  
(4238 ACRES)  
(53,946 S.F.)

RESTRICTED RESERVE "D"  
RESTRICTED TO COMMERCIAL  
(3,492 ACRES)  
(239,220 S.F.)

RESTRICTED RESERVE "E"  
RESTRICTED TO TRAINING  
(1,084 ACRES)  
(41,228 S.F.)

RESTRICTED RESERVE "H"  
RESTRICTED TO COMMERCIAL USE  
(457 ACRES)  
(16,782 S.F.)

RESTRICTED RESERVE "I"  
RESTRICTED TO COMMERCIAL  
(4,243 ACRES)  
(184,821 S.F.)

**Note:**  
The purpose of this traffic control plan is to revise traffic control for a portion of Bella Terra Parkway with the addition of a multi-way stop as indicated on the drawing.

Drawn By: L. Brdecka  
Date: 7-25-18  
Approved By: Chris Debaillon, PE PTOE  
Date: 7/25/18  
Scale: 1" = 200'-0"

Bella Terra Parkway  
(Portion)  
(Revised) Control Map and  
Traffic Sign Layout  
Fort Bend County Engineering Dept.  
301 Jackson Street  
Richmond, Texas 77469