



Fort Bend County Engineering  
FORT BEND COUNTY, TEXAS

Richard W. Stolleis, P.E.  
County Engineer

June 18, 2018

Judge Robert E. Hebert  
Fort Bend County Judge  
301 Jackson Street  
Richmond, Texas 77469

**RE: Major Thoroughfare Plan modifications of Blaisdale Road, DRS Road, Melody Lane, New Territory Boulevard, and Private Drive/2<sup>nd</sup> Street**

Dear Judge Hebert:

Fort Bend County Engineering respectfully requests modifications to the Fort Bend County Major Thoroughfare Plan (MTFP). The requested modifications are to align the Fort Bend County MTFP with the adopted City of Richmond MTFP.

**Blaisdale Road** – Remove classification between proposed Private Drive/2<sup>nd</sup> Street extension and FM 359; downgrade to a Collector between FM 359 and State Highway 99/Grand Parkway; downgrade to a Collector between the proposed 10<sup>th</sup> Street and Private Drive/2<sup>nd</sup> Street extensions.

**DRS Road and Melody Lane** – Add DRS Road as a Major Thoroughfare and upgrade Melody Lane between the proposed 10<sup>th</sup> Street extension and Harlem Road to a Major Thoroughfare.

**Private Drive/2<sup>nd</sup> Street** – Extend the Collector classification from current terminus with Blaisdale Road extension to new DRS Road alignment.

**New Territory Boulevard** – Remove Collector section of New Territory Boulevard between the future extension of Baudet Lane and the future intersection of Harlem Road and New Territory Boulevard.

A copy of the map is attached for your review. The public hearing date for acceptance of the change is being scheduled. If you should have any questions, please give me a call 281-633-7515.

Sincerely,

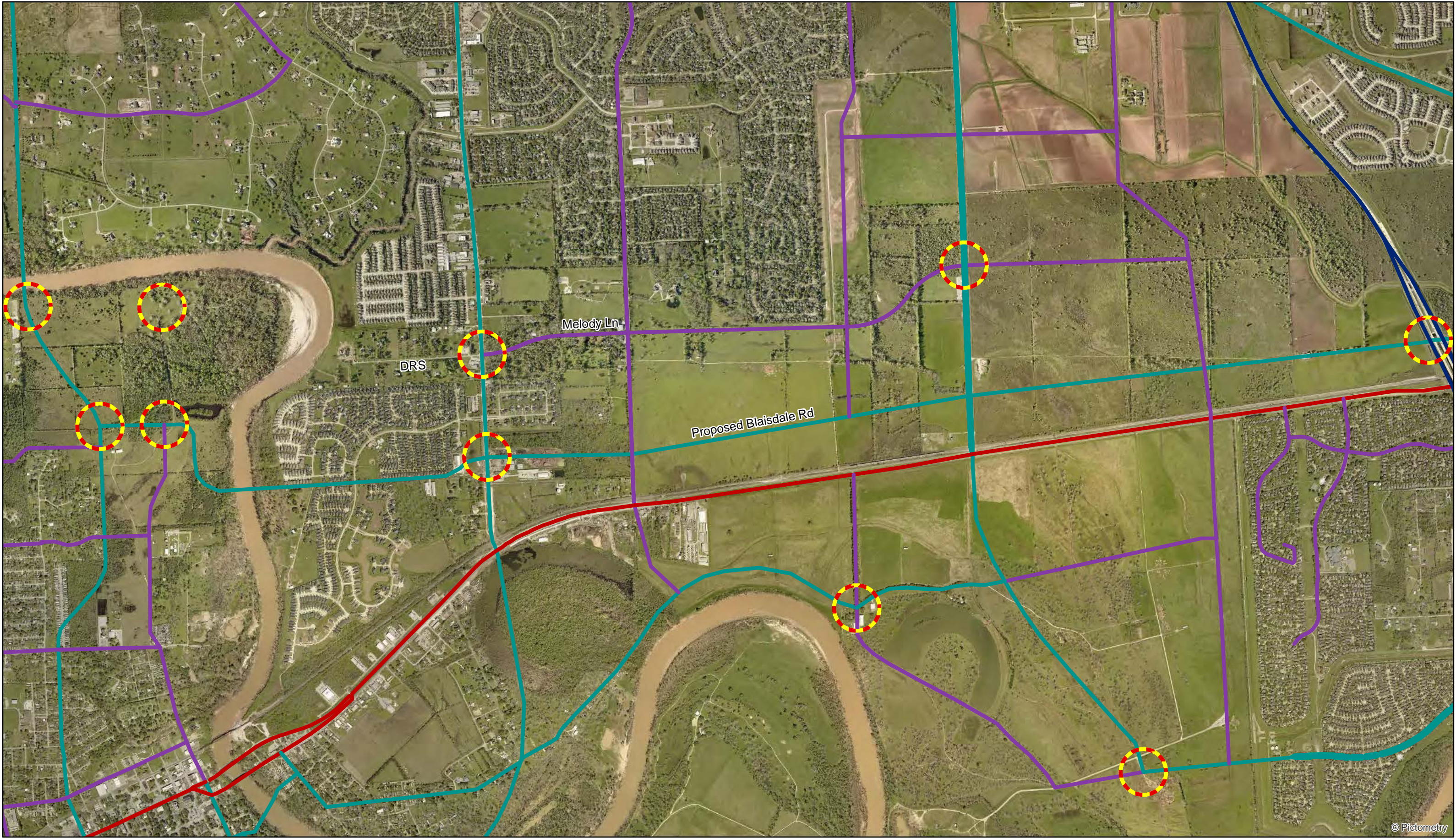
Maggie Dalton  
Development Services Manager

MD/mjs

cc: Commissioner Vincent M. Morales, Jr., Pct. 1  
Commissioner Grady Prestage, Pct. 2  
Commissioner W. A. Andy Meyers, Pct. 3  
Commissioner James Patterson, Pct. 4  
Mr. Richard Stolleis, P.E., County Engineer  
File

301 Jackson St., Suite 401 | Richmond, TX 77469  
Phone 281-633-7500

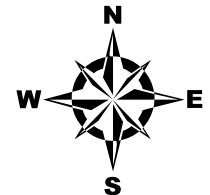
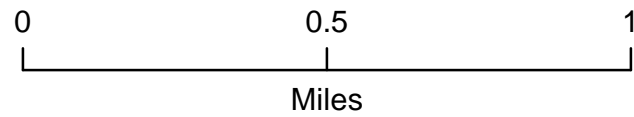




**TEI Road Classification**

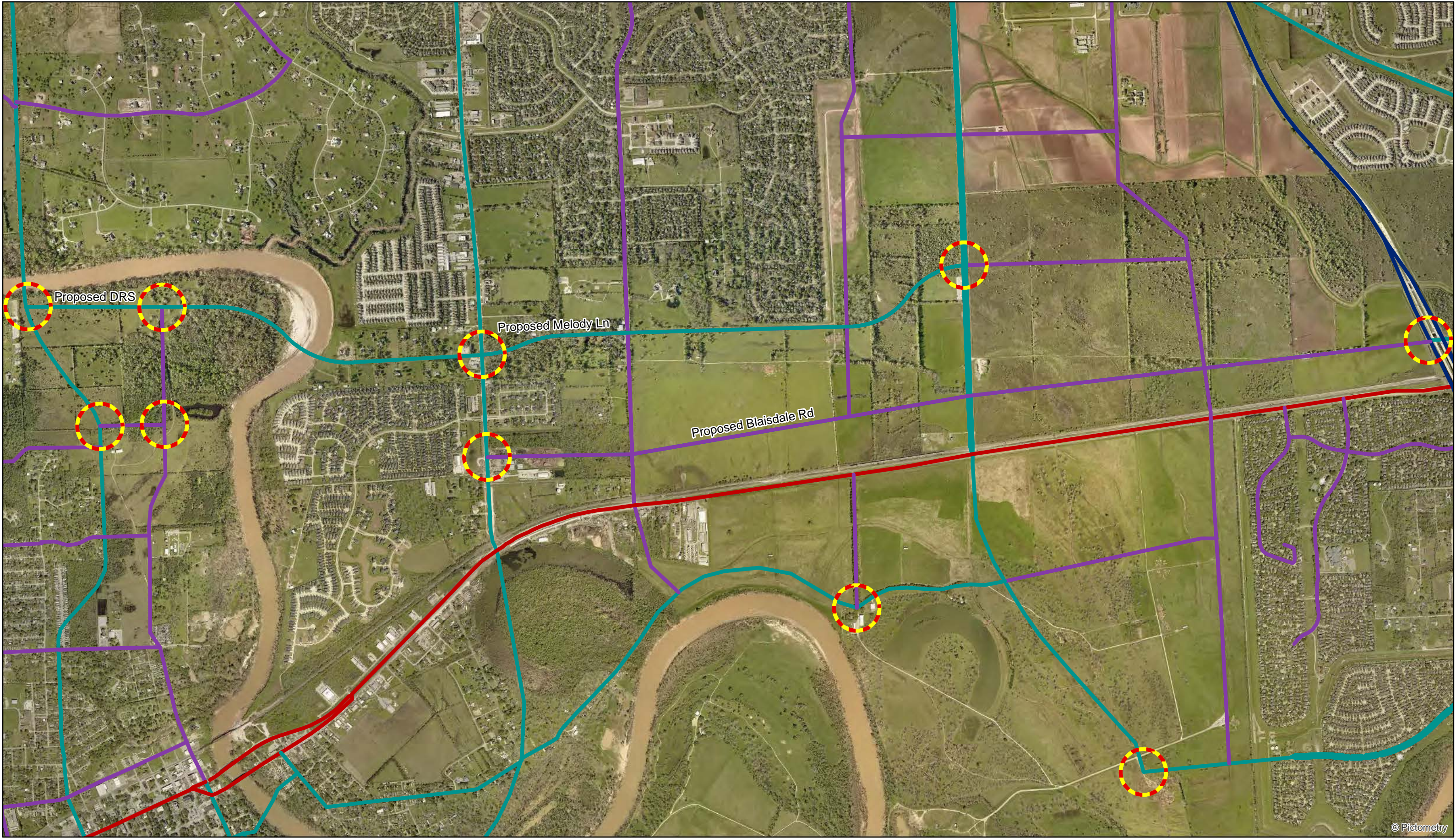
- Collector
- Major Thoroughfare
- Principal Thoroughfare
- Toll

# Fort Bend County MTFP Current



LEGAL DISCLAIMER  
This Geographical Information Systems (GIS) Data is a public resource of general information. The information contained was generated from GIS data maintained by Fort Bend County and different sources and agencies. The County of Fort Bend makes no warranty, representation, or guarantee as to the content, sequence, accuracy, timeliness, or completeness of any of the spatial data or database information provided herein. The County of Fort Bend shall assume no liability for any errors, omissions, or inaccuracies in the information provided, regardless of how caused; or any decision made or action taken or not taken by any person relying on any information or data furnished within. If any errors are detected, please contact the GIS Division of Fort Bend County Engineering so they may be corrected.

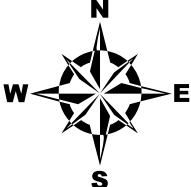
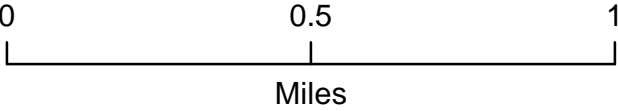




**TEI Road Classification**

- Collector
- Major Thoroughfare
- Principal Thoroughfare
- Toll

**Fort Bend County MTFP  
Proposed**



**LEGAL DISCLAIMER**  
This Geographical Information Systems (GIS) Data is a public resource of general information. The information contained was generated from GIS data maintained by Fort Bend County and different sources and agencies. The County of Fort Bend makes no warranty, representation, or guarantee as to the content sequence, accuracy, timeliness, or completeness of any of the spatial data or database information provided herein. The County of Fort Bend shall assume no liability for any errors, omissions, or inaccuracies in the information provided, regardless of how caused; or any decision made or action taken or not taken by any person relying on any information or data furnished within. If any errors are detected, please contact the GIS Division of Fort Bend County Engineering so they may be corrected.