



**PERMIT APPLICATION REVIEW FORM FOR
CABLE, CONDUIT, AND POLE LINE ACTIVITY
IN FORT BEND COUNTY**

**Fort Bend County
Engineering Department**
301 Jackson Suite 401
Richmond, Texas 77469
281.633.7500
Permits@fortbendcountytx.gov

- ☒ **Right of Way Permit**
☐ **Commercial Driveway Permit**

Permit No: 2018-20492

The following "Notice of Proposed Cable, Conduit, and/or Pole Line activity in Fort Bend County" and accompanying attachments have been reviewed and the notice conforms to appropriate regulations set by Commissioner's Court of Fort Bend County, Texas.

(1) COMPLETE APPLICATION FORM:

- ☒ a. Name of road, street, and/or drainage ditch affected.
☒ b. Vicinity map showing course of directions
☒ c. Plans and specifications

(2) BOND:

- ☐ County Attorney, approval when applicable.
- ☒ Perpetual bond currently posted. Bond No: [REDACTED] Amount: \$50,000.00
- ☐ Performance bond submitted. Bond No: _____ Amount: _____
- ☐ Cashier's Check Check No: _____ Amount: _____

(3) DRAINAGE DISTRICT APPROVAL (WHEN APPLICABLE):

Drainage District Approval

Date

We have reviewed this project and agree it meets minimum requirements.



Permit Administrator

5/14/2018

Date

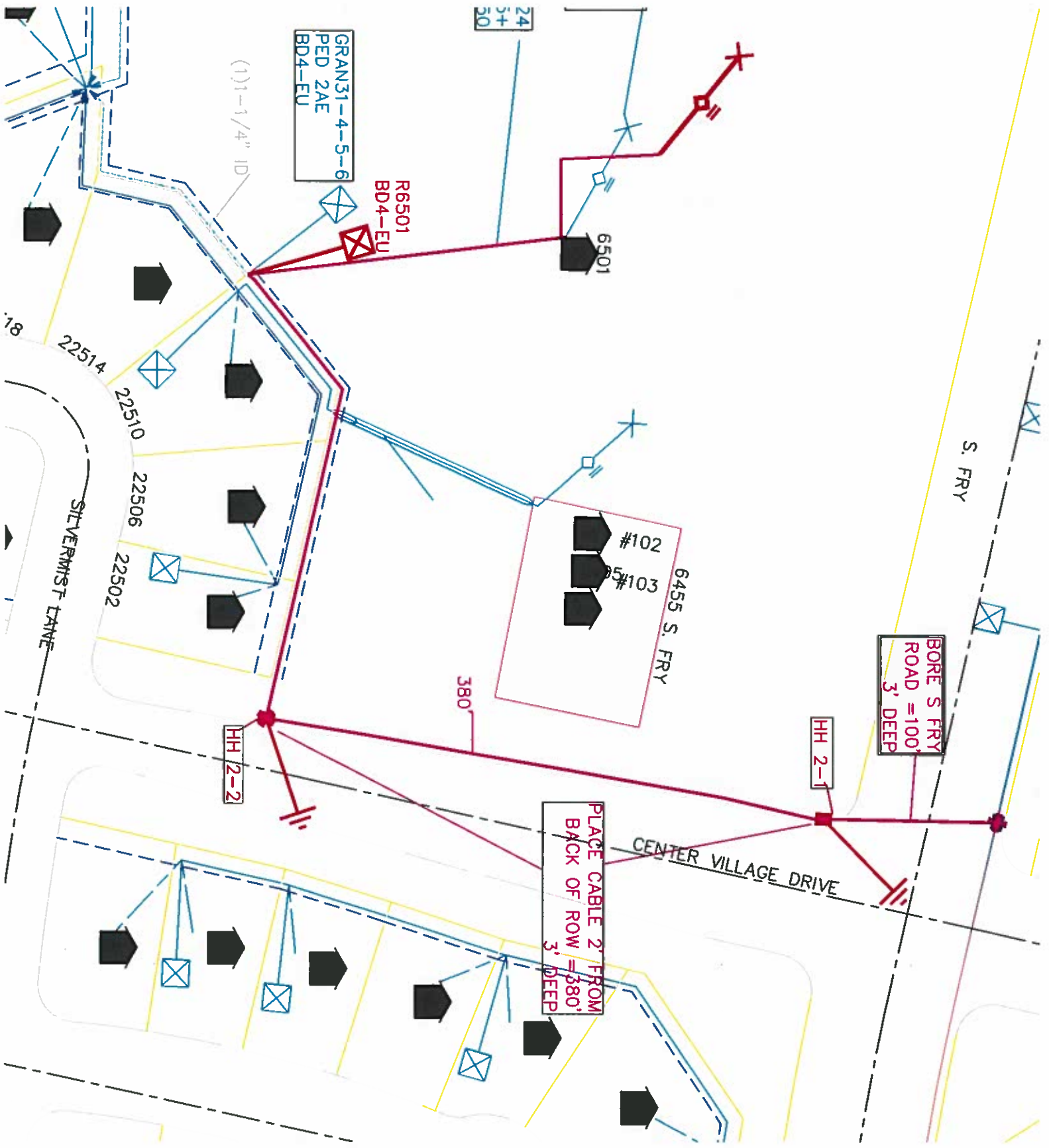


S FRY RD
LOOKING EAST
BORE



CONSOLIDATED COMMUNICATIONS PROPOSED
PHONE CABLE

<u>Title:</u> Bore S FRY Rd PROJECT #150KAT18096		<u>Drawn By:</u> David Minks	<u>County:</u> FT BEND	Consolidated Communications 24403 Roesner Katy Tx 77494
<u>Scale:</u> NTS				
<u>Date:</u> 5-1-2018	<u>Exchange:</u> WADD			



GRAN31-4-5-6
PED 2AE
BD4-EU

R6501
BD4-EU

6501

24
3+
30

22514

22510

22506

22502

HH 2-2

HH 2-1

BORE S FRY
ROAD = 100'
3' DEEP

#102
#103
6455 S. FRY

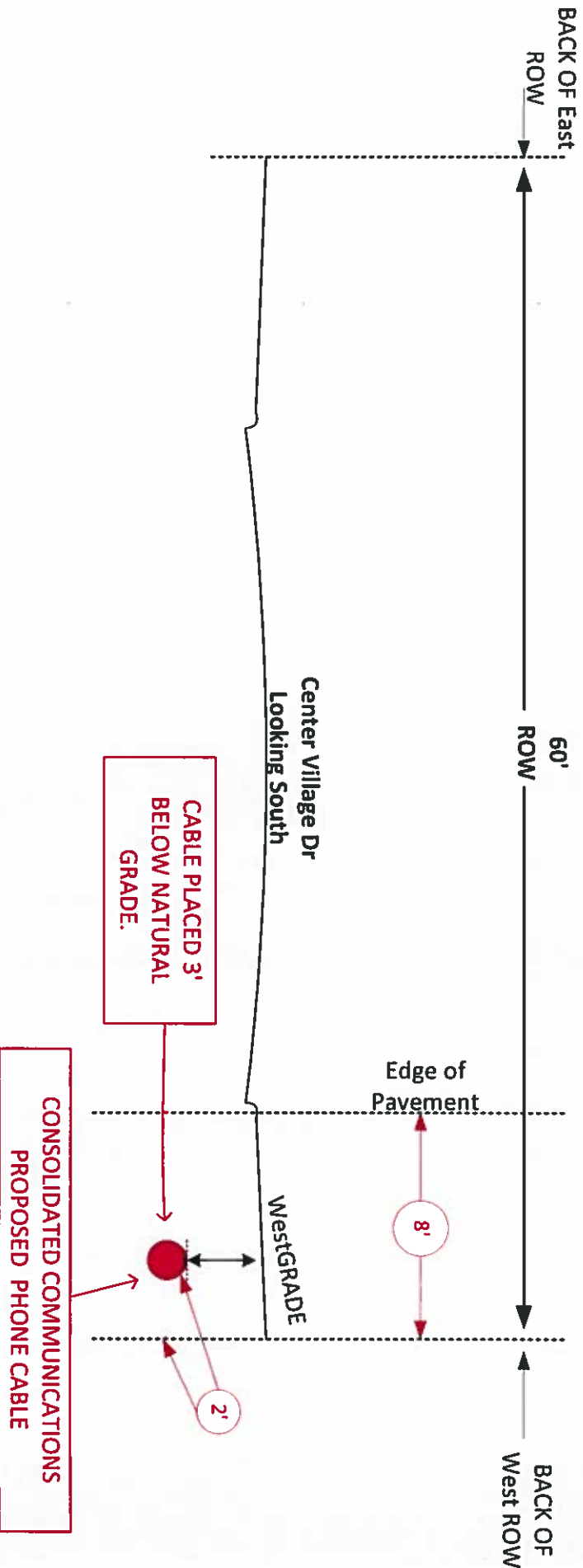
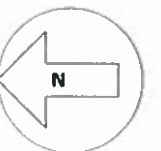
380

PLACE CABLE 2' FROM
BACK OF ROW = 380'
3' DEEP

CENTER VILLAGE DRIVE

S. FRY

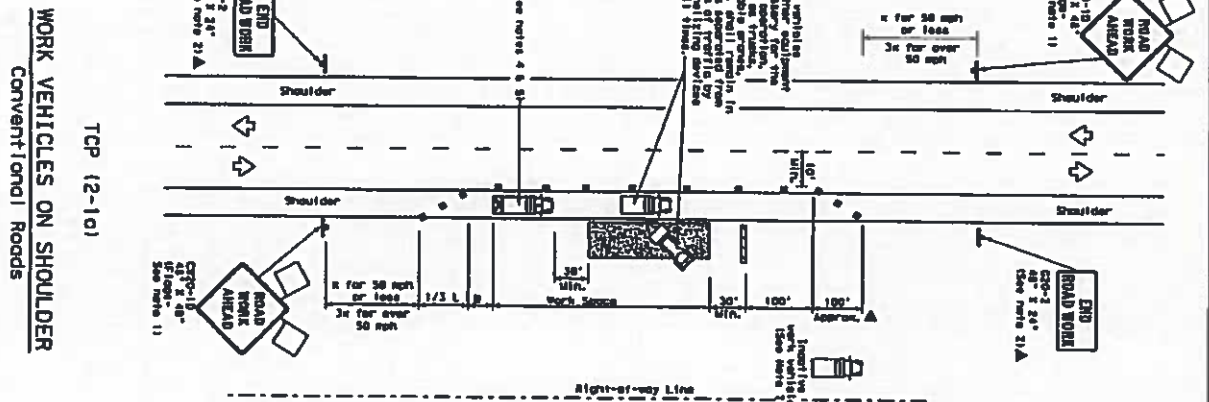
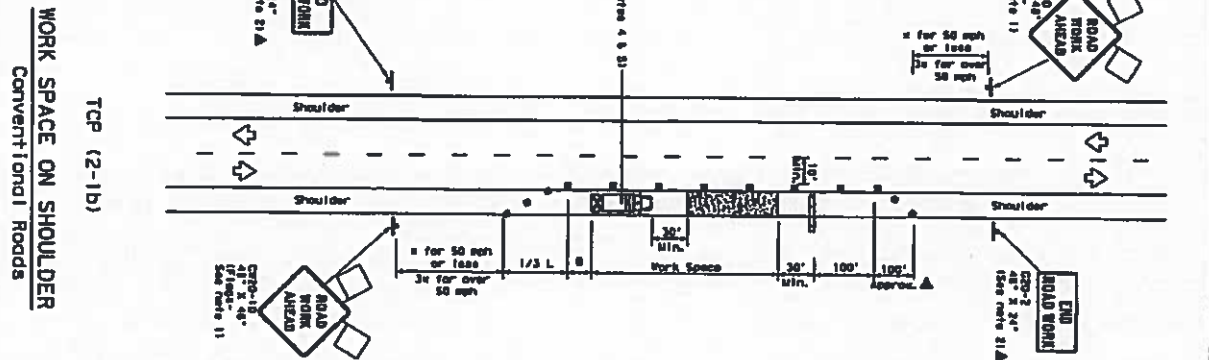
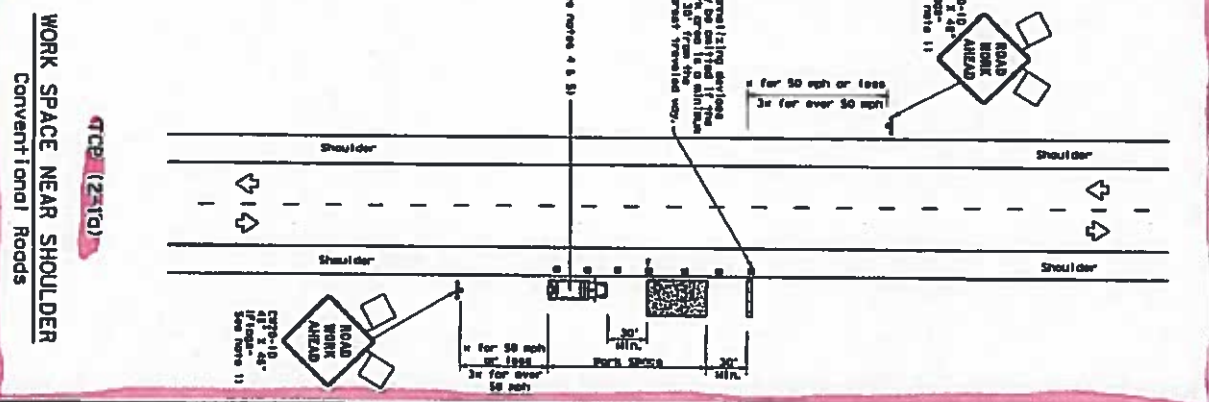
SILVERMIST LANE



<u>Title:</u> #150KAT18096 Side View Center Village Dr		<u>Drawn By:</u> David Minks		<u>County:</u> HARRIS		Consolidated Communications 24403 Roesner Katy Tx 77494
		<u>Scale:</u> NTS				
<u>Date:</u> 5-1-18				<u>Exchange:</u> KATY		

DISCLAIMER: The use of this standard is governed by the "Texas Engineering Practice Act". No warranty of any kind is made by the Texas Department of Transportation for the use of this standard in other forms or for other purposes. The Texas Department of Transportation is not responsible for any damages resulting from its use.

DATE: 12/1/81



LEGEND

Symbol	Description
[Symbol]	Type 3 Barricade
[Symbol]	Heavy Work Vehicle
[Symbol]	Trailing Warning Flashing Arrow Board
[Symbol]	Sign
[Symbol]	Flagger

Table with 4 columns: Sign, Dimensions, Recommended Location, Recommended Spacing

Sign	Dimensions	Recommended Location	Recommended Spacing
1	12' x 12'	100' from work area	100'
2	12' x 12'	100' from work area	100'
3	12' x 12'	100' from work area	100'
4	12' x 12'	100' from work area	100'
5	12' x 12'	100' from work area	100'
6	12' x 12'	100' from work area	100'
7	12' x 12'	100' from work area	100'
8	12' x 12'	100' from work area	100'
9	12' x 12'	100' from work area	100'
10	12' x 12'	100' from work area	100'
11	12' x 12'	100' from work area	100'
12	12' x 12'	100' from work area	100'
13	12' x 12'	100' from work area	100'
14	12' x 12'	100' from work area	100'
15	12' x 12'	100' from work area	100'
16	12' x 12'	100' from work area	100'
17	12' x 12'	100' from work area	100'
18	12' x 12'	100' from work area	100'
19	12' x 12'	100' from work area	100'
20	12' x 12'	100' from work area	100'
21	12' x 12'	100' from work area	100'
22	12' x 12'	100' from work area	100'
23	12' x 12'	100' from work area	100'
24	12' x 12'	100' from work area	100'
25	12' x 12'	100' from work area	100'
26	12' x 12'	100' from work area	100'
27	12' x 12'	100' from work area	100'
28	12' x 12'	100' from work area	100'
29	12' x 12'	100' from work area	100'
30	12' x 12'	100' from work area	100'
31	12' x 12'	100' from work area	100'
32	12' x 12'	100' from work area	100'
33	12' x 12'	100' from work area	100'
34	12' x 12'	100' from work area	100'
35	12' x 12'	100' from work area	100'
36	12' x 12'	100' from work area	100'
37	12' x 12'	100' from work area	100'
38	12' x 12'	100' from work area	100'
39	12' x 12'	100' from work area	100'
40	12' x 12'	100' from work area	100'
41	12' x 12'	100' from work area	100'
42	12' x 12'	100' from work area	100'
43	12' x 12'	100' from work area	100'
44	12' x 12'	100' from work area	100'
45	12' x 12'	100' from work area	100'
46	12' x 12'	100' from work area	100'
47	12' x 12'	100' from work area	100'
48	12' x 12'	100' from work area	100'
49	12' x 12'	100' from work area	100'
50	12' x 12'	100' from work area	100'
51	12' x 12'	100' from work area	100'
52	12' x 12'	100' from work area	100'
53	12' x 12'	100' from work area	100'
54	12' x 12'	100' from work area	100'
55	12' x 12'	100' from work area	100'
56	12' x 12'	100' from work area	100'
57	12' x 12'	100' from work area	100'
58	12' x 12'	100' from work area	100'
59	12' x 12'	100' from work area	100'
60	12' x 12'	100' from work area	100'
61	12' x 12'	100' from work area	100'
62	12' x 12'	100' from work area	100'
63	12' x 12'	100' from work area	100'
64	12' x 12'	100' from work area	100'
65	12' x 12'	100' from work area	100'
66	12' x 12'	100' from work area	100'
67	12' x 12'	100' from work area	100'
68	12' x 12'	100' from work area	100'
69	12' x 12'	100' from work area	100'
70	12' x 12'	100' from work area	100'
71	12' x 12'	100' from work area	100'
72	12' x 12'	100' from work area	100'
73	12' x 12'	100' from work area	100'
74	12' x 12'	100' from work area	100'
75	12' x 12'	100' from work area	100'
76	12' x 12'	100' from work area	100'
77	12' x 12'	100' from work area	100'
78	12' x 12'	100' from work area	100'
79	12' x 12'	100' from work area	100'
80	12' x 12'	100' from work area	100'
81	12' x 12'	100' from work area	100'
82	12' x 12'	100' from work area	100'
83	12' x 12'	100' from work area	100'
84	12' x 12'	100' from work area	100'
85	12' x 12'	100' from work area	100'
86	12' x 12'	100' from work area	100'
87	12' x 12'	100' from work area	100'
88	12' x 12'	100' from work area	100'
89	12' x 12'	100' from work area	100'
90	12' x 12'	100' from work area	100'
91	12' x 12'	100' from work area	100'
92	12' x 12'	100' from work area	100'
93	12' x 12'	100' from work area	100'
94	12' x 12'	100' from work area	100'
95	12' x 12'	100' from work area	100'
96	12' x 12'	100' from work area	100'
97	12' x 12'	100' from work area	100'
98	12' x 12'	100' from work area	100'
99	12' x 12'	100' from work area	100'
100	12' x 12'	100' from work area	100'

Table with 2 columns: Sign, Dimensions

Sign	Dimensions
1	12' x 12'
2	12' x 12'
3	12' x 12'
4	12' x 12'
5	12' x 12'
6	12' x 12'
7	12' x 12'
8	12' x 12'
9	12' x 12'
10	12' x 12'
11	12' x 12'
12	12' x 12'
13	12' x 12'
14	12' x 12'
15	12' x 12'
16	12' x 12'
17	12' x 12'
18	12' x 12'
19	12' x 12'
20	12' x 12'
21	12' x 12'
22	12' x 12'
23	12' x 12'
24	12' x 12'
25	12' x 12'
26	12' x 12'
27	12' x 12'
28	12' x 12'
29	12' x 12'
30	12' x 12'
31	12' x 12'
32	12' x 12'
33	12' x 12'
34	12' x 12'
35	12' x 12'
36	12' x 12'
37	12' x 12'
38	12' x 12'
39	12' x 12'
40	12' x 12'
41	12' x 12'
42	12' x 12'
43	12' x 12'
44	12' x 12'
45	12' x 12'
46	12' x 12'
47	12' x 12'
48	12' x 12'
49	12' x 12'
50	12' x 12'
51	12' x 12'
52	12' x 12'
53	12' x 12'
54	12' x 12'
55	12' x 12'
56	12' x 12'
57	12' x 12'
58	12' x 12'
59	12' x 12'
60	12' x 12'
61	12' x 12'
62	12' x 12'
63	12' x 12'
64	12' x 12'
65	12' x 12'
66	12' x 12'
67	12' x 12'
68	12' x 12'
69	12' x 12'
70	12' x 12'
71	12' x 12'
72	12' x 12'
73	12' x 12'
74	12' x 12'
75	12' x 12'
76	12' x 12'
77	12' x 12'
78	12' x 12'
79	12' x 12'
80	12' x 12'
81	12' x 12'
82	12' x 12'
83	12' x 12'
84	12' x 12'
85	12' x 12'
86	12' x 12'
87	12' x 12'
88	12' x 12'
89	12' x 12'
90	12' x 12'
91	12' x 12'
92	12' x 12'
93	12' x 12'
94	12' x 12'
95	12' x 12'
96	12' x 12'
97	12' x 12'
98	12' x 12'
99	12' x 12'
100	12' x 12'

GENERAL NOTES

1. Flare returned to shop where shown, or as required.
2. All traffic control devices (handwritten or machine) must be placed in the work area in accordance with the Texas Department of Transportation Manual for Traffic Control Devices.
3. Staggered placement of signs should be used in accordance with the Texas Department of Transportation Manual for Traffic Control Devices.
4. Staggered placement of signs should be used in accordance with the Texas Department of Transportation Manual for Traffic Control Devices.
5. Additional signs may be required for the work area.
6. Additional signs may be required for the work area.
7. Additional signs may be required for the work area.
8. Additional signs may be required for the work area.
9. Additional signs may be required for the work area.
10. Additional signs may be required for the work area.

For construction or maintenance work, additional signs may be required for the work area.

TRAFFIC CONTROL PLAN
CONVENTIONAL ROAD
SHOULDER WORK

TCP (2-1) - 12

Station	Sign	Quantity	Notes
1+00	1	1	
1+10	2	2	
1+20	3	3	
1+30	4	4	
1+40	5	5	
1+50	6	6	
1+60	7	7	
1+70	8	8	
1+80	9	9	
1+90	10	10	
2+00	11	11	
2+10	12	12	
2+20	13	13	
2+30	14	14	
2+40	15	15	
2+50	16	16	
2+60	17	17	
2+70	18	18	
2+80	19	19	
2+90	20	20	
3+00	21	21	
3+10	22	22	
3+20	23	23	
3+30	24	24	
3+40	25	25	
3+50	26	26	
3+60	27	27	
3+70	28	28	
3+80	29	29	
3+90	30	30	
4+00	31	31	
4+10	32	32	
4+20	33	33	
4+30	34	34	
4+40	35	35	
4+50	36	36	
4+60	37	37	
4+70	38	38	
4+80	39	39	
4+90	40	40	
5+00	41	41	
5+10	42	42	
5+20	43	43	
5+30	44	44	
5+40	45	45	
5+50	46	46	
5+60	47	47	
5+70	48	48	
5+80	49	49	
5+90	50	50	