



Fort Bend County Engineering
FORT BEND COUNTY, TEXAS

Richard W. Stolleis, P.E.
County Engineer

April 13, 2018

Commissioner Grady Prestage
Fort Bend County Precinct 2
303 Texas Parkway, Suite 213
Missouri City, Texas 77489

RE: Bellaire Boulevard at San Pablo Drive – All-Way Stop Control

Dear Commissioner:

The Fort Bend County Engineering Department has completed a review of the operational conditions at the intersection of Bellaire Boulevard at San Pablo Drive in response to a request for multi-way stop control. The posted speed limit is 35 mph on Bellaire Boulevard and 30 mph on San Pablo Drive. The intersection currently operates with stop control on San Pablo Drive. Bellaire Boulevard is identified as a Major Thoroughfare in the 2015 Fort Bend County Major Thoroughfare Plan.

A review of the sight distance at the intersection shows that the newly constructed bridge rail on eastbound Bellaire Boulevard, west of San Pablo Drive, is located within the intersection sight triangle and thus obstructs the view of eastbound Bellaire Boulevard traffic from northbound San Pablo Drive. Therefore, Engineering recommends the conversion of the intersection to all-way stop control.

The updated traffic control plan is attached and will be placed on the next available Commissioners Court agenda. If you have any questions please do not hesitate to contact me at 281-633-7528 or chris.debaillon@fortbendcountytexas.gov.

Regards,

A handwritten signature in blue ink, appearing to read "Chris Debaillon".

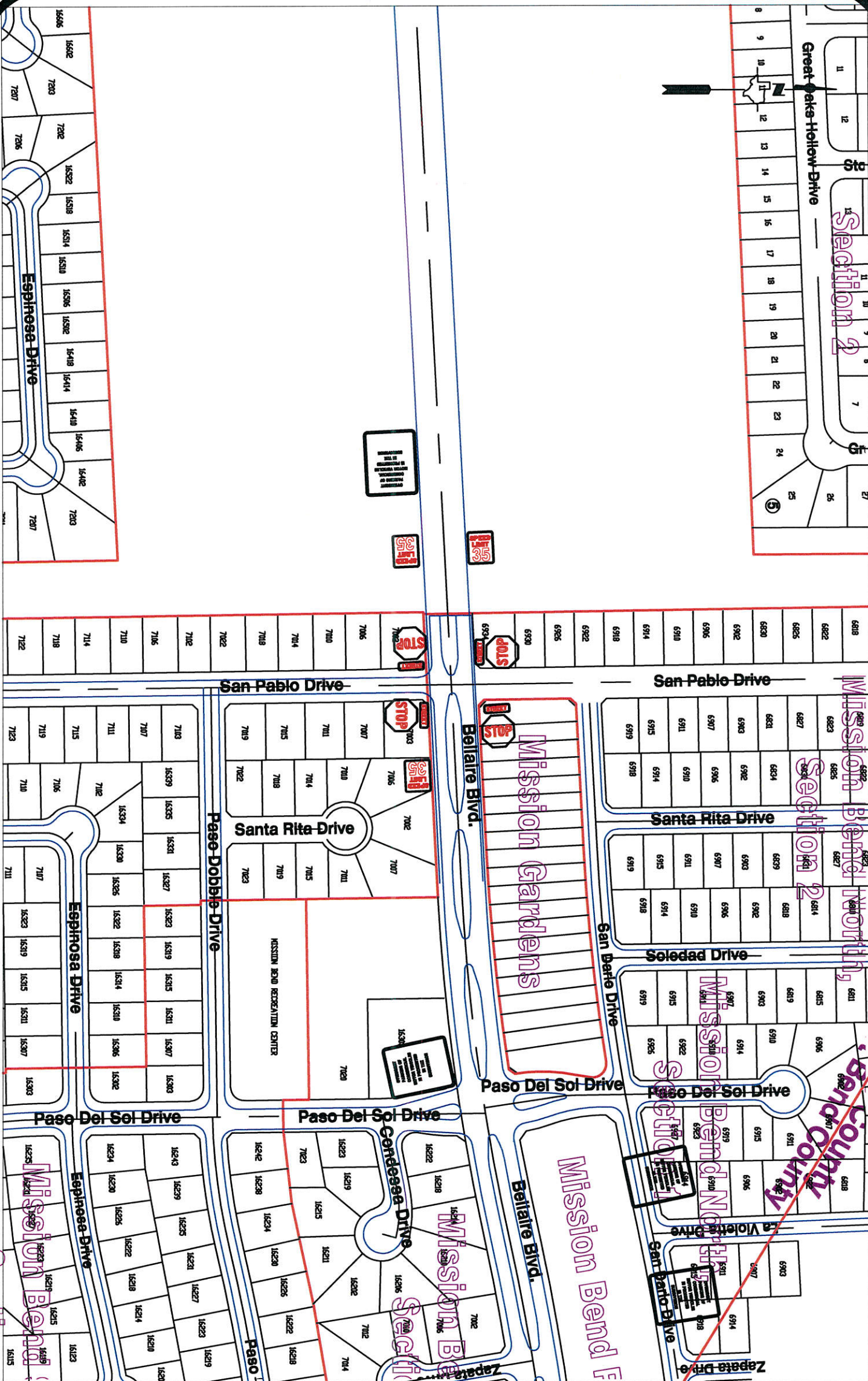
Chris Debaillon, PE, PTOE
Assistant County Engineer – Traffic

CD/mjs

cc: Judge Robert E. Hebert, County Judge
Marc Grant - FBC Road & Bridge
Brian Fields - Signage Department
File

Attachments

301 Jackson St., 4th Floor | Richmond, TX 77469
Phone 281-633-7500 * Fax 281-633-7545



Note:

The purpose of this traffic control plan is to revise traffic control for the intersection of Bellaire Boulevard and San Pablo Drive with the addition of a multi-way stop as indicated on the drawing.

Drawn By: L. Brdecka

Date: 4-13-18

Approved By: C. Debailon, PE PTOE

Date: 3-17-05

Scale

1" = 200'-0"

Bellaire Boulevard in Mission Bend Area Control Map and Traffic Sign Layout

Fort Bend County Engineering Dept.
301 Jackson Street
Richmond, Texas 77469