

PLAT RECORDING SHEET

PLAT NAME: Lakes of Bella Terra West, Sec. 2

PLAT NO: _____

ACREAGE: 14.559

LEAGUE: The Walton, Hill and Walton "A" Survey

ABSTRACT NUMBER: 435

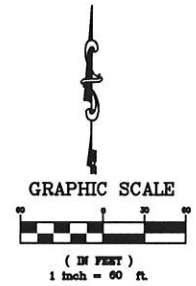
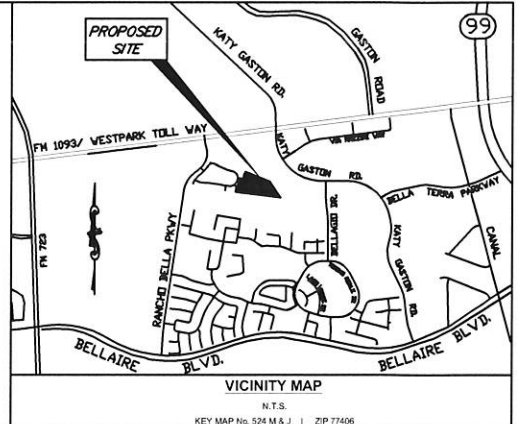
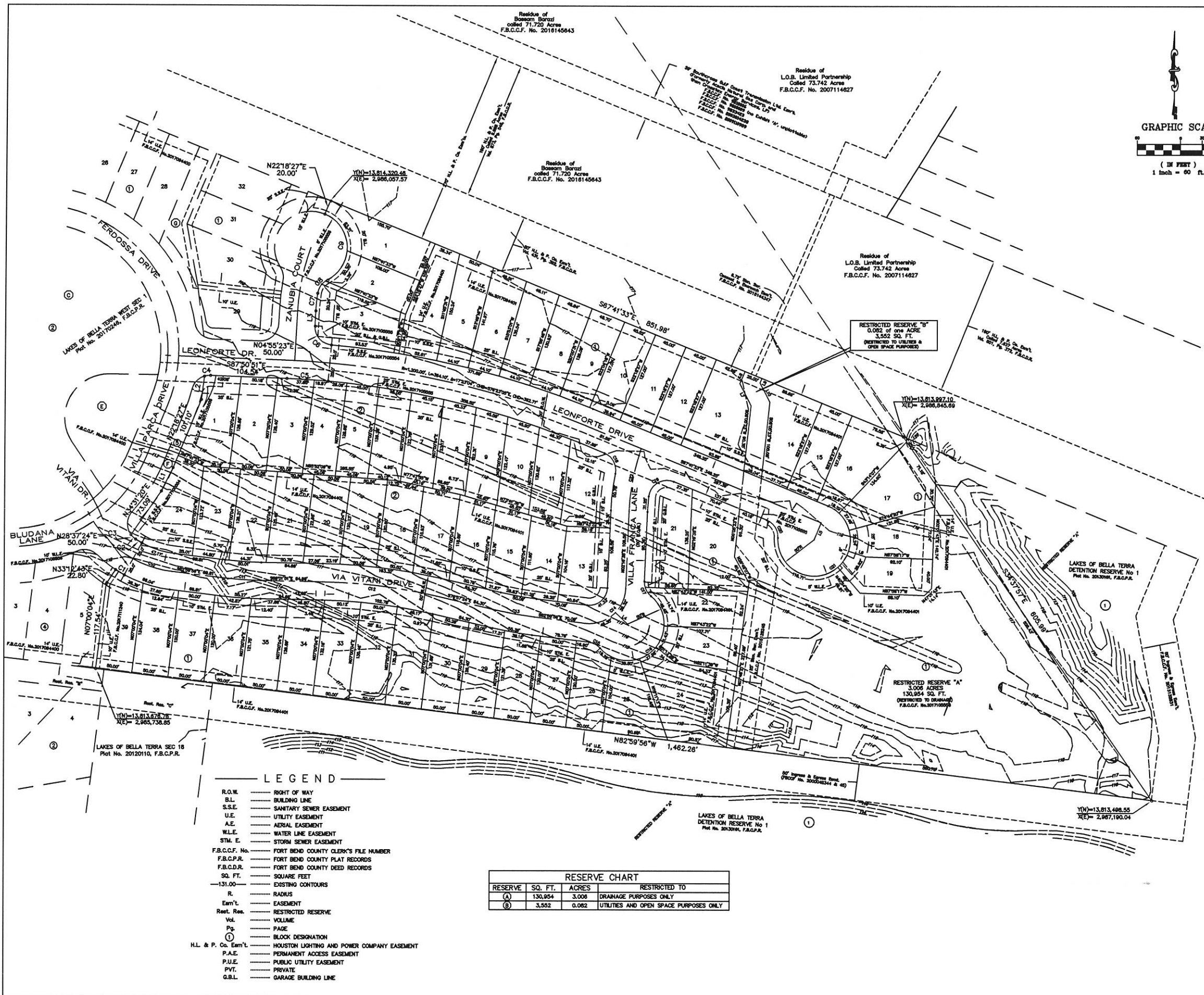
NUMBER OF BLOCKS: 2

NUMBER OF LOTS: 63

NUMBER OF RESERVES: 2

OWNERS: LOB West, Inc., a Texas Corporation

(DEPUTY CLERK)



CURVE	RADIUS	LENGTH	CHORD	BEARING	DELTA
C1	175.00'	14.01'	14.01'	S89°04'54"E	04°35'19"
C2	125.00'	10.01'	10.01'	S89°04'54"W	04°35'19"
C3	25.00'	8.87'	8.87'	N48°27'31"W	20°19'32"
C4	25.00'	8.36'	8.34'	N82°33'18"E	19°11'51"
C5	1,173.90'	58.81'	58.81'	S88°27'44"E	02°48'14"
C6	25.00'	38.37'	34.71'	N11°02'17"W	07°51'13"
C7	275.00'	26.85'	26.83'	N05°40'01"E	05°36'50"
C8	25.00'	23.56'	22.73'	N35°30'37"E	54°04'22"
C9	50.00'	113.68'	80.72'	N02°44'22"W	130°14'21"
C10	150.00'	36.81'	36.27'	S72°11'18"E	21°37'20"
C11	500.00'	52.84'	52.82'	S82°02'53"E	09°01'56"
C12	750.00'	158.00'	157.78'	S82°58'37"E	12°04'27"
C13	500.00'	52.73'	52.70'	S79°58'40"E	08°02'32"
C14	50.00'	82.66'	73.56'	N49°38'21"E	84°43'28"
C15	25.00'	18.11'	17.72'	S82°14'30"E	41°30'53"
C16	50.00'	164.92'	99.49'	N44°01'21"E	188°59'09"
C17	25.00'	23.02'	22.21'	N24°05'48"W	52°44'52"
C18	25.00'	34.44'	31.78'	S28°13'52"E	78°55'22"
C19	25.00'	48.08'	39.83'	N59°30'20"E	105°36'14"
C20	25.00'	32.77'	28.87'	S32°25'43"E	70°31'45"
C21	50.00'	218.63'	81.85'	N57°14'19"E	250°31'44"
C22	300.00'	87.82'	87.31'	N10°36'41"E	16°44'05"

LINE	BEARING	LENGTH
L1	N26°35'12"E	35.62'
L2	N07°00'04"E	32.35'
L3	N02°31'34"E	18.23'
L4	N46°06'28"W	23.03'
L5	N22°18'27"E	28.00'
L6	N71°44'55"W	26.00'
L7	S27°08'10"E	34.21'
L8	S23°21'19"W	18.01'
L9	S23°21'19"W	8.88'
L10	S27°08'10"E	29.88'

- LEGEND**
- R.O.W. RIGHT OF WAY
 - B.L. BUILDING LINE
 - S.S.E. SANITARY SEWER EASEMENT
 - U.E. UTILITY EASEMENT
 - A.E. AERIAL EASEMENT
 - W.L.E. WATER LINE EASEMENT
 - ST.M. E. STORM SEWER EASEMENT
 - F.B.C.C.F. No. FORT BEND COUNTY CLERK'S FILE NUMBER
 - F.B.C.P.R. FORT BEND COUNTY PLAT RECORDS
 - F.B.C.D.R. FORT BEND COUNTY DEED RECORDS
 - SQ. FT. SQUARE FEET
 - EXISTING CONTOURS
 - R. RADIUS
 - Eas't. EASEMENT
 - Rest. Res. RESTRICTED RESERVE
 - Vol. VOLUME
 - Pg. PAGE
 - Block BLOCK DESIGNATION
 - H.L. & P. Co. Eas't. HOUSTON LIGHTING AND POWER COMPANY EASEMENT
 - P.A.E. PERMANENT ACCESS EASEMENT
 - P.U.E. PUBLIC UTILITY EASEMENT
 - P.V.T. PRIVATE
 - G.B.L. GARAGE BUILDING LINE

RESERVE	SQ. FT.	ACRES	RESTRICTED TO
(A)	130,954	3.008	DRAINAGE PURPOSES ONLY
(B)	3,552	0.082	UTILITIES AND OPEN SPACE PURPOSES ONLY

LAKES OF BELLA TERRA WEST SEC 2

A SUBDIVISION OF 14.559 ACRES OF LAND BEING SITUATED IN THE WALTON, HILL AND WALTON "A" SURVEY, ABSTRACT No. 435 FORT BEND COUNTY, TEXAS

63 LOTS 2 BLOCKS 2 RESERVES
 SCALE: 1"=60' DATE: JUNE, 2017

OWNER:
 LOB WEST, Inc., a Texas Corporation
 7500 San Felipe, Ste. #400
 Houston, Texas 77065
 (713) 852-0200

PREPARED BY:
 BENCHMARK ENGINEERING CORPORATION
 Consulting Engineers - Planners - Surveyors
 2401 Fountainview Suite 500
 Houston, Texas 77057 U.S.A.
 (713)266-9930 Fax (713)266-3804

Texas Board of Professional Engineers
 Registration Number F-8788
 TBPLS Firm Registration Number 10009000

SHEET 1 OF 2
 B.E.C. JOB #0404-78-52