



**PERMIT APPLICATION REVIEW FORM FOR  
CABLE, CONDUIT, AND POLE LINE ACTIVITY  
IN FORT BEND COUNTY**

**Fort Bend County  
Engineering Department**  
301 Jackson Suite 401  
Richmond, Texas 77469  
281.633.7500  
[Permits@fortbendcountytx.gov](mailto:Permits@fortbendcountytx.gov)

☐

**Right of Way Permit**

☒

**Commercial Driveway Permit**

Permit No: 2017-11277

The following "Notice of Proposed Cable, Conduit, and/or Pole Line activity in Fort Bend County" and accompanying attachments have been reviewed and the notice conforms to appropriate regulations set by Commissioner's Court of Fort Bend County, Texas.

**(1) COMPLETE APPLICATION FORM:**

X
X
X

- a. Name of road, street, and/or drainage ditch affected.
- b. Vicinity map showing course of directions
- c. Plans and specifications

**(2) BOND:**

☐

County Attorney, approval when applicable.

☒

Perpetual bond currently posted.

Bond No:



Amount: \$50,000.00

☐

Performance bond submitted.

Bond No:

Amount:

☐

Cashier's Check

Check No:

Amount:

**(3) DRAINAGE DISTRICT APPROVAL (WHEN APPLICABLE):**

Drainage District Approval

Date

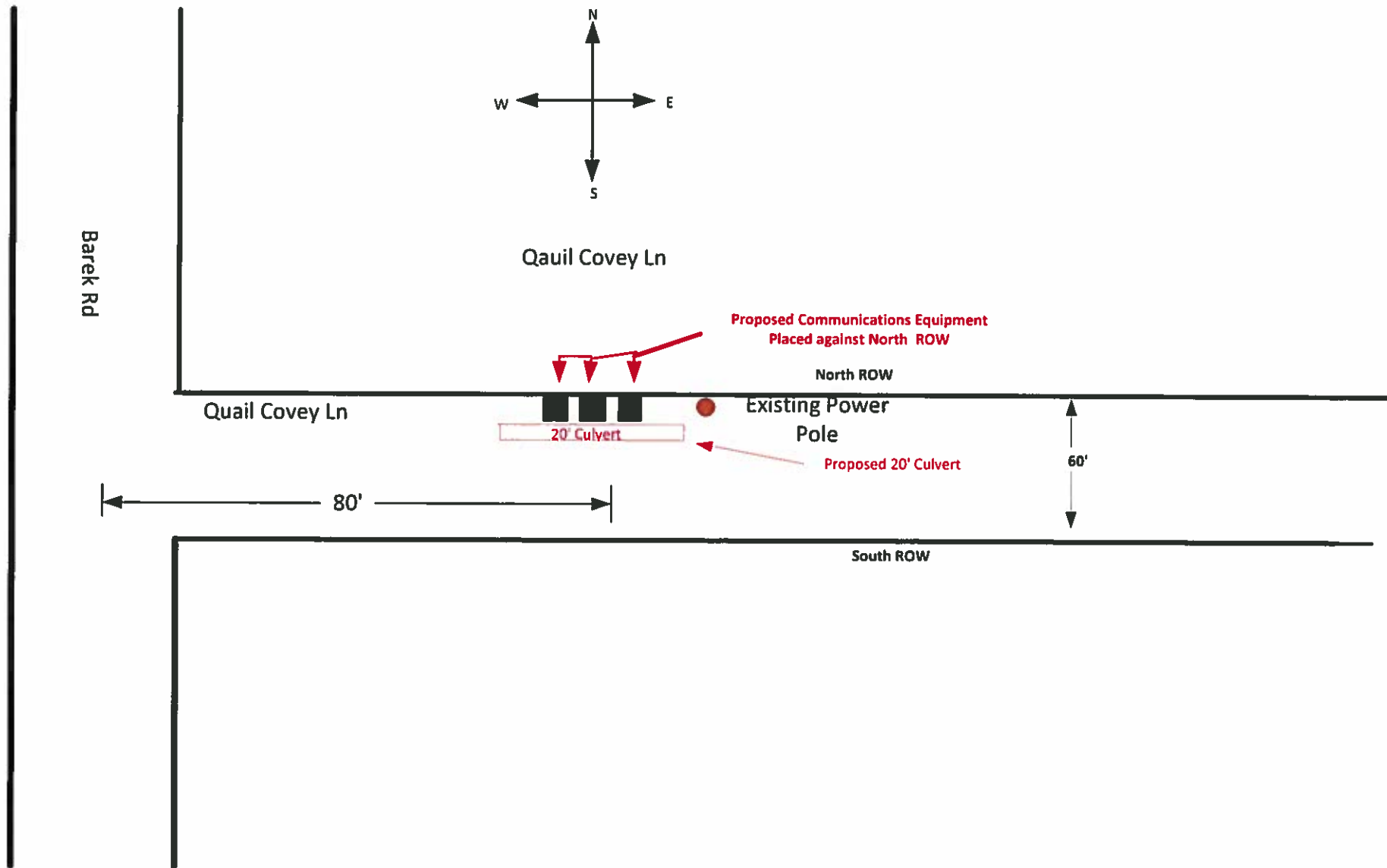
**We have reviewed this project and agree it meets minimum requirements.**

Permit Administrator

10/13/2017

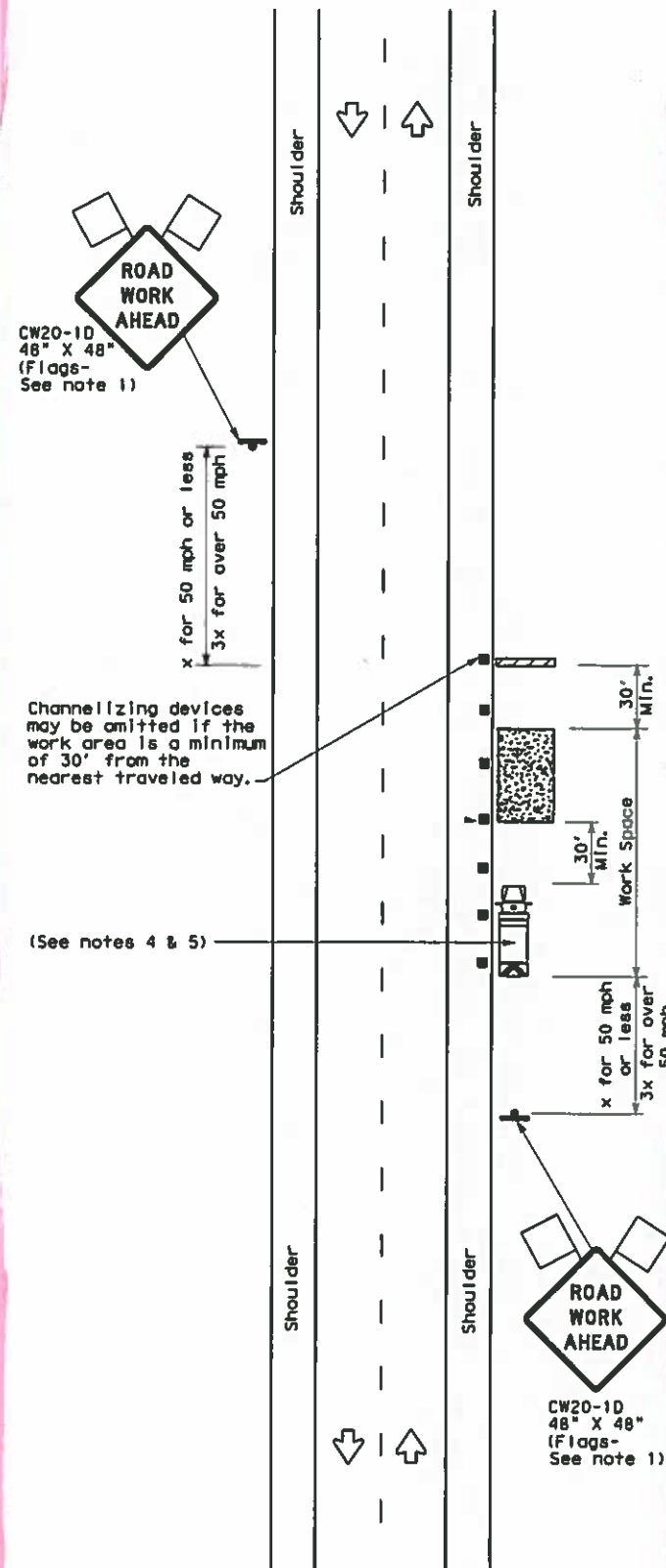
Date





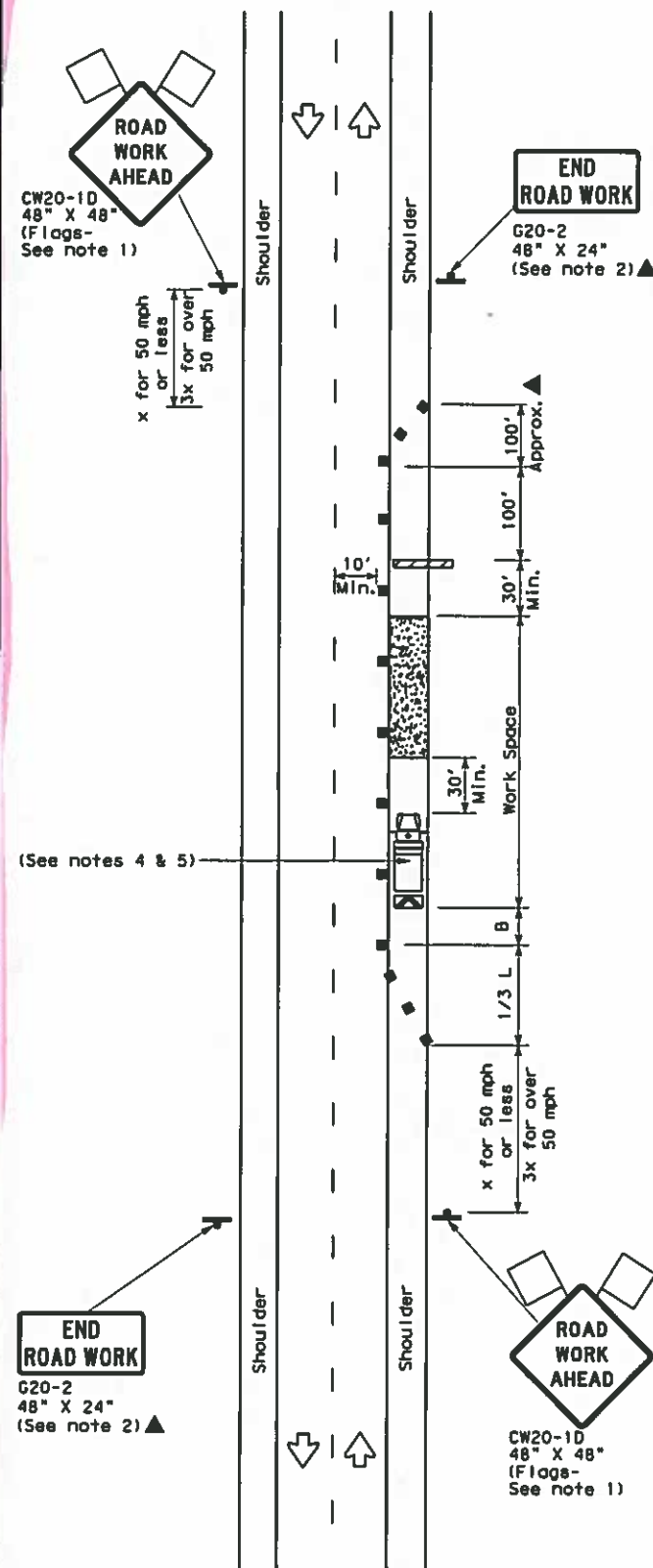
DISCLAIMER: The use of this standard is governed by the "Texas Engineering Practice Act". No warranty of any kind is made by TxDOT for any purpose whatsoever. TxDOT assumes no responsibility for the consequences of any use of this standard to other formats or for incorrect results or damages resulting from its use.

DATE: FILE:



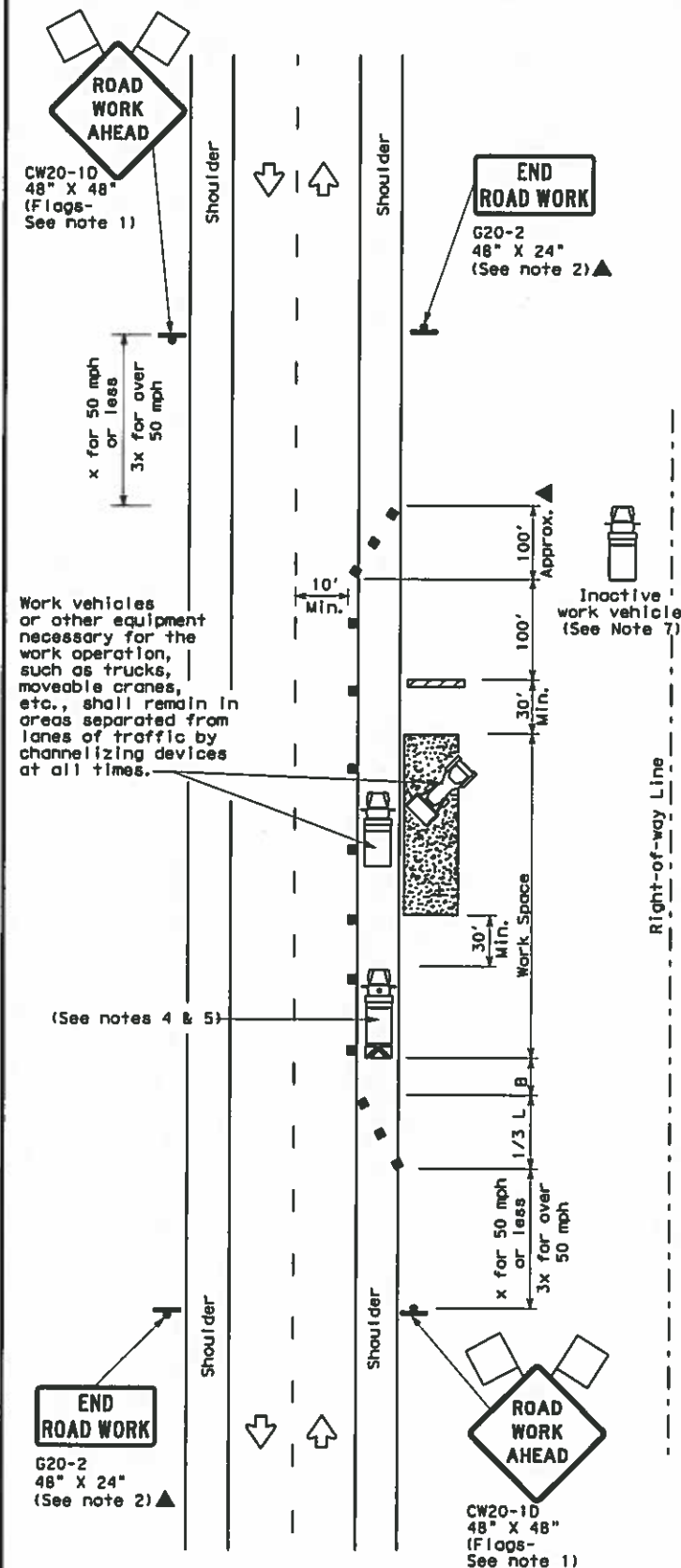
TCP (2-1a)

WORK SPACE NEAR SHOULDER  
Conventional Roads



TCP (2-1b)

WORK SPACE ON SHOULDER  
Conventional Roads



TCP (2-1c)

WORK VEHICLES ON SHOULDER  
Conventional Roads

LEGEND			
	Type 3 Barricade		Channelizing Devices
	Heavy Work Vehicle		Truck Mounted Attenuator (TMA)
	Trailer Mounted Flashing Arrow Board		Portable Changeable Message Sign (PCMS)
	Sign		Traffic Flow
	Flag		Flagger

Posted Speed *	Formula	Minimum Desirable Taper Lengths * %			Suggested Maximum Spacing of Channelizing Devices		Minimum Sign Spacing "X" Distance	Suggested Longitudinal Buffer Space "B"
		10' Offset	11' Offset	12' Offset	On a Taper	On a Tangent		
30	$L = \frac{WS^2}{60}$	150'	165'	180'	30'	60'	120'	90'
35		205'	225'	245'	35'	70'	160'	120'
40		265'	295'	320'	40'	80'	240'	155'
45	L = WS	450'	495'	540'	45'	90'	320'	195'
50		500'	550'	600'	50'	100'	400'	240'
55		550'	605'	660'	55'	110'	500'	295'
60		600'	660'	720'	60'	120'	600'	350'
65		650'	715'	780'	65'	130'	700'	410'
70		700'	770'	840'	70'	140'	800'	475'
75		750'	825'	900'	75'	150'	900'	540'

\* Conventional Roads Only

\*\* Taper lengths have been rounded off.

L=Length of Taper (FT) W=Width of Offset (FT) S=Posted Speed (MPH)

TYPICAL USAGE				
MOBILE	SHORT DURATION	SHORT TERM STATIONARY	INTERMEDIATE TERM STATIONARY	LONG TERM STATIONARY
	✓	✓	✓	✓

#### GENERAL NOTES

- Flags attached to signs where shown, are REQUIRED.
- All traffic control devices illustrated are REQUIRED, except those denoted with the triangle symbol may be omitted when stated in the plans, or for routine maintenance work, when approved by the Engineer.
- Stockpiled material should be placed a minimum of 30 feet from nearest traveled way.
- Shadow Vehicle with TMA and high intensity rotating, flashing, oscillating or strobe lights. A Shadow Vehicle with a TMA should be used anytime it can be positioned 30 to 100 feet in advance of the area of crew exposure without adversely affecting the performance or quality of the work. If workers are no longer present but road or work conditions require the traffic control to remain in place, Type 3 Barricades or other channelizing devices may be substituted for the Shadow Vehicle and TMA.
- Additional Shadow Vehicles with TMAs may be positioned off the paved surface, next to those shown in order to protect a wider work space.
- See TCP(5-1) for shoulder work on divided highways, expressways and freeways.
- Inactive work vehicles or other equipment should be parked near the right-of-way line and not parked on the paved shoulder.
- CW21-5 "SHOULDER WORK" signs may be used in place of CW21-1D "ROAD WORK AHEAD" signs for shoulder work on conventional roadways.

For construction or maintenance contract work, specific project requirements for shadow vehicles can be found in the project GENERAL NOTES for Item 502, Barricades, Signs and Traffic Handling.

Texas Department of Transportation  
Traffic Operations Division

### TRAFFIC CONTROL PLAN CONVENTIONAL ROAD SHOULDER WORK

TCP(2-1)-12

© TxDOT December 1985		DN1 TxDOT	CK1 TxDOT	DN1 TxDOT	CK1 TxDOT
REVISIONS		COMT	SECT	JOB	HIGHWAY
2-94	2-12				
8-95					
1-97					
4-98					
		DIST	COUNTY	SHEET NO.	
				161	