

**PLAT RECORDING SHEET**

**PLAT NAME:** Greens at Brentford Replat No. 1

**PLAT NO:** \_\_\_\_\_

**ACREAGE:** 8.994

**LEAGUE:** John McDonald Survey

**ABSTRACT NUMBER:** 291

**NUMBER OF BLOCKS:** 1

**NUMBER OF LOTS:** 0

**NUMBER OF RESERVES:** 1

**OWNERS:** Greens at Brentford LP, a Texas Limited Liability Company

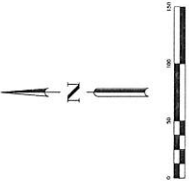
\_\_\_\_\_  
(DEPUTY CLERK)





VICINITY MAP  
KEY MAP PLAT NO. 8279

- GENERAL NOTES
1. "U.C." indicates "Utility Easement".
  2. "B.L." indicates "Building Line".
  3. "W.L.E." indicates "Water Line Easement".
  4. "S.W.L.E." indicates "Storm Sewer Easement".
  5. "S.S.E." indicates "Storm Sewer Easement".
  6. "S.S.E.P." indicates "Storm Sewer Easement".
  7. "S.S.E.P.P." indicates "Storm Sewer Easement".
  8. "S.S.E.P.P.P." indicates "Storm Sewer Easement".
  9. "S.S.E.P.P.P.P." indicates "Storm Sewer Easement".
  10. "S.S.E.P.P.P.P.P." indicates "Storm Sewer Easement".
  11. "S.S.E.P.P.P.P.P.P." indicates "Storm Sewer Easement".
  12. "S.S.E.P.P.P.P.P.P.P." indicates "Storm Sewer Easement".
  13. "S.S.E.P.P.P.P.P.P.P.P." indicates "Storm Sewer Easement".
  14. "S.S.E.P.P.P.P.P.P.P.P.P." indicates "Storm Sewer Easement".
  15. "S.S.E.P.P.P.P.P.P.P.P.P.P." indicates "Storm Sewer Easement".
  16. "S.S.E.P.P.P.P.P.P.P.P.P.P.P." indicates "Storm Sewer Easement".
  17. "S.S.E.P.P.P.P.P.P.P.P.P.P.P.P." indicates "Storm Sewer Easement".
  18. "S.S.E.P.P.P.P.P.P.P.P.P.P.P.P.P." indicates "Storm Sewer Easement".
  19. "S.S.E.P.P.P.P.P.P.P.P.P.P.P.P.P.P." indicates "Storm Sewer Easement".
  20. "S.S.E.P.P.P.P.P.P.P.P.P.P.P.P.P.P.P." indicates "Storm Sewer Easement".
  21. "S.S.E.P.P.P.P.P.P.P.P.P.P.P.P.P.P.P.P." indicates "Storm Sewer Easement".
  22. "S.S.E.P.P.P.P.P.P.P.P.P.P.P.P.P.P.P.P.P." indicates "Storm Sewer Easement".
  23. "S.S.E.P.P.P.P.P.P.P.P.P.P.P.P.P.P.P.P.P.P." indicates "Storm Sewer Easement".
  24. "S.S.E.P.P.P.P.P.P.P.P.P.P.P.P.P.P.P.P.P.P.P." indicates "Storm Sewer Easement".
  25. "S.S.E.P." indicates "Storm Sewer Easement".
  26. "S.S.E.P." indicates "Storm Sewer Easement".
  27. "S.S.E.P." indicates "Storm Sewer Easement".
  28. "S.S.E.P." indicates "Storm Sewer Easement".
  29. "S.S.E.P." indicates "Storm Sewer Easement".
  30. "S.S.E.P." indicates "Storm Sewer Easement".

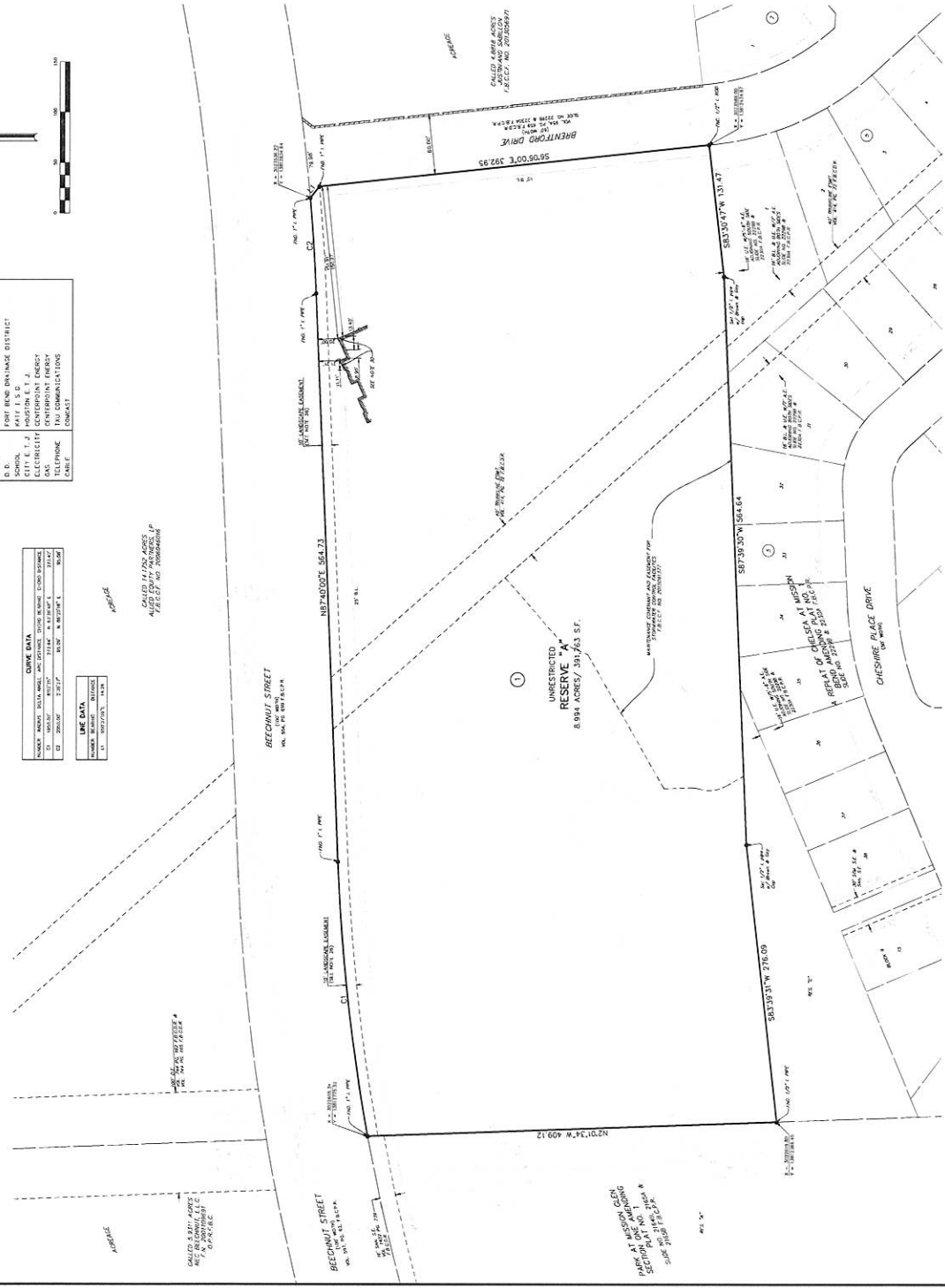


DISTRICT NAMES	
W.U.B.	WATERBURY DISTRICT
W.C.I.D.	WATERBURY DISTRICT
S.D.	SOUTH DUNSMUIR DISTRICT
CITY E.T.J.	CITY OF FORT BEND COUNTY
ELECTRICITY	ELECTRICITY
TELEPHONE	TELEPHONE
CABLE	CABLE

CIVIL DATA	
OWNER	UNRESTRICTED RESERVE 'A'
PROJECT	UNRESTRICTED RESERVE 'A'
DATE	SEPTEMBER 2017
BY	BOB WOODRUFF
CHECKED	BOB WOODRUFF
DATE	SEPTEMBER 2017

LINE DATA	
LINE	UNRESTRICTED RESERVE 'A'
DATE	SEPTEMBER 2017
BY	BOB WOODRUFF
CHECKED	BOB WOODRUFF
DATE	SEPTEMBER 2017

APPROXIMATE  
CALLED 14.725 ACRES  
ALSO SEE PLAT NO. 8279  
FOR FULL DESCRIPTION



# GREENS AT BRENTFORD REPLAT NO 1

A SUBDIVISION OF 8.994 ACRES OF LAND  
LOCATED IN THE  
JOHN McDONALD SURVEY, A-291  
FORT BEND COUNTY, TEXAS  
ALSO BEING A REPLAT OF GREENS AT BRENTFORD  
RECORDED AT PLAT NO. 20150177, F.B.C.P.R.

REASON FOR REPLAT:  
TO CREATE A DUAL BUILDING LINE ADJACENT TO BEACHNUT STREET  
RESERVES: 1  
SCALE: 1" = 50'  
DATE: SEPTEMBER, 2017



**Brown & Gay Engineers, Inc.**  
1917 ST. JAMES PLACE, SUITE 100  
HOUSTON, TEXAS 77056  
TEL: 281-558-8700 • WWW.BROWNANDGAY.COM  
TENTH DISTRICT SURVEYING PLAT NO. 101906-00