



Fort Bend County Engineering
FORT BEND COUNTY, TEXAS

Richard W. Stolleis, P.E.
County Engineer

August 21, 2017

Commissioner W. A. "Andy" Meyers
Fort Bend County Precinct 3
22333 Grand Corner Drive
Katy, Texas 77494

Commissioner James Patterson
Fort Bend County Precinct 4
12919 Dairy Ashford Road
Sugar Land, Texas 77478

RE: Long Meadow Farms, Section 37 - Traffic Control Plan
Long Meadow Farms, Section 40
Long Meadow Farms, Section 43

Dear Commissioner:

Long Meadow Farms Sec. 37 (Pct. 3) and Sec. 40 (Pct. 4):

Fort Bend County Engineering has completed and recommends approval of the traffic control plans for the above referenced subdivisions. The public hearing date for acceptance of the plans is being scheduled.

Long Meadow Farms Sec. 43 (Pct. 4):

The Construction Completion letter was issued on August 21, 2017, which started the one year maintenance period. Fort Bend County Engineering has completed and recommends approval of the traffic control plan for the above referenced subdivision. The public hearing date for acceptance of the plan is being scheduled.

A copy of the traffic control plans are attached for your review. If you should have any questions, please give me a call.

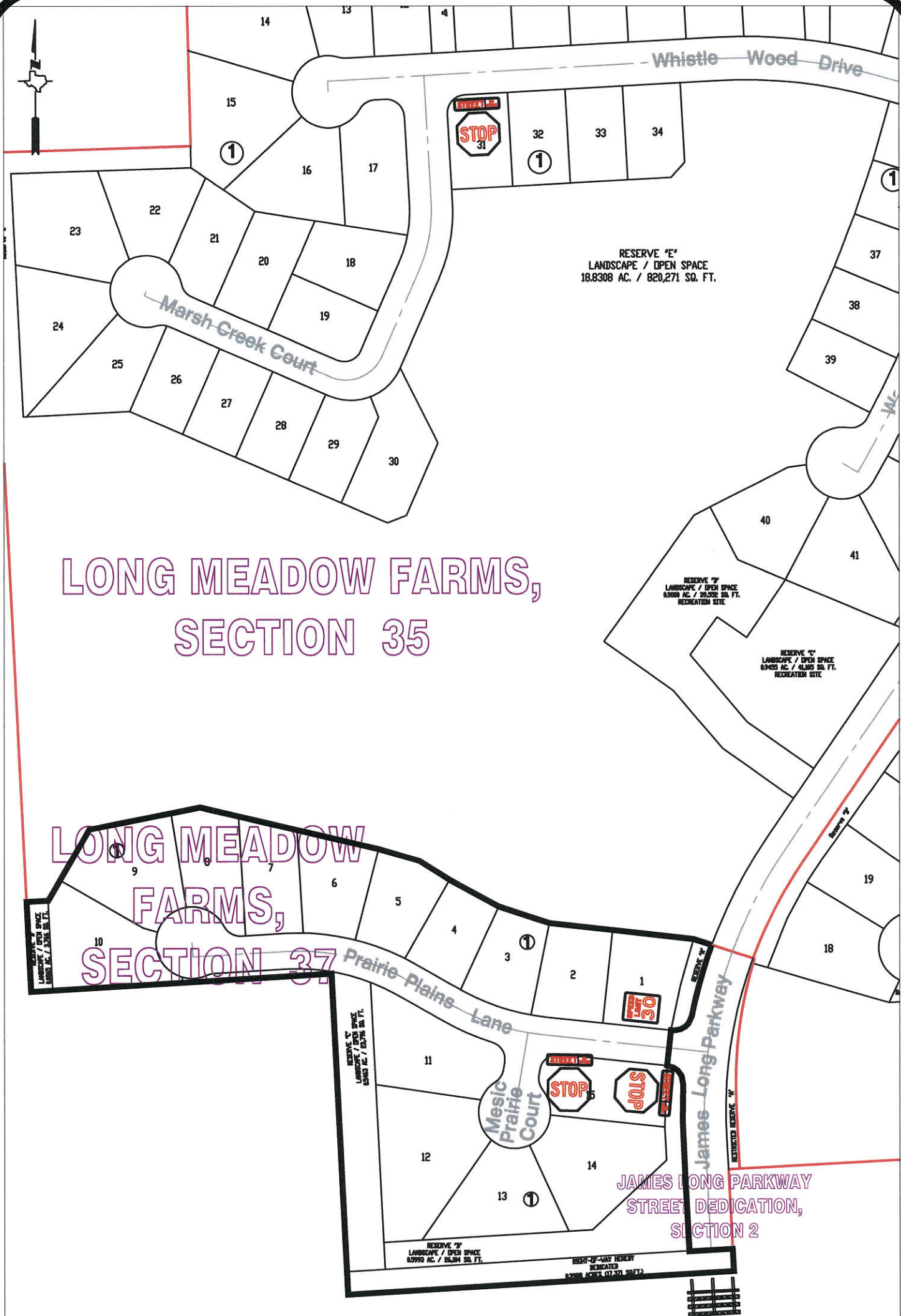
Sincerely,

A handwritten signature in blue ink, appearing to read "Chris Debaillon".

Chris Debaillon, PE, PTOE
Assistant County Engineer – Traffic

CD/mjs

cc: Judge Robert E. Hebert, County Judge
Marc Grant - FBC Road & Bridge
Brian Fields - Signage Department
File



LONG MEADOW FARMS,
SECTION 35

LONG MEADOW
FARMS,
SECTION 37

JAMES LONG PARKWAY
STREET DEDICATION,
SECTION 2

Note:
The purpose of this traffic control plan is to establish traffic control for Long Meadow Farms, Section 37.

Drawn By: L. Brdecka
Date: 8-21-17
Approved By: Chris Deballon, PE PTOE
Date: 8/22/17
Scale: 1" = 200'-0"

Long Meadow Farms,
Section 37
Control Map and
Traffic Sign Layout
Fort Bend County Engineering Dept.
301 Jackson Street
Richmond, Texas 77469



<p>Note:</p> <p>The purpose of this traffic control plan is to establish traffic control for Long Meadow Farms, Section 43.</p>	<p>Drawn By: L. Brdecka</p> <p>Date: 8-15-17</p> <p>Approved By: Chris Debaillon, PE PTOE</p> <p>Date: 8/22/17</p> <p>Scale: 1" = 200'-0"</p>	<p>Long Meadow Farms, Section 43</p> <p>Control Map and Traffic Sign Layout</p> <p>Fort Bend County Engineering Dept. 301 Jackson Street Richmond, Texas 77469</p>
--	---	--