



Fort Bend County Engineering
FORT BEND COUNTY, TEXAS

Richard W. Stolleis, P.E.
County Engineer

August 10, 2017

Judge Robert E. Hebert
Fort Bend County Judge
301 Jackson Street, Suite 719
Richmond, Texas 77406-0148

Re: Public Road Connection (Tie-in Connection, Right Turn Lane and Traffic Signal Improvements) at FM723 at Canyon Fields Drive within the Sendero Development on behalf of Meritage Homes of Texas, LLC and Pulte Homes of Texas LP -Sponsorship

Honorable Judge Hebert:

Fort Bend County Engineering Department has received and reviewed a request (letter attached) from Costello, Engineering & Surveying for Fort Bend County to sponsor a project for a public road connection (tie-in connection, right turn lane, and traffic signal improvements), at FM723 at Canyon Fields Drive within Sendero Development. It will improve traffic flow along FM723.

Any and all cost involved with the project will be borne by Meritage Homes of Texas, LLC and Pulte Homes of Texas LP. There will be no cost to Fort Bend County.

The Texas Department of Transportation request that an agency, such as Fort Bend County, act as a sponsor for the project. This means that the permit for the work will be issued in the name of Fort Bend County and the County accepts responsibility for the terms and conditions of the permit.

We recommend acceptance of the sponsorship and request that this item be placed on the 8/22/2017 Commissioner's Court agenda. We have prepared a letter to Texas Department of Transportation, for the County Judge's signature.

If there are any questions please do not hesitate to call.

Sincerely,

Rick J. Staigle, PE, PTOE
First Assistant County Engineer

Attachment: Scope of Work

cc: Mr. Roy Cordes, Jr. FBC Attorney
Commissioner W. A. "Andy" Meyers, Pct. 3
File

301 Jackson St., Suite 401, Richmond, TX 77469
Phone 281-633-7500

DRAFT

(To be placed on Co. Judge stationery)
(Call to have it e-mailed by Mary Jane
Sowa 281-633-7519)

Current date

Mr. Quincy Allen, P.E.
District Engineer, Houston District
Texas Department of Transportation
P.O. Box 1386
Houston, TX 77251-1386

Re: ***Public Road Connection (Tie-in Connection, Right Turn Lane and Traffic Signal Improvements) at FM723 at Canyon Fields Drive within the Sendero Development on behalf of Meritage Homes of Texas, LLC and Pulte Homes of Texas LP -Sponsorship***

Dear Mr. Allen:

Fort Bend County has received and reviewed a request from Costello Engineering & Surveying for Fort Bend County to sponsor a Texas Department of Transportation project on behalf of Meritage Homes of Texas, LLC and Pulte Homes of Texas LP, for a public road connection (tie-in connection, right turn lane and traffic signal improvements), at FM723 at Canyon Fields Drive within the Sendero Development, at no cost to the County.

The request was approved by Fort Bend County Commissioners Court at their meeting dated _____. We request that a permit for the public road connection tie-in, right turn lane, and traffic signal improvements be issued with Fort Bend County as sponsor for this project.

If there are any questions or need for additional information, please call Rick Staigle in our Engineering Department at 281-633-7509.

Sincerely,

Robert E. Hebert
Fort Bend County Judge

REH/mw

Attachments: Resolution
Drawing

cc: Mr. Jon R. VanderWilt, P.E., Costello Engineering & Surveying
jvanderwilt@costelloinc.com
File

THE STATE OF TEXAS §

COUNTY OF FORT BEND §

**RESOLUTION TO SPONSOR A PROJECT FOR A PUBLIC ROAD CONNECTION
(TIE-IN CONNECTION, RIGHT TURN LANE AND TRAFFIC SIGNAL
IMPROVEMENTS) AT FM 723 AT CANYON FIELDS DRIVE WITHIN SENDERO
DEVELOPMENT ON BEHALF OF MERITAGE HOMES OF TEXAS, LLC AND PULTE
HOMES OF TEXAS LP**

On this _____ day of _____, 2017, the Commissioners Court, sitting as the governing body of Fort Bend County, Texas, at a regular meeting, upon motion of Commissioner _____, seconded by Commissioner _____, duly put and carried;

WHEREAS, the proposed sponsorship project includes the installation of a public road connection (tie-in connection, right turn lane and traffic signal improvements) at FM723 at Canyon Fields Drive within the Sendero Development.

WHEREAS, the funding for such sponsorship of the project is to be provided through sources other than Fort Bend County.

NOW, THEREFORE, BE IT RESOLVED that Fort Bend County expresses its support and sponsorship of such project with the Texas Department of Transportation to cause such improvements to be made at FM723 at Canyon Fields Drive within the Sendero Development.

FORT BEND COUNTY

By: _____
Robert E. Hebert, County Judge

ATTEST:

Laura Richard, County Clerk

August 7, 2017



The Honorable Judge Robert E. Hebert
Fort Bend County Judge
301 Jackson Street, Suite 719
Richmond, Texas 77469

Re: Fort Bend County Municipal Utility District No. 132
Request for Sponsorship Letter
Construction Plans for Proposed Right Turn Lane and Traffic Signal Improvements at
FM 723 and Canyon Fields Dr.
C.I. Job No. 2004117-CR4-DS-101

Dear Honorable Judge Hebert:

We respectfully request that Fort Bend County consider sponsoring the project referenced above. The Texas Department of Transportation ("TxDOT") will only consider a permit for the extension of Canyon Fields Drive east of FM 723 if you agree to sponsor the work on behalf of Fort Bend County Municipal Utility District No. 132 (the "District").

We are preparing the street connection and right-turn lane permit application to submit to the Texas Department of Transportation (TxDOT) for the proposed street tie-in of Canyon Fields Dr. at FM 723. At the connection, Canyon Fields Dr. will be a 4-lane roadway with a left turn lane. FM 723 will be widened to provide a northbound right-turn lane at the intersection. Meritage Homes of Texas, LLC and Pulte Homes of Texas, LP, the developers in the District, will fund the cost of construction. There will be no expense to Fort Bend County. The Construction Plans were prepared in accordance with TxDOT's street connection permit requirements.

We submitted the Construction Plans to the Fort Bend County Engineer and the Fort Bend County Drainage District last Friday, August 4, 2017 for review and comment. Our Traffic Impact Analysis was sent to the County Engineer on July 24, 2017.

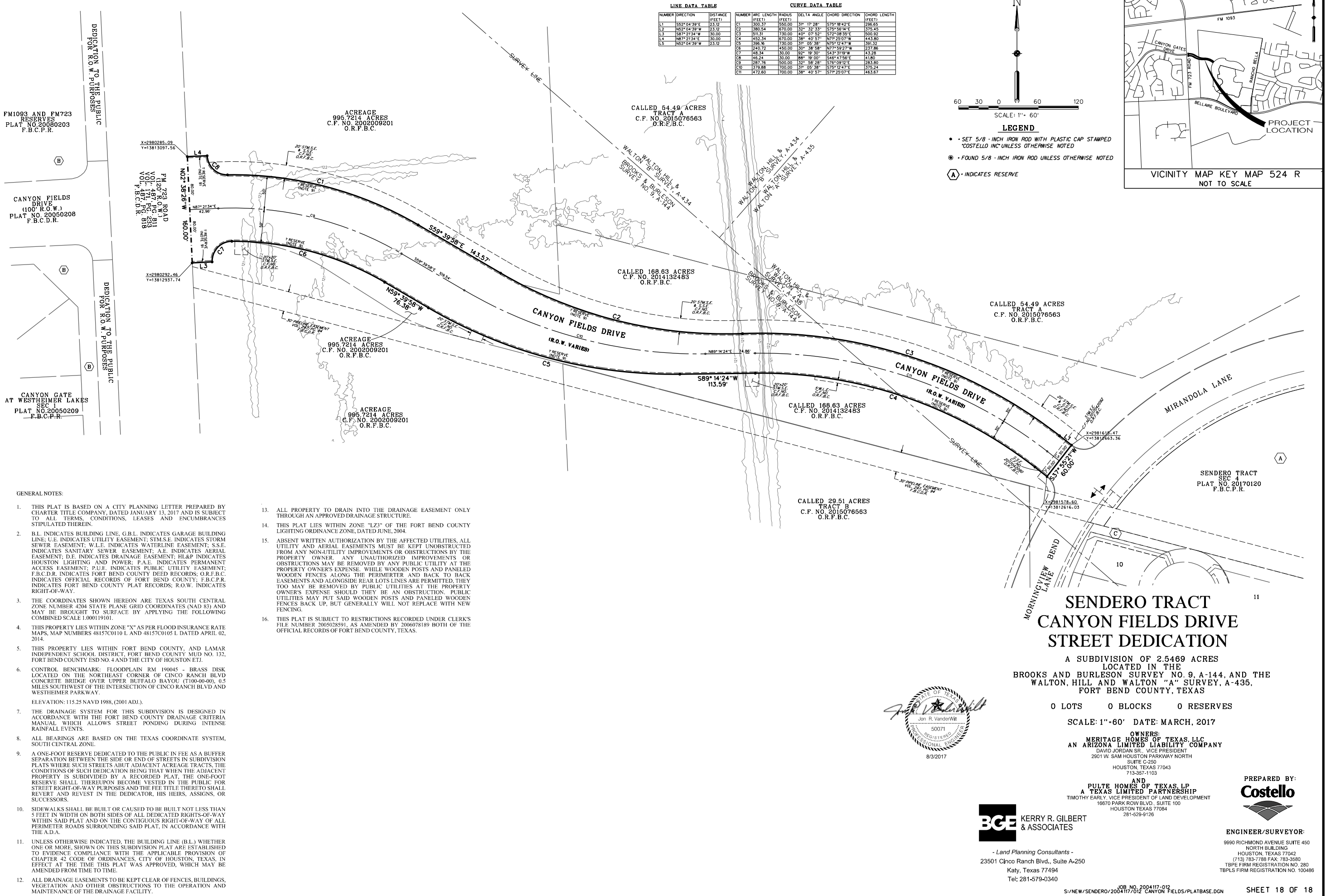
Please call me if you have any questions or need any additional information. Thank you in advance for your prompt attention to our request

Sincerely,
COSTELLO, INC.

A handwritten signature in blue ink that reads "Jon R. VanderWilt". The signature is fluid and cursive.

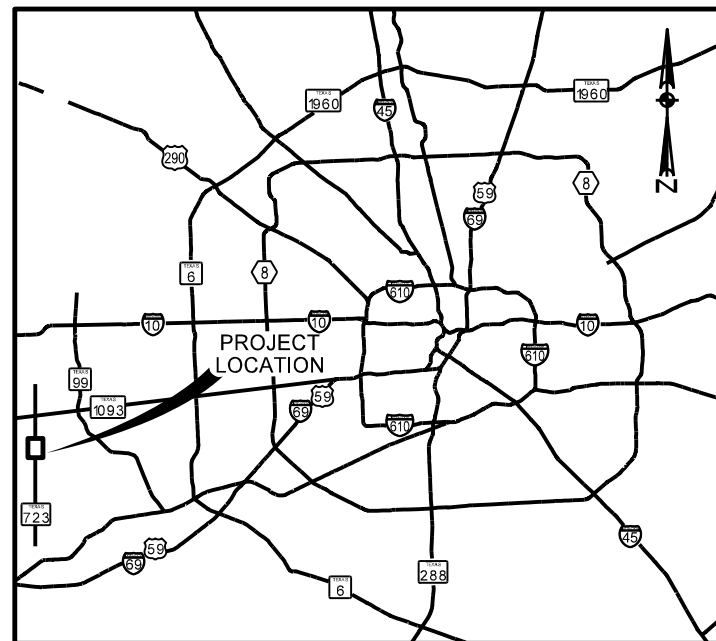
Jon R. VanderWilt, P.E.

S:\NEW\Sendero\2004117-012 Canyon Fields Drive\PLATBASE.DGN



CONSTRUCTION PLANS
FOR
PROPOSED RIGHT TURN LANE
AND
TRAFFIC SIGNAL IMPROVEMENTS
AT
FM 723 AND CANYON FIELDS DR.

LOCATED IN
FORT BEND COUNTY, TEXAS



VICINITY MAP
SCALE: N.T.S.



PROJECT LOCATION MAP
KEY MAP : 524-L
SCALE: N.T.S.

INDEX OF SHEETS

SHEET NO.	DESCRIPTION
1	COVER SHEET
2	CONSTRUCTION NOTES
3	OVERALL PROJECT LAYOUT
4	CROSS SECTIONS AND TYPICAL SECTIONS
5	PROPOSED PAVING FOR FM 723
6	MISCELLANEOUS DETAILS
7	POLLUTION PREVENTION PLAN LAYOUT
8	POLLUTION PREVENTION PLAN DETAILS
9	TRAFFIC CONTROL PLAN - CONVENTIONAL ROAD TCP(2-1)-12 (TxDOT)
10	SUMMARY OF TRAFFIC SIGNAL QUANTITIES
11	PERMANENT SIGNAL NOTES
12	UTILITY NOTES
13 - 14	PROPOSED SIGNAL LAYOUT
15	EXISTING PAVEMENT MARKINGS AND SIGNING
16 - 17	PROPOSED PAVEMENT MARKINGS AND SIGNING
18 - 19	SINGLE MAST ARM ASSEMBLY SMA-100(1)-12 TO SMA-100(2)-12 (TxDOT)
20 - 24	LONG MAST ARM ASSEMBLY LMA-(1)-12 TO LMA-(5)-12 (TxDOT)
25	MAST ARM CONNECTIONS MA-C-12 (TxDOT)
26	MAST ARM POLE DETAILS MA-D-12 (TxDOT)
27	TRAFFIC SIGNAL POLE FOUNDATION TS-FD-12 (TxDOT)
28	SIGNAL DETAILS/STANDARDS OVERHEAD STREET NAME SIGN MOUNTING DETAILS OSNS/MD (HOU DIST)
29	SIGNAL DETAILS/STANDARDS CONSTRUCTION DETAILS FOR POLE MOUNTED PEDESTRIAN SIGNAL CD/PMPS (HOU DIST)
30	ROADSIDE FLASHING BEACON ASSEMBLY RFBA-13 (TxDOT)
31 - 35	ELECTRICAL DETAILS CONDUITS & NOTES ED(1)-14, ED(3)-14 TO ED(8)-14, ED(11)-14 (TxDOT)
36 - 37	TRAFFIC SIGNAL WORK WZ(BTS-1) AND WZ(BTS-2)-13 (TxDOT)
38	ACCESS PAD DETAILS (TxDOT)
39 - 41	PAVEMENT MARKING PM(1)-12, PM(2)-12, PM(3)-12 (TxDOT)
42	PAVEMENT MARKING PM(DOT)-11 (TxDOT)
43	TYPICAL SIGN REQUIREMENTS TSR(4)-13 (TxDOT)
44 - 47	SIGN MOUNTING DETAILS SMD(GEN), SMD(SLIP1-3) (TxDOT)

NOTES:

- SPECIFICATIONS ADOPTED BY THE TEXAS DEPARTMENT OF TRANSPORTATION JUNE, 2004 AND SPECIFICATIONS ITEM SHALL GOVERN THIS PROJECT.

- CONTROL BENCHMARK AND TBM INFORMATION:

CONTROL BENCHMARK

HARRIS COUNTY FLOODPLAIN REFERENCE MARK NO. 100075 BEING A BRASS DISC STAMPED "100075" LOCATED ON WEST SIDE OF INTERSTATE HIGHWAY 45 SOUTHBOUND FEEDER ROAD APPROXIMATELY 1.1 MILES SOUTH OF THE INTERSECTION OF INTERSTATE HIGHWAY 45 AND RAYFORD SAWDUST.

ELEVATION 115.07 (NAVD 88, 2001 ADJ.)

TBM "A1"

CHISELED SQUARE CUT ON "B" INLET LOCATED ON WEST SIDE OF INTERSTATE HIGHWAY 45 SOUTHBOUND FEEDER ROAD AND BEING APPROXIMATELY 400' NORTH OF THE INTERSECTION OF SAID FEEDER ROAD AND SPRING CROSSING.

ELEVATION 127.13



Engineering and Surveying
9990 Richmond Avenue, Suite 450 N
Houston, Texas 77042
(713) 783-7788 (713) 783-3580, Fax

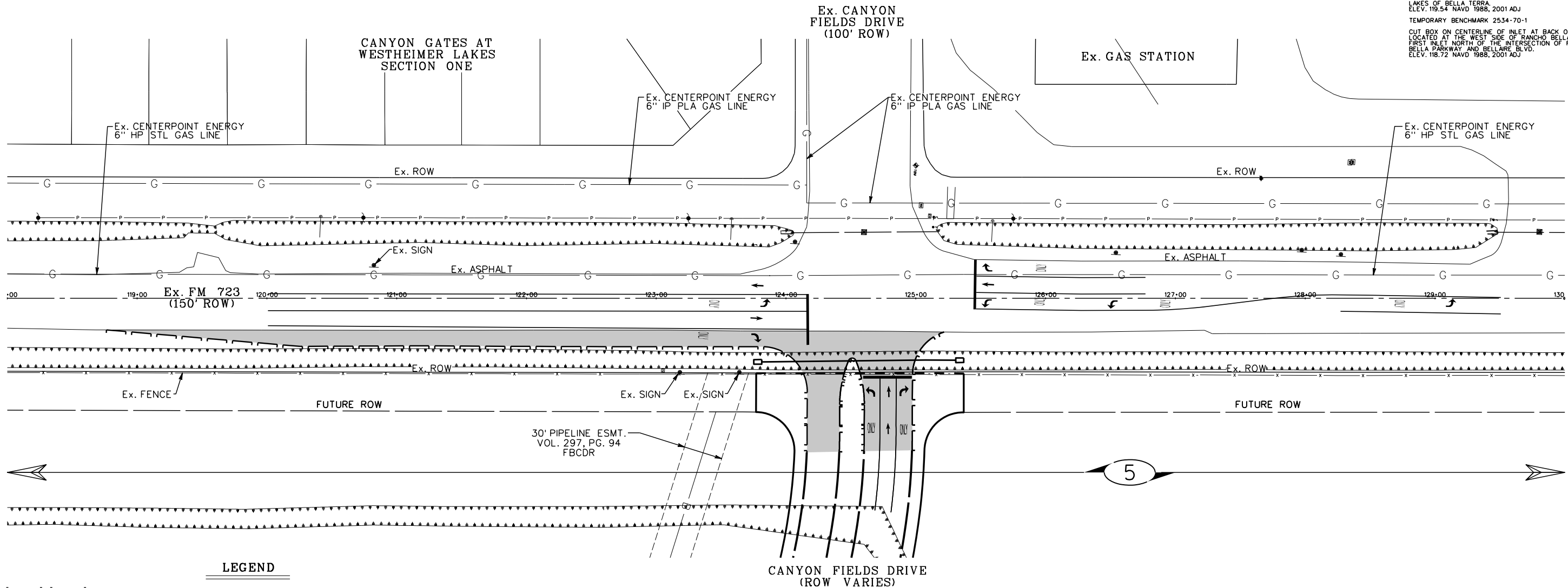
TBPE FIRM REG. No. 280
TBPLS FIRM REG. No. 100486

JOB No: 2004-117-CR4-DV/DS

AUGUST 2017



BENCHMARK RM NO. 190045
BRASS DISK LOCATED ON THE NORTHEAST CORNER OF CINCO RANCH BLVD. CONCRETE BRIDGE OVER UPPER BUFFALO BAYOU (1100-00-00), 0.5 MILES SOUTHWEST OF THE INTERSECTION OF CINCO RANCH BLVD. AND WESTHEIMER PARKWAY
ELEV. 115.25 NAVD 1988, 2001 ADJ.
TEMPORARY BENCHMARK 2534-69-1
CUT BOX ON CENTERLINE OF INLET AT BACK OF CURB, LOCATED AT THE WEST SIDE OF RANCHO BELLA PARKWAY, FOURTH INLET NORTH OF THE INTERSECTION OF RANCHO BELLA PARKWAY AND BELLARE BLVD. DIRECTLY ACROSS FROM PADOVA DR. THE ENTRANCE TO EXISTING SUBDIVISION LAKES OF BELLA TERRA
ELEV. 119.54 NAVD 1988, 2001 ADJ.
TEMPORARY BENCHMARK 2534-70-1
CUT BOX ON CENTERLINE OF INLET AT BACK OF CURB, LOCATED AT THE WEST SIDE OF RANCHO BELLA PARKWAY, FIRST INLET NORTH OF THE INTERSECTION OF RANCHO BELLA PARKWAY AND BELLARE BLVD.
ELEV. 118.72 NAVD 1988, 2001 ADJ.



LEGEND

- | | | | |
|--|--------------------------------------|--|----------------------------------|
| | • PROP. EDGE OF ASPHALT | | ▪ EXIST. GAS LINE |
| | • PROP. EDGE OF PAVEMENT (BY OTHERS) | | ▪ EXIST. OVERHEAD/BURED POWER |
| | • PROP. STM INLET | | ▪ EXIST. EPCO 24" CRUDE OIL LINE |
| | • EXIST. POWER POLE | | ▪ EXIST. FENCE |
| | • EXIST. IRRIGATION VALVE | | ▪ EXIST. SWALE |
| | • EXIST. TREE | | |
| | • EXIST. TRAFFIC SIGN | | |
| | • EXIST. WATER VALVE | | |
| | • EXIST. FIRE HYDRANT | | |
| | • EXIST. STORM INLET | | |
| | • SHEET REFERENCE | | |
| | • EXIST. FIBER OPTIC | | |
| | • EXIST. WATER METER | | |

SCALE: 1"=80' (11"X17")
1"=40' (22"X34")

P:\2014\2014-117-CR4-DV\2014-117-CR4-DV_01_OVERALL_LAYOUT.dwg

NO.	REVISION	DATE	BY

DESIGNED BY: _____
DESIGN CHECKED BY: _____
DRAWN BY: _____
COGO CHECKED BY: _____
SURVEY CHECKED BY: _____
QA/QC BY: _____ DATE: _____
QA/QC REVISIONS BY: _____



Engineering and Surveying
9990 Richmond Avenue, Suite 450 N
Houston, Texas 77042
(713) 783-7788 (713) 783-3580, Fax
TBPE FIRM REG. No. 280
TBPLS FIRM REG. No. 100486

FORT BEND COUNTY MUD No.132
TURN LANE AND SIGNAL IMPROVEMENTS CANYON FIELDS
FM 723 @ CANYON FIELDS DR.
OVERALL LAYOUT

SHEET 3
OF 47 SHEETS
JOB NO. 2014-117-CR4-DV

MARK	STATION	OFFSET
1	OMT	OMT
2	OMT	OMT
3	4+19.66	3.50' LT. X
4	5+35.99	3.50' LT.
5	5+78.42	7.46' LT.
6	6+63.24	15.50' LT.
7	7+03.72	7.36' LT.
8	7+03.78	3.73' LT.
9	6+68.71	4.50' RT.
10	5+32.85	12.81' RT.
11	4+95.46	15.50' RT.
12	4+20.74	15.50' RT. X

X LIMITS OF PROJECT

MARK	STATION	OFFSET
17	7+61.95	4.99' RT.
18	7+91.45	0.65' RT.
19	8+06.54	0.85' RT.
20	9+22.88	5.19' LT.
21	9+60.92	6.70' LT.
22	10+07.83	4.94' LT.
23	10+07.91	0.95' LT.
24	7+95.29	15.83' RT.
25	7+61.95	11.66' RT.

INDICATES LIMITS (BY OTHERS)

C/L STA. 3+00.00 ~ CANYON FIELDS DRIVE
C/L STA. 45+32.11 ~ FM 723

STA. 4+17.78
40.50' LT.
T/C 122.64
LIMITS OF PROJECT

STM. M.H. 10439
STA. 4+44.00
60.21' LT.

FUTURE COMMERCIAL DEVELOPMENT

FUTURE COMMERCIAL DEVELOPMENT

PRECAST
6'x4'x173.11"
FITTING
STA. 6+74.24
50.49' LT.

STA. 6+89.52
40.50' LT.
T/C 123.47

STM. M.H. 10440
STA. 6+32.82
49.94' LT.

STA. 6+00.00
40.50' LT.
T/C 125.40

FUTURE COMMERCIAL DEVELOPMENT

STA. 6+88.01
40.50' RT.
T/C 123.50

STA. 7+13.33
65.50' RT.
T/C 124.75

STA. 7+48.33
66.88' RT.
T/C 124.75

STA. 7+72.62
41.89' RT.
T/C 121.68

STA. 7+66.79
50.00' RT.
T/C 121.67

STA. 8+25.00
50.00' RT.
T/C 121.67

STA. 8+58.00
50.00' RT.
T/C 120.71

STA. 9+84.10
40.42' LT.

FUTURE COMMERCIAL DEVELOPMENT

PRECAST
6'x4'x172.49"
FITTING
STA. 9+84.10
40.42' LT.

STA. 10+25.00
29.23' LT.
T/C 121.45

FUTURE SENDERO TRACT SECTION FIVE

BENCHMARK RM NO. 190045

BRASS DISK LOCATED ON THE NORTHEAST CORNER OF CINCO RANCH BLVD. CONCRETE BRIDGE OVER UPPER BUFFALO CANYON (1100-00-001) 0.5 MILES SOUTHWEST OF THE INTERSECTION OF CINCO RANCH BLVD. AND WESTHEIMER PARKWAY
ELEV. 115.25 NAVD 1988, 2001 ADJ.
TEMPORARY BENCHMARK 2534-69-1
CUT BOX ON CENTERLINE OF INLET AT BACK OF CURB. LOCATED AT THE WEST SIDE OF RANCHO BELLA PARKWAY, FIRST INLET NORTH OF THE INTERSECTION OF RANCHO BELLA PARKWAY AND BELLARE BLVD. DIRECTLY ACROSS FROM PADOVA DR. THE ENTRANCE TO EXISTING SUBDIVISION LAKES OF BELLA TERRA
ELEV. 119.54 NAVD 1988, 2001 ADJ.
TEMPORARY BENCHMARK 2534-70-1
CUT BOX ON CENTERLINE OF INLET AT BACK OF CURB. LOCATED AT THE WEST SIDE OF RANCHO BELLA PARKWAY, FIRST INLET NORTH OF THE INTERSECTION OF RANCHO BELLA PARKWAY AND BELLARE BLVD.
ELEV. 118.72 NAVD 1988, 2001 ADJ.

NOTES

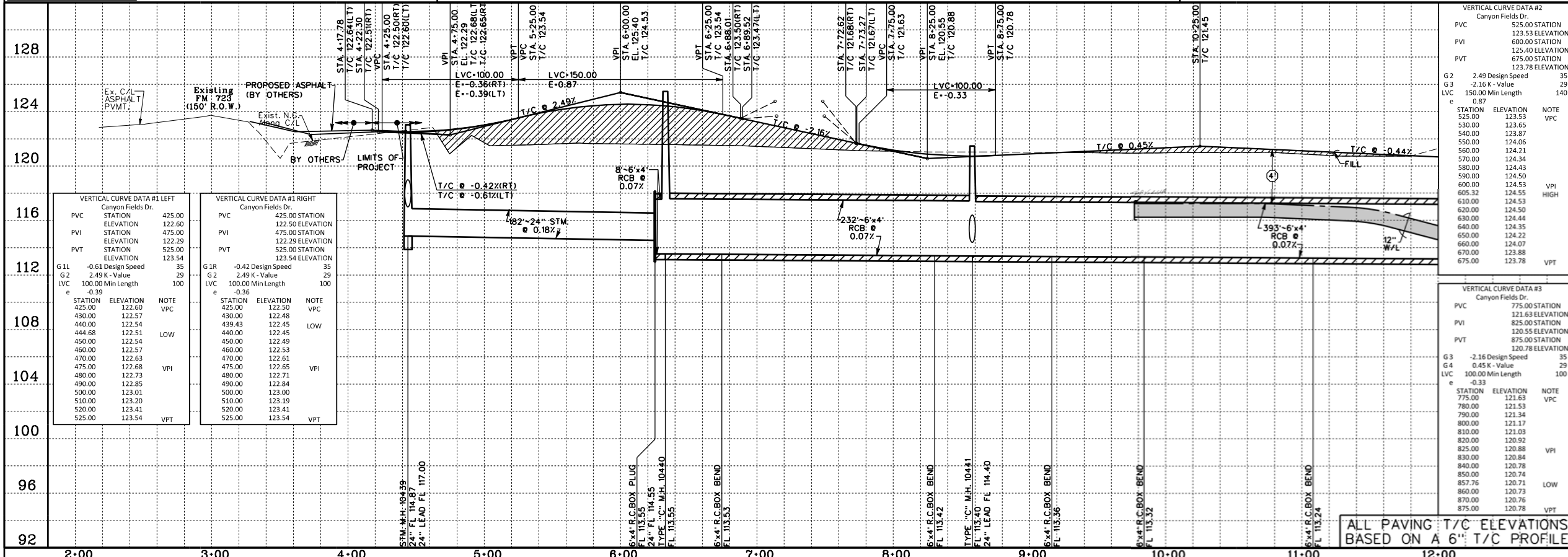
- UNLESS OTHERWISE NOTED, ALL STORM SEWERS AND INLET LEADS WILL BE PROPOSED REINFORCED CONCRETE PIPE (C-76, CL. III) W/PROPOSED TYPE "C" MANHOLES.
- ALL CURB RADI SHALL BE 25' UNLESS OTHERWISE NOTED. MINIMUM SLOPE AROUND CURB RETURN 1.0%.
- EXIST. TEMP. SWALES WITHIN R.O.W. TO BE MUCKED OUT, PROOF ROLLED & FILLED.
- ALL B-B INLETS SHALL BE CONSTRUCTED WITH GRATES.
- ALL TOP OF CURB ELEVATIONS SHOWN ARE BASED ON 6" CURB.

- ① - INDICATES MIN. 1' VERTICAL CLEARANCE
- ② - INDICATES MIN. 2' VERTICAL CLEARANCE
- ④ - INDICATES MIN. 4' VERTICAL CLEARANCE

ALL T/C's IN PLAN VIEW ARE BASED ON 6" CURB

CANYON FIELDS (ROW VARIES)

CONTRACTOR TO FIELD VERIFY LOCATION AND ELEVATION OF EXISTING UTILITIES PRIOR TO STARTING CONSTRUCTION



SCALE: 1" = 40' HORIZ. 1" = 4' VERT.
CL CURVE DATA
<p>C-1</p> <p>P.C. STA. 4+01.92 TO P.T. STA. 6+90.41 Δ = 33° 03' 28" R = 500.00' L = 379.88' CB = S76° 12' 47" E CH = 284.50</p> <p>C-2</p> <p>P.C. STA. 7+99.95 TO P.T. STA. 11+79.83 Δ = 31° 05' 38" R = 700.00' L = 379.88' CB = S75° 12' 47" E CH = 375.24</p>
<p>APPROVED: DEVELOPMENT COORDINATOR</p> <p>DATE: _____</p>
<p>NOTE: CITY SIGNATURES VALID FOR ONE YEAR ONLY AFTER DATE OF SIGNATURES</p>
<p>CITY OF HOUSTON DEPARTMENT OF PUBLIC WORKS AND ENGINEERING</p>
<p>WATER</p> <p>WASTEWATER</p> <p>STORM</p> <p>STREET & BRIDGE</p>
<p>TRAFFIC & TRANSPORTATION</p> <p>STORM WATER QUALITY</p> <p>FACILITIES</p>
<p>FILE NO: _____</p> <p>FOR CITY OF HOUSTON USE ONLY</p>
<p>DRAWING SCALE</p> <p>HORIZ : 1" = 40'</p> <p>VERT : 1" = 4'</p> <p>SHEET No: 8 OF 18</p>

NO.	REVISION	DATE	BY

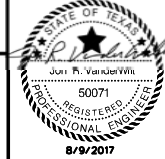
DESIGNED BY: _____
DESIGN CHECKED BY: _____
DRAWN BY: _____
COGO CHECKED BY: _____
SURVEY CHECKED BY: _____
QA/QC BY: _____ DATE: _____
QA/QC REVISIONS BY: _____



Engineering and Surveying
9990 Richmond Avenue, Suite 450 N
Houston, Texas 77042
(713) 783-7788 (713) 783-3580, Fax
TBPE FIRM REG. No. 280
TBPLS FIRM REG. No. 100486

FORT BEND COUNTY MUD 132
CANYON FIELDS DRIVE EXTENSION

CANYON FIELDS DRIVE
(STA. 2+00.00 TO STA. 12+00.00)



WATER, SEWER, DRAINAGE AND PAVING IMPROVEMENTS FOR CANYON FIELDS DRIVE EXTENSION TO FM 723 (JOB NO. 200417-CH43S-101)