

THE STATE OF TEXAS           §  
   §  
COUNTY OF FORT BEND       §

**RESOLUTION AND ORDER DECREERING THE ACQUISITION OF PROPERTY TO  
BE A PUBLIC NECESSITY AND AUTHORIZING THE ACQUISITION AND  
PAYMENT OF COMPENSATION**

**WHEREAS**, on the \_\_\_\_ day of \_\_\_\_\_, 2017, at a regular meeting of the Commissioners Court of Fort Bend County, Texas, sitting as the governing body of Fort Bend County, upon motion of Commissioner \_\_\_\_\_, seconded by Commissioner \_\_\_\_\_, and upon record vote, passed \_\_\_\_ votes in favor and \_\_\_\_ opposed:

**RESOLUTION**

**RESOLVED THAT WHEREAS**, the Commissioners Court has received and reviewed the plans for a public project known as the Crabb River Road/FM 762 – FM 2759 Mobility Project Section One from south of Sansbury Boulevard to FM 762/FM 2759 in Fort Bend County, Texas and Section Two from FM 762/FM 2759 to south of Lamar Consolidated Independent School on FM 762 in Fort Bend County, Texas; and,

**WHEREAS**, Commissioners Court has determined that public necessity and convenience exists for the location, alignment, construction, operation, and maintenance of a public project known Crabb River Road/FM 762 – FM 2759 Mobility Project Section One from south of Sansbury Boulevard to FM 762/FM 2759 in Fort Bend County, Texas and Section Two from FM 762/FM 2759 to south of Lamar Consolidated Independent School on FM 762 in Fort Bend County, Texas, in accordance with said plans, alignment, and/or tract identifications which are part hereof as Exhibit “A.”

**ORDER**

**NOW THEREFORE, IT IS ORDERED AND DECREED** that the plans for the location, alignment, construction, operation, and maintenance of the public project known as Crabb River Road/FM 762 – FM 2759 Mobility Project Section One from south of Sansbury Boulevard to FM 762/FM 2759 in Fort Bend County, Texas and Section Two from FM 762/FM 2759 to south of Lamar Consolidated Independent School on FM 762 in Fort Bend County, Texas, is approved.

**IT IS FURTHER ORDERED AND DECREED** that public necessity and convenience exist for the public project, known as Crabb River Road/FM 762 – FM 2759 Mobility Project Section One from south of Sansbury Boulevard to FM 762/FM 2759 in Fort Bend County, Texas and Section Two from FM 762/FM 2759 to south of Lamar Consolidated Independent School on FM 762 in Fort Bend County, Texas, and that the County Engineer be authorized and directed to obtain appraisals, surveys, title information and/or make official offers of specific amount for the purchase of either easement or the fee simple interest in and to the tract(s) situated within such alignment [as shown as Exhibit “A”]; that the County Attorney be authorized and directed, and he is hereby authorized and directed to file or cause to be filed proceedings in eminent domain and to acquire thereby easement or fee simple interest for said purposes in the tract(s) which cannot be acquired as aforesaid by donation, dedication, or purchase.

**IT IS FURTHER ORDERED AND DECREED** that the County Judge or designated representative be authorized and directed to sign any papers or agreements associated with closing the purchase(s); the County Attorney, County Clerk, County Auditor and County Treasurer be authorized and directed to perform any and all necessary acts within their respective spheres of official duties toward the final acquisition of the tract(s) of land, or interest(s) therein, together with the improvement if any, within the said public project known as Crabb River Road/FM 762 – FM 2759 Mobility Project Section One from south of Sansbury Boulevard to FM 762/FM 2759 in Fort Bend County, Texas and Section Two from FM 762/FM 2759 to south of Lamar Consolidated Independent School on FM 762 in Fort Bend County, Texas and the payment and compensation therefore.

**PASSED AND APPROVED** this \_\_\_\_ day of \_\_\_\_\_, 2017.

**FORT BEND COUNTY**

\_\_\_\_\_  
Robert E. Hebert, County Judge

ATTEST:

\_\_\_\_\_  
Laura Richard, County Clerk

EXHIBIT "A"



**Crabb River Road**  
From Sansbury Blvd to South of LCISD



Google earth

300 ft





# Crabb River Road

From Sansbury Blvd to South of LCISD



Google earth

2007



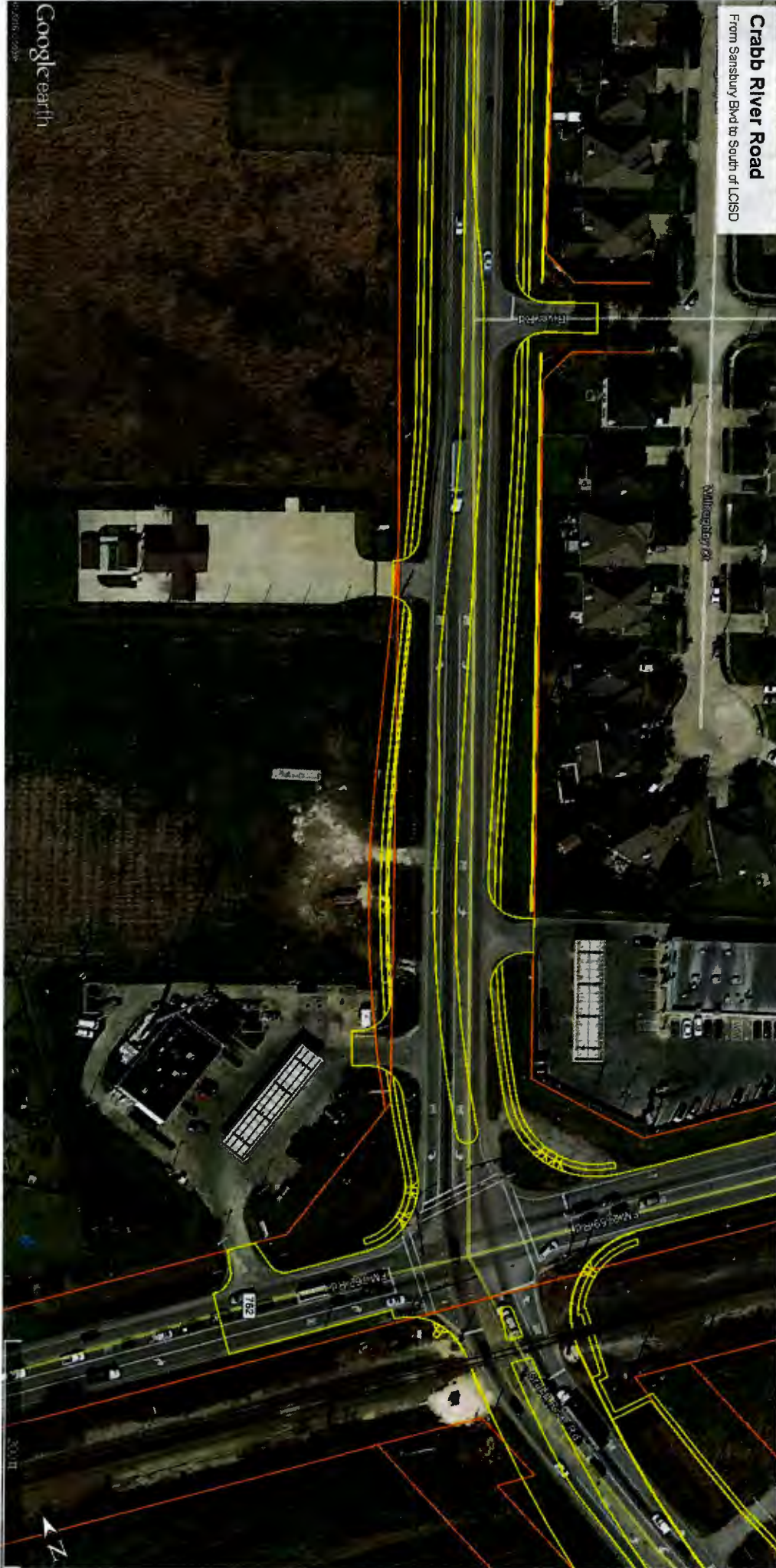
**Crabb River Road**  
From Sansbury Blvd to South of LCISD





# Crabb River Road

From Sansbury Blvd to South of LCSD



# Crabb River Road

From Salisbury Blvd to South of LCSD



Google Earth

200 ft





# Crabb River Road

From Sansbury Blvd to South of LCISD



# Crabb River Road

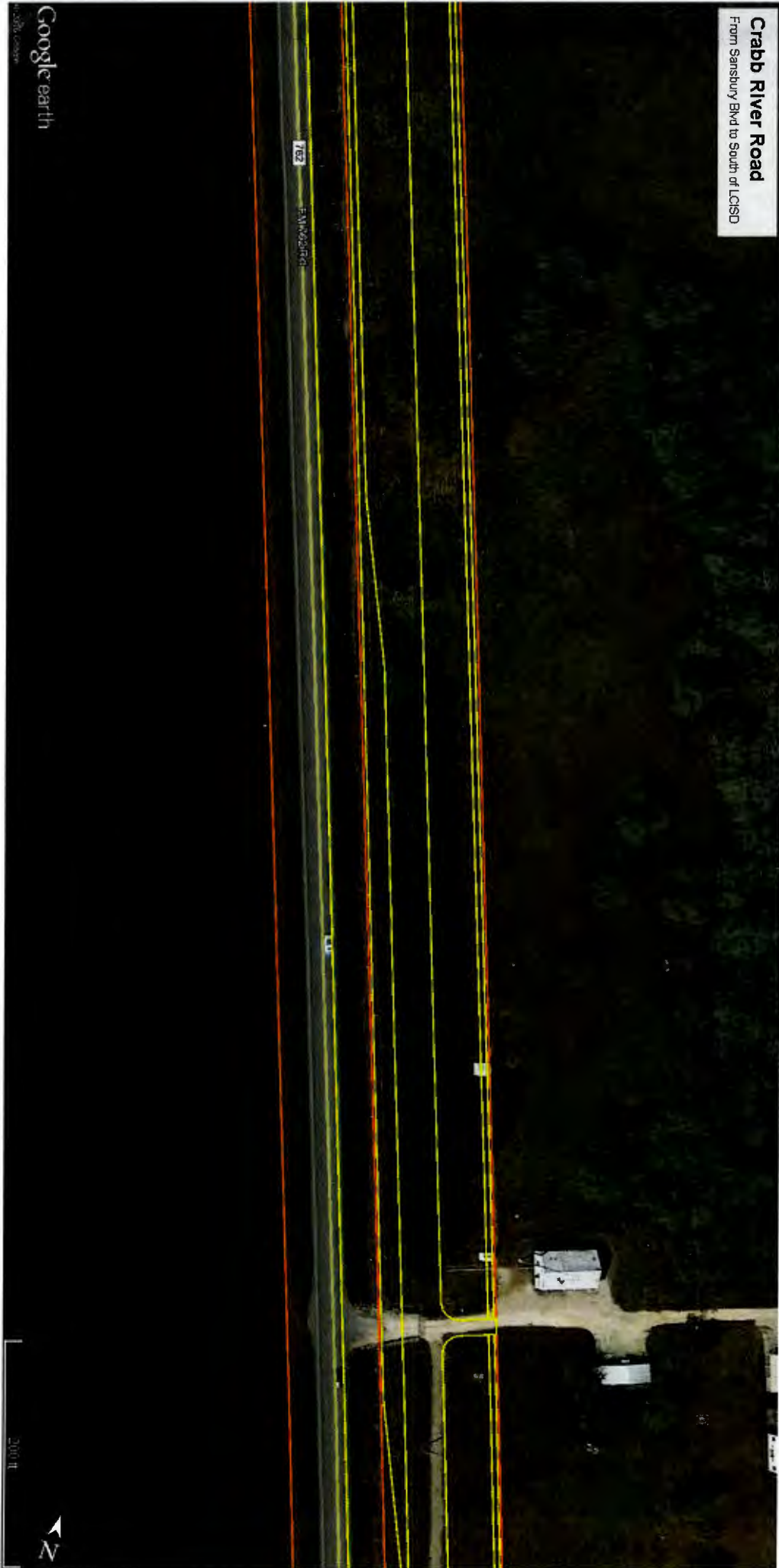
From Sansbury Blvd to South of LCISD





# Crabb River Road

From Sansbury Blvd to South of LCISD



702

Crabb River Road

10

11

12

13

14

Google earth

© 2006 Google

200 ft



# Crabb River Road

From Sansbury Blvd to South of LCSD



Google earth

© 2017 Google

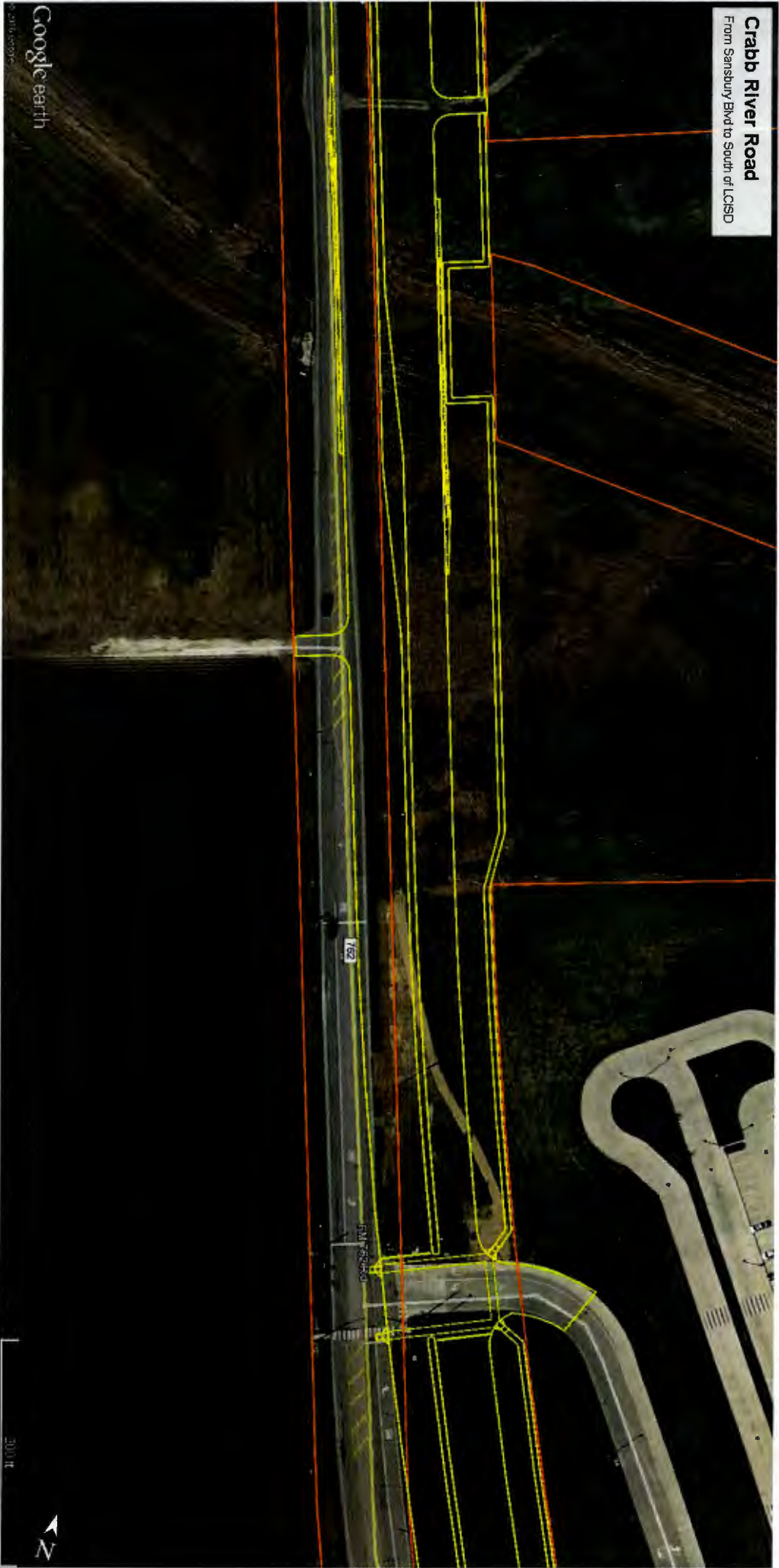
300ft





# Crabb River Road

From Sansbury Blvd to South of LCISD



Google earth

300 ft



# Crabb River Road

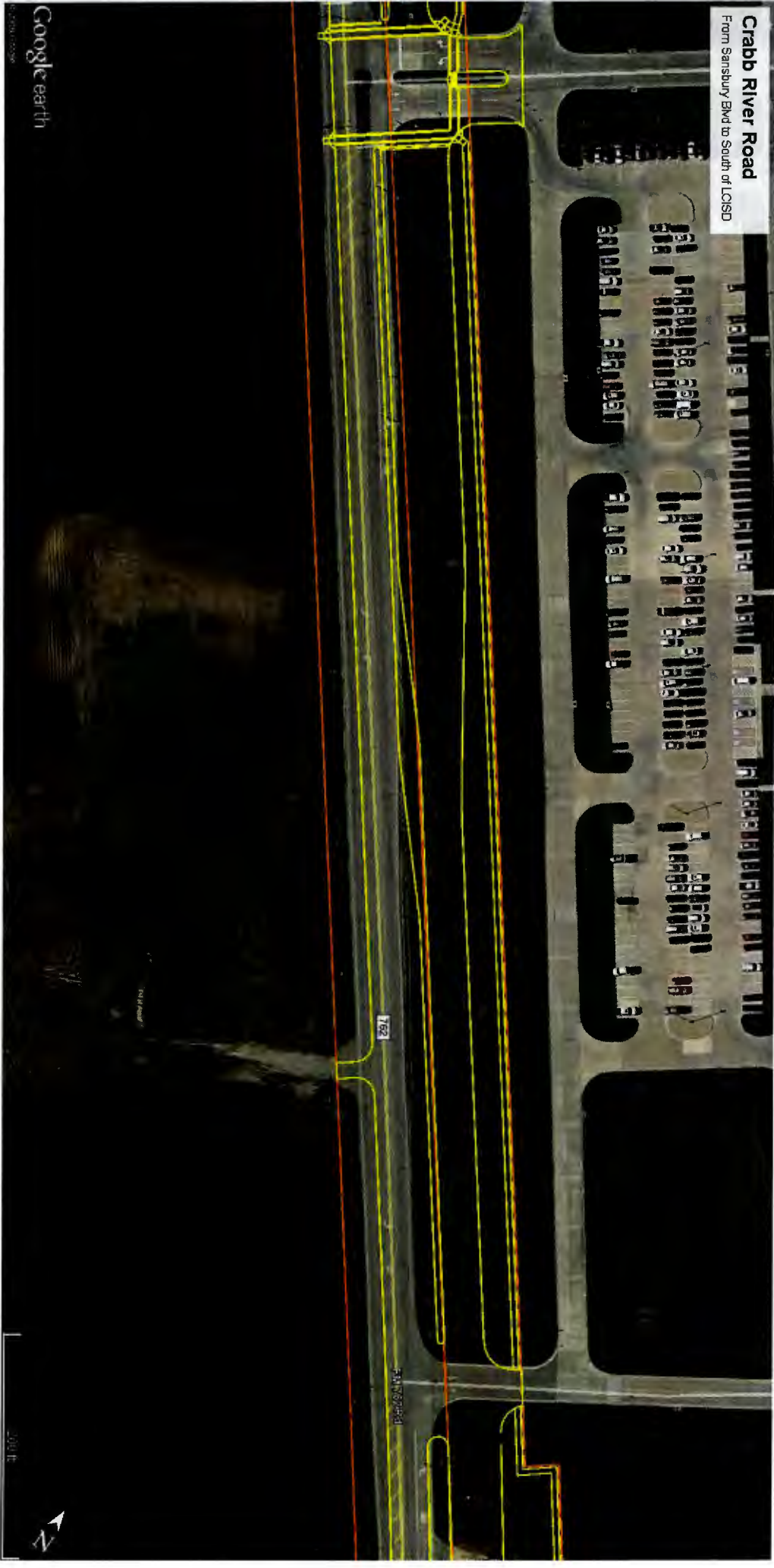
From Sansbury Blvd to South of LCSD





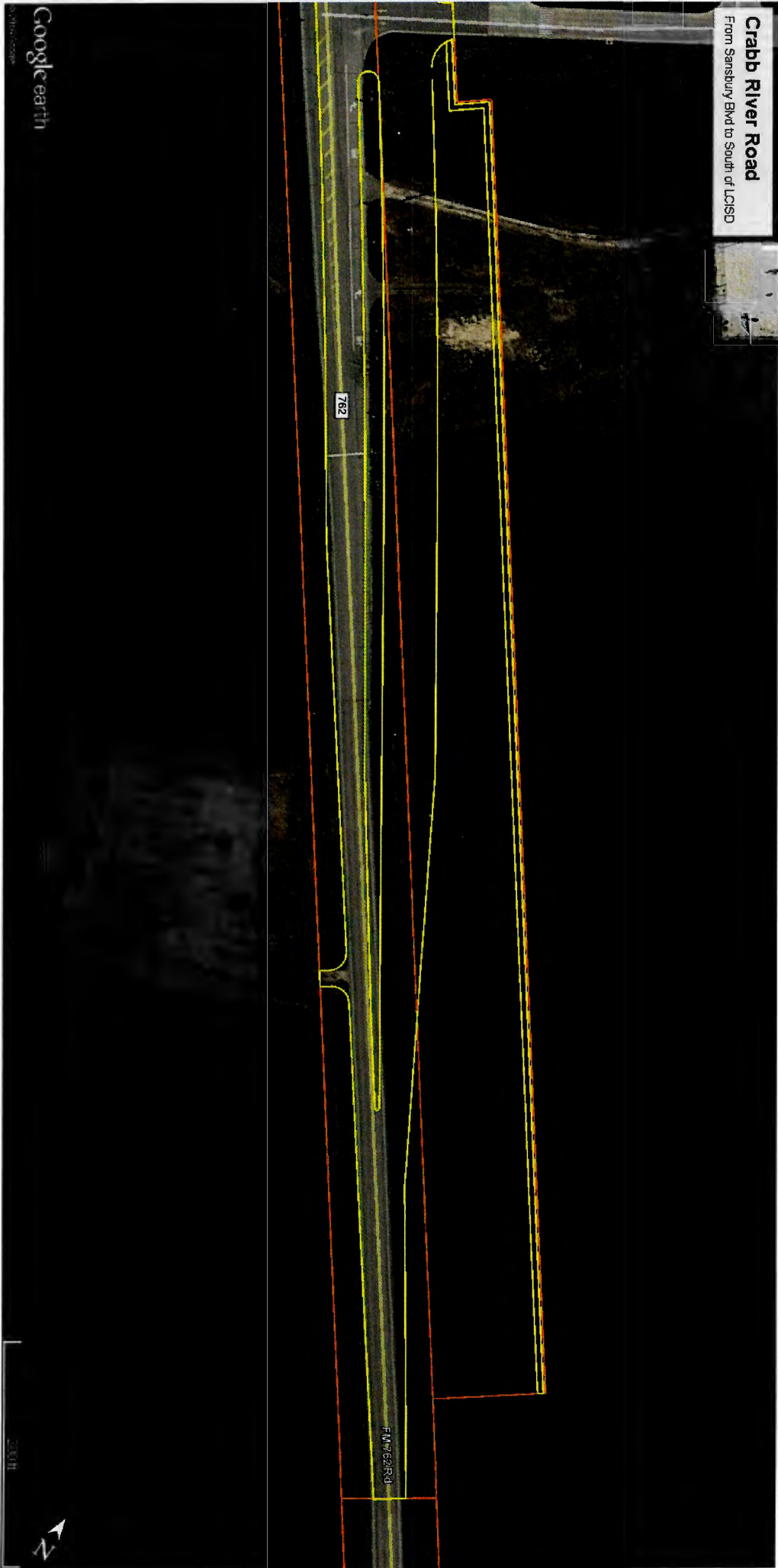
# Crabb River Road

From Sansbury Blvd to South of LCSD



**Crabb River Road**

From Sansbury Blvd to South of LCISD



Google earth

© 2014 Google

2014





# Crabb River Road

From Sansbury Blvd to South of LCISD

F.M. 621 R.D.

782

Google earth

©2011 Google

200 FT

