



Fort Bend County Engineering
FORT BEND COUNTY, TEXAS

Richard W. Stolleis, P.E.
County Engineer

March 20, 2017

Commissioner Vincent M. Morales Jr.
Fort Bend County Precinct 1
1517 Eugene Heimann Circle, Suite 300
Richmond, Texas 77469

**RE: Kingdom Heights, Section 2 - Traffic Control Plan
Kingdom Heights Model Home Lots**

Dear Commissioner:

Fort Bend County Engineering has completed and recommends approval of the traffic control plan for the above referenced subdivision. The public hearing date for acceptance of the plan is being scheduled.

A copy of the traffic control plan is attached for your review. If you should have any questions, please give me a call.

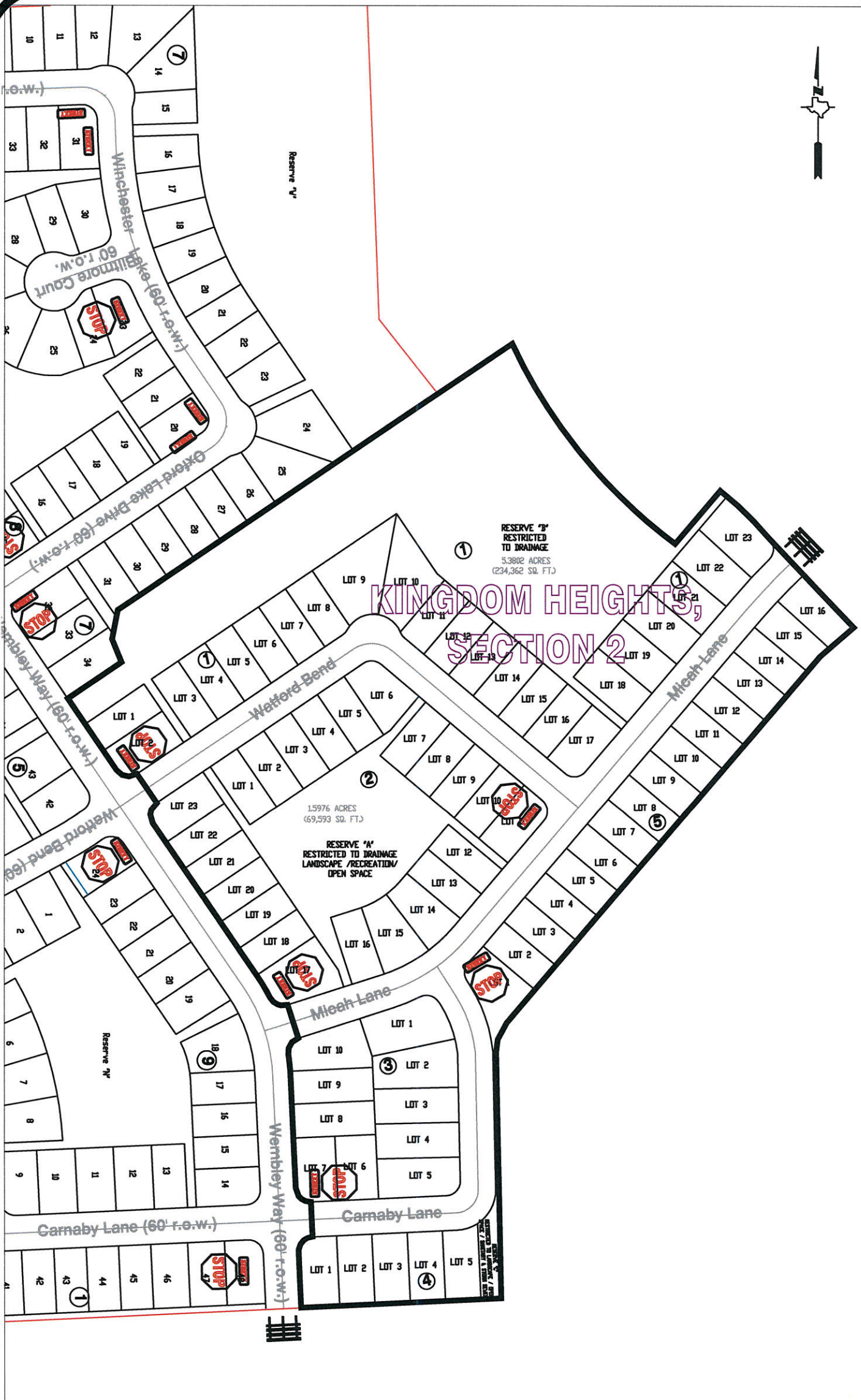
Sincerely,

A handwritten signature in black ink, appearing to read "Chris Debaillon".

Chris Debaillon, PE, PTOE
Assistant County Engineer – Traffic

CD/mjs

cc: Judge Robert E. Hebert, County Judge
Marc Grant - FBC Road & Bridge
Brian Fields - Signage Department
File



A map of Kingdom Heights, Section 2, showing lots 10 through 21. Lot 11 is highlighted in yellow. The map shows a grid of lots with lot numbers 10, 11, 12, 13, 14, 15, 16, 17, 18, 19, 20, and 21. Lot 11 is highlighted in yellow. The map also shows the boundaries of the section and the location of the section relative to the surrounding area.

**RESERVE 'B'
RESTRICTED
TO DRAINAGE**
5.3802 ACRES
(234,362 SQ. FT.)

1.5976 ACRES
(69,593 SQ. FT.)

RESERVE 'A'
RESTRICTED TO DRAINAGE
LANDSCAPE /RECREATION/
OPEN SPACE

~~Micah Lane~~

~~Carnaby Lane~~

Note:

The purpose of this traffic control plan is to establish traffic control for Kingdom Heights, Section 2.

Drawn By: L. Brdecka

Date: 3-20-17

Approved By: Chris Debaillon, PE PTOE

Date: 3/20/17

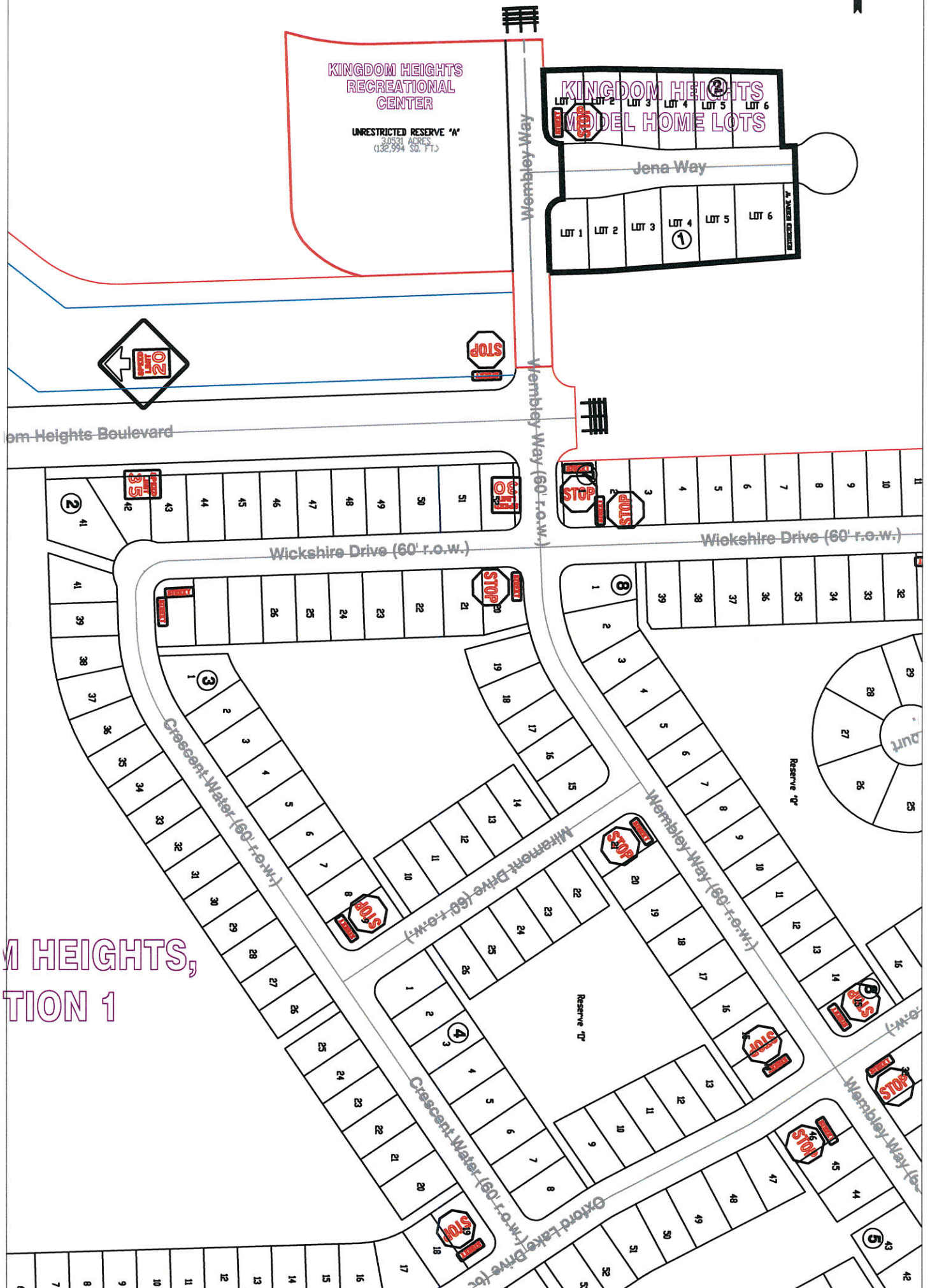
Scale

$$1'' = 200'-0''$$

Kingdom Heights,
Section 2

Control Map and Traffic Sign Layout

Fort Bend County Engineering Dept.
301 Jackson Street
Richmond, Texas 77469



KINGDOM HEIGHTS,
SECTION 1

Note:

The purpose of this traffic control plan is to establish traffic control for Kingdom Heights Model Home Lots.

Drawn By: L. Brdecka

Date: 3-20-17

Approved By: Chris Debaillon, PE PTOE

Date: 3/20/17

Scale

1" = 200'-0"

Kingdom Heights
Model Home Lots
Control Map and Traffic Sign
Layout

Fort Bend County Engineering Dept.
301 Jackson Street
Richmond, Texas 77469