



Fort Bend County Engineering  
FORT BEND COUNTY, TEXAS

Richard W. Stolleis, P.E.  
County Engineer

April 3, 2017

Commissioner Vincent M. Morales, Jr.  
Fort Bend County Precinct 1  
1517 Eugene Heimann Circle  
Richmond, TX 77469

**RE: Sansbury Boulevard at Grand Estates Drive, Stop Signs**

Dear Commissioner Morales:

As requested, Fort Bend County Engineering Department has reviewed the conditions at the intersection of Sansbury Boulevard at Grand Estates Drive. Currently, Sansbury Boulevard, identified as a Major Thoroughfare on the 2015 Fort Bend County Major Thoroughfare Plan, tees into Grand Estates Drive from the east.

The single westbound Sansbury Boulevard approach is stop controlled while Grand Estates Drive is free. However, when Sansbury Boulevard is extended to the west, it is anticipated that this condition will be reversed, as Sansbury Boulevard is the Major Thoroughfare. In similar situations where a Major Thoroughfare will be extended in the future, Engineering is recommending that the cross street be stop controlled so that drivers will not have to adjust when the thoroughfare is extended and presumably carrying more traffic.

Engineering has completed the traffic control plan to place Stop signs on Grand Estates Drive while removing the Stop signs on Sansbury Drive, as shown on the traffic control plan attached for your review. The public hearing date for acceptance for the plan will be scheduled on the next available Commissioner's Court Agenda.

If we can be of further assistance please do not hesitate to contact me at 281-633-7528 or [chris.debaillon@fortbendcountytexas.gov](mailto:chris.debaillon@fortbendcountytexas.gov)

Sincerely,

A handwritten signature in blue ink, appearing to read "Chris Debaillon".

Chris Debaillon, PE, PTOE  
Assistant County Engineer - Traffic

cc: Judge Robert E. Hebert, County Judge  
Marc Grant - FBC Road & Bridge  
Brian Fields - Signage Department  
File

301 Jackson St., Suite 401, Richmond, TX 77469  
Phone 281-633-7500

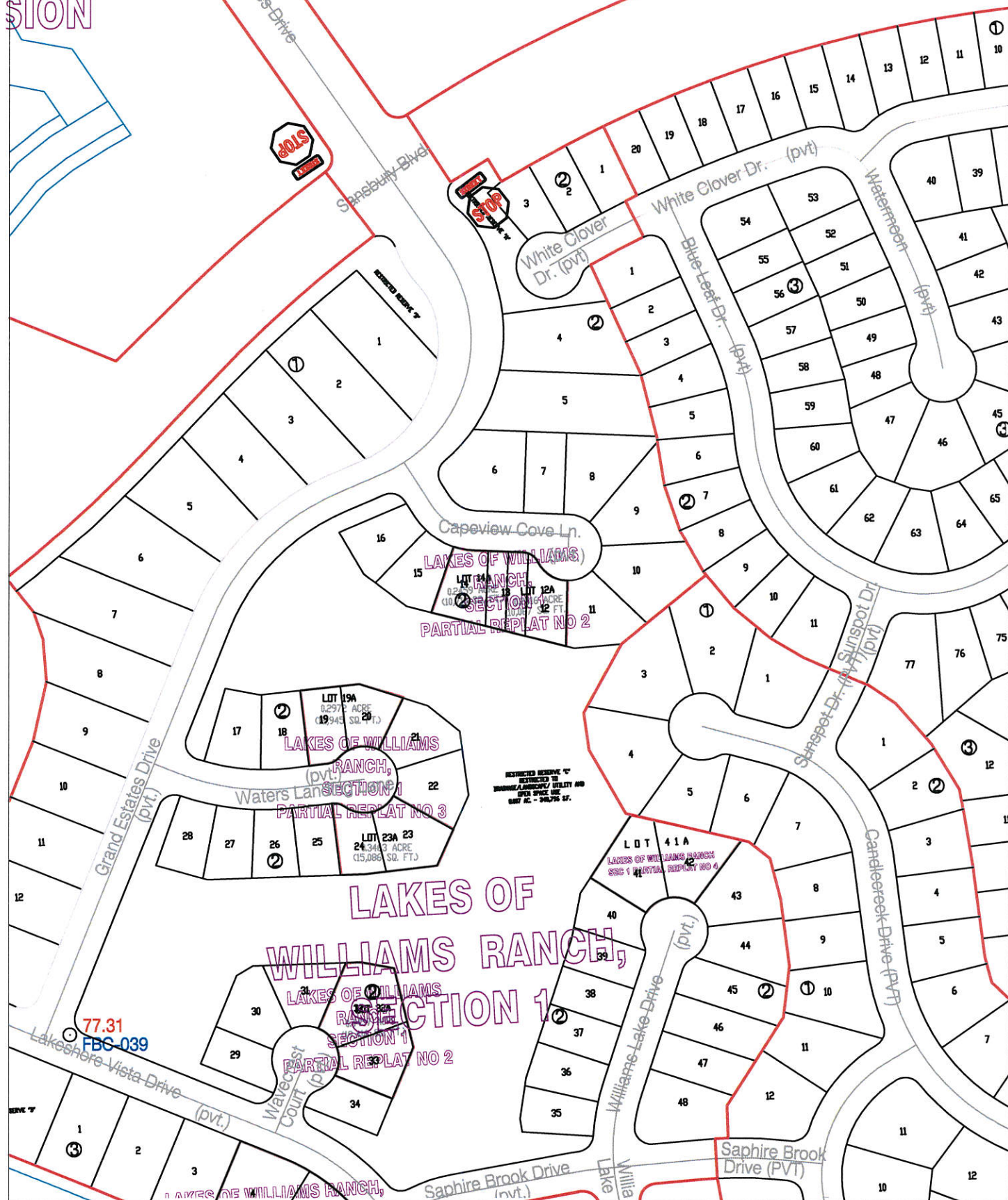
U.S. Hwy. 59 (Southwest Freeway)

RESTRICTED RESERVE "A"  
17.3512 AC. / 755,820 SQ. FT.  
RESTRICTED TO COMMERCIAL USES



# CARMAX ALATTAR

CAL  
SION



## Note:

The purpose of this traffic control plan is to revise traffic control for Grand Estates Drive at Sansbury Boulevard with the addition of "Stop" (R1-1) signs as indicated on the drawing.

Drawn By: L. Brdecka  
Date: 3-31-17

Approved By: Chris Deballon, PE PTOE  
Date: 4/3/17

Scale:  
1" = 200'-0"

Lakes of Williams Ranch  
(Revised) Control Map and  
Traffic Sign Layout

Fort Bend County Engineering Dept.  
301 Jackson Street  
Richmond, Texas 77469