



Fort Bend County Engineering  
FORT BEND COUNTY, TEXAS

Richard W. Stolleis, P.E.  
County Engineer

January 17, 2017

Commissioner W. A. "Andy" Meyers  
Fort Bend County Precinct 3  
22333 Grand Corner Drive  
Katy, Texas 77494

**RE: Bellaire Boulevard at Lakemont Bend Lane – Multi-Way Stop Control**

Dear Commissioner Meyers:

The Fort Bend County Engineering Department has completed a review of the operational conditions at the intersection of Bellaire Boulevard at Lakemont Bend Lane in response to a request for multi-way stop control. The posted speed limit on Bellaire Boulevard is 35 mph. The intersection currently operates with stop control on Bellaire Boulevard. Bellaire Boulevard is identified as a Major Thoroughfare and Lakemont Bend Lane is identified as a Collector in the 2015 Fort Bend County Major Thoroughfare Plan.

Traffic counts were collected and used to evaluate the intersection for multi-way stop control based on the warrants specified in the Texas Manual on Uniform Traffic Control Devices. Based on the data collected, traffic volumes warrant multi-way stop control at the intersection. The updated traffic control plan is attached.

Based on the above results, Engineering recommends the conversion of the intersection to multi-way stop control. If you have any questions please do not hesitate to contact me at 281-633-7528 or [chris.debaillon@fortbendcountytexas.gov](mailto:chris.debaillon@fortbendcountytexas.gov).

Regards,

A handwritten signature in blue ink, appearing to read "Chris Debaillon".

Chris Debaillon, PE, PTOE  
Assistant County Engineer – Traffic

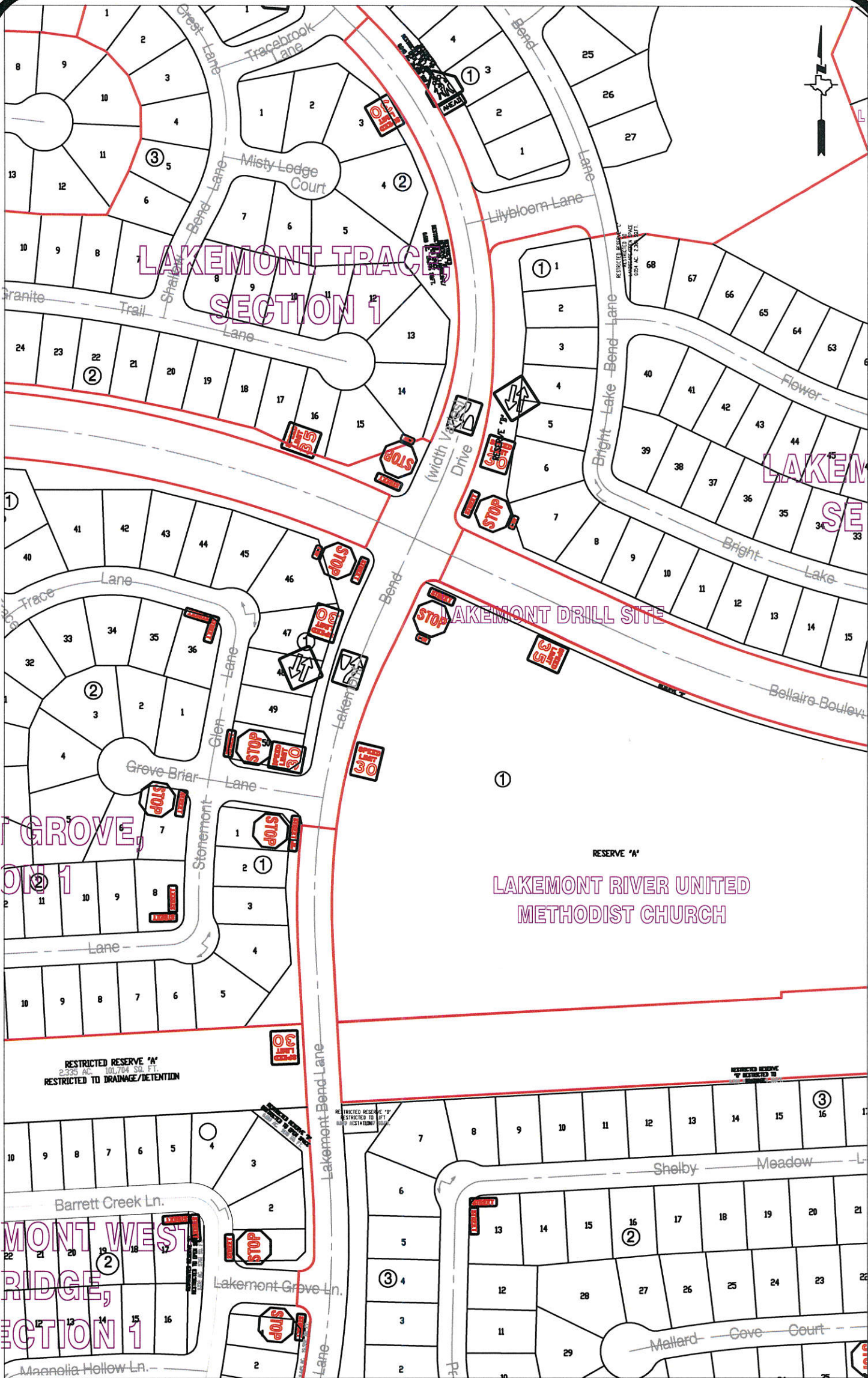
CD/mjs

cc: Judge Robert E. Hebert, County Judge  
Marc Grant - FBC Road & Bridge  
Brian Fields - Signage Department  
File

Attachments

301 Jackson St., 4<sup>th</sup> Floor | Richmond, TX 77469  
Phone 281-633-7500





**Note:**

The purpose of this traffic control plan is to revise traffic control for the intersection of Lakemont Lake Bend Lane at Bellaire Boulevard.

Drawn By: L. Brdecka

Date: 1-17-17

Approved By: Chris Deballion, PE PTOE

Date: 1/17/17

Scale

1" = 200'-0"

Lakemont Lake Bend Lane at  
Bellaire Boulevard  
(Revised) Control Map  
and  
Traffic Sign Layout

Fort Bend County Engineering Dept.  
301 Jackson Street  
Richmond, Texas 77469