



Fort Bend County Engineering  
FORT BEND COUNTY, TEXAS

Richard W. Stolleis, P.E.  
County Engineer

October 21, 2016

Commissioner James Patterson  
Fort Bend County Precinct 4  
12919 Dairy Ashford Road, Ste.200  
Sugar Land, TX 77478

**RE: Long Meadow Farms, Section 41 - Traffic Control Plan  
Long Meadow Farms, Section 42**

Dear Commissioner:

The Construction Completion letter was issued on October 20, 2016, which started the one year maintenance period. Fort Bend County Engineering has completed and recommends approval of the traffic control plan for the above referenced subdivision. The public hearing date for acceptance of the plan is being scheduled.

A copy of the traffic control plan is attached for your review. If you should have any questions, please give me a call.

Sincerely,

A handwritten signature in blue ink, appearing to read "Chris Debaillon".

Chris Debaillon, PE, PTOE  
Assistant County Engineer – Traffic

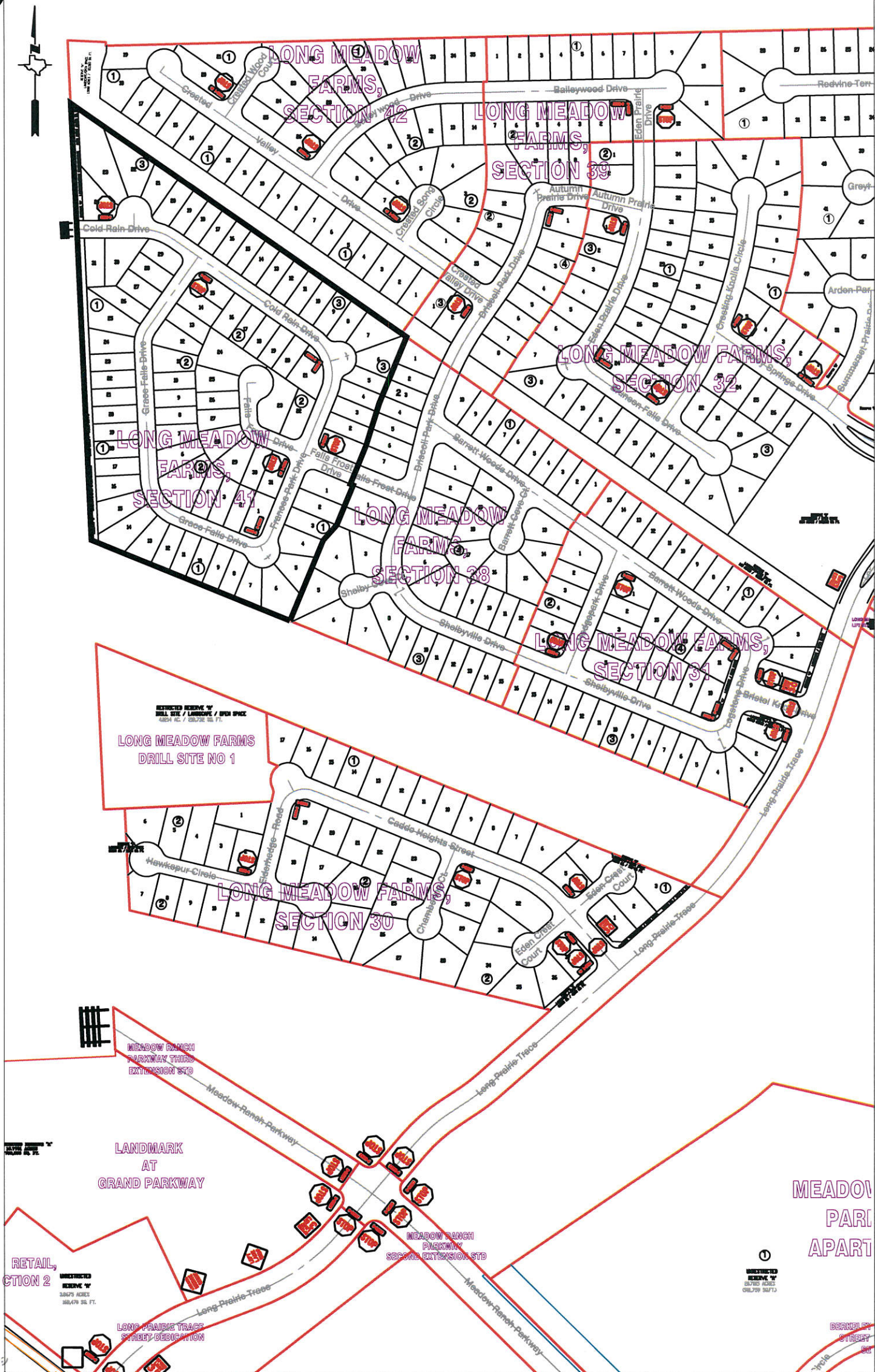
CD/bh

cc: Judge Robert E. Hebert, County Judge  
Marc Grant - FBC Road & Bridge  
Brian Fields - Signage Department  
File









**Note:**

The purpose of this traffic control plan is to establish traffic control for Long Meadow Farms, Section 41.

Drawn By: L. Brdecka

Date: 10-24-16

Approved By: Chris Deballion, PE PTOE

Date: 10/24/16

Scale  
1" = 200'-0"

**Long Meadow Farms,  
Section 41  
Control Map and  
Traffic Sign Layout**

Fort Bend County Engineering Dept.  
301 Jackson Street  
Richmond, Texas 77469