


REVIEW BY FORT BEND COUNTY COMMISSIONERS COURT

On this 1st day of November, 2016, Commissioners Court came on to be heard and reviewed the accompanying notice of Phonoscope Light Wave, Inc Job Location W Belfort Ave, Sugar Land, TX 77083 Date 4/6/2004 Bond No. 103827669, Permit No. 2016-10130 to make use of certain Fort Bend County property subject to, "A Revised Order Regulating the Laying, Construction, Maintenance, and Repair of Buried Cables, Conduits, and Pole Lines, In, Under, Across or Along Roads, Streets, Highways, and Drainage Ditches in Fort Bend County, Texas, Under the Jurisdiction of the Commissioners Court of Fort Bend County, Texas," as passed by the Commissioners Court of Fort Bend County, Texas the 3rd day of August, 1987, recorded in Volume _____ of the Minutes of the Commissioners Court of Fort Bend County, Texas, to the extent that such order is not inconsistent with Article 1436a, Vernon's Texas Civil Statutes. Upon Motion of Commissioner _____, seconded by Commissioner _____, duly put and carried, it is ORDERED, ADJUDGED AND DECREED that said notice of said above purpose is hereby acknowledged by the Commissioners Court of Fort Bend County, Texas, and that said notice be placed on record according to the regulation order thereof.

Notes:

1. Evidence of review by the Commissioners Court must be kept on the job site and failure to do so constitutes grounds for job shutdown.
2. Written notices are required:
 - a. 48 hours in advance of construction start up, and
 - b. when construction is completed and ready for final inspection
 Mail notices to: Permit Administrator
 Fort Bend County Engineering
 301 Jackson Street
 Richmond, Texas 77469
 281-633-7500
3. This permit expires one (1) year from date of permit if construction has not commenced.

By: for  _____
County Engineer

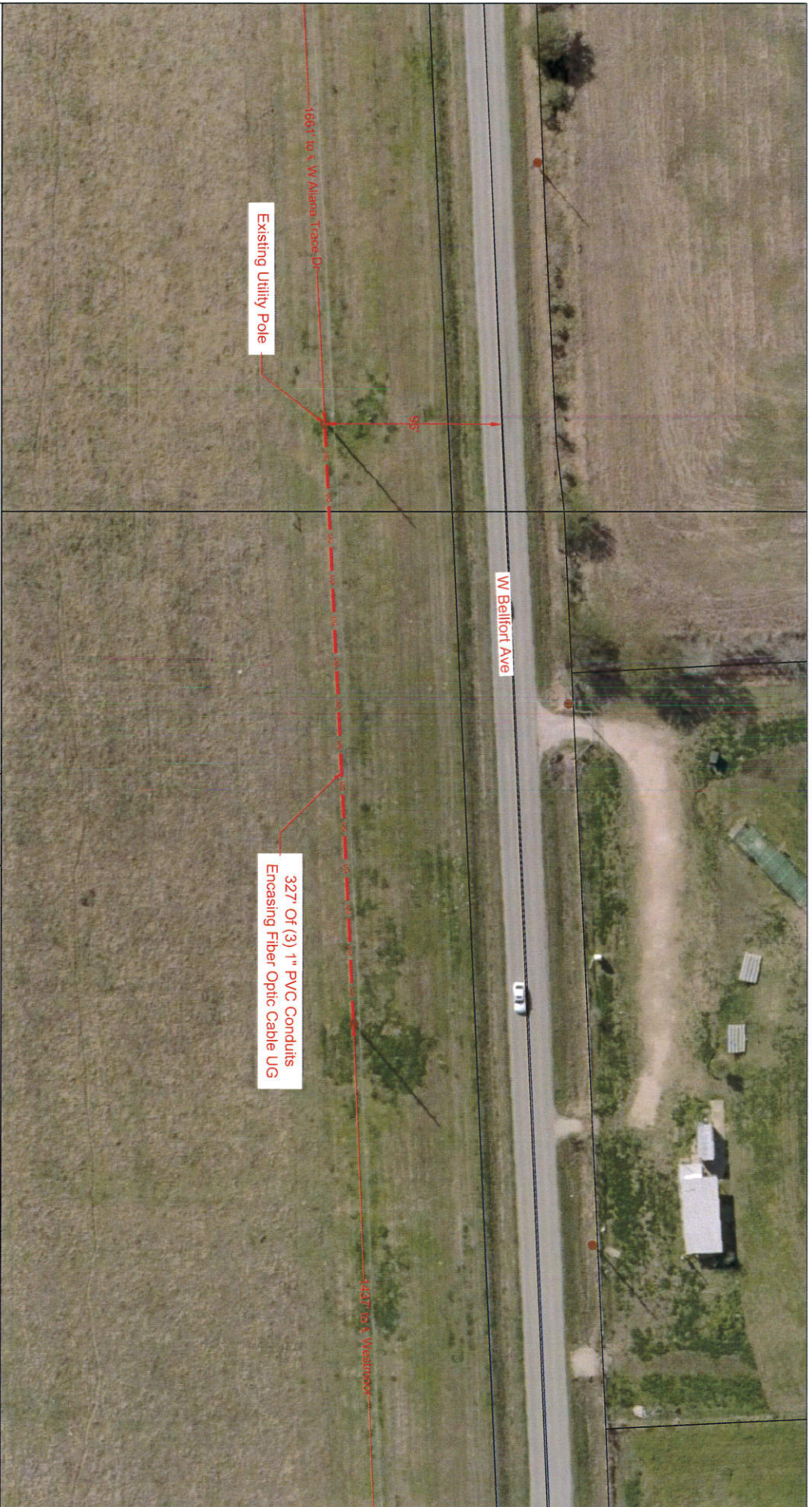
Presented to Commissioners Court and approved.
Recorded in Volume _____

Minutes of Commissioners Court

By: N/A _____
Drainage District Engineer/Manager

Clerk of Commissioners Court

By: _____
Deputy

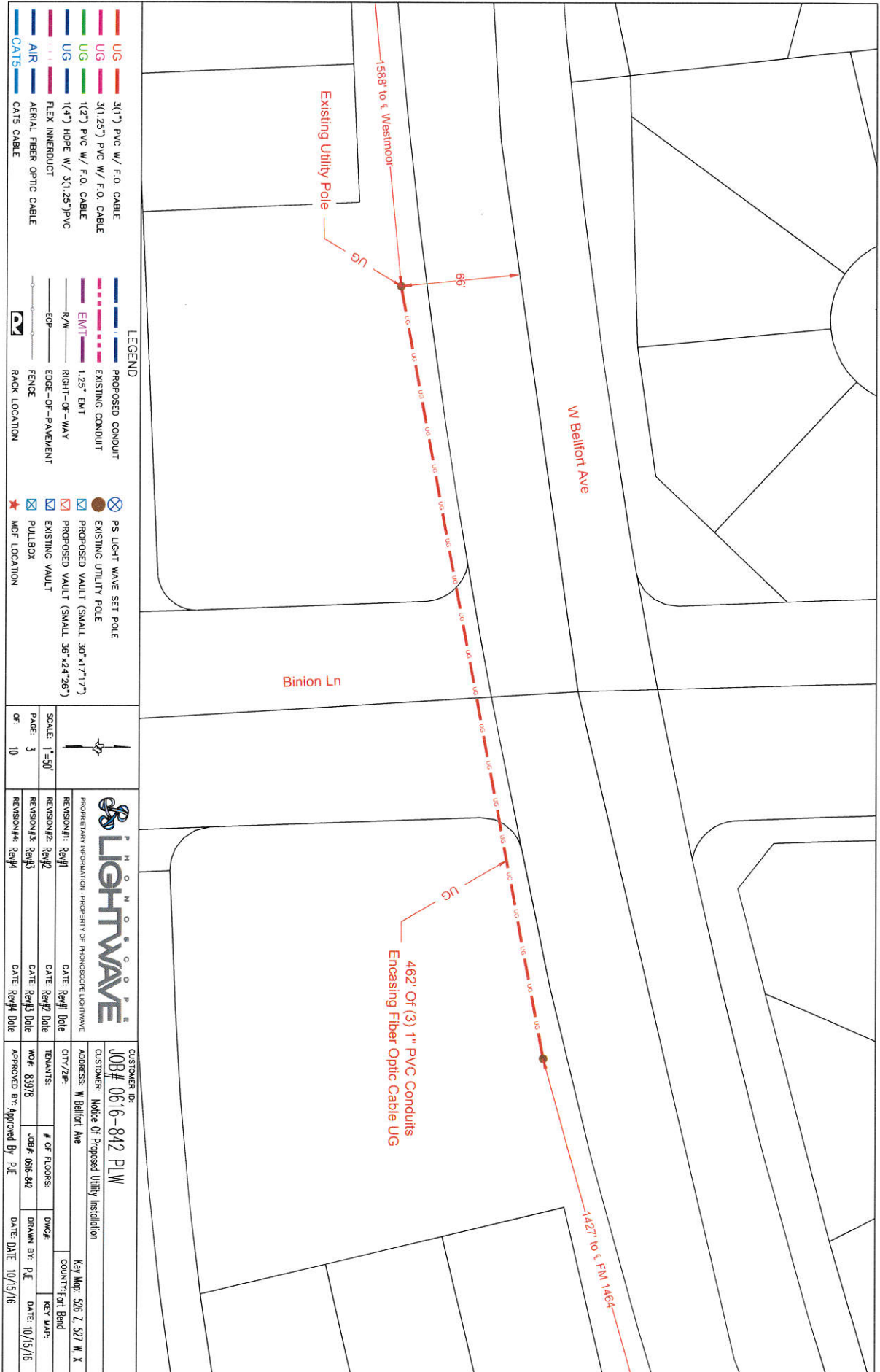


LEGEND	
	3(1") PVC W/ F.O. CABLE
	3(1.25") PVC W/ F.O. CABLE
	1(2") PVC W/ F.O. CABLE
	1(4") HDPE W/ 3(1.25")PVC
	FLEX INNERDUCT
	AIR
	AERIAL FIBER OPTIC CABLE
	CATS
	CATS CABLE
	PROPOSED CONDUIT
	EXISTING CONDUIT
	EMT
	1.25" EMT
	R/W
	EDGE-OF-WAY
	EDGE-OF-PAVEMENT
	FENCE
	RACK LOCATION
	PS LIGHT WAVE SET POLE
	EXISTING UTILITY POLE
	PROPOSED VAULT (SMALL 30"x17"x17")
	PROPOSED VAULT (SMALL 36"x24"x26")
	EXISTING VAULT
	PULLBOX
	MDF LOCATION

SCALE: 1"=50'
 PAGE: 2
 OF: 10

PROPRIETARY INFORMATION - PROPERTY OF PHOENIX LIGHTWAVE	
REVISION#1: Rev#1	DATE: Rev#1 Date
REVISION#2: Rev#2	DATE: Rev#2 Date
REVISION#3: Rev#3	DATE: Rev#3 Date
REVISION#4: Rev#4	DATE: Rev#4 Date

CUSTOMER ID:		JOB# 0616-842 PLW	
ADDRESS: W Bellfort Ave		CITY/ZIP:	
TELEPHONE:		COUNTY: Fort Bend	
DATE: 10/15/16		DATE: 10/15/16	



- UG 3(1") PVC W/ F.O. CABLE
- UG 3(1.25") PVC W/ F.O. CABLE
- UG 1(2") PVC W/ F.O. CABLE
- UG 1(4") HDPE W/ 3(1.25")PVC
- AIR FLEX INNERBUILT
- AIR AERIAL FIBER OPTIC CABLE
- CATS CATS CABLE

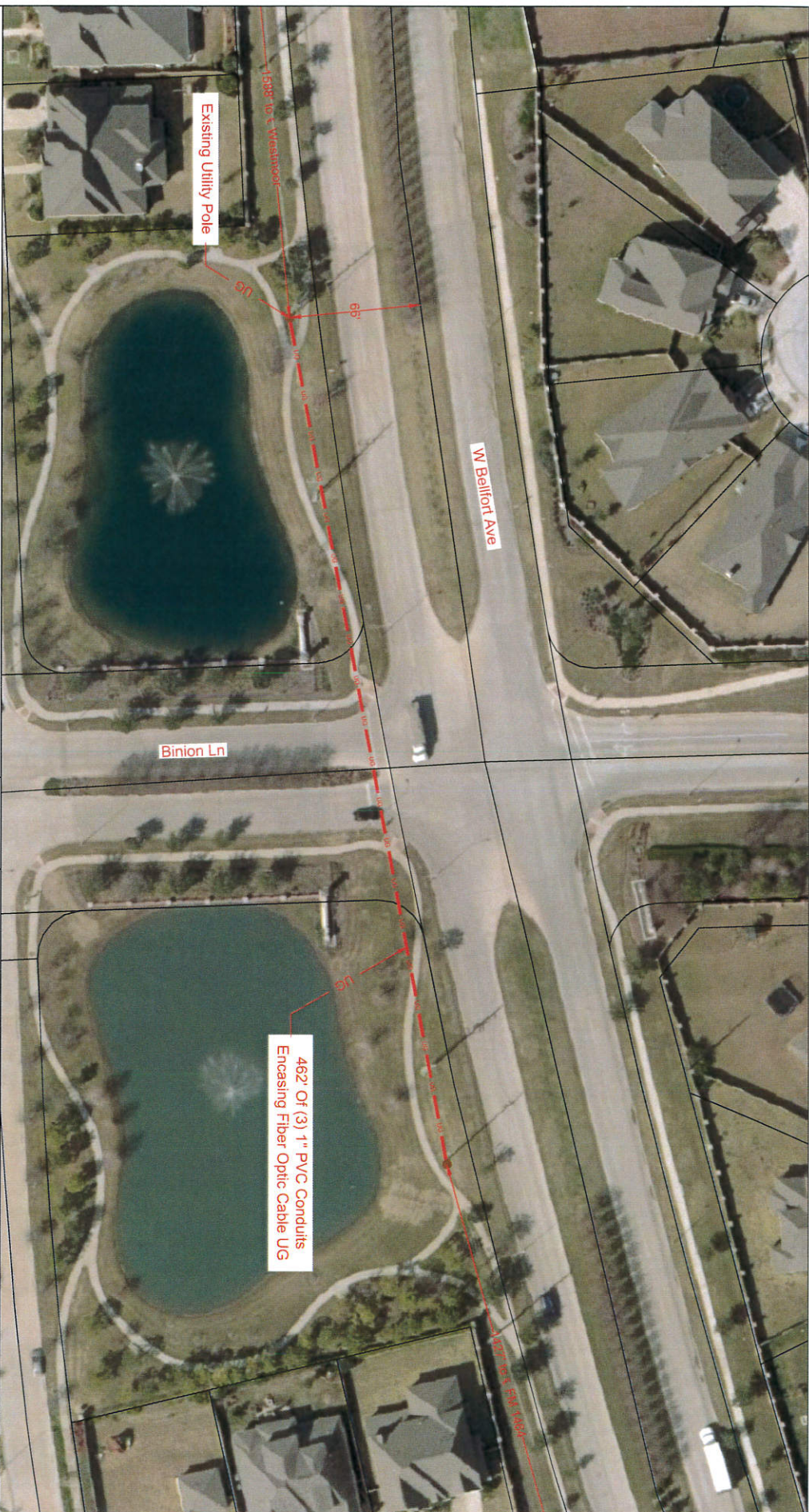
- PROPOSED CONDUIT
- EXISTING CONDUIT
- EMT 1.25" EMT
- RIGHT-OF-WAY
- EDGE-OF-PAVEMENT
- FENCE
- RACK LOCATION
- PS LIGHT WAVE SET POLE
- EXISTING UTILITY POLE
- PROPOSED VAULT (SMALL 30"x17"x7")
- PROPOSED VAULT (SMALL 36"x24"x6")
- EXISTING VAULT
- PULLBOX
- MDF LOCATION



PROPOSED INFORMATION - PROPERTY OF PHONOSCOPE LIGHTWAVE	
REVISION#1: Rev#1	DATE: Rev#1 Date
REVISION#2: Rev#2	DATE: Rev#2 Date
REVISION#3: Rev#3	DATE: Rev#3 Date
REVISION#4: Rev#4	DATE: Rev#4 Date

CUSTOMER ID: JOB# 0616-842 PLW	
CUSTOMER:	Notice Of Proposed Utility Installation
ADDRESS:	W Balford Ave
CITY/ZIP:	
TENANTS:	
WO#:	81918
APPROVED BY:	Approved By P.E.
DATE:	10/15/16
KEY MAP:	Key Map: 5/6 2, 5/7 W, X
DATE:	10/15/16

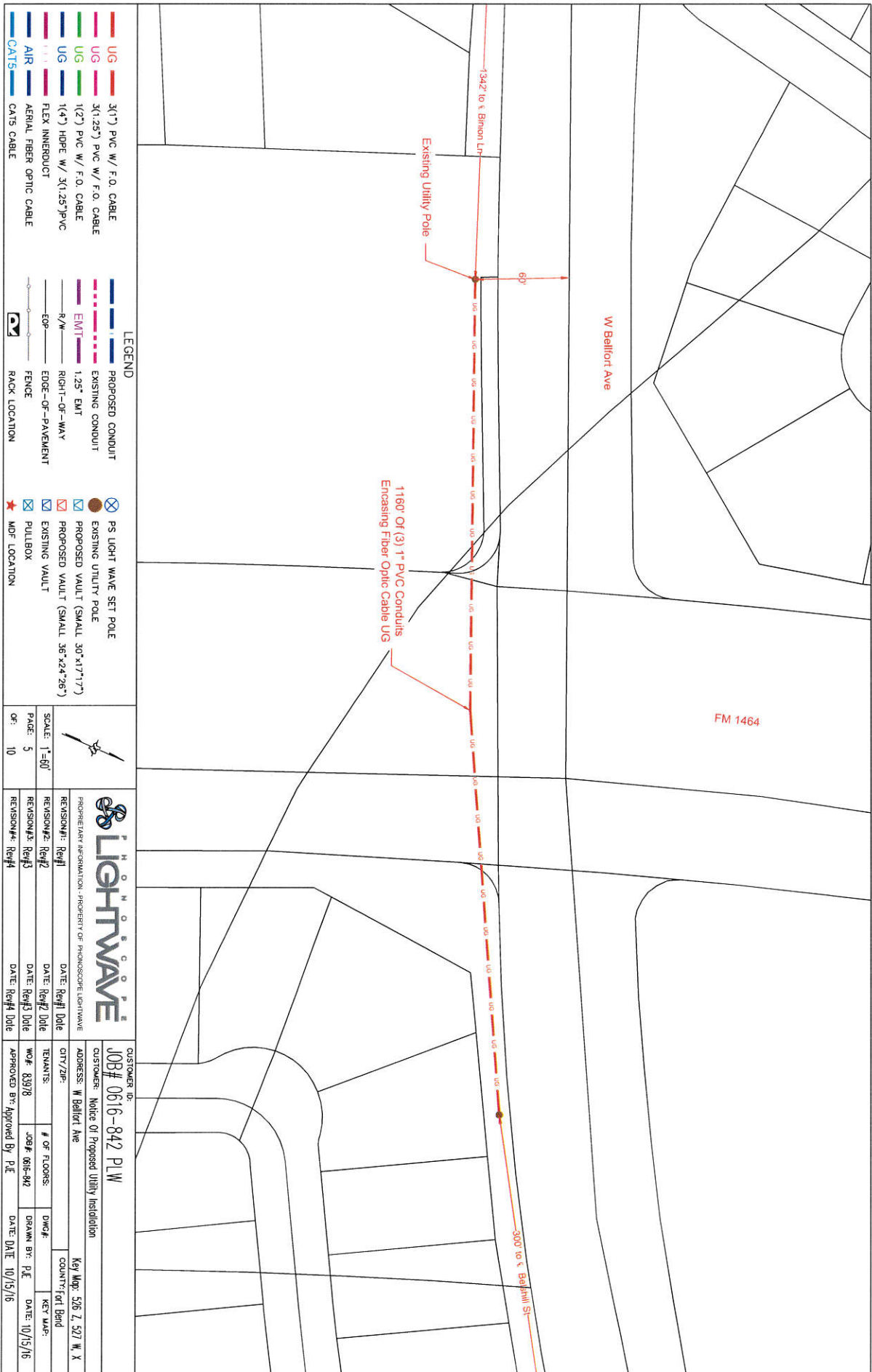
SCALE: 1"=50'
 PAGE: 3
 OF: 10



LEGEND

	3(1") PVC W/ F.O. CABLE		PROPOSED CONDUIT
	UG 3(1.25") PVC W/ F.O. CABLE		EXISTING CONDUIT
	UG 1(2") PVC W/ F.O. CABLE		1.25" EMT
	UG 1(4") HOPE W/ 3(1.25") PVC		R/W
	UG FLEX INNERDUCT		EDGE-OF-PAVEMENT
	AIR AERIAL FIBER OPTIC CABLE		FENCE
	CATS CATS CABLE		RACK LOCATION

		CUSTOMER ID:	JOB# 0616-842 PLW
SCALE: 1"=30'	PROJECTIONS INFORMATION: PROPERTY OF PHONOSCOPE LIGHTWAVE	CUSTOMER:	Notice Of Proposed Utility Installation
PAGE: 4	REVISION#1: Rev#1	ADDRESS:	W Balfour Ave
OF: 10	REVISION#2: Rev#2	CITY/ZIP:	
	REVISION#3: Rev#3	TELEPHONE:	
	REVISION#4: Rev#4	WO# 83978	JOB# 0616-842
		APPROVED BY: P.E.	DATE: 10/15/16
			DATE: 10/15/16



- UG 3(1") PVC W/ F.O. CABLE
- UG 3(1.25") PVC W/ F.O. CABLE
- UG 1(2") PVC W/ F.O. CABLE
- UG 1(4") HDPE W/ 3(1.25") PVC
- AIR FLEX INNERDUCT
- AIR AERIAL FIBER OPTIC CABLE
- CATS CATS CABLE

- LEGEND**
- PROPOSED CONDUIT
 - EXISTING CONDUIT
 - EMT 1.25" EMT
 - R/W RIGHT-OF-WAY
 - EDGE-OF-PAVEMENT
 - FENCE
 - RACK LOCATION
 - PS LIGHT WAVE SET POLE
 - EXISTING UTILITY POLE
 - PROPOSED VAULT (SMALL 30"x17"x7")
 - PROPOSED VAULT (SMALL 36"x24"x6")
 - EXISTING VAULT
 - PULLBOX
 - MDF LOCATION

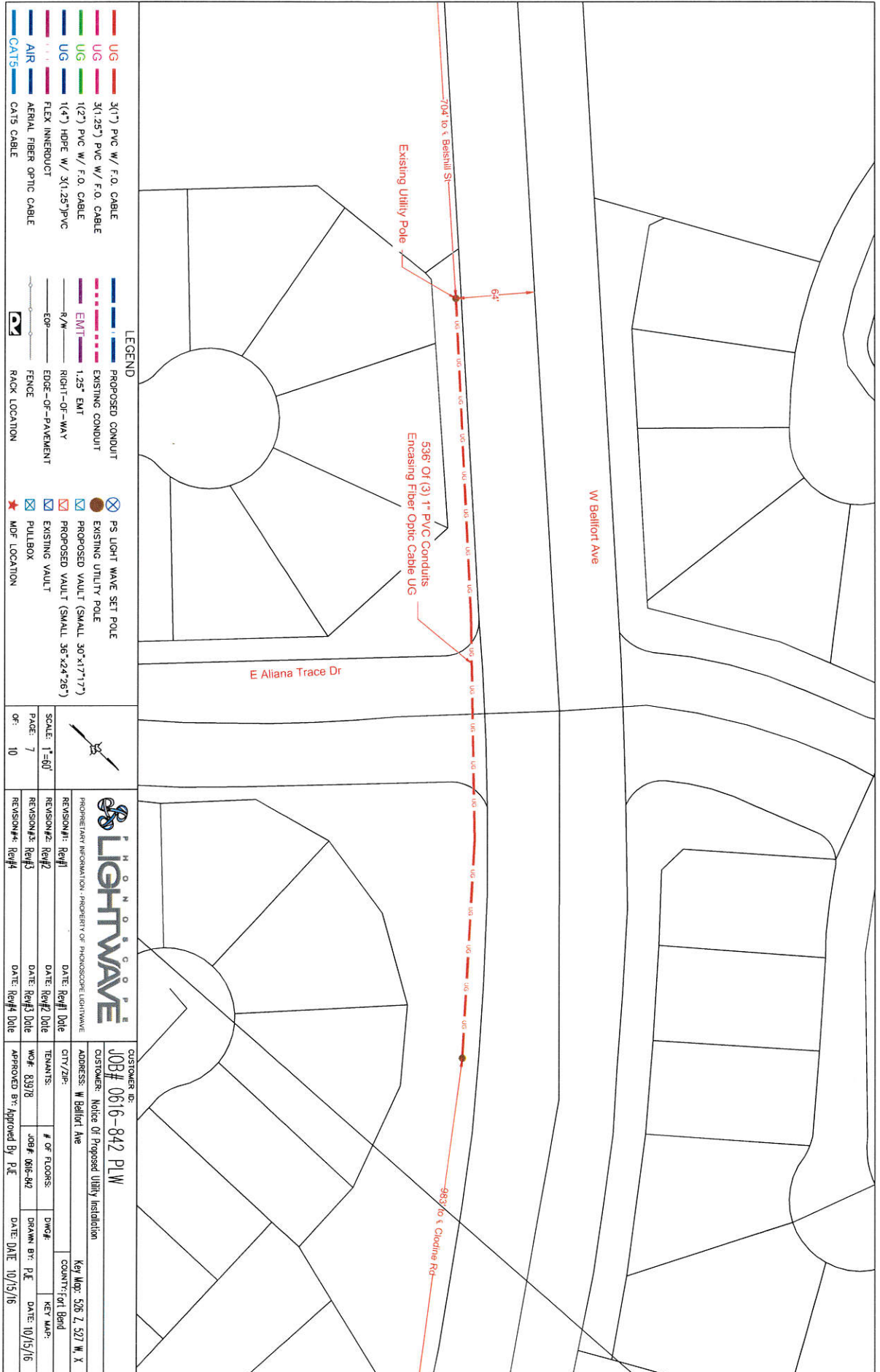
SCALE: 1"=60'
 PAGE: 5
 OF: 10

PHOSCOPE LIGHTWAVE

PROVISIONAL INFORMATION - PROPERTY OF PHOSCOPE LIGHTWAVE

REVISION#1: Rev#1	DATE: Rev#1 Date
REVISION#2: Rev#2	DATE: Rev#2 Date
REVISION#3: Rev#3	DATE: Rev#3 Date
REVISION#4: Rev#4	DATE: Rev#4 Date

CUSTOMER ID:	JOB# 0616-842 PLW
CUSTOMER:	Notice Of Proposed Utility Installation
ADDRESS:	W Bellfort Ave
CITY/ZIP:	Key Map: 526 Z, 527 W, X
TENANTS:	COUNTRY/INT Bldg
WQ#:	83978
JOB#:	006-842
APPROVED BY:	Approved By: P.E.
DATE:	DATE: 10/15/16



LEGEND

	3(1") PVC W/ F.O. CABLE		PROPOSED CONDUIT
	3(1.25") PVC W/ F.O. CABLE		EXISTING CONDUIT
	1(2") PVC W/ F.O. CABLE		EMT 1.25" EMT
	1(4") HDPE W/ 3(1.25")PVC		R/W
	FLEX INNERDUCT		EDGE-OF-PAVEMENT
	AIR		FENCE
	AERIAL FIBER OPTIC CABLE		RACK LOCATION
	CATS		CATS CABLE

	PS LIGHT WAVE SET POLE
	EXISTING UTILITY POLE
	PROPOSED VAULT (SMALL 30"x17"x7")
	PROPOSED VAULT (SMALL 36"x24"x6")
	EXISTING VAULT
	PULLBOX
	MDF LOCATION

	SCALE: 1"=60'
	PAGE: 7
	OF: 10

	LIGHTWAVE
PROPRIETARY INFORMATION - PROPERTY OF PHOSCOPE LIGHTWAVE	
REVISION#1: Rev#1	DATE: Rev#1 Date
REVISION#2: Rev#2	DATE: Rev#2 Date
REVISION#3: Rev#3	DATE: Rev#3 Date
REVISION#4: Rev#4	DATE: Rev#4 Date

CUSTOMER ID:	JOB# 0616-842 PW
CUSTOMER:	Notice Of Proposed Utility Installation
ADDRESS:	W Belfort Ave
CITY/ZIP:	
TENANTS:	
WOF: 8/9/18	# OF FLOORS:
APPROVED BY: Approved By PLE	JOB# 0616-842
DATE: 10/15/16	DRAWN BY: P.E.
	DATE: 10/15/16

Key Map: 526 2, 527 W, X	COUNTY: Fort Bend
KEY MAP:	

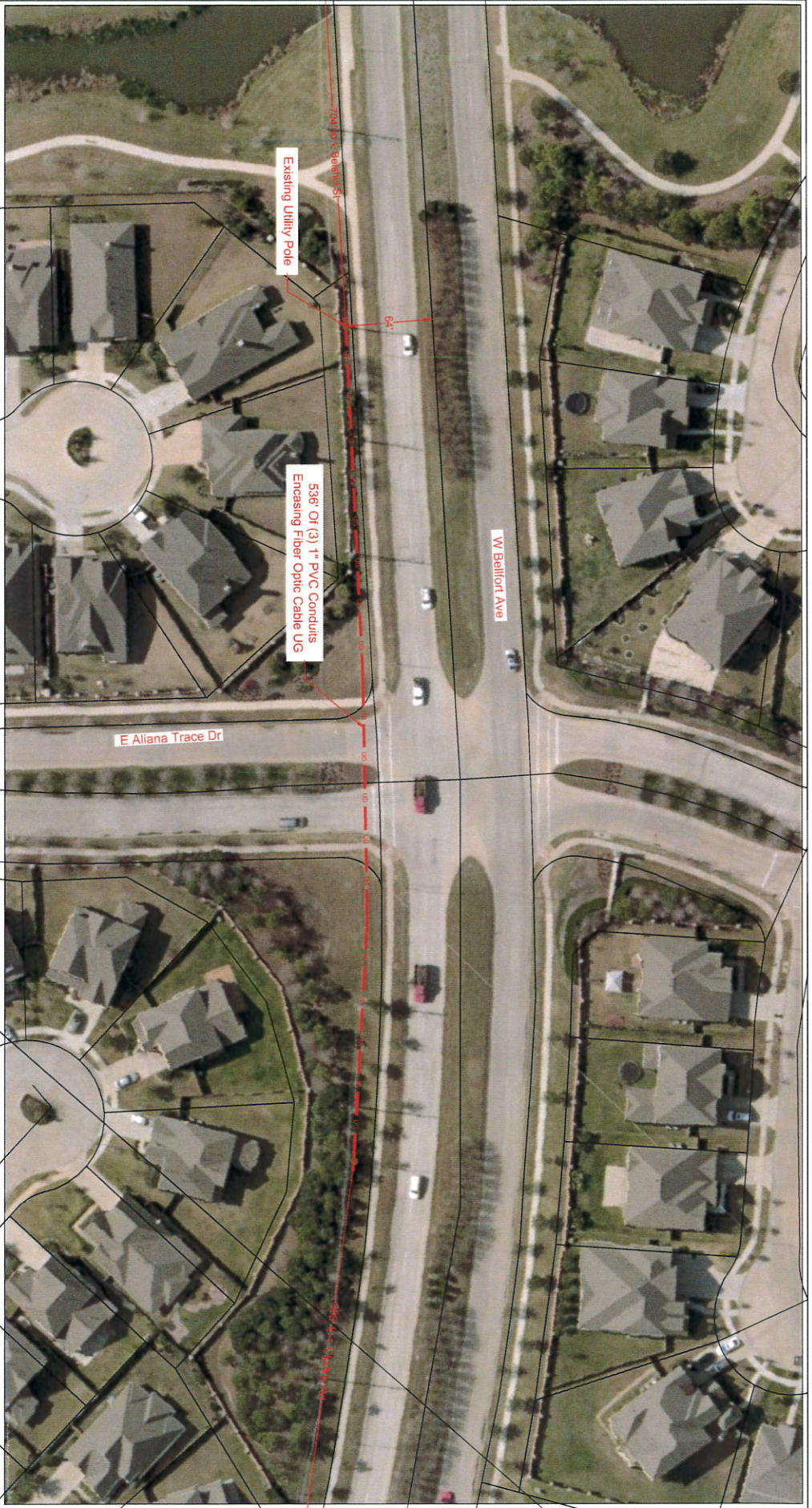


LEGEND	
	3(1") PVC W/ F.O. CABLE
	3(1.25") PVC W/ F.O. CABLE
	1(2") PVC W/ F.O. CABLE
	1(4") HDPE W/ 3(1.25") PVC
	FLEX INNERDUCT
	AERIAL FIBER OPTIC CABLE
	CATS CABLE
	PROPOSED CONDUIT
	EXISTING CONDUIT
	1.25" EMT
	R/W
	EDGE-OF-PAVEMENT
	FENCE
	RACK LOCATION
	PS LIGHT WAVE SET POLE
	EXISTING UTILITY POLE
	PROPOSED VAULT (SMALL, 30"x17"x7")
	PROPOSED VAULT (SMALL, 36"x24"x6")
	EXISTING VAULT
	PULLBOX
	WDF LOCATION

	SCALE: 1"=60'
PAGE: 6	OF: 10

PROFESSIONAL INFORMATION - PROPERTY OF PHOENIX LIGHTWAVE	
REVISION#1: Rev#1	DATE: Rev#1 Date
REVISION#2: Rev#2	DATE: Rev#2 Date
REVISION#3: Rev#3	DATE: Rev#3 Date
REVISION#4: Rev#4	DATE: Rev#4 Date

CUSTOMER ID:	JOB# 0616-842 PW
CUSTOMER:	Notice Of Proposed Utility Installation
ADDRESS:	W Bellfront Ave
CITY/ZIP:	
KEY MAP:	Key Map: 526 L, 527 M, X
COUNTY:	Fort Bend
REVISION#:	
DATE:	
WDF:	83978
JOB#:	0616-842
DATE:	10/15/16
APPROVED BY:	P.E.
DATE:	10/15/16



LEGEND

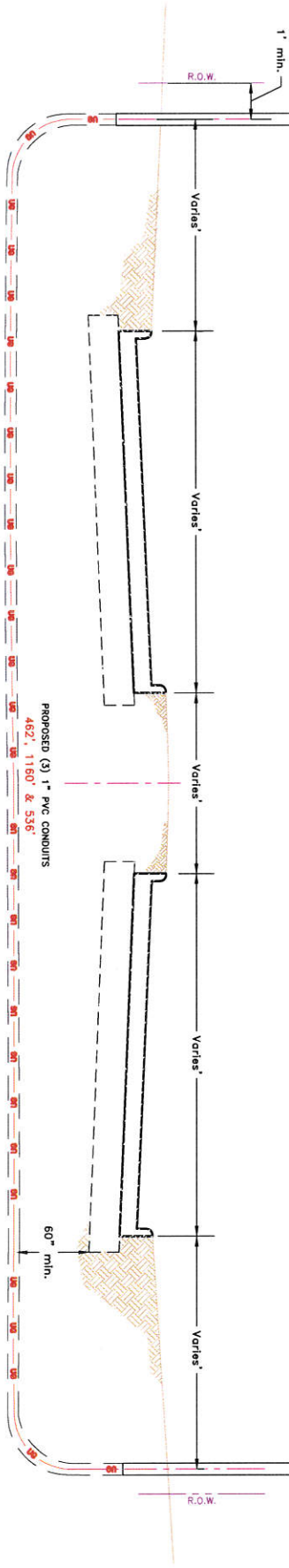
	3(1") PVC W/ F.O. CABLE		PROPOSED CONDUIT
	UG 3(1.25") PVC W/ F.O. CABLE		EXISTING CONDUIT
	UG 1(2") PVC W/ F.O. CABLE		1.25" EMT
	UG 1(4") HDPE W/ 3(1.25") PVC		R/W
	AIR FLEX INNERDUCT		EDGE-OF-PAVEMENT
	AIR AERIAL FIBER OPTIC CABLE		FENCE
	CATS CAT5 CABLE		RACK LOCATION

	SCALE: 1"=60'
PAGE: 8	OF: 10
PHOTONIC LIGHTWAVE	
PROFESSIONAL INFORMATION - PROPERTY OF PHOTONIC LIGHTWAVE	CUSTOMER ID: JOB# 0616-842 PLW
REVISION#1: Rev#1	DATE: Rev#1 Date
REVISION#2: Rev#2	DATE: Rev#2 Date
REVISION#3: Rev#3	DATE: Rev#3 Date
REVISION#4: Rev#4	DATE: Rev#4 Date
CITY/ZIP:	ADDRESS: W Bellfort Ave
TELEPHONE:	WOF: 83978
DATE:	DATE: 10/15/16
APPROVED BY: P.E.	DATE: 10/15/16



- General Notes:**
- 1) Surface to be restored to its original condition in compliance with Fort Bend County Standards.
 - 2) Contractors shall provide and install traffic control devices in conformance with part VI of Texas manual on Uniform Traffic Control Devices (TMUTCD—Latest Edition with Revisions) during construction.
 - 3) No Lanes shall be blocked 7am-9am and 4pm-6:30pm Monday thru Friday.

Binion Ln
 FM 1464
 E Aliana Trace Dr



- LEGEND**
- UG 3(1") PVC W/ F.O. CABLE
 - UG 3(1.25") PVC W/ F.O. CABLE
 - UG 1(2") PVC W/ F.O. CABLE
 - UG 1(4") HDPE W/ 3(1.25")PVC
 - FLEX INNERDUCT
 - AIR AERIAL FIBER OPTIC CABLE
 - CATS CATS CABLE
 - PROPOSED CONDUIT
 - EXISTING CONDUIT
 - EMT 1.25" EMT
 - R/M RIGHT-OF-WAY
 - EDGE-OF-PAVEMENT
 - FENCE
 - RACK LOCATION
 - PS Light Wave SET POLE
 - EXISTING UTILITY POLE
 - PROPOSED VAULT (UNIVERSAL 24"x36"x24")
 - PROPOSED VAULT (LARGE 36"x24"x26")
 - EXISTING VAULT
 - PULLBOX
 - MDF LOCATION

SCALE: N.I.S	REVISION#1: .	DATE: Rev#1 Date	Job#
PAGE: 10	REVISION#2: Rev#2	DATE: Rev#2 Date	0616-842 PLW
OF: 10	REVISION#3: Rev#3	DATE: Rev#3 Date	Job#
	REVISION#4: Rev#4	DATE: Rev#4 Date	0616-842 PLW

INDEPENDENT INFORMATION: PROJECT OF PROPOSOR LIGHTWAVE	DESCRIPTION: Notice Of Proposed Utility Installation	KEY MAP: 526 L 527 W X
CITY/ZIP:	TENANTS:	COUNTY: Fort Bend
W.O.#: 83978	# OF FLOORS:	KEY MAP:
APPROVED BY: R.E	DRAWN BY: R.E	DATE: 10/15/2016
DATE: 10/15/2016	DATE: 10/15/2016	