

**REVIEW BY FORT BEND COUNTY COMMISSIONERS COURT**

On this 25th day of October, 2016, Commissioners Court came on to be heard and reviewed the accompanying notice of AT&T Job Location Grand Mission Boulevard, Richmond, TX 77407 Date 3/6/2007 Bond No. CH1-001686693-01, Permit No. 2016-9912 to make use of certain Fort Bend County property subject to, "A Revised Order Regulating the Laying, Construction, Maintenance, and Repair of Buried Cables, Conduits, and Pole Lines, In, Under, Across or Along Roads, Streets, Highways, and Drainage Ditches in Fort Bend County, Texas, Under the Jurisdiction of the Commissioners Court of Fort Bend County, Texas," as passed by the Commissioners Court of Fort Bend County, Texas the 3rd day of August, 1987, recorded in Volume \_\_\_\_\_ of the Minutes of the Commissioners Court of Fort Bend County, Texas, to the extent that such order is not inconsistent with Article 1436a, Vernon's Texas Civil Statutes. Upon Motion of Commissioner \_\_\_\_\_, seconded by Commissioner \_\_\_\_\_, duly put and carried, it is ORDERED, ADJUDGED AND DECREED that said notice of said above purpose is hereby acknowledged by the Commissioners Court of Fort Bend County, Texas, and that said notice be placed on record according to the regulation order thereof.

Notes:

1. Evidence of review by the Commissioners Court must be kept on the job site and failure to do so constitutes grounds for job shutdown.
2. Written notices are required:
  - a. 48 hours in advance of construction start up, and
  - b. when construction is completed and ready for final inspection
 Mail notices to: Permit Administrator  
 Fort Bend County Engineering  
 301 Jackson Street  
 Richmond, Texas 77469  
 281-633-7500
3. This permit expires one (1) year from date of permit if construction has not commenced.

By: Charles O. Ay  
County Engineer

Presented to Commissioners Court and approved.  
Recorded in Volume

Minutes of Commissioners Court

By: N/A  
Drainage District Engineer/Manager

Clerk of Commissioners Court

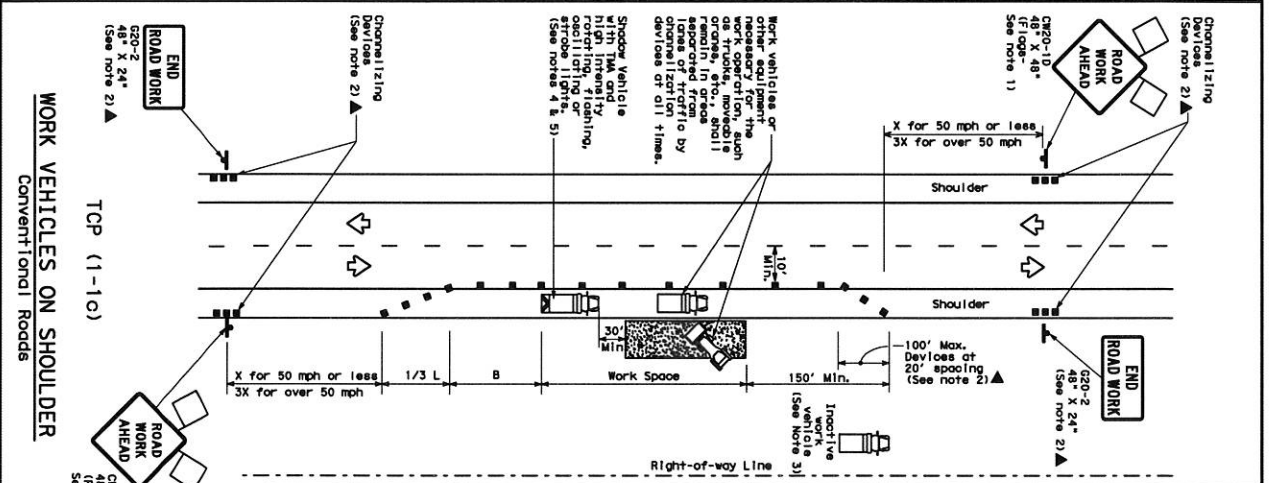
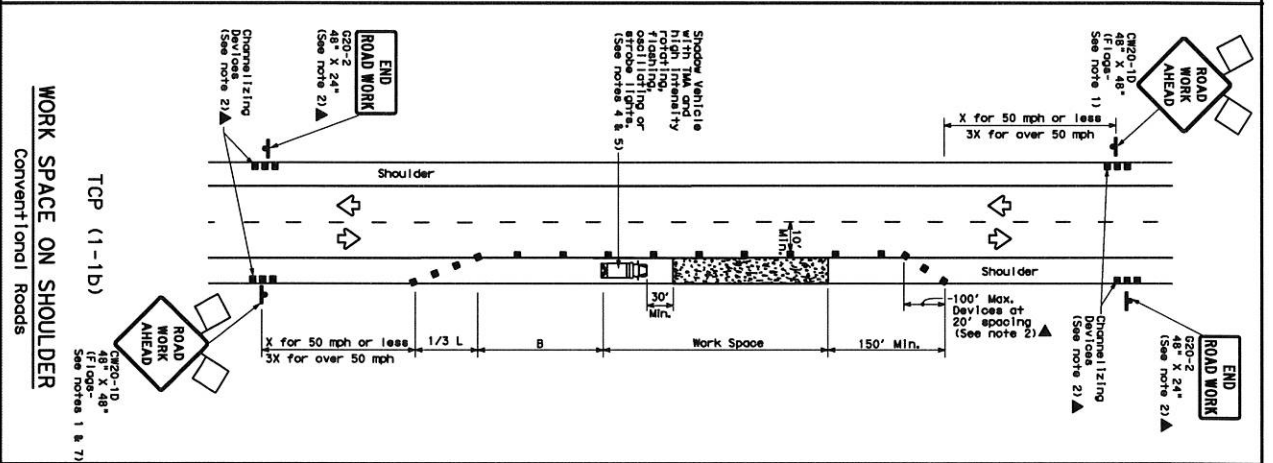
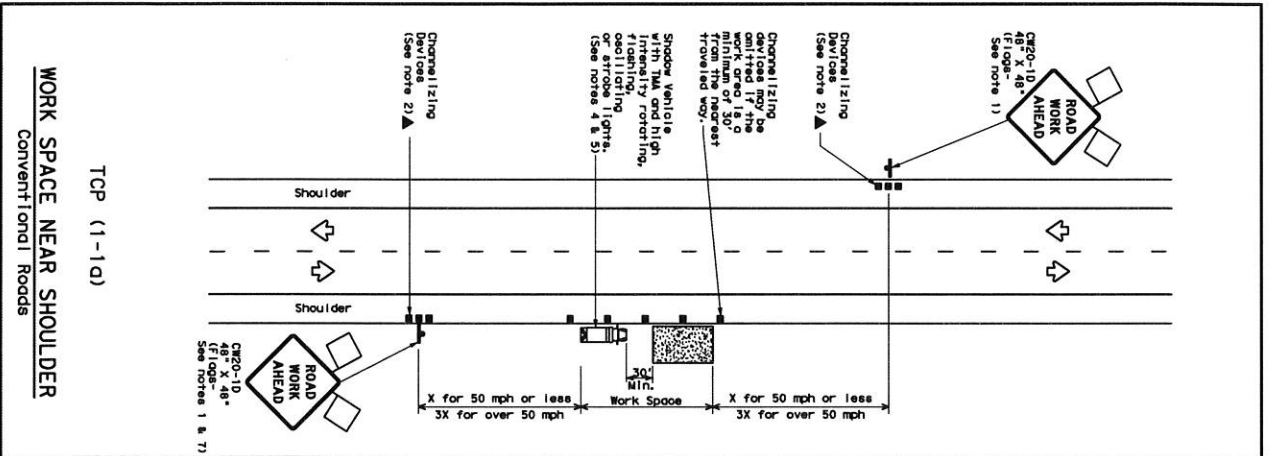
By: \_\_\_\_\_  
Deputy





DISCLAIMER: The use of this standard is governed by the "Texas Engineering Practice Act". No warranty of any kind is made by TxDOT for any purpose whatsoever. TxDOT assumes no responsibility for the conversion of this standard to other formats or for incorrect results or damages resulting from its use.

DATE:  
FILE:



**LEGEND**

	Type 3 Barricade		Channelizing Device
	Heavy Work Vehicle		Truck Mounted Attenuator (TMA)
	Trailer Mounted Flashing Arrow Board		Portable Changeable Message Sign (PCMS)
	Sign		Traffic Flow
	Flag		Flagger

Posted Speed	Formula	Minimum Distance	Suggested Minimum Spacing of Channelizing Device	Minimum Spacing of Barricade	Suggested Length/Radius of Barricade
30	$L = WS^2$	10'	12'	30'	90'
35	$L = WS^2$	150'	180'	60'	120'
40	$L = WS^2$	205'	225'	75'	160'
45	$L = WS^2$	265'	295'	90'	240'
50	$L = WS^2$	350'	400'	100'	320'
55	$L = WS^2$	450'	530'	110'	400'
60	$L = WS^2$	550'	660'	120'	500'
65	$L = WS^2$	650'	800'	130'	600'
70	$L = WS^2$	750'	950'	140'	700'
75	$L = WS^2$	850'	1100'	150'	800'

\* Conventional Roads Only  
\*\* Top lengths have been rounded off.  
L=Length of Taper (FT) Multiplied by Offset (FT) Speeded Speed(LPH)

**TYPICAL USAGE**

MOBILE DURATION	SHORT TERM STATIONARY	INTERMEDIATE STATIONARY	LONG TERM STATIONARY

- GENERAL NOTES**
- Flags attached to signs where shown are required.
  - All traffic control devices illustrated are required, except those denoted with the triangle symbol may be omitted when stored elsewhere in the plan, or for routine maintenance work, when approved by the Engineer.
  - Inoperative work vehicles or other equipment should be parked near the right-of-way line and not parked on the paved shoulder.
  - A Shadow Vehicle with a TMA should be used anytime it can be positioned 30 to 100 feet in advance of the area of exposure without adversely impact traffic flow. The Shadow Vehicle should be positioned to remain in place, Type 3 Barricades or other channelizing devices may be substituted for the Shadow Vehicle and TMA.
  - Additional Shadow Vehicles with TMAs may be positioned off the paved shoulder to provide additional advance warning of the work area.
  - See TDS-11 for shoulder work on divided highways, expressways and freeways.
  - CR21-5 "SHOULDER WORK" signs may be used in place of CR20-10 "ROAD WORK AHEAD" signs for shoulder work on conventional roadways.

For construction or maintenance contractor work, specific project requirements for shadow vehicles can be found in TDS-11, TDS-12, TDS-13, TDS-14, TDS-15, TDS-16, TDS-17, TDS-18, TDS-19, TDS-20, TDS-21, TDS-22, TDS-23, TDS-24, TDS-25, TDS-26, TDS-27, TDS-28, TDS-29, TDS-30, TDS-31, TDS-32, TDS-33, TDS-34, TDS-35, TDS-36, TDS-37, TDS-38, TDS-39, TDS-40, TDS-41, TDS-42, TDS-43, TDS-44, TDS-45, TDS-46, TDS-47, TDS-48, TDS-49, TDS-50, TDS-51, TDS-52, TDS-53, TDS-54, TDS-55, TDS-56, TDS-57, TDS-58, TDS-59, TDS-60, TDS-61, TDS-62, TDS-63, TDS-64, TDS-65, TDS-66, TDS-67, TDS-68, TDS-69, TDS-70, TDS-71, TDS-72, TDS-73, TDS-74, TDS-75, TDS-76, TDS-77, TDS-78, TDS-79, TDS-80, TDS-81, TDS-82, TDS-83, TDS-84, TDS-85, TDS-86, TDS-87, TDS-88, TDS-89, TDS-90, TDS-91, TDS-92, TDS-93, TDS-94, TDS-95, TDS-96, TDS-97, TDS-98, TDS-99, TDS-100.

**Texas Department of Transportation**  
Traffic Operations Division

**TRAFFIC CONTROL PLAN**  
CONVENTIONAL ROAD  
SHOULDER WORK

TCP (1-1)-12

DATE	2-24-11	DESIGNED BY	1-12
FILE	1-80	CHECKED BY	4-98
		DATE	
		DATE	