

REVIEW BY FORT BEND COUNTY COMMISSIONERS COURT

On this 25th day of October, 2016, Commissioners Court came on to be heard and reviewed the accompanying notice of Baxter Construction Company, LLC Job Location 6440 Oilfield Road, Sugar Land, TX 77879 Date 10/6/2016 Bond No. 354-035-958, Permit No. 2016-9611 to make use of certain Fort Bend County property subject to, "A Revised Order Regulating the Laying, Construction, Maintenance, and Repair of Buried Cables, Conduits, and Pole Lines, In, Under, Across or Along Roads, Streets, Highways, and Drainage Ditches in Fort Bend County, Texas, Under the Jurisdiction of the Commissioners Court of Fort Bend County, Texas," as passed by the Commissioners Court of Fort Bend County, Texas the 3rd day of August, 1987, recorded in Volume _____ of the Minutes of the Commissioners Court of Fort Bend County, Texas, to the extent that such order is not inconsistent with Article 1436a, Vernon's Texas Civil Statutes. Upon Motion of Commissioner _____, seconded by Commissioner _____, duly put and carried, it is ORDERED, ADJUDGED AND DECREED that said notice of said above purpose is hereby acknowledged by the Commissioners Court of Fort Bend County, Texas, and that said notice be placed on record according to the regulation order thereof.

Notes:

1. Evidence of review by the Commissioners Court must be kept on the job site and failure to do so constitutes grounds for job shutdown.
2. Written notices are required:
 - a. 48 hours in advance of construction start up, and
 - b. when construction is completed and ready for final inspectionMail notices to: Permit Administrator
Fort Bend County Engineering
301 Jackson Street
Richmond, Texas 77469
281-633-7500
3. This permit expires one (1) year from date of permit if construction has not commenced.

By: 
County Engineer

Presented to Commissioners Court and approved.
Recorded in Volume _____

By: N/A
Drainage District Engineer/Manager

Minutes of Commissioners Court

Clerk of Commissioners Court
By: _____
Deputy

County of Fort Bend
Engineering Department

301 Jackson Street
Richmond, Texas 77469

Phone: (281) 633-7500

**Permit Application Review Form For
Cable, Conduit, and Pole Line Activity
In Fort Bend County**

Permit No. 2016-9611

The following "Notice of Proposed Cable, Conduit, and/or Pole Line activity in Fort Bend County" and accompanying attachments have been reviewed and the notice conforms to appropriate regulations set by Commissioner's Court of Fort Bend County, Texas.

(1) Complete Application Form:

a. Name of road, street, and/or drainage ditch affected.

b. Vicinity map showing course of directions

c. Plans and specifications

(2) Bond:

_____ District Attorney, approval when applicable.

_____ Perpetual bond currently posted.

_____ No: _____

_____ Amount: _____

Performance bond submitted.

_____ No: 354-035-958

_____ Amount: \$10,000.00

_____ Cashier's Check

_____ No: _____

_____ Amount: _____

_____ (3) Verbal permission given for emergencies, to start construction before approved in Commissioner's Court.

_____ Precinct Engineer Acknowledgment _____ Date _____

_____ Precinct Commissioner Acknowledgment _____ Date _____

(4)

_____ Drainage District Approval when applicable

We have reviewed this project and agree it meets minimum requirements.



Assistant County Engineer



Date

**PERFORMANCE BOND COVERING ALL CABLE, CONDUIT AND/OR POLE LINE
ACTIVITY IN, UNDER, ACROSS OR ALONG FORT BEND COUNTY ROAD
AUTHORIZED**

BOND NO 354-035-958

THE STATE OF TEXAS

§

KNOW ALL MEN BY THESE PRESENTS:

COUNTY OF FORT BEND

§

THAT WE, Baxter Construction Company, L.L.C. whose address is 3225 Ave. N., Fort Madison, IA 52627 Texas, hereinafter called the Principal, And Liberty Mutual Insurance Company, a Corporation existing under and by virtue of the laws of the state of MA and authorized to do an indemnifying business in the state of Texas, and whose principal office is located at 175 Berkeley Street, Boston, MA 02116, whose officer residing in the State of Texas, authorized to accept service in all suits and actions brought whining said state is Brock Baldwin and Whose address is 5930 Preston View Blvd., Suite 200, Dallas, TX 75240, hereinafter called the Surety, and held and firmly bound unto, Robert e. Hebert, County Judge of Fort Bend County, Texas, or his successors in office, in the full sum of Ten Thousand and 00/100***** Dollars (\$10,000.00) current, lawful money of the United States of America, to be paid to said Robert E. Hebert, County Judge of Fort Bend County, Texas, or his successors in office, to which payment well and truly to be made and done, we, the undersigned, bind ourselves and each of us, our heirs, executors, administrators, successors, assigns, and legal representatives, jointly and severally, by these presents.

THE CONDITION OF THIS BOND IS SUCH THAT, WHEREAS, the above bounden principal contemplates laying, constructing, maintaining and/or repairing one or more cables, conduits, and/or pole lines in, under, across and/or along roads, streets and highways, commercial driveway and median openings or modifications in the County of Fort Bend, and the State of Texas, under the jurisdiction of the Commissioners' Court of Fort Bend County, Texas, pursuant to the Commissioners' Court order adopted on the 1st day of December, A.D. 1980, recorded in Volume 13, of the Commissioners' Court Minutes of Fort Bend County, Texas, regulating same, which Commissioners' Court order is hereby referred to and made a part hereof for all purposes as though fully set out herein;

AND WHEREAS, the principal desires to provide Fort Bend County with a performance bond covering all such cable, conduit and/or pole line activity, commercial driveway and median openings or modifications;

NOW, THEREFORE, if the above bounden principal shall faithfully perform all its cable, conduit and/or pole line activity (including, but not limited to the laying, construction, maintenance and/or repair of cables, conduits and/or pole lines) in, under, across and/or along roads, streets and highways, commercial driveway and median openings or modifications in the County of Fort Bend and State of Texas, under the jurisdiction of the Commissioners Court of Fort Bend County, Texas, pursuant to and in accordance with minimum requirements and conditions of the above mentioned Commissioners' Court order set forth and specified to be by said principal done and performed, at the time and in the manner therein specified, and shall pay over and make good and reimburse Fort Bend County, all loss and damages which Fort Bend County may sustain by reason of any failure or default on the part of said principal, then this obligation shall be null and void, otherwise to remain in full force and effect.

This bond is payable at the County Courthouse in the County of Fort Bend and State of Texas.

It is understood that at any time Fort Bend County deems itself insecure under this bond, it may require further and/or additional bonds of the principal.

EXECUTED this 6th day of October, 2016.

Baxter Construction Company, L.L.C.

PRINCIPAL

Pony T. Smith
BY

Liberty Mutual Insurance Company

SURETY

Connie Smith
BY Connie Smith, Attorney-in-Fact

THIS POWER OF ATTORNEY IS NOT VALID UNLESS IT IS PRINTED ON RED BACKGROUND.

This Power of Attorney limits the acts of those named herein, and they have no authority to bind the Company except in the manner and to the extent herein stated.

Certificate No. 7430045

American Fire and Casualty Company
The Ohio Casualty Insurance Company

Liberty Mutual Insurance Company
West American Insurance Company

POWER OF ATTORNEY

KNOWN ALL PERSONS BY THESE PRESENTS: That American Fire & Casualty Company and The Ohio Casualty Insurance Company are corporations duly organized under the laws of the State of New Hampshire, that Liberty Mutual Insurance Company is a corporation duly organized under the laws of the State of Massachusetts, and West American Insurance Company is a corporation duly organized under the laws of the State of Indiana (herein collectively called the "Companies"), pursuant to and by authority herein set forth, does hereby name, constitute and appoint, Chris Steinagel; Christopher M. Kemp; Connie Smith; Michael J. Douglas; Robert Downey

all of the city of Hudson, state of WI each individually if there be more than one named, its true and lawful attorney-in-fact to make, execute, seal, acknowledge and deliver, for and on its behalf as surety and as its act and deed, any and all undertakings, bonds, recognizances and other surety obligations, in pursuance of these presents and shall be as binding upon the Companies as if they have been duly signed by the president and attested by the secretary of the Companies in their own proper persons.

IN WITNESS WHEREOF, this Power of Attorney has been subscribed by an authorized officer or official of the Companies and the corporate seals of the Companies have been affixed thereto this 25th day of July, 2016.



American Fire and Casualty Company
The Ohio Casualty Insurance Company
Liberty Mutual Insurance Company
West American Insurance Company

By: David M. Carey
David M. Carey, Assistant Secretary

STATE OF PENNSYLVANIA ss
COUNTY OF MONTGOMERY

On this 25th day of July, 2016, before me personally appeared David M. Carey, who acknowledged himself to be the Assistant Secretary of American Fire and Casualty Company, Liberty Mutual Insurance Company, The Ohio Casualty Insurance Company, and West American Insurance Company, and that he, as such, being authorized so to do, execute the foregoing instrument for the purposes therein contained by signing on behalf of the corporations by himself as a duly authorized officer.

IN WITNESS WHEREOF, I have hereunto subscribed my name and affixed my notarial seal at Plymouth Meeting, Pennsylvania, on the day and year first above written.



Notarial Seal
Teresa Pastella, Notary Public
Plymouth Twp., Montgomery County
My Commission Expires March 28, 2017
Member, Pennsylvania Association of Notaries

By: Teresa Pastella
Teresa Pastella, Notary Public

This Power of Attorney is made and executed pursuant to and by authority of the following By-laws and Authorizations of American Fire and Casualty Company, The Ohio Casualty Insurance Company, Liberty Mutual Insurance Company, and West American Insurance Company which resolutions are now in full force and effect reading as follows:

ARTICLE IV – OFFICERS – Section 12. Power of Attorney. Any officer or other official of the Corporation authorized for that purpose in writing by the Chairman or the President, and subject to such limitation as the Chairman or the President may prescribe, shall appoint such attorneys-in-fact, as may be necessary to act in behalf of the Corporation to make, execute, seal, acknowledge and deliver as surety any and all undertakings, bonds, recognizances and other surety obligations. Such attorneys-in-fact, subject to the limitations set forth in their respective powers of attorney, shall have full power to bind the Corporation by their signature and execution of any such instruments and to attach thereto the seal of the Corporation. When so executed, such instruments shall be as binding as if signed by the President and attested to by the Secretary. Any power or authority granted to any representative or attorney-in-fact under the provisions of this article may be revoked at any time by the Board, the Chairman, the President or by the officer or officers granting such power or authority.

ARTICLE XIII – Execution of Contracts – SECTION 5. Surety Bonds and Undertakings. Any officer of the Company authorized for that purpose in writing by the chairman or the president, and subject to such limitations as the chairman or the president may prescribe, shall appoint such attorneys-in-fact, as may be necessary to act in behalf of the Company to make, execute, seal, acknowledge and deliver as surety any and all undertakings, bonds, recognizances and other surety obligations. Such attorneys-in-fact subject to the limitations set forth in their respective powers of attorney, shall have full power to bind the Company by their signature and execution of any such instruments and to attach thereto the seal of the Company. When so executed such instruments shall be as binding as if signed by the president and attested by the secretary.

Certificate of Designation – The President of the Company, acting pursuant to the Bylaws of the Company, authorizes David M. Carey, Assistant Secretary to appoint such attorneys-in-fact as may be necessary to act on behalf of the Company to make, execute, seal, acknowledge and deliver as surety any and all undertakings, bonds, recognizances and other surety obligations.

Authorization – By unanimous consent of the Company's Board of Directors, the Company consents that facsimile or mechanically reproduced signature of any assistant secretary of the Company, wherever appearing upon a certified copy of any power of attorney issued by the Company in connection with surety bonds, shall be valid and binding upon the Company with the same force and effect as though manually affixed.

I, Gregory W. Davenport, the undersigned, Assistant Secretary, of American Fire and Casualty Company, The Ohio Casualty Insurance Company, Liberty Mutual Insurance Company, and West American Insurance Company do hereby certify that the original power of attorney of which the foregoing is a full, true and correct copy of the Power of Attorney executed by said Companies, is in full force and effect and has not been revoked.

IN TESTIMONY WHEREOF, I have hereunto set my hand and affixed the seals of said Companies this 6th day of October, 2016.



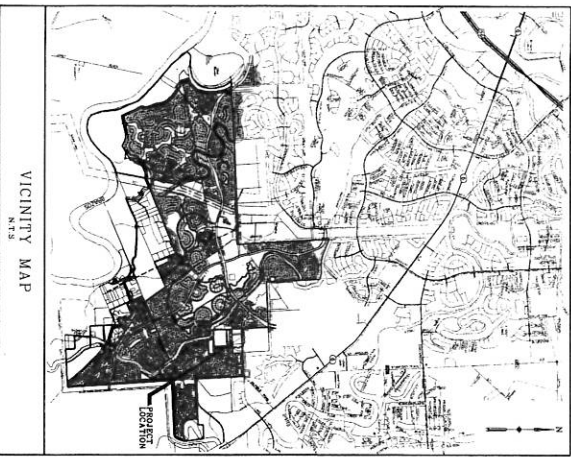
By: Gregory W. Davenport
Gregory W. Davenport, Assistant Secretary

Not valid for mortgage, note, loan, letter of credit, currency rate, interest rate or residual value guarantees.

To confirm the validity of this Power of Attorney call 1-610-832-8240 between 9:00 am and 4:30 pm EST on any business day.

CONSTRUCTION PLANS FOR

INSPIRED LIVING - HOUSTON 6440 OILFIELD ROAD SUGAR LAND, TX. 77479 ASSISTED LIVING & MEMORY CARE WITHIN FORT BEND COUNTY, TEXAS



JOB NO. 2013-104-000

Engineering and Surveying
9900 Richmond Avenue, Suite 4500 N
Houston, Texas 77042
(713) 783-7788 (713) 783-3580 Fax
TPE FIRM REG. No. 2876
TPECS FIRM REG. No. 100086

DATE: DECEMBER 2013

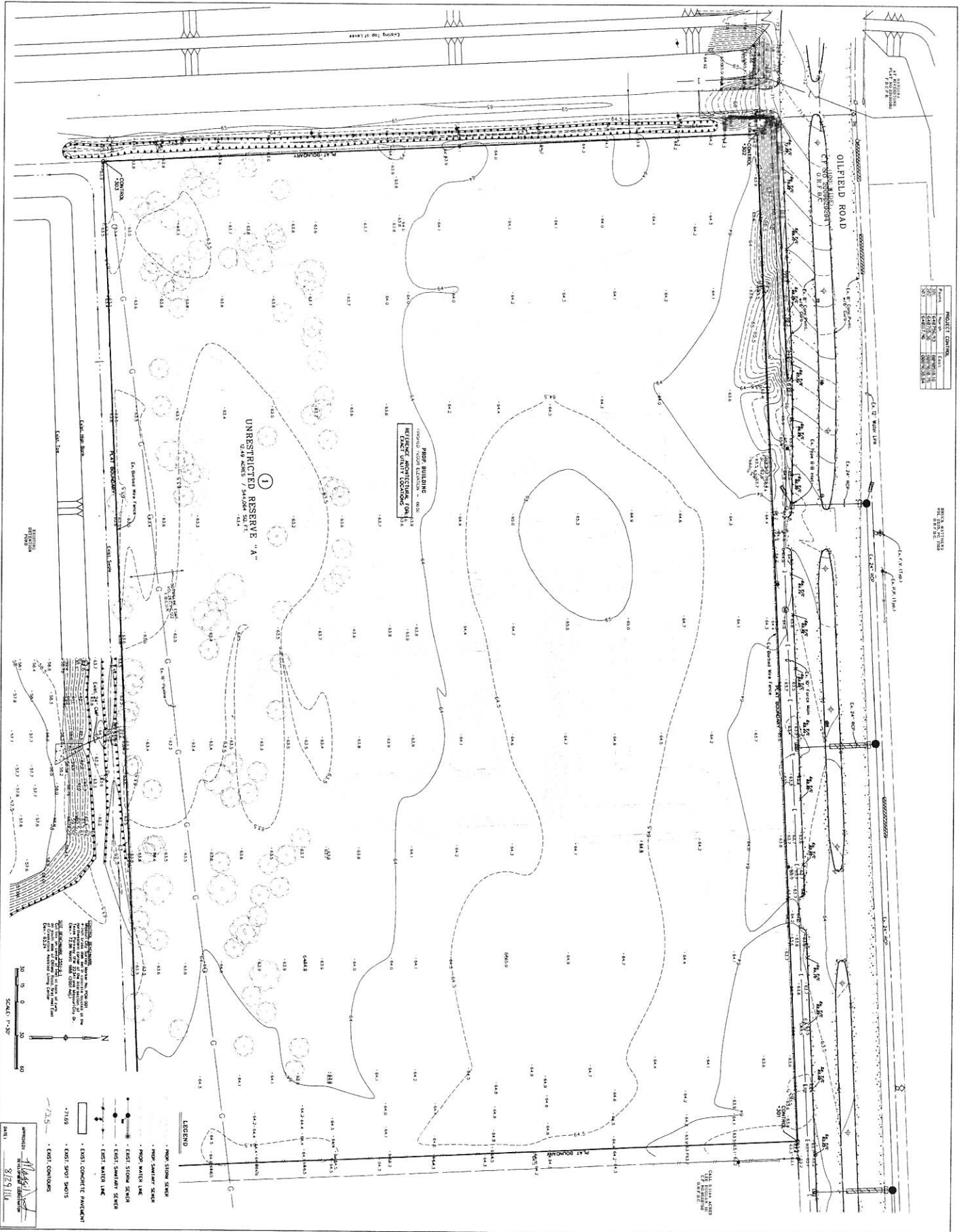
FORT BEND COUNTY LICENSE
Contract: *6440 Oilfield Rd*
Date: *12/11/13*
Type of License: *Professional Engineer*
Name of Licensee: *David A. Costello*
Address: *9900 Richmond Avenue, Suite 4500 N, Houston, TX 77042*
Phone: *713-783-7788*
Fax: *713-783-3580*
Exp. Date: *12/31/16*



CONTACT NUMBERS:
FORT BEND COUNTY MULTI-MULTI - OPERATOR - 512-698-2388
FORT BEND COUNTY MULTI-MULTI - ENGINEER - COSTELLO, Inc. 713-783-7788
FORT BEND COUNTY DRAINAGE DISTRICT - 281-242-2800

INDEX OF DRAWINGS

NO.	DESCRIPTION
C-1	CIVIL CONSTRUCTION NOTES
C-2	CIVIL PAVING AND GRADING LAYOUT
C-3	OILFIELD ROAD LEFT TURN LANE
C-4	CIVIL WATER LINE AND SANITARY SEWER LAYOUT
C-5	CIVIL PAVING, UTILITY COORDINATES AND STORM CALCULATIONS
C-6	CIVIL SITEWORK AND SOILS LAYOUT
C-7	CIVIL POLLUTION PREVENTION PLAN
C-8	CIVIL POLLUTION PREVENTION DETAILS
C-9	CIVIL POLLUTION PREVENTION DETAILS - WESTERS PFD/ISA
C-10	CITY OF MISSOURI CITY DETAILS - 01
C-11	CITY OF MISSOURI CITY DETAILS - 02
C-12	CITY OF MISSOURI CITY DETAILS - 03
C-13	CITY OF MISSOURI CITY DETAILS - 04
C-14	CITY OF MISSOURI CITY DETAILS - 05
C-15	CITY OF MISSOURI CITY DETAILS - 06
C-16	CITY OF MISSOURI CITY DETAILS - 07
C-17	CITY OF MISSOURI CITY DETAILS - 08
C-18	CITY OF MISSOURI CITY DETAILS - 09
C-19	CITY OF MISSOURI CITY DETAILS - 10
C-20	CITY OF MISSOURI CITY DETAILS - 11
C-21	CITY OF MISSOURI CITY DETAILS - 12
C-22	CITY OF MISSOURI CITY DETAILS - 13
C-23	CITY OF MISSOURI CITY DETAILS - 14
C-24	CITY OF MISSOURI CITY DETAILS - 15
C-25	CITY OF MISSOURI CITY DETAILS - 16
C-26	CITY OF MISSOURI CITY DETAILS - 17
C-27	CITY OF MISSOURI CITY DETAILS - 18
C-28	CITY OF MISSOURI CITY DETAILS - 19
C-29	CITY OF MISSOURI CITY DETAILS - 20
C-30	CITY OF MISSOURI CITY DETAILS - 21
C-31	CITY OF MISSOURI CITY DETAILS - 22
C-32	CITY OF MISSOURI CITY DETAILS - 23
C-33	CITY OF MISSOURI CITY DETAILS - 24
C-34	CITY OF MISSOURI CITY DETAILS - 25
C-35	CITY OF MISSOURI CITY DETAILS - 26
C-36	CITY OF MISSOURI CITY DETAILS - 27
C-37	CITY OF MISSOURI CITY DETAILS - 28
C-38	CITY OF MISSOURI CITY DETAILS - 29
C-39	CITY OF MISSOURI CITY DETAILS - 30
C-40	CITY OF MISSOURI CITY DETAILS - 31
C-41	CITY OF MISSOURI CITY DETAILS - 32
C-42	CITY OF MISSOURI CITY DETAILS - 33
C-43	CITY OF MISSOURI CITY DETAILS - 34
C-44	CITY OF MISSOURI CITY DETAILS - 35
C-45	CITY OF MISSOURI CITY DETAILS - 36
C-46	CITY OF MISSOURI CITY DETAILS - 37
C-47	CITY OF MISSOURI CITY DETAILS - 38
C-48	CITY OF MISSOURI CITY DETAILS - 39
C-49	CITY OF MISSOURI CITY DETAILS - 40
C-50	CITY OF MISSOURI CITY DETAILS - 41
C-51	CITY OF MISSOURI CITY DETAILS - 42
C-52	CITY OF MISSOURI CITY DETAILS - 43
C-53	CITY OF MISSOURI CITY DETAILS - 44
C-54	CITY OF MISSOURI CITY DETAILS - 45
C-55	CITY OF MISSOURI CITY DETAILS - 46
C-56	CITY OF MISSOURI CITY DETAILS - 47
C-57	CITY OF MISSOURI CITY DETAILS - 48
C-58	CITY OF MISSOURI CITY DETAILS - 49
C-59	CITY OF MISSOURI CITY DETAILS - 50
C-60	CITY OF MISSOURI CITY DETAILS - 51
C-61	CITY OF MISSOURI CITY DETAILS - 52
C-62	CITY OF MISSOURI CITY DETAILS - 53
C-63	CITY OF MISSOURI CITY DETAILS - 54
C-64	CITY OF MISSOURI CITY DETAILS - 55
C-65	CITY OF MISSOURI CITY DETAILS - 56
C-66	CITY OF MISSOURI CITY DETAILS - 57
C-67	CITY OF MISSOURI CITY DETAILS - 58
C-68	CITY OF MISSOURI CITY DETAILS - 59
C-69	CITY OF MISSOURI CITY DETAILS - 60
C-70	CITY OF MISSOURI CITY DETAILS - 61
C-71	CITY OF MISSOURI CITY DETAILS - 62
C-72	CITY OF MISSOURI CITY DETAILS - 63
C-73	CITY OF MISSOURI CITY DETAILS - 64
C-74	CITY OF MISSOURI CITY DETAILS - 65
C-75	CITY OF MISSOURI CITY DETAILS - 66
C-76	CITY OF MISSOURI CITY DETAILS - 67
C-77	CITY OF MISSOURI CITY DETAILS - 68
C-78	CITY OF MISSOURI CITY DETAILS - 69
C-79	CITY OF MISSOURI CITY DETAILS - 70
C-80	CITY OF MISSOURI CITY DETAILS - 71
C-81	CITY OF MISSOURI CITY DETAILS - 72
C-82	CITY OF MISSOURI CITY DETAILS - 73
C-83	CITY OF MISSOURI CITY DETAILS - 74
C-84	CITY OF MISSOURI CITY DETAILS - 75
C-85	CITY OF MISSOURI CITY DETAILS - 76
C-86	CITY OF MISSOURI CITY DETAILS - 77
C-87	CITY OF MISSOURI CITY DETAILS - 78
C-88	CITY OF MISSOURI CITY DETAILS - 79
C-89	CITY OF MISSOURI CITY DETAILS - 80
C-90	CITY OF MISSOURI CITY DETAILS - 81
C-91	CITY OF MISSOURI CITY DETAILS - 82
C-92	CITY OF MISSOURI CITY DETAILS - 83
C-93	CITY OF MISSOURI CITY DETAILS - 84
C-94	CITY OF MISSOURI CITY DETAILS - 85
C-95	CITY OF MISSOURI CITY DETAILS - 86
C-96	CITY OF MISSOURI CITY DETAILS - 87
C-97	CITY OF MISSOURI CITY DETAILS - 88
C-98	CITY OF MISSOURI CITY DETAILS - 89
C-99	CITY OF MISSOURI CITY DETAILS - 90
C-100	CITY OF MISSOURI CITY DETAILS - 91
C-101	CITY OF MISSOURI CITY DETAILS - 92
C-102	CITY OF MISSOURI CITY DETAILS - 93
C-103	CITY OF MISSOURI CITY DETAILS - 94
C-104	CITY OF MISSOURI CITY DETAILS - 95
C-105	CITY OF MISSOURI CITY DETAILS - 96
C-106	CITY OF MISSOURI CITY DETAILS - 97
C-107	CITY OF MISSOURI CITY DETAILS - 98
C-108	CITY OF MISSOURI CITY DETAILS - 99
C-109	CITY OF MISSOURI CITY DETAILS - 100



NO.	REVISION	DATE
1	ISSUED FOR PERMIT	5/18/2016
2	REVISED FOR COMMENTS	5/18/2016
3	REVISED FOR COMMENTS	5/18/2016

NO. 1, 2, 3, 4, 5, 6, 7, 8, 9, 10, 11, 12, 13, 14, 15, 16, 17, 18, 19, 20, 21, 22, 23, 24, 25, 26, 27, 28, 29, 30, 31, 32, 33, 34, 35, 36, 37, 38, 39, 40, 41, 42, 43, 44, 45, 46, 47, 48, 49, 50, 51, 52, 53, 54, 55, 56, 57, 58, 59, 60, 61, 62, 63, 64, 65, 66, 67, 68, 69, 70, 71, 72, 73, 74, 75, 76, 77, 78, 79, 80, 81, 82, 83, 84, 85, 86, 87, 88, 89, 90, 91, 92, 93, 94, 95, 96, 97, 98, 99, 100

NO.	REVISION	DATE
1	ISSUED FOR PERMIT	5/18/2016
2	REVISED FOR COMMENTS	5/18/2016
3	REVISED FOR COMMENTS	5/18/2016

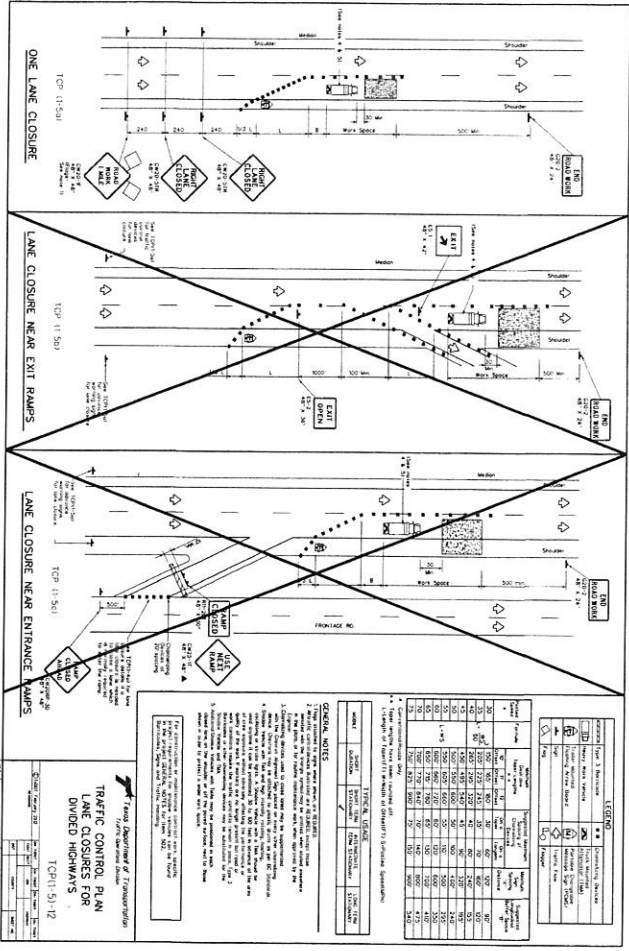
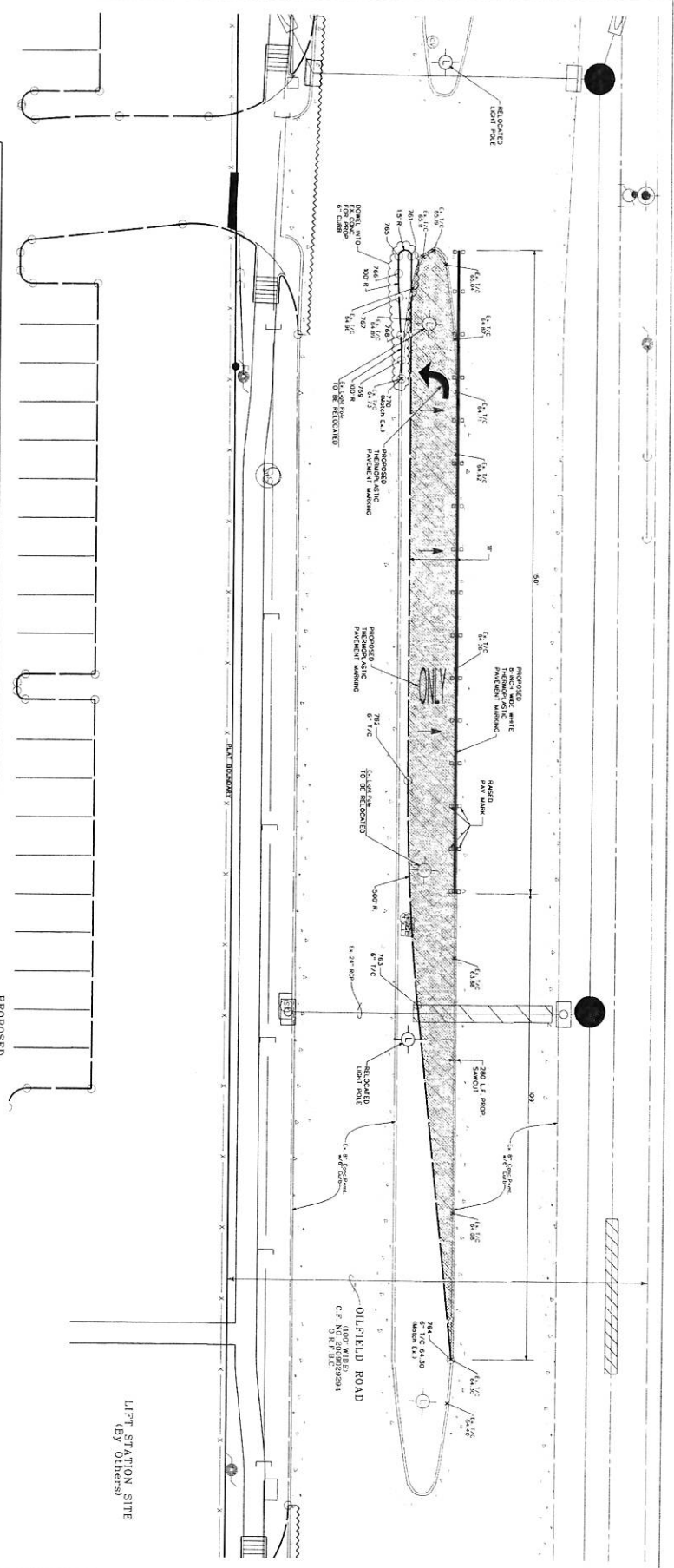
INSPIRED LIVING HOUSTON

5/18/2016



Engineering and Surveying
9900 Houston Road, Suite 7002
Houston, Texas 77062
(713) 782-7788 (713) 782-5880 Fax
TERRACON CONSULTING, INC. 00006
JOB #0115184

DRAWING TITLE
CIVIL GEOGRAPHY LAYOUT
SHEET C 2



TRAFFIC CONTROL PLAN
LANE CLOSURES FOR
SHOULDER MOVING

Legend:
 - Traffic Sign
 - Traffic Cone
 - Lane Closure
 - Shoulder Moving

Notes:
 1. All lane closures shall be performed in accordance with the Texas Manual on Traffic Control (TMC) and the Texas Department of Transportation (TxDOT) Standard Specifications for Road, Bridge, and Structures.
 2. All lane closures shall be performed in accordance with the Texas Manual on Traffic Control (TMC) and the Texas Department of Transportation (TxDOT) Standard Specifications for Road, Bridge, and Structures.
 3. All lane closures shall be performed in accordance with the Texas Manual on Traffic Control (TMC) and the Texas Department of Transportation (TxDOT) Standard Specifications for Road, Bridge, and Structures.

BACK OF 6" CURB

P.I.	Northing	Easting
761	640774.28	3089986.88
762	640779.88	3090090.01
763	640785.02	3090191.16
764	640790.16	3090292.31
765	640795.30	3090393.46
766	640800.44	3090494.61
767	640805.58	3090595.76
768	640810.72	3090696.91
769	640815.86	3090798.06
770	640821.00	3090899.21

LEGEND:
 - PROPOSED 6" BACK CONCRETE PAVEMENT
 - EXISTING 6" BACK OF 6" CURB



DATE: 8/23/14

INSPIRED LIVING HOUSTON

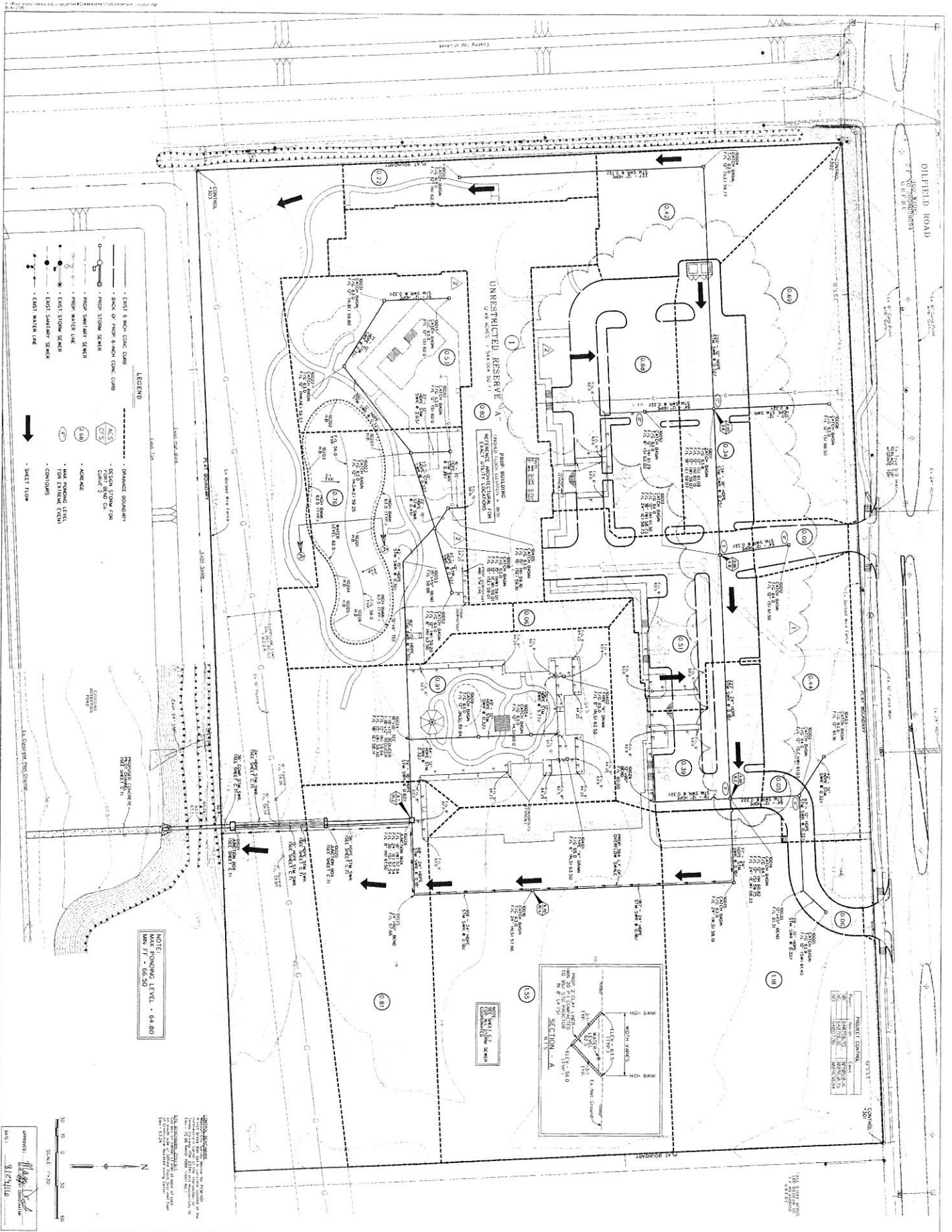


Engineering and Surveying
 9900 B Houston, Texas 77024
 (713) 783-7788 (713) 783-3300 Fax
 11815 FARMERS, No. 2000
 Houston, Texas 77036
 281-420-1194

DRAWING TITLE
 OLDFIELD ROAD
 LEFT TURN
 LANE
 SHEET C.4

REVISIONS

NO.	DATE	DESCRIPTION



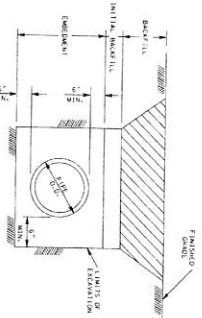
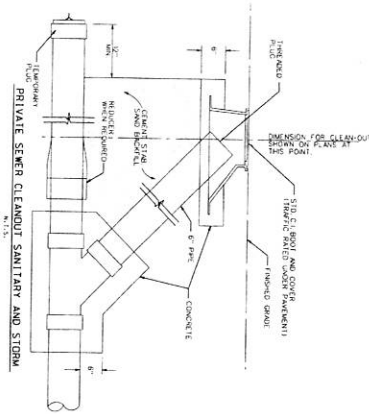
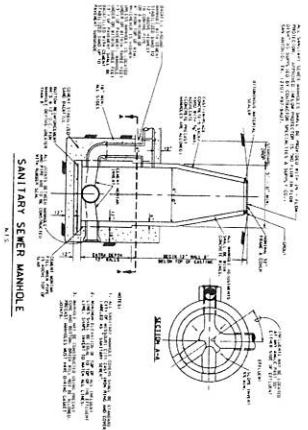
NO.	DATE	REVISION
1	07/23/21	ISSUED FOR PERMIT
2	07/23/21	REVISED PER COMMENTS
3	07/23/21	REVISED PER COMMENTS
4	07/23/21	REVISED PER COMMENTS

INSPIRED LIVING HOUSTON

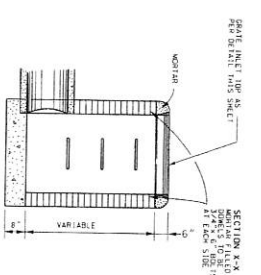


Engineering and Surveying
 9690 Richmond Avenue, Suite 600 N
 Houston, Texas 77036
 (713) 763-7788 (713) 763-5860 Fax
 TBE FIRM REG. NO. 283
 TBC'S FIRM REG. NO. 102486
 JWB 0075184

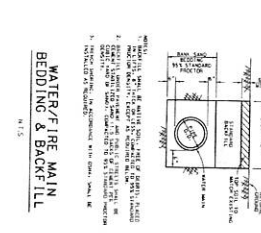
DRAWING TITLE
 CIVIL
 DRAINAGE
 LAYOUT
 SHEET C.5



1. BEDDING SHALL BE NATIVE SOIL, FREE OF DEBRIS, COMPACTED TO 95% STANDARD PROCTOR DENSITY, EXCEPT AS REQUIRED UNDER PARAGRAPH 2.
2. INITIAL BEDDING SHALL BE SAND OR GRAVEL, MAXIMUM STANDARD PROCTOR DENSITY, EXCEPT AS REQUIRED UNDER PARAGRAPH 1.
3. BEDDING SHALL BE CLEAN, STABILIZED SAND OR GRAVEL, EXCEPT AS REQUIRED UNDER PARAGRAPH 1.
4. BEDDING SHALL BE 2 TO 4 INCHES THICK, UNLESS OTHERWISE SPECIFIED.
5. BEDDING SHALL BE 2 TO 4 INCHES THICK, UNLESS OTHERWISE SPECIFIED.
6. SOIL TO BE PLACED SHALL BE NATIVE SOIL, FREE OF DEBRIS, COMPACTED TO 95% STANDARD PROCTOR DENSITY, EXCEPT AS REQUIRED UNDER PARAGRAPH 1.



SECTION B-B
CATCH BASIN
N.T.S.



1. BEDDING SHALL BE NATIVE SOIL, FREE OF DEBRIS, COMPACTED TO 95% STANDARD PROCTOR DENSITY, EXCEPT AS REQUIRED UNDER PARAGRAPH 2.

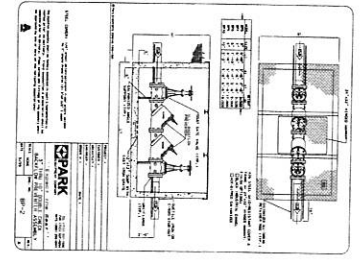
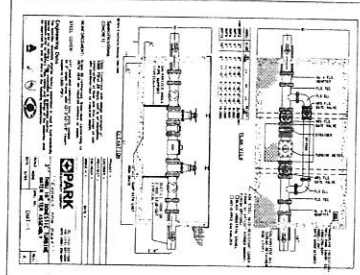
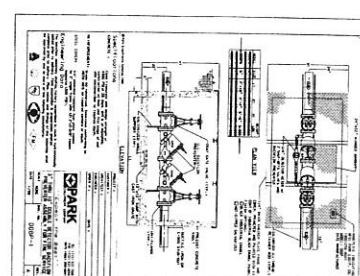
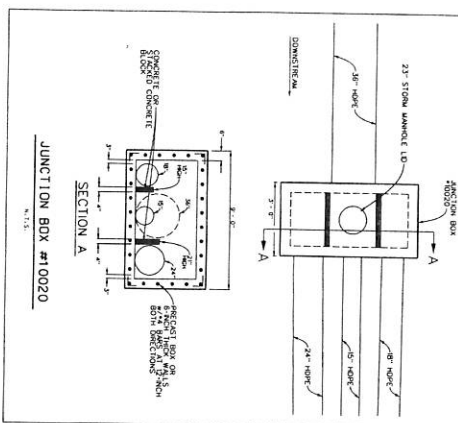
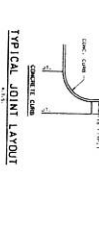
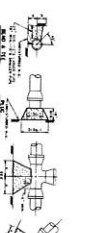
2. INITIAL BEDDING SHALL BE SAND OR GRAVEL, MAXIMUM STANDARD PROCTOR DENSITY, EXCEPT AS REQUIRED UNDER PARAGRAPH 1.

3. BEDDING SHALL BE CLEAN, STABILIZED SAND OR GRAVEL, EXCEPT AS REQUIRED UNDER PARAGRAPH 1.

4. BEDDING SHALL BE 2 TO 4 INCHES THICK, UNLESS OTHERWISE SPECIFIED.

5. BEDDING SHALL BE 2 TO 4 INCHES THICK, UNLESS OTHERWISE SPECIFIED.

6. SOIL TO BE PLACED SHALL BE NATIVE SOIL, FREE OF DEBRIS, COMPACTED TO 95% STANDARD PROCTOR DENSITY, EXCEPT AS REQUIRED UNDER PARAGRAPH 1.



GENERAL NOTES

1. ALL WORK SHALL BE IN ACCORDANCE WITH THE CITY OF HOUSTON SPECIFICATIONS FOR SEWERAGE AND SANITATION.
2. THE CONTRACTOR SHALL BE RESPONSIBLE FOR OBTAINING ALL NECESSARY PERMITS AND APPROVALS FROM THE CITY OF HOUSTON AND THE HOUSTON WATER UTILITIES DEPARTMENT.
3. THE CONTRACTOR SHALL MAINTAIN ACCESS TO ALL ADJACENT PROPERTIES AND UTILITIES AT ALL TIMES.
4. ALL MATERIALS AND WORKMANSHIP SHALL BE SUBJECT TO INSPECTION AND APPROVAL BY THE CITY ENGINEER.
5. THE CONTRACTOR SHALL PROTECT ALL EXISTING UTILITIES AND STRUCTURES.
6. ALL DIMENSIONS SHALL BE IN FEET AND INCHES UNLESS OTHERWISE SPECIFIED.
7. THE CONTRACTOR SHALL MAINTAIN RECORD DRAWINGS OF ALL WORK DONE.
8. ALL WORK SHALL BE COMPLETED WITHIN THE SPECIFIED TIME FRAME.
9. THE CONTRACTOR SHALL BE RESPONSIBLE FOR OBTAINING ALL NECESSARY PERMITS AND APPROVALS FROM THE CITY OF HOUSTON AND THE HOUSTON WATER UTILITIES DEPARTMENT.
10. THE CONTRACTOR SHALL MAINTAIN ACCESS TO ALL ADJACENT PROPERTIES AND UTILITIES AT ALL TIMES.
11. ALL MATERIALS AND WORKMANSHIP SHALL BE SUBJECT TO INSPECTION AND APPROVAL BY THE CITY ENGINEER.
12. THE CONTRACTOR SHALL PROTECT ALL EXISTING UTILITIES AND STRUCTURES.
13. ALL DIMENSIONS SHALL BE IN FEET AND INCHES UNLESS OTHERWISE SPECIFIED.
14. THE CONTRACTOR SHALL MAINTAIN RECORD DRAWINGS OF ALL WORK DONE.
15. ALL WORK SHALL BE COMPLETED WITHIN THE SPECIFIED TIME FRAME.

SECTION 1 - CONCRETE MANHOLE

1.1. CONCRETE MANHOLE SHALL BE CAST IN PLACE OR PRECAST CONCRETE MANHOLE SHALL BE USED.

1.2. THE MANHOLE SHALL BE CAST TO THE FINISH GRADE UNLESS OTHERWISE SPECIFIED.

1.3. THE MANHOLE SHALL BE CAST TO THE FINISH GRADE UNLESS OTHERWISE SPECIFIED.

1.4. THE MANHOLE SHALL BE CAST TO THE FINISH GRADE UNLESS OTHERWISE SPECIFIED.

1.5. THE MANHOLE SHALL BE CAST TO THE FINISH GRADE UNLESS OTHERWISE SPECIFIED.

1.6. THE MANHOLE SHALL BE CAST TO THE FINISH GRADE UNLESS OTHERWISE SPECIFIED.

1.7. THE MANHOLE SHALL BE CAST TO THE FINISH GRADE UNLESS OTHERWISE SPECIFIED.

1.8. THE MANHOLE SHALL BE CAST TO THE FINISH GRADE UNLESS OTHERWISE SPECIFIED.

1.9. THE MANHOLE SHALL BE CAST TO THE FINISH GRADE UNLESS OTHERWISE SPECIFIED.

1.10. THE MANHOLE SHALL BE CAST TO THE FINISH GRADE UNLESS OTHERWISE SPECIFIED.

SECTION 2 - PRECAST CONCRETE MANHOLE

2.1. PRECAST CONCRETE MANHOLES SHALL BE USED UNLESS OTHERWISE SPECIFIED.

2.2. THE MANHOLE SHALL BE CAST TO THE FINISH GRADE UNLESS OTHERWISE SPECIFIED.

2.3. THE MANHOLE SHALL BE CAST TO THE FINISH GRADE UNLESS OTHERWISE SPECIFIED.

2.4. THE MANHOLE SHALL BE CAST TO THE FINISH GRADE UNLESS OTHERWISE SPECIFIED.

2.5. THE MANHOLE SHALL BE CAST TO THE FINISH GRADE UNLESS OTHERWISE SPECIFIED.

2.6. THE MANHOLE SHALL BE CAST TO THE FINISH GRADE UNLESS OTHERWISE SPECIFIED.

2.7. THE MANHOLE SHALL BE CAST TO THE FINISH GRADE UNLESS OTHERWISE SPECIFIED.

2.8. THE MANHOLE SHALL BE CAST TO THE FINISH GRADE UNLESS OTHERWISE SPECIFIED.

2.9. THE MANHOLE SHALL BE CAST TO THE FINISH GRADE UNLESS OTHERWISE SPECIFIED.

2.10. THE MANHOLE SHALL BE CAST TO THE FINISH GRADE UNLESS OTHERWISE SPECIFIED.

SECTION 3 - MANHOLE FOR BOX SEWER

3.1. MANHOLES FOR BOX SEWERS SHALL BE CAST TO THE FINISH GRADE UNLESS OTHERWISE SPECIFIED.

3.2. THE MANHOLE SHALL BE CAST TO THE FINISH GRADE UNLESS OTHERWISE SPECIFIED.

3.3. THE MANHOLE SHALL BE CAST TO THE FINISH GRADE UNLESS OTHERWISE SPECIFIED.

3.4. THE MANHOLE SHALL BE CAST TO THE FINISH GRADE UNLESS OTHERWISE SPECIFIED.

3.5. THE MANHOLE SHALL BE CAST TO THE FINISH GRADE UNLESS OTHERWISE SPECIFIED.

3.6. THE MANHOLE SHALL BE CAST TO THE FINISH GRADE UNLESS OTHERWISE SPECIFIED.

3.7. THE MANHOLE SHALL BE CAST TO THE FINISH GRADE UNLESS OTHERWISE SPECIFIED.

3.8. THE MANHOLE SHALL BE CAST TO THE FINISH GRADE UNLESS OTHERWISE SPECIFIED.

3.9. THE MANHOLE SHALL BE CAST TO THE FINISH GRADE UNLESS OTHERWISE SPECIFIED.

3.10. THE MANHOLE SHALL BE CAST TO THE FINISH GRADE UNLESS OTHERWISE SPECIFIED.

SECTION 4 - STORM SEWER JOINT WELD DETAIL

4.1. STORM SEWER JOINT WELD DETAILS SHALL BE CAST TO THE FINISH GRADE UNLESS OTHERWISE SPECIFIED.

4.2. THE JOINT WELD SHALL BE CAST TO THE FINISH GRADE UNLESS OTHERWISE SPECIFIED.

4.3. THE JOINT WELD SHALL BE CAST TO THE FINISH GRADE UNLESS OTHERWISE SPECIFIED.

4.4. THE JOINT WELD SHALL BE CAST TO THE FINISH GRADE UNLESS OTHERWISE SPECIFIED.

4.5. THE JOINT WELD SHALL BE CAST TO THE FINISH GRADE UNLESS OTHERWISE SPECIFIED.

4.6. THE JOINT WELD SHALL BE CAST TO THE FINISH GRADE UNLESS OTHERWISE SPECIFIED.

4.7. THE JOINT WELD SHALL BE CAST TO THE FINISH GRADE UNLESS OTHERWISE SPECIFIED.

4.8. THE JOINT WELD SHALL BE CAST TO THE FINISH GRADE UNLESS OTHERWISE SPECIFIED.

4.9. THE JOINT WELD SHALL BE CAST TO THE FINISH GRADE UNLESS OTHERWISE SPECIFIED.

4.10. THE JOINT WELD SHALL BE CAST TO THE FINISH GRADE UNLESS OTHERWISE SPECIFIED.

SECTION 5 - BACKSTOP INLET & OUTFALL

5.1. BACKSTOP INLET & OUTFALL SHALL BE CAST TO THE FINISH GRADE UNLESS OTHERWISE SPECIFIED.

5.2. THE INLET & OUTFALL SHALL BE CAST TO THE FINISH GRADE UNLESS OTHERWISE SPECIFIED.

5.3. THE INLET & OUTFALL SHALL BE CAST TO THE FINISH GRADE UNLESS OTHERWISE SPECIFIED.

5.4. THE INLET & OUTFALL SHALL BE CAST TO THE FINISH GRADE UNLESS OTHERWISE SPECIFIED.

5.5. THE INLET & OUTFALL SHALL BE CAST TO THE FINISH GRADE UNLESS OTHERWISE SPECIFIED.

5.6. THE INLET & OUTFALL SHALL BE CAST TO THE FINISH GRADE UNLESS OTHERWISE SPECIFIED.

5.7. THE INLET & OUTFALL SHALL BE CAST TO THE FINISH GRADE UNLESS OTHERWISE SPECIFIED.

5.8. THE INLET & OUTFALL SHALL BE CAST TO THE FINISH GRADE UNLESS OTHERWISE SPECIFIED.

5.9. THE INLET & OUTFALL SHALL BE CAST TO THE FINISH GRADE UNLESS OTHERWISE SPECIFIED.

5.10. THE INLET & OUTFALL SHALL BE CAST TO THE FINISH GRADE UNLESS OTHERWISE SPECIFIED.

SECTION 6 - THREE RIVE FOR OVERSIZED METAL PIPE OUTFALL

6.1. THREE RIVE FOR OVERSIZED METAL PIPE OUTFALL SHALL BE CAST TO THE FINISH GRADE UNLESS OTHERWISE SPECIFIED.

6.2. THE OUTFALL SHALL BE CAST TO THE FINISH GRADE UNLESS OTHERWISE SPECIFIED.

6.3. THE OUTFALL SHALL BE CAST TO THE FINISH GRADE UNLESS OTHERWISE SPECIFIED.

6.4. THE OUTFALL SHALL BE CAST TO THE FINISH GRADE UNLESS OTHERWISE SPECIFIED.

6.5. THE OUTFALL SHALL BE CAST TO THE FINISH GRADE UNLESS OTHERWISE SPECIFIED.

6.6. THE OUTFALL SHALL BE CAST TO THE FINISH GRADE UNLESS OTHERWISE SPECIFIED.

6.7. THE OUTFALL SHALL BE CAST TO THE FINISH GRADE UNLESS OTHERWISE SPECIFIED.

6.8. THE OUTFALL SHALL BE CAST TO THE FINISH GRADE UNLESS OTHERWISE SPECIFIED.

6.9. THE OUTFALL SHALL BE CAST TO THE FINISH GRADE UNLESS OTHERWISE SPECIFIED.

6.10. THE OUTFALL SHALL BE CAST TO THE FINISH GRADE UNLESS OTHERWISE SPECIFIED.

SECTION 7 - INLET DETAIL

7.1. INLET DETAIL SHALL BE CAST TO THE FINISH GRADE UNLESS OTHERWISE SPECIFIED.

7.2. THE INLET DETAIL SHALL BE CAST TO THE FINISH GRADE UNLESS OTHERWISE SPECIFIED.

7.3. THE INLET DETAIL SHALL BE CAST TO THE FINISH GRADE UNLESS OTHERWISE SPECIFIED.

7.4. THE INLET DETAIL SHALL BE CAST TO THE FINISH GRADE UNLESS OTHERWISE SPECIFIED.

7.5. THE INLET DETAIL SHALL BE CAST TO THE FINISH GRADE UNLESS OTHERWISE SPECIFIED.

7.6. THE INLET DETAIL SHALL BE CAST TO THE FINISH GRADE UNLESS OTHERWISE SPECIFIED.

7.7. THE INLET DETAIL SHALL BE CAST TO THE FINISH GRADE UNLESS OTHERWISE SPECIFIED.

7.8. THE INLET DETAIL SHALL BE CAST TO THE FINISH GRADE UNLESS OTHERWISE SPECIFIED.

7.9. THE INLET DETAIL SHALL BE CAST TO THE FINISH GRADE UNLESS OTHERWISE SPECIFIED.

7.10. THE INLET DETAIL SHALL BE CAST TO THE FINISH GRADE UNLESS OTHERWISE SPECIFIED.

SECTION 8 - INLET DETAIL

8.1. INLET DETAIL SHALL BE CAST TO THE FINISH GRADE UNLESS OTHERWISE SPECIFIED.

8.2. THE INLET DETAIL SHALL BE CAST TO THE FINISH GRADE UNLESS OTHERWISE SPECIFIED.

8.3. THE INLET DETAIL SHALL BE CAST TO THE FINISH GRADE UNLESS OTHERWISE SPECIFIED.

8.4. THE INLET DETAIL SHALL BE CAST TO THE FINISH GRADE UNLESS OTHERWISE SPECIFIED.

8.5. THE INLET DETAIL SHALL BE CAST TO THE FINISH GRADE UNLESS OTHERWISE SPECIFIED.

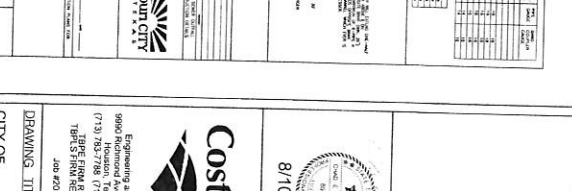
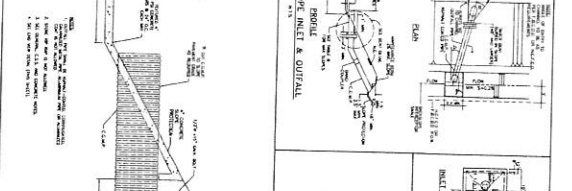
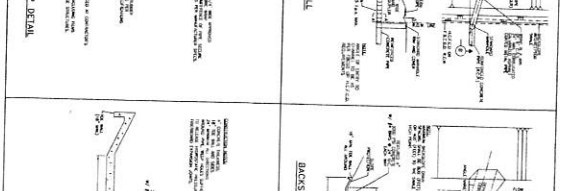
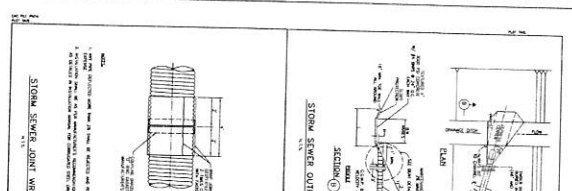
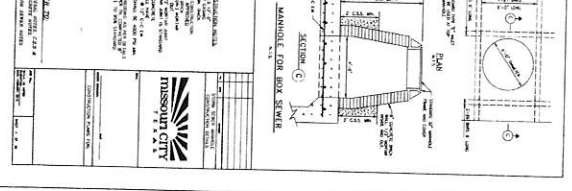
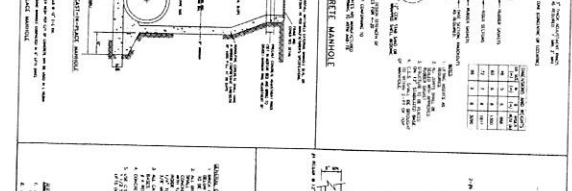
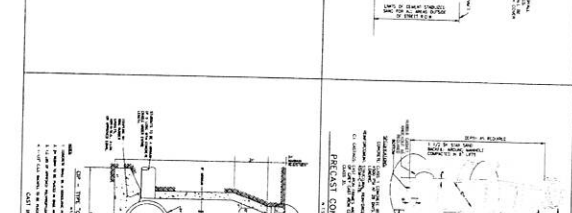
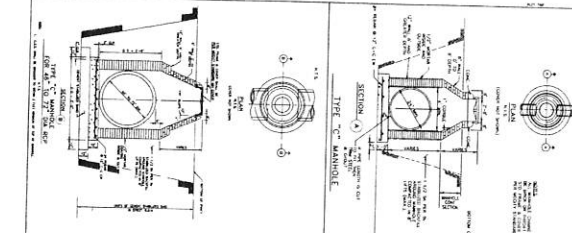
8.6. THE INLET DETAIL SHALL BE CAST TO THE FINISH GRADE UNLESS OTHERWISE SPECIFIED.

8.7. THE INLET DETAIL SHALL BE CAST TO THE FINISH GRADE UNLESS OTHERWISE SPECIFIED.

8.8. THE INLET DETAIL SHALL BE CAST TO THE FINISH GRADE UNLESS OTHERWISE SPECIFIED.

8.9. THE INLET DETAIL SHALL BE CAST TO THE FINISH GRADE UNLESS OTHERWISE SPECIFIED.

8.10. THE INLET DETAIL SHALL BE CAST TO THE FINISH GRADE UNLESS OTHERWISE SPECIFIED.



MISSOURI CITY

ENGINEER: [Signature]

DATE: 8/27/16

Costello

8/10/16

ENGINEERING AND SURVEYING

9909 Richmond Avenue, Suite 450 N

HOUSTON, TEXAS 77032

(713) 781-7000 FAX

18015 FRANKS, NO. 288

18015 FRANKS, NO. 288

JOB NO. 2015-04

CITY OF MISSOURI CITY

DETAILS - 01

DRAWING TITLE

SHEET C.14

INSPIRED LIVING HOUSTON

8/10/16

ENGINEERING AND SURVEYING

9909 Richmond Avenue, Suite 450 N

HOUSTON, TEXAS 77032

(713) 781-7000 FAX

18015 FRANKS, NO. 288

18015 FRANKS, NO. 288

JOB NO. 2015-04

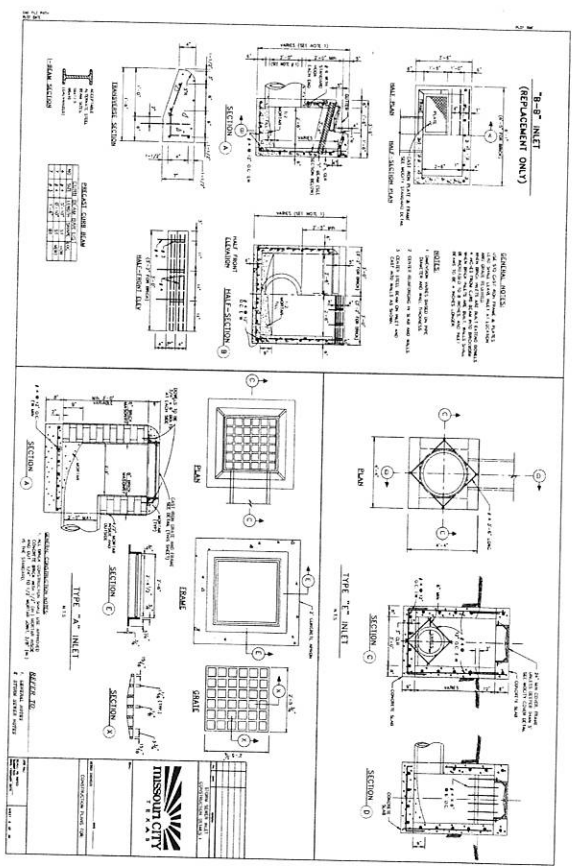
CITY OF MISSOURI CITY

DETAILS - 01

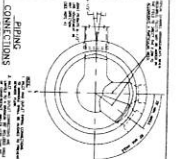
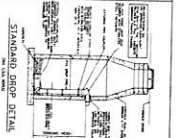
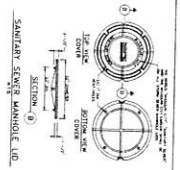
DRAWING TITLE

SHEET C.14

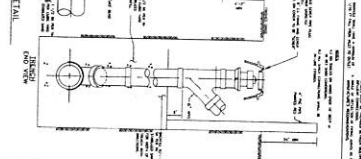
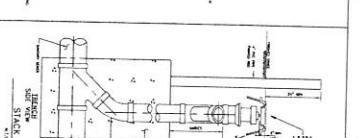
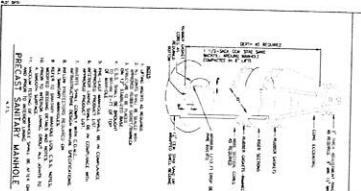
**76-IN. INLET
(REPLACEMENT ONLY)**



MISSOURI CITY
CONSTRUCTION DEPARTMENT
1000 WEST 10TH STREET
MISSOURI CITY, TEXAS 75455
TEL: 281-553-2200
FAX: 281-553-2201
WWW.MISSOURICITYTX.GOV

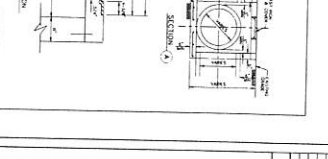
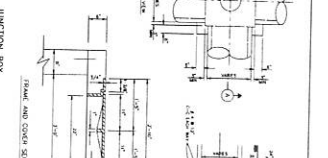
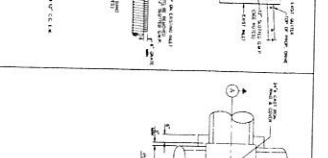
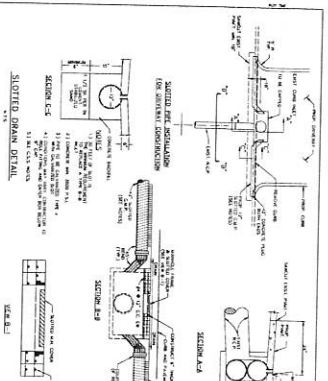


GENERAL NOTES:
1. ALL MATERIALS SHALL BE AS SHOWN OR APPROVED BY THE ENGINEER.
2. ALL WORK SHALL BE IN ACCORDANCE WITH THE MISSOURI CITY STANDARD SPECIFICATIONS FOR CONSTRUCTION.
3. THE CONTRACTOR SHALL BE RESPONSIBLE FOR OBTAINING ALL NECESSARY PERMITS.
4. THE CONTRACTOR SHALL MAINTAIN ACCESS TO ALL UTILITIES AND ADJACENT PROPERTIES.
5. ALL EXCAVATIONS SHALL BE PROTECTED AND SHORED.
6. ALL WORK SHALL BE COMPLETED WITHIN THE SPECIFIED TIME FRAME.
7. THE CONTRACTOR SHALL MAINTAIN A NEAT AND SAFE WORK SITE.
8. ALL MATERIALS SHALL BE STORED PROPERLY.
9. ALL WASTE SHALL BE PROPERLY DISPOSED.
10. ALL WORK SHALL BE SUBJECT TO INSPECTION AND APPROVAL BY THE ENGINEER.



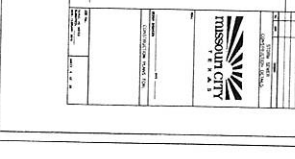
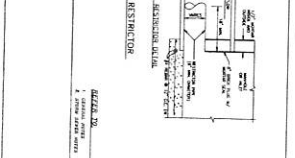
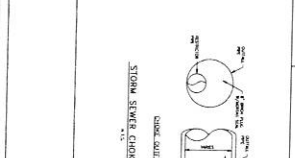
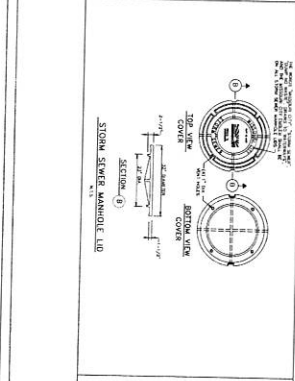
GENERAL NOTES:
1. ALL MATERIALS SHALL BE AS SHOWN OR APPROVED BY THE ENGINEER.
2. ALL WORK SHALL BE IN ACCORDANCE WITH THE MISSOURI CITY STANDARD SPECIFICATIONS FOR CONSTRUCTION.
3. THE CONTRACTOR SHALL BE RESPONSIBLE FOR OBTAINING ALL NECESSARY PERMITS.
4. THE CONTRACTOR SHALL MAINTAIN ACCESS TO ALL UTILITIES AND ADJACENT PROPERTIES.
5. ALL EXCAVATIONS SHALL BE PROTECTED AND SHORED.
6. ALL WORK SHALL BE COMPLETED WITHIN THE SPECIFIED TIME FRAME.
7. THE CONTRACTOR SHALL MAINTAIN A NEAT AND SAFE WORK SITE.
8. ALL MATERIALS SHALL BE STORED PROPERLY.
9. ALL WASTE SHALL BE PROPERLY DISPOSED.
10. ALL WORK SHALL BE SUBJECT TO INSPECTION AND APPROVAL BY THE ENGINEER.

MISSOURI CITY
CONSTRUCTION DEPARTMENT
1000 WEST 10TH STREET
MISSOURI CITY, TEXAS 75455
TEL: 281-553-2200
FAX: 281-553-2201
WWW.MISSOURICITYTX.GOV



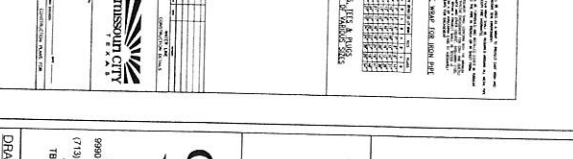
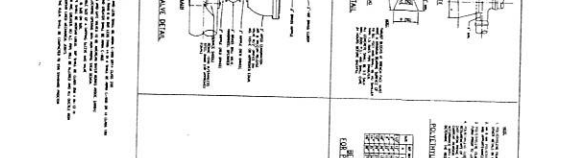
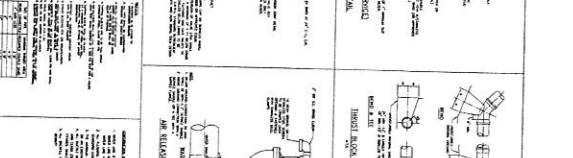
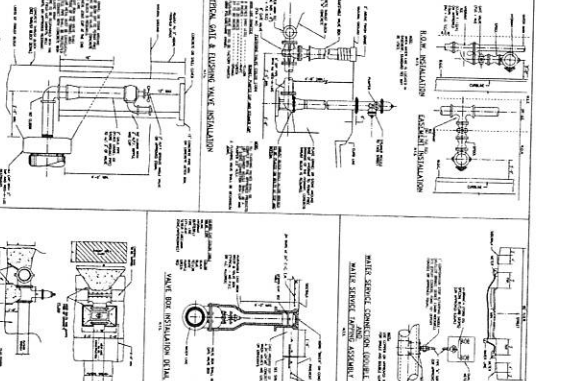
GENERAL NOTES:
1. ALL MATERIALS SHALL BE AS SHOWN OR APPROVED BY THE ENGINEER.
2. ALL WORK SHALL BE IN ACCORDANCE WITH THE MISSOURI CITY STANDARD SPECIFICATIONS FOR CONSTRUCTION.
3. THE CONTRACTOR SHALL BE RESPONSIBLE FOR OBTAINING ALL NECESSARY PERMITS.
4. THE CONTRACTOR SHALL MAINTAIN ACCESS TO ALL UTILITIES AND ADJACENT PROPERTIES.
5. ALL EXCAVATIONS SHALL BE PROTECTED AND SHORED.
6. ALL WORK SHALL BE COMPLETED WITHIN THE SPECIFIED TIME FRAME.
7. THE CONTRACTOR SHALL MAINTAIN A NEAT AND SAFE WORK SITE.
8. ALL MATERIALS SHALL BE STORED PROPERLY.
9. ALL WASTE SHALL BE PROPERLY DISPOSED.
10. ALL WORK SHALL BE SUBJECT TO INSPECTION AND APPROVAL BY THE ENGINEER.

MISSOURI CITY
CONSTRUCTION DEPARTMENT
1000 WEST 10TH STREET
MISSOURI CITY, TEXAS 75455
TEL: 281-553-2200
FAX: 281-553-2201
WWW.MISSOURICITYTX.GOV



GENERAL NOTES:
1. ALL MATERIALS SHALL BE AS SHOWN OR APPROVED BY THE ENGINEER.
2. ALL WORK SHALL BE IN ACCORDANCE WITH THE MISSOURI CITY STANDARD SPECIFICATIONS FOR CONSTRUCTION.
3. THE CONTRACTOR SHALL BE RESPONSIBLE FOR OBTAINING ALL NECESSARY PERMITS.
4. THE CONTRACTOR SHALL MAINTAIN ACCESS TO ALL UTILITIES AND ADJACENT PROPERTIES.
5. ALL EXCAVATIONS SHALL BE PROTECTED AND SHORED.
6. ALL WORK SHALL BE COMPLETED WITHIN THE SPECIFIED TIME FRAME.
7. THE CONTRACTOR SHALL MAINTAIN A NEAT AND SAFE WORK SITE.
8. ALL MATERIALS SHALL BE STORED PROPERLY.
9. ALL WASTE SHALL BE PROPERLY DISPOSED.
10. ALL WORK SHALL BE SUBJECT TO INSPECTION AND APPROVAL BY THE ENGINEER.

MISSOURI CITY
CONSTRUCTION DEPARTMENT
1000 WEST 10TH STREET
MISSOURI CITY, TEXAS 75455
TEL: 281-553-2200
FAX: 281-553-2201
WWW.MISSOURICITYTX.GOV



GENERAL NOTES:
1. ALL MATERIALS SHALL BE AS SHOWN OR APPROVED BY THE ENGINEER.
2. ALL WORK SHALL BE IN ACCORDANCE WITH THE MISSOURI CITY STANDARD SPECIFICATIONS FOR CONSTRUCTION.
3. THE CONTRACTOR SHALL BE RESPONSIBLE FOR OBTAINING ALL NECESSARY PERMITS.
4. THE CONTRACTOR SHALL MAINTAIN ACCESS TO ALL UTILITIES AND ADJACENT PROPERTIES.
5. ALL EXCAVATIONS SHALL BE PROTECTED AND SHORED.
6. ALL WORK SHALL BE COMPLETED WITHIN THE SPECIFIED TIME FRAME.
7. THE CONTRACTOR SHALL MAINTAIN A NEAT AND SAFE WORK SITE.
8. ALL MATERIALS SHALL BE STORED PROPERLY.
9. ALL WASTE SHALL BE PROPERLY DISPOSED.
10. ALL WORK SHALL BE SUBJECT TO INSPECTION AND APPROVAL BY THE ENGINEER.

MISSOURI CITY
CONSTRUCTION DEPARTMENT
1000 WEST 10TH STREET
MISSOURI CITY, TEXAS 75455
TEL: 281-553-2200
FAX: 281-553-2201
WWW.MISSOURICITYTX.GOV

NO.	DATE	BY	REVISION
1	8/10/16	MS	ISSUED FOR PERMIT
2			
3			
4			
5			
6			
7			
8			
9			
10			

INSPIRED LIVING HOUSTON

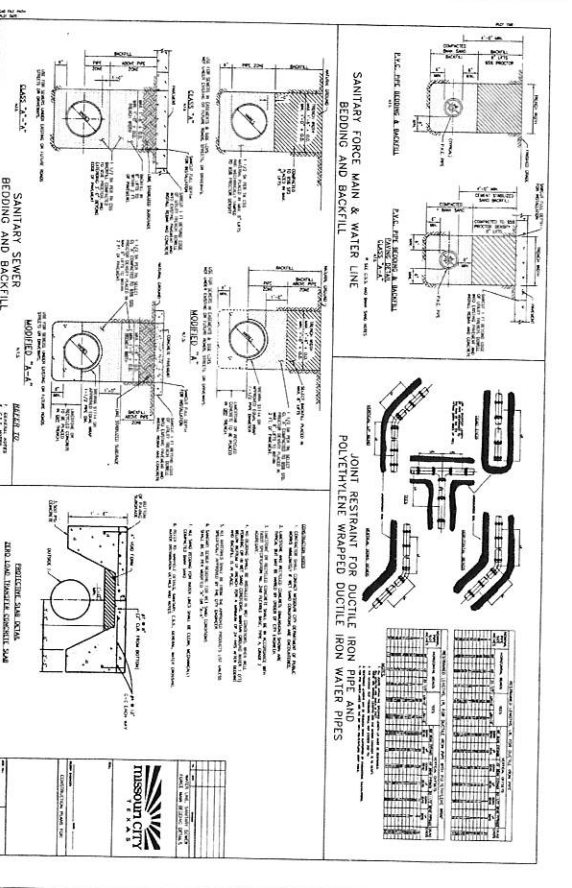
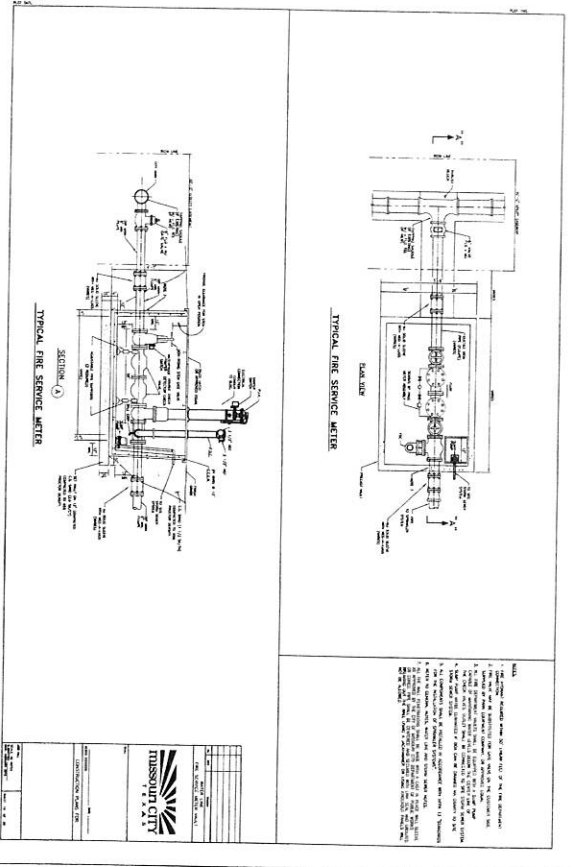
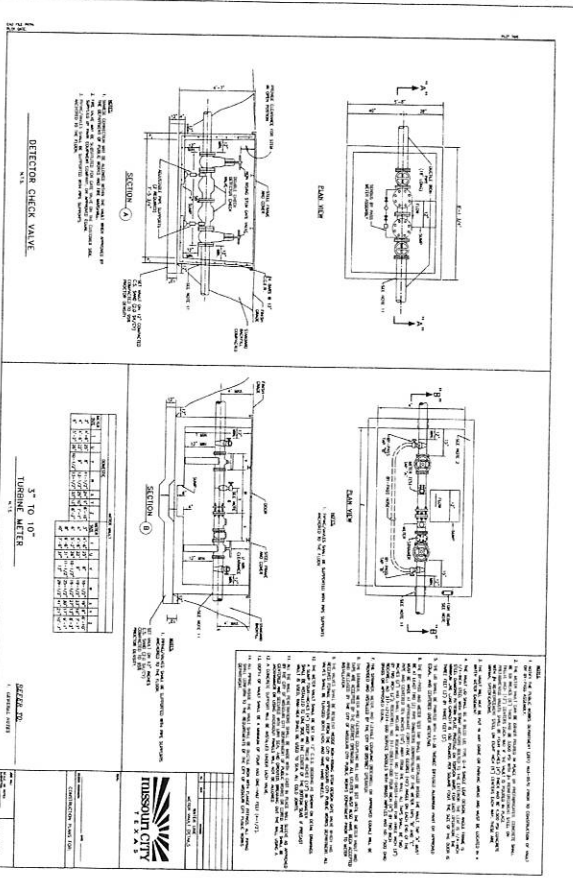
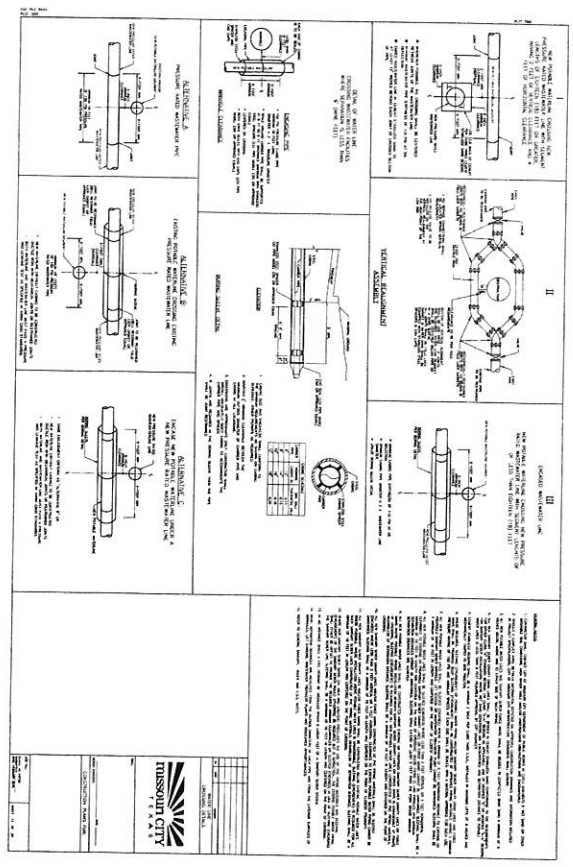


Costello
Engineering and Surveying
9909 Richmond Avenue, Suite 450 N
Houston, TX 77036
(713) 783-7788 (713) 783-5860 FAX
TPE@COSTELLO.ENG No. 280
TPE@S.FORREC.COM No. 100566
Jed 42015184

8/10/16



CITY OF MISSOURI CITY
DETAILS - 02
DRAWING TITLE
SHEET C.15



NO.	DATE	REVISION

INSPIRED LIVING HOUSTON

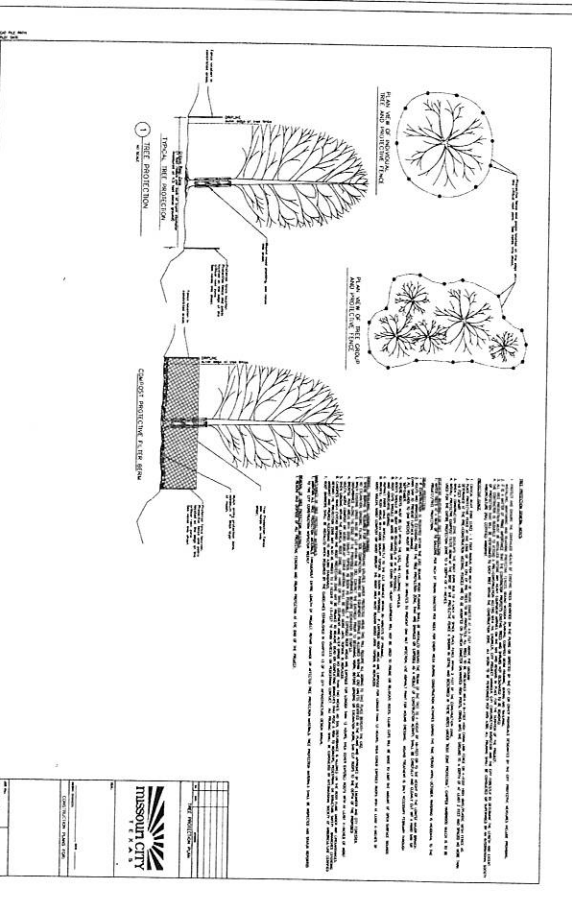
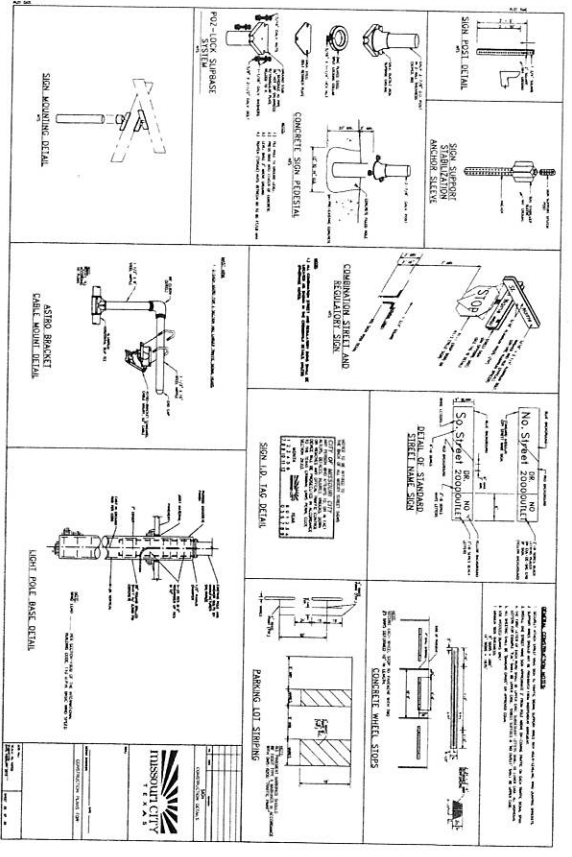
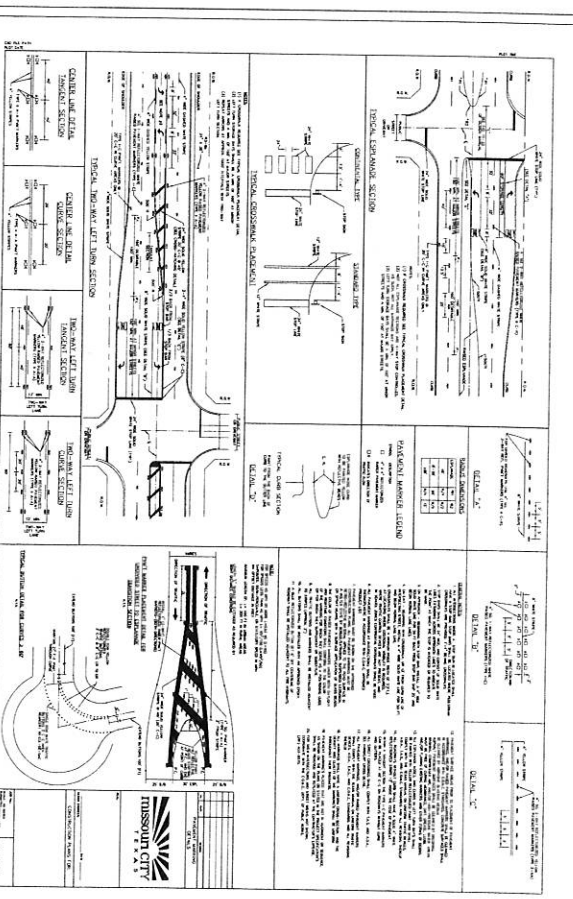
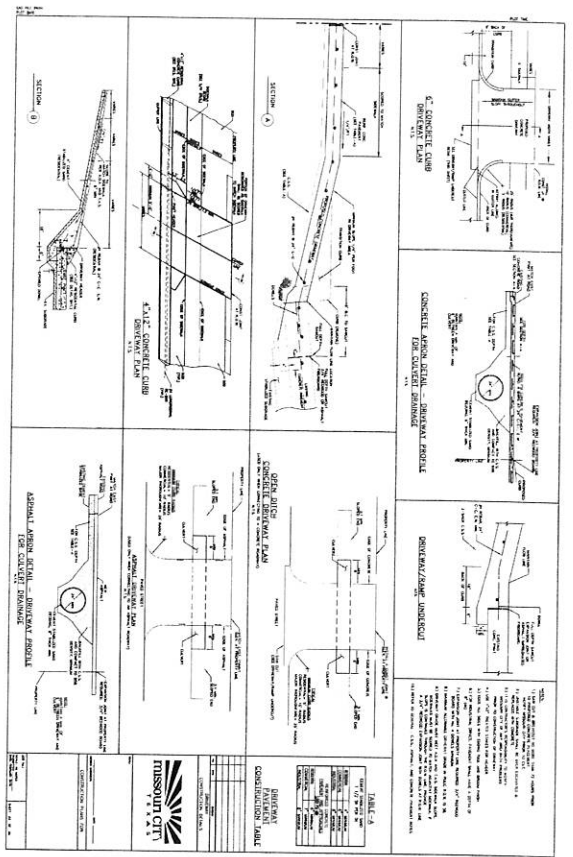


8/10/16



Costello
 Engineering and Surveying
 9999 Richmond Avenue, Suite 450 N
 (713) 782-7788 (713) 783-3880 Fax
 T8855 FRENCH, No. 28288
 JAB 8291304

DRAWING TITLE
 CITY OF MISSOURI CITY
 DETAILS - 03
 SHEET C.16



NO.	DATE	DESCRIPTION
1	8/10/16	ISSUED FOR PERMIT
2	8/10/16	ISSUED FOR CONSTRUCTION

DESIGNER
 CONSULTANT
 CONTRACTOR

INSPIRED LIVING HOUSTON

8/10/16



Engineering and Surveying
 9999
 Houston, Texas 77054
 (713) 783-7788 (713) 783-3380 Fax
 1800 FARM AVE. #400
 Houston, Texas 77054
 JAB 8010184

DRAWING TITLE
 CITY OF MISSOURI CITY
 DETAILS - 05
 SHEET C.18