

**REVIEW BY FORT BEND COUNTY COMMISSIONERS COURT**


On this 25th day of October, 2016, Commissioners Court came on to be heard and reviewed the accompanying notice of Mohle Crawford Design/Build Inc Job Location 1661 Blaisdale Road, Richmond, TX 77406 Date Bond No. 418380, Permit No. 2016-9429 to make use of certain Fort Bend County property subject to, "A Revised Order Regulating the Laying, Construction, Maintenance, and Repair of Buried Cables, Conduits, and Pole Lines, In, Under, Across or Along Roads, Streets, Highways, and Drainage Ditches in Fort Bend County, Texas, Under the Jurisdiction of the Commissioners Court of Fort Bend County, Texas," as passed by the Commissioners Court of Fort Bend County, Texas the 3rd day of August, 1987, recorded in Volume \_\_\_\_\_ of the Minutes of the Commissioners Court of Fort Bend County, Texas, to the extent that such order is not inconsistent with Article 1436a, Vernon's Texas Civil Statutes. Upon Motion of Commissioner \_\_\_\_\_, seconded by Commissioner \_\_\_\_\_, duly put and carried, it is ORDERED, ADJUDGED AND DECREED that said notice of said above purpose is hereby acknowledged by the Commissioners Court of Fort Bend County, Texas, and that said notice be placed on record according to the regulation order thereof.

Notes:

1. Evidence of review by the Commissioners Court must be kept on the job site and failure to do so constitutes grounds for job shutdown.
2. Written notices are required:
  - a. 48 hours in advance of construction start up, and
  - b. when construction is completed and ready for final inspection

Mail notices to: Permit Administrator  
Fort Bend County Engineering  
301 Jackson Street  
Richmond, Texas 77469  
281-633-7500

3. This permit expires one (1) year from date of permit if construction has not commenced.

By:   
County Engineer

Presented to Commissioners Court and approved.  
Recorded in Volume \_\_\_\_\_

By: N/A  
Drainage District Engineer/Manager

Minutes of Commissioners Court

Clerk of Commissioners Court

By: \_\_\_\_\_  
Deputy

**County of Fort Bend**  
Engineering Department

301 Jackson Street  
Richmond, Texas 77469

Phone: (281) 633-7500

**Permit Application Review Form For  
Cable, Conduit, and Pole Line Activity  
In Fort Bend County**

Permit No. 2016-9429

The following "Notice of Proposed Cable, Conduit, and/or Pole Line activity in Fort Bend County" and accompanying attachments have been reviewed and the notice conforms to appropriate regulations set by Commissioner's Court of Fort Bend County, Texas.

- (1) Complete Application Form:
- a. Name of road, street, and/or drainage ditch affected.
  - b. Vicinity map showing course of directions
  - c. Plans and specifications
- (2) Bond:
- District Attorney, approval when applicable.  
Perpetual bond currently posted.
- No: \_\_\_\_\_  
Amount: \_\_\_\_\_  
Performance bond submitted.
- No: \_\_\_\_\_  
Amount: \_\_\_\_\_
- Cashier's Check
- No: 418380  
Amount: \$5,000.00

(3) Verbal permission given for emergencies, to start construction before approved in Commissioner's Court.

\_\_\_\_\_  
Precinct Engineer Acknowledgment \_\_\_\_\_  
Date

\_\_\_\_\_  
Precinct Commissioner Acknowledgment \_\_\_\_\_  
Date

(4)  
\_\_\_\_\_  
Drainage District Approval when applicable

**We have reviewed this project and agree it meets minimum requirements.**

  
\_\_\_\_\_  
Assistant County Engineer

10/17/16  
\_\_\_\_\_  
Date

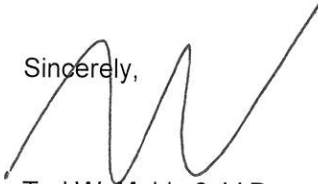
September 1, 2016

**RE:** 1661 Blaisdale Road  
Richmond, TX 77406  
APP-921

Fort Bend County:

We have called the West Ford Bend Management District on 09/01/16. They stated they are only handling the plumbing. They will be working with subcontractors Ramco and Available Plumbing on the inside and outside plumbing.

Sincerely,



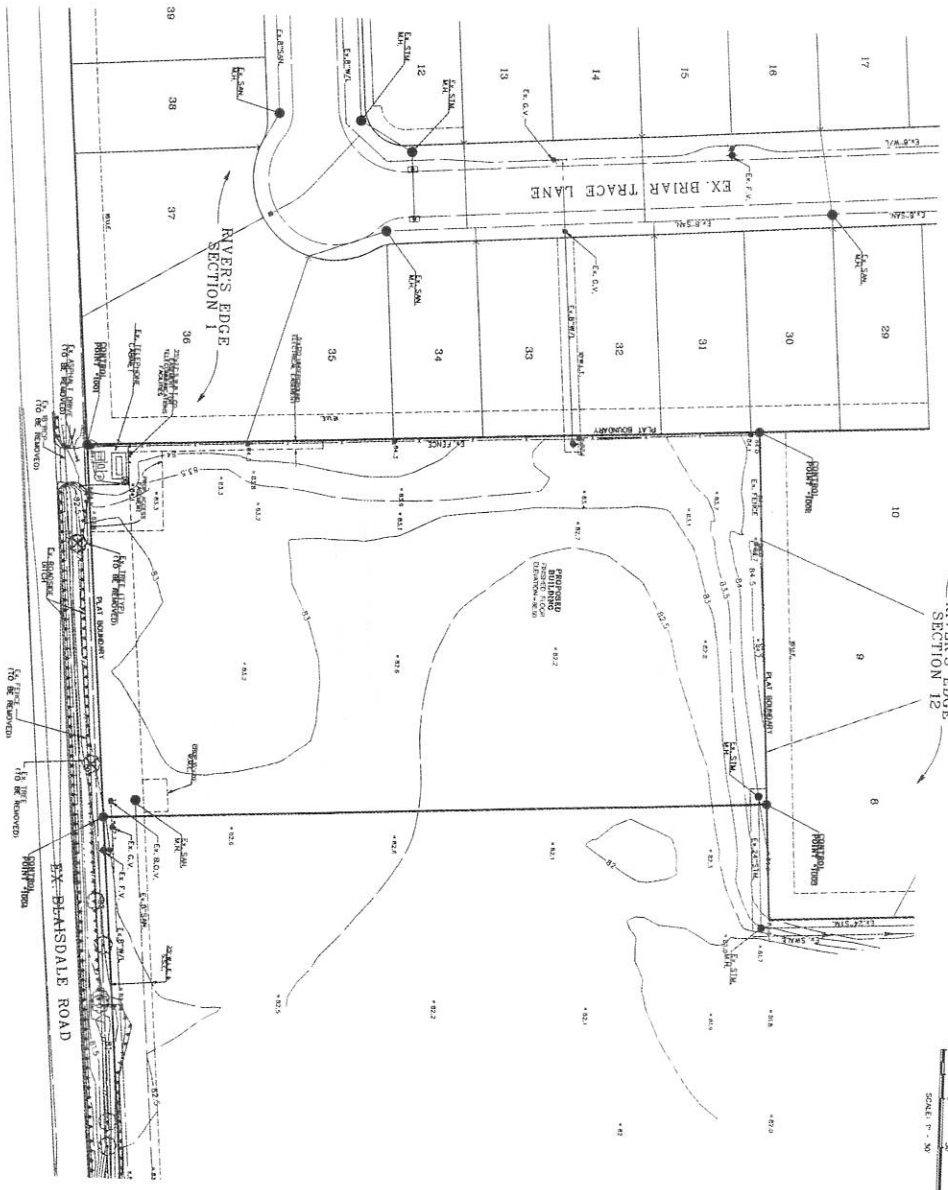
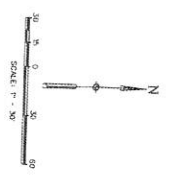
Ted W. Mohle 3, V.P.  
mohlecrawford/designbuildingc  
tw@mohleddesign.com

cc: Steve L. Crawford, Pres.  
mohlecrawford/designbuildingc  
scrawford1254@mac.com

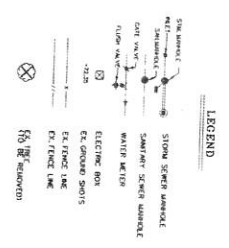




CRAWFORD, WICHITA COUNTY, OKLAHOMA, SECTION 15, RANGE 16 NORTH, MERIDIAN 10 WEST. T15N 16W 15E. DATE: 2014-11-11. THE PROJECT IS A GYMNASIUM BUILDING. THE PROJECT IS A GYMNASIUM BUILDING. THE PROJECT IS A GYMNASIUM BUILDING. ELEVATION = 5,000 FEET.



Sheet ID	CONTROLLING SHEET
1000	1000
1001	1000
1002	1000
1003	1000
1004	1000
1005	1000
1006	1000
1007	1000
1008	1000
1009	1000
1010	1000



1. THE CONTROLLING SHEET SHALL BE REFERRED TO FOR ALL INFORMATION RELATIVE TO THE PROJECT.
2. CHANGES MADE TO THE PROJECT SHALL BE INDICATED BY A REVISION TABLE.
3. THE PROJECT IS A GYMNASIUM BUILDING.
4. THE CONTRACTOR SHALL BE RESPONSIBLE FOR OBTAINING ALL NECESSARY PERMITS AND APPROVALS FROM THE LOCAL, STATE, AND FEDERAL AUTHORITIES.

APPROVED:   
DATE: 11/11/14

# CRAWFORD

## GYMNASIUM BUILDING

RICHMOND  
TEXAS

PROJECT NUMBER: DA 21005.00  
DRAWING ISSUE SCHEDULE  
DATE:

### TOPOGRAPHIC LAYOUT

# C1.2

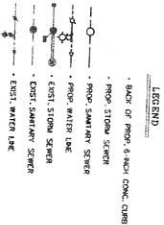
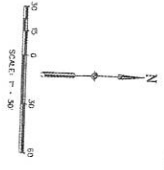
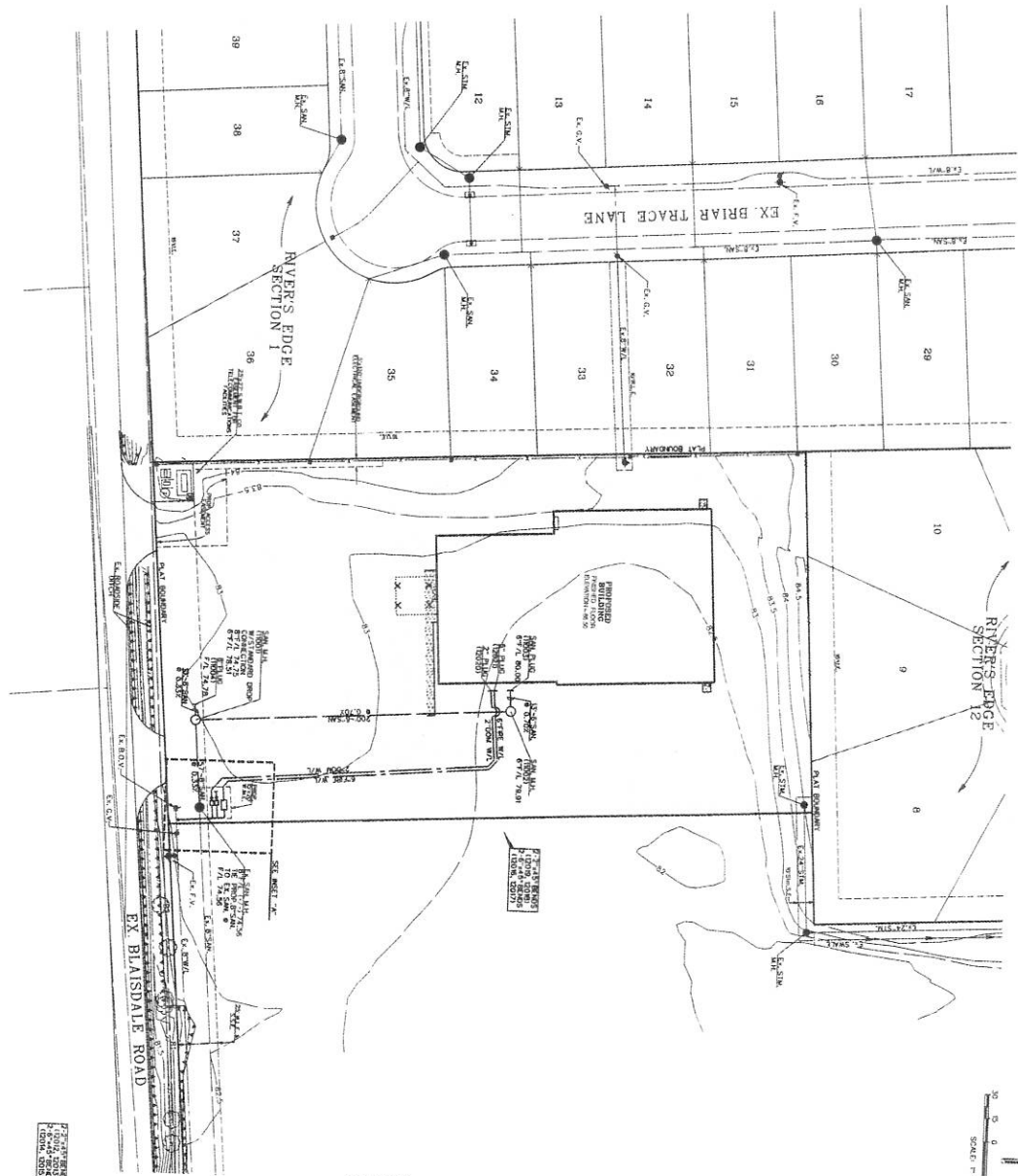
CRAWFORD, TEXAS  
 PLAT 2014-001-11  
 THE PUBLIC RECORDS OFFICE OF TARRANT COUNTY, TEXAS  
 REC'D FOR RECORDING 04/11/2014 10:58 AM  
 PLAT NUMBER 2014-001-11

**CRAWFORD**

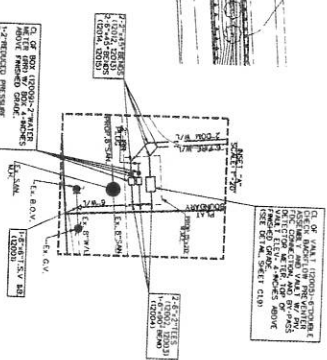
**GYMNASTICS BUILDING**

**RICHMOND TEXAS**

PROJECT NUMBER: DA 21080-00  
 DRAWING ISSUE SCHEDULE  
 DATE



- NOTES**
1. CONNECTOR SHALL BE TO EXISTING SANITARY MANHOLE BY CONC. W/REIN.
  2. REFERENCE SEE DRAWINGS FOR EXIST. UTILITY LOCATIONS.
  3. THINWALL MANHOLE TOP W.C. 4.0 FEET BELOW FINISHED GRADE.



APPROVED: [Signature]  
 DATE: 11/11/14



**WATER AND SANITARY LAYOUT**

**C1.3**

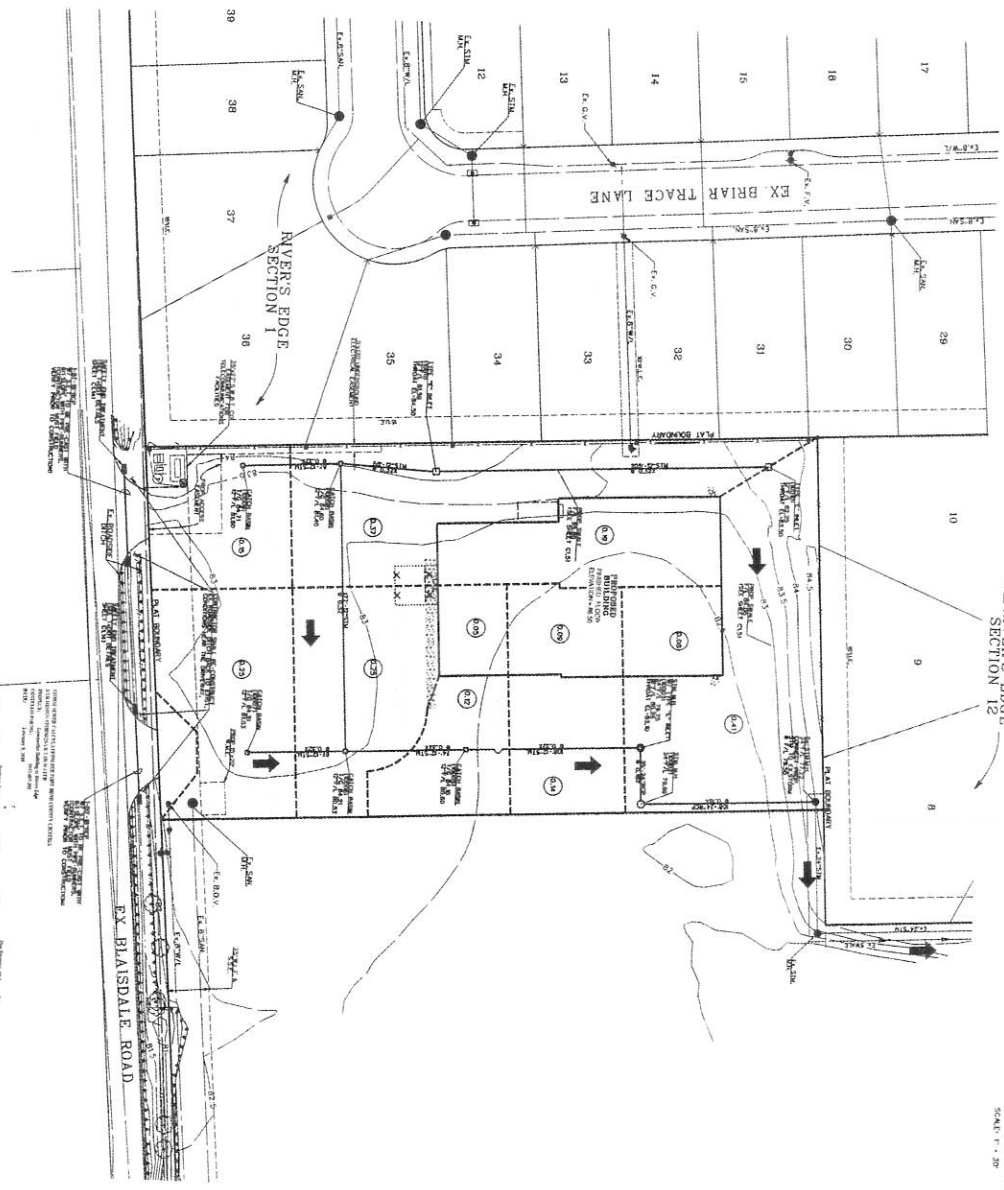
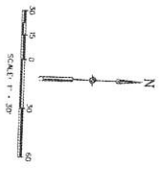
# CRAWFORD

## GYMNASTICS BUILDING

RICHMOND TEXAS

PROJECT NUMBER: 08-2106-00  
 DRAWING ISSUE SCHEDULE  
 DATE:

CONTR. BY: CRAWFORD  
 DATE: 08-21-11  
 DRAWING NO: 08-2106-00  
 SHEET NO: 08-2106-00-01  
 PROJECT: GYMNASIUM BUILDING  
 LOCATION: 1200 S. BLAISDALE ROAD, RICHMOND, TEXAS  
 ELEVATION: 540.00  
 SHEET NUMBER: 08-2106-00-01



- LEGEND**
- 6" OR 8" RIBBON CONCRETE CURB
  - 12" RIBBON CONCRETE CURB
  - 18" RIBBON CONCRETE CURB
  - 24" RIBBON CONCRETE CURB
  - 30" RIBBON CONCRETE CURB
  - 36" RIBBON CONCRETE CURB
  - 42" RIBBON CONCRETE CURB
  - 48" RIBBON CONCRETE CURB
  - 54" RIBBON CONCRETE CURB
  - 60" RIBBON CONCRETE CURB
  - 66" RIBBON CONCRETE CURB
  - 72" RIBBON CONCRETE CURB
  - 78" RIBBON CONCRETE CURB
  - 84" RIBBON CONCRETE CURB
  - 90" RIBBON CONCRETE CURB
  - 96" RIBBON CONCRETE CURB
  - 102" RIBBON CONCRETE CURB
  - 108" RIBBON CONCRETE CURB
  - 114" RIBBON CONCRETE CURB
  - 120" RIBBON CONCRETE CURB
  - 126" RIBBON CONCRETE CURB
  - 132" RIBBON CONCRETE CURB
  - 138" RIBBON CONCRETE CURB
  - 144" RIBBON CONCRETE CURB
  - 150" RIBBON CONCRETE CURB
  - 156" RIBBON CONCRETE CURB
  - 162" RIBBON CONCRETE CURB
  - 168" RIBBON CONCRETE CURB
  - 174" RIBBON CONCRETE CURB
  - 180" RIBBON CONCRETE CURB
  - 186" RIBBON CONCRETE CURB
  - 192" RIBBON CONCRETE CURB
  - 198" RIBBON CONCRETE CURB
  - 204" RIBBON CONCRETE CURB
  - 210" RIBBON CONCRETE CURB
  - 216" RIBBON CONCRETE CURB
  - 222" RIBBON CONCRETE CURB
  - 228" RIBBON CONCRETE CURB
  - 234" RIBBON CONCRETE CURB
  - 240" RIBBON CONCRETE CURB
  - 246" RIBBON CONCRETE CURB
  - 252" RIBBON CONCRETE CURB
  - 258" RIBBON CONCRETE CURB
  - 264" RIBBON CONCRETE CURB
  - 270" RIBBON CONCRETE CURB
  - 276" RIBBON CONCRETE CURB
  - 282" RIBBON CONCRETE CURB
  - 288" RIBBON CONCRETE CURB
  - 294" RIBBON CONCRETE CURB
  - 300" RIBBON CONCRETE CURB
  - 306" RIBBON CONCRETE CURB
  - 312" RIBBON CONCRETE CURB
  - 318" RIBBON CONCRETE CURB
  - 324" RIBBON CONCRETE CURB
  - 330" RIBBON CONCRETE CURB
  - 336" RIBBON CONCRETE CURB
  - 342" RIBBON CONCRETE CURB
  - 348" RIBBON CONCRETE CURB
  - 354" RIBBON CONCRETE CURB
  - 360" RIBBON CONCRETE CURB
  - 366" RIBBON CONCRETE CURB
  - 372" RIBBON CONCRETE CURB
  - 378" RIBBON CONCRETE CURB
  - 384" RIBBON CONCRETE CURB
  - 390" RIBBON CONCRETE CURB
  - 396" RIBBON CONCRETE CURB
  - 402" RIBBON CONCRETE CURB
  - 408" RIBBON CONCRETE CURB
  - 414" RIBBON CONCRETE CURB
  - 420" RIBBON CONCRETE CURB
  - 426" RIBBON CONCRETE CURB
  - 432" RIBBON CONCRETE CURB
  - 438" RIBBON CONCRETE CURB
  - 444" RIBBON CONCRETE CURB
  - 450" RIBBON CONCRETE CURB
  - 456" RIBBON CONCRETE CURB
  - 462" RIBBON CONCRETE CURB
  - 468" RIBBON CONCRETE CURB
  - 474" RIBBON CONCRETE CURB
  - 480" RIBBON CONCRETE CURB
  - 486" RIBBON CONCRETE CURB
  - 492" RIBBON CONCRETE CURB
  - 498" RIBBON CONCRETE CURB
  - 504" RIBBON CONCRETE CURB
  - 510" RIBBON CONCRETE CURB
  - 516" RIBBON CONCRETE CURB
  - 522" RIBBON CONCRETE CURB
  - 528" RIBBON CONCRETE CURB
  - 534" RIBBON CONCRETE CURB
  - 540" RIBBON CONCRETE CURB
  - 546" RIBBON CONCRETE CURB
  - 552" RIBBON CONCRETE CURB
  - 558" RIBBON CONCRETE CURB
  - 564" RIBBON CONCRETE CURB
  - 570" RIBBON CONCRETE CURB
  - 576" RIBBON CONCRETE CURB
  - 582" RIBBON CONCRETE CURB
  - 588" RIBBON CONCRETE CURB
  - 594" RIBBON CONCRETE CURB
  - 600" RIBBON CONCRETE CURB
  - 606" RIBBON CONCRETE CURB
  - 612" RIBBON CONCRETE CURB
  - 618" RIBBON CONCRETE CURB
  - 624" RIBBON CONCRETE CURB
  - 630" RIBBON CONCRETE CURB
  - 636" RIBBON CONCRETE CURB
  - 642" RIBBON CONCRETE CURB
  - 648" RIBBON CONCRETE CURB
  - 654" RIBBON CONCRETE CURB
  - 660" RIBBON CONCRETE CURB
  - 666" RIBBON CONCRETE CURB
  - 672" RIBBON CONCRETE CURB
  - 678" RIBBON CONCRETE CURB
  - 684" RIBBON CONCRETE CURB
  - 690" RIBBON CONCRETE CURB
  - 696" RIBBON CONCRETE CURB
  - 702" RIBBON CONCRETE CURB
  - 708" RIBBON CONCRETE CURB
  - 714" RIBBON CONCRETE CURB
  - 720" RIBBON CONCRETE CURB
  - 726" RIBBON CONCRETE CURB
  - 732" RIBBON CONCRETE CURB
  - 738" RIBBON CONCRETE CURB
  - 744" RIBBON CONCRETE CURB
  - 750" RIBBON CONCRETE CURB
  - 756" RIBBON CONCRETE CURB
  - 762" RIBBON CONCRETE CURB
  - 768" RIBBON CONCRETE CURB
  - 774" RIBBON CONCRETE CURB
  - 780" RIBBON CONCRETE CURB
  - 786" RIBBON CONCRETE CURB
  - 792" RIBBON CONCRETE CURB
  - 798" RIBBON CONCRETE CURB
  - 804" RIBBON CONCRETE CURB
  - 810" RIBBON CONCRETE CURB
  - 816" RIBBON CONCRETE CURB
  - 822" RIBBON CONCRETE CURB
  - 828" RIBBON CONCRETE CURB
  - 834" RIBBON CONCRETE CURB
  - 840" RIBBON CONCRETE CURB
  - 846" RIBBON CONCRETE CURB
  - 852" RIBBON CONCRETE CURB
  - 858" RIBBON CONCRETE CURB
  - 864" RIBBON CONCRETE CURB
  - 870" RIBBON CONCRETE CURB
  - 876" RIBBON CONCRETE CURB
  - 882" RIBBON CONCRETE CURB
  - 888" RIBBON CONCRETE CURB
  - 894" RIBBON CONCRETE CURB
  - 900" RIBBON CONCRETE CURB
  - 906" RIBBON CONCRETE CURB
  - 912" RIBBON CONCRETE CURB
  - 918" RIBBON CONCRETE CURB
  - 924" RIBBON CONCRETE CURB
  - 930" RIBBON CONCRETE CURB
  - 936" RIBBON CONCRETE CURB
  - 942" RIBBON CONCRETE CURB
  - 948" RIBBON CONCRETE CURB
  - 954" RIBBON CONCRETE CURB
  - 960" RIBBON CONCRETE CURB
  - 966" RIBBON CONCRETE CURB
  - 972" RIBBON CONCRETE CURB
  - 978" RIBBON CONCRETE CURB
  - 984" RIBBON CONCRETE CURB
  - 990" RIBBON CONCRETE CURB
  - 996" RIBBON CONCRETE CURB
  - 1002" RIBBON CONCRETE CURB
  - 1008" RIBBON CONCRETE CURB
  - 1014" RIBBON CONCRETE CURB
  - 1020" RIBBON CONCRETE CURB
  - 1026" RIBBON CONCRETE CURB
  - 1032" RIBBON CONCRETE CURB
  - 1038" RIBBON CONCRETE CURB
  - 1044" RIBBON CONCRETE CURB
  - 1050" RIBBON CONCRETE CURB
  - 1056" RIBBON CONCRETE CURB
  - 1062" RIBBON CONCRETE CURB
  - 1068" RIBBON CONCRETE CURB
  - 1074" RIBBON CONCRETE CURB
  - 1080" RIBBON CONCRETE CURB
  - 1086" RIBBON CONCRETE CURB
  - 1092" RIBBON CONCRETE CURB
  - 1098" RIBBON CONCRETE CURB
  - 1104" RIBBON CONCRETE CURB
  - 1110" RIBBON CONCRETE CURB
  - 1116" RIBBON CONCRETE CURB
  - 1122" RIBBON CONCRETE CURB
  - 1128" RIBBON CONCRETE CURB
  - 1134" RIBBON CONCRETE CURB
  - 1140" RIBBON CONCRETE CURB
  - 1146" RIBBON CONCRETE CURB
  - 1152" RIBBON CONCRETE CURB
  - 1158" RIBBON CONCRETE CURB
  - 1164" RIBBON CONCRETE CURB
  - 1170" RIBBON CONCRETE CURB
  - 1176" RIBBON CONCRETE CURB
  - 1182" RIBBON CONCRETE CURB
  - 1188" RIBBON CONCRETE CURB
  - 1194" RIBBON CONCRETE CURB
  - 1200" RIBBON CONCRETE CURB

**NOTE:**  
 1. ALL STORM SEWER ARE 18" DIA. UNLESS OTHERWISE NOTED.  
 2. ALL MATCH LINES SHALL BE ADJUSTED TO MATCH THE DRAWING.  
 3. ALL MATCH LINES SHALL BE ADJUSTED TO MATCH THE DRAWING.  
 4. ALL MATCH LINES SHALL BE ADJUSTED TO MATCH THE DRAWING.  
 5. ALL MATCH LINES SHALL BE ADJUSTED TO MATCH THE DRAWING.

APPROVED: [Signature]  
 DATE: 11/11/11



DRAINAGE LAYOUT

C1.4

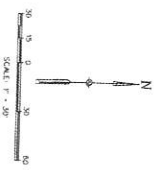
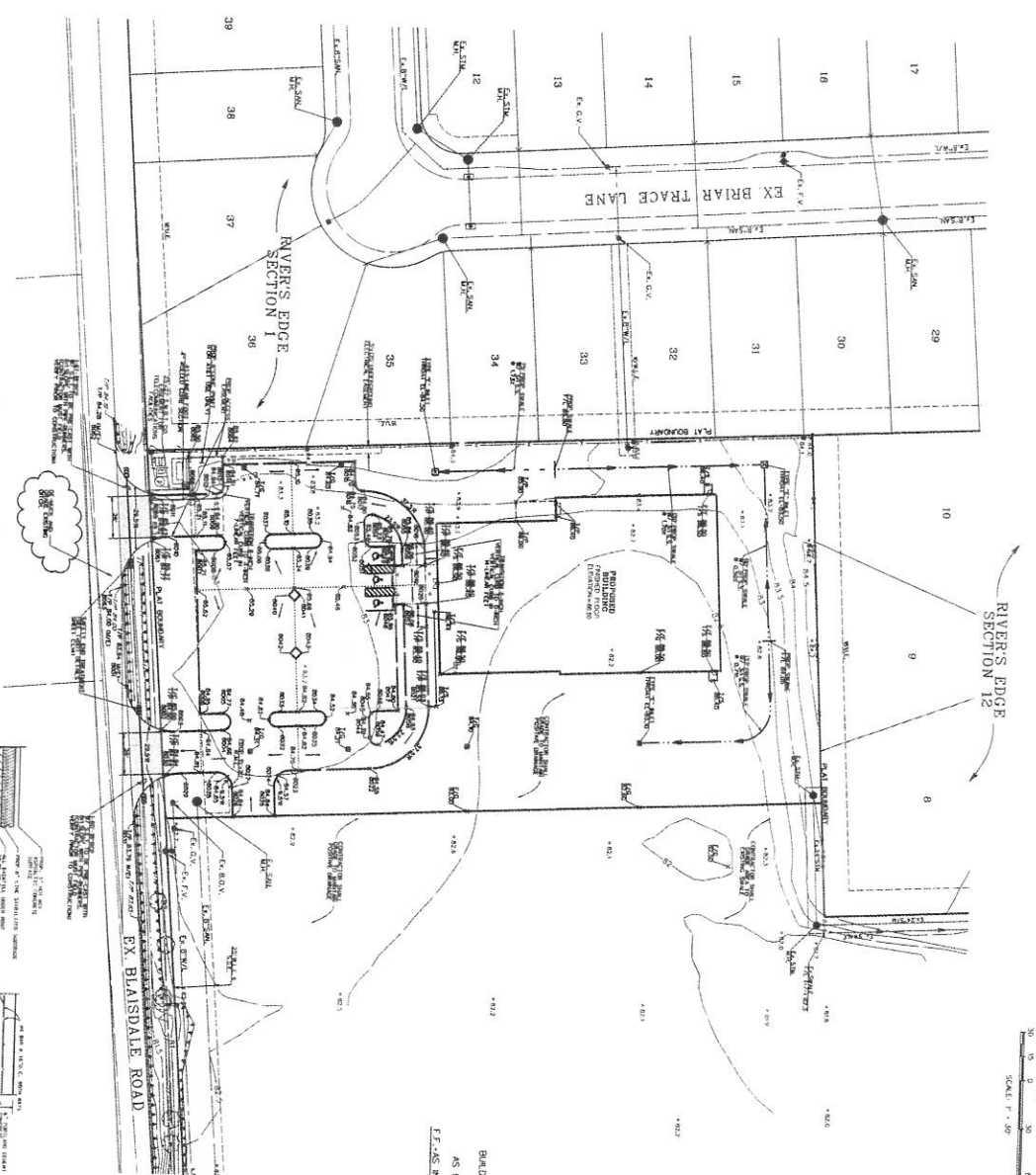
# CRAWFORD

## GYMNASTICS BUILDING

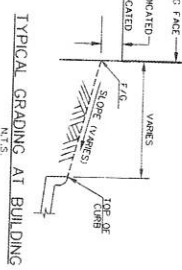
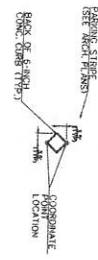
RICHMOND TEXAS

PROJECT NUMBER DB 21096.00  
DRAWING ISSUE SCHEDULE DATE

STATIONING: RICHMOND, TEXAS, MARKED HEREIN 22+91.00  
ELEVATION: 4551.00  
DATE: 07/11/11  
SCALE: 1" = 30'



1. CONSTRUCTION SHALL COMPLY WITH THE LATEST EDITION OF THE INTERNATIONAL BUILDING CODE (IBC) AND THE LATEST EDITION OF THE INTERNATIONAL RESIDENTIAL CODE (IRC).  
2. CONSTRUCTION SHALL COMPLY WITH THE LATEST EDITION OF THE INTERNATIONAL MECHANICAL, ELECTRICAL, AND PLUMBING CODE (IMC, EPC, AND UPC).  
3. CONSTRUCTION SHALL COMPLY WITH THE LATEST EDITION OF THE INTERNATIONAL FIRE AND SAFETY CODE (IFSC).



ALL WORK SHALL BE IN ACCORDANCE WITH THE LATEST EDITION OF THE INTERNATIONAL BUILDING CODE (IBC) AND THE LATEST EDITION OF THE INTERNATIONAL RESIDENTIAL CODE (IRC).  
ALL WORK SHALL BE IN ACCORDANCE WITH THE LATEST EDITION OF THE INTERNATIONAL MECHANICAL, ELECTRICAL, AND PLUMBING CODE (IMC, EPC, AND UPC).  
ALL WORK SHALL BE IN ACCORDANCE WITH THE LATEST EDITION OF THE INTERNATIONAL FIRE AND SAFETY CODE (IFSC).

CONCRETE SHALL BE 4000 PSI STRENGTH CONCRETE WITH 4% STEEL FIBERS.  
ASPHALT SHALL BE 58 GRADE ASPHALT.  
GRAVEL SHALL BE 3/4" MAXIMUM SIZE GRAVEL.  
SLOPE SHALL BE 2% MINIMUM.

APPROVED: [Signature]  
DATE: 07/11/11

### PAVING AND GRADING LAYOUT

# C1.5



**CRAWFORD**

**GYMNASTICS BUILDING**

**RICHMOND TEXAS**

PROJECT NUMBER: DB 21095/00

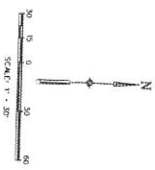
DRAWING ISSUE SCHEDULE

DATE: \_\_\_\_\_

NO. \_\_\_\_\_

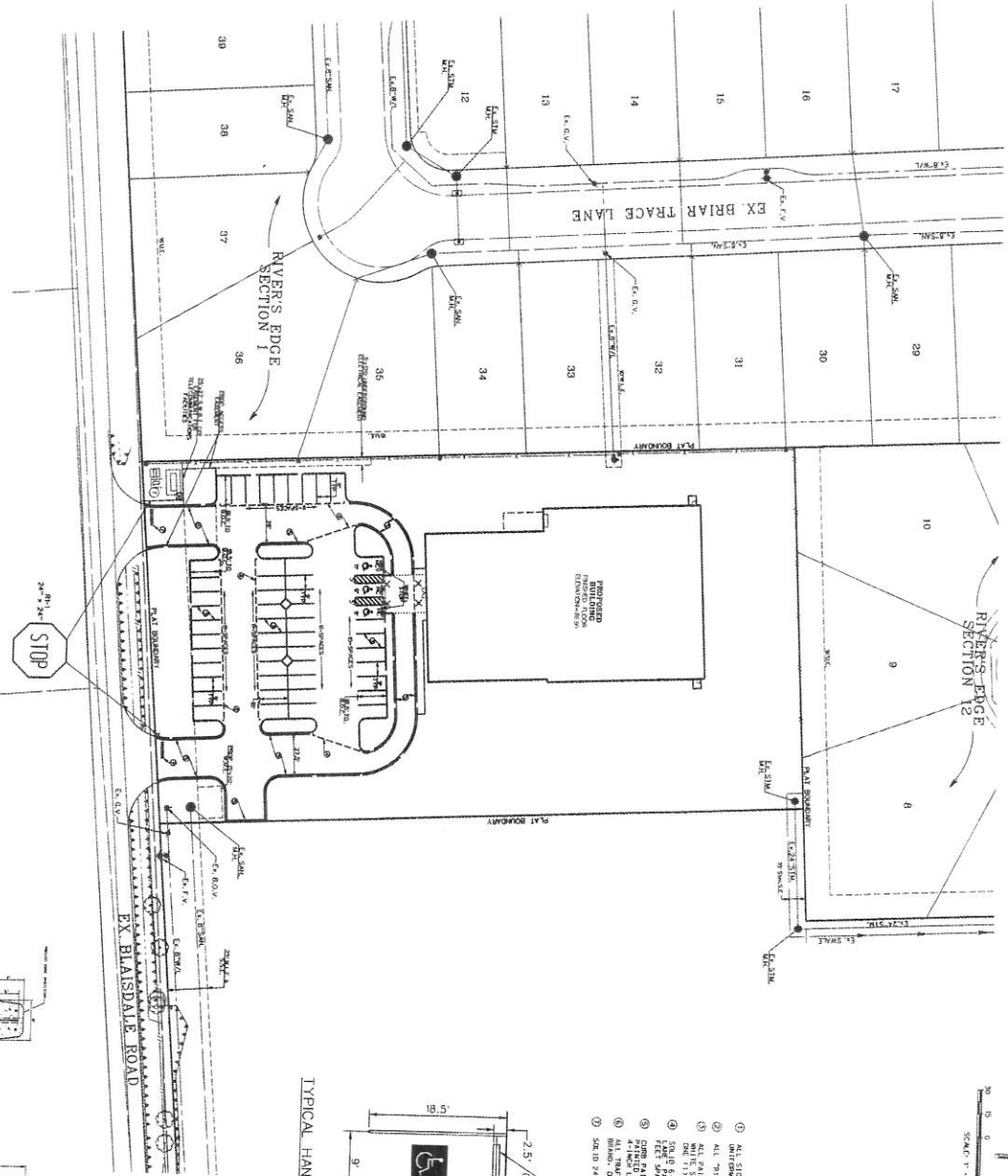
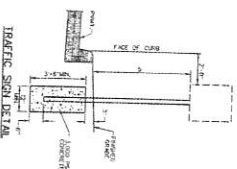
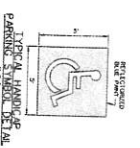
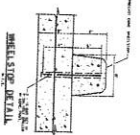
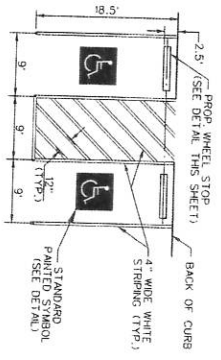
DESCRIPTION \_\_\_\_\_

OWNER: RICHMOND GYMNASIUM  
 1000 W. 11TH STREET  
 RICHMOND, TEXAS 75271  
 ARCHITECT: CRAWFORD ENGINEERS  
 1000 W. 11TH STREET  
 RICHMOND, TEXAS 75271  
 DATE: 04/15/00



- STRIPING NOTES
1. ALL SIGN DESIGNATIONS USED ARE REFERENCED IN THE SYMBOL ON DRAWING MATERIALS (SCHEDULES).
  2. ALL 18"-24" SIGN SIZES SHALL BE SIZED AS NOTED.
  3. ALL STRIPING SHALL BE PAINTED WITH A DURABLE WHITE REFLECTORIZED ENamel PAINT. THE STRIPING SHALL BE PAINTED WITH A DURABLE WHITE REFLECTORIZED ENamel PAINT. THE STRIPING SHALL BE PAINTED WITH A DURABLE WHITE REFLECTORIZED ENamel PAINT. THE STRIPING SHALL BE PAINTED WITH A DURABLE WHITE REFLECTORIZED ENamel PAINT.
  4. ALL STRIPING SHALL BE PAINTED WITH A DURABLE WHITE REFLECTORIZED ENamel PAINT. THE STRIPING SHALL BE PAINTED WITH A DURABLE WHITE REFLECTORIZED ENamel PAINT. THE STRIPING SHALL BE PAINTED WITH A DURABLE WHITE REFLECTORIZED ENamel PAINT.
  5. ALL STRIPING SHALL BE PAINTED WITH A DURABLE WHITE REFLECTORIZED ENamel PAINT. THE STRIPING SHALL BE PAINTED WITH A DURABLE WHITE REFLECTORIZED ENamel PAINT. THE STRIPING SHALL BE PAINTED WITH A DURABLE WHITE REFLECTORIZED ENamel PAINT.

**TYPICAL HANDICAP PARKING DETAILS**  
N.T.S.



STRIPING LAYOUT

**C1.6**









# CRAWFORD

## GYMNASTICS BUILDING

RICHMOND TEXAS

PROJECT NUMBER DB 21085.00

DRAWING ISSUE SCHEDULE

DATE



9-23-00

SANITARY DETAILS

# C1.10

<p><b>1. MANHOLE FRAME AND COVER</b></p>	<p><b>2. SANITARY SEWER BEDDING</b></p>	<p><b>3. SANITARY SEWER BEDDING FOR WET CONDITIONS</b></p>	<p><b>7. SANITARY SEWER MANHOLE</b></p>
<p><b>4. GREASE TRAP</b></p>	<p><b>5. SANITARY SEWER SERVICE CONNECTION</b></p>	<p><b>6. SANITARY SEWER STACK</b></p>	<p><b>8. STANDARD CLEANOUT FOR SAN. SEWER (MAIN LINE)</b></p>
<p><b>9. SERVICE LINE CLEANOUT ASSEMBLY</b></p>			

**CITY OF RICHMOND**  
STANDARD SPECIFICATIONS DETAILS  
SANITARY

SCALE: 1" = 1'-0"

DATE: 9-23-00

PROJECT NUMBER: DB 21085.00

DRAWING ISSUE SCHEDULE

DATE

APPROVED: *[Signature]*  
DATE: 9/24/00

# CRAWFORD GYMNASTICS BUILDING

RICHMOND  
TEXAS

PROJECT NUMBER DB 2189-00  
DRAWING ISSUE SCHEDULE  
DATE

**1. MANHOLE AND INLET FRAME AND COVER**

**2. STORM SEWER BEDDING**

**3. STORM SEWER BEDDING FOR WET CONDITIONS**

**4. MANHOLE TYPE 'C' FOR 42" DIA. R.C.P. AND SMALLER**

**5. TYPE 'E' INLET**

**6. TYPE 'A' INLET**

**7. TYPE 'H-2' INLET**

**8. TYPE 'C' INLET**

**9. TYPE 'C' MANHOLE FOR 48" TO 72" DIA. R.C.P.**

NO.	DATE	REVISION	BY	CHKD.	APP'D.	TITLE	SCALE	SHEET NO.	TOTAL SHEETS

**CITY OF RICHMOND  
STANDARD CONSTRUCTION DETAILS  
STORM SEWER**

**SCALE**

DRAWN BY: **MS**  
CHECKED BY: **MS**  
DATE: **08/20/00**

SHEET NO. **R-5**

DRAINAGE DETAILS

C1.11



# CRAWFORD

## GYMNASTICS BUILDING

RICHMOND TEXAS

PROJECT NUMBER 08-21065.00

DRAWING ISSUE SCHEDULE DATE

<p><b>1. CONCRETE SIDEWALK</b></p> <p>NOTES: 1. FINISH SHALL BE CONFORM TO THE CITY OF RICHMOND SPECIFICATIONS FOR CONCRETE SIDEWALKS. 2. FINISH SHALL BE 1/2" BELOW FINISH GRADE. 3. FINISH SHALL BE 1/2" BELOW FINISH GRADE. 4. FINISH SHALL BE 1/2" BELOW FINISH GRADE. 5. FINISH SHALL BE 1/2" BELOW FINISH GRADE.</p>	<p><b>2. DRIVEWAY WITH OPEN DITCH</b></p> <p>NOTES: 1. DRIVEWAY SHALL BE 12" WIDER THAN THE DRIVEWAY. 2. DRIVEWAY SHALL BE 12" WIDER THAN THE DRIVEWAY. 3. DRIVEWAY SHALL BE 12" WIDER THAN THE DRIVEWAY. 4. DRIVEWAY SHALL BE 12" WIDER THAN THE DRIVEWAY.</p>	<p><b>3. CONCRETE DRIVEWAY</b></p> <p>NOTES: 1. DRIVEWAY SHALL BE 12" WIDER THAN THE DRIVEWAY. 2. DRIVEWAY SHALL BE 12" WIDER THAN THE DRIVEWAY. 3. DRIVEWAY SHALL BE 12" WIDER THAN THE DRIVEWAY. 4. DRIVEWAY SHALL BE 12" WIDER THAN THE DRIVEWAY.</p>	<p><b>4. CONCRETE SIDEWALK RAMP</b></p> <p>NOTES: 1. RAMP SHALL BE 12" WIDER THAN THE DRIVEWAY. 2. RAMP SHALL BE 12" WIDER THAN THE DRIVEWAY. 3. RAMP SHALL BE 12" WIDER THAN THE DRIVEWAY. 4. RAMP SHALL BE 12" WIDER THAN THE DRIVEWAY.</p>
<p><b>5. TRAFFIC MARKINGS</b></p> <p>NOTES: 1. TRAFFIC MARKINGS SHALL BE 1/2" BELOW FINISH GRADE. 2. TRAFFIC MARKINGS SHALL BE 1/2" BELOW FINISH GRADE. 3. TRAFFIC MARKINGS SHALL BE 1/2" BELOW FINISH GRADE.</p>	<p><b>6. 4"x12" TRANSITION CURB</b></p> <p>NOTES: 1. CURB SHALL BE 4" HIGH AND 12" WIDE. 2. CURB SHALL BE 4" HIGH AND 12" WIDE. 3. CURB SHALL BE 4" HIGH AND 12" WIDE.</p>	<p><b>7. CONCRETE CURB</b></p> <p>NOTES: 1. CURB SHALL BE 4" HIGH AND 12" WIDE. 2. CURB SHALL BE 4" HIGH AND 12" WIDE. 3. CURB SHALL BE 4" HIGH AND 12" WIDE.</p>	<p><b>8. DOWEL TYPE EXPANSION JOINT</b></p> <p>NOTES: 1. JOINT SHALL BE 1/2" BELOW FINISH GRADE. 2. JOINT SHALL BE 1/2" BELOW FINISH GRADE. 3. JOINT SHALL BE 1/2" BELOW FINISH GRADE.</p>
<p><b>9. PAVEMENT JOINTS</b></p> <p>NOTES: 1. JOINT SHALL BE 1/2" BELOW FINISH GRADE. 2. JOINT SHALL BE 1/2" BELOW FINISH GRADE. 3. JOINT SHALL BE 1/2" BELOW FINISH GRADE.</p>	<p><b>10. DEFORMED METAL STRIP</b></p> <p>NOTES: 1. STRIP SHALL BE 1/2" BELOW FINISH GRADE. 2. STRIP SHALL BE 1/2" BELOW FINISH GRADE. 3. STRIP SHALL BE 1/2" BELOW FINISH GRADE.</p>	<p><b>11. PAVEMENT HEADER</b></p> <p>NOTES: 1. HEADER SHALL BE 1/2" BELOW FINISH GRADE. 2. HEADER SHALL BE 1/2" BELOW FINISH GRADE. 3. HEADER SHALL BE 1/2" BELOW FINISH GRADE.</p>	<p><b>12. PAVEMENT UNDERCUT</b></p> <p>NOTES: 1. UNDERCUT SHALL BE 1/2" BELOW FINISH GRADE. 2. UNDERCUT SHALL BE 1/2" BELOW FINISH GRADE. 3. UNDERCUT SHALL BE 1/2" BELOW FINISH GRADE.</p>

CITY OF RICHMOND	
STANDARD CONSTRUCTION DETAILS	
SCALE	AS SHOWN
DATE	08-21-00
PROJECT NUMBER	08-21065.00
DRAWING NUMBER	R-6



PAVING DETAILS

C1.12

# CRAWFORD GYMNASTICS BUILDING

RICHMOND  
TEXAS

PROJECT NUMBER: 08-21985-00  
DRAWING ISSUE SCHEDULE  
DATE:

### 1. STANDARD CONCRETE CURB AND CUTTER STREET CROSS-SECTIONS

1. ALL EXPOSED SURF SHALL CONFORM TO ASTM 111, COURSE FINISH PERFORM.

2. CURB SHALL BE 12" HIGH AND 12" WIDE AT TOP. GUTTER SHALL BE 12" WIDE AT TOP AND 1/2" DEEP AT BOTTOM. GUTTER SHALL BE 1/2" DEEP AT BOTTOM AND 1/2" WIDE AT TOP.

3. GUTTER SHALL BE 1/2" DEEP AT BOTTOM AND 1/2" WIDE AT TOP. GUTTER SHALL BE 1/2" DEEP AT BOTTOM AND 1/2" WIDE AT TOP.

4. ALL CURB SHALL BE 12" HIGH AND 12" WIDE AT TOP. GUTTER SHALL BE 12" WIDE AT TOP AND 1/2" DEEP AT BOTTOM. GUTTER SHALL BE 1/2" DEEP AT BOTTOM AND 1/2" WIDE AT TOP.

5. ALL CURB SHALL BE 12" HIGH AND 12" WIDE AT TOP. GUTTER SHALL BE 12" WIDE AT TOP AND 1/2" DEEP AT BOTTOM. GUTTER SHALL BE 1/2" DEEP AT BOTTOM AND 1/2" WIDE AT TOP.

### 2. STANDARD CONCRETE PAVEMENT WITH OPEN DITCH CROSS-SECTION

1. ALL EXPOSED SURF SHALL CONFORM TO ASTM 111, COURSE FINISH PERFORM.

2. CURB SHALL BE 12" HIGH AND 12" WIDE AT TOP. GUTTER SHALL BE 12" WIDE AT TOP AND 1/2" DEEP AT BOTTOM. GUTTER SHALL BE 1/2" DEEP AT BOTTOM AND 1/2" WIDE AT TOP.

3. GUTTER SHALL BE 12" WIDE AT TOP AND 1/2" DEEP AT BOTTOM. GUTTER SHALL BE 1/2" DEEP AT BOTTOM AND 1/2" WIDE AT TOP.

4. ALL CURB SHALL BE 12" HIGH AND 12" WIDE AT TOP. GUTTER SHALL BE 12" WIDE AT TOP AND 1/2" DEEP AT BOTTOM. GUTTER SHALL BE 1/2" DEEP AT BOTTOM AND 1/2" WIDE AT TOP.

5. ALL CURB SHALL BE 12" HIGH AND 12" WIDE AT TOP. GUTTER SHALL BE 12" WIDE AT TOP AND 1/2" DEEP AT BOTTOM. GUTTER SHALL BE 1/2" DEEP AT BOTTOM AND 1/2" WIDE AT TOP.

### 3. STANDARD ASPHALT PAVEMENT WITH OPEN DITCH CROSS-SECTION

1. EXPOSED FINISHED SURFACE SHALL BE 1/2" THICK AND 1/2" WIDE AT TOP. GUTTER SHALL BE 12" WIDE AT TOP AND 1/2" DEEP AT BOTTOM. GUTTER SHALL BE 1/2" DEEP AT BOTTOM AND 1/2" WIDE AT TOP.

2. FINISH SURFACE SHALL BE 1/2" THICK AND 1/2" WIDE AT TOP. GUTTER SHALL BE 12" WIDE AT TOP AND 1/2" DEEP AT BOTTOM. GUTTER SHALL BE 1/2" DEEP AT BOTTOM AND 1/2" WIDE AT TOP.

### 4. TRAFFIC SIGNAGE

1. ALL TRAFFIC SIGNS SHALL BE 18" IN DIAMETER.

2. ALL TRAFFIC SIGNS SHALL BE 18" IN DIAMETER.

3. ALL TRAFFIC SIGNS SHALL BE 18" IN DIAMETER.

4. ALL TRAFFIC SIGNS SHALL BE 18" IN DIAMETER.

### 5. SLOPED END TREATMENT

1. ALL EXPOSED SURF SHALL CONFORM TO ASTM 111, COURSE FINISH PERFORM.

2. ALL EXPOSED SURF SHALL CONFORM TO ASTM 111, COURSE FINISH PERFORM.

### 6. TYPE 'III' BARRICADE

1. ALL EXPOSED SURF SHALL CONFORM TO ASTM 111, COURSE FINISH PERFORM.

2. ALL EXPOSED SURF SHALL CONFORM TO ASTM 111, COURSE FINISH PERFORM.

CITY OF RICHMOND  
STANDARD CONSTRUCTION DETAILS  
PAVING

SCALE: 1" = 1'-0"

DATE: 10/1/11

PROJECT NUMBER: 08-21985-00

DRAWING ISSUE SCHEDULE

DATE:





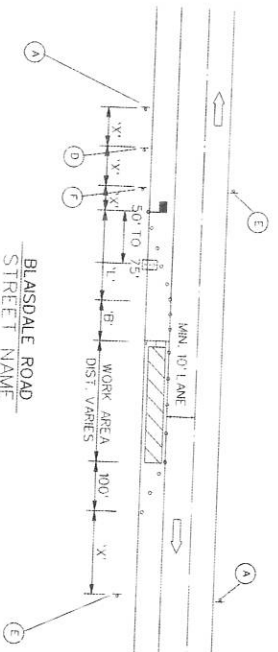
# CRAWFORD

## GYMNASTICS BUILDING

RICHMOND TEXAS

PROJECT NUMBER: DB 21065 00  
 DRAWING NUMBER: DB 21065 00  
 DRAWING TITLE: SCHEDULE  
 DATE: 08/11/16

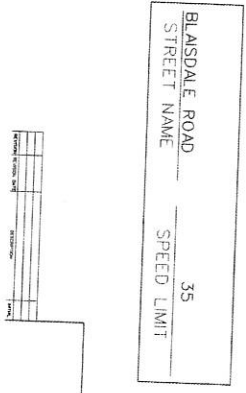
### TYPICAL RIGHT LANE CLOSURE OF A MULTILANE STREET (LEFT LANE CLOSURE SIMILAR)



Length for Longitudinal Buffer

Posting Height	Length in Feet	PLASTIC FORM (depending on vehicle)	TRUCK SIGN SPACING, LINK LENGTH, AND SPACED SPACING OF CHANNELIZATION DEVICES
20	35	TYPE II BARRICADE	100'
30	50	FLASHING ARROW PANEL	150'
40	75	FLASHING ARROW PANEL	200'
50	100	FLASHING ARROW PANEL	250'
55	125	FLASHING ARROW PANEL	300'

\* ENGINEER TO STAKE THROUGH ALL SPEED LIMITS NOT APPLICABLE



REVISIONS

NO.	DATE	DESCRIPTION
1	08/11/16	ISSUED FOR PERMIT

DESIGNED BY: [Signature]  
 CHECKED BY: [Signature]  
 DATE: 08/11/16

**SPECIAL TRAFFIC REGULATIONS**

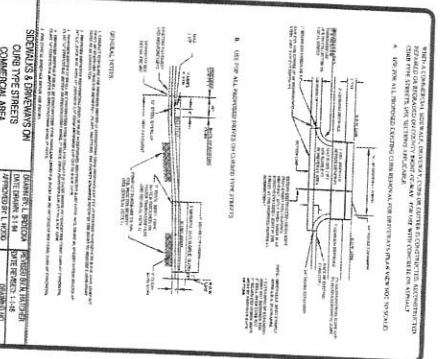
1. Contractor shall maintain a minimum of two (2) lanes in each direction of travel at all times during construction.
2. Contractor shall be responsible for notifying and maintaining adjacent property owners who may be affected by the construction.
3. Contractor shall be responsible for notifying and maintaining adjacent property owners who may be affected by the construction.
4. No work shall be done from 7:00 a.m. to 6:00 p.m. on any day when the weather is forecast to be less than 40 degrees Fahrenheit.
5. Contractor shall be responsible for notifying and maintaining adjacent property owners who may be affected by the construction.
6. Contractor shall be responsible for notifying and maintaining adjacent property owners who may be affected by the construction.
7. Contractor shall be responsible for notifying and maintaining adjacent property owners who may be affected by the construction.
8. Contractor shall be responsible for notifying and maintaining adjacent property owners who may be affected by the construction.
9. Contractor shall be responsible for notifying and maintaining adjacent property owners who may be affected by the construction.
10. Contractor shall be responsible for notifying and maintaining adjacent property owners who may be affected by the construction.

#### SPACING FOR CHANNELIZING DEVICES

1. Traffic signs on curves: 100' x 4" with clearance 100' x 4" and 100' x 4" clearance.
2. Traffic signs on straight: 100' x 4" with clearance 100' x 4" and 100' x 4" clearance.
3. Traffic signs on curves: 100' x 4" with clearance 100' x 4" and 100' x 4" clearance.
4. Traffic signs on straight: 100' x 4" with clearance 100' x 4" and 100' x 4" clearance.
5. Traffic signs on curves: 100' x 4" with clearance 100' x 4" and 100' x 4" clearance.
6. Traffic signs on straight: 100' x 4" with clearance 100' x 4" and 100' x 4" clearance.
7. Traffic signs on curves: 100' x 4" with clearance 100' x 4" and 100' x 4" clearance.
8. Traffic signs on straight: 100' x 4" with clearance 100' x 4" and 100' x 4" clearance.
9. Traffic signs on curves: 100' x 4" with clearance 100' x 4" and 100' x 4" clearance.
10. Traffic signs on straight: 100' x 4" with clearance 100' x 4" and 100' x 4" clearance.

**GENERAL NOTES FOR SIGNS, MARKERS, AND DIMENSIONS**

1. SIGN AND MARKER SHALL BE PLACED AT EACH END AND MOUNT ON STEEL POSTS.
2. SIGN AND MARKER SHALL BE PLACED AT EACH END AND MOUNT ON STEEL POSTS.
3. SIGN AND MARKER SHALL BE PLACED AT EACH END AND MOUNT ON STEEL POSTS.
4. SIGN AND MARKER SHALL BE PLACED AT EACH END AND MOUNT ON STEEL POSTS.
5. SIGN AND MARKER SHALL BE PLACED AT EACH END AND MOUNT ON STEEL POSTS.
6. SIGN AND MARKER SHALL BE PLACED AT EACH END AND MOUNT ON STEEL POSTS.
7. SIGN AND MARKER SHALL BE PLACED AT EACH END AND MOUNT ON STEEL POSTS.
8. SIGN AND MARKER SHALL BE PLACED AT EACH END AND MOUNT ON STEEL POSTS.
9. SIGN AND MARKER SHALL BE PLACED AT EACH END AND MOUNT ON STEEL POSTS.
10. SIGN AND MARKER SHALL BE PLACED AT EACH END AND MOUNT ON STEEL POSTS.



**CONSTRUCTION NOTES FOR SIGNS, MARKERS, AND DIMENSIONS**

1. SIGN AND MARKER SHALL BE PLACED AT EACH END AND MOUNT ON STEEL POSTS.
2. SIGN AND MARKER SHALL BE PLACED AT EACH END AND MOUNT ON STEEL POSTS.
3. SIGN AND MARKER SHALL BE PLACED AT EACH END AND MOUNT ON STEEL POSTS.
4. SIGN AND MARKER SHALL BE PLACED AT EACH END AND MOUNT ON STEEL POSTS.
5. SIGN AND MARKER SHALL BE PLACED AT EACH END AND MOUNT ON STEEL POSTS.
6. SIGN AND MARKER SHALL BE PLACED AT EACH END AND MOUNT ON STEEL POSTS.
7. SIGN AND MARKER SHALL BE PLACED AT EACH END AND MOUNT ON STEEL POSTS.
8. SIGN AND MARKER SHALL BE PLACED AT EACH END AND MOUNT ON STEEL POSTS.
9. SIGN AND MARKER SHALL BE PLACED AT EACH END AND MOUNT ON STEEL POSTS.
10. SIGN AND MARKER SHALL BE PLACED AT EACH END AND MOUNT ON STEEL POSTS.

APPROVED: [Signature]  
 DATE: 08/11/16

MISCELLANEOUS AND TRAFFIC CONTROL DETAILS  
**C1.16**

**CRAWFORD**  
**GYMNASTICS**  
**BUILDING**

RICHMOND  
 TEXAS

PROJECT NUMBER DB 2106.00  
 DRAWING ISSUE SCHEDULE  
 DATE

COORDINATES



C1.17

**STORM**

Node ID	Nothing	East:ing
10002	13779840.28	3003101.92
10003	13779838.81	3003067.22
10005	13779731.15	3003072.41
10007	13779887.54	3003076.03
10008	13779648.35	3003078.94
10009	13779587.93	3002993.01
10010	13779911.92	3002891.86
10011	13779706.91	3002902.32

**SANITARY**

Node ID	Nothing	East:ing
11001	13779560.42	3003055.78
11002	13779759.72	3003043.79
11004	13779459.05	3003030.52
11004	13779359.10	3003045.85

**WATER**

Node ID	Nothing	East:ing
12001	13779550.36	3003119.57
12002	13779573.15	3003117.79
12003	13779516.18	3003117.56
12005	13779800.84	3003109.42
12007	13779572.47	3003109.28
12008	13779572.16	3003105.06
12009	13779515.47	3003108.10
12010	13779512.86	3003104.87
12011	13779511.77	3003100.85
12012	13779518.49	3003092.34
12013	13779519.24	3003097.73
12015	13779519.24	3003094.04
12016	13779742.28	3003091.16
12017	13779752.24	3003079.27
12018	13779746.60	3003074.99
12019	13779500.20	3003031.16
12020	13779748.78	3003031.06

**PAVING**

Node ID	Nothing	East:ing
8001	13779519.06	3003090.78
8002	13779541.25	3003067.11
8003	13779550.01	3003067.97
8005	13779529.42	3003066.44
8006	13779584.96	3002995.95
8007	13779595.64	3002995.95
8008	13779533.37	3002994.59
8010	13779522.70	3002994.59
8011	13779538.56	3002991.42
8012	13779511.29	3002914.92
8014	13779543.59	3002991.44
8015	13779565.94	3002911.05
8016	13779657.45	3002915.31
8019	13779562.18	3002950.79
8020	13779701.60	3002960.18
8021	13779705.74	3003048.24
8022	13779706.70	3003048.24
8023	13779671.22	3003090.47
8024	13779641.23	3003100.27
8025	13779613.18	3003100.27
8026	13779587.22	3003120.09
8028	13779587.27	3003101.63
8029	13779549.62	3003092.63
8030	13779543.52	3003092.63
8031	13779543.52	3003125.87
8032	13779543.52	3003092.63
8033	13779811.96	3003063.17
8034	13779631.82	3003054.18
8035	13779631.82	3003054.18
8036	13779607.07	3002952.82
8039	13779609.50	3002943.84
8040	13779618.04	3002943.84
8041	13779618.04	3002980.92
8042	13779618.04	3003017.24
8043	13779610.07	3003016.87
8044	13779610.07	3003016.87
8045	13779610.07	3003016.87
8048	13779610.07	3003056.45
8049	13779610.07	3003051.72
8050	13779610.07	3002995.12
8051	13779662.48	3002949.86
8053	13779668.99	3002949.86
8054	13779664.26	3002945.60
8055	13779664.26	3002945.60
8059	13779667.61	3002951.53
8059	13779668.11	3002984.86
8059	13779689.26	3002984.86
8060	13779676.60	3002984.86
8062	13779529.80	3002927.32
8063	13779532.07	3002949.56
8064	13779504.16	3002894.87
8065	13779519.16	3002918.66
8066	13779519.16	3002918.66
8066	13779519.16	3002897.56
9001	13779554.26	3002820.51
9002	13779510.95	3002856.40
9003	13779510.95	3002856.40
9004	13779510.95	3002856.40
9007	13779711.27	3002988.81
9008	13779711.27	3002988.81
9009	13779711.27	3002931.55
9010	13779711.27	3002931.55
9011	13779874.18	3002905.55
9012	13779874.18	3002904.99
9013	13779880.85	3002910.98
9014	13779881.17	3003052.10
9015	13779881.17	3003052.10
9016	13779881.17	3003020.83

APPROVED:   
 MICHAEL J. COMBS  
 DATE: 10/16