



Fort Bend County Engineering  
FORT BEND COUNTY, TEXAS

Richard W. Stolleis, P.E.  
County Engineer

September 30, 2016

Commissioner Richard Morrison  
Fort Bend County Precinct 1  
1517 Eugene Heimann Circle  
Richmond, TX 77469

**RE: Sienna Parkway at Scanlan Trace (South) – Interim Multi-Way Stop Control**

Dear Commissioner Morrison:

The Fort Bend County Engineering Department has completed a review of the operational conditions at the intersection of Sienna Parkway at Scanlan Trace (South) in response to a request for multi-way stop control. The posted speed limit on Sienna Parkway is 45 mph. The intersection currently operates with stop control on Scanlan Trace. Sienna Parkway is identified as a Major Thoroughfare and Scanlan Trace is identified as a Collector in the 2015 Fort Bend County Major Thoroughfare Plan.

A traffic signal will be constructed at the intersection and is scheduled to be operational in mid-to-late-2017. In the interim, Engineering recommends conversion of the intersection to multi-way stop control until the signal is operational, as shown on the attached traffic control plan. The public hearing date for acceptance of the plans will be scheduled on the next available Commissioner's Court Agenda. If you have any questions please do not hesitate to contact me at 281-633-7528 or [chris.debaillon@fortbendcountytexas.gov](mailto:chris.debaillon@fortbendcountytexas.gov).

Regards,

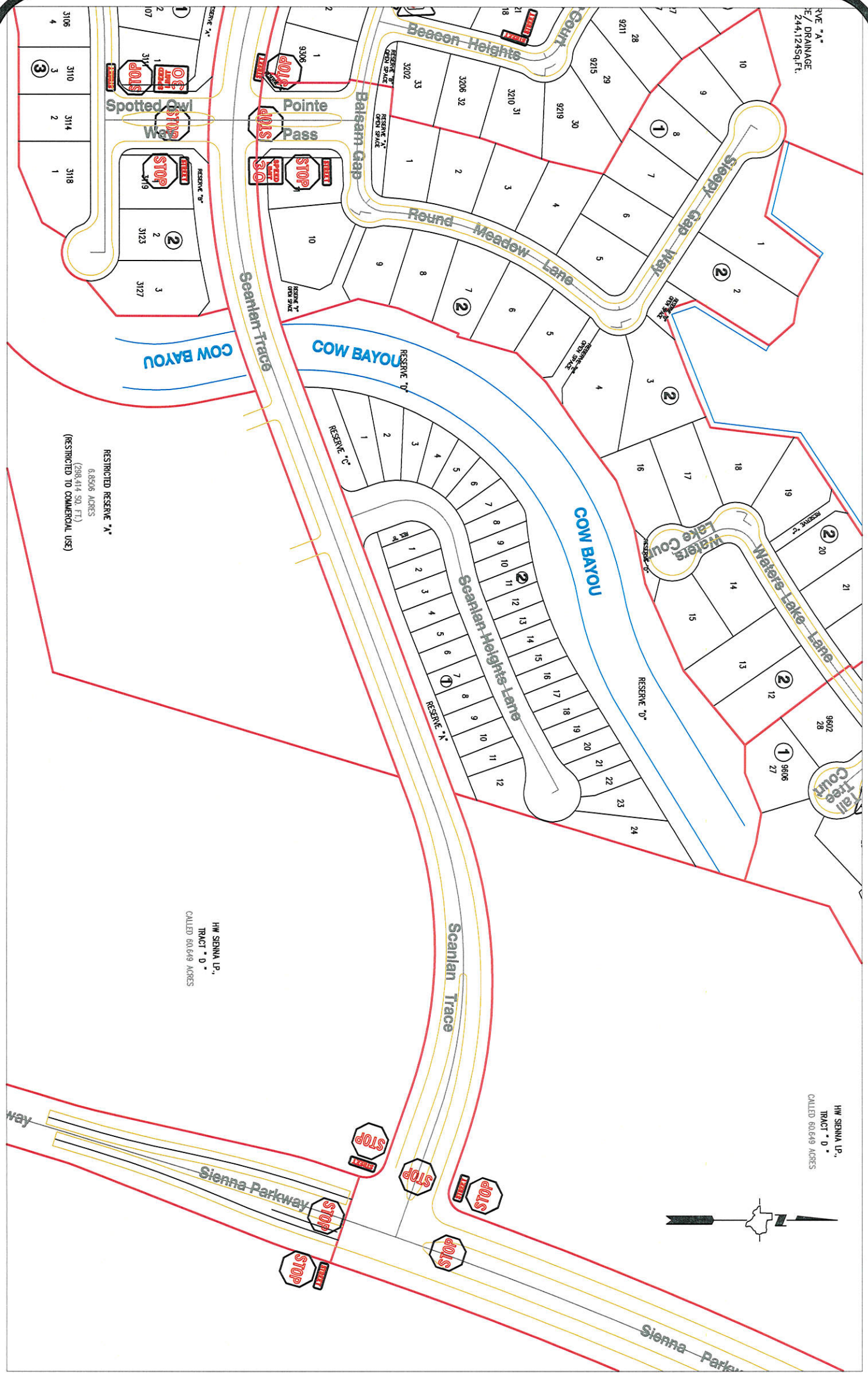
Chris Debaillon, PE, PTOE  
Assistant County Engineer – Traffic

CD/mjs

cc: Judge Robert E. Hebert, County Judge  
Marc Grant - FBC Road & Bridge  
Brian Fields - Signage Department  
File

Attachment

RVE "A"  
E/ DRAINAGE  
244,124sq.ft.



RESTRICTED RESERVE "A"  
6.8506 ACRES  
(298,414 SQ. FT.)  
(RESTRICTED TO COMMERCIAL USE)

HW SIENNA LP.,  
TRACT "D"  
CALLED 60.649 ACRES

HW SIENNA LP.,  
TRACT "D"  
CALLED 60.649 ACRES

**Note:**  
The purpose of this traffic control plan is to establish traffic control for Scanlan Trace at Sienna Parkway with the addition of a multi-way stop as indicated on the drawing.

Drawn By: L. Brdecka  
Date: 10-3-16  
Approved By: Chris Deballon, PE PTOE  
Date: **CD 10/3/16**  
Scale  
1" = 200'-0"

**Scanlan Trace at Sienna Parkway  
Control Map and  
Traffic Sign Layout**

Fort Bend County Engineering Dept.  
301 Jackson Street  
Richmond, Texas 77469