

REVIEW BY FORT BEND COUNTY COMMISSIONERS COURT

On this 11th day of October, 2016, Commissioners Court came on to be heard and reviewed the accompanying notice of Comcast
Job Location 1902 Blake Road, Sugarland, TX 77478
Date 7/24/2007 Bond No. 104865058, Permit No. 2016-9634 to make use of certain Fort Bend County property subject to, "A Revised Order Regulating the Laying, Construction, Maintenance, and Repair of Buried Cables, Conduits, and Pole Lines, In, Under, Across or Along Roads, Streets, Highways, and Drainage Ditches in Fort Bend County, Texas, Under the Jurisdiction of the Commissioners Court of Fort Bend County, Texas," as passed by the Commissioners Court of Fort Bend County, Texas the 3rd day of August, 1987, recorded in Volume _____ of the Minutes of the Commissioners Court of Fort Bend County, Texas, to the extent that such order is not inconsistent with Article 1436a, Vernon's Texas Civil Statutes. Upon Motion of Commissioner _____, seconded by Commissioner _____, duly put and carried, it is ORDERED, ADJUDGED AND DECREED that said notice of said above purpose is hereby acknowledged by the Commissioners Court of Fort Bend County, Texas, and that said notice be placed on record according to the regulation order thereof.

Notes:

1. Evidence of review by the Commissioners Court must be kept on the job site and failure to do so constitutes grounds for job shutdown.
2. Written notices are required:
 - a. 48 hours in advance of construction start up, and
 - b. when construction is completed and ready for final inspectionMail notices to: Permit Administrator
Fort Bend County Engineering
301 Jackson Street
Richmond, Texas 77469
281-633-7500
3. This permit expires one (1) year from date of permit if construction has not commenced.

By:

for

County Engineer



Presented to Commissioners Court and approved.
Recorded in Volume _____

Minutes of Commissioners Court

By:

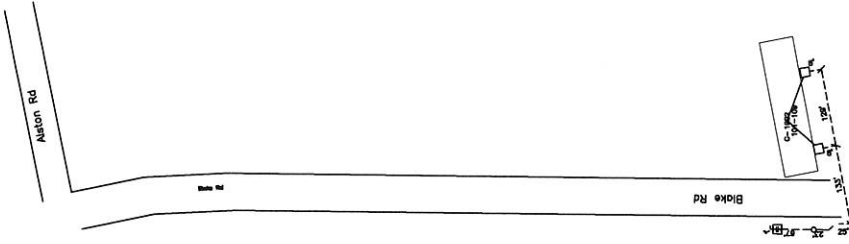
N/A

Drainage District Engineer/Manager

Clerk of Commissioners Court

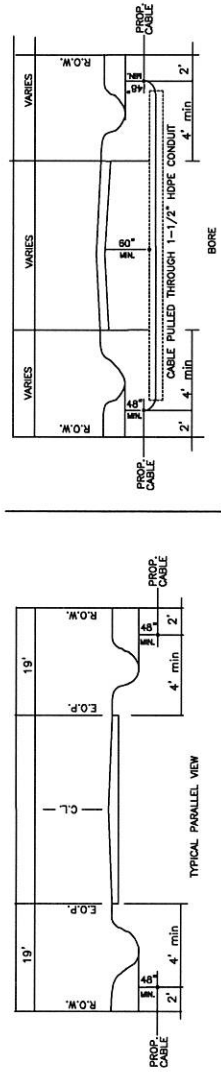
By:

Deputy



Comcast shall bore for coax cable placement in 1-1/2" HDPE conduit in street ROW on Blake Rd to new customer @ 1902 Blake Rd

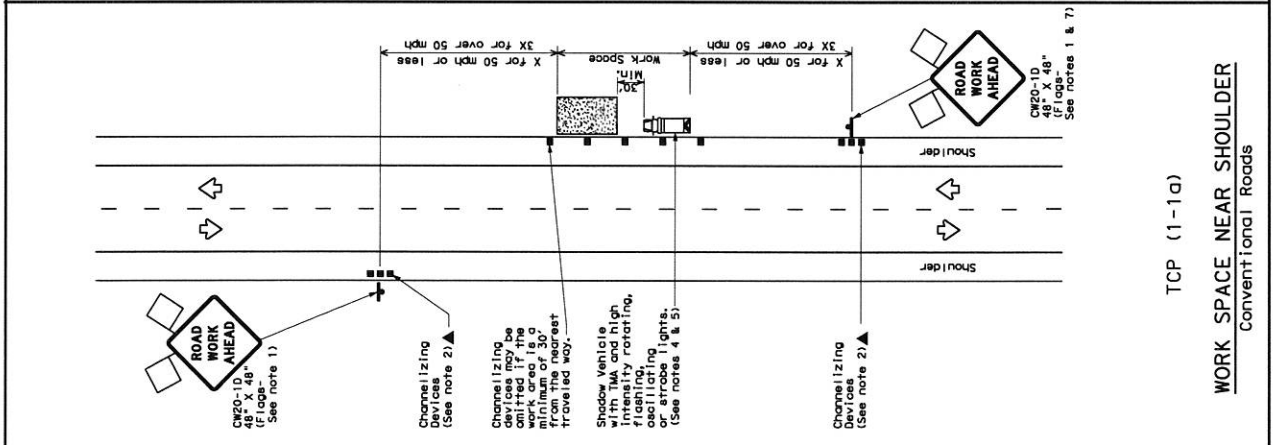
Bore pits /
length 4'
width 4'
depth 4'



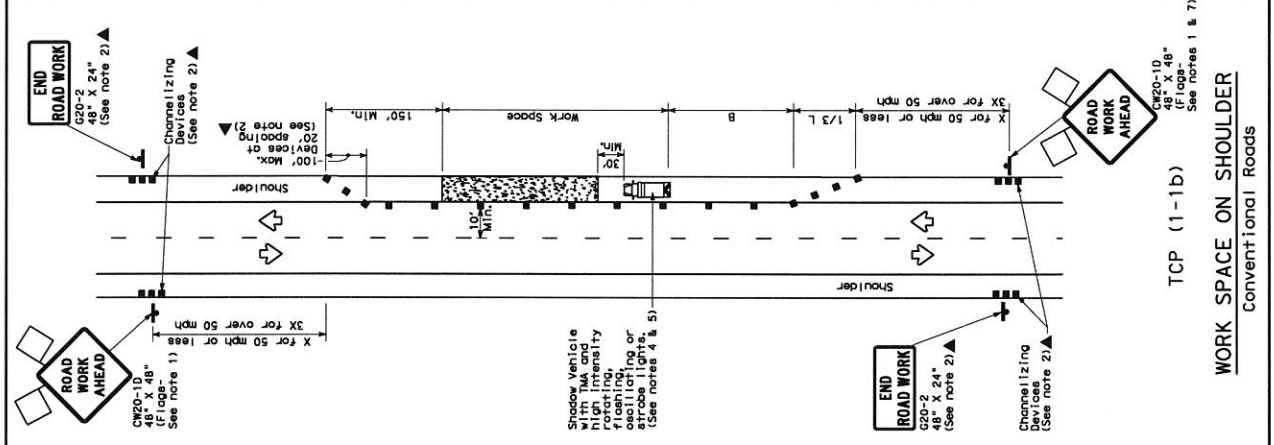
TYPICAL PARALLEL VIEW

DISCLAIMER: The use of this standard is governed by the Texas Engineering Practice Act. No warranty of any kind is made by TxDOT for any purpose whatsoever. TxDOT assumes no responsibility for the content or use of this standard.

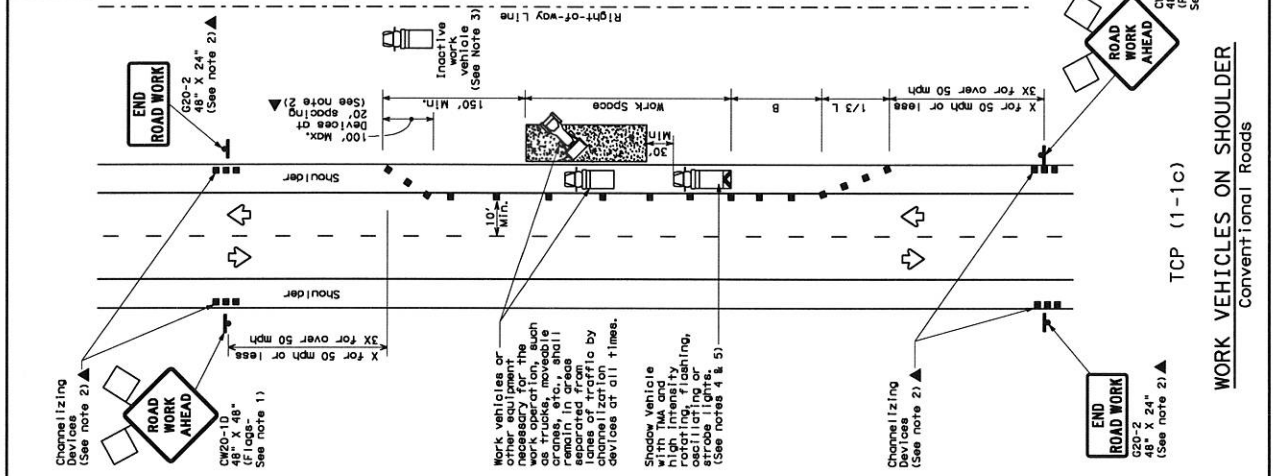
DATE: FILE:



TCP (1-1a)
Conventional Roads



TCP (1-1b)
Conventional Roads



TCP (1-1c)
Conventional Roads

LEGEND

Type 3 Barricade	Channelizing Devices
Heavy Work Vehicle	Truck Mounted Attenuator (TMA)
Trailer Mounted Flashing Arrow Board	Portable Changeable Message Sign (PCMS)
Sign	Traffic Flow
Flag	Flagger

Posted Speed	Minimum Taper Length	Suggested Maximum Spacing of Channelizing Devices	Minimum Spacing of Barricades	Minimum Spacing of Signs	Suggested Maximum Length of Sign
30	150'	165'	180'	30'	120'
35	205'	225'	245'	35'	160'
40	265'	295'	320'	40'	240'
50	450'	495'	540'	45'	320'
55	550'	605'	660'	55'	400'
60	660'	720'	780'	60'	500'
65	770'	840'	900'	65'	600'
70	880'	960'	1020'	70'	700'
75	1000'	1080'	1140'	75'	800'
80	1120'	1200'	1260'	80'	900'

* Conventional Roads Only
 ** Taper lengths have been rounded off.
 L=Length of Taper (FT) Width of Offset (FT) S=Posted Speed (MPH)

TYPICAL USAGE

MOBILE	SHORT DURATION	SHORT TERM STATIONARY	INTERMEDIATE TERM STATIONARY	LONG TERM STATIONARY
✓				

GENERAL NOTES

- Flags attached to signs where shown are REQUIRED.
- All traffic control devices illustrated are REQUIRED, except those denoted with the triangle symbol may be omitted when attached elsewhere in the plan, or for routine maintenance work, when approved by the Engineer.
- Inoperative work vehicles or other equipment should be parked near the right-of-way line and not parked on the paved shoulder.
- A Shadow Vehicle with a TMA should be used anytime it can be positioned in the work area or the taper. If the Shadow Vehicle is not adequately present but road or work conditions require the traffic control to remain in place, Type 3 Barricades or other channelizing devices may be substituted for the Shadow Vehicle and TMA.
- Additional Shadow Vehicles with TMAs may be positioned off the paved shoulder in the taper area, but not in the work area, to provide additional freeways.
- See TCP (5-1) for shoulder work on divided highways, expressways and freeways.
- CP21-5 "SHOULDER WORK" signs may be used in place of CP20-10 "ROAD WORK AHEAD" signs for shoulder work on conventional roadways.

For construction or maintenance contract work, specific requirements for signs and materials can be found in the project GENERAL NOTES for the Bidding, Barricades, Signs and Traffic Handling.

Texas Department of Transportation
 Traffic Operations Division

**TRAFFIC CONTROL PLAN
 CONVENTIONAL ROAD
 SHOULDER WORK**

TCP (1-1) - 12

REVISED: 1-12
 1-12
 1-87
 1-87
 4-88

DATE: FILE: