


REVIEW BY FORT BEND COUNTY COMMISSIONERS COURT

On this 4th day of October, 2016, Commissioners Court came on to be heard and reviewed the accompanying notice of AT&T Texas Job Location 5221 Meadow Ranch Parkway, Richmond, TX 77407 Date 3/6/2007 Bond No. CH1-001686693-01, Permit No. 2016-9455 to make use of certain Fort Bend County property subject to, "A Revised Order Regulating the Laying, Construction, Maintenance, and Repair of Buried Cables, Conduits, and Pole Lines, In, Under, Across or Along Roads, Streets, Highways, and Drainage Ditches in Fort Bend County, Texas, Under the Jurisdiction of the Commissioners Court of Fort Bend County, Texas," as passed by the Commissioners Court of Fort Bend County, Texas the 3rd day of August, 1987, recorded in Volume _____ of the Minutes of the Commissioners Court of Fort Bend County, Texas, to the extent that such order is not inconsistent with Article 1436a, Vernon's Texas Civil Statutes. Upon Motion of Commissioner _____, seconded by Commissioner _____, duly put and carried, it is ORDERED, ADJUDGED AND DECREED that said notice of said above purpose is hereby acknowledged by the Commissioners Court of Fort Bend County, Texas, and that said notice be placed on record according to the regulation order thereof.

Notes:

1. Evidence of review by the Commissioners Court must be kept on the job site and failure to do so constitutes grounds for job shutdown.
2. Written notices are required:
 - a. 48 hours in advance of construction start up, and
 - b. when construction is completed and ready for final inspection
 Mail notices to: Permit Administrator
 Fort Bend County Engineering
 301 Jackson Street
 Richmond, Texas 77469
 281-633-7500
3. This permit expires one (1) year from date of permit if construction has not commenced.

By: for 
County Engineer

Presented to Commissioners Court and approved.
Recorded in Volume _____

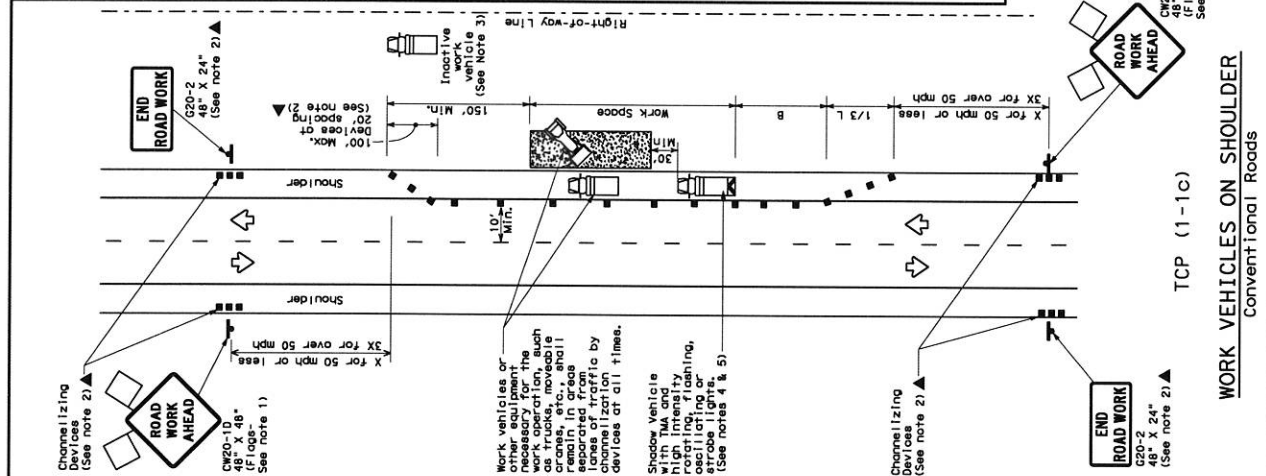
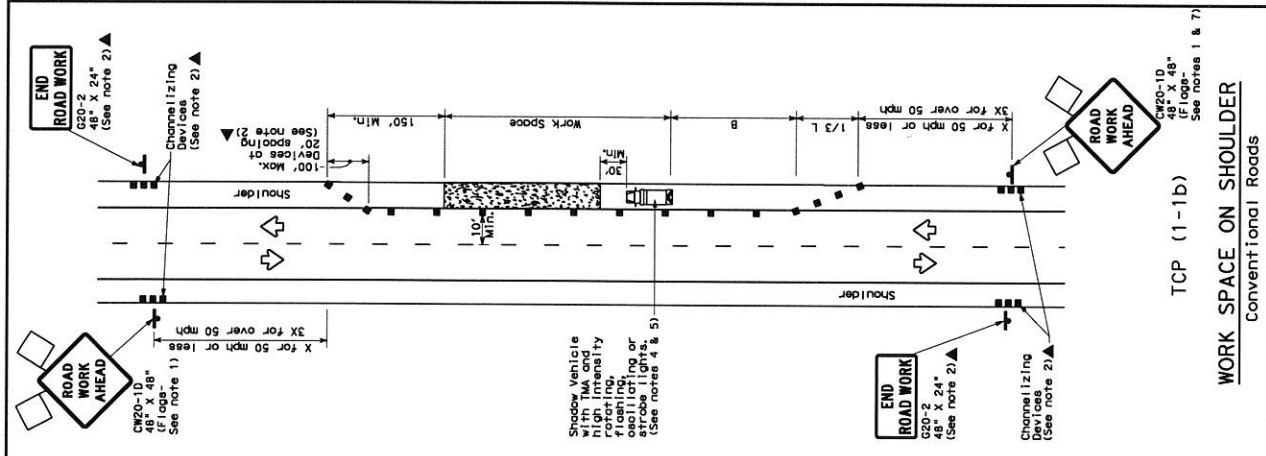
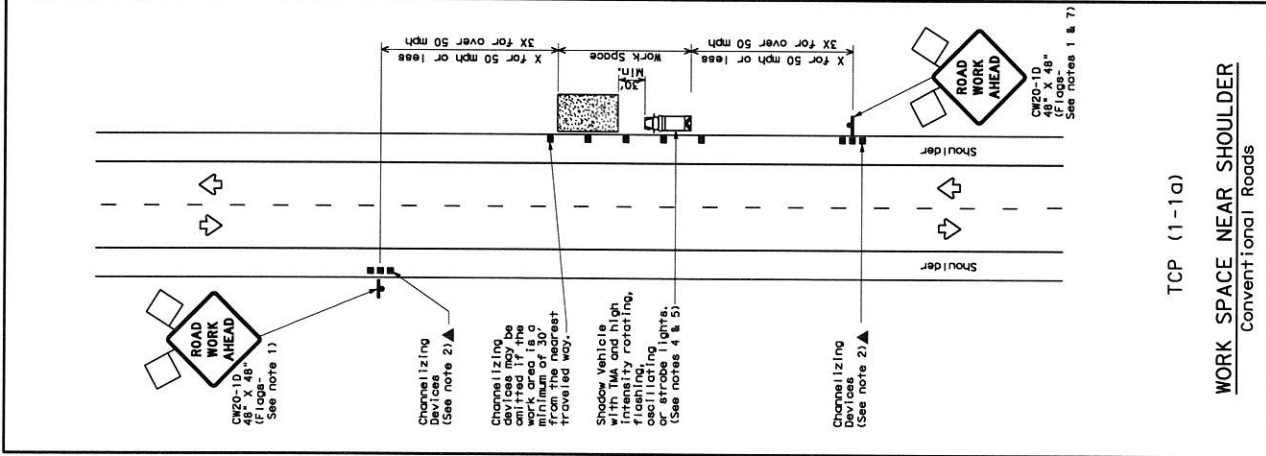
By: N/A
Drainage District Engineer/Manager

Minutes of Commissioners Court

Clerk of Commissioners Court

By: _____
Deputy

DISCLAIMER: The use of this standard is governed by the Texas Engineering Practice Act. No warranty of any kind is made by TxDOT for any purpose whatsoever. TxDOT assumes no responsibility for the content of any sign or this standard or other formats or for incorrect results or damages resulting from its use.



LEGEND

Type 3 Barricade	Channelizing Device
Heavy Work Vehicle	Truck Mounted Attenuator (TMA)
Trailer Mounted Flashing Arrow Board	Portable Changeable Message Sign (PCMS)
Sign	Traffic Flow
Flag	Flagger

Posted Speed *	Formula	Minimum Taper Lengths	Suggested Maximum Spacing of Channelizing Devices	Minimum Sign Spacing	Suggested Maximum Spacing of Channelizing Devices
30	$L = \frac{W^2}{60}$	10' 11' 12'	On a Tangent	60'	90'
35	$L = \frac{W^2}{60}$	150' 165' 180'	On a Tangent	30'	120'
40	$L = \frac{W^2}{60}$	205' 225' 245'	On a Tangent	35'	120'
45	$L = \frac{W^2}{60}$	265' 295' 320'	On a Tangent	40'	120'
50	$L = \frac{W^2}{60}$	325' 365' 400'	On a Tangent	45'	120'
55	$L = \frac{W^2}{60}$	385' 435' 480'	On a Tangent	50'	120'
60	$L = \frac{W^2}{60}$	445' 505' 560'	On a Tangent	55'	120'
65	$L = \frac{W^2}{60}$	505' 575' 640'	On a Tangent	60'	120'
70	$L = \frac{W^2}{60}$	565' 645' 720'	On a Tangent	65'	120'
75	$L = \frac{W^2}{60}$	625' 715' 800'	On a Tangent	70'	120'
		685' 785' 880'	On a Tangent	75'	150'
		745' 855' 960'	On a Tangent	80'	150'
		805' 925' 1040'	On a Tangent	85'	150'
		865' 995' 1120'	On a Tangent	90'	150'

* Conventional Roads Only
 ** Taper lengths have been rounded off.
 L=Length of Taper (FT) W=Width of Offset (FT) S=Posted Speed (MPH)

TYPICAL USAGE

MOBILE	SHORT DURATION	SHORT TERM STATIONARY	INTERMEDIATE TERM STATIONARY	LONG TERM STATIONARY

GENERAL NOTES

- Flare attached to signs where shown are REQUIRED.
- All traffic control devices illustrated are REQUIRED, except those in the notes. The triangle symbol may be omitted when stated elsewhere in the plans, or for routine maintenance work, when approved by the Engineer.
- Inoperative work vehicles or other equipment should be parked near the right-of-way line and not parked on the paved shoulder.
- Shadow vehicles with a TMA should be used anytime it can be positioned longer present but road or work conditions require the traffic control to remain in place, Type 3 Barricades or other channelizing devices may be substituted for the Shadow Vehicle and TMA.
- Shadow vehicles should be used in place of the Shadow Vehicle and TMA. See TCF(5-1) for shoulder work on divided highways, expressways and freeways.
- See TCF(5-1) for shoulder work on divided highways, expressways and freeways.
- ROAD WORK AHEAD signs for shoulder work on conventional roadways.

For construction or maintenance contract work, specific performance standards can be found in the project GENERAL NOTES for Item 502, Barricades, Signs and Traffic Handling.

Texas Department of Transportation
 Traffic Operations Division

**TRAFFIC CONTROL PLAN
 CONVENTIONAL ROAD
 SHOULDER WORK**

TCP (1-1) - 12

REV	DATE	BY	CHKD	APP'D
1-12	12/01/2007	12/01/2007	12/01/2007	12/01/2007
1-11	12/01/2007	12/01/2007	12/01/2007	12/01/2007
1-10	12/01/2007	12/01/2007	12/01/2007	12/01/2007
1-9	12/01/2007	12/01/2007	12/01/2007	12/01/2007
1-8	12/01/2007	12/01/2007	12/01/2007	12/01/2007
1-7	12/01/2007	12/01/2007	12/01/2007	12/01/2007
1-6	12/01/2007	12/01/2007	12/01/2007	12/01/2007
1-5	12/01/2007	12/01/2007	12/01/2007	12/01/2007
1-4	12/01/2007	12/01/2007	12/01/2007	12/01/2007
1-3	12/01/2007	12/01/2007	12/01/2007	12/01/2007
1-2	12/01/2007	12/01/2007	12/01/2007	12/01/2007
1-1	12/01/2007	12/01/2007	12/01/2007	12/01/2007