

**REVIEW BY FORT BEND COUNTY COMMISSIONERS COURT**

On this 13th day of September, 2016, Commissioners Court came on to be heard and reviewed the accompanying notice of AT&T Job Location Cumings Road, Rosenberg, TX 77471 Date 3/6/2007 Bond No. Ch1-001686693-01, Permit No. 2016-9244 to make use of certain Fort Bend County property subject to, "A Revised Order Regulating the Laying, Construction, Maintenance, and Repair of Buried Cables, Conduits, and Pole Lines, In, Under, Across or Along Roads, Streets, Highways, and Drainage Ditches in Fort Bend County, Texas, Under the Jurisdiction of the Commissioners Court of Fort Bend County, Texas," as passed by the Commissioners Court of Fort Bend County, Texas the 3rd day of August, 1987, recorded in Volume \_\_\_\_\_ of the Minutes of the Commissioners Court of Fort Bend County, Texas, to the extent that such order is not inconsistent with Article 1436a, Vernon's Texas Civil Statutes. Upon Motion of Commissioner \_\_\_\_\_, seconded by Commissioner \_\_\_\_\_, duly put and carried, it is ORDERED, ADJUDGED AND DECREED that said notice of said above purpose is hereby acknowledged by the Commissioners Court of Fort Bend County, Texas, and that said notice be placed on record according to the regulation order thereof.

Notes:

1. Evidence of review by the Commissioners Court must be kept on the job site and failure to do so constitutes grounds for job shutdown.
2. Written notices are required:
  - a. 48 hours in advance of construction start up, and
  - b. when construction is completed and ready for final inspectionMail notices to: Permit Administrator  
Fort Bend County Engineering  
301 Jackson Street  
Richmond, Texas 77469  
281-633-7500
3. This permit expires one (1) year from date of permit if construction has not commenced.

By: Charles O. D.  
County Engineer

Presented to Commissioners Court and approved.  
Recorded in Volume \_\_\_\_\_

By: N/A  
Drainage District Engineer/Manager

Minutes of Commissioners Court

Clerk of Commissioners Court

By: \_\_\_\_\_  
Deputy

County of Fort Bend  
Engineering Department

301 Jackson Street  
Richmond, Texas 77469

Phone: (281) 633-7500

Permit Application Review Form For  
Cable, Conduit, and Pole Line Activity  
In Fort Bend County

Permit No. 2016-9244

The following "Notice of Proposed Cable, Conduit, and/or Pole Line activity in Fort Bend County" and accompanying attachments have been reviewed and the notice conforms to appropriate regulations set by Commissioner's Court of Fort Bend County, Texas.

- X (1) Complete Application Form:
  - X a. Name of road, street, and/or drainage ditch affected.
  - X b. Vicinity map showing course of directions
  - X c. Plans and specifications

- X (2) Bond:
  - District Attorney, approval when applicable.
  - X Perpetual bond currently posted.
    - No: Ch1-001686693-01
    - Amount: \$25,000.00
    - Performance bond submitted.
  - No: \_\_\_\_\_
  - Amount: \_\_\_\_\_
  - Cashier's Check
  - No: \_\_\_\_\_
  - Amount: \_\_\_\_\_

\_\_\_\_\_ (3) Verbal permission given for emergencies, to start construction before approved in Commissioner's Court.

\_\_\_\_\_ Precinct Engineer Acknowledgment \_\_\_\_\_ Date

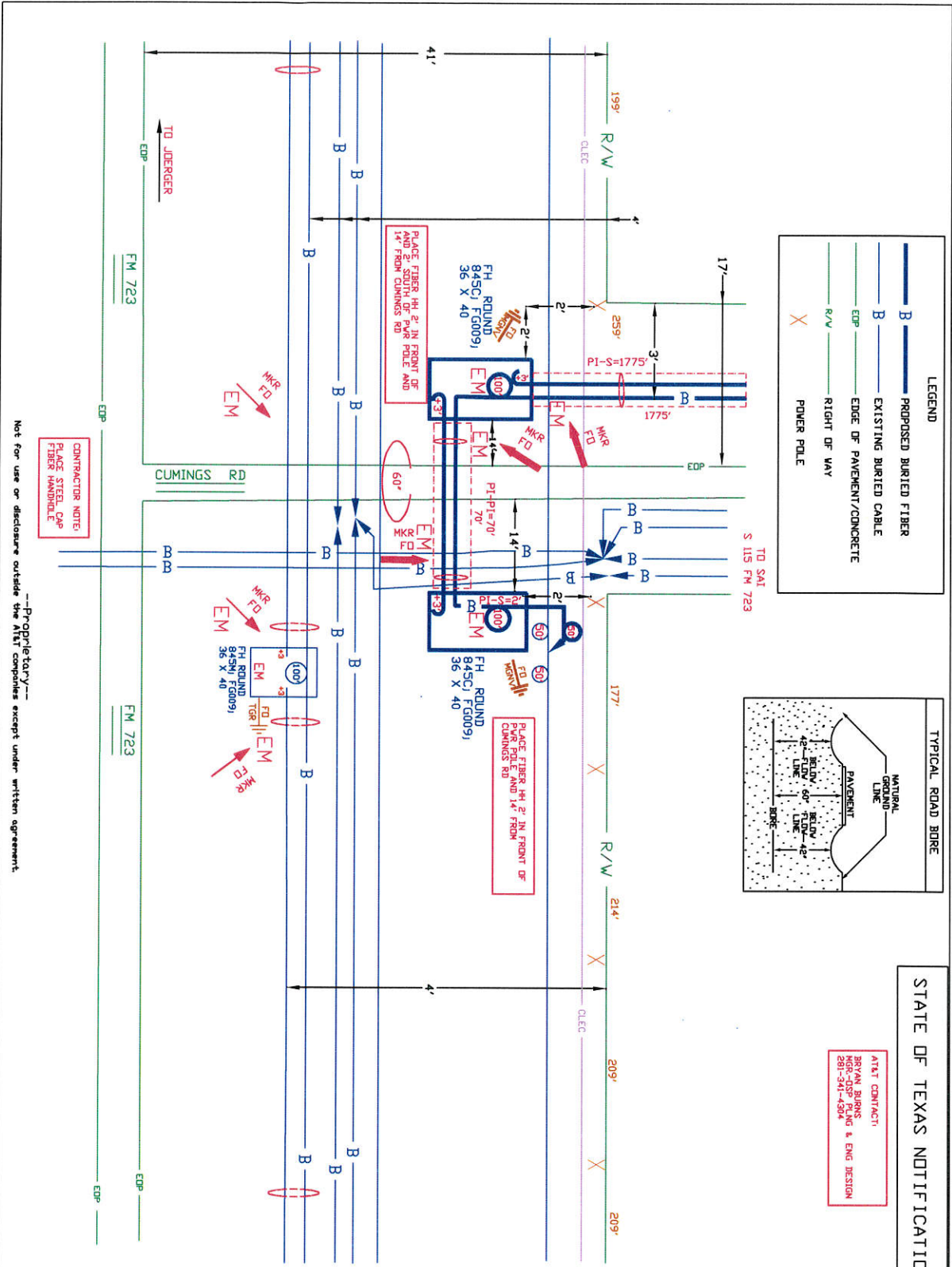
\_\_\_\_\_ Precinct Commissioner Acknowledgment \_\_\_\_\_ Date

(4)  
\_\_\_\_\_ Drainage District Approval when applicable

**We have reviewed this project and agree it meets minimum requirements.**

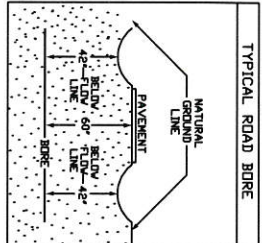
Chad O. Day  
Assistant County Engineer

9/6/16  
Date



**LEGEND**

	PROPOSED BURIED FIBER
	EXISTING BURIED CABLE
	EDGE OF PAVEMENT/CONCRETE
	R/W RIGHT OF WAY
	POWER POLE



**STATE OF TEXAS NOTIFICATION**

AT&T CONTRACT:  
 BRUNAL BURKS  
 281-341-4304

<b>SPECIAL CIRCUITS</b>	N
<b>6203 FORWARDED PERMIT REQUIRED</b>	N



OPERATING RANGE OF JOB STEPS  
 TASK \_\_\_\_\_ TO \_\_\_\_\_

MTRC  
 TRANSMISSION ZONE  
 RZ 0 CZ 0 TAPER CODE

CAUTION HIGH VOLTAGE  
 BURIED

UTILITY CO  
 REP NAME  
 REP TEL NO  
 POLE CONTACTS (+) 0 (-) 0

UTILITY CO  
 REP NAME  
 REP TEL NO  
 POLE CONTACTS (+) 0 (-) 0

PROJECT NO  
 (+) 0 (-) 0

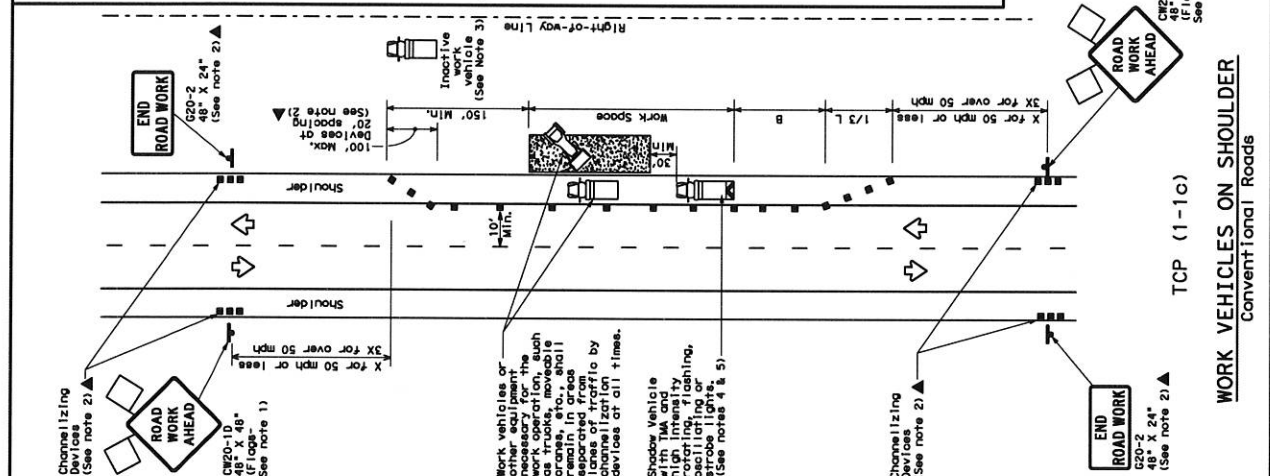
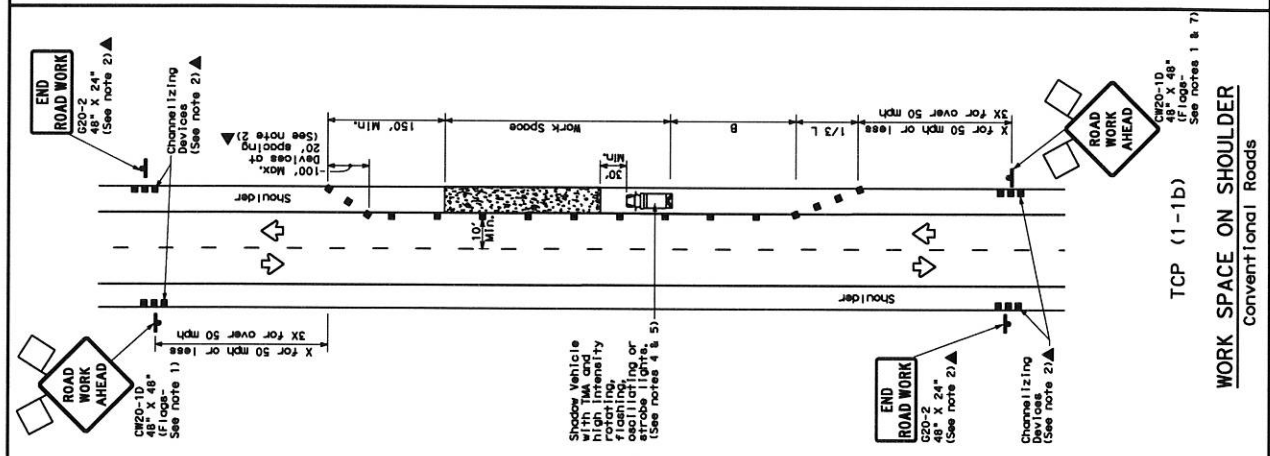
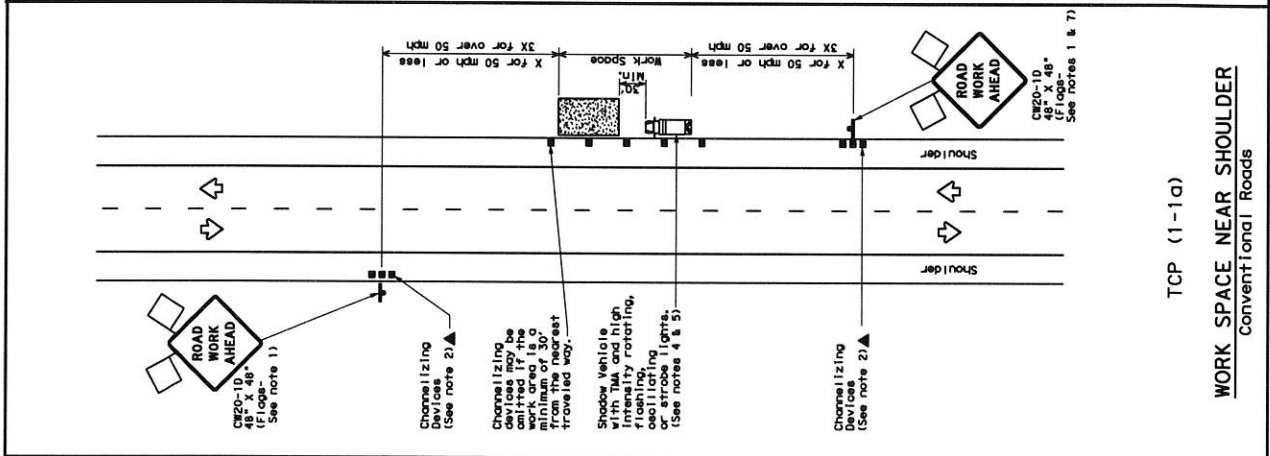
TO: PRINTS 5 PRINT NO. 5  
 NPA/NNX: 281-282 PRT:281232  
 EXCH: RICH-RDSE  
 TAX DIST.  
 GEO LOC.  
 ENGR. DRAWN  
 TELEPHONE NO. ( ) -  
 REC. REF.  
 MAP REF.  
 SCALE  
 ISSUE DATE: 08/11/2016  
 PROJ TITLE  
 REV. NUMBER  
 DATE REV.

---Proprietary---  
 Not for use or disclosure outside the AT&T companies except under written agreement.

CONTRACTOR NOTE:  
 PLACE STEEL CAP  
 FIBER HANDHOLE

PLACE FIBER 14\"/>

PLACE FIBER 14\"/>



**LEGEND**

Channelizing Devices	Type 3 Barricade	Channelizing Devices
Truck Mounted Attenuator (TMA)	Truck Mounted Attenuator (TMA)	
Portable Changeable Message Sign (PCMS)	Trailer Mounted Flashing Arrow Board	Portable Changeable Message Sign (PCMS)
Traffic Flow	Sign	Traffic Flow
Flagger	Flag	Flagger

Posted Speed	Formula	Minimum Taper Lengths	Suggested Max (min) Spacing of Channelizing Devices	Minimum Sign Spacing	Suggested Buffer Spacing
30	$L = 150' - 11' - 12'$	On a tangent	On a tangent	On a tangent	On a tangent
35	$L = 150' - 165' - 180'$	On a tangent	On a tangent	On a tangent	On a tangent
40	$L = 150' - 225' - 245'$	On a tangent	On a tangent	On a tangent	On a tangent
45	$L = 150' - 295' - 320'$	On a tangent	On a tangent	On a tangent	On a tangent
50	$L = 150' - 350' - 400'$	On a tangent	On a tangent	On a tangent	On a tangent
55	$L = 150' - 400' - 450'$	On a tangent	On a tangent	On a tangent	On a tangent
60	$L = 150' - 450' - 500'$	On a tangent	On a tangent	On a tangent	On a tangent
65	$L = 150' - 500' - 550'$	On a tangent	On a tangent	On a tangent	On a tangent
70	$L = 150' - 550' - 600'$	On a tangent	On a tangent	On a tangent	On a tangent
75	$L = 150' - 600' - 650'$	On a tangent	On a tangent	On a tangent	On a tangent

\* Conventional Roads Only  
\*\* Taper lengths have been rounded off.  
L=Length of taper (FT) rearward or offset (FT) S=Posted Speed(MPH)

**TYPICAL USAGE**

MOBILE	SURVEY DURATION	STATIONARY	STATIONARY	LONG TERM STATIONARY

- GENERAL NOTES**
- Flags attached to signs where shown are REQUIRED.
  - All traffic control devices illustrated are REQUIRED, except those indicated otherwise. Signs and devices are to be placed in the plans, or for routine maintenance work, when approved by the Engineer.
  - Inactive work vehicles or other equipment should be parked near the right-of-way line and not parked on the paved shoulder.
  - Shadow vehicles with TMA and high intensity rotating, oscillating or strobe lights should be positioned 30 to 100 feet in advance of the area of exposure without adversely affecting the performance or quality of the work. If workers are no longer present but road or work conditions require the traffic control to remain in place, Type 3 Barricades or other channelizing devices should be used to protect the work area.
  - Additional Shadow Vehicles with TMA may be positioned off the paved surfaces, next to those shown in order to protect wider work spaces.
  - See TCP (1-1) for shoulder work on divided highways, expressway and freeway/shoulder work.
  - "ROAD WORK AHEAD" signs may be used in place of CR20-10 roadways.

For construction or maintenance contract work, specific project requirements for shadow vehicles can be found in the project GENERAL NOTES for Item 502, Barricades, Signs and Traffic Handling.

Texas Department of Transportation  
Traffic Operations Division

**TRAFFIC CONTROL PLAN**  
**CONVENTIONAL ROAD**  
**SHOULDER WORK**

TCP (1-1) - 12

REVISED: 1-12  
REVISED: 8-96  
REVISED: 4-94

DATE: \_\_\_\_\_ FILE: \_\_\_\_\_