

REVIEW BY FORT BEND COUNTY COMMISSIONERS COURT

On this 13th day of September, 2016, Commissioners Court came on to be heard and reviewed the accompanying notice of Consolidated Communications Job Location Big Island Road, Needville, TX 77461 Date 6/24/2004 Bond No. 104326319, Permit No. 2016-9209 to make use of certain Fort Bend County property subject to, "A Revised Order Regulating the Laying, Construction, Maintenance, and Repair of Buried Cables, Conduits, and Pole Lines, In, Under, Across or Along Roads, Streets, Highways, and Drainage Ditches in Fort Bend County, Texas, Under the Jurisdiction of the Commissioners Court of Fort Bend County, Texas," as passed by the Commissioners Court of Fort Bend County, Texas the 3rd day of August, 1987, recorded in Volume _____ of the Minutes of the Commissioners Court of Fort Bend County, Texas, to the extent that such order is not inconsistent with Article 1436a, Vernon's Texas Civil Statutes. Upon Motion of Commissioner _____, seconded by Commissioner _____, duly put and carried, it is ORDERED, ADJUDGED AND DECREED that said notice of said above purpose is hereby acknowledged by the Commissioners Court of Fort Bend County, Texas, and that said notice be placed on record according to the regulation order thereof.

Notes:

1. Evidence of review by the Commissioners Court must be kept on the job site and failure to do so constitutes grounds for job shutdown.
2. Written notices are required:
 - a. 48 hours in advance of construction start up, and
 - b. when construction is completed and ready for final inspection
 Mail notices to: Permit Administrator
 Fort Bend County Engineering
 301 Jackson Street
 Richmond, Texas 77469
 281-633-7500
3. This permit expires one (1) year from date of permit if construction has not commenced.

By: Charles O. [Signature]
County Engineer

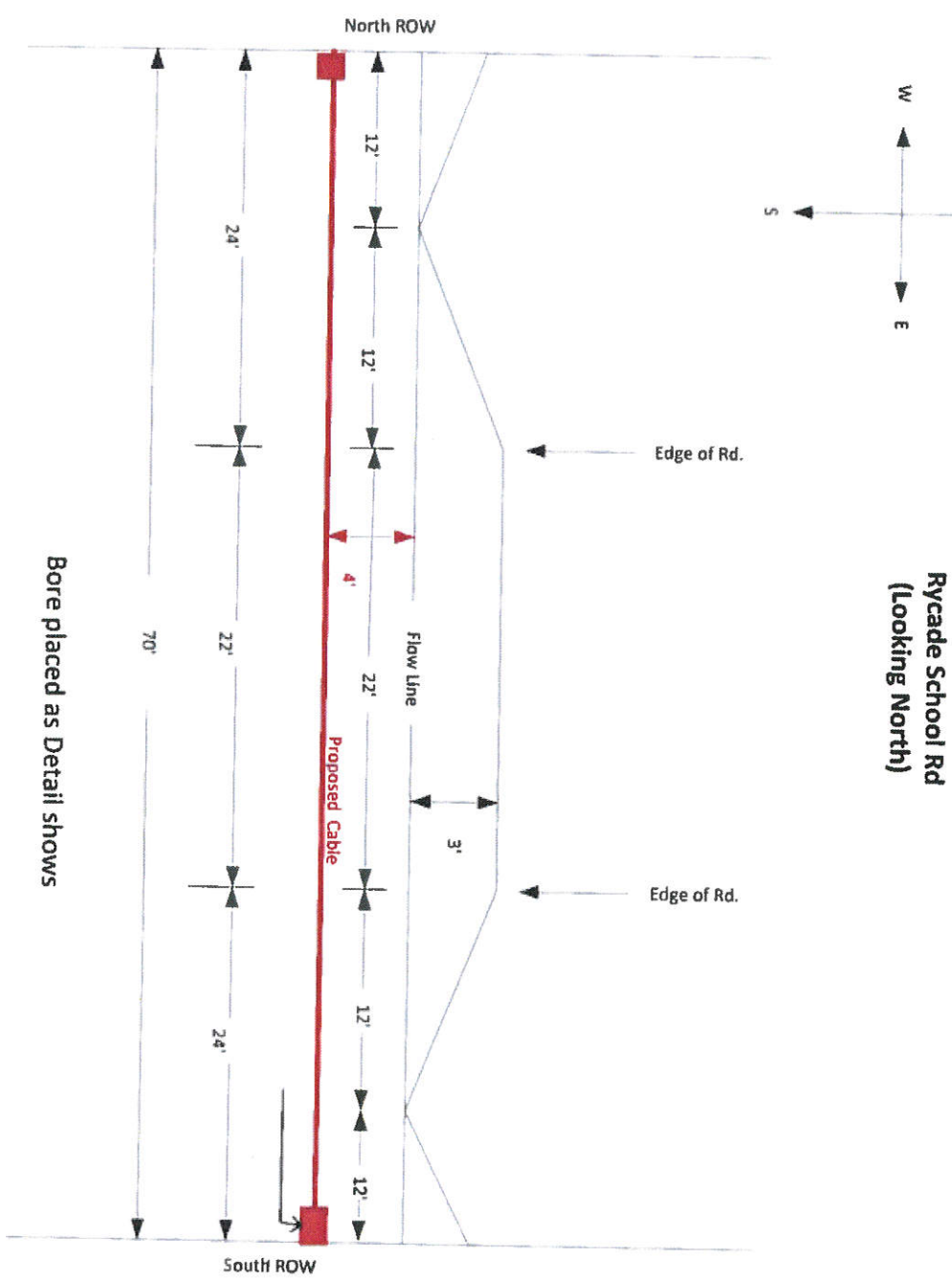
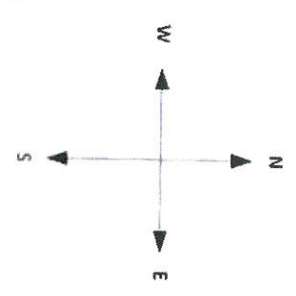
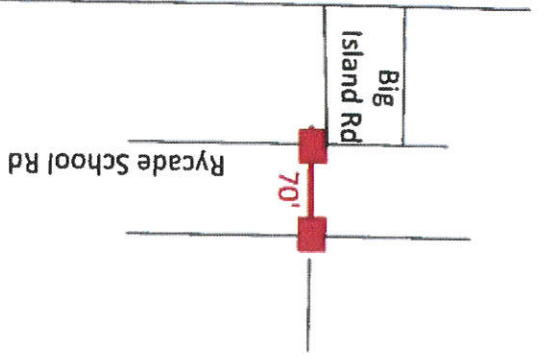
Presented to Commissioners Court and approved.
Recorded in Volume _____

By: N/A
Drainage District Engineer/Manager

Minutes of Commissioners Court

Clerk of Commissioners Court

By: _____
Deputy

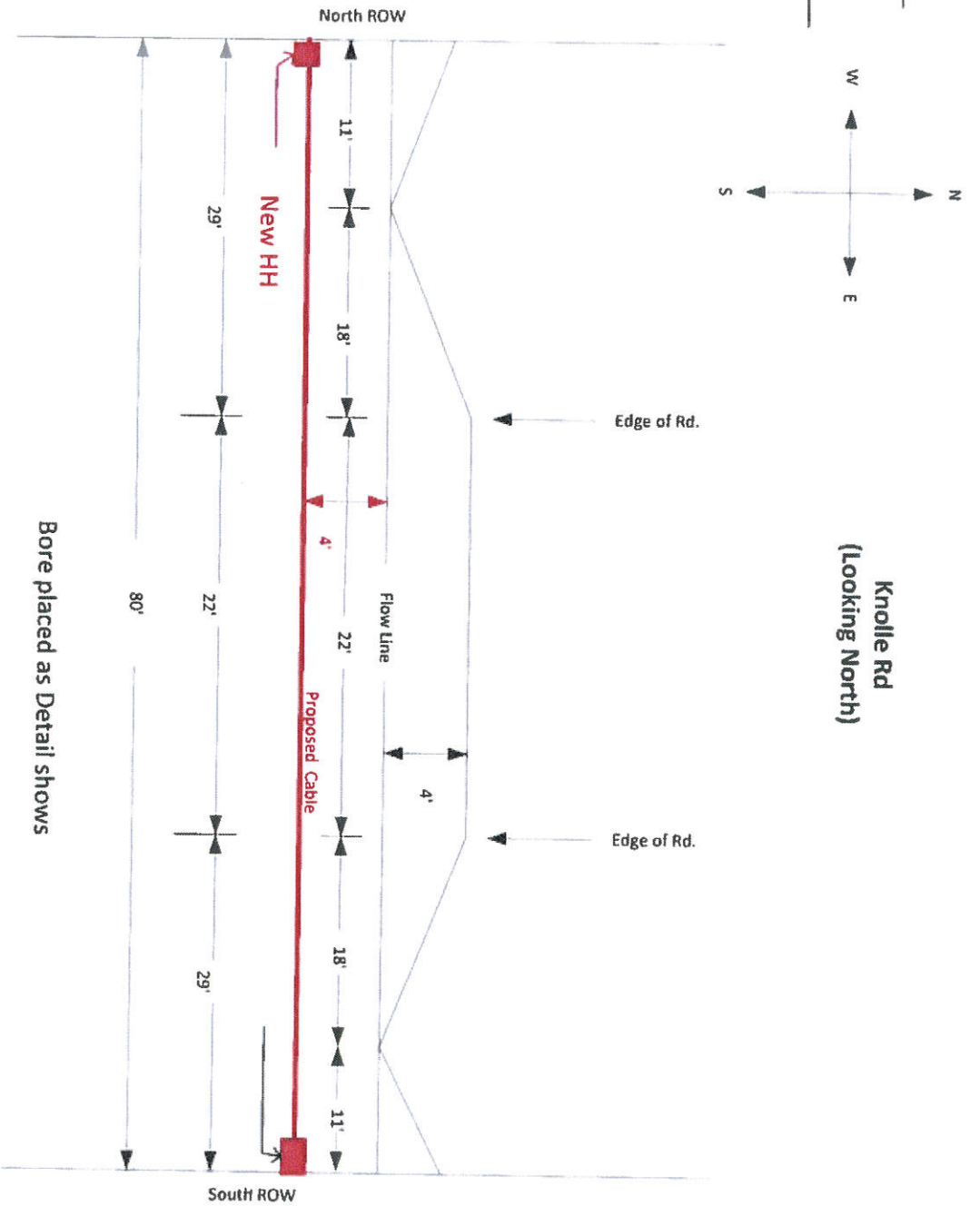
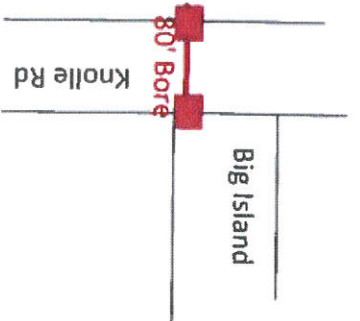


**CCI Proposes to Place a New Line under Rycade School Rd at Big Island Rd.
At Depth of 48" below Flow line of Ditch.**

Bore placed as Detail shows



Project Description:			
Drawn By:	Rob Rychlik	Completed By:	
Date Drawn:	8-21-16	Date Completed:	
Date Issued:	8-21-16	Attachment C	

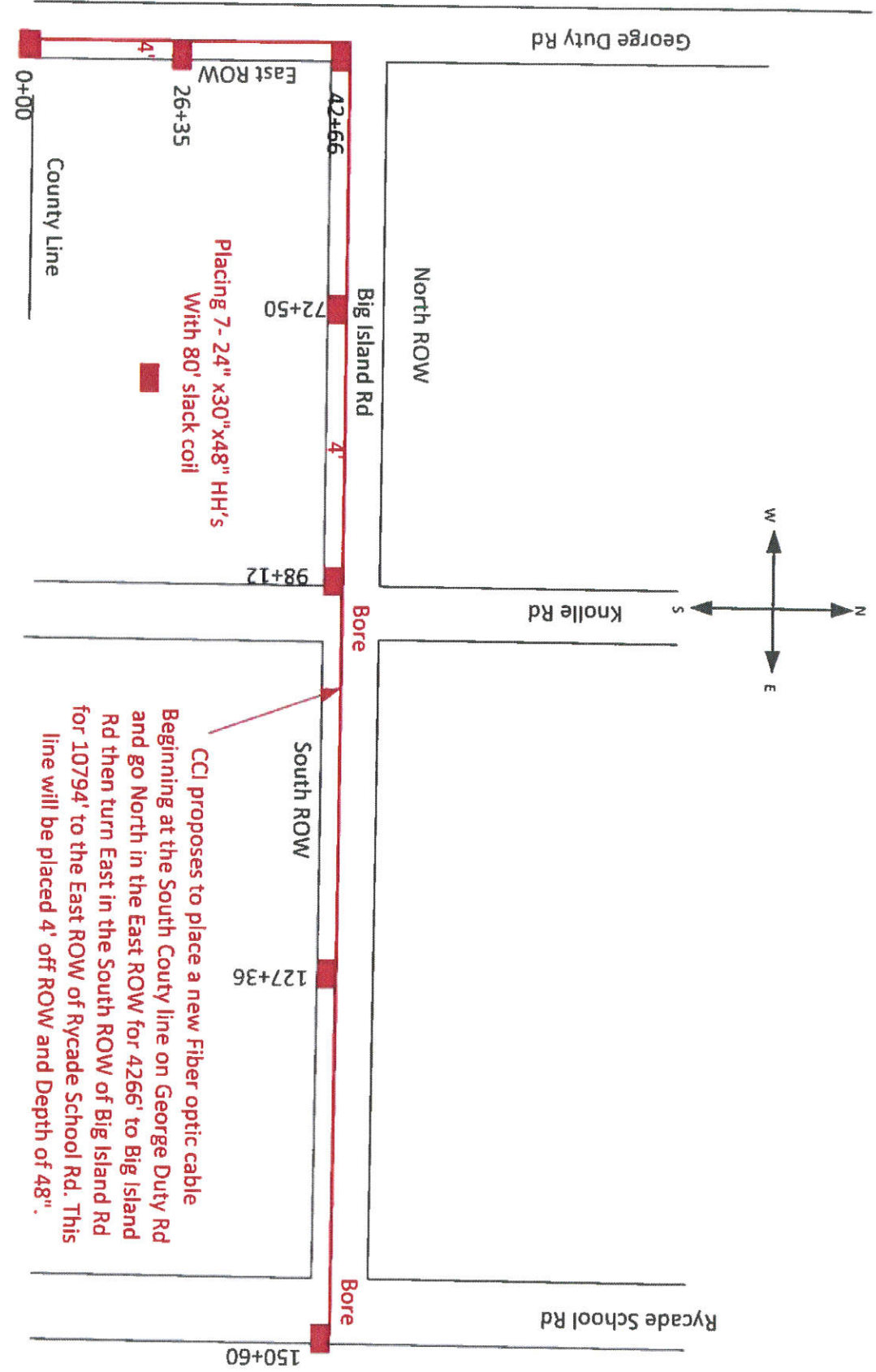
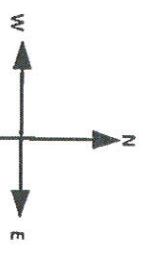


Bore placed as Detail shows

CCI Proposes to Place a New Line under Knolle Rd at Big Island Rd.
 At Depth of 48" below Flow line of Ditch.



Project Description:		Completed By:	
Drawn By:	Rob Rychlik	Date Completed:	
Date Drawn:	8-21-16	Date Completed:	
Date Issued:	8-21-16	Attachment B	



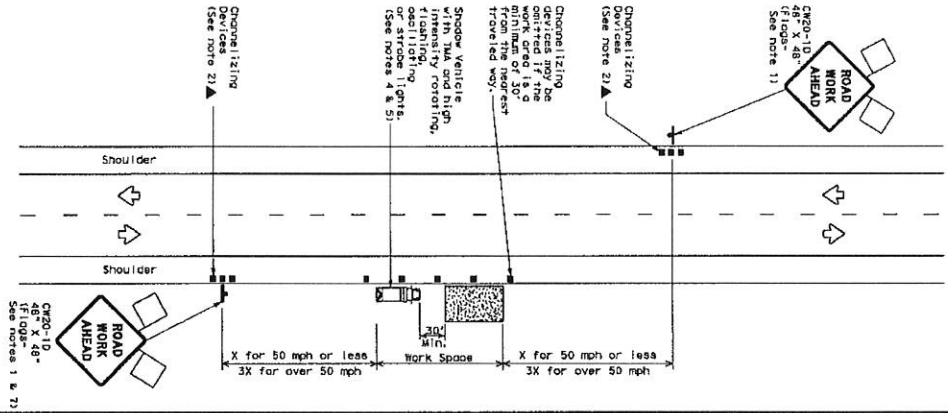
Project Description:		15NDV16800	
Drawn By:	Robert Rychlik	Completed By:	
Date Drawn:	8-21-16	Date Completed:	
Date Issued:	8-21-16	Attachment A	

DISCLAIMER: The use of this standard is governed by the "Texas Engineering Practice Act". No warranty of any kind is made by TxDOT for any purpose whatsoever. TxDOT assumes no responsibility for the conversion of this standard to other formats or for inaccurate results or damages resulting from its use.

DATE: FILE:

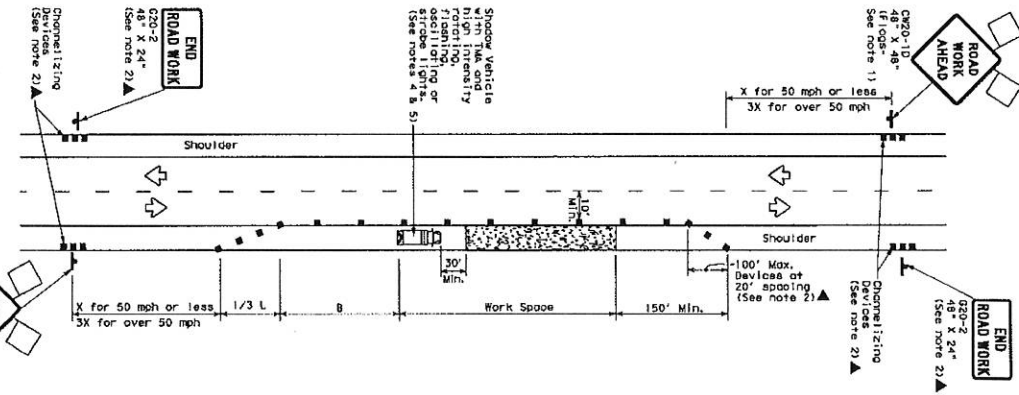
WORK SPACE NEAR SHOULDER
Conventional Roads

TCP (1-1)(d)



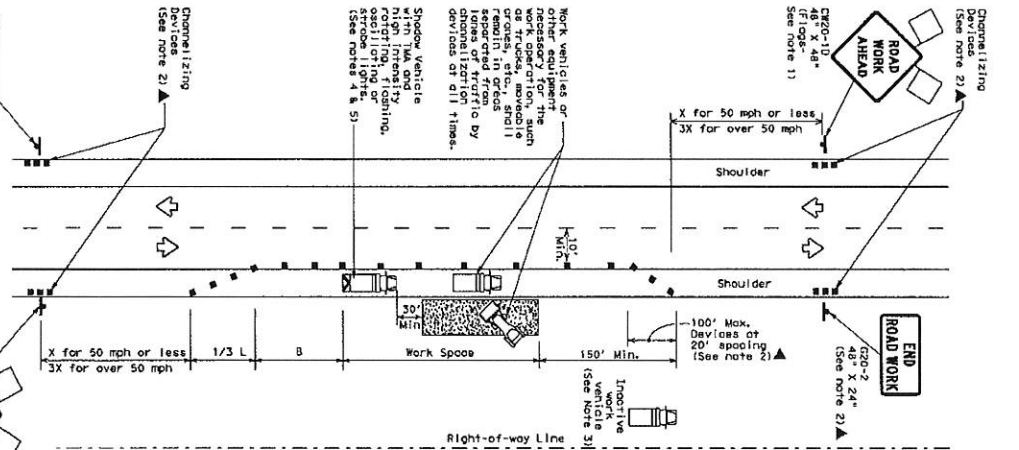
WORK SPACE ON SHOULDER
Conventional Roads

TCP (1-1)(b)



WORK VEHICLES ON SHOULDER
Conventional Roads

TCP (1-1)(c)



Right-of-way Line

LEGEND

	Channelizing Devices
	Heavy Work Vehicle
	Traffic Flow
	Floodgates

Posting Formula	Minimum Tower Lengths	Suggested Vertical Spacing of Channelizing Tower	Minimum Spacing Between Towers	Suggested Longitudinal Spacing Between Towers
30	150'	15'	30'	120'
35	205'	225'	35'	160'
40	265'	295'	40'	240'
45	325'	355'	45'	320'
50	385'	415'	50'	400'
55	445'	475'	55'	480'
60	505'	535'	60'	560'
65	565'	595'	65'	640'
70	625'	655'	70'	720'
75	685'	715'	75'	800'

X: Conventional Roads Only
* Tower spacing has been rounded off.
** Length of Tower (FT) x Width of Offset (FT) = Stressed Speed (MPH)

TYPICAL USAGE

MOBILE DURATION	SHORT TERM STATIONARY	INTERMEDIATE TERM STATIONARY	LONG TERM STATIONARY

GENERAL NOTES

- Flows obtained to signs where shown are REQUIRED.
- All traffic control devices illustrated are REQUIRED, except those denoted with the triangle symbol may be omitted when stated elsewhere in the plans, or for routine maintenance work, when approved by the project engineer.
- Inactive work vehicles or other equipment should be parked near the right-of-way line and not parked on the paved shoulder.
- A shadow vehicle with a TMA should be used anytime it can be positioned to protect the work area. The shadow vehicle should be positioned to remain in place. Type 3 Barricades or other channelizing devices may be substituted for the shadow vehicle when approved off the posted surface, next to those shown in order to protect wider work zones.
- See TPC(5-1) for shoulder work on divided highways, expressways and freeways.
- CHANNELIZING signs for shoulder work on conventional roadways.

For construction or maintenance contract work, applicable project requirements for shadow vehicles can be found in the project GENERAL NOTES for Item 502, Barricades, Signs and Traffic Modeling.

Texas Department of Transportation
Traffic Operations Division

TRAFFIC CONTROL PLAN
CONVENTIONAL ROAD SHOULDER WORK

TCP (1-1)-12

DATE: 12/15/11	FILE: 131
DATE: 12/15/11	FILE: 131