



Fort Bend County Engineering
FORT BEND COUNTY, TEXAS

Richard W. Stolleis, P.E.
County Engineer

August 19, 2016

Commissioner W. A. "Andy" Meyers
Fort Bend County Precinct 3
22333 Grand Corner Drive
Katy, Texas 77494

**RE: Truck prohibition on Pitts Road
DO NOT STOP ON TRACKS signs on Pitts Road and Harlem Road**

Dear Commissioner Meyers:

The Union Pacific Railroad (UP) is undertaking an initiative, their Crossing Assessment Process (CAP), to review of safety at all grade crossings throughout its network nationwide. As part of this process, UP has identified grade crossings of two Fort Bend County roads where regulatory signing improvements could help reduce the incidence of vehicles stopping on the tracks.

The Fort Bend County Engineering Department has completed and recommends approval of the traffic control plans to install "DO NOT STOP ON TRACKS" signs on the Pitts Road and Harlem Road crossings of UP's Glidden Subdivision immediately north of US 90A. Additionally, the Truck Prohibition sign that is currently located approximately 700 feet north of US 90A on northbound Pitts Road will be relocated to between the UP tracks and US 90A.

The public hearing date for acceptance of the plans will be scheduled on the next available Commissioner's Court Agenda. Copies of the traffic control plans and UP's CAP recommendations are attached for your review. If you have any questions please do not hesitate to contact me at 281-633-7528 or chris.debaillon@fortbendcountytexas.gov.

Regards,

Chris Debaillon, PE, PTOE
Assistant County Engineer - Traffic

CD/mjs

Attachment

cc: Judge Robert E. Hebert, County Judge
Marc Grant - FBC Road & Bridge
Brian Fields - Signage Department
Richard Zientek – Union Pacific Railroad - RichardZientek@up.com
File

301 Jackson St., 4th Floor | Richmond, TX 77469
Phone 281-633-7500

DOT	SUBDIVISION	MP	STATE	COUNTY	CITY	STREET
743713K	GLIDDEN SUB	29.59	TX	FORT BEND	SUGAR LAND	HARLEM ROAD
TIER	1					

KEY DRIVER STATISTICS:	15 Vehicle on Track Reports
	40 Trains per Day

8.0 Lack of signage may contribute to improper traversal of crossing
16.0 Vehicles queuing across crossing
28.0 Motorist noncompliance with traffic laws, signage, or signals



RECOMMENDATIONS:	
1	Install Do Not Stop on Tracks Sign for SB Traffic
2	Target Enforcement Motorists Stopped on Tracks

DOT	SUBDIVISION	MP	STATE	COUNTY	CITY	STREET
743716F	GLIDDEN SUB	30.81	TX	FORT BEND	SUGAR LAND	PITTS ROAD
TIER	1					

KEY DRIVER STATISTICS:

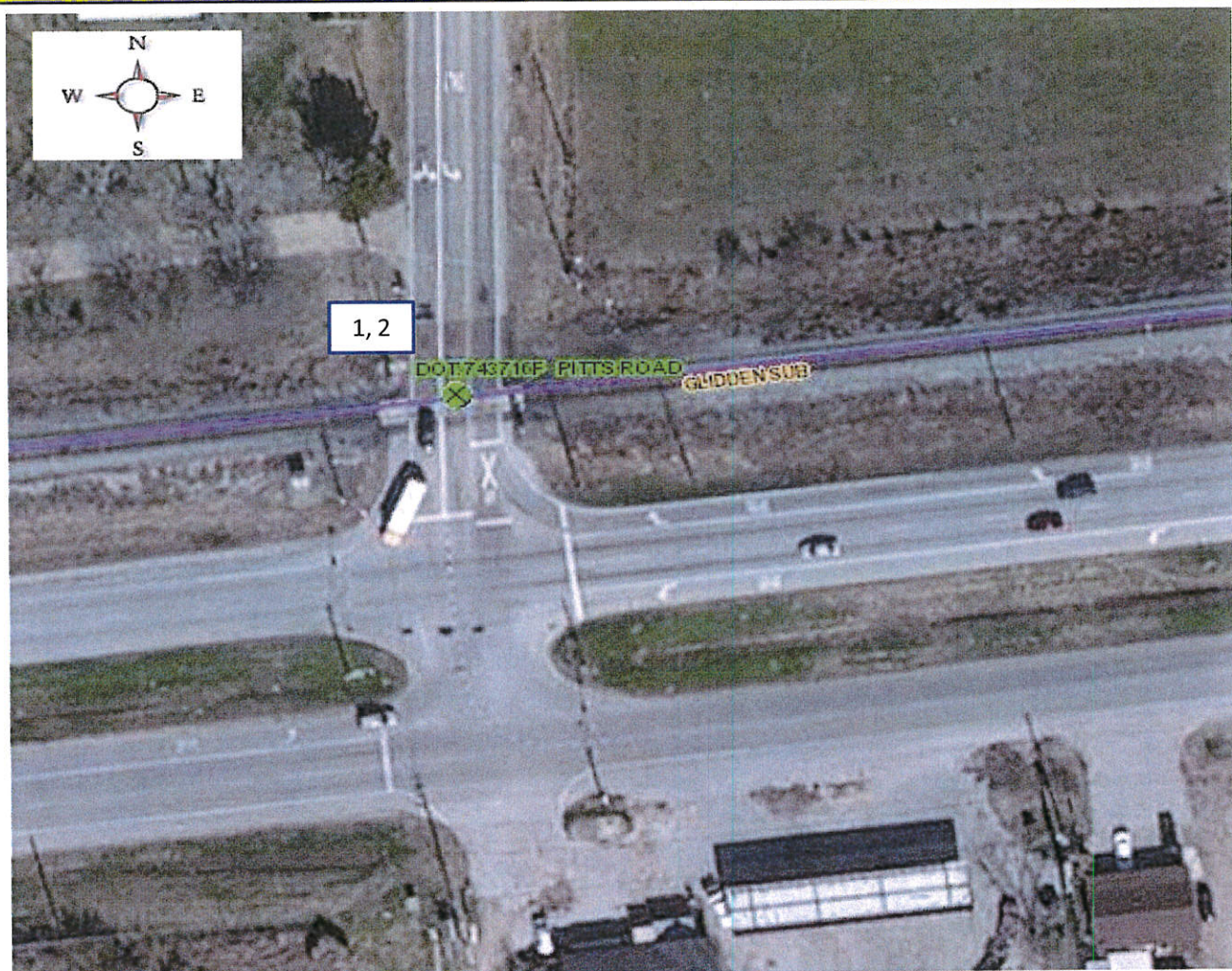
6650 AADT

40 Trains per Day

8.0 Lack of signage may contribute to improper traversal of crossing

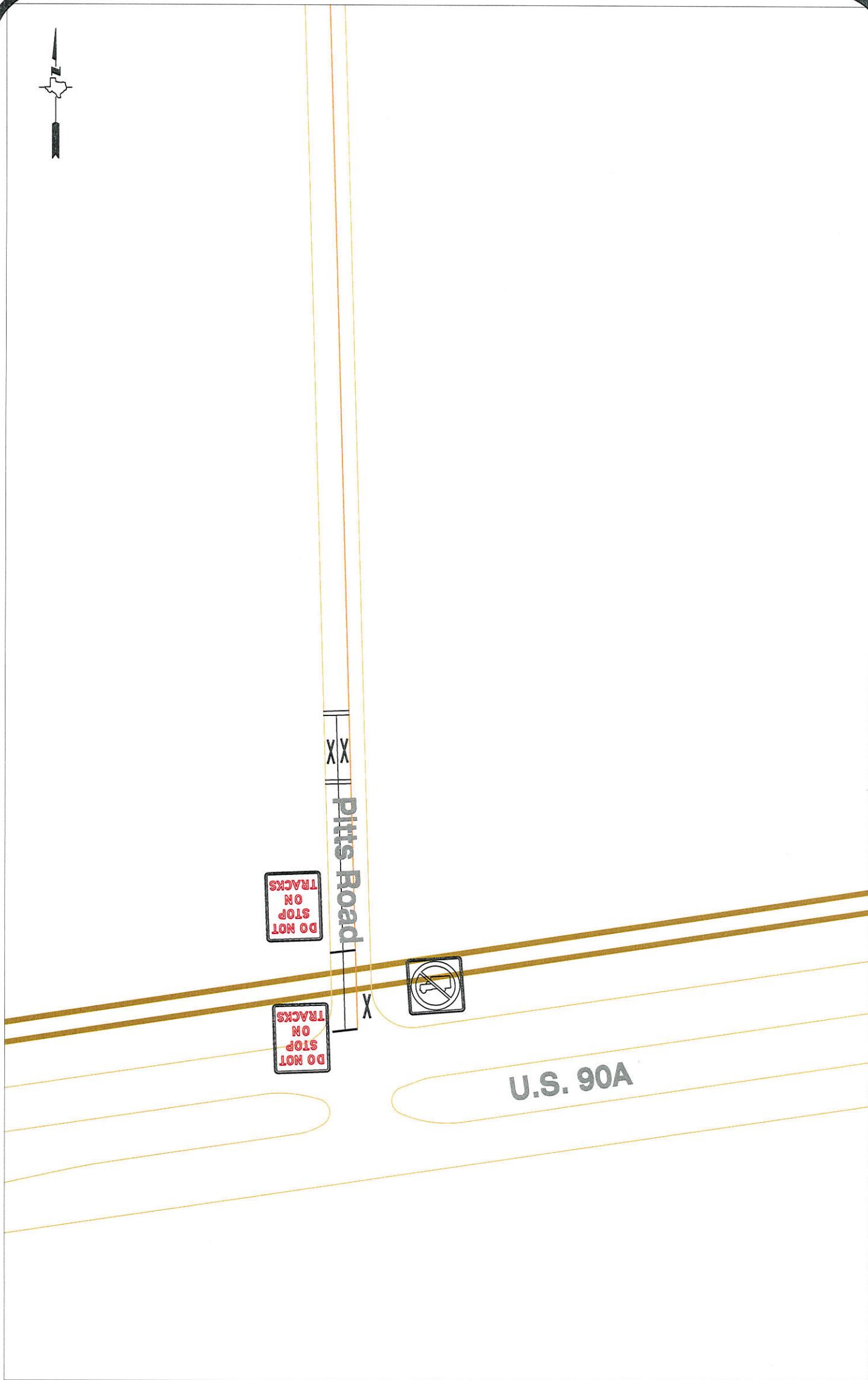
9.0 Driver not checking ground clearance before proceeding, causing vehicle to become stuck on tracks

16.0 Vehicles queuing across crossing



RECOMMENDATIONS:

- 1 Install Do Not Stop on Tracks Sign for SB Traffic
- 2 Prohibit Trucks: No Truck Route



Note:

The purpose of this traffic control plan is to revise traffic control for the intersection of Pitts Road at Highway 90A with the addition of "Do Not Stop On Tracks" signs (R8-8) as indicated on the drawing.

Drawn By: L. Brdecka

Date: 8-19-16

Approved By: Chris Deballion, PE PTOE

Date: *CD* 8/19/16

Scale

1" = 200'-0"

**Pitts Road at Highway 90A
(Revised) Control Map and
Traffic Sign Layout**

Fort Bend County Engineering Dept.
301 Jackson Street
Richmond, Texas 77469



Harlem Road

Harlem Road

Harlem - 100' R.O.W.



U.S. 90A

U.S. 90A

Note:

The purpose of this traffic control plan is to revise traffic control for the intersection of Harlem Road at Highway 90A with the addition of "Do Not Stop On Tracks" signs (R8-8) as indicated on the drawing.

Drawn By: L. Brdecka

Date: 8-19-16

Approved By: Chris Deballon, PE PTOE

Date: 8/19/16

Scale

1" = 200'-0"

**Harlem Road at Highway 90A
(Revised) Control Map and
Traffic Sign Layout**

Fort Bend County Engineering Dept.
301 Jackson Street
Richmond, Texas 77469