

PLAT RECORDING SHEET

PLAT NAME: Mission Trace, Sec. 6

PLAT NO: _____

ACREAGE: 21.170

LEAGUE: A. M. Clopper Survey

ABSTRACT NUMBER: 152

NUMBER OF BLOCKS: 2

NUMBER OF LOTS: 92

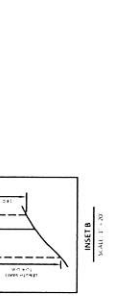
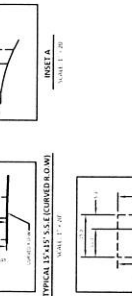
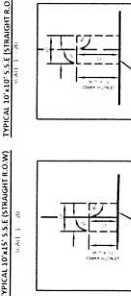
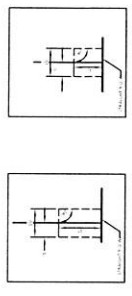
NUMBER OF RESERVES: 4

OWNERS: D. R. Horton – Texas, L.T.D.

(DEPUTY CLERK)

LINE	BEARING	LENGTH
U1	S89°25'00"W	48.51
U2	S29°44'27"E	159.23
U3	S42°47'51"E	5.12
U4	S07°31'07"W	213.19
U5	S89°25'00"W	130.00
U6	S38°25'35"W	102.06
U7	S18°39'07"W	86.06
U8	S27°44'37"E	48.94
U9	S48°17'15"W	169.38
U10	S41°24'35"E	73.37
U11	S41°24'35"E	172.98
U12	S107°39'07"W	107.77
U13	S07°31'07"W	107.77
U14	S07°31'07"W	107.77
U15	S17°30'11"E	113.67
U16	S00°33'57"E	30.60
U17	S48°35'23"E	209.90
U18	S06°31'17"E	406.00
U19	S04°32'02"W	203.00
U20	S06°33'57"E	294.25
U21	S06°33'57"E	13.84
U22	S78°59'40"E	209.27

CURVA	DATA	BEARING	LENGTH	BEARING	LENGTH	CURVED BEARING	CURVED LENGTH
C1	017°25'	106.00	22.31	111°50'	807.48	107.48	22.31
C2	87°51'54"	35.96	51.67	13°21'	576.14	101.18	48.26
C3	017°25'	73.56	3.56	1°19'	534.30	73.56	3.56
C4	174.00	783.30	31.80	25.90	812.40	783.30	31.80
C5	88°25'46"	55.00	51.97	33°35'	809.30	55.00	51.97
C6	4°25'39"	260.00	152.25	76.36	851.31	260.00	152.25
C7	17°48'17"	199.00	128.55	68°17'	864.17	199.00	128.55
C8	91°35'33"	35.00	68.06	80.46	811.39	35.00	68.06
C9	4°30'39"	810.00	696.41	352.38	501.10	810.00	696.41
C10	11°14'56"	178.00	150.45	175.79	865.51	178.00	150.45
C11	8°26'48"	1785.00	262.89	111.71	875.44	1785.00	262.89
C12	48°30'11"	50.00	42.13	22.57	875.47	50.00	42.13
C13	48°26'00"	50.00	42.62	22.07	627.96	50.00	42.62
C14	10°13'17"	1600.00	214.06	109.12	622.58	1600.00	214.06
C15	7°35'54"	1000.00	135.67	66.81	509.44	1000.00	135.67
C16	80°41'00"	50.00	282.64	127.13	169.75	50.00	282.64
C17	5°30'50"	409.00	389.24	49.30	311.12	409.00	389.24
C18	10°28'39"	1785.00	248.51	133.71	355.03	1785.00	248.51
C19	1°20'17"	1785.00	48.87	21.84	245.07	1785.00	48.87
C20	92°24'29"	30.00	48.89	31.49	538.23	30.00	48.89
C21	87°47'47"	26.00	18.11	24.06	931.84	26.00	18.11
C22	17°22'42"	1810.00	554.38	279.12	871.13	1810.00	554.38
C23	15°21'58"	26.00	14.96	7.42	860.59	26.00	14.96
C24	161°20'52"	50.00	140.87	104.46	351.32	50.00	140.87
C25	15°24'35"	26.00	13.91	7.16	351.32	26.00	13.91
C26	10°18'08"	1225.00	229.44	110.57	602.22	1225.00	229.44
C27	4°29'00"	975.00	76.29	38.17	695.12	975.00	76.29
C28	46°36'27"	25.00	20.14	10.77	520.15	25.00	20.14
C29	278°26'42"	30.00	243.16	44.25	885.21	30.00	243.16
C30	40°45'46"	26.00	31.65	11.55	827.50	26.00	31.65
C31	4°20'02"	105.00	77.55	18.79	862.21	105.00	77.55
C32	10°13'17"	175.00	209.62	105.69	802.25	175.00	209.62
C33	5°27'04"	25.00	42.47	24.13	805.23	25.00	42.47
C34	9°27'54"	1760.00	211.98	107.12	526.44	1760.00	211.98
C35	82°38'27"	25.00	18.06	21.98	311.82	25.00	18.06
C36	25°44'39"	525.00	135.89	119.97	501.18	525.00	135.89
C37	5°40'06"	775.00	78.02	39.84	531.73	775.00	78.02
C38	48°12'23"	25.00	21.02	11.18	511.95	25.00	21.02
C39	278°22'46"	50.00	241.19	44.72	879.40	50.00	241.19
C40	48°11'23"	25.00	23.07	11.18	804.25	25.00	23.07
C41	5°40'06"	825.00	81.96	41.52	813.21	825.00	81.96
C42	21°42'47"	475.00	396.59	99.72	604.14	475.00	396.59
C43	102°34'38"	25.00	44.83	11.29	868.99	25.00	44.83
C44	778°0'36"	1608.27	212.21	106.90	566.11	1608.27	212.21
C45	80°24'44"	25.00	19.50	25.16	517.71	25.00	19.50
C46	175°24'23"	50.00	133.86	110.76	599.10	50.00	133.86
C47	36°24'46"	25.00	29.85	23.18	878.92	25.00	29.85
C48	8°27'30"	1842.79	191.79	96.97	524.43	1842.79	191.79
C49	93°12'02"	25.00	40.67	18.44	509.13	25.00	40.67
C50	48°11'23"	25.00	21.02	11.18	565.98	25.00	21.02
C51	278°22'46"	50.00	241.19	44.72	548.71	50.00	241.19
C52	48°11'23"	25.00	21.02	11.18	817.70	25.00	21.02
C53	30°00'00"	25.00	39.27	15.90	866.62	25.00	39.27
C54	55°40'50"	25.00	24.27	13.66	520.73	25.00	24.27
C55	275°25'52"	50.00	240.35	45.48	849.71	50.00	240.35
C56	10°24'12"	25.00	17.41	9.06	669.14	25.00	17.41
C57	9°17'51"	1810.00	109.53	105.14	603.11	1810.00	109.53
C58	87°50'25"	25.00	18.47	24.07	841.20	25.00	18.47
C59	80°14'18"	10.00	48.89	31.82	829.52	10.00	48.89
C60	12°10'21"	1840.00	768.25	117.79	573.10	1840.00	768.25
C61	1°44'41"	2000.00	24.25	21.38	809.14	2000.00	24.25
C62	4°12'02"	1340.00	294.09	117.58	551.42	1340.00	294.09



MISSION TRACE SEC 6
 A SUBDIVISION OF
21.170 ACRES
 LOCATED IN
 A.M. CLOPPER SURVEY A-152
 FORT BEND COUNTY, TEXAS

92 LOTS 2 BLOCKS 4 RESERVES

OWNER: D.R. HORTON - TEXAS, LTD.
 ENGINEER: **IDS Engineering Group**

MARCH 2016 IDS-DR-NO. 2016-009-00 SHEET 1 OF 1