

**PLAT RECORDING SHEET**

**PLAT NAME:** Harvest Green, Sec. 11

**PLAT NO:** \_\_\_\_\_

**ACREAGE:** 17.38

**LEAGUE:** William Morton One and One-Half League Grant

**ABSTRACT NUMBER:** 62

**NUMBER OF BLOCKS:** 2

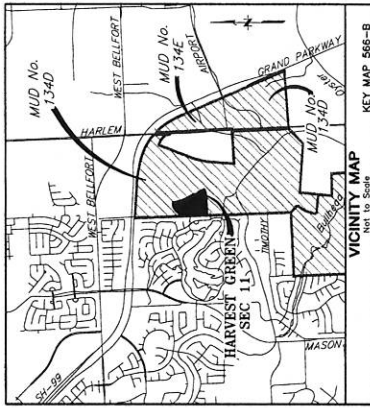
**NUMBER OF LOTS:** 60

**NUMBER OF RESERVES:** 3

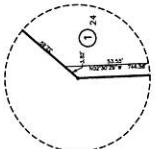
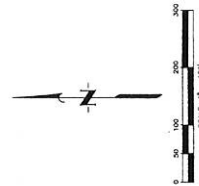
**OWNERS:** Grand Parkway 1358 LP, a Texas Limited Partnership

\_\_\_\_\_  
(DEPUTY CLERK)





KEY MAP 566-B  
Not to Scale



LOT	ACRES	AREA
1	0.10	4,363.81
2	0.10	4,363.81
3	0.10	4,363.81
4	0.10	4,363.81
5	0.10	4,363.81
6	0.10	4,363.81
7	0.10	4,363.81
8	0.10	4,363.81
9	0.10	4,363.81
10	0.10	4,363.81
11	0.10	4,363.81
12	0.10	4,363.81
13	0.10	4,363.81
14	0.10	4,363.81
15	0.10	4,363.81
16	0.10	4,363.81
17	0.10	4,363.81
18	0.10	4,363.81
19	0.10	4,363.81
20	0.10	4,363.81
21	0.10	4,363.81
22	0.10	4,363.81
23	0.10	4,363.81
24	0.10	4,363.81
25	0.10	4,363.81
26	0.10	4,363.81
27	0.10	4,363.81
28	0.10	4,363.81
29	0.10	4,363.81
30	0.10	4,363.81
31	0.10	4,363.81
32	0.10	4,363.81
33	0.10	4,363.81
34	0.10	4,363.81
35	0.10	4,363.81
36	0.10	4,363.81
37	0.10	4,363.81
38	0.10	4,363.81
39	0.10	4,363.81
40	0.10	4,363.81
41	0.10	4,363.81
42	0.10	4,363.81
43	0.10	4,363.81
44	0.10	4,363.81
45	0.10	4,363.81
46	0.10	4,363.81
47	0.10	4,363.81
48	0.10	4,363.81
49	0.10	4,363.81
50	0.10	4,363.81
51	0.10	4,363.81
52	0.10	4,363.81
53	0.10	4,363.81
54	0.10	4,363.81
55	0.10	4,363.81
56	0.10	4,363.81
57	0.10	4,363.81
58	0.10	4,363.81
59	0.10	4,363.81
60	0.10	4,363.81
61	0.10	4,363.81
62	0.10	4,363.81
63	0.10	4,363.81
64	0.10	4,363.81
65	0.10	4,363.81
66	0.10	4,363.81
67	0.10	4,363.81
68	0.10	4,363.81
69	0.10	4,363.81
70	0.10	4,363.81
71	0.10	4,363.81
72	0.10	4,363.81
73	0.10	4,363.81
74	0.10	4,363.81
75	0.10	4,363.81
76	0.10	4,363.81
77	0.10	4,363.81
78	0.10	4,363.81
79	0.10	4,363.81
80	0.10	4,363.81
81	0.10	4,363.81
82	0.10	4,363.81
83	0.10	4,363.81
84	0.10	4,363.81
85	0.10	4,363.81
86	0.10	4,363.81
87	0.10	4,363.81
88	0.10	4,363.81
89	0.10	4,363.81
90	0.10	4,363.81
91	0.10	4,363.81
92	0.10	4,363.81
93	0.10	4,363.81
94	0.10	4,363.81
95	0.10	4,363.81
96	0.10	4,363.81
97	0.10	4,363.81
98	0.10	4,363.81
99	0.10	4,363.81
100	0.10	4,363.81

CHUCK	TRACT	ACRES	AREA
1	1	0.10	4,363.81
2	2	0.10	4,363.81
3	3	0.10	4,363.81
4	4	0.10	4,363.81
5	5	0.10	4,363.81
6	6	0.10	4,363.81
7	7	0.10	4,363.81
8	8	0.10	4,363.81
9	9	0.10	4,363.81
10	10	0.10	4,363.81
11	11	0.10	4,363.81
12	12	0.10	4,363.81
13	13	0.10	4,363.81
14	14	0.10	4,363.81
15	15	0.10	4,363.81
16	16	0.10	4,363.81
17	17	0.10	4,363.81
18	18	0.10	4,363.81
19	19	0.10	4,363.81
20	20	0.10	4,363.81
21	21	0.10	4,363.81
22	22	0.10	4,363.81
23	23	0.10	4,363.81
24	24	0.10	4,363.81
25	25	0.10	4,363.81
26	26	0.10	4,363.81
27	27	0.10	4,363.81
28	28	0.10	4,363.81
29	29	0.10	4,363.81
30	30	0.10	4,363.81
31	31	0.10	4,363.81
32	32	0.10	4,363.81
33	33	0.10	4,363.81
34	34	0.10	4,363.81
35	35	0.10	4,363.81
36	36	0.10	4,363.81
37	37	0.10	4,363.81
38	38	0.10	4,363.81
39	39	0.10	4,363.81
40	40	0.10	4,363.81
41	41	0.10	4,363.81
42	42	0.10	4,363.81
43	43	0.10	4,363.81
44	44	0.10	4,363.81
45	45	0.10	4,363.81
46	46	0.10	4,363.81
47	47	0.10	4,363.81
48	48	0.10	4,363.81
49	49	0.10	4,363.81
50	50	0.10	4,363.81
51	51	0.10	4,363.81
52	52	0.10	4,363.81
53	53	0.10	4,363.81
54	54	0.10	4,363.81
55	55	0.10	4,363.81
56	56	0.10	4,363.81
57	57	0.10	4,363.81
58	58	0.10	4,363.81
59	59	0.10	4,363.81
60	60	0.10	4,363.81
61	61	0.10	4,363.81
62	62	0.10	4,363.81
63	63	0.10	4,363.81
64	64	0.10	4,363.81
65	65	0.10	4,363.81
66	66	0.10	4,363.81
67	67	0.10	4,363.81
68	68	0.10	4,363.81
69	69	0.10	4,363.81
70	70	0.10	4,363.81
71	71	0.10	4,363.81
72	72	0.10	4,363.81
73	73	0.10	4,363.81
74	74	0.10	4,363.81
75	75	0.10	4,363.81
76	76	0.10	4,363.81
77	77	0.10	4,363.81
78	78	0.10	4,363.81
79	79	0.10	4,363.81
80	80	0.10	4,363.81
81	81	0.10	4,363.81
82	82	0.10	4,363.81
83	83	0.10	4,363.81
84	84	0.10	4,363.81
85	85	0.10	4,363.81
86	86	0.10	4,363.81
87	87	0.10	4,363.81
88	88	0.10	4,363.81
89	89	0.10	4,363.81
90	90	0.10	4,363.81
91	91	0.10	4,363.81
92	92	0.10	4,363.81
93	93	0.10	4,363.81
94	94	0.10	4,363.81
95	95	0.10	4,363.81
96	96	0.10	4,363.81
97	97	0.10	4,363.81
98	98	0.10	4,363.81
99	99	0.10	4,363.81
100	100	0.10	4,363.81

- 1) The owner of the land on this plat is to be determined by the County Clerk, Harris County, Texas, at the time of the recording of this plat.
- 2) All block corners and other corners to be marked with iron pins or other suitable material.
- 3) The owner of the land on this plat is to be determined by the County Clerk, Harris County, Texas, at the time of the recording of this plat.
- 4) The owner of the land on this plat is to be determined by the County Clerk, Harris County, Texas, at the time of the recording of this plat.
- 5) All easements for utility lines are shown on this plat.
- 6) All building lines are shown on this plat.
- 7) The owner of the land on this plat is to be determined by the County Clerk, Harris County, Texas, at the time of the recording of this plat.
- 8) The owner of the land on this plat is to be determined by the County Clerk, Harris County, Texas, at the time of the recording of this plat.
- 9) There are no riparian easements shown on this plat.
- 10) The plat is subject to all laws, ordinances, rules, regulations, and orders of the City of Houston, Harris County, Texas, and the State of Texas.
- 11) Harvest Green SEC 11 has within its boundaries a 123 acre tract known as the "Harvest Green SEC 11 Tract" which is shown on the plat.
- 12) The plat is subject to all laws, ordinances, rules, regulations, and orders of the City of Houston, Harris County, Texas, and the State of Texas.
- 13) The plat is subject to all laws, ordinances, rules, regulations, and orders of the City of Houston, Harris County, Texas, and the State of Texas.
- 14) The plat is subject to all laws, ordinances, rules, regulations, and orders of the City of Houston, Harris County, Texas, and the State of Texas.
- 15) All easements for utility lines are shown on this plat.
- 16) All building lines are shown on this plat.
- 17) The owner of the land on this plat is to be determined by the County Clerk, Harris County, Texas, at the time of the recording of this plat.
- 18) The owner of the land on this plat is to be determined by the County Clerk, Harris County, Texas, at the time of the recording of this plat.
- 19) There are no riparian easements shown on this plat.
- 20) The plat is subject to all laws, ordinances, rules, regulations, and orders of the City of Houston, Harris County, Texas, and the State of Texas.
- 21) Harvest Green SEC 11 has within its boundaries a 123 acre tract known as the "Harvest Green SEC 11 Tract" which is shown on the plat.
- 22) The plat is subject to all laws, ordinances, rules, regulations, and orders of the City of Houston, Harris County, Texas, and the State of Texas.

RESTRICTED RESERVE "A"  
Restricted to Landscaping  
11,077.77 AC  
40,500 SQ FT

RESTRICTED RESERVE "B"  
Restricted to Landscaping  
1,350 AC  
50,500 SQ FT

RESTRICTED RESERVE "C"  
Restricted to Landscaping  
10,207.6 AC  
42,700 SQ FT

REMANINDER OF  
883.159 ACRE (TRACT I)  
GRAND PARKWAY 1358, LP  
FBCCT No. 2014037769

REMANINDER OF  
16.679 ACRES  
FORT BEND INDEPENDENT  
SCHOOL DISTRICT  
FBCCT No. 2014138392

REMANINDER OF  
883.159 ACRE (TRACT II)  
GRAND PARKWAY 1358, LP  
FBCCT No. 2014037769

DISTRICT NAME	TRACT NO.	ACRES	AREA
1	1	0.10	4,363.81
2	2	0.10	4,363.81
3	3	0.10	4,363.81
4	4	0.10	4,363.81
5	5	0.10	4,363.81
6	6	0.10	4,363.81
7	7	0.10	4,363.81
8	8	0.10	4,363.81
9	9	0.10	4,363.81
10	10	0.10	4,363.81
11	11	0.10	4,363.81
12	12	0.10	4,363.81
13	13	0.10	4,363.81
14	14	0.10	4,363.81
15	15	0.10	4,363.81
16	16	0.10	4,363.81
17	17	0.10	4,363.81
18	18	0.10	4,363.81
19	19	0.10	4,363.81
20	20	0.10	4,363.81
21	21	0.10	4,363.81
22	22	0.10	4,363.81
23	23	0.10	4,363.81
24	24	0.10	4,363.81
25	25	0.10	4,363.81
26	26	0.10	4,363.81
27	27	0.10	4,363.81
28	28	0.10	4,363.81
29	29	0.10	4,363.81
30	30	0.10	4,363.81
31	31	0.10	4,363.81
32	32	0.10	4,363.81
33	33	0.10	4,363.81
34	34	0.10	4,363.81
35	35	0.10	4,363.81
36	36	0.10	4,363.81
37	37	0.10	4,363.81
38	38	0.10	4,363.81
39	39	0.10	4,363.81
40	40	0.10	4,363.81
41	41	0.10	4,363.81
42	42	0.10	4,363.81
43	43	0.10	4,363.81
44	44	0.10	4,363.81
45	45	0.10	4,363.81
46	46	0.10	4,363.81
47	47	0.10	4,363.81
48	48	0.10	4,363.81
49	49	0.10	4,363.81
50	50	0.10	4,363.81
51	51	0.10	4,363.81
52	52	0.10	4,363.81
53	53	0.10	4,363.81
54	54	0.10	4,363.81
55	55	0.10	4,363.81
56	56	0.10	4,363.81
57	57	0.10	4,363.81
58	58	0.10	4,363.81
59	59	0.10	4,363.81
60	60	0.10	4,363.81
61	61	0.10	4,363.81
62	62	0.10	4,363.81
63	63	0.10	4,363.81
64	64	0.10	4,363.81
65	65	0.10	4,363.81
66	66	0.10	4,363.81
67	67	0.10	4,363.81
68	68	0.10	4,363.81
69	69	0.10	4,363.81
70	70	0.10	4,363.81
71	71	0.10	4,363.81
72	72	0.10	4,363.81
73	73	0.10	4,363.81
74	74	0.10	4,363.81
75	75	0.10	4,363.81
76	76	0.10	4,363.81
77	77	0.10	4,363.81
78	78	0.10	4,363.81
79	79	0.10	4,363.81
80	80	0.1	