

REVIEW BY FORT BEND COUNTY COMMISSIONERS COURT

On this 7th day of June, 2016, Commissioners Court came on to be heard and reviewed the accompanying notice of Darling Homes / CTC Concrete, Inc. Job Location 6210 Meadow Bluff Court, Richmond, TX 77406 Date 5/25/2016 Bond No. LSM0860226, Permit No. 2016-7373 to make use of certain Fort Bend County property subject to, "A Revised Order Regulating the Laying, Construction, Maintenance, and Repair of Buried Cables, Conduits, and Pole Lines, In, Under, Across or Along Roads, Streets, Highways, and Drainage Ditches in Fort Bend County, Texas, Under the Jurisdiction of the Commissioners Court of Fort Bend County, Texas," as passed by the Commissioners Court of Fort Bend County, Texas the 3rd day of August, 1987, recorded in Volume _____ of the Minutes of the Commissioners Court of Fort Bend County, Texas, to the extent that such order is not inconsistent with Article 1436a, Vernon's Texas Civil Statutes. Upon Motion of Commissioner _____, seconded by Commissioner _____, duly put and carried, it is ORDERED, ADJUDGED AND DECREED that said notice of said above purpose is hereby acknowledged by the Commissioners Court of Fort Bend County, Texas, and that said notice be placed on record according to the regulation order thereof.

Notes:

1. Evidence of review by the Commissioners Court must be kept on the job site and failure to do so constitutes grounds for job shutdown.
2. Written notices are required:
 - a. 48 hours in advance of construction start up, and
 - b. when construction is completed and ready for final inspection
 Mail notices to: Permit Administrator
 Fort Bend County Engineering
 301 Jackson Street
 Richmond, Texas 77469
 281-633-7500
3. This permit expires one (1) year from date of permit if construction has not commenced.

By: 
County Engineer

Presented to Commissioners Court and approved.
Recorded in Volume _____

Minutes of Commissioners Court

By: N/A
Drainage District Engineer/Manager

Clerk of Commissioners Court

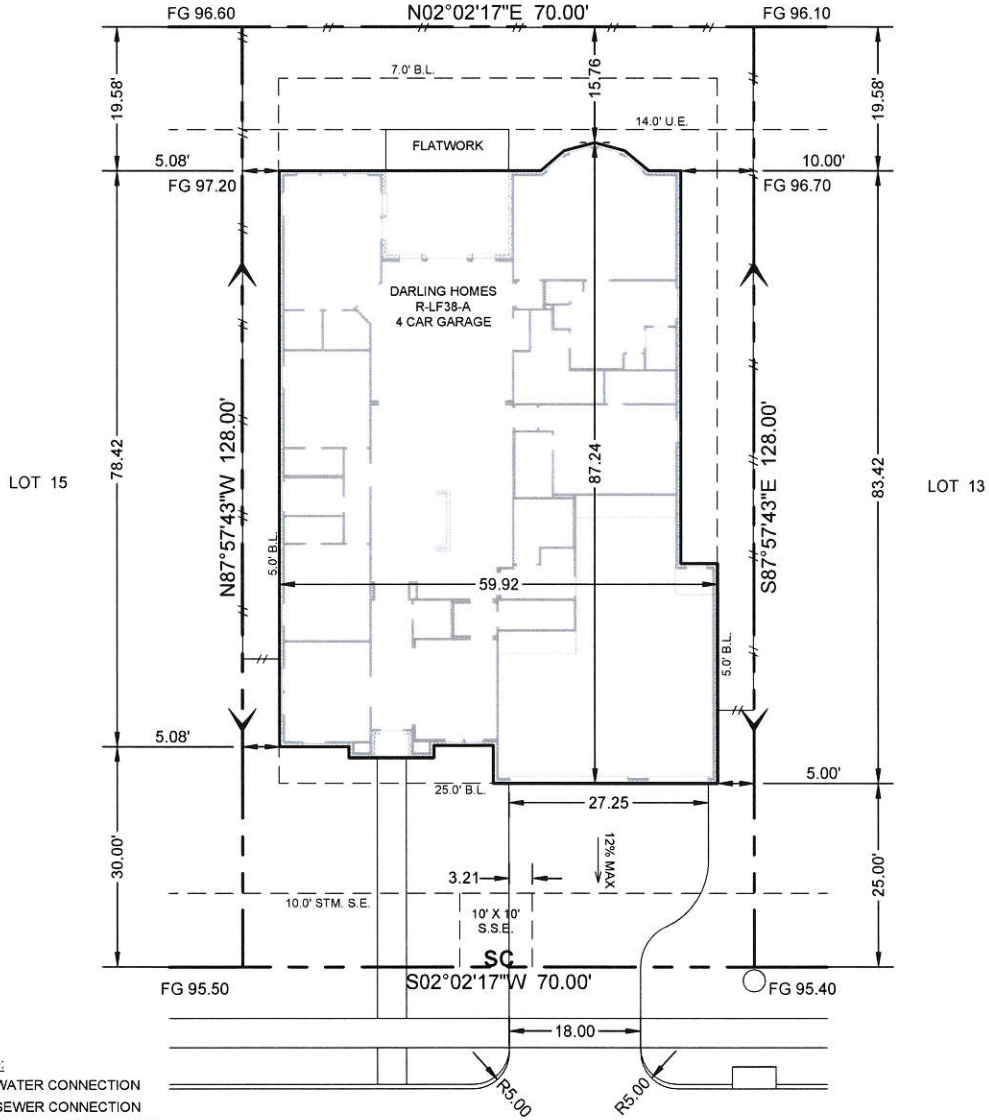
By: _____
Deputy

Fort Bend County
Lot Area: 8960 Sq.Ft.

APPROVED

RESERVE C

SCALE: 1 = 20'



LEGEND:

- WC - WATER CONNECTION
- SC - SEWER CONNECTION
- ⊠ - ELECTRIC CONNECTION
- G - GAS CONNECTION
- ⊠ - AIR CONDITIONING UNIT
- ⊕ - FIRE HYDRANT
- - STORM INLET
- * - STREET LIGHT
- ▶ - ZERO LOT LINE
- DG - DROP GARAGE W/ DISTANCE
- TD - BRICK LEDGE TURNDOWN W/ DISTANCE

NOTE:

- SEE LOT GRADING PLAN FOR MINIMUM SLAB ELEVATION REQUIREMENTS.
- FIELD LOCATE FENCE. FENCE LINE SHOWN INDICATES LIMIT OF ENCLOSED YARD. DO NOT DOUBLE FENCE. DO NOT OBSTRUCT SURFACE DRAINAGE WITHIN SD & UE'S.
- CONSTRUCTION MANAGERS TO FIELD VERIFY PAD ELEVATIONS PRIOR TO CONSTRUCTION.

BUYER SIGNATURE OF APPROVAL

X _____
X _____

AREAS

Lot Area:	8960 s.f.
Slab:	4637 s.f.
Total Impervious:	5466 s.f.
Building Coverage:	51.75 %
Impervious Coverage:	61.00 %
Front Sod Area:	187 s.y.
Rear Sod Area:	246 s.y.
Total Sod:	433 s.y.
Total Flatwork:	1301 s.f.
Fence:	259.0 l.f.
Driveway:	819 s.f.
Leadwalk:	162 s.f.
Approach:	112 s.f.
City Walk:	208 s.f.

JOB NO.: **04001401**

REV.	DATE	DESCRIPTION
1	5/3/2016	FINAL., R-LF38-A
2		
3		

Note:
This plot plan is for permitting purposes only. The location of the house is subject to change per lot conditions. Refer to the form board survey for actual slab location.

marketed as
Long Meadow Farms

subdivision
Long Meadows Farm Section 40

lot **14** blk **1** **CASTLE**

address **6210 Meadow Bluff Court** city **Richmond, TX**

date **5/3/2016** plan **R-LF38-A**