

PLAT RECORDING SHEET

PLAT NAME: Lakes of Bella Terra, Sec. 36

PLAT NO: _____

ACREAGE: 5.953

LEAGUE: Joel E. McCrary Survey, L.A. Patillo Survey

ABSTRACT NUMBER: 403, 307

NUMBER OF BLOCKS: 4

NUMBER OF LOTS: 24

NUMBER OF RESERVES: 5

OWNERS: L.O.B. Limited Partnership

(DEPUTY CLERK)

STATE OF TEXAS

COUNTY OF FORT BEND
I, WILLIAM S. BAKER, a Professional Engineer Registered in the State of Texas, do hereby certify that the plan of the subdivision of 5.853 acres of land situated in the L.A.S. McGray Survey, Abstract No. 403 and The L.A. Patillo Survey, Abstract No. 307, Fort Bend County, Texas, as shown hereon, is in conformity with the laws of the State of Texas and the ordinances of the City of Houston, as shown hereon, and authorized the recording of this plan.

WILLIAM S. BAKER, P.E.
TECHNICAL ENGINEER NO. 11019
I, WILLIAM S. BAKER, a Professional Engineer Registered in the State of Texas, do hereby certify that the plan of the subdivision of 5.853 acres of land situated in the L.A.S. McGray Survey, Abstract No. 403 and The L.A. Patillo Survey, Abstract No. 307, Fort Bend County, Texas, as shown hereon, is in conformity with the laws of the State of Texas and the ordinances of the City of Houston, as shown hereon, and authorized the recording of this plan.

WILLIAM S. BAKER, P.E.
TECHNICAL ENGINEER NO. 11019
I, WILLIAM S. BAKER, a Professional Engineer Registered in the State of Texas, do hereby certify that the plan of the subdivision of 5.853 acres of land situated in the L.A.S. McGray Survey, Abstract No. 403 and The L.A. Patillo Survey, Abstract No. 307, Fort Bend County, Texas, as shown hereon, is in conformity with the laws of the State of Texas and the ordinances of the City of Houston, as shown hereon, and authorized the recording of this plan.

WILLIAM S. BAKER, P.E.
TECHNICAL ENGINEER NO. 11019
I, WILLIAM S. BAKER, a Professional Engineer Registered in the State of Texas, do hereby certify that the plan of the subdivision of 5.853 acres of land situated in the L.A.S. McGray Survey, Abstract No. 403 and The L.A. Patillo Survey, Abstract No. 307, Fort Bend County, Texas, as shown hereon, is in conformity with the laws of the State of Texas and the ordinances of the City of Houston, as shown hereon, and authorized the recording of this plan.

WILLIAM S. BAKER, P.E.
TECHNICAL ENGINEER NO. 11019
I, WILLIAM S. BAKER, a Professional Engineer Registered in the State of Texas, do hereby certify that the plan of the subdivision of 5.853 acres of land situated in the L.A.S. McGray Survey, Abstract No. 403 and The L.A. Patillo Survey, Abstract No. 307, Fort Bend County, Texas, as shown hereon, is in conformity with the laws of the State of Texas and the ordinances of the City of Houston, as shown hereon, and authorized the recording of this plan.

WILLIAM S. BAKER, P.E.
TECHNICAL ENGINEER NO. 11019
I, WILLIAM S. BAKER, a Professional Engineer Registered in the State of Texas, do hereby certify that the plan of the subdivision of 5.853 acres of land situated in the L.A.S. McGray Survey, Abstract No. 403 and The L.A. Patillo Survey, Abstract No. 307, Fort Bend County, Texas, as shown hereon, is in conformity with the laws of the State of Texas and the ordinances of the City of Houston, as shown hereon, and authorized the recording of this plan.

WILLIAM S. BAKER, P.E.
TECHNICAL ENGINEER NO. 11019
I, WILLIAM S. BAKER, a Professional Engineer Registered in the State of Texas, do hereby certify that the plan of the subdivision of 5.853 acres of land situated in the L.A.S. McGray Survey, Abstract No. 403 and The L.A. Patillo Survey, Abstract No. 307, Fort Bend County, Texas, as shown hereon, is in conformity with the laws of the State of Texas and the ordinances of the City of Houston, as shown hereon, and authorized the recording of this plan.

WILLIAM S. BAKER, P.E.
TECHNICAL ENGINEER NO. 11019
I, WILLIAM S. BAKER, a Professional Engineer Registered in the State of Texas, do hereby certify that the plan of the subdivision of 5.853 acres of land situated in the L.A.S. McGray Survey, Abstract No. 403 and The L.A. Patillo Survey, Abstract No. 307, Fort Bend County, Texas, as shown hereon, is in conformity with the laws of the State of Texas and the ordinances of the City of Houston, as shown hereon, and authorized the recording of this plan.

WILLIAM S. BAKER, P.E.
TECHNICAL ENGINEER NO. 11019
I, WILLIAM S. BAKER, a Professional Engineer Registered in the State of Texas, do hereby certify that the plan of the subdivision of 5.853 acres of land situated in the L.A.S. McGray Survey, Abstract No. 403 and The L.A. Patillo Survey, Abstract No. 307, Fort Bend County, Texas, as shown hereon, is in conformity with the laws of the State of Texas and the ordinances of the City of Houston, as shown hereon, and authorized the recording of this plan.

WILLIAM S. BAKER, P.E.
TECHNICAL ENGINEER NO. 11019
I, WILLIAM S. BAKER, a Professional Engineer Registered in the State of Texas, do hereby certify that the plan of the subdivision of 5.853 acres of land situated in the L.A.S. McGray Survey, Abstract No. 403 and The L.A. Patillo Survey, Abstract No. 307, Fort Bend County, Texas, as shown hereon, is in conformity with the laws of the State of Texas and the ordinances of the City of Houston, as shown hereon, and authorized the recording of this plan.

WILLIAM S. BAKER, P.E.
TECHNICAL ENGINEER NO. 11019
I, WILLIAM S. BAKER, a Professional Engineer Registered in the State of Texas, do hereby certify that the plan of the subdivision of 5.853 acres of land situated in the L.A.S. McGray Survey, Abstract No. 403 and The L.A. Patillo Survey, Abstract No. 307, Fort Bend County, Texas, as shown hereon, is in conformity with the laws of the State of Texas and the ordinances of the City of Houston, as shown hereon, and authorized the recording of this plan.

WILLIAM S. BAKER, P.E.
TECHNICAL ENGINEER NO. 11019
I, WILLIAM S. BAKER, a Professional Engineer Registered in the State of Texas, do hereby certify that the plan of the subdivision of 5.853 acres of land situated in the L.A.S. McGray Survey, Abstract No. 403 and The L.A. Patillo Survey, Abstract No. 307, Fort Bend County, Texas, as shown hereon, is in conformity with the laws of the State of Texas and the ordinances of the City of Houston, as shown hereon, and authorized the recording of this plan.

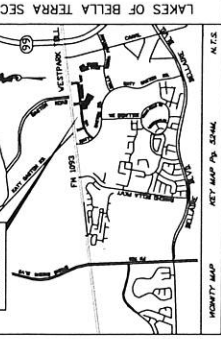
WILLIAM S. BAKER, P.E.
TECHNICAL ENGINEER NO. 11019
I, WILLIAM S. BAKER, a Professional Engineer Registered in the State of Texas, do hereby certify that the plan of the subdivision of 5.853 acres of land situated in the L.A.S. McGray Survey, Abstract No. 403 and The L.A. Patillo Survey, Abstract No. 307, Fort Bend County, Texas, as shown hereon, is in conformity with the laws of the State of Texas and the ordinances of the City of Houston, as shown hereon, and authorized the recording of this plan.

WILLIAM S. BAKER, P.E.
TECHNICAL ENGINEER NO. 11019
I, WILLIAM S. BAKER, a Professional Engineer Registered in the State of Texas, do hereby certify that the plan of the subdivision of 5.853 acres of land situated in the L.A.S. McGray Survey, Abstract No. 403 and The L.A. Patillo Survey, Abstract No. 307, Fort Bend County, Texas, as shown hereon, is in conformity with the laws of the State of Texas and the ordinances of the City of Houston, as shown hereon, and authorized the recording of this plan.

WILLIAM S. BAKER, P.E.
TECHNICAL ENGINEER NO. 11019
I, WILLIAM S. BAKER, a Professional Engineer Registered in the State of Texas, do hereby certify that the plan of the subdivision of 5.853 acres of land situated in the L.A.S. McGray Survey, Abstract No. 403 and The L.A. Patillo Survey, Abstract No. 307, Fort Bend County, Texas, as shown hereon, is in conformity with the laws of the State of Texas and the ordinances of the City of Houston, as shown hereon, and authorized the recording of this plan.

NOTES

- 1. THE PROPOSED LOTS SHALL BE BOUND BY THE LINES OF THE L.A.S. McGRAY SURVEY, ABSTRACT NO. 403, AND THE L.A. PATILLO SURVEY, ABSTRACT NO. 307, FORT BEND COUNTY, TEXAS. THE BOUNDARIES OF THE LOTS SHALL BE BOUND BY THE LINES OF THE L.A.S. McGRAY SURVEY, ABSTRACT NO. 403, AND THE L.A. PATILLO SURVEY, ABSTRACT NO. 307, FORT BEND COUNTY, TEXAS. THE BOUNDARIES OF THE LOTS SHALL BE BOUND BY THE LINES OF THE L.A.S. McGRAY SURVEY, ABSTRACT NO. 403, AND THE L.A. PATILLO SURVEY, ABSTRACT NO. 307, FORT BEND COUNTY, TEXAS.



APPROVED BY THE COMMISSIONERS COURT OF FORT BEND COUNTY, TEXAS THIS ___ DAY OF ___, 2014.

ROBERT E. STUBBS, P.E.
COMMISSIONER, DISTRICT 1
ROBERT E. STUBBS, P.E.
COMMISSIONER, DISTRICT 2
ROBERT E. STUBBS, P.E.
COMMISSIONER, DISTRICT 3
ROBERT E. STUBBS, P.E.
COMMISSIONER, DISTRICT 4

THE STATE OF TEXAS
COUNTY OF FORT BEND
I, LARA BOWMAN, COUNTY CLERK OF FORT BEND COUNTY, DO HEREBY CERTIFY THAT THE FOREGOING INSTRUMENT WITH ITS CERTIFICATE OF AUTHENTICATION WAS FILED FOR RECORDATION IN MY OFFICE ON ___ DAY OF ___, 2014, AT ___ O'CLOCK, ___ A.M. IN PLAT NO. ___ OF THE PLAT RECORDS OF SAID COUNTY.

WITNES MY HAND AND SEAL OF OFFICE AT HOUSTON, TEXAS, THE DAY AND DATE LAST ABOVE WRITTEN.

LAKES OF BELLA TERRA SEC 36

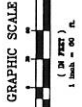
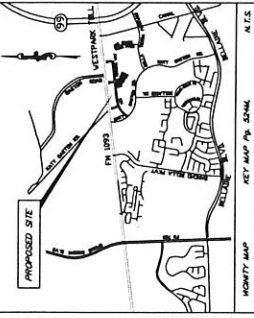
A SUBDIVISION OF 5.853 ACRES OF LAND SITUATED IN THE JOEL E. MCGRAY SURVEY, ABSTRACT NO. 403 AND THE L. A. PATILLO SURVEY, ABSTRACT NO. 307 FORT BEND COUNTY, TEXAS

24 LOTS 4 BLOCKS 5 RESERVES
SCALE: 1"=60'
DATE: JANUARY, 2016

OWNER:
1700 South Loop West, Suite 200
Houston, Texas 77058
(713) 832-0200



BENCHMARK ENGINEERING CORPORATION
Consulting Engineers - Planners - Surveyors
3401 Postalamanteo Blvd. 000
Houston, Texas 77058
(713) 832-0200 Fax: (713) 832-3000



- LEGEND**
- BOUNDARY
 - BOUNDARY LINE
 - SANITARY SEWER CATCHMENT
 - WATER LINE CATCHMENT
 - ADRIAL CATCHMENT
 - WATER LINE CATCHMENT
 - F.A.C.P. No. FORT BEND COUNTY PLAT NUMBER
 - F.A.C.P. No. FORT BEND COUNTY PLAT NUMBER
 - SQUARE FOOT
 - RESERVE IDENTIFICATION LETTER
 - NAME
 - AREA
 - VOLUME
 - BLOCK CORNER

LAKES OF BELLA TERRA SEC 36

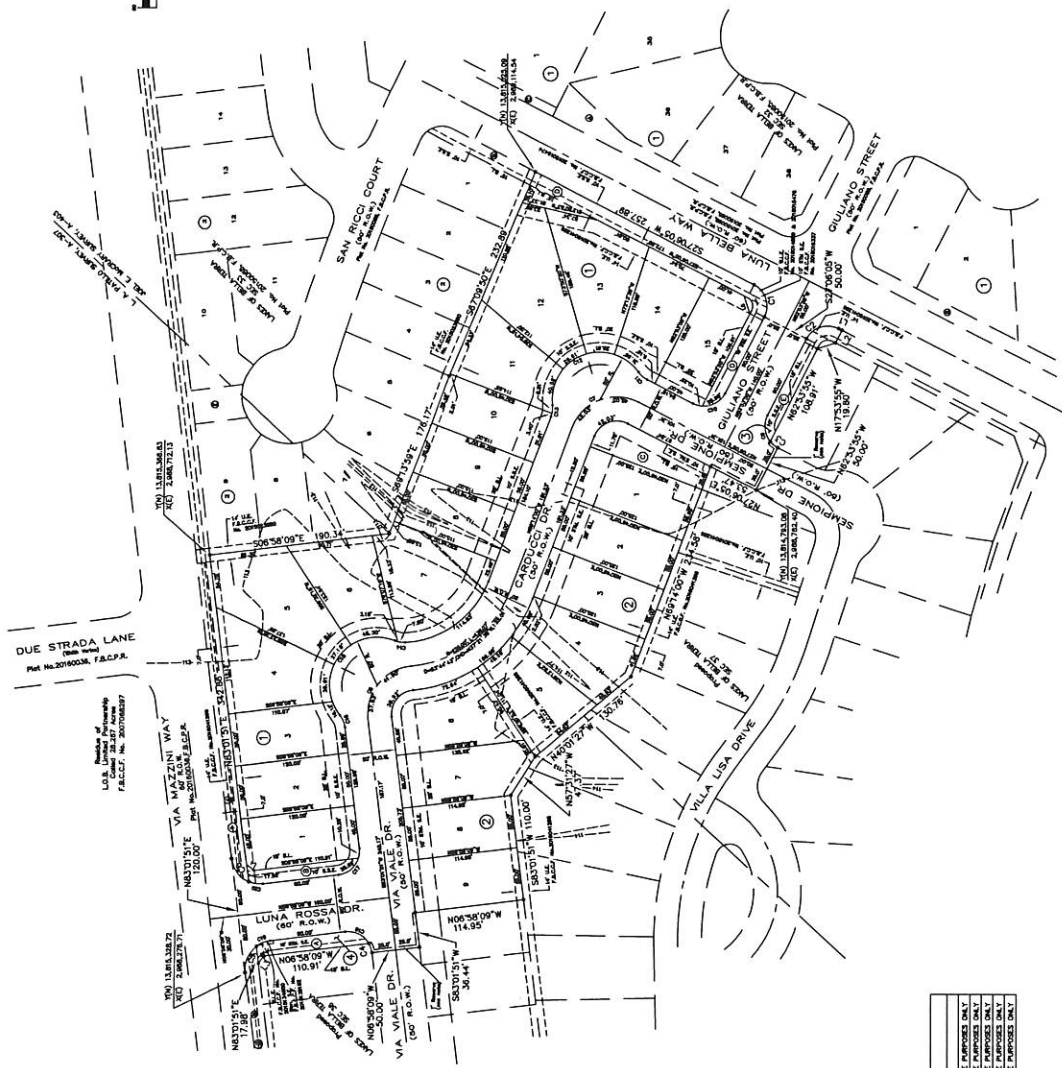
A SUBDIVISION OF 5.953 ACRES OF LAND SITUATED IN THE JOEL E. MCGARRY SURVEY, ABSTRACT NO. 403 AND THE L. A. PATILLO SURVEY, ABSTRACT NO. 307 FORT BEND COUNTY, TEXAS

24 LOTS 4 BLOCKS 5 RESERVES
SCALE: 1"=80' DATE: JANUARY, 2018

OWNER:
L.S. LARSEN
7000 San Felipe St., Suite 400
Houston, Texas 77056
(713) 842-0080

PREPARED BY:
BENCHMARK ENGINEERING CORPORATION
Consulting Engineers - Planners - Surveyors
8401 Pennington Blvd. Suite 500
Houston, Texas 77056
(713) 858-8900 Fax (713) 858-8504

Texas Board of Professional Engineers
Registration Number 7-4776
Texas Public Registration Number 1000000 E.L.C. JOB #04-18-158
Sheet 1 of 2



CURVE	RADIUS	LENGTH	CHORD	BEARING	DELTA
C1	25.00'	28.77'	28.39'	307.0532°	89.7070°
C2	25.00'	18.02'	17.82'	328.5252°	31.1711°
C3	25.00'	18.02'	17.82'	328.5252°	31.1711°
C4	25.00'	28.77'	28.39'	307.0532°	89.7070°
C5	25.00'	28.77'	28.39'	307.0532°	89.7070°
C6	25.00'	28.77'	28.39'	307.0532°	89.7070°
C7	25.00'	28.77'	28.39'	307.0532°	89.7070°
C8	25.00'	28.77'	28.39'	307.0532°	89.7070°
C9	25.00'	28.77'	28.39'	307.0532°	89.7070°
C10	25.00'	28.77'	28.39'	307.0532°	89.7070°
C11	25.00'	28.77'	28.39'	307.0532°	89.7070°
C12	25.00'	28.77'	28.39'	307.0532°	89.7070°
C13	25.00'	28.77'	28.39'	307.0532°	89.7070°
C14	25.00'	28.77'	28.39'	307.0532°	89.7070°
C15	25.00'	28.77'	28.39'	307.0532°	89.7070°
C16	25.00'	28.77'	28.39'	307.0532°	89.7070°
C17	25.00'	28.77'	28.39'	307.0532°	89.7070°
C18	25.00'	28.77'	28.39'	307.0532°	89.7070°
C19	25.00'	28.77'	28.39'	307.0532°	89.7070°
C20	25.00'	28.77'	28.39'	307.0532°	89.7070°
C21	25.00'	28.77'	28.39'	307.0532°	89.7070°
C22	25.00'	28.77'	28.39'	307.0532°	89.7070°
C23	25.00'	28.77'	28.39'	307.0532°	89.7070°
C24	25.00'	28.77'	28.39'	307.0532°	89.7070°
C25	25.00'	28.77'	28.39'	307.0532°	89.7070°

BELLA	N/A
MAP	F.A.C.P. No. 113
LD	N/A
SCHOOL	N/A
FIRE	F.A.C. FIRE MARSHAL
CITY OR CITY ETC	N/A
UTILITIES CO.	HOUSTON ETC
UTILITY	SEC AND CATCHMENT ENERGY

LINE	BEARING	LENGTH
L1	114.95°	114.95'
L2	114.95°	114.95'
L3	114.95°	114.95'
L4	114.95°	114.95'
L5	114.95°	114.95'
L6	114.95°	114.95'
L7	114.95°	114.95'
L8	114.95°	114.95'
L9	114.95°	114.95'
L10	114.95°	114.95'
L11	114.95°	114.95'
L12	114.95°	114.95'
L13	114.95°	114.95'
L14	114.95°	114.95'
L15	114.95°	114.95'
L16	114.95°	114.95'
L17	114.95°	114.95'
L18	114.95°	114.95'
L19	114.95°	114.95'
L20	114.95°	114.95'
L21	114.95°	114.95'
L22	114.95°	114.95'
L23	114.95°	114.95'
L24	114.95°	114.95'
L25	114.95°	114.95'
L26	114.95°	114.95'
L27	114.95°	114.95'
L28	114.95°	114.95'
L29	114.95°	114.95'
L30	114.95°	114.95'
L31	114.95°	114.95'
L32	114.95°	114.95'
L33	114.95°	114.95'
L34	114.95°	114.95'
L35	114.95°	114.95'
L36	114.95°	114.95'
L37	114.95°	114.95'
L38	114.95°	114.95'
L39	114.95°	114.95'
L40	114.95°	114.95'
L41	114.95°	114.95'
L42	114.95°	114.95'
L43	114.95°	114.95'
L44	114.95°	114.95'
L45	114.95°	114.95'
L46	114.95°	114.95'
L47	114.95°	114.95'
L48	114.95°	114.95'
L49	114.95°	114.95'
L50	114.95°	114.95'
L51	114.95°	114.95'
L52	114.95°	114.95'
L53	114.95°	114.95'
L54	114.95°	114.95'
L55	114.95°	114.95'
L56	114.95°	114.95'
L57	114.95°	114.95'
L58	114.95°	114.95'
L59	114.95°	114.95'
L60	114.95°	114.95'
L61	114.95°	114.95'
L62	114.95°	114.95'
L63	114.95°	114.95'
L64	114.95°	114.95'
L65	114.95°	114.95'
L66	114.95°	114.95'
L67	114.95°	114.95'
L68	114.95°	114.95'
L69	114.95°	114.95'
L70	114.95°	114.95'
L71	114.95°	114.95'
L72	114.95°	114.95'
L73	114.95°	114.95'
L74	114.95°	114.95'
L75	114.95°	114.95'
L76	114.95°	114.95'
L77	114.95°	114.95'
L78	114.95°	114.95'
L79	114.95°	114.95'
L80	114.95°	114.95'
L81	114.95°	114.95'
L82	114.95°	114.95'
L83	114.95°	114.95'
L84	114.95°	114.95'
L85	114.95°	114.95'
L86	114.95°	114.95'
L87	114.95°	114.95'
L88	114.95°	114.95'
L89	114.95°	114.95'
L90	114.95°	114.95'
L91	114.95°	114.95'
L92	114.95°	114.95'
L93	114.95°	114.95'
L94	114.95°	114.95'
L95	114.95°	114.95'
L96	114.95°	114.95'
L97	114.95°	114.95'
L98	114.95°	114.95'
L99	114.95°	114.95'
L100	114.95°	114.95'

RESERVE	SEC	LOT	BLOCKS	RESERVES	RESERVES TO
1	36	1	1	1	RESERVES TO
2	36	2	1	1	RESERVES TO
3	36	3	1	1	RESERVES TO
4	36	4	1	1	RESERVES TO
5	36	5	1	1	RESERVES TO
6	36	6	1	1	RESERVES TO
7	36	7	1	1	RESERVES TO
8	36	8	1	1	RESERVES TO
9	36	9	1	1	RESERVES TO
10	36	10	1	1	RESERVES TO
11	36	11	1	1	RESERVES TO
12	36	12	1	1	RESERVES TO
13	36	13	1	1	RESERVES TO
14	36	14	1	1	RESERVES TO
15	36	15	1	1	RESERVES TO
16	36	16	1	1	RESERVES TO
17	36	17	1	1	RESERVES TO
18	36	18	1	1	RESERVES TO
19	36	19	1	1	RESERVES TO
20	36	20	1	1	RESERVES TO
21	36	21	1	1	RESERVES TO
22	36	22	1	1	RESERVES TO
23	36	23	1	1	RESERVES TO
24	36	24	1	1	RESERVES TO