

PLAT RECORDING SHEET

PLAT NAME: Aliana Somerled Avenue at Clouston Avenue Street Dedication

PLAT NO: _____

ACREAGE: 3.353

LEAGUE: Jane Wilkins League

ABSTRACT NUMBER: 96

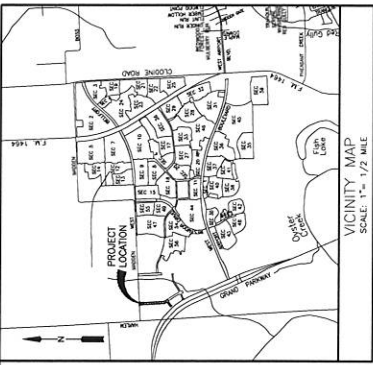
NUMBER OF BLOCKS: 0

NUMBER OF LOTS: 0

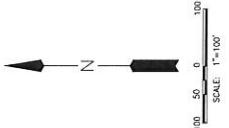
NUMBER OF RESERVES: 0

OWNERS: Aliana Development Company, a Texas Corporation

(DEPUTY CLERK)



VICINITY MAP
SCALE: 1" = 1/2 MILE
KEY MAP NO. 5287

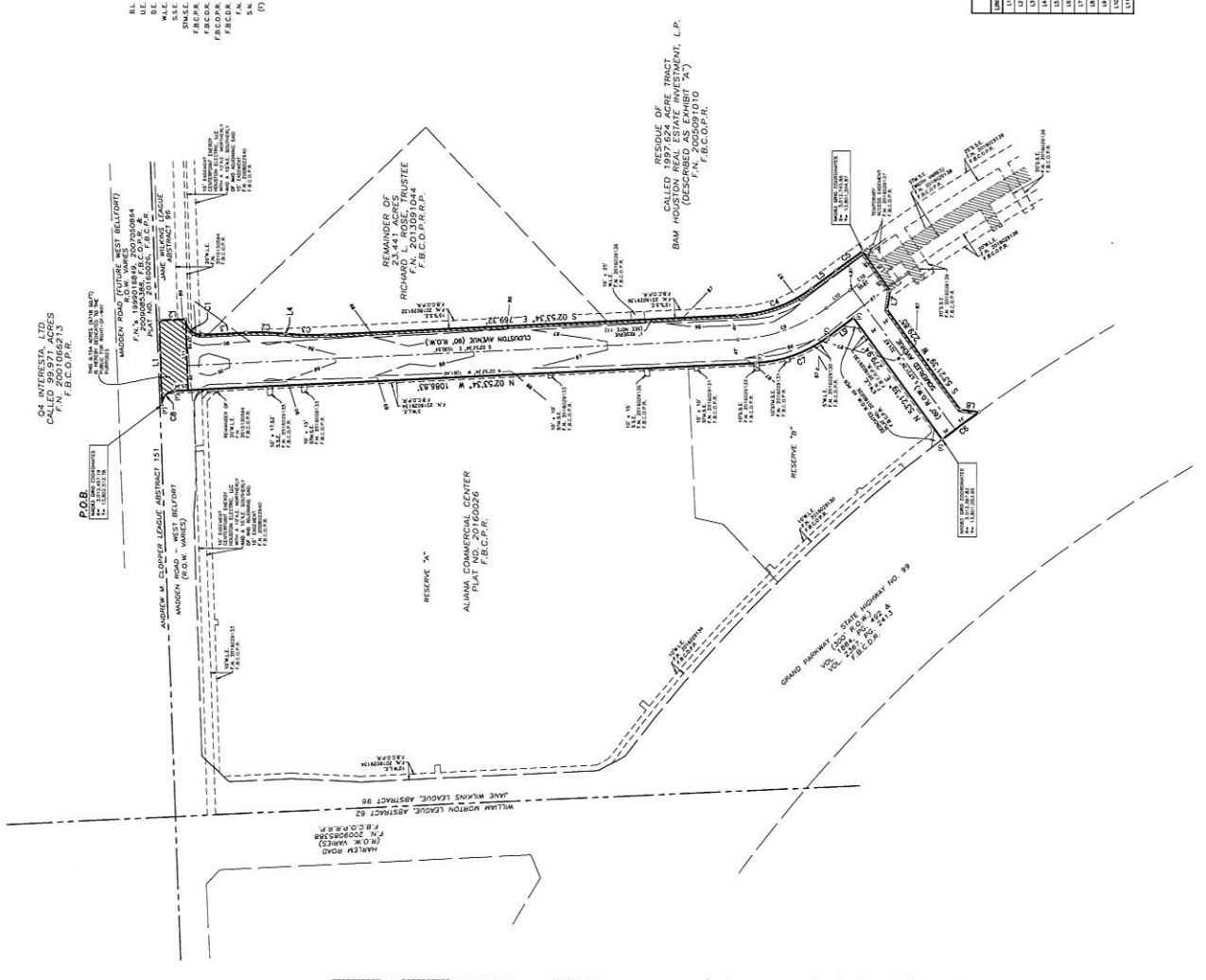


LEGEND

- BL INDICATES BUILDING LINE
- U.E. INDICATES UTILITY FACILITY
- U.L. INDICATES UTILITY LOCATION
- S.E.E. INDICATES SURVEYED EASEMENT
- S.M.S.E. INDICATES SURVEYED EASEMENT
- F.B.C.O.P.R. INDICATES FORT BEND COUNTY OFFICIAL PUBLIC RECORDS
- F.B.C.O.R. INDICATES FORT BEND COUNTY OFFICIAL PUBLIC RECORDS
- F.E.C.R. INDICATES FORT BEND COUNTY DEED RECORDS
- S.N. INDICATES SEE NOTE
- (*) INDICATES POINT 5/8 INCH HIGH WITH ROD WITH CAP MARKED "SURV" & "PATENTED"

NOTES:

1. UNLESS OTHERWISE NOTED, ALL DIMENSIONS ARE IN FEET AND DECIMALS THEREOF. DIMENSIONS ARE TO BE MEASURED FROM THE POINTS APPROVED, WHICH MAY BE ADJUSTED FROM THE POINTS APPROVED, WHICH MAY BE ADJUSTED FROM THE POINTS APPROVED.
2. STATE PLANS AND RECORDS (NAD83) AND ADJUSTMENTS MAY BE BROUGHT TO SURFACE BY APPLYING THE FOLLOWING CORRECTIONS:
3. CORRECTION TO ELEVATION ON THE WEST SIDE OF THE ROADWAY IS 0.0000 FEET.
4. THE PLAT WAS PREPARED FROM INFORMATION FURNISHED BY STEVEN T. JAMES, JR., 2014, THE SURVEYOR OF FORT BEND COUNTY, TEXAS, WHO HAS ADVISED THAT THE INFORMATION WAS OBTAINED FROM THE CITY OF FORT BEND COUNTY, TEXAS, AND THAT THE INFORMATION WAS OBTAINED FROM THE CITY OF FORT BEND COUNTY, TEXAS, AND THAT THE INFORMATION WAS OBTAINED FROM THE CITY OF FORT BEND COUNTY, TEXAS.
5. THE PLAT WAS PREPARED FROM INFORMATION FURNISHED BY STEVEN T. JAMES, JR., 2014, THE SURVEYOR OF FORT BEND COUNTY, TEXAS, WHO HAS ADVISED THAT THE INFORMATION WAS OBTAINED FROM THE CITY OF FORT BEND COUNTY, TEXAS, AND THAT THE INFORMATION WAS OBTAINED FROM THE CITY OF FORT BEND COUNTY, TEXAS.
6. THE PLAT LIES WITHIN THE CITY OF FORT BEND COUNTY, TEXAS, AND IS SUBJECT TO THE CITY OF FORT BEND COUNTY, TEXAS, AND IS SUBJECT TO THE CITY OF FORT BEND COUNTY, TEXAS.
7. BY GRANTING THIS PLAT, THE SUBJECT TRACT LIES WITHIN ZONE "X" (UNZONED) AND IS SUBJECT TO THE CITY OF FORT BEND COUNTY, TEXAS, AND IS SUBJECT TO THE CITY OF FORT BEND COUNTY, TEXAS.
8. THE DRAINAGE SYSTEM FOR THIS SUBDIVISION SHALL BE DESIGNED TO MEET THE REQUIREMENTS OF THE CITY OF FORT BEND COUNTY, TEXAS, AND IS SUBJECT TO THE CITY OF FORT BEND COUNTY, TEXAS.
9. ALL DRAINAGE FACILITIES TO BE LEFT CLEAR OF FENCES, BARRIERS, VEGETATION AND OBSTRUCTIONS TO THE OPERATION AND MAINTENANCE OF THE DRAINAGE FACILITY.
10. UNLESS OTHERWISE NOTED, THE DRAINAGE FACILITY SHALL BE DESIGNED TO MEET THE REQUIREMENTS OF THE CITY OF FORT BEND COUNTY, TEXAS, AND IS SUBJECT TO THE CITY OF FORT BEND COUNTY, TEXAS.
11. ONE-FOOT TRACT DEDICATED FOR BETTER PURPOSES TO THE PUBLIC IN USE AS A TRAIL OR PATHWAY SHALL BE CONSIDERED AS A TRAIL OR PATHWAY AND SHALL BE SUBJECT TO THE CITY OF FORT BEND COUNTY, TEXAS, AND IS SUBJECT TO THE CITY OF FORT BEND COUNTY, TEXAS.
12. UNLESS OTHERWISE NOTED, THE DRAINAGE FACILITY SHALL BE DESIGNED TO MEET THE REQUIREMENTS OF THE CITY OF FORT BEND COUNTY, TEXAS, AND IS SUBJECT TO THE CITY OF FORT BEND COUNTY, TEXAS.
13. ALL DRAINAGE FACILITIES TO BE LEFT CLEAR OF FENCES, BARRIERS, VEGETATION AND OBSTRUCTIONS TO THE OPERATION AND MAINTENANCE OF THE DRAINAGE FACILITY.
14. THIS PLAT LIES WITHIN LIGHTING ZONE 3.
15. THERE ARE NO PAVEMENT OR PAVEMENT FACILITIES WITHIN THE LIMITS OF THE SUBDIVISION.
16. THE MAINTENANCE RESPONSIBILITY OF THE RETENTION FACILITY IS TO BE DETERMINED BY THE CITY OF FORT BEND COUNTY, TEXAS, AND IS SUBJECT TO THE CITY OF FORT BEND COUNTY, TEXAS.
17. CROSS ACCESS EASEMENT AS SET FORTH IN INSTRUMENT RECORDED UNDER INSTRUMENT NO. 2014030107 OF THE OFFICIAL RECORDS OF FORT BEND COUNTY, TEXAS.



CURVE TABLE

LINE NUMBER	CHORD BEARING	CHORD LENGTH	ARC BEARING	ARC LENGTH	PIECE POINT
11	S 89°52'57" E	100.00	171°52'57"	100.00	100.00
12	S 89°52'57" E	100.00	171°52'57"	100.00	200.00
13	S 89°52'57" E	100.00	171°52'57"	100.00	300.00
14	S 89°52'57" E	100.00	171°52'57"	100.00	400.00
15	S 89°52'57" E	100.00	171°52'57"	100.00	500.00
16	S 89°52'57" E	100.00	171°52'57"	100.00	600.00
17	S 89°52'57" E	100.00	171°52'57"	100.00	700.00
18	S 89°52'57" E	100.00	171°52'57"	100.00	800.00
19	S 89°52'57" E	100.00	171°52'57"	100.00	900.00
20	S 89°52'57" E	100.00	171°52'57"	100.00	1000.00
21	S 89°52'57" E	100.00	171°52'57"	100.00	1100.00
22	S 89°52'57" E	100.00	171°52'57"	100.00	1200.00
23	S 89°52'57" E	100.00	171°52'57"	100.00	1300.00
24	S 89°52'57" E	100.00	171°52'57"	100.00	1400.00
25	S 89°52'57" E	100.00	171°52'57"	100.00	1500.00
26	S 89°52'57" E	100.00	171°52'57"	100.00	1600.00
27	S 89°52'57" E	100.00	171°52'57"	100.00	1700.00
28	S 89°52'57" E	100.00	171°52'57"	100.00	1800.00
29	S 89°52'57" E	100.00	171°52'57"	100.00	1900.00
30	S 89°52'57" E	100.00	171°52'57"	100.00	2000.00
31	S 89°52'57" E	100.00	171°52'57"	100.00	2100.00
32	S 89°52'57" E	100.00	171°52'57"	100.00	2200.00
33	S 89°52'57" E	100.00	171°52'57"	100.00	2300.00
34	S 89°52'57" E	100.00	171°52'57"	100.00	2400.00
35	S 89°52'57" E	100.00	171°52'57"	100.00	2500.00
36	S 89°52'57" E	100.00	171°52'57"	100.00	2600.00
37	S 89°52'57" E	100.00	171°52'57"	100.00	2700.00
38	S 89°52'57" E	100.00	171°52'57"	100.00	2800.00
39	S 89°52'57" E	100.00	171°52'57"	100.00	2900.00
40	S 89°52'57" E	100.00	171°52'57"	100.00	3000.00
41	S 89°52'57" E	100.00	171°52'57"	100.00	3100.00
42	S 89°52'57" E	100.00	171°52'57"	100.00	3200.00
43	S 89°52'57" E	100.00	171°52'57"	100.00	3300.00
44	S 89°52'57" E	100.00	171°52'57"	100.00	3400.00
45	S 89°52'57" E	100.00	171°52'57"	100.00	3500.00
46	S 89°52'57" E	100.00	171°52'57"	100.00	3600.00
47	S 89°52'57" E	100.00	171°52'57"	100.00	3700.00
48	S 89°52'57" E	100.00	171°52'57"	100.00	3800.00
49	S 89°52'57" E	100.00	171°52'57"	100.00	3900.00
50	S 89°52'57" E	100.00	171°52'57"	100.00	4000.00
51	S 89°52'57" E	100.00	171°52'57"	100.00	4100.00
52	S 89°52'57" E	100.00	171°52'57"	100.00	4200.00
53	S 89°52'57" E	100.00	171°52'57"	100.00	4300.00
54	S 89°52'57" E	100.00	171°52'57"	100.00	4400.00
55	S 89°52'57" E	100.00	171°52'57"	100.00	4500.00
56	S 89°52'57" E	100.00	171°52'57"	100.00	4600.00
57	S 89°52'57" E	100.00	171°52'57"	100.00	4700.00
58	S 89°52'57" E	100.00	171°52'57"	100.00	4800.00
59	S 89°52'57" E	100.00	171°52'57"	100.00	4900.00
60	S 89°52'57" E	100.00	171°52'57"	100.00	5000.00
61	S 89°52'57" E	100.00	171°52'57"	100.00	5100.00
62	S 89°52'57" E	100.00	171°52'57"	100.00	5200.00
63	S 89°52'57" E	100.00	171°52'57"	100.00	5300.00
64	S 89°52'57" E	100.00	171°52'57"	100.00	5400.00
65	S 89°52'57" E	100.00	171°52'57"	100.00	5500.00
66	S 89°52'57" E	100.00	171°52'57"	100.00	5600.00
67	S 89°52'57" E	100.00	171°52'57"	100.00	5700.00
68	S 89°52'57" E	100.00	171°52'57"	100.00	5800.00
69	S 89°52'57" E	100.00	171°52'57"	100.00	5900.00
70	S 89°52'57" E	100.00	171°52'57"	100.00	6000.00
71	S 89°52'57" E	100.00	171°52'57"	100.00	6100.00
72	S 89°52'57" E	100.00	171°52'57"	100.00	6200.00
73	S 89°52'57" E	100.00	171°52'57"	100.00	6300.00
74	S 89°52'57" E	100.00	171°52'57"	100.00	6400.00
75	S 89°52'57" E	100.00	171°52'57"	100.00	6500.00
76	S 89°52'57" E	100.00	171°52'57"	100.00	6600.00
77	S 89°52'57" E	100.00	171°52'57"	100.00	6700.00
78	S 89°52'57" E	100.00	171°52'57"	100.00	6800.00
79	S 89°52'57" E	100.00	171°52'57"	100.00	6900.00
80	S 89°52'57" E	100.00	171°52'57"	100.00	7000.00
81	S 89°52'57" E	100.00	171°52'57"	100.00	7100.00
82	S 89°52'57" E	100.00	171°52'57"	100.00	7200.00
83	S 89°52'57" E	100.00	171°52'57"	100.00	7300.00
84	S 89°52'57" E	100.00	171°52'57"	100.00	7400.00
85	S 89°52'57" E	100.00	171°52'57"	100.00	7500.00
86	S 89°52'57" E	100.00	171°52'57"	100.00	7600.00
87	S 89°52'57" E	100.00	171°52'57"	100.00	7700.00
88	S 89°52'57" E	100.00	171°52'57"	100.00	7800.00
89	S 89°52'57" E	100.00	171°52'57"	100.00	7900.00
90	S 89°52'57" E	100.00	171°52'57"	100.00	8000.00
91	S 89°52'57" E	100.00	171°52'57"	100.00	8100.00
92	S 89°52'57" E	100.00	171°52'57"	100.00	8200.00
93	S 89°52'57" E	100.00	171°52'57"	100.00	8300.00
94	S 89°52'57" E	100.00	171°52'57"	100.00	8400.00
95	S 89°52'57" E	100.00	171°52'57"	100.00	8500.00
96	S 89°52'57" E	100.00	171°52'57"	100.00	8600.00
97	S 89°52'57" E	100.00	171°52'57"	100.00	8700.00
98	S 89°52'57" E	100.00	171°52'57"	100.00	8800.00
99	S 89°52'57" E	100.00	171°52'57"	100.00	8900.00
100	S 89°52'57" E	100.00	171°52'57"	100.00	9000.00
101	S 89°52'57" E	100.00	171°52'57"	100.00	9100.00
102	S 89°52'57" E	100.00	171°52'57"	100.00	9200.00
103	S 89°52'57" E	100.00	171°52'57"	100.00	9300.00
104	S 89°52'57" E	100.00	171°52'57"	100.00	9400.00
105	S 89°52'57" E	100.00	171°52'57"	100.00	9500.00
106	S 89°52'57" E	100.00	171°52'57"	100.00	9600.00
107	S 89°52'57" E	100.00	171°52'57"	100.00	9700.00
108	S 89°52'57" E	100.00	171°52'57"	100.00	9800.00
109	S 89°52'57" E	100.00	171°52'57"	100.00	9900.00
110	S 89°52'57" E	100.00	171°52'57"	100.00	10000.00
111	S 89°52'57" E	100.00	171°52'57"	100.00	10100.00
112	S 89°52'57" E	100.00	171°52'57"	100.00	10200.00
113	S 89°52'57" E	100.00	171°52'57"	100.00	10300.00
114	S 89°52'57" E	100.00	171°52'57"	100.00	10400.00
115	S 89°52'57" E	100.00	171°52'57"	100.00	10500.00
116	S 89°52'57" E	100.00	171°52'57"	100.00	10600.00
117	S 89°52'57" E	100.00	171°52'57"	100.00	10700.00
118	S 89°52'57" E	100.00	171°52'57"	100.00	10800.00
119	S 89°52'57" E	100.00	171°52'57"	100.00	10900.00
120	S 89°52'57" E	100.00	171°52'57"	100.00	11000.00
121	S 89°52'57" E	100.00	171°52'57"	100.00	11100.00
122	S 89°52'57" E	100.00	171°52'57"	100.00	11200.00
123	S 89°52'57" E	100.00	171°52'57"	100.00	11300.00
124	S 89°52'57" E	100.00	171°52'57"	100.00	11400.00
125	S 89°52'57" E	100.00	171°52'57"	100.00	11500.00
126	S 89°52'57" E	100.00	171°52'57"	100.00	11600.00
127	S 89°52'57" E	100.00	171°52'57"	100.00	11700.00
128	S 89°52'57" E	100.00	171°52'57"	100.00	11800.00
129	S 89°52'57" E	100.00	171°52'57"	100.00	11900.00
130	S 89°52'57" E	100.00	171°52'57"	100.00	12000.00
131	S 89°52'57" E	100.00	171°52'57"	100.00	12100.00

LINE TABLE

LINE NUMBER	CHORD BEARING	CHORD LENGTH	ARC BEARING	ARC LENGTH	PIECE POINT
1	S 89°52'57" E	100.00	171°52'57"	100.00	100.00
2	S 89°52'57" E	100.00	171°52'57"	100.00	200.00
3	S 89°52'57" E	100.00	171°52'57"	100.00	300.00
4	S 89°52'57" E	100.00	171°52'57"	100.00	400.00
5	S 89°52'57" E	100.00	171°52'57"	100.00	500.00
6	S 89°52'57" E	100.00	171°52'57"	100.00	600.00
7	S 89°52'57" E	100.00	171°52'57"	100.00	700.00
8	S 89°52'57" E	100.00	171°52'57"	100.00	800.00
9	S 89°52'57" E	100.00	171°52'57"	100.00	900.00
10	S 89°52'57" E	100.00	171°52'57"	100.00	1000.00
11	S 89°52'57" E	100.00	171°52'57"	100.00	1100.00
12	S 89°52'57" E	100.00	171°52'57"	100.00	1200.00
13	S 89°52'57" E	100.00	171°52'57"	100.00	1300.00
14	S 89°52'57" E	100.00	171°52'57"	100.00	1400.00
15	S 89°52'57" E	100.00	171°52'57"	100.00	1500.00
16	S 89°52'57" E	100.00	171°52'57		