



Fort Bend County Engineering
FORT BEND COUNTY, TEXAS

Richard W. Stolleis, P.E.
County Engineer

April 27, 2016

Commissioner Grady Prestage
Fort Bend County Precinct 2
303 Texas Parkway, Suite 213
Missouri City, Texas 77489

**RE: Sienna Ranch Road – Between Discovery Lane and Missouri City city limit,
“SPEED LIMIT 35”**

Dear Commissioner Prestage:

Fort Bend County Engineering Department has revised the traffic control plan to place speed limit signs of 35 miles per hour on Sienna Ranch Road between Discovery Lane and the Missouri City city limit as shown on the traffic control plan. The public hearing date for acceptance for the plan will be scheduled on the next available Commissioner's Court Agenda.

A copy of the traffic control plan is attached for your review. If we can be of further assistance please do not hesitate to contact me at 281-633-7528 or chris.debaillon@fortbendcountytexas.gov

Sincerely,

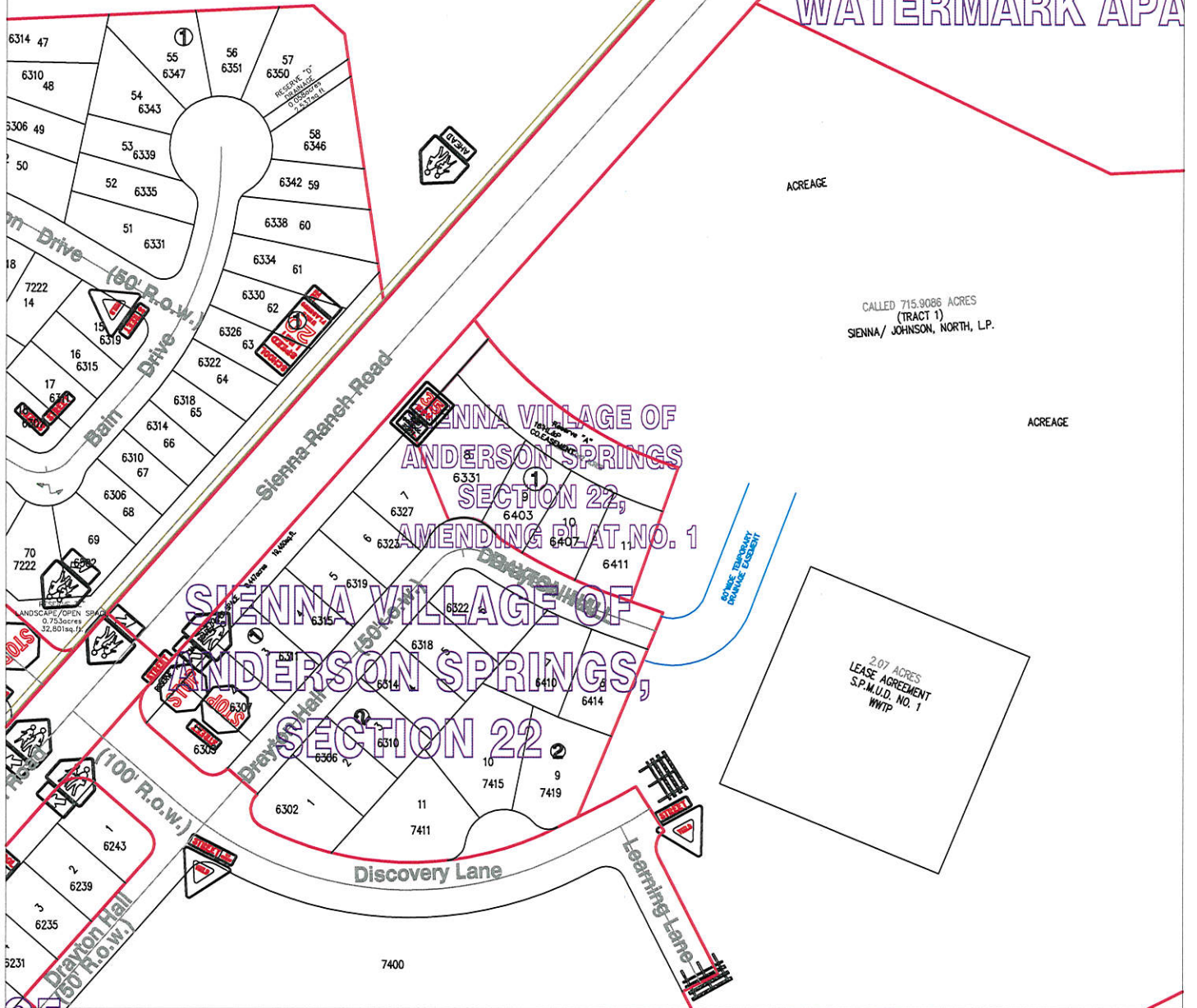
Chris Debaillon, PE, PTOE
Assistant County Engineer - Traffic

cc: Judge Robert E. Hebert, County Judge
Marc Grant - FBC Road & Bridge
Brian Fields - Signage Department
File

301 Jackson St., Suite 401, Richmond, TX 77469
Phone 281-633-7500



SIENNA RANCH ROAD NORTH - PHASE TWO STREET DEDICATION WATERMARK APA



LOT 1
10,000 ACRES 435,600

ACREAGE
CALLED 715.9086 ACRES
(TRACT 1)
SIENNA/ JOHNSON, NORTH, L.P.

2.07 ACRES
LEASE AGREEMENT
S.P.M.U.D. NO. 1
WWTP

Note:
The purpose of this traffic control plan is to revise traffic control for a portion of Sienna Ranch Road with the addition of a 35 m.p.h. speed limit sign at the Missouri City city limit line.

Drawn By: L. Brdecka
Date: 4-27-16
Approved By: Chris Deballon, PE PTOE
Date: **CD 4/27/16**
Scale
1" = 200'-0"

Sienna Ranch Road
Partial Revision
Control Map and
Traffic Sign Layout
Fort Bend County Engineering Dept.
301 Jackson Street
Richmond, Texas 77469