

PLAT RECORDING SHEET

PLAT NAME: Fieldstone, Sec. 12

PLAT NO: _____

ACREAGE: 28.81

LEAGUE: John Frederick Survey

ABSTRACT NUMBER: 172

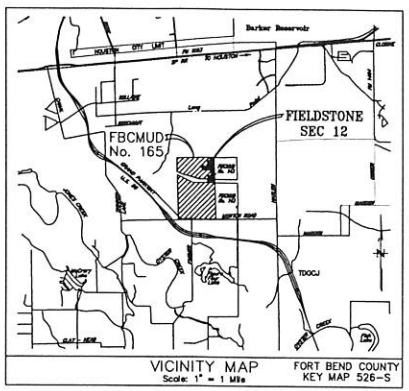
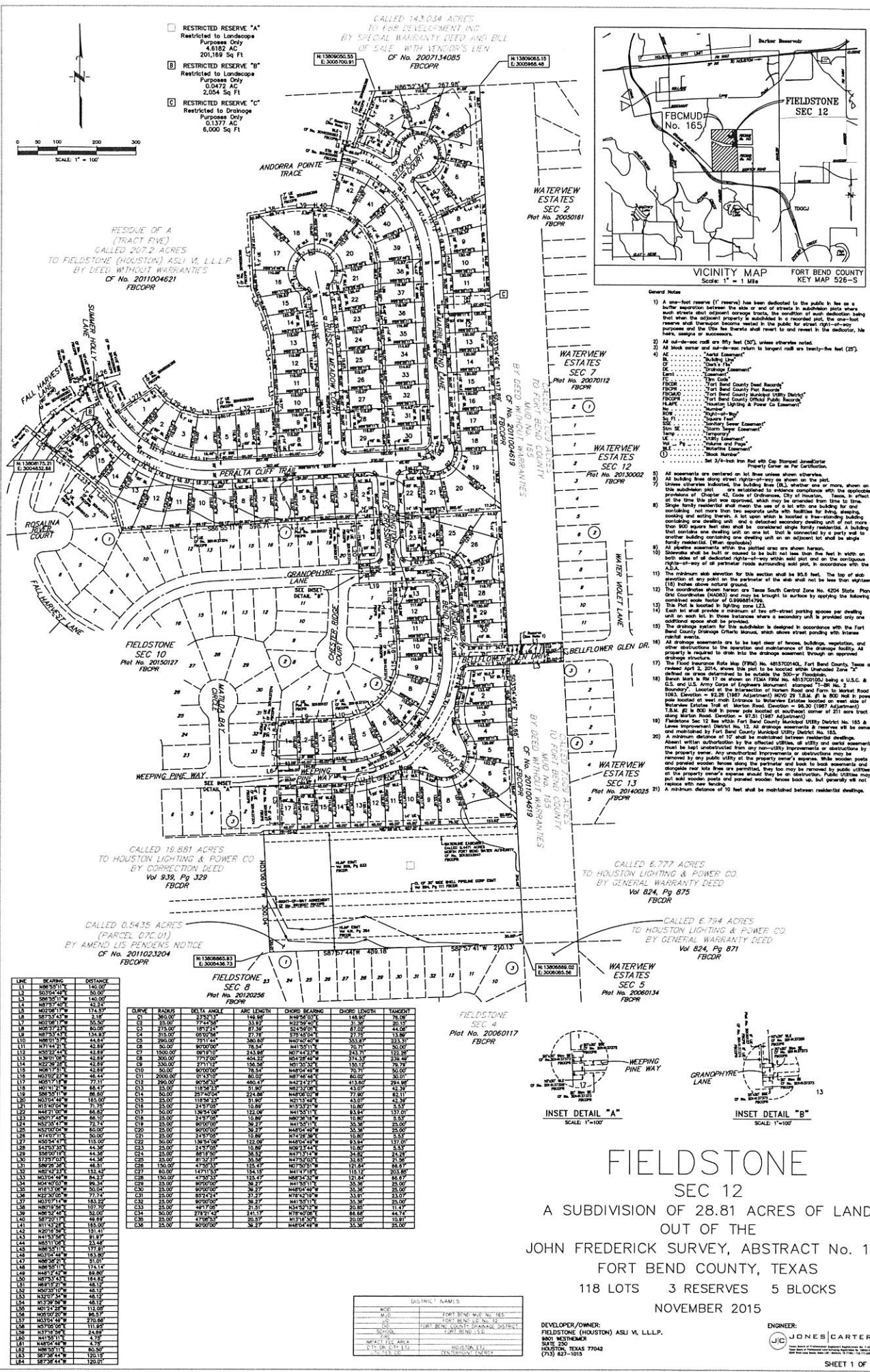
NUMBER OF BLOCKS: 5

NUMBER OF LOTS: 118

NUMBER OF RESERVES: 3

OWNERS: Fieldstone (Houston) ASLI VI, L.L.L.P.

(DEPUTY CLERK)



- General Notes
- 1) A one-foot reserve (1" reserve) has been dedicated to the public in lieu of a further reservation between the site or end of streets in subdivision plots when such streets abut adjacent parcels from the subdivision being that when the adjacent property is subdivided in a recorded plat, the one-foot reserve shall terminate between the public for street right-of-way purposes and the site fee thereby shall revert to and remain in the developer, his heirs, assigns or successors.
 - 2) All all-fee roads are 80 feet (80'), unless otherwise noted.
 - 3) All block names and block numbers return to largest road are twenty-five feet (25').
 - 4) All lots are shown with their respective lot numbers and block numbers.
 - 5) All lot areas are shown in square feet.
 - 6) All lot areas are shown in square feet.
 - 7) All lot areas are shown in square feet.
 - 8) All lot areas are shown in square feet.
 - 9) All lot areas are shown in square feet.
 - 10) All lot areas are shown in square feet.
 - 11) All lot areas are shown in square feet.
 - 12) All lot areas are shown in square feet.
 - 13) All lot areas are shown in square feet.
 - 14) All lot areas are shown in square feet.
 - 15) All lot areas are shown in square feet.
 - 16) All lot areas are shown in square feet.
 - 17) All lot areas are shown in square feet.
 - 18) All lot areas are shown in square feet.
 - 19) All lot areas are shown in square feet.
 - 20) All lot areas are shown in square feet.
 - 21) All lot areas are shown in square feet.

LINE	BEARING	DISTANCE
1	N 89° 52' 11" W	140.00'
2	S 03° 24' 42" E	26.00'
3	S 08° 35' 11" W	140.00'
4	N 01° 01' 17" E	26.00'
5	N 02° 01' 17" E	174.87'
6	S 87° 23' 43" W	211'
7	N 89° 52' 11" W	25.00'
8	N 01° 01' 17" E	25.00'
9	N 02° 01' 17" E	80.00'
10	S 87° 23' 43" W	134.87'
11	N 01° 01' 17" E	44.84'
12	N 02° 01' 17" E	42.88'
13	S 87° 23' 43" W	42.88'
14	N 01° 01' 17" E	42.88'
15	N 02° 01' 17" E	42.88'
16	S 87° 23' 43" W	42.88'
17	N 01° 01' 17" E	42.88'
18	N 02° 01' 17" E	42.88'
19	S 87° 23' 43" W	42.88'
20	N 01° 01' 17" E	42.88'
21	N 02° 01' 17" E	42.88'
22	S 87° 23' 43" W	42.88'
23	N 01° 01' 17" E	42.88'
24	N 02° 01' 17" E	42.88'
25	S 87° 23' 43" W	42.88'
26	N 01° 01' 17" E	42.88'
27	N 02° 01' 17" E	42.88'
28	S 87° 23' 43" W	42.88'
29	N 01° 01' 17" E	42.88'
30	N 02° 01' 17" E	42.88'
31	S 87° 23' 43" W	42.88'
32	N 01° 01' 17" E	42.88'
33	N 02° 01' 17" E	42.88'
34	S 87° 23' 43" W	42.88'
35	N 01° 01' 17" E	42.88'
36	N 02° 01' 17" E	42.88'
37	S 87° 23' 43" W	42.88'
38	N 01° 01' 17" E	42.88'
39	N 02° 01' 17" E	42.88'
40	S 87° 23' 43" W	42.88'
41	N 01° 01' 17" E	42.88'
42	N 02° 01' 17" E	42.88'
43	S 87° 23' 43" W	42.88'
44	N 01° 01' 17" E	42.88'
45	N 02° 01' 17" E	42.88'
46	S 87° 23' 43" W	42.88'
47	N 01° 01' 17" E	42.88'
48	N 02° 01' 17" E	42.88'
49	S 87° 23' 43" W	42.88'
50	N 01° 01' 17" E	42.88'
51	N 02° 01' 17" E	42.88'
52	S 87° 23' 43" W	42.88'
53	N 01° 01' 17" E	42.88'
54	N 02° 01' 17" E	42.88'
55	S 87° 23' 43" W	42.88'
56	N 01° 01' 17" E	42.88'
57	N 02° 01' 17" E	42.88'
58	S 87° 23' 43" W	42.88'
59	N 01° 01' 17" E	42.88'
60	N 02° 01' 17" E	42.88'
61	S 87° 23' 43" W	42.88'
62	N 01° 01' 17" E	42.88'
63	N 02° 01' 17" E	42.88'
64	S 87° 23' 43" W	42.88'

CURVE	RADIUS	DELTA ANGLE	ARC LENGTH	CHORD BEARING	CHORD LENGTH	TANGENT
C1	300.00'	232° 21' 30"	148.80'	N 89° 52' 11" W	148.80'	26.00'
C2	15.00'	174° 24' 36"	23.67'	N 02° 01' 17" E	23.67'	26.00'
C3	273.00'	187° 24' 48"	87.30'	S 87° 23' 43" W	87.30'	44.84'
C4	315.00'	100° 02' 24"	271.80'	N 01° 01' 17" E	271.80'	134.87'
C5	280.00'	291° 41' 48"	380.80'	N 02° 01' 17" E	380.80'	223.33'
C6	300.00'	89° 01' 30"	188.40'	N 01° 01' 17" E	188.40'	26.00'
C7	1500.00'	0° 01' 30"	213.58'	N 02° 01' 17" E	213.58'	122.28'
C8	300.00'	77° 20' 00"	104.33'	N 01° 01' 17" E	104.33'	26.00'
C9	300.00'	271° 17' 24"	154.58'	N 01° 01' 17" E	154.58'	79.79'
C10	300.00'	0° 01' 30"	213.58'	N 02° 01' 17" E	213.58'	122.28'
C11	2000.00'	0° 01' 30"	80.00'	N 02° 01' 17" E	80.00'	40.00'
C12	295.00'	89° 01' 30"	400.47'	N 02° 01' 17" E	413.00'	294.58'
C13	30.00'	118° 52' 30"	51.69'	N 01° 01' 17" E	43.00'	25.00'
C14	30.00'	287° 02' 00"	224.48'	N 02° 01' 17" E	224.48'	62.11'
C15	30.00'	118° 52' 30"	51.69'	N 01° 01' 17" E	43.00'	25.00'
C16	30.00'	287° 02' 00"	224.48'	N 02° 01' 17" E	224.48'	62.11'
C17	30.00'	118° 52' 30"	51.69'	N 01° 01' 17" E	43.00'	25.00'
C18	30.00'	287° 02' 00"	224.48'	N 02° 01' 17" E	224.48'	62.11'
C19	30.00'	118° 52' 30"	51.69'	N 01° 01' 17" E	43.00'	25.00'
C20	30.00'	287° 02' 00"	224.48'	N 02° 01' 17" E	224.48'	62.11'
C21	30.00'	118° 52' 30"	51.69'	N 01° 01' 17" E	43.00'	25.00'
C22	30.00'	287° 02' 00"	224.48'	N 02° 01' 17" E	224.48'	62.11'
C23	30.00'	118° 52' 30"	51.69'	N 01° 01' 17" E	43.00'	25.00'
C24	30.00'	287° 02' 00"	224.48'	N 02° 01' 17" E	224.48'	62.11'
C25	30.00'	118° 52' 30"	51.69'	N 01° 01' 17" E	43.00'	25.00'
C26	30.00'	287° 02' 00"	224.48'	N 02° 01' 17" E	224.48'	62.11'
C27	30.00'	118° 52' 30"	51.69'	N 01° 01' 17" E	43.00'	25.00'
C28	30.00'	287° 02' 00"	224.48'	N 02° 01' 17" E	224.48'	62.11'
C29	30.00'	118° 52' 30"	51.69'	N 01° 01' 17" E	43.00'	25.00'
C30	30.00'	287° 02' 00"	224.48'	N 02° 01' 17" E	224.48'	62.11'
C31	30.00'	118° 52' 30"	51.69'	N 01° 01' 17" E	43.00'	25.00'
C32	30.00'	287° 02' 00"	224.48'	N 02° 01' 17" E	224.48'	62.11'
C33	30.00'	118° 52' 30"	51.69'	N 01° 01' 17" E	43.00'	25.00'
C34	30.00'	287° 02' 00"	224.48'	N 02° 01' 17" E	224.48'	62.11'
C35	30.00'	118° 52' 30"	51.69'	N 01° 01' 17" E	43.00'	25.00'
C36	30.00'	287° 02' 00"	224.48'	N 02° 01' 17" E	224.48'	62.11'

FIELDSTONE SEC 4
Plot No. 20060117
FBCPR



FIELDSTONE SEC 12

A SUBDIVISION OF 28.81 ACRES OF LAND
OUT OF THE
JOHN FREDERICK SURVEY, ABSTRACT No. 17
FORT BEND COUNTY, TEXAS
118 LOTS 3 RESERVES 5 BLOCKS
NOVEMBER 2015

DISTRICT	NAME
W-01	W-01
W-02	W-02
W-03	W-03
W-04	W-04
W-05	W-05
W-06	W-06
W-07	W-07
W-08	W-08
W-09	W-09
W-10	W-10
W-11	W-11
W-12	W-12
W-13	W-13
W-14	W-14
W-15	W-15
W-16	W-16
W-17	W-17
W-18	W-18
W-19	W-19
W-20	W-20
W-21	W-21
W-22	W-22
W-23	W-23
W-24	W-24
W-25	W-25
W-26	W-26
W-27	W-27
W-28	W-28
W-29	W-29
W-30	W-30
W-31	W-31
W-32	W-32
W-33	W-33
W-34	W-34
W-35	W-35
W-36	W-36
W-37	W-37
W-38	W-38
W-39	W-39
W-40	W-40
W-41	W-41
W-42	W-42
W-43	W-43
W-44	W-44
W-45	W-45
W-46	W-46
W-47	W-47
W-48	W-48
W-49	W-49
W-50	W-50
W-51	W-51
W-52	W-52
W-53	W-53
W-54	W-54
W-55	W-55
W-56	W-56
W-57	W-57
W-58	W-58
W-59	W-59
W-60	W-60
W-61	W-61
W-62	W-62
W-63	W-63
W-64	W-64
W-65	W-65
W-66	W-66
W-67	W-67
W-68	W-68
W-69	W-69
W-70	W-70
W-71	W-71
W-72	W-72
W-73	W-73
W-74	W-74
W-75	W-75
W-76	W-76
W-77	W-77
W-78	W-78
W-79	W-79
W-80	W-80
W-81	W-81
W-82	W-82
W-83	W-83
W-84	W-84
W-85	W-85
W-86	W-86
W-87	W-87
W-88	W-88
W-89	W-89
W-90	W-90
W-91	W-91
W-92	W-92
W-93	W-93
W-94	W-94
W-95	W-95
W-96	W-96
W-97	W-97
W-98	W-98
W-99	W-99
W-100	W-100

DEVELOPER/OWNER:
FIELDSTONE (HOUSTON) ASU V, L.L.P.,
8001 WESTMEADOW,
HOUSTON, TEXAS 77042
(713) 827-1015

ENGINEER:
JONES CARTER
1100 WEST 17TH STREET, SUITE 1000,
HOUSTON, TEXAS 77058
(713) 827-1015