

PLAT RECORDING SHEET

PLAT NAME: Glendale Lakes, Section 1

PLAT NO: _____

ACREAGE: 16.001

LEAGUE: I. & G.N. Railroad Co. Survey

ABSTRACT NUMBER: 352

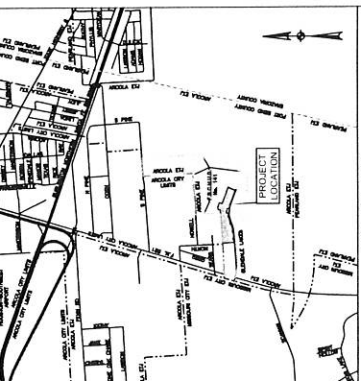
NUMBER OF BLOCKS: 2

NUMBER OF LOTS: 85

NUMBER OF RESERVES: 9

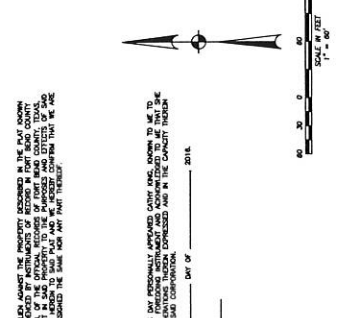
OWNERS: JNC Development Inc., a Texas Corporation

(DEPUTY CLERK)



VICINITY MAP
 DATE: 11-17-2016

1. SHOWS THE LOCATION OF THE PROJECT WITHIN THE SUBDIVISION BOUNDARIES WITH ALL OF THE LOTS AND BLOCKS AND ADJACENT STREETS AND LOTS AS SHOWN ON THE PLAT OF THE SUBDIVISION AS FILED IN THE PUBLIC RECORDS OF FORT BEND COUNTY, TEXAS. THE PROJECT LOCATION IS SHOWN WITH A RED BOUNDARY AND A RED DOTTED LINE.



STATE OF TEXAS
 COUNTY OF FORT BEND
 I, JAMES L. WATSON, ENGINEER, DO HEREBY CERTIFY THAT THE FOREGOING IS A TRUE AND CORRECT COPY OF THE ORIGINAL RECORD AS FILED IN THE PUBLIC RECORDS OF FORT BEND COUNTY, TEXAS, AND THAT THE SAME IS IN ACCORDANCE WITH THE REQUIREMENTS OF THE PUBLIC RECORDS ACT, CHAPTER 201, TEXAS GOVERNMENT CODE, AND THE REQUIREMENTS OF THE PUBLIC RECORDS ACT, CHAPTER 201, TEXAS GOVERNMENT CODE.

IN TESTAMENT WITNESS WHEREOF, I have hereunto set my hand and seal of office, this _____ day of _____, 2016.

BY: _____
 STATE OF TEXAS
 COUNTY OF _____
 BEFORE ME, THE UNDERSIGNED AUTHORITY, ON THIS DAY PERSONALLY APPEARED _____, known to me to be the person whose name and address are set forth in the foregoing instrument and acknowledged to me that he executed the same for the purposes and consideration therein expressed and in the capacity therein stated, and he acknowledged to me that he executed the same for the purposes and consideration therein expressed and in the capacity therein stated, and he acknowledged to me that he executed the same for the purposes and consideration therein expressed and in the capacity therein stated.

IN TESTAMENT WITNESS WHEREOF, I have hereunto set my hand and seal of office, this _____ day of _____, 2016.

BY: _____
 STATE OF TEXAS
 COUNTY OF _____
 BEFORE ME, THE UNDERSIGNED AUTHORITY, ON THIS DAY PERSONALLY APPEARED _____, known to me to be the person whose name and address are set forth in the foregoing instrument and acknowledged to me that he executed the same for the purposes and consideration therein expressed and in the capacity therein stated, and he acknowledged to me that he executed the same for the purposes and consideration therein expressed and in the capacity therein stated.

APPROVED BY THE COMMISSIONER OF FORT BEND COUNTY, TEXAS, THIS _____ DAY OF _____, 2016.

BY: _____
 COMMISSIONER, FORT BEND COUNTY, TEXAS

APPROVED BY THE COMMISSIONER OF FORT BEND COUNTY, TEXAS, THIS _____ DAY OF _____, 2016.

BY: _____
 COMMISSIONER, FORT BEND COUNTY, TEXAS

APPROVED BY THE COMMISSIONER OF FORT BEND COUNTY, TEXAS, THIS _____ DAY OF _____, 2016.

BY: _____
 COMMISSIONER, FORT BEND COUNTY, TEXAS

APPROVED BY THE COMMISSIONER OF FORT BEND COUNTY, TEXAS, THIS _____ DAY OF _____, 2016.

BY: _____
 COMMISSIONER, FORT BEND COUNTY, TEXAS

APPROVED BY THE COMMISSIONER OF FORT BEND COUNTY, TEXAS, THIS _____ DAY OF _____, 2016.

BY: _____
 COMMISSIONER, FORT BEND COUNTY, TEXAS

APPROVED BY THE COMMISSIONER OF FORT BEND COUNTY, TEXAS, THIS _____ DAY OF _____, 2016.

BY: _____
 COMMISSIONER, FORT BEND COUNTY, TEXAS

APPROVED BY THE COMMISSIONER OF FORT BEND COUNTY, TEXAS, THIS _____ DAY OF _____, 2016.

BY: _____
 COMMISSIONER, FORT BEND COUNTY, TEXAS

APPROVED BY THE COMMISSIONER OF FORT BEND COUNTY, TEXAS, THIS _____ DAY OF _____, 2016.

BY: _____
 COMMISSIONER, FORT BEND COUNTY, TEXAS

APPROVED BY THE COMMISSIONER OF FORT BEND COUNTY, TEXAS, THIS _____ DAY OF _____, 2016.

BY: _____
 COMMISSIONER, FORT BEND COUNTY, TEXAS

APPROVED BY THE COMMISSIONER OF FORT BEND COUNTY, TEXAS, THIS _____ DAY OF _____, 2016.

BY: _____
 COMMISSIONER, FORT BEND COUNTY, TEXAS

APPROVED BY THE COMMISSIONER OF FORT BEND COUNTY, TEXAS, THIS _____ DAY OF _____, 2016.

BY: _____
 COMMISSIONER, FORT BEND COUNTY, TEXAS

APPROVED BY THE COMMISSIONER OF FORT BEND COUNTY, TEXAS, THIS _____ DAY OF _____, 2016.

BY: _____
 COMMISSIONER, FORT BEND COUNTY, TEXAS

APPROVED BY THE COMMISSIONER OF FORT BEND COUNTY, TEXAS, THIS _____ DAY OF _____, 2016.

BY: _____
 COMMISSIONER, FORT BEND COUNTY, TEXAS

APPROVED BY THE COMMISSIONER OF FORT BEND COUNTY, TEXAS, THIS _____ DAY OF _____, 2016.

BY: _____
 COMMISSIONER, FORT BEND COUNTY, TEXAS

APPROVED BY THE COMMISSIONER OF FORT BEND COUNTY, TEXAS, THIS _____ DAY OF _____, 2016.

BY: _____
 COMMISSIONER, FORT BEND COUNTY, TEXAS

APPROVED BY THE COMMISSIONER OF FORT BEND COUNTY, TEXAS, THIS _____ DAY OF _____, 2016.

BY: _____
 COMMISSIONER, FORT BEND COUNTY, TEXAS

APPROVED BY THE COMMISSIONER OF FORT BEND COUNTY, TEXAS, THIS _____ DAY OF _____, 2016.

BY: _____
 COMMISSIONER, FORT BEND COUNTY, TEXAS

APPROVED BY THE COMMISSIONER OF FORT BEND COUNTY, TEXAS, THIS _____ DAY OF _____, 2016.

BY: _____
 COMMISSIONER, FORT BEND COUNTY, TEXAS

APPROVED BY THE COMMISSIONER OF FORT BEND COUNTY, TEXAS, THIS _____ DAY OF _____, 2016.

BY: _____
 COMMISSIONER, FORT BEND COUNTY, TEXAS

APPROVED BY THE COMMISSIONER OF FORT BEND COUNTY, TEXAS, THIS _____ DAY OF _____, 2016.

BY: _____
 COMMISSIONER, FORT BEND COUNTY, TEXAS

APPROVED BY THE COMMISSIONER OF FORT BEND COUNTY, TEXAS, THIS _____ DAY OF _____, 2016.

BY: _____
 COMMISSIONER, FORT BEND COUNTY, TEXAS

APPROVED BY THE COMMISSIONER OF FORT BEND COUNTY, TEXAS, THIS _____ DAY OF _____, 2016.

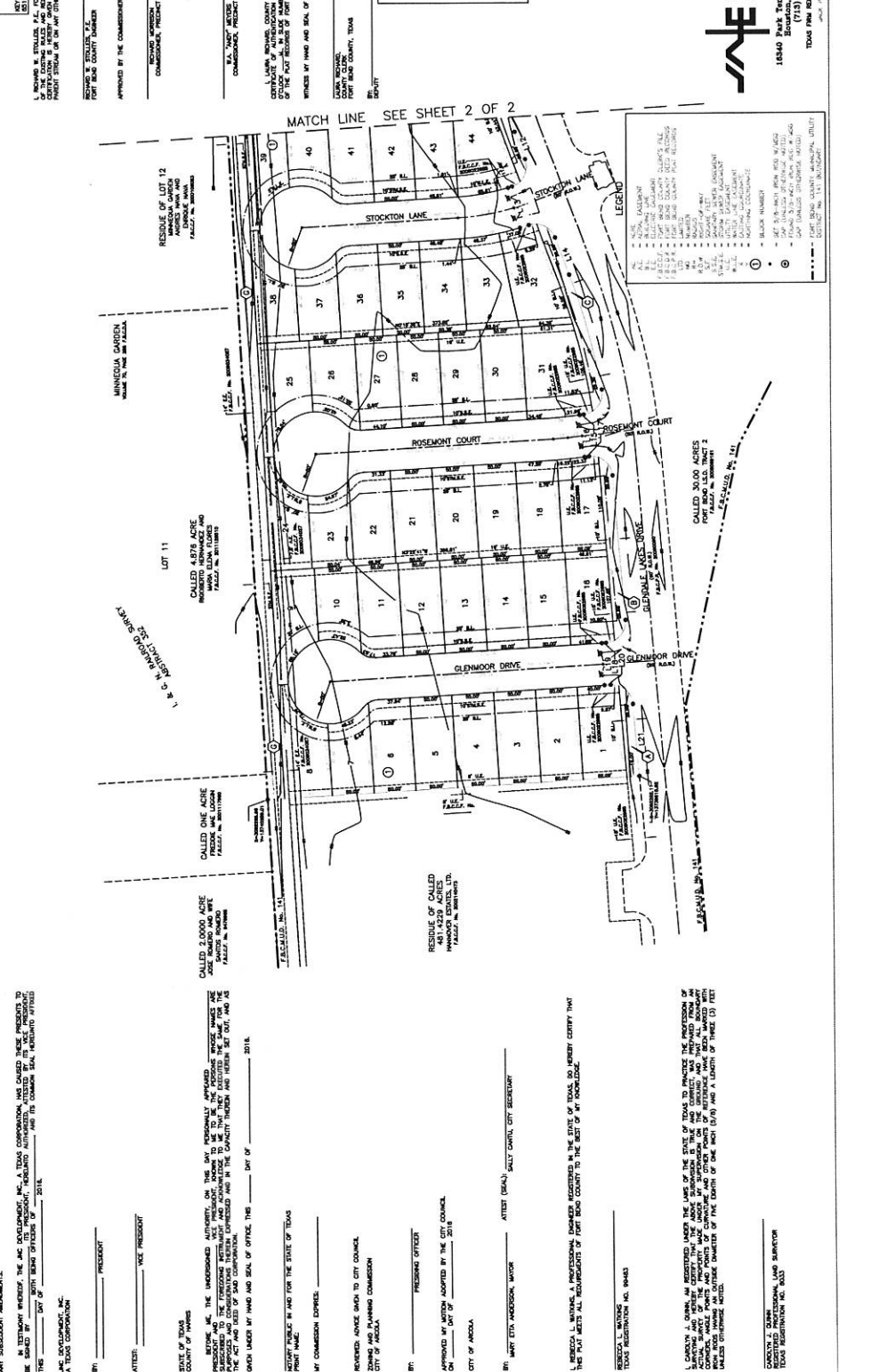
BY: _____
 COMMISSIONER, FORT BEND COUNTY, TEXAS

APPROVED BY THE COMMISSIONER OF FORT BEND COUNTY, TEXAS, THIS _____ DAY OF _____, 2016.

BY: _____
 COMMISSIONER, FORT BEND COUNTY, TEXAS

APPROVED BY THE COMMISSIONER OF FORT BEND COUNTY, TEXAS, THIS _____ DAY OF _____, 2016.

BY: _____
 COMMISSIONER, FORT BEND COUNTY, TEXAS



GLENDALE LAKES SECTION 1
 A SUBDIVISION OF 16,001 ACRES OF LAND
 LOCATED IN THE COUNTY OF FORT BEND, TEXAS
 1 & C.N. BARRINGTON, SURVEYOR
 FORT BEND COUNTY, TEXAS
 85 LOTS 2 BLOCKS 9 RESERVES
 DATE JANUARY, 2016 SCALE: 1" = 60'
 ENGINEER: JNC DEVELOPMENT, INC. A TEXAS CORPORATION
 SURVEYOR: r.g. miller ENGINEERS
 16340 The Woodlands Drive, Suite 300
 Houston, Texas 77055
 (713) 481-9600
 TEXAS REGISTRATION NO. 10047190
 STATE OF TEXAS REGISTRATION NO. 10047190

GLENDALE LAKES SECTION 1
 A SUBDIVISION OF 16,001 ACRES OF LAND
 LOCATED IN THE COUNTY OF FORT BEND, TEXAS
 1 & C.N. BARRINGTON, SURVEYOR
 FORT BEND COUNTY, TEXAS
 85 LOTS 2 BLOCKS 9 RESERVES
 DATE JANUARY, 2016 SCALE: 1" = 60'
 ENGINEER: JNC DEVELOPMENT, INC. A TEXAS CORPORATION
 SURVEYOR: r.g. miller ENGINEERS
 16340 The Woodlands Drive, Suite 300
 Houston, Texas 77055
 (713) 481-9600
 TEXAS REGISTRATION NO. 10047190
 STATE OF TEXAS REGISTRATION NO. 10047190

GLENDALE LAKES SECTION 1
 A SUBDIVISION OF 16,001 ACRES OF LAND
 LOCATED IN THE COUNTY OF FORT BEND, TEXAS
 1 & C.N. BARRINGTON, SURVEYOR
 FORT BEND COUNTY, TEXAS
 85 LOTS 2 BLOCKS 9 RESERVES
 DATE JANUARY, 2016 SCALE: 1" = 60'
 ENGINEER: JNC DEVELOPMENT, INC. A TEXAS CORPORATION
 SURVEYOR: r.g. miller ENGINEERS
 16340 The Woodlands Drive, Suite 300
 Houston, Texas 77055
 (713) 481-9600
 TEXAS REGISTRATION NO. 10047190
 STATE OF TEXAS REGISTRATION NO. 10047190

GLENDALE LAKES SECTION 1
 A SUBDIVISION OF 16,001 ACRES OF LAND
 LOCATED IN THE COUNTY OF FORT BEND, TEXAS
 1 & C.N. BARRINGTON, SURVEYOR
 FORT BEND COUNTY, TEXAS
 85 LOTS 2 BLOCKS 9 RESERVES
 DATE JANUARY, 2016 SCALE: 1" = 60'
 ENGINEER: JNC DEVELOPMENT, INC. A TEXAS CORPORATION
 SURVEYOR: r.g. miller ENGINEERS
 16340 The Woodlands Drive, Suite 300
 Houston, Texas 77055
 (713) 481-9600
 TEXAS REGISTRATION NO. 10047190
 STATE OF TEXAS REGISTRATION NO. 10047190

