

**REVIEW BY FORT BEND COUNTY COMMISSIONERS COURT**

On this 8th day of March, 2016, Commissioners Court came on to be heard and reviewed the accompanying notice of LECON, Inc.

Job Location 2400 Windswept Dr, Richmond, TX 77406

Date 2/22/2016 Bond No. no bond required, Permit No. 2016-5640 to make use of certain Fort Bend County property subject to, "A Revised Order Regulating the Laying, Construction, Maintenance, and Repair of Buried Cables, Conduits, and Pole Lines, In, Under, Across or Along Roads, Streets, Highways, and Drainage Ditches in Fort Bend County, Texas, Under the Jurisdiction of the Commissioners Court of Fort Bend County, Texas," as passed by the Commissioners Court of Fort Bend County, Texas the 3rd day of August, 1987, recorded in Volume \_\_\_\_\_ of the Minutes of the Commissioners Court of Fort Bend County, Texas, to the extent that such order is not inconsistent with Article 1436a, Vernon's Texas Civil Statutes. Upon Motion of Commissioner \_\_\_\_\_, seconded by Commissioner \_\_\_\_\_, duly put and carried, it is ORDERED, ADJUDGED AND

DECREED that said notice of said above purpose is hereby acknowledged by the Commissioners Court of Fort Bend County, Texas, and that said notice be placed on record according to the regulation order thereof.

Notes:

1. Evidence of review by the Commissioners Court must be kept on the job site and failure to do so constitutes grounds for job shutdown.
2. Written notices are required:
  - a. 48 hours in advance of construction start up, and
  - b. when construction is completed and ready for final inspection
 Mail notices to: Permit Administrator  
 Fort Bend County Engineering  
 301 Jackson Street  
 Richmond, Texas 77469  
 281-633-7500
3. This permit expires one (1) year from date of permit if construction has not commenced.

By: *C. Charles O. ...*  
for County Engineer

Presented to Commissioners Court and approved.  
Recorded in Volume \_\_\_\_\_  
Minutes of Commissioners Court

By: N/A  
Drainage District Engineer/Manager

Clerk of Commissioners Court  
By: \_\_\_\_\_  
Deputy



# CONSTRUCTION OF THE GROVE 4 & 5 DRAINAGE IMPROVEMENTS IN FORT BEND COUNTY, TEXAS FOR

## PECAN GROVE MUNICIPAL UTILITY DISTRICT

### INDEX OF DRAWINGS

SHEET No.	TITLE
1	COVER SHEET & INDEX
2	PROJECT OVERALL & PREVENTION PREVENTION DETAILS
3	CONSTRUCTION NOTES

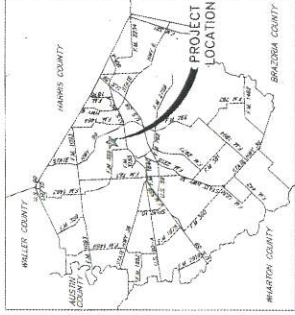
PLAN & PROFILE OUTFALL WATER	
4	PLAN & PROFILE BASELINE A
5	PLAN & PROFILE BASELINE B
6	PLAN & PROFILE BASELINE C
7	PLAN & PROFILE BASELINE D
8	PLAN & PROFILE BASELINE E
9	PLAN & PROFILE BASELINE F
10	PLAN & PROFILE BASELINE G
11	PLAN & PROFILE BASELINE H
12	PLAN & PROFILE BASELINE I
13	PLAN & PROFILE BASELINE J
14	PLAN & PROFILE BASELINE K
15	PLAN & PROFILE BASELINE L
16	PLAN & PROFILE BASELINE M
17	PLAN & PROFILE BASELINE N

PROJECT DETAILS	
18	MISCELLANEOUS
19	CITY OF RICHMOND STANDARD CONSTRUCTION DETAILS - STORM SEWER
20	CITY OF RICHMOND STANDARD CONSTRUCTION DETAILS - SANITARY SEWER
21	CITY OF RICHMOND STANDARD CONSTRUCTION DETAILS - WATER
22	CITY OF RICHMOND STANDARD CONSTRUCTION DETAILS - FLOW CONTROL
23	CITY OF RICHMOND STANDARD CONSTRUCTION DETAILS - PAVING I
24	CITY OF RICHMOND STANDARD CONSTRUCTION DETAILS - PAVING II
	TRAFFIC CONTROL PLAN

CITY OF RICHMOND, TEXAS  
APPROVED BY: \_\_\_\_\_

TERESA VELA  
City Engineer  
DATE: 11/13/14  
KELLY R. KALYZA, P.E.  
City Engineer  
DATE: 11/11/14

NOTE: Approval Void After One Year From Date Signed. If Construction Has Not Begun.



NOTES  
These sheets were prepared to meet or exceed the specifications and requirements of City of Richmond and Fort Bend County as currently amended. Approval by Fort Bend County will be deemed void if construction has not begun within one year of approval date.

Construction will be monitored under the supervision of a licensed professional engineer of JONES & CARTER, INC.  
Contractor shall notify the Fort Bend County Engineering Department at least 48 hours prior to commencement at construction@fortbendcounty.gov.

City of Richmond, an Equal Opportunity Employer, is an affirmative action employer. Minorities and women are encouraged to apply. For more information, contact Human Resources at (713) 343-2020.



FOR REVIEW ONLY  
NOT FOR CONSTRUCTION

CALL BEFORE YOU DIG!!!  
TEXAS 811 (Dial 811)  
LONE STAR STAR CENTER  
1-800-832-8344

FORT BEND COUNTY ENGINEER  
ENGINEER: Kelly R. KalYZa  
DATE: 11/11/14  
THESE SIGNATURES ARE VOID IF CONSTRUCTION HAS NOT BEGUN WITHIN ONE (1) YEAR FROM DATE OF APPROVAL.  
APPROVED: \_\_\_\_\_  
DATE: 11/11/14

PECAN GROVE MUNICIPAL UTILITY DISTRICT  
DATE: 11-11-14  
SIGNATURE: \_\_\_\_\_  
SIGNATURE VALID FOR ONE (1) YEAR

JONES & CARTER, INC. PROJECT NUMBER 00034-0368-01  
NOVEMBER 2014  
JONES & CARTER, INC.  
ENGINEERS-PLANNERS-SURVEYORS  
6010 Flowerfield, Houston, Texas 77021 (832) 343-2020





**BENCHMARK**  
 NGS Monument No. 1074, Benchmark Cap on Top of NW End of  
 Lanes of U.S. Hwy 90A, 1 Mile SW of Junction of LA 208  
 and 1.45 Miles NE of Hammond Court Home.  
 Elevation = 42.85' (NAVD 83)

**I.B.M. No.**  
 COUNTY AND PARISH OF THE JURISDICTION OF THIS PLAN  
 COUNTY AND PARISH OF ORLEANS, STATE OF LOUISIANA  
 ELEVATION = 42.85' (NAVD 83)

**I.B.M. No.**  
 COUNTY AND PARISH OF THE JURISDICTION OF THIS PLAN  
 COUNTY AND PARISH OF ORLEANS, STATE OF LOUISIANA  
 ELEVATION = 79.50'

**I.B.M. No.**  
 COUNTY AND PARISH OF THE JURISDICTION OF THIS PLAN  
 COUNTY AND PARISH OF ORLEANS, STATE OF LOUISIANA  
 ELEVATION = 79.50'

**NOTE**  
 THE ENGINEER HAS REVIEWED THE RECORD DRAWINGS AND  
 FOUND THEM TO BE IN ACCORDANCE WITH THE REQUIREMENTS OF THE  
 PROFESSIONAL ENGINEER'S ACT AND THE REQUIREMENTS OF THE  
 BOARD OF PROFESSIONAL ENGINEERS AND SURVEYORS OF THE STATE OF  
 LOUISIANA. THE ENGINEER HAS REVIEWED THE RECORD DRAWINGS AND  
 FOUND THEM TO BE IN ACCORDANCE WITH THE REQUIREMENTS OF THE  
 PROFESSIONAL ENGINEER'S ACT AND THE REQUIREMENTS OF THE  
 BOARD OF PROFESSIONAL ENGINEERS AND SURVEYORS OF THE STATE OF  
 LOUISIANA.

**APPROVED**  
 DATE: 12/1/14

**SCALE**  
 1" = 20'

**PRIVATE UTILITY LINES SHOWN**  
 ARE NOT TO BE CONSIDERED AS GUARANTEED UNLESS SHOWN  
 OTHERWISE BY THIS PLAN.

**THE GROVE 4 & 5  
 GRASSLAND IMPROVEMENTS  
 PLAN & PROFILE  
 BASELINE A  
 STA 1+00 - 3+00**

**J.C. JONES & CARTER, INC.**  
 ENGINEERS & ARCHITECTS  
 1411 BROADWAY SUITE 1000  
 NEW ORLEANS, LOUISIANA 70112  
 PHONE: 504-581-1000  
 FAX: 504-581-1001  
 WWW: JONES-CARTER.COM

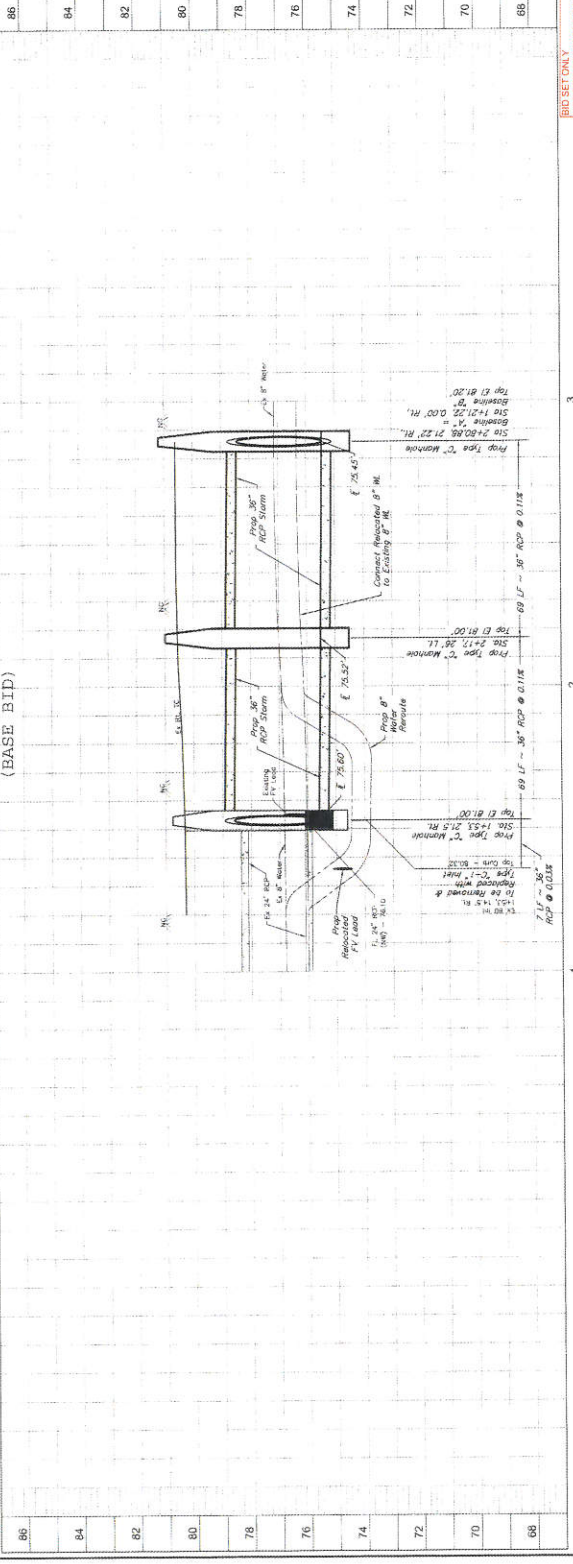
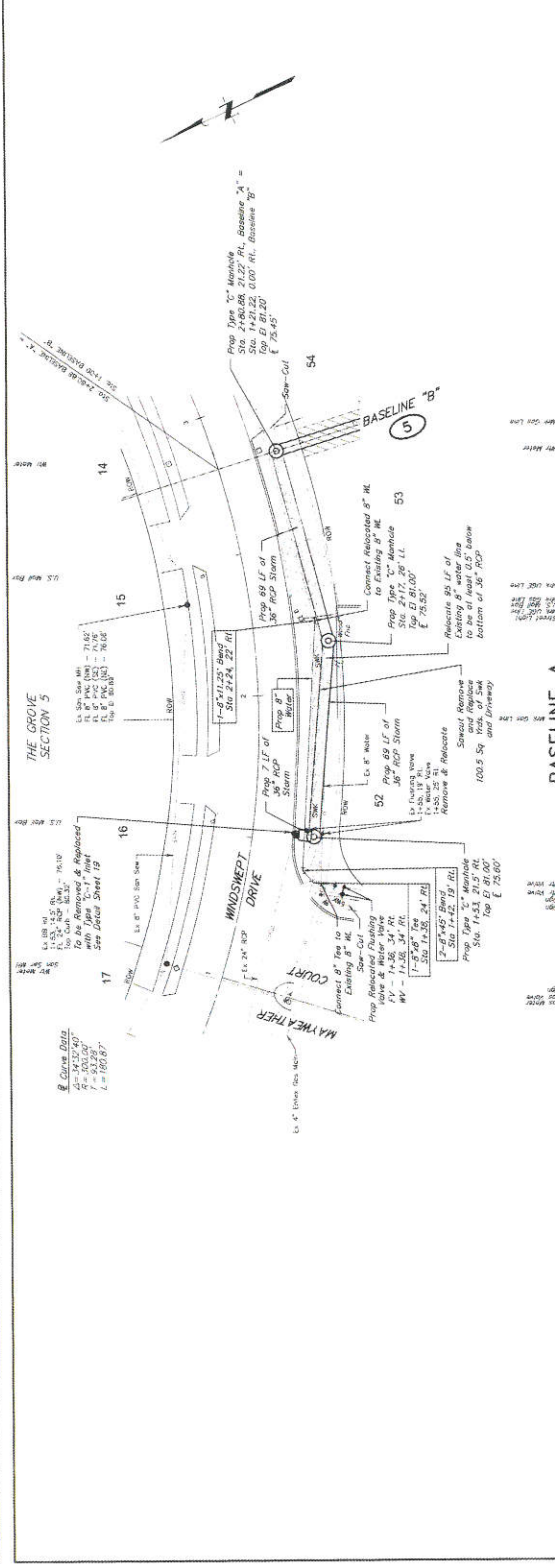
**PROJECT**  
 THE GROVE 4 & 5  
 GRASSLAND IMPROVEMENTS  
 PLAN & PROFILE  
 BASELINE A  
 STA 1+00 - 3+00

**DATE**  
 12/1/14

**PROJECT NO.**  
 14-0001

**DATE**  
 12/1/14

**DATE**  
 12/1/14



**86**

**84**

**82**

**80**

**78**

**76**

**74**

**72**

**70**

**68**

**1**

**2**

**3**

**4**

**5**

**6**

**7**

**8**

**9**

**10**

**11**

**12**

**13**

**14**

**15**

**16**

**17**

**18**

**19**

**20**

**21**

**22**

**23**

**24**

**25**

**26**

**27**

**28**

**29**

**30**

**31**

**32**

**33**

**34**

**35**

**36**

**37**

**38**

**39**

**40**

**41**

**42**

**43**

**44**

**45**

**46**

**47**

**48**

**49**

**50**

**51**

**52**

**53**

**54**

**55**

**56**

**57**

**58**

**59**

**60**

**61**

**62**

**63**

**64**

**65**

**66**

**67**

**68**

**69**

**70**

**71**

**72**

**73**

**74**

**75**

**76**

**77**

**78**

**79**

**80**

**81**

**82**

**83**

**84**

**85**

**86**

**87**

**88**

**89**

**90**

**91**

**92**

**93**

**94**

**95**

**96**

**97**

**98**

**99**

**100**

**101**

**102**

**103**

**104**

**105**

**106**

**107**

**108**

**109**

**110**

**111**

**112**

**113**

**114**

**115**

**116**

**117**

**118**

**119**

**120**

**121**

**122**

**123**

**124**

**125**

**126**

**127**

**128**

**129**

**130**

**131**

**132**

**133**

**134**

**135**

**136**

**137**

**138**

**139**

**140**

**141**

**142**

**143**

**144**

**145**

**146**

**147**

**148**

**149**

**150**

**151**

**152**

**153**

**154**

**155**

**156**

**157**

**158**

**159**

**160**

**161**

**162**

**163**

**164**

**165**

**166**

**167**

**168**

**169**

**170**

**171**

**172**

**173**

**174**

**175**

**176**

**177**

**178**

**179**

**180**

**181**

**182**

**183**

**184**

**185**

**186**

**187**

**188**

**189**

**190**

**191**

**192**

**193**

**194**

**195**

**196**

**197**

**198**

**199**

**200**

**201**

**202**

**203**

**204**

**205**

**206**

**207**

**208**

**209**

**210**

**211**

**212**

**213**

**214**

**215**

**216**

**217**

**218**

**219**

**220**

**221**

**222**

**223**

**224**

**225**

**226**

**227**

**228**

**229**



**BENCHMARK**  
 NGVD Measured by USGS, El Paso, Texas, 10/14/1951, of the NE Anchorage of a concrete bridge-jump structure located on the NE corner of the intersection of the intersection of Highway 144 and West Street, El Paso, Texas, Station 1+00.00, and 1+05.00, the 4th Street and 5th Street, El Paso, Texas, Station 1+00.00 and 1+05.00.

**CONTRACTOR'S NOTE**  
 THE CONTRACTOR SHALL BE RESPONSIBLE FOR OBTAINING ALL NECESSARY PERMITS AND APPROVALS FROM THE CITY OF EL PASO AND THE STATE OF TEXAS. THE CONTRACTOR SHALL BE RESPONSIBLE FOR OBTAINING ALL NECESSARY PERMITS AND APPROVALS FROM THE CITY OF EL PASO AND THE STATE OF TEXAS. THE CONTRACTOR SHALL BE RESPONSIBLE FOR OBTAINING ALL NECESSARY PERMITS AND APPROVALS FROM THE CITY OF EL PASO AND THE STATE OF TEXAS.

**SECTION 5**  
 THE GROVE 4 & 5  
 DRAINAGE IMPROVEMENTS  
 PLAN & PROFILE  
 BASELINE C  
 STA 1+00 - 2+50

**J.C. JONES & CARTER, INC.**  
 ENGINEERS  
 1400 W. CALDWELL STREET  
 EL PASO, TEXAS 79902

**APPROVED**  
 DATE: 12/14/14

**PRIVATE UTILITY LINES SHOWN**  
 ALIGNED TO THE CENTERLINE OF THE ROAD

**PECAN GROVE MUNICIPAL UTILITY DISTRICT**  
 FORT BEND COUNTY, TEXAS

**THE GROVE 4 & 5**  
 DRAINAGE IMPROVEMENTS  
 PLAN & PROFILE  
 BASELINE C  
 STA 1+00 - 2+50

**J.C. JONES & CARTER, INC.**  
 ENGINEERS  
 1400 W. CALDWELL STREET  
 EL PASO, TEXAS 79902

**PECAN GROVE MUNICIPAL UTILITY DISTRICT**  
 FORT BEND COUNTY, TEXAS

**THE GROVE 4 & 5**  
 DRAINAGE IMPROVEMENTS  
 PLAN & PROFILE  
 BASELINE C  
 STA 1+00 - 2+50

**J.C. JONES & CARTER, INC.**  
 ENGINEERS  
 1400 W. CALDWELL STREET  
 EL PASO, TEXAS 79902

**PECAN GROVE MUNICIPAL UTILITY DISTRICT**  
 FORT BEND COUNTY, TEXAS

**THE GROVE 4 & 5**  
 DRAINAGE IMPROVEMENTS  
 PLAN & PROFILE  
 BASELINE C  
 STA 1+00 - 2+50

**J.C. JONES & CARTER, INC.**  
 ENGINEERS  
 1400 W. CALDWELL STREET  
 EL PASO, TEXAS 79902

**PECAN GROVE MUNICIPAL UTILITY DISTRICT**  
 FORT BEND COUNTY, TEXAS

**THE GROVE 4 & 5**  
 DRAINAGE IMPROVEMENTS  
 PLAN & PROFILE  
 BASELINE C  
 STA 1+00 - 2+50

**J.C. JONES & CARTER, INC.**  
 ENGINEERS  
 1400 W. CALDWELL STREET  
 EL PASO, TEXAS 79902

**PECAN GROVE MUNICIPAL UTILITY DISTRICT**  
 FORT BEND COUNTY, TEXAS

**THE GROVE 4 & 5**  
 DRAINAGE IMPROVEMENTS  
 PLAN & PROFILE  
 BASELINE C  
 STA 1+00 - 2+50

**J.C. JONES & CARTER, INC.**  
 ENGINEERS  
 1400 W. CALDWELL STREET  
 EL PASO, TEXAS 79902

**PECAN GROVE MUNICIPAL UTILITY DISTRICT**  
 FORT BEND COUNTY, TEXAS

**THE GROVE 4 & 5**  
 DRAINAGE IMPROVEMENTS  
 PLAN & PROFILE  
 BASELINE C  
 STA 1+00 - 2+50

**J.C. JONES & CARTER, INC.**  
 ENGINEERS  
 1400 W. CALDWELL STREET  
 EL PASO, TEXAS 79902

**PECAN GROVE MUNICIPAL UTILITY DISTRICT**  
 FORT BEND COUNTY, TEXAS

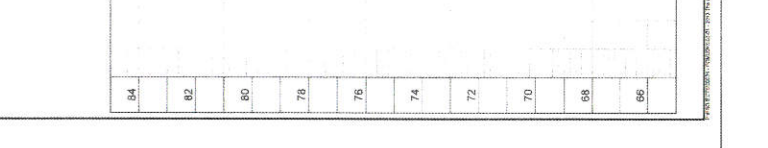
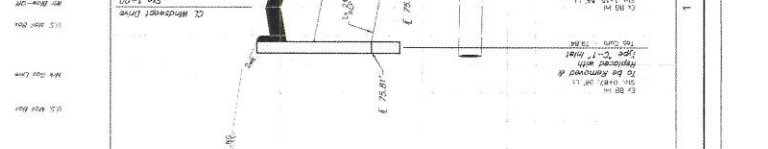
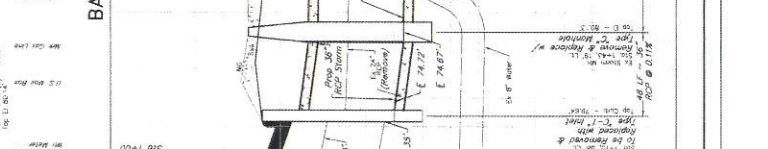
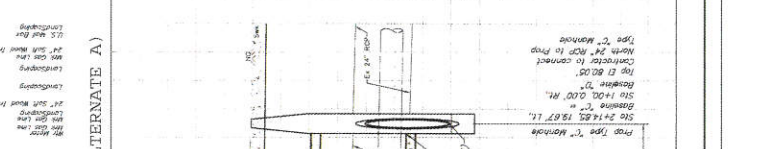
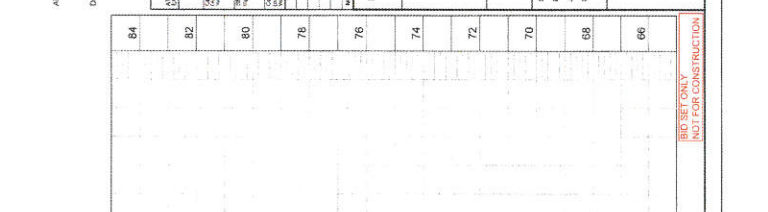
**THE GROVE 4 & 5**  
 DRAINAGE IMPROVEMENTS  
 PLAN & PROFILE  
 BASELINE C  
 STA 1+00 - 2+50

**J.C. JONES & CARTER, INC.**  
 ENGINEERS  
 1400 W. CALDWELL STREET  
 EL PASO, TEXAS 79902

**PECAN GROVE MUNICIPAL UTILITY DISTRICT**  
 FORT BEND COUNTY, TEXAS

**THE GROVE 4 & 5**  
 DRAINAGE IMPROVEMENTS  
 PLAN & PROFILE  
 BASELINE C  
 STA 1+00 - 2+50

**J.C. JONES & CARTER, INC.**  
 ENGINEERS  
 1400 W. CALDWELL STREET  
 EL PASO, TEXAS 79902



**BASELINE C (ALTERNATE A)**

84  
82  
80  
78  
76  
74  
72  
70  
68  
66

84  
82  
80  
78  
76  
74  
72  
70  
68  
66

84  
82  
80  
78  
76  
74  
72  
70  
68  
66

84  
82  
80  
78  
76  
74  
72  
70  
68  
66

84  
82  
80  
78  
76  
74  
72  
70  
68  
66

84  
82  
80  
78  
76  
74  
72  
70  
68  
66

84  
82  
80  
78  
76  
74  
72  
70  
68  
66

84  
82  
80  
78  
76  
74  
72  
70  
68  
66

84  
82  
80  
78  
76  
74  
72  
70  
68  
66

84  
82  
80  
78  
76  
74  
72  
70  
68  
66

84  
82  
80  
78  
76  
74  
72  
70  
68  
66

84  
82  
80  
78  
76  
74  
72  
70  
68  
66

**PECAN GROVE MUNICIPAL UTILITY DISTRICT**  
 FORT BEND COUNTY, TEXAS

**THE GROVE 4 & 5**  
 DRAINAGE IMPROVEMENTS  
 PLAN & PROFILE  
 BASELINE C  
 STA 1+00 - 2+50

**J.C. JONES & CARTER, INC.**  
 ENGINEERS  
 1400 W. CALDWELL STREET  
 EL PASO, TEXAS 79902

**PECAN GROVE MUNICIPAL UTILITY DISTRICT**  
 FORT BEND COUNTY, TEXAS

**THE GROVE 4 & 5**  
 DRAINAGE IMPROVEMENTS  
 PLAN & PROFILE  
 BASELINE C  
 STA 1+00 - 2+50

**J.C. JONES & CARTER, INC.**  
 ENGINEERS  
 1400 W. CALDWELL STREET  
 EL PASO, TEXAS 79902

**PECAN GROVE MUNICIPAL UTILITY DISTRICT**  
 FORT BEND COUNTY, TEXAS

**THE GROVE 4 & 5**  
 DRAINAGE IMPROVEMENTS  
 PLAN & PROFILE  
 BASELINE C  
 STA 1+00 - 2+50

**J.C. JONES & CARTER, INC.**  
 ENGINEERS  
 1400 W. CALDWELL STREET  
 EL PASO, TEXAS 79902

**PECAN GROVE MUNICIPAL UTILITY DISTRICT**  
 FORT BEND COUNTY, TEXAS

**THE GROVE 4 & 5**  
 DRAINAGE IMPROVEMENTS  
 PLAN & PROFILE  
 BASELINE C  
 STA 1+00 - 2+50

**J.C. JONES & CARTER, INC.**  
 ENGINEERS  
 1400 W. CALDWELL STREET  
 EL PASO, TEXAS 79902

**PECAN GROVE MUNICIPAL UTILITY DISTRICT**  
 FORT BEND COUNTY, TEXAS

**BENCHMARKS**  
 NGS Monument No. 1991A, Brass Cap on Top of NW End of  
 Lines of U.S. Hwy 90A, S. 1/4 Sec. 30, T. 14N, R. 10E, S. 1/4  
 and 1/4 S. 20E NE of Richmond Court House  
 Elevation = 42.86' (NAVD 83)

**PERMANENT MONUMENTS**  
 1. E.B.M. 2C  
 2. E.B.M. 2D  
 3. E.B.M. 2E  
 4. E.B.M. 2F  
 5. E.B.M. 2G  
 6. E.B.M. 2H  
 7. E.B.M. 2I  
 8. E.B.M. 2J  
 9. E.B.M. 2K  
 10. E.B.M. 2L  
 11. E.B.M. 2M  
 12. E.B.M. 2N  
 13. E.B.M. 2O  
 14. E.B.M. 2P  
 15. E.B.M. 2Q  
 16. E.B.M. 2R  
 17. E.B.M. 2S  
 18. E.B.M. 2T  
 19. E.B.M. 2U  
 20. E.B.M. 2V  
 21. E.B.M. 2W  
 22. E.B.M. 2X  
 23. E.B.M. 2Y  
 24. E.B.M. 2Z  
 25. E.B.M. 3A  
 26. E.B.M. 3B  
 27. E.B.M. 3C  
 28. E.B.M. 3D  
 29. E.B.M. 3E  
 30. E.B.M. 3F  
 31. E.B.M. 3G  
 32. E.B.M. 3H  
 33. E.B.M. 3I  
 34. E.B.M. 3J  
 35. E.B.M. 3K  
 36. E.B.M. 3L  
 37. E.B.M. 3M  
 38. E.B.M. 3N  
 39. E.B.M. 3O  
 40. E.B.M. 3P  
 41. E.B.M. 3Q  
 42. E.B.M. 3R  
 43. E.B.M. 3S  
 44. E.B.M. 3T  
 45. E.B.M. 3U  
 46. E.B.M. 3V  
 47. E.B.M. 3W  
 48. E.B.M. 3X  
 49. E.B.M. 3Y  
 50. E.B.M. 3Z  
 51. E.B.M. 4A  
 52. E.B.M. 4B  
 53. E.B.M. 4C  
 54. E.B.M. 4D  
 55. E.B.M. 4E  
 56. E.B.M. 4F  
 57. E.B.M. 4G  
 58. E.B.M. 4H  
 59. E.B.M. 4I  
 60. E.B.M. 4J  
 61. E.B.M. 4K  
 62. E.B.M. 4L  
 63. E.B.M. 4M  
 64. E.B.M. 4N  
 65. E.B.M. 4O  
 66. E.B.M. 4P  
 67. E.B.M. 4Q  
 68. E.B.M. 4R  
 69. E.B.M. 4S  
 70. E.B.M. 4T  
 71. E.B.M. 4U  
 72. E.B.M. 4V  
 73. E.B.M. 4W  
 74. E.B.M. 4X  
 75. E.B.M. 4Y  
 76. E.B.M. 4Z  
 77. E.B.M. 5A  
 78. E.B.M. 5B  
 79. E.B.M. 5C  
 80. E.B.M. 5D  
 81. E.B.M. 5E  
 82. E.B.M. 5F  
 83. E.B.M. 5G  
 84. E.B.M. 5H  
 85. E.B.M. 5I  
 86. E.B.M. 5J  
 87. E.B.M. 5K  
 88. E.B.M. 5L  
 89. E.B.M. 5M  
 90. E.B.M. 5N  
 91. E.B.M. 5O  
 92. E.B.M. 5P  
 93. E.B.M. 5Q  
 94. E.B.M. 5R  
 95. E.B.M. 5S  
 96. E.B.M. 5T  
 97. E.B.M. 5U  
 98. E.B.M. 5V  
 99. E.B.M. 5W  
 100. E.B.M. 5X  
 101. E.B.M. 5Y  
 102. E.B.M. 5Z  
 103. E.B.M. 6A  
 104. E.B.M. 6B  
 105. E.B.M. 6C  
 106. E.B.M. 6D  
 107. E.B.M. 6E  
 108. E.B.M. 6F  
 109. E.B.M. 6G  
 110. E.B.M. 6H  
 111. E.B.M. 6I  
 112. E.B.M. 6J  
 113. E.B.M. 6K  
 114. E.B.M. 6L  
 115. E.B.M. 6M  
 116. E.B.M. 6N  
 117. E.B.M. 6O  
 118. E.B.M. 6P  
 119. E.B.M. 6Q  
 120. E.B.M. 6R  
 121. E.B.M. 6S  
 122. E.B.M. 6T  
 123. E.B.M. 6U  
 124. E.B.M. 6V  
 125. E.B.M. 6W  
 126. E.B.M. 6X  
 127. E.B.M. 6Y  
 128. E.B.M. 6Z  
 129. E.B.M. 7A  
 130. E.B.M. 7B  
 131. E.B.M. 7C  
 132. E.B.M. 7D  
 133. E.B.M. 7E  
 134. E.B.M. 7F  
 135. E.B.M. 7G  
 136. E.B.M. 7H  
 137. E.B.M. 7I  
 138. E.B.M. 7J  
 139. E.B.M. 7K  
 140. E.B.M. 7L  
 141. E.B.M. 7M  
 142. E.B.M. 7N  
 143. E.B.M. 7O  
 144. E.B.M. 7P  
 145. E.B.M. 7Q  
 146. E.B.M. 7R  
 147. E.B.M. 7S  
 148. E.B.M. 7T  
 149. E.B.M. 7U  
 150. E.B.M. 7V  
 151. E.B.M. 7W  
 152. E.B.M. 7X  
 153. E.B.M. 7Y  
 154. E.B.M. 7Z  
 155. E.B.M. 8A  
 156. E.B.M. 8B  
 157. E.B.M. 8C  
 158. E.B.M. 8D  
 159. E.B.M. 8E  
 160. E.B.M. 8F  
 161. E.B.M. 8G  
 162. E.B.M. 8H  
 163. E.B.M. 8I  
 164. E.B.M. 8J  
 165. E.B.M. 8K  
 166. E.B.M. 8L  
 167. E.B.M. 8M  
 168. E.B.M. 8N  
 169. E.B.M. 8O  
 170. E.B.M. 8P  
 171. E.B.M. 8Q  
 172. E.B.M. 8R  
 173. E.B.M. 8S  
 174. E.B.M. 8T  
 175. E.B.M. 8U  
 176. E.B.M. 8V  
 177. E.B.M. 8W  
 178. E.B.M. 8X  
 179. E.B.M. 8Y  
 180. E.B.M. 8Z  
 181. E.B.M. 9A  
 182. E.B.M. 9B  
 183. E.B.M. 9C  
 184. E.B.M. 9D  
 185. E.B.M. 9E  
 186. E.B.M. 9F  
 187. E.B.M. 9G  
 188. E.B.M. 9H  
 189. E.B.M. 9I  
 190. E.B.M. 9J  
 191. E.B.M. 9K  
 192. E.B.M. 9L  
 193. E.B.M. 9M  
 194. E.B.M. 9N  
 195. E.B.M. 9O  
 196. E.B.M. 9P  
 197. E.B.M. 9Q  
 198. E.B.M. 9R  
 199. E.B.M. 9S  
 200. E.B.M. 9T  
 201. E.B.M. 9U  
 202. E.B.M. 9V  
 203. E.B.M. 9W  
 204. E.B.M. 9X  
 205. E.B.M. 9Y  
 206. E.B.M. 9Z  
 207. E.B.M. 10A  
 208. E.B.M. 10B  
 209. E.B.M. 10C  
 210. E.B.M. 10D  
 211. E.B.M. 10E  
 212. E.B.M. 10F  
 213. E.B.M. 10G  
 214. E.B.M. 10H  
 215. E.B.M. 10I  
 216. E.B.M. 10J  
 217. E.B.M. 10K  
 218. E.B.M. 10L  
 219. E.B.M. 10M  
 220. E.B.M. 10N  
 221. E.B.M. 10O  
 222. E.B.M. 10P  
 223. E.B.M. 10Q  
 224. E.B.M. 10R  
 225. E.B.M. 10S  
 226. E.B.M. 10T  
 227. E.B.M. 10U  
 228. E.B.M. 10V  
 229. E.B.M. 10W  
 230. E.B.M. 10X  
 231. E.B.M. 10Y  
 232. E.B.M. 10Z  
 233. E.B.M. 11A  
 234. E.B.M. 11B  
 235. E.B.M. 11C  
 236. E.B.M. 11D  
 237. E.B.M. 11E  
 238. E.B.M. 11F  
 239. E.B.M. 11G  
 240. E.B.M. 11H  
 241. E.B.M. 11I  
 242. E.B.M. 11J  
 243. E.B.M. 11K  
 244. E.B.M. 11L  
 245. E.B.M. 11M  
 246. E.B.M. 11N  
 247. E.B.M. 11O  
 248. E.B.M. 11P  
 249. E.B.M. 11Q  
 250. E.B.M. 11R  
 251. E.B.M. 11S  
 252. E.B.M. 11T  
 253. E.B.M. 11U  
 254. E.B.M. 11V  
 255. E.B.M. 11W  
 256. E.B.M. 11X  
 257. E.B.M. 11Y  
 258. E.B.M. 11Z  
 259. E.B.M. 12A  
 260. E.B.M. 12B  
 261. E.B.M. 12C  
 262. E.B.M. 12D  
 263. E.B.M. 12E  
 264. E.B.M. 12F  
 265. E.B.M. 12G  
 266. E.B.M. 12H  
 267. E.B.M. 12I  
 268. E.B.M. 12J  
 269. E.B.M. 12K  
 270. E.B.M. 12L  
 271. E.B.M. 12M  
 272. E.B.M. 12N  
 273. E.B.M. 12O  
 274. E.B.M. 12P  
 275. E.B.M. 12Q  
 276. E.B.M. 12R  
 277. E.B.M. 12S  
 278. E.B.M. 12T  
 279. E.B.M. 12U  
 280. E.B.M. 12V  
 281. E.B.M. 12W  
 282. E.B.M. 12X  
 283. E.B.M. 12Y  
 284. E.B.M. 12Z  
 285. E.B.M. 13A  
 286. E.B.M. 13B  
 287. E.B.M. 13C  
 288. E.B.M. 13D  
 289. E.B.M. 13E  
 290. E.B.M. 13F  
 291. E.B.M. 13G  
 292. E.B.M. 13H  
 293. E.B.M. 13I  
 294. E.B.M. 13J  
 295. E.B.M. 13K  
 296. E.B.M. 13L  
 297. E.B.M. 13M  
 298. E.B.M. 13N  
 299. E.B.M. 13O  
 300. E.B.M. 13P  
 301. E.B.M. 13Q  
 302. E.B.M. 13R  
 303. E.B.M. 13S  
 304. E.B.M. 13T  
 305. E.B.M. 13U  
 306. E.B.M. 13V  
 307. E.B.M. 13W  
 308. E.B.M. 13X  
 309. E.B.M. 13Y  
 310. E.B.M. 13Z  
 311. E.B.M. 14A  
 312. E.B.M. 14B  
 313. E.B.M. 14C  
 314. E.B.M. 14D  
 315. E.B.M. 14E  
 316. E.B.M. 14F  
 317. E.B.M. 14G  
 318. E.B.M. 14H  
 319. E.B.M. 14I  
 320. E.B.M. 14J  
 321. E.B.M. 14K  
 322. E.B.M. 14L  
 323. E.B.M. 14M  
 324. E.B.M. 14N  
 325. E.B.M. 14O  
 326. E.B.M. 14P  
 327. E.B.M. 14Q  
 328. E.B.M. 14R  
 329. E.B.M. 14S  
 330. E.B.M. 14T  
 331. E.B.M. 14U  
 332. E.B.M. 14V  
 333. E.B.M. 14W  
 334. E.B.M. 14X  
 335. E.B.M. 14Y  
 336. E.B.M. 14Z  
 337. E.B.M. 15A  
 338. E.B.M. 15B  
 339. E.B.M. 15C  
 340. E.B.M. 15D  
 341. E.B.M. 15E  
 342. E.B.M. 15F  
 343. E.B.M. 15G  
 344. E.B.M. 15H  
 345. E.B.M. 15I  
 346. E.B.M. 15J  
 347. E.B.M. 15K  
 348. E.B.M. 15L  
 349. E.B.M. 15M  
 350. E.B.M. 15N  
 351. E.B.M. 15O  
 352. E.B.M. 15P  
 353. E.B.M. 15Q  
 354. E.B.M. 15R  
 355. E.B.M. 15S  
 356. E.B.M. 15T  
 357. E.B.M. 15U  
 358. E.B.M. 15V  
 359. E.B.M. 15W  
 360. E.B.M. 15X  
 361. E.B.M. 15Y  
 362. E.B.M. 15Z  
 363. E.B.M. 16A  
 364. E.B.M. 16B  
 365. E.B.M. 16C  
 366. E.B.M. 16D  
 367. E.B.M. 16E  
 368. E.B.M. 16F  
 369. E.B.M. 16G  
 370. E.B.M. 16H  
 371. E.B.M. 16I  
 372. E.B.M. 16J  
 373. E.B.M. 16K  
 374. E.B.M. 16L  
 375. E.B.M. 16M  
 376. E.B.M. 16N  
 377. E.B.M. 16O  
 378. E.B.M. 16P  
 379. E.B.M. 16Q  
 380. E.B.M. 16R  
 381. E.B.M. 16S  
 382. E.B.M. 16T  
 383. E.B.M. 16U  
 384. E.B.M. 16V  
 385. E.B.M. 16W  
 386. E.B.M. 16X  
 387. E.B.M. 16Y  
 388. E.B.M. 16Z  
 389. E.B.M. 17A  
 390. E.B.M. 17B  
 391. E.B.M. 17C  
 392. E.B.M. 17D  
 393. E.B.M. 17E  
 394. E.B.M. 17F  
 395. E.B.M. 17G  
 396. E.B.M. 17H  
 397. E.B.M. 17I  
 398. E.B.M. 17J  
 399. E.B.M. 17K  
 400. E.B.M. 17L  
 401. E.B.M. 17M  
 402. E.B.M. 17N  
 403. E.B.M. 17O  
 404. E.B.M. 17P  
 405. E.B.M. 17Q  
 406. E.B.M. 17R  
 407. E.B.M. 17S  
 408. E.B.M. 17T  
 409. E.B.M. 17U  
 410. E.B.M. 17V  
 411. E.B.M. 17W  
 412. E.B.M. 17X  
 413. E.B.M. 17Y  
 414. E.B.M. 17Z  
 415. E.B.M. 18A  
 416. E.B.M. 18B  
 417. E.B.M. 18C  
 418. E.B.M. 18D  
 419. E.B.M. 18E  
 420. E.B.M. 18F  
 421. E.B.M. 18G  
 422. E.B.M. 18H  
 423. E.B.M. 18I  
 424. E.B.M. 18J  
 425. E.B.M. 18K  
 426. E.B.M. 18L  
 427. E.B.M. 18M  
 428. E.B.M. 18N  
 429. E.B.M. 18O  
 430. E.B.M. 18P  
 431. E.B.M. 18Q  
 432. E.B.M. 18R  
 433. E.B.M. 18S  
 434. E.B.M. 18T  
 435. E.B.M. 18U  
 436. E.B.M. 18V  
 437. E.B.M. 18W  
 438. E.B.M. 18X  
 439. E.B.M. 18Y  
 440. E.B.M. 18Z  
 441. E.B.M. 19A  
 442. E.B.M. 19B  
 443. E.B.M. 19C  
 444. E.B.M. 19D  
 445. E.B.M. 19E  
 446. E.B.M. 19F  
 447. E.B.M. 19G  
 448. E.B.M. 19H  
 449. E.B.M. 19I  
 450. E.B.M. 19J  
 451. E.B.M. 19K  
 452. E.B.M. 19L  
 453. E.B.M. 19M  
 454. E.B.M. 19N  
 455. E.B.M. 19O  
 456. E.B.M. 19P  
 457. E.B.M. 19Q  
 458. E.B.M. 19R  
 459. E.B.M. 19S  
 460. E.B.M. 19T  
 461. E.B.M. 19U  
 462. E.B.M. 19V  
 463. E.B.M. 19W  
 464. E.B.M. 19X  
 465. E.B.M. 19Y  
 466. E.B.M. 19Z  
 467. E.B.M. 20A  
 468. E.B.M. 20B  
 469. E.B.M. 20C  
 470. E.B.M. 20D  
 471. E.B.M. 20E  
 472. E.B.M. 20F  
 473. E.B.M. 20G  
 474. E.B.M. 20H  
 475. E.B.M. 20I  
 476. E.B.M. 20J  
 477. E.B.M. 20K  
 478. E.B.M. 20L  
 479. E.B.M. 20M  
 480. E.B.M. 20N  
 481. E.B.M. 20O  
 482. E.B.M. 20P  
 483. E.B.M. 20Q  
 484. E.B.M. 20R  
 485. E.B.M. 20S  
 486. E.B.M. 20T  
 487. E.B.M. 20U  
 488. E.B.M. 20V  
 489. E.B.M. 20W  
 490. E.B.M. 20X  
 491. E.B.M. 20Y  
 492. E.B.M. 20Z  
 493. E.B.M. 21A  
 494. E.B.M. 21B  
 495. E.B.M. 21C  
 496. E.B.M. 21D  
 497. E.B.M. 21E  
 498. E.B.M. 21F  
 499. E.B.M. 21G  
 500. E.B.M. 21H  
 501. E.B.M. 21I  
 502. E.B.M. 21J  
 503. E.B.M. 21K  
 504. E.B.M. 21L  
 505. E.B.M. 21M  
 506. E.B.M. 21N  
 507. E.B.M. 21O  
 508. E.B.M. 21P  
 509. E.B.M. 21Q  
 510. E.B.M. 21R  
 511. E.B.M. 21S  
 512. E.B.M. 21T  
 513. E.B.M. 21U  
 514. E.B.M. 21V  
 515. E.B.M. 21W  
 516. E.B.M. 21X  
 517. E.B.M. 21Y  
 518. E.B.M. 21Z  
 519. E.B.M. 22A  
 520. E.B.M. 22B  
 521. E.B.M. 22C  
 522. E.B.M. 22D  
 523. E.B.M. 22E  
 524. E.B.M. 22F  
 525. E.B.M. 22G  
 526. E.B.M. 22H  
 527. E.B.M. 22I  
 528. E.B.M. 22J  
 529. E.B.M. 22K  
 530. E.B.M. 22L  
 531. E.B.M. 22M  
 532. E.B.M. 22N  
 533. E.B.M. 22O  
 534. E.B.M. 22P  
 535. E.B.M. 22Q  
 536. E.B.M. 22R  
 537. E.B.M. 22S  
 538. E.B.M. 22T  
 539. E.B.M. 22U  
 540. E.B.M. 22V  
 541. E.B.M. 22W  
 542. E.B.M. 22X  
 543. E.B.M. 22Y  
 544. E.B.M. 22Z  
 545. E.B.M. 23A  
 546. E.B.M. 23B  
 547. E.B.M. 23C  
 548. E.B.M. 23D  
 549. E.B.M. 23E  
 550. E.B.M. 23F  
 551. E.B.M. 23G  
 552. E.B.M. 23H  
 553. E.B.M. 23I  
 554. E.B.M. 23J  
 555. E.B.M. 23K  
 556. E.B.M. 23L  
 557. E.B.M. 23M  
 558. E.B.M. 23N  
 559. E.B.M. 23O  
 560. E.B.M. 23P  
 561. E.B.M. 23Q  
 562. E.B.M. 23R  
 563. E.B.M. 23S  
 564. E.B.M. 23T  
 565. E.B.M. 23U  
 566. E.B.M. 23V  
 567. E.B.M. 23W  
 568. E.B.M. 23X  
 569. E.B.M. 23Y  
 570. E.B.M. 23Z  
 571. E.B.M. 24A  
 572. E.B.M. 24B  
 573. E.B.M. 24C  
 574. E.B.M. 24D  
 575. E.B.M. 24E  
 576. E.B.M. 24F  
 577. E.B.M. 24G  
 578. E.B.M. 24H  
 579. E.B.M. 24I  
 580. E.B.M. 24J  
 581. E.B.M. 24K  
 582. E.B.M. 24L  
 583. E.B.M. 24M  
 584. E.B.M. 24N  
 585. E.B.M. 24O  
 586. E.B.M. 24P  
 587. E.B.M. 24Q  
 588. E.B.M. 24R  
 589. E.B.M. 24S  
 590. E.B.M. 24T  
 591. E.B.M. 24U  
 592. E.B.M. 24V  
 593. E.B.M. 24W  
 594. E.B.M. 24X  
 595. E.B.M. 24Y  
 596. E.B.M. 24Z  
 597. E.B.M. 25A  
 598. E.B.M. 25B  
 599. E.B.M. 25C  
 600. E.B.M. 25D  
 601. E.B.M. 25E  
 602. E.B.M. 25F  
 603. E.B.M. 25G  
 604. E.B.M. 25H  
 605. E.B.M. 25I  
 606. E.B.M. 25J  
 607. E.B.M. 25K  
 608. E.B.M. 25L  
 609. E.B.M. 25M  
 610. E.B.M. 25N  
 611. E.B.M. 25O  
 612. E.B.M. 25P  
 613. E.B.M. 25Q  
 614. E.B.M. 25R  
 615. E.B.M. 25S  
 616. E.B.M. 25T  
 617. E.B.M. 25U  
 618. E.B.M. 25V  
 619. E.B.M. 25W  
 620. E.B.M. 25X  
 621. E.B.M. 25Y  
 622. E.B.M. 25Z  
 623. E.B.M. 26A  
 624. E.B.M. 26B  
 625. E.B.M. 26C  
 626. E.B.M. 26D  
 627. E.B.M. 26E  
 628. E.B.M. 26F  
 629. E.B.M. 26G  
 630. E.B.M. 26H  
 631. E.B.M. 26I  
 632. E.B.M. 26J  
 633. E.B.M. 26K  
 634. E.B.M. 26L  
 635. E.B.M. 26M  
 636. E.B.M. 26N  
 637. E.B.M. 26O  
 638. E.B.M. 26P  
 639. E.B.M. 26Q  
 640. E.B.M. 26R  
 641. E.B.M. 26S  
 642. E.B.M. 26T  
 643. E.B.M. 26U  
 644. E.B.M. 26V  
 645. E.B.M. 26W  
 646. E.B.M. 26X  
 647. E.B.M. 26Y  
 648. E.B.M. 26Z  
 649. E.B.M. 27A  
 650. E.B.M. 27B  
 651. E.B.M. 27C  
 652. E.B.M. 27D  
 653. E.B.M. 27E  
 654. E.B.M. 27F  
 655. E.B.M. 27G  
 656. E.B.M. 27H  
 657. E.B.M. 27I  
 658. E.B.M. 27J  
 659. E.B.M. 27K  
 660. E.B.M. 27L  
 661. E.B.M. 27M  
 662. E.B.M. 27N  
 663. E.B.M. 27O  
 664. E.B.M. 27P  
 665. E.B.M. 27Q  
 666. E.B.M. 27R  
 667. E.B.M. 27S  
 668. E.B.M. 27T  
 669. E.B.M. 27U  
 670. E.B.M. 27V  
 671. E.B.M. 27W  
 672. E.B.M. 27X  
 673. E.B.M. 27Y  
 674. E.B.M. 27Z  
 675. E.B.M. 28A  
 676. E.B.M. 28B  
 677. E.B.M. 28C  
 678. E.B.M. 28D  
 679. E.B.M. 28E  
 680. E.B.M. 28F  
 681. E.B.M. 28G  
 682. E.B.M. 28H  
 683. E.B.M. 28I  
 684. E.B.M. 28J  
 685. E.B.M. 28K  
 686. E.B.M. 28L  
 687. E.B.M. 28M  
 688. E.B.M. 28N  
 689. E.B.M. 28O  
 690. E.B.M. 28P  
 691. E.B.M. 28Q  
 692. E.B.M. 28R  
 693. E.B.M. 28S  
 694. E.B.M. 28T  
 695. E.B.M. 28U  
 696. E.B.M. 28V  
 697. E.B.M. 28W  
 698. E.B.M. 28X  
 699. E.B.M. 28Y  
 700. E.B.M. 28Z  
 701. E.B.M. 29A  
 702. E.B.M. 29B  
 703. E.B.M. 29C  
 704. E.B.M. 29D  
 705. E.B.M. 29E  
 706. E.B.M. 29F  
 707. E.B.M. 29G  
 708. E.B.M. 29H  
 709. E.B.M. 29I  
 710. E.B.M. 29J  
 711. E.B.M. 29K  
 712. E.B.M. 29L  
 713. E.B.M. 29M  
 714. E.B.M. 29N  
 715. E.B.M. 29O  
 716. E.B.M. 29P  
 717. E.B.M. 29Q  
 718. E.B.M. 29R  
 719. E.B.M. 29S  
 720. E.B.M. 29T  
 721. E.B.M. 29U  
 722. E.B.M. 29V  
 723. E.B.M. 29W  
 724. E.B.M. 29X  
 725. E.B.M. 29Y  
 726. E.B.M. 29Z  
 727. E.B.M. 30A  
 728. E.B.M. 30B  
 729. E.B.M. 30C  
 730. E.B.M. 30D  
 731. E.B.M. 30E  
 732. E.B.M. 30F  
 733. E.B.M. 30G  
 734. E.B.M. 30H  
 735. E.B.M. 30I  
 736. E.B.M. 30J  
 737. E.B.M. 30K



**REVISIONS**

NSR Measurement No. 1094, Bears Crap in Top of NW End of the NE 1/4 of Section 5, T13S, R14E, S10E, 1/4 Mile SW of Jones Bluff and 1.45 Miles NE of Richmond Chart House.  
Elevation = 62.88' (NAVD 83)

**TEAM 1C**  
OWNER: THE STATE OF TEXAS  
COUNTY: TARRANT COUNTY  
PROJECT: THE STATE OF TEXAS  
DRAWING: 10-1000

**TEAM 2C**  
DESIGNER: J. R. BROWN  
DATE: 10/15/14

**TEAM 3C**  
CONTRACTOR: J. R. BROWN  
DATE: 10/15/14

**NOTE:**  
THESE PLANS ARE FOR THE CONSTRUCTION OF THE PROJECT AND ARE NOT TO BE USED FOR ANY OTHER PURPOSE. THE CONTRACTOR SHALL BE RESPONSIBLE FOR OBTAINING ALL NECESSARY PERMITS AND APPROVALS FROM THE APPROPRIATE AGENCIES AND AGENCIES. THE CONTRACTOR SHALL BE RESPONSIBLE FOR OBTAINING ALL NECESSARY PERMITS AND APPROVALS FROM THE APPROPRIATE AGENCIES AND AGENCIES. THE CONTRACTOR SHALL BE RESPONSIBLE FOR OBTAINING ALL NECESSARY PERMITS AND APPROVALS FROM THE APPROPRIATE AGENCIES AND AGENCIES.

APPROVED: *[Signature]*  
DATE: 12/2/14



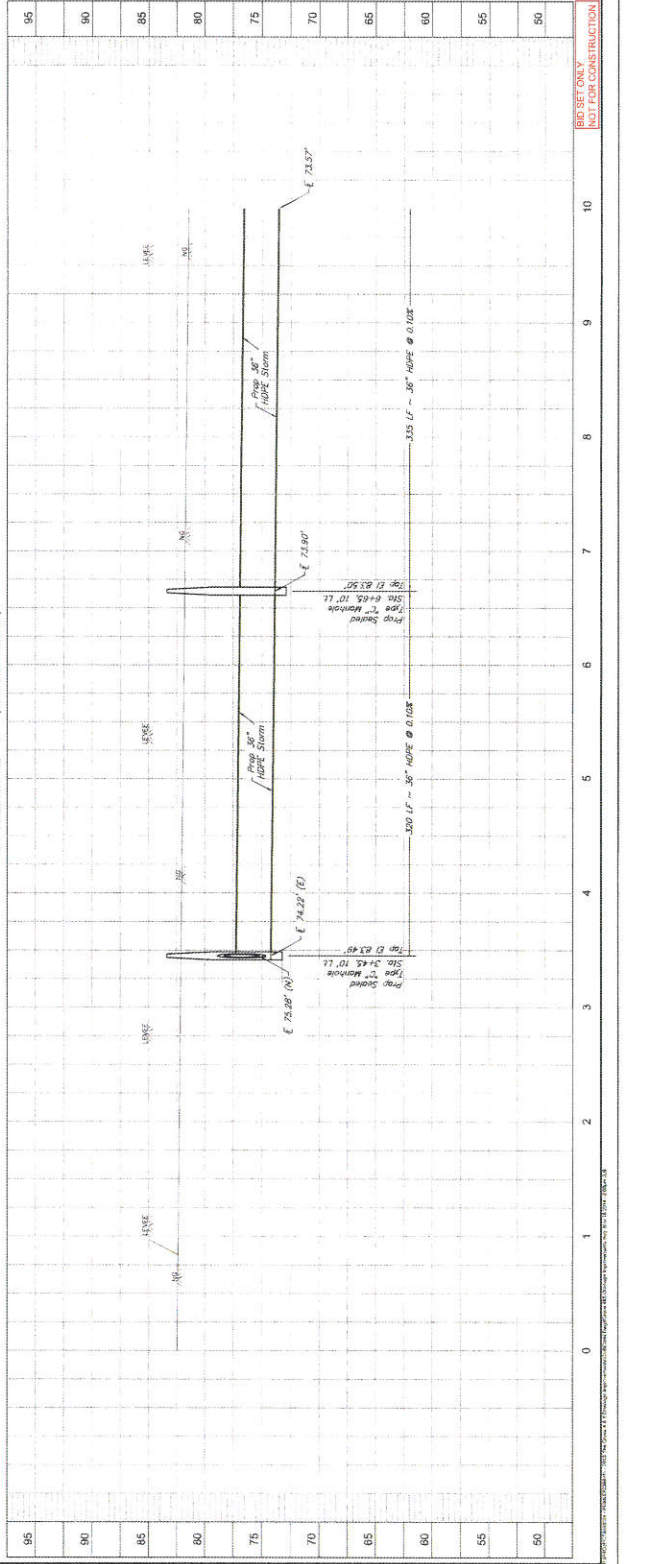
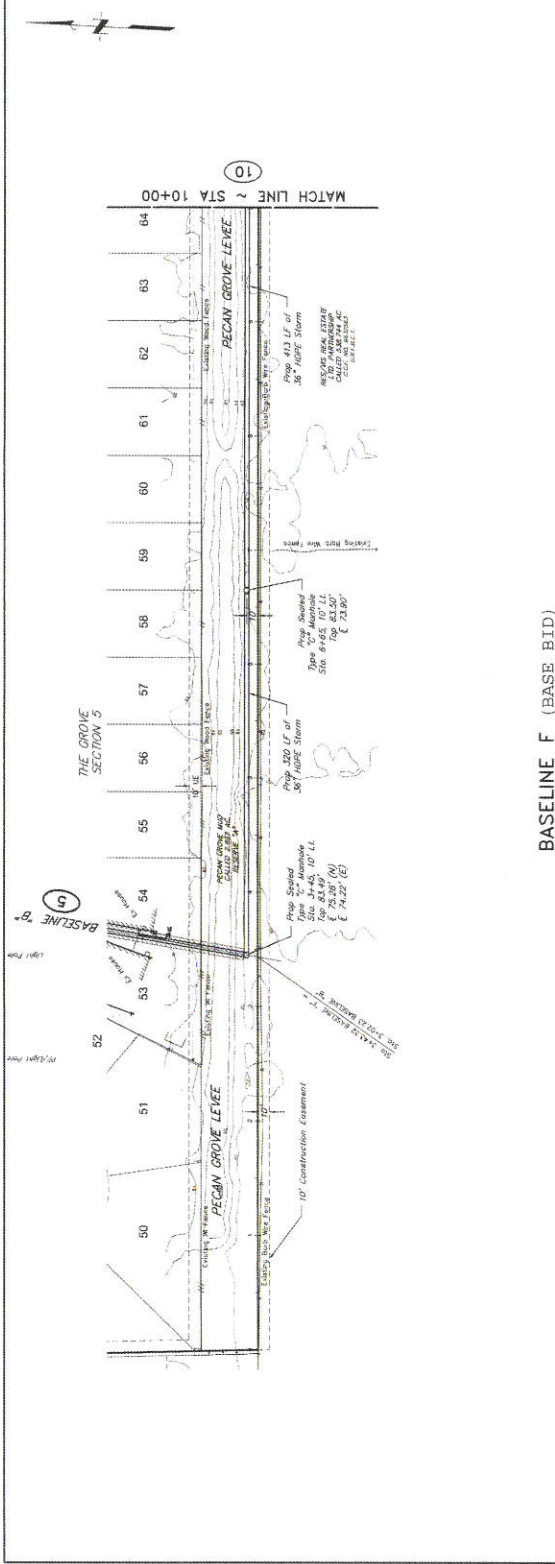
PRIVATE UTILITY LINES SHOWN  
AS EXISTING ARE NOT TO BE CONSIDERED AS GUARANTEED.

NO.	DATE	REVISIONS
1		
2		
3		
4		
5		
6		
7		
8		
9		
10		

THE GROVE 4 & 5  
DRAINAGE IMPROVEMENTS  
PLAN & PROFILE  
BASELINE F  
STA 0+00 - 10+00

J. R. BROWN ENGINEERS, P.C.  
1415 North Loop West, Suite 1000  
Houston, Texas 77001 (713) 865-2211

DATE: NOVEMBER 2014  
JOB NO.: 10000-1000-01  
DRAWN BY: JRB  
CHECKED BY: JRB  
SCALE: 1" = 40' (PLAN)  
1" = 10' (PROFILE)



810 SET ONLY  
NOT FOR CONSTRUCTION

BASELINE F (BASE BID)



**BENCHMARKS**  
 1005 Monument No. 1804, Block City 11, The ANNEC of  
 the NE Avenue of a Corporate Ridge Under Eastbound  
 and 1/4 Mile NE of Belmont Court of F.R. 200  
 Elevation = 82.85' (NAVD 83)

**ITEM 11**  
 2.00' TO 4.00' DEPTH OF INTERSECTION OF MAIN STREET  
 COURSE AND THROUGH STREETS TO 4' OF MAINLINE  
 ELEVATION = 82.85' (NAVD 83)

**ITEM 12**  
 2.00' TO 4.00' DEPTH OF INTERSECTION OF WYOMING  
 COURSE AND THROUGH STREETS TO 4' OF MAINLINE  
 ELEVATION = 82.85' (NAVD 83)

**ITEM 13**  
 2.00' TO 4.00' DEPTH OF INTERSECTION OF WYOMING  
 COURSE AND THROUGH STREETS TO 4' OF MAINLINE  
 ELEVATION = 82.85' (NAVD 83)

**ITEM 14**  
 2.00' TO 4.00' DEPTH OF INTERSECTION OF WYOMING  
 COURSE AND THROUGH STREETS TO 4' OF MAINLINE  
 ELEVATION = 82.85' (NAVD 83)

**NOTE**  
 ALL CONSTRUCTION SHALL BE IN ACCORDANCE WITH THE  
 LATEST EDITIONS OF THE STANDARD SPECIFICATIONS FOR  
 CONSTRUCTION OF PUBLIC WORKS AS APPLICABLE TO  
 THE STATE OF TEXAS. THE CONTRACTOR SHALL BE  
 RESPONSIBLE FOR OBTAINING ALL NECESSARY PERMITS  
 FROM THE APPROPRIATE AGENCIES AND FOR THE  
 PROTECTION OF ALL UTILITIES AND STRUCTURES  
 ENCOUNTERED.

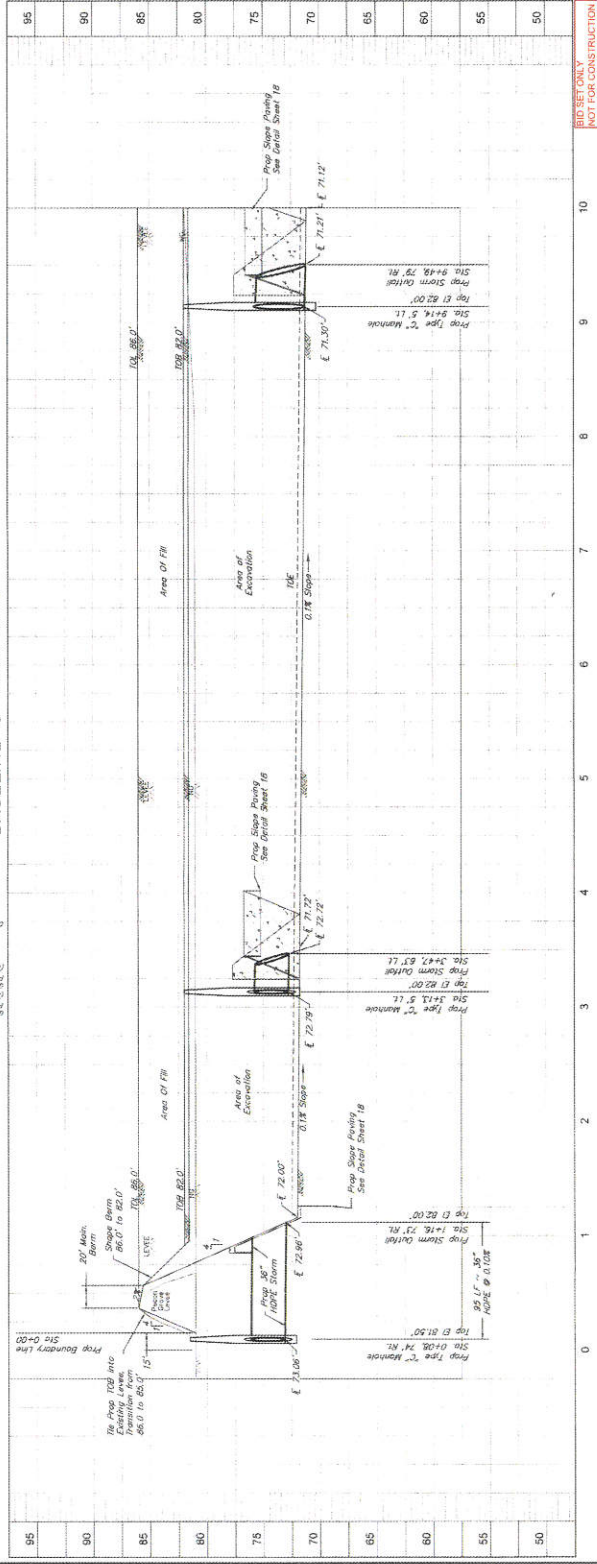
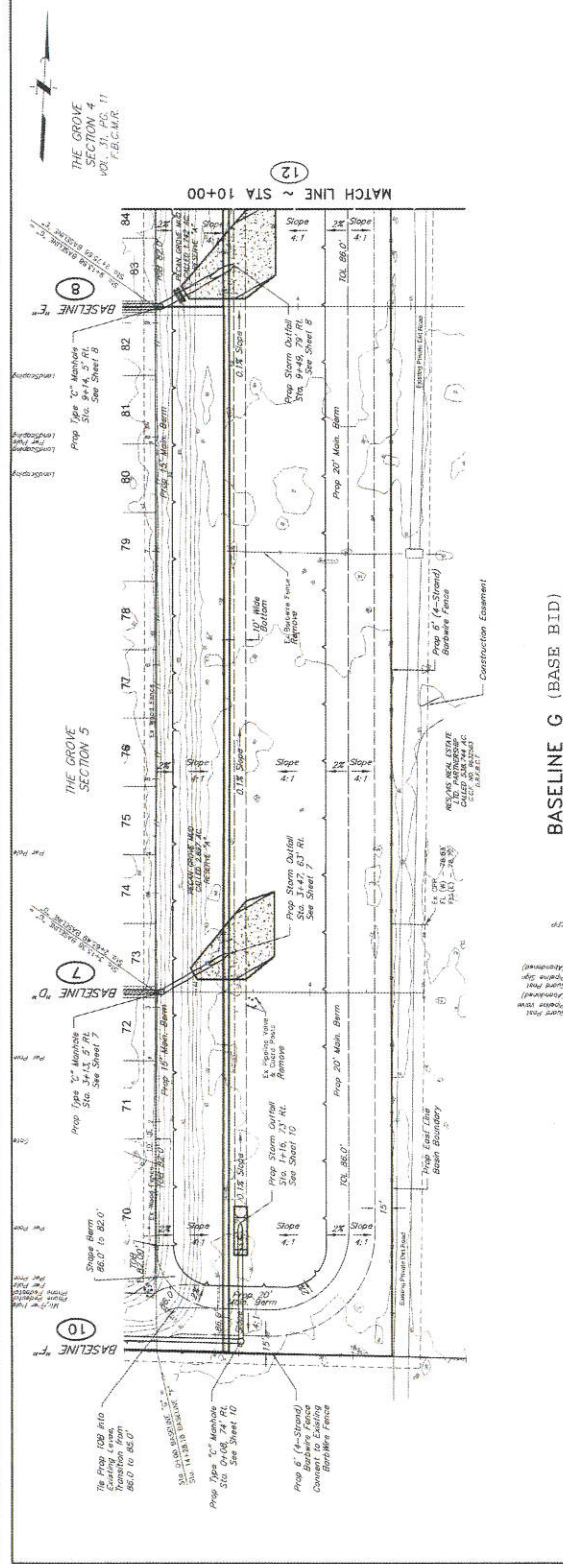
APPROVED: *[Signature]*  
 DATE: 12/2/18  
 DEVELOPMENT ENGINEER

**PRIVATE UTILITY LINES SHOWN**  
 ARE BASED ON THE INFORMATION PROVIDED BY THE  
 OWNER AND THE CONTRACTOR. THE CONTRACTOR  
 SHALL VERIFY THE LOCATION AND DEPTH OF ALL  
 UTILITIES PRIOR TO CONSTRUCTION. THE  
 CONTRACTOR SHALL BE RESPONSIBLE FOR THE  
 PROTECTION OF ALL UTILITIES AND STRUCTURES  
 ENCOUNTERED.

THE GROVE & S  
 DRAINAGE IMPROVEMENTS  
 PLAN & PROFILE  
 BASELINE G  
 STA 0+00 - 10+00

J.C. JONES & CARTER, INC.  
 1000 West 10th Street, Suite 1000  
 Fort Worth, Texas 76102-3800  
 PHONE: 817.335.1111  
 FAX: 817.335.1112  
 WWW: www.jcjones.com

SCALE: 1" = 40'  
 SHEET NO. 11  
 OF 11



NOT FOR CONSTRUCTION





**BENCHMARK**  
 THE GROVE SECTION 3  
 VOL. 24, P.C. 10  
 I.B.C.M.P.

**BENCHMARK**  
 THE GROVE SECTION 9  
 VOL. 24, P.C. 10  
 I.B.C.M.P.

**TABLE 1**  
 ELEVATION OF THE INTERSECTION OF MAINLINE  
 COURT AND IMPROVEMENT DRIVE, P.N. OF BENTLEY  
 ELEVATION: 62.88' (NAND 88)

**TABLE 2**  
 ELEVATION OF THE INTERSECTION OF MAINLINE  
 COURT AND IMPROVEMENT DRIVE, P.N. OF BENTLEY  
 ELEVATION: 62.88' (NAND 88)

**TABLE 3**  
 ELEVATION OF THE INTERSECTION OF IMPROVED  
 DRIVE AND IMPROVEMENT DRIVE  
 ELEVATION: 72.24' (NAND 78)

**NOTE:**  
 CONTRACTOR SHALL USE CAUTION WHEN EXCAVATING IN  
 UTILITY AREAS. ALL UTILITIES SHALL BE PROTECTED AND  
 REPAIRED AT THE CONTRACTOR'S EXPENSE. THE  
 CONTRACTOR SHALL MAINTAIN ACCESS TO ALL ADJACENT  
 PROPERTIES AT ALL TIMES.

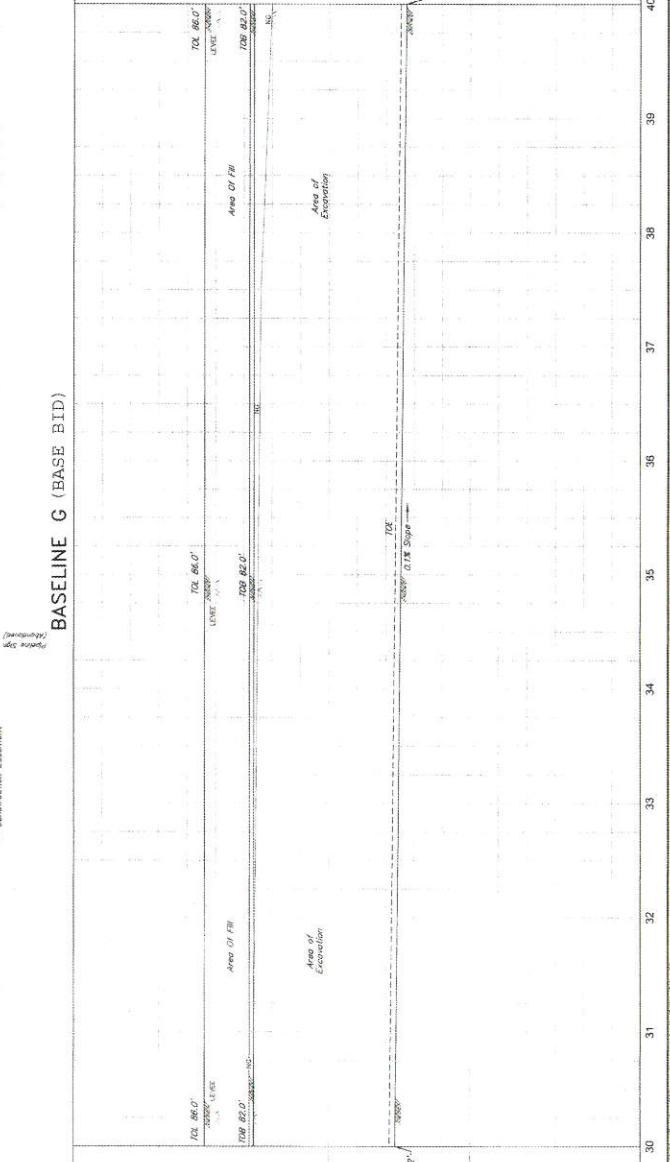
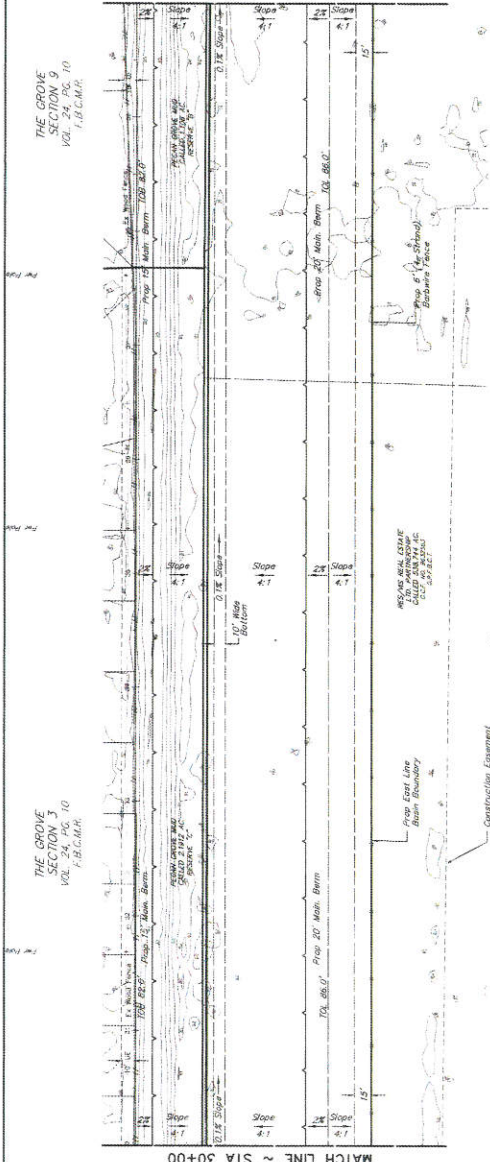
APPROVED: *[Signature]*  
 DATE: 12/14/14

SCALE: 1" = 50'  
 PRIVATE UTILITY LINES SHOWN  
 FOR INFORMATION ONLY. CONTRACTOR SHALL VERIFY  
 LOCATION AND DEPTH OF ALL UTILITIES PRIOR TO  
 CONSTRUCTION.

THE GROVE SECTION 3 & 9  
 DRAINAGE IMPROVEMENTS  
 PLAN & PROFILE  
 BASELINE G  
 STA 30+00 - 40+00

J.C. JONES & CARTER, INC.  
 PROFESSIONAL ENGINEERS-SURVEYORS  
 10000 WEST 10TH STREET, SUITE 100  
 FORT WORTH, TEXAS 76133

DATE: 12/14/14  
 DRAWN BY: EJP  
 CHECKED BY: JJJ  
 PROJECT NO.: 14-0000



PECAN GROVE MUNICIPAL UTILITY DISTRICT  
 FORT BEND COUNTY, TEXAS

THE GROVE SECTION 3 & 9  
 DRAINAGE IMPROVEMENTS  
 PLAN & PROFILE  
 BASELINE G  
 STA 30+00 - 40+00

J.C. JONES & CARTER, INC.  
 PROFESSIONAL ENGINEERS-SURVEYORS  
 10000 WEST 10TH STREET, SUITE 100  
 FORT WORTH, TEXAS 76133

DATE: 12/14/14  
 DRAWN BY: EJP  
 CHECKED BY: JJJ  
 PROJECT NO.: 14-0000

14  
 of 24

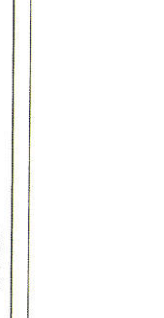
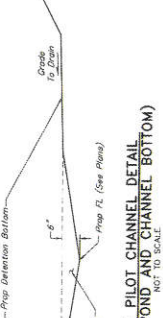
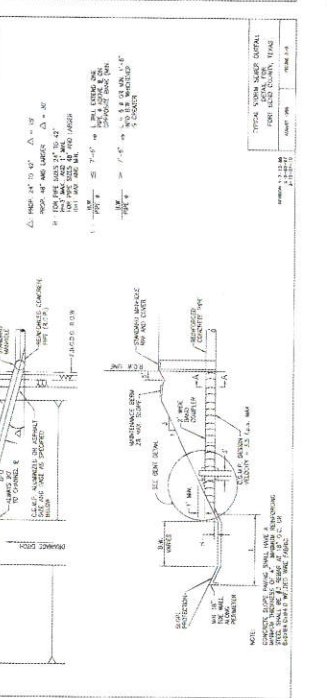
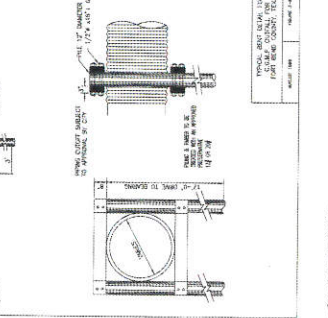
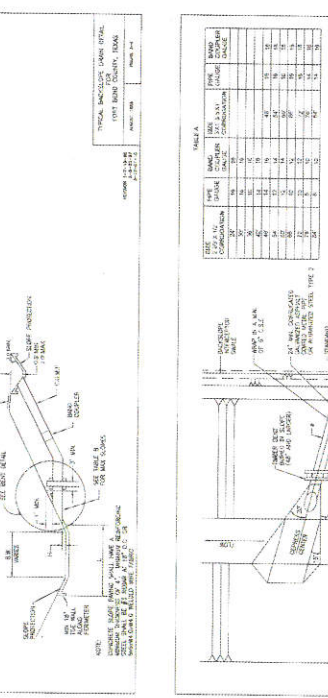
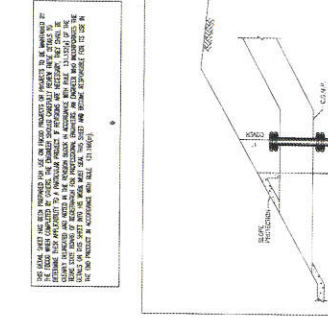
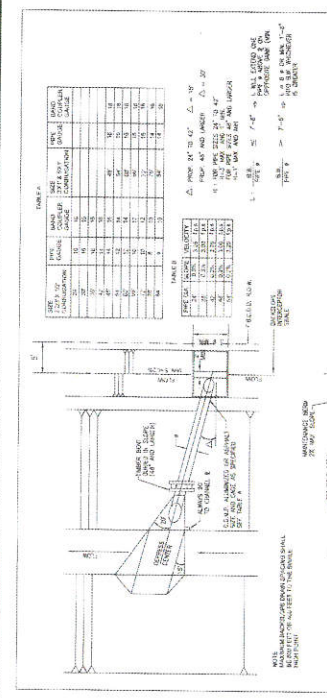
NOT FOR CONSTRUCTION







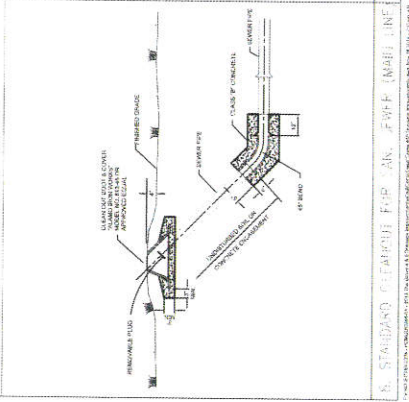
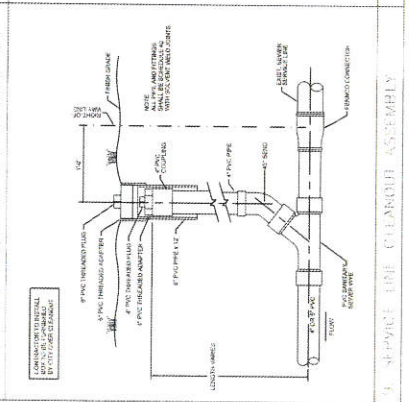
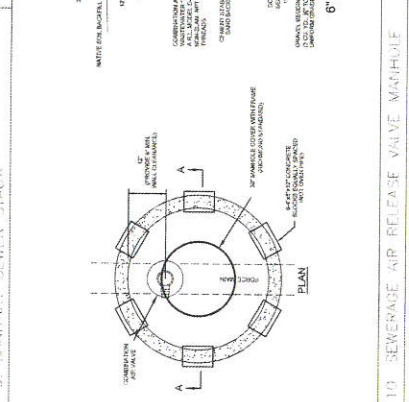
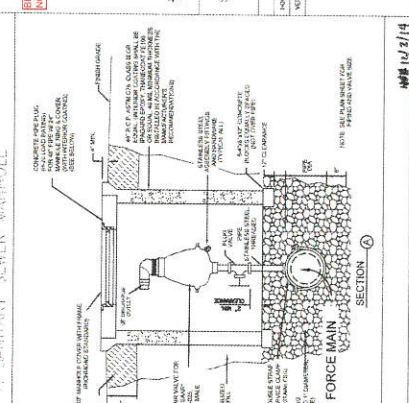
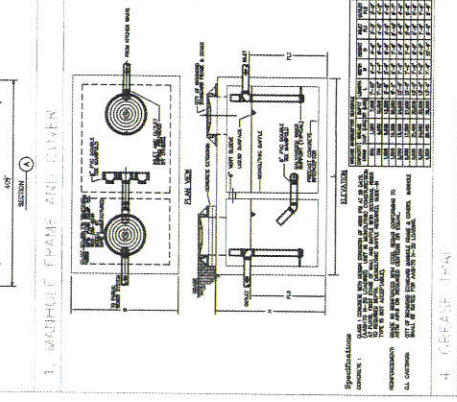
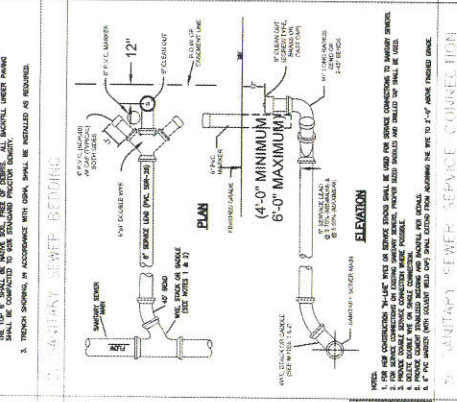
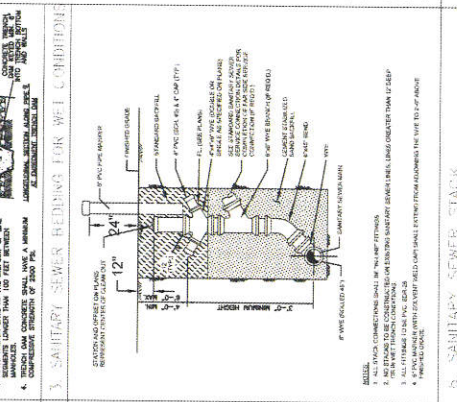
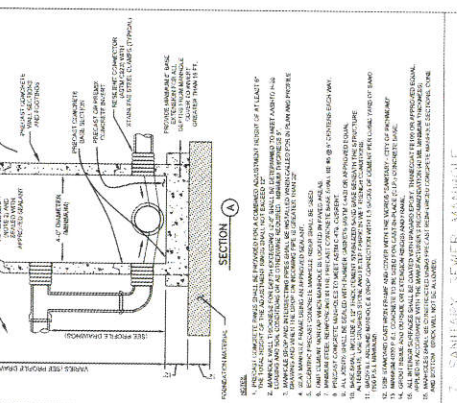
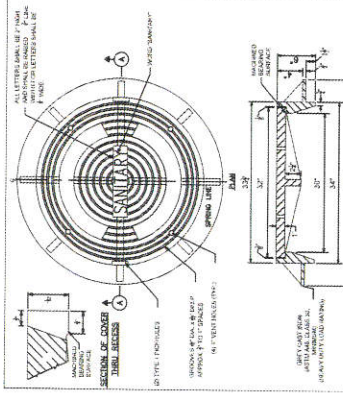
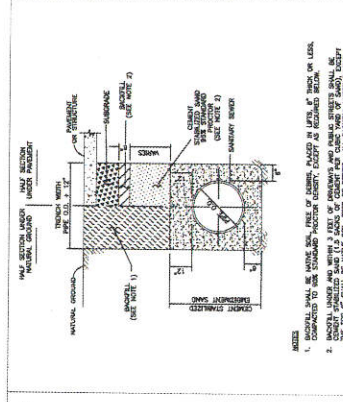
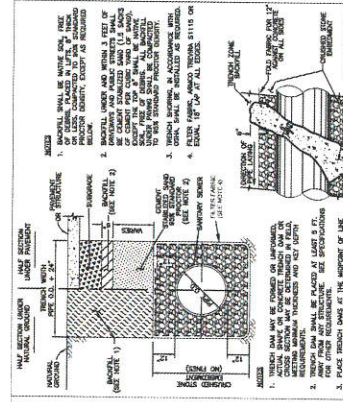
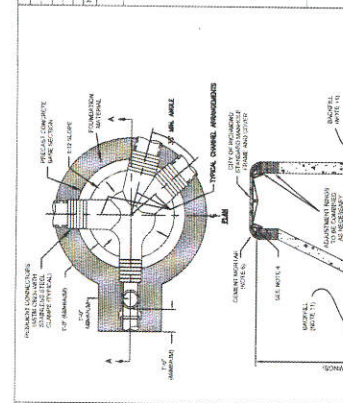
- GENERAL NOTES:**
1. ALL WORK SHALL BE ACCORDING TO THE SPECIFICATIONS AND TO THE DETAILS OF THE DRAWINGS.
  2. THE CONTRACTOR SHALL BE RESPONSIBLE FOR OBTAINING ALL NECESSARY PERMITS FROM THE LOCAL AUTHORITIES.
  3. THE CONTRACTOR SHALL BE RESPONSIBLE FOR OBTAINING ALL NECESSARY PERMITS FROM THE LOCAL AUTHORITIES.
  4. THE CONTRACTOR SHALL BE RESPONSIBLE FOR OBTAINING ALL NECESSARY PERMITS FROM THE LOCAL AUTHORITIES.
  5. THE CONTRACTOR SHALL BE RESPONSIBLE FOR OBTAINING ALL NECESSARY PERMITS FROM THE LOCAL AUTHORITIES.
  6. THE CONTRACTOR SHALL BE RESPONSIBLE FOR OBTAINING ALL NECESSARY PERMITS FROM THE LOCAL AUTHORITIES.
  7. THE CONTRACTOR SHALL BE RESPONSIBLE FOR OBTAINING ALL NECESSARY PERMITS FROM THE LOCAL AUTHORITIES.
  8. THE CONTRACTOR SHALL BE RESPONSIBLE FOR OBTAINING ALL NECESSARY PERMITS FROM THE LOCAL AUTHORITIES.
  9. THE CONTRACTOR SHALL BE RESPONSIBLE FOR OBTAINING ALL NECESSARY PERMITS FROM THE LOCAL AUTHORITIES.
  10. THE CONTRACTOR SHALL BE RESPONSIBLE FOR OBTAINING ALL NECESSARY PERMITS FROM THE LOCAL AUTHORITIES.
  11. THE CONTRACTOR SHALL BE RESPONSIBLE FOR OBTAINING ALL NECESSARY PERMITS FROM THE LOCAL AUTHORITIES.
  12. THE CONTRACTOR SHALL BE RESPONSIBLE FOR OBTAINING ALL NECESSARY PERMITS FROM THE LOCAL AUTHORITIES.
  13. THE CONTRACTOR SHALL BE RESPONSIBLE FOR OBTAINING ALL NECESSARY PERMITS FROM THE LOCAL AUTHORITIES.
  14. THE CONTRACTOR SHALL BE RESPONSIBLE FOR OBTAINING ALL NECESSARY PERMITS FROM THE LOCAL AUTHORITIES.
  15. THE CONTRACTOR SHALL BE RESPONSIBLE FOR OBTAINING ALL NECESSARY PERMITS FROM THE LOCAL AUTHORITIES.



**TABLE A**

PIPE SIZE (INCHES)	MINIMUM COVER (INCHES)	MINIMUM COVER (FEET)
12	18	1.5
15	24	2.0
18	30	2.5
21	36	3.0
24	42	3.5
27	48	4.0
30	54	4.5
36	66	5.5
42	78	6.5
48	90	7.5
54	102	8.5
60	114	9.5
66	126	10.5
72	138	11.5
78	150	12.5
84	162	13.5
90	174	14.5
96	186	15.5
102	198	16.5
108	210	17.5
114	222	18.5
120	234	19.5
126	246	20.5
132	258	21.5
138	270	22.5
144	282	23.5
150	294	24.5
156	306	25.5
162	318	26.5
168	330	27.5
174	342	28.5
180	354	29.5
186	366	30.5
192	378	31.5
198	390	32.5
204	402	33.5
210	414	34.5
216	426	35.5
222	438	36.5
228	450	37.5
234	462	38.5
240	474	39.5
246	486	40.5
252	498	41.5
258	510	42.5
264	522	43.5
270	534	44.5
276	546	45.5
282	558	46.5
288	570	47.5
294	582	48.5
300	594	49.5
306	606	50.5
312	618	51.5
318	630	52.5
324	642	53.5
330	654	54.5
336	666	55.5
342	678	56.5
348	690	57.5
354	702	58.5
360	714	59.5
366	726	60.5
372	738	61.5
378	750	62.5
384	762	63.5
390	774	64.5
396	786	65.5
402	798	66.5
408	810	67.5
414	822	68.5
420	834	69.5
426	846	70.5
432	858	71.5
438	870	72.5
444	882	73.5
450	894	74.5
456	906	75.5
462	918	76.5
468	930	77.5
474	942	78.5
480	954	79.5
486	966	80.5
492	978	81.5
498	990	82.5
504	1002	83.5
510	1014	84.5
516	1026	85.5
522	1038	86.5
528	1050	87.5
534	1062	88.5
540	1074	89.5
546	1086	90.5
552	1098	91.5
558	1110	92.5
564	1122	93.5
570	1134	94.5
576	1146	95.5
582	1158	96.5
588	1170	97.5
594	1182	98.5
600	1194	99.5
606	1206	100.5
612	1218	101.5
618	1230	102.5
624	1242	103.5
630	1254	104.5
636	1266	105.5
642	1278	106.5
648	1290	107.5
654	1302	108.5
660	1314	109.5
666	1326	110.5
672	1338	111.5
678	1350	112.5
684	1362	113.5
690	1374	114.5
696	1386	115.5
702	1398	116.5
708	1410	117.5
714	1422	118.5
720	1434	119.5
726	1446	120.5
732	1458	121.5
738	1470	122.5
744	1482	123.5
750	1494	124.5
756	1506	125.5
762	1518	126.5
768	1530	127.5
774	1542	128.5
780	1554	129.5
786	1566	130.5
792	1578	131.5
798	1590	132.5
804	1602	133.5
810	1614	134.5
816	1626	135.5
822	1638	136.5
828	1650	137.5
834	1662	138.5
840	1674	139.5
846	1686	140.5
852	1698	141.5
858	1710	142.5
864	1722	143.5
870	1734	144.5
876	1746	145.5
882	1758	146.5
888	1770	147.5
894	1782	148.5
900	1794	149.5
906	1806	150.5
912	1818	151.5
918	1830	152.5
924	1842	153.5
930	1854	154.5
936	1866	155.5
942	1878	156.5
948	1890	157.5
954	1902	158.5
960	1914	159.5
966	1926	160.5
972	1938	161.5
978	1950	162.5
984	1962	163.5
990	1974	164.5
996	1986	165.5
1002	1998	166.5
1008	2010	167.5
1014	2022	168.5
1020	2034	169.5
1026	2046	170.5
1032	2058	171.5
1038	2070	172.5
1044	2082	173.5
1050	2094	174.5
1056	2106	175.5
1062	2118	176.5
1068	2130	177.5
1074	2142	178.5
1080	2154	179.5
1086	2166	180.5
1092	2178	181.5
1098	2190	182.5
1104	2202	183.5
1110	2214	184.5
1116	2226	185.5
1122	2238	186.5
1128	2250	187.5
1134	2262	188.5
1140	2274	189.5
1146	2286	190.5
1152	2298	191.5
1158	2310	192.5
1164	2322	193.5
1170	2334	194.5
1176	2346	195.5
1182	2358	196.5
1188	2370	197.5
1194	2382	198.5
1200	2394	199.5
1206	2406	200.5
1212	2418	201.5
1218	2430	202.5
1224	2442	203.5
1230	2454	204.5
1236	2466	205.5
1242	2478	206.5
1248	2490	207.5
1254	2502	208.5
1260	2514	209.5
1266	2526	210.5
1272	2538	211.5
1278	2550	212.5
1284	2562	213.5
1290	2574	214.5
1296	2586	215.5
1302	2598	216.5
1308	2610	217.5
1314	2622	218.5
1320	2634	219.5
1326	2646	220.5
1332	2658	221.5
1338	2670	222.5
1344	2682	223.5
1350	2694	224.5
1356	2706	225.5
1362	2718	226.5
1368	2730	227.5
1374	2742	228.5
1380	2754	229.5
1386	2766	230.5
1392	2778	231.5
1398	2790	232.5
1404	2802	233.5
1410	2814	234.5
1416	2826	235.5
1422	2838	













APPROVED: *[Signature]*  
 DATE: 12/1/19

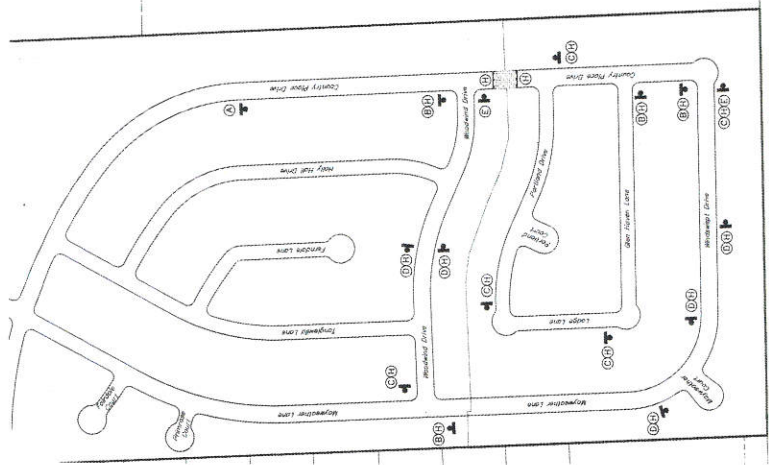
PRIVATE UTILITY LINES SHOWN  
 NUMBER CALLED FOR VERIFICATION: 325-2125

THE GROVE # 8 & S  
 DRAINAGE IMPROVEMENTS  
 TRAFFIC CONTROL PLAN

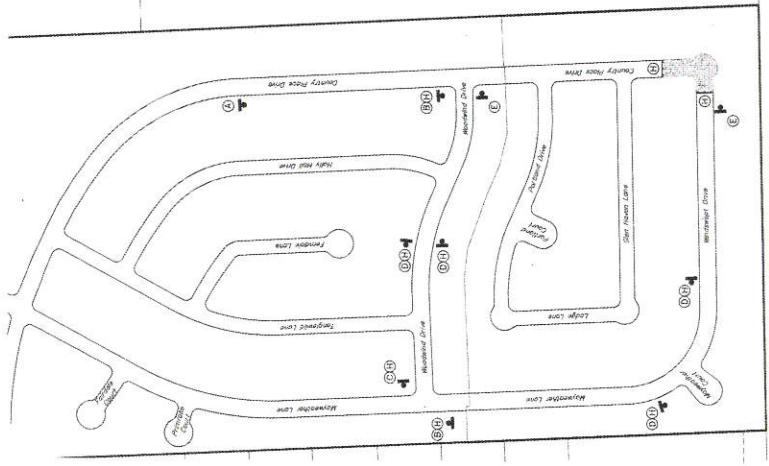
FECAN GROVE MUNICIPAL UTILITY DISTRICT  
 FORT BEND COUNTY, TEXAS

JONES & CARTER, INC.  
 10000 Katy Road, Suite 100  
 Houston, Texas 77058

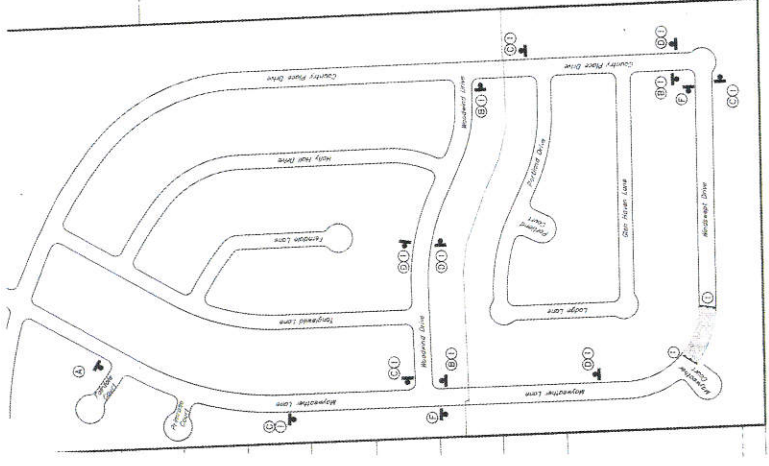
SCALE: 1" = 200'  
 DATE: 12/1/19  
 DRAWN BY: JAC  
 CHECKED BY: JAC  
 SUBMITTED: JAC



Traffic Control for Closure of Country Place Drive



Traffic Control for Closure of Mayweather Drive & Country Place Drive



Traffic Control for Closure of Mayweather Drive

**TRAFFIC CONTROL LEGEND**

- Construction Barricade
- Construction Detour
- Detour Arrow
- Detour Sign
- Construction Detour Signage

**TRAFFIC CONTROL CONSTRUCTION SEQUENCE**

(A) DETOUR AHEAD	(B) DETOUR	(C) DETOUR	(D) DETOUR	(E) END DETOUR	(F) ROAD CLOSED TRAFFIC TRAFFIC	(G) ROAD CLOSED	(H) COUNTRY PLACE DRIVE	(I) TEMPORARY DRIVE
------------------	------------	------------	------------	----------------	---------------------------------	-----------------	-------------------------	---------------------

**PHASE WORK ZONE AREA**

BEST SET ONLY  
 NOT FOR CONSTRUCTION

DATE PLOTTED: 12/1/19 10:00 AM