

REVIEW BY FORT BEND COUNTY COMMISSIONERS COURT

On this 8th day of March, 2016, Commissioners Court came on to be heard and reviewed the accompanying notice of LECON, Inc.

Job Location 2720 Country Place Dr., Richmond, TX 77406

Date 2/22/2016 Bond No. no bond required, Permit No. 2016-5639 to make use of certain Fort Bend County property subject to, "A Revised Order Regulating the Laying, Construction, Maintenance, and Repair of Buried Cables, Conduits, and Pole Lines, In, Under, Across or Along Roads, Streets, Highways, and Drainage Ditches in Fort Bend County, Texas, Under the Jurisdiction of the Commissioners Court of Fort Bend County, Texas," as passed by the Commissioners Court of Fort Bend County, Texas the 3rd day of August, 1987, recorded in Volume _____ of the Minutes of the Commissioners Court of Fort Bend County, Texas, to the extent that such order is not inconsistent with Article 1436a, Vernon's Texas Civil Statutes. Upon Motion of Commissioner _____, seconded by Commissioner _____, duly put and carried, it is ORDERED, ADJUDGED AND DECREED that said notice of said above purpose is hereby acknowledged by the Commissioners Court of Fort Bend County, Texas, and that said notice be placed on record according to the regulation order thereof.

Notes:

1. Evidence of review by the Commissioners Court must be kept on the job site and failure to do so constitutes grounds for job shutdown.
2. Written notices are required:
 - a. 48 hours in advance of construction start up, and
 - b. when construction is completed and ready for final inspection
 Mail notices to: Permit Administrator
 Fort Bend County Engineering
 301 Jackson Street
 Richmond, Texas 77469
 281-633-7500
3. This permit expires one (1) year from date of permit if construction has not commenced.

By: *Charles O. Dy*
for County Engineer

Presented to Commissioners Court and approved.
Recorded in Volume _____

By: N/A
Drainage District Engineer/Manager

Minutes of Commissioners Court

Clerk of Commissioners Court

By: _____
Deputy

CONSTRUCTION OF THE GROVE 4 & 5 DRAINAGE IMPROVEMENTS

IN
FORT BEND COUNTY, TEXAS

FOR PECAN GROVE MUNICIPAL UTILITY DISTRICT

INDEX OF DRAWINGS

SHEET No.	TITLE
1	COVER SHEET & INDEX
2	PROJECT OVERALL & PREVENTION PREVENTION DETAILS
3	CONSTRUCTION NOTES

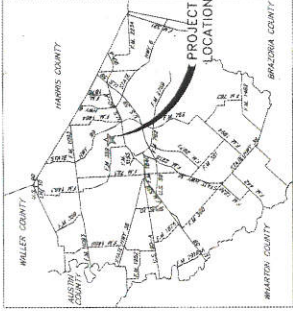
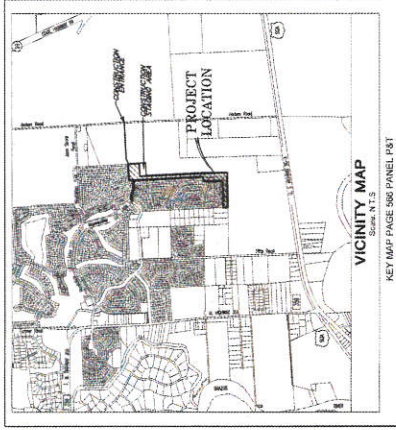
SHEET No.	TITLE
4	PLAN & PROFILE BASELINE A
5	PLAN & PROFILE BASELINE B
6	PLAN & PROFILE BASELINE C
7	PLAN & PROFILE BASELINE D
8	PLAN & PROFILE BASELINE E
9	PLAN & PROFILE BASELINE F
10	PLAN & PROFILE BASELINE G
11	PLAN & PROFILE BASELINE H
12	PLAN & PROFILE BASELINE I
13	PLAN & PROFILE BASELINE J
14	PLAN & PROFILE BASELINE K
15	PLAN & PROFILE BASELINE L
16	PLAN & PROFILE BASELINE M
17	PLAN & PROFILE BASELINE N

SHEET No.	TITLE
18	MISCELLANEOUS
19	CITY OF RICHMOND STANDARD CONSTRUCTION DETAILS - STORM SEWER
20	CITY OF RICHMOND STANDARD CONSTRUCTION DETAILS - SANITARY SEWER
21	CITY OF RICHMOND STANDARD CONSTRUCTION DETAILS - WATER
22	CITY OF RICHMOND STANDARD CONSTRUCTION DETAILS - PAVING I
23	CITY OF RICHMOND STANDARD CONSTRUCTION DETAILS - PAVING II
24	TRAFFIC CONTROL PLAN

CITY OF RICHMOND, TEXAS
APPROVED BY:

[Signature]
DATE: 11/14/14
[Signature]
DATE: 11/14/14

NOTE: Approval Void After One Year From Date Signed. If Construction Has Not Begun.



NOTES

These plans were prepared to meet or exceed the specifications and requirements of City of Richmond and Fort Bend County as currently amended. Approval by Fort Bend County will be deemed void if construction has not begun within one year of approval date.

Construction will be performed under the supervision of a licensed professional engineer of JONES & CARTER, INC.

Construction shall notify the Fort Bend County, Engineering Department at least 48 hours prior to commencement of construction at construction@fortbendcounty.gov.

1. Only 10' Maximum & Professional Engineer Allowed on All Dates of Issue on Multiple Issue. There shall be a 10' Maximum on any project of utility. The contractor shall be held responsible for the construction work. (Refer to the City of Richmond, Texas, Engineering Department for more information.)



BB SET ONLY
NOT FOR CONSTRUCTION

CALL BEFORE YOU DIG!!!
TEXAS 811
1-800-344-7377
LONE STAR NOTIFICATION CENTER
1-800-955-5244

FORT BEND COUNTY ENGINEER
ENGINEER: *[Signature]*
DATE: 11/14/14
DATE OF APPROVAL: 11/14/14
DATE OF APPROVAL: 11/14/14
DATE: 11/14/14

PECAN GROVE MUNICIPAL UTILITY DISTRICT

JONES & CARTER, INC. PROJECT NUMBER 00034-0388-01
NOVEMBER 2014

J.C. JONES & CARTER, INC.
Professional Engineers No. 2414
6415 Hempstead Road Houston, Texas 77071 (832) 241-3821

[Signature]
PECAN GROVE MUNICIPAL UTILITY DISTRICT ENGINEER
DATE: 11-14-14
SIGNATURE VALID FOR ONE (1) YEAR

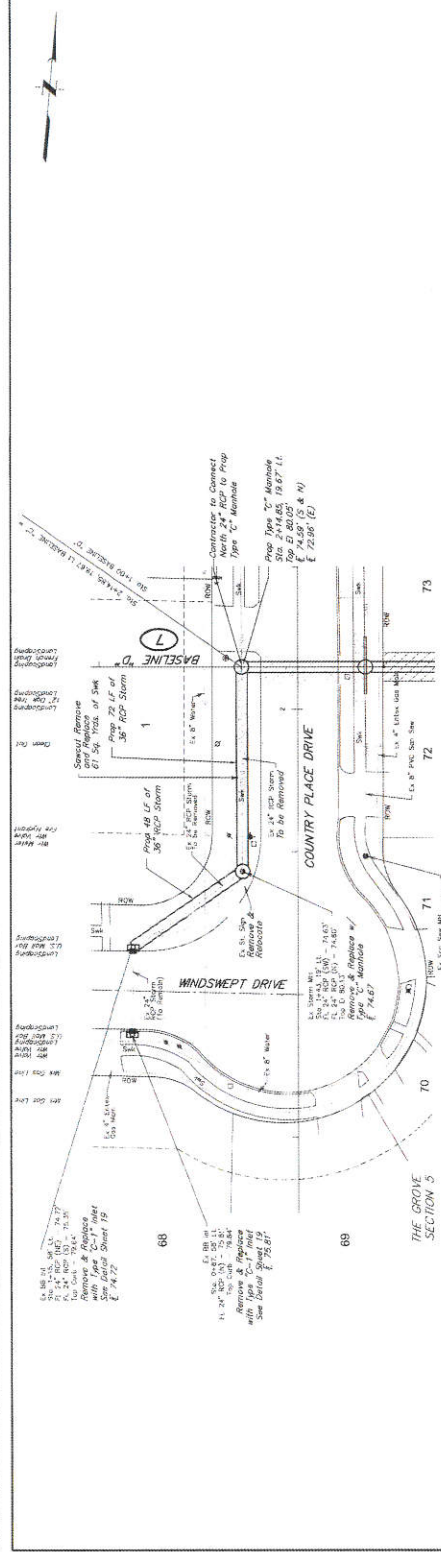
BENCHMARKS
 NGS Monument No. 1004, Stone City in Top of NW 1/4 of the NE 1/4 of Section 14 of a concrete bridge under construction and 1.45 miles NE of Johnson County, Texas
 Elevation = 82.86' (NAVD 88)

I.B.M. "C"
 SEE SPECIFICATIONS FOR THE INSTALLATION OF INVERTS AND RECORD AND DOCUMENTATION TO THE CITY OF DALLAS.
 ELEVATION = 79.36' (NAVD 88)

I.B.M. "E"
 SEE SPECIFICATIONS FOR THE INSTALLATION OF INVERTS AND RECORD AND DOCUMENTATION TO THE CITY OF DALLAS.
 ELEVATION = 79.83' (NAVD 88)

I.B.M. "H"
 SEE SPECIFICATIONS FOR THE INSTALLATION OF INVERTS AND RECORD AND DOCUMENTATION TO THE CITY OF DALLAS.
 ELEVATION = 79.24' (NAVD 88)

NOTE:
 THE SMALL LINE CENTER LINE SHALL BE CONSIDERED THE PROJECT DATA. ALL DIMENSIONS TO THE CENTER LINE SHALL BE PROJECTED TO THE CENTER LINE. ALL DIMENSIONS TO THE CENTER LINE SHALL BE PROJECTED TO THE CENTER LINE. ALL DIMENSIONS TO THE CENTER LINE SHALL BE PROJECTED TO THE CENTER LINE.



APPROVED: *[Signature]*
 DATE: 12/2/14
 PROJECT ENGINEER

SCALE: 1" = 20'
 0 10 20 30 40 50

PRIVATE UTILITY LINES SHOWN
 AS SHOWN FOR INFORMATION ONLY. THE CONTRACTOR SHALL VERIFY THE LOCATION AND DEPTH OF ALL UTILITIES PRIOR TO CONSTRUCTION.

DATE: 12/2/14
 DRAWN BY: JWC
 CHECKED BY: JWC
 SUBMITTED: 12/2/14

PEACAN GROVE MUNICIPAL UTILITY DISTRICT
 FORT BEND COUNTY, TEXAS

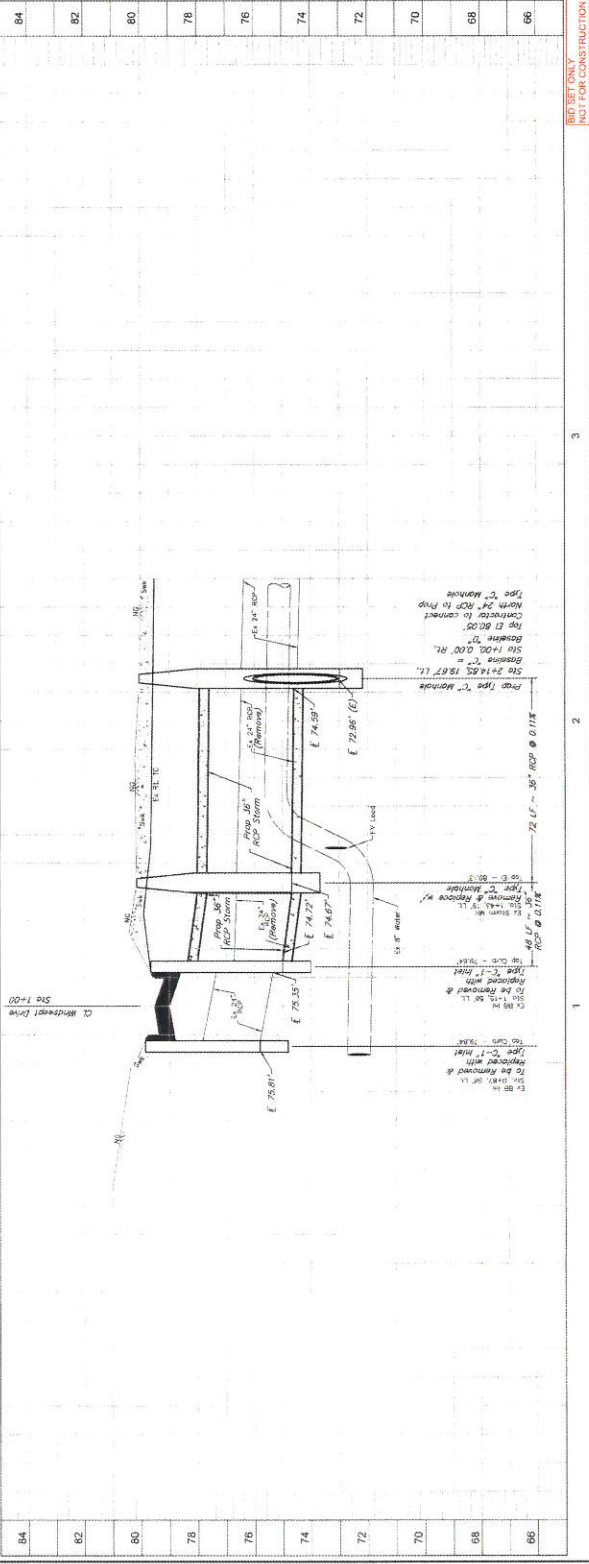
THE GROVE # 4 & 5
 DRAINAGE IMPROVEMENTS
 PLAN & PROFILE
 BASELINE C
 STA 1+00 - 2+50

J.C. JONES & CARTER, INC.
 10000 N. FORT WORTH AVENUE, SUITE 100
 FORT WORTH, TEXAS 76134
 PHONE: 817-335-1111
 FAX: 817-335-1112

DESIGNED BY: JWC
 CHECKED BY: JWC
 SUBMITTED: 12/2/14

DATE: 12/2/14
 DRAWN BY: JWC
 CHECKED BY: JWC
 SUBMITTED: 12/2/14

BASELINE C (ALTERNATE A)



85 SET ONLY
 NOT FOR CONSTRUCTION

BENCHMARK

NSS Monument No. 1808, Brass Cap at Top of NW End of Section 5, T14N, R10E, S10E, 1 Mile SW of Junction of T14N and R10E, 1.45 Miles NE of Rockwood Court House. Elevation = 12.86' (NAVD 88)

T.M. 11'
 CENTERLINE OF THE INTERSECTION OF MAINSTREET AND COUNTY ROAD 27, N. OF MAINWAY
 ELEVATION = 16.36' (NAVD 88)

T.M. 12'
 CENTERLINE OF THE INTERSECTION OF HOODWIND DRIVE AND COUNTY ROAD 27
 ELEVATION = 19.21' (NAVD 88)

T.M. 13'
 CENTERLINE OF THE INTERSECTION OF RETURNWELL ROAD AND COUNTY ROAD 27
 ELEVATION = 19.34' (NAVD 88)

NOTE:
 THIS DRAWING SHALL BE CONSIDERED AS A PRELIMINARY DESIGN. THE CONTRACTOR SHALL BE RESPONSIBLE FOR VERIFYING ALL DIMENSIONS AND ELEVATIONS. THE CONTRACTOR SHALL BE RESPONSIBLE FOR OBTAINING ALL NECESSARY PERMITS AND APPROVALS FROM THE APPROPRIATE AGENCIES. THE CONTRACTOR SHALL BE RESPONSIBLE FOR OBTAINING ALL NECESSARY EASEMENTS AND RIGHTS-OF-WAY FROM THE PRIVATE OWNERS.

APPROVED: *[Signature]*
 DATE: 1/12/14



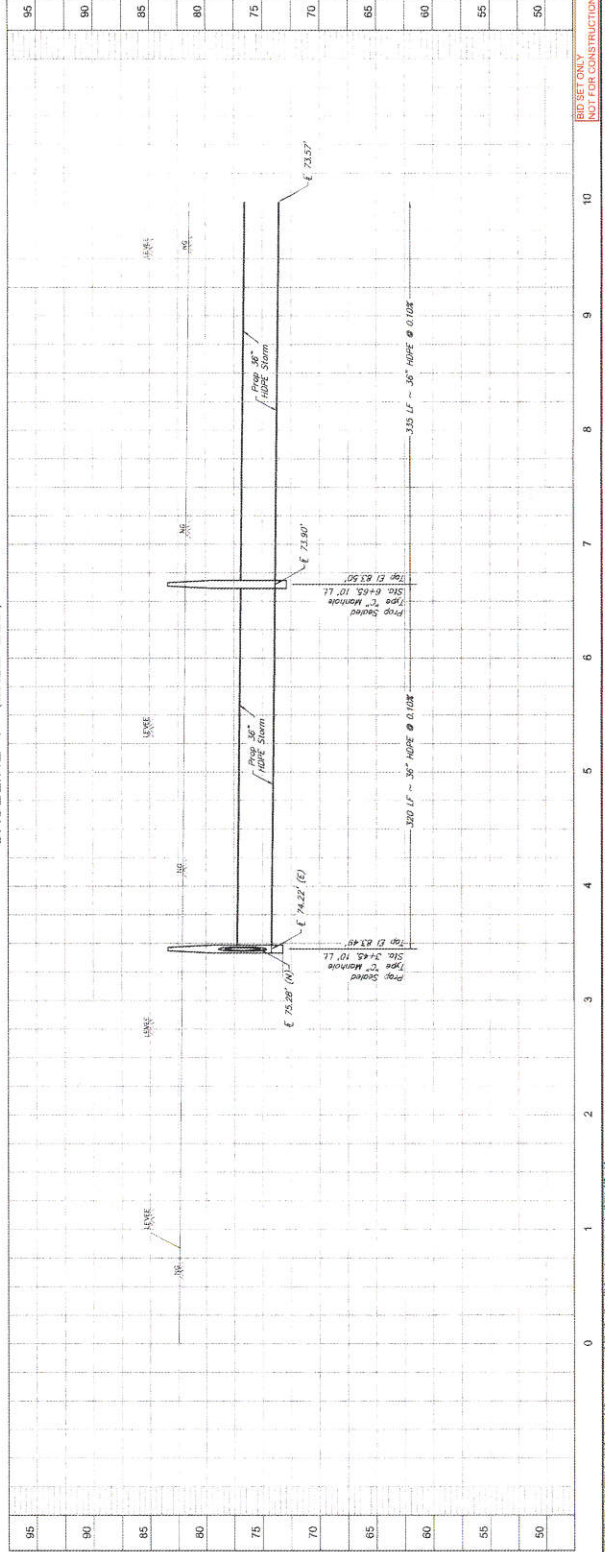
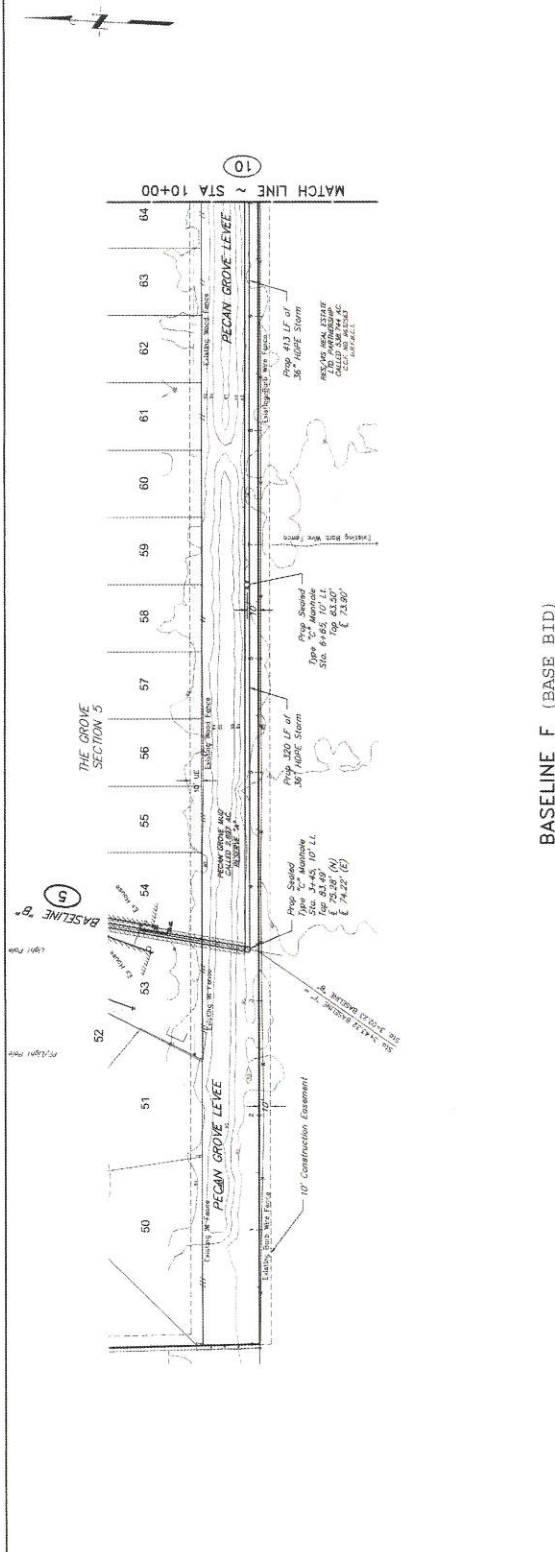
PRIVATE UTILITY LINES SHOWN
 (AS SHOWN ON THE SURVEY INSTRUMENTS AND RECORDS)
 CONTRACTOR TO VERIFY ALL UTILITY LINES AND DEPTHS PRIOR TO CONSTRUCTION.
 (SEE SHEET FOR UTILITY LINES)
 CONTRACTOR TO VERIFY ALL UTILITY LINES AND DEPTHS PRIOR TO CONSTRUCTION.
 (SEE SHEET FOR UTILITY LINES)

NO.	DATE	REVISIONS

PECAN GROVE MUNICIPAL UTILITY DISTRICT
 FORT BEND COUNTY, TEXAS

THE GROVE 4 & 5
 DRAINAGE IMPROVEMENTS
 PLAN & PROFILE
 BASELINE F
 STA 0+00 - 10+00

JONES & CARTER, INC.
 ENGINEERS & ARCHITECTS
 1011 North Loop West, Suite 1000, Houston, Texas 77002
 (713) 865-1000
 DATE: 1/12/14
 JOB NO.: 10034-14-01
 DRAWN BY: JCB
 CHECKED BY: JCB
 SUBMITTED BY: JCB
 P.L. NO.:



BIG SET ONLY
 NOT FOR CONSTRUCTION

BENCHMARK
 NGS Monument 102, Beck, Bench, Call in Top of NW Corner of
 the NE Quarter of a Contiguous Block Under Easement,
 Section 10, Township 34N, Range 12E, Meridian 10W, P.M. 200
 491.41 Meters NE of Intersection of County Road 101
 Extension & 92.80' (NAVD 83)

T.B.M. 20
 100' SPACING 4.4' W. OF THE INTERSECTION OF MAINWAY & COUNTY ROAD 101 (EASEMENT) 11.4' E. OF BENCHMARK
 ELEVATION = 70.20' (NAVD 83)

T.B.M. 21
 100' SPACING 4.4' W. OF THE INTERSECTION OF MAINWAY & COUNTY ROAD 101 (EASEMENT) 11.4' E. OF BENCHMARK
 ELEVATION = 70.20' (NAVD 83)

T.B.M. 22
 100' SPACING 4.4' W. OF THE INTERSECTION OF MAINWAY & COUNTY ROAD 101 (EASEMENT) 11.4' E. OF BENCHMARK
 ELEVATION = 70.20' (NAVD 83)

T.B.M. 23
 100' SPACING 4.4' W. OF THE INTERSECTION OF MAINWAY & COUNTY ROAD 101 (EASEMENT) 11.4' E. OF BENCHMARK
 ELEVATION = 70.20' (NAVD 83)

T.B.M. 24
 100' SPACING 4.4' W. OF THE INTERSECTION OF MAINWAY & COUNTY ROAD 101 (EASEMENT) 11.4' E. OF BENCHMARK
 ELEVATION = 70.20' (NAVD 83)

T.B.M. 25
 100' SPACING 4.4' W. OF THE INTERSECTION OF MAINWAY & COUNTY ROAD 101 (EASEMENT) 11.4' E. OF BENCHMARK
 ELEVATION = 70.20' (NAVD 83)

NOTE:
 CONTRACTOR SHALL USE CALCULATIONS DETERMINED BY THE ENGINEER TO LOCATE ALL POINTS TO BE SET BY THE CONTRACTOR. THE CONTRACTOR SHALL BE RESPONSIBLE FOR THE ACCURACY OF ALL POINTS SET BY THE CONTRACTOR. THE CONTRACTOR SHALL BE RESPONSIBLE FOR THE ACCURACY OF ALL POINTS SET BY THE CONTRACTOR. THE CONTRACTOR SHALL BE RESPONSIBLE FOR THE ACCURACY OF ALL POINTS SET BY THE CONTRACTOR.

APPROVED: [Signature] DATE: 11/21/14
 SUPERVISOR CONTRACTOR

SCALE: 1" = 20'
 PRIVATE UTILITY LINES SHOWN
 ALIGNED TO THE CENTERLINE OF THE ROAD
 FOR REFERENCE ONLY. THE CONTRACTOR SHALL VERIFY THE LOCATION AND DEPTH OF ALL UTILITY LINES PRIOR TO CONSTRUCTION.

THE GROVE 4 & 5
 DRAINAGE IMPROVEMENTS
 PLAN & PROFILE
 BASELINE F
 STA 10+00 - 17+00

J.C. JONES & CARTER, INC.
 10000 N. W. 10th St., Suite 100, Fort Worth, TX 76177
 PHONE: (817) 412-1111 FAX: (817) 412-1112
 WWW: www.jcjc.com

DESIGNED BY: T.C. JONES
 CHECKED BY: T.C. JONES
 DATE: OCTOBER 2014
 DRAW NO: 2014-038-02 DRAW DATE: 10/15/14
 SUBMITTED: 10/15/14
 P.E. NO: 10000

PECAN GROVE MUNICIPAL UTILITY DISTRICT
 FORT BEND COUNTY TEXAS

DATE: 11/21/14

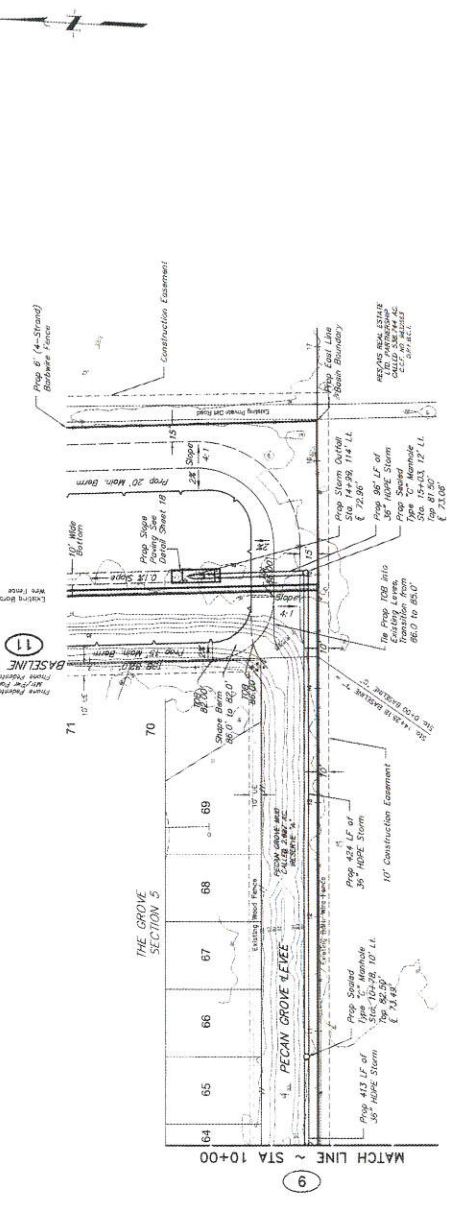
0 10 20 30 40 50 60 70 80 90 100 110 120 130 140 150 160 170

55
50

95
90
85
80
75
70
65
60
55
50

10 11 12 13 14 15 16 17

THIS SET ONLY
 NOT FOR CONSTRUCTION



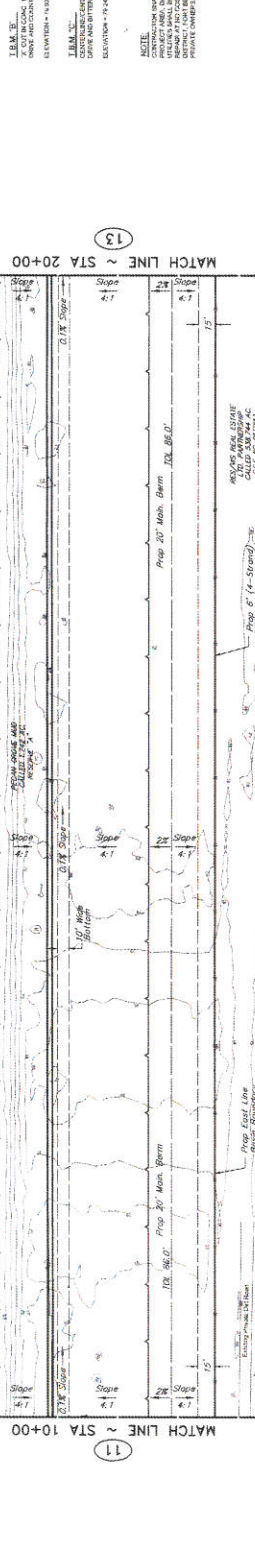
BENCHMARK
 NGVD Mean Sea Level, Brown County, Texas (M.S.L.)
 The Adjustment of Concrete Slugs Under Foundation
 and 1.4 Mils. The Accuracy of Stationing of A.R. 359
 Stationing is as follows:
 Elevation = 62.88' (NAD 83)

TERM 3C
 COMPLETE 40% OF THE INTERSECTION OF MANHOLE
 COURT AND REPAIRMENT DRIVE, I.R. 18, BERRILL
 DISTRICT, FORT BEND COUNTY, TEXAS

TERM 3E
 COMPLETE 40% OF THE INTERSECTION OF MANHOLE
 COURT AND REPAIRMENT DRIVE, I.R. 18, BERRILL
 DISTRICT, FORT BEND COUNTY, TEXAS

TERM 3F
 COMPLETE 40% OF THE INTERSECTION OF REPAIRMENT
 DRIVE AND REPAIRMENT COURT,
 DISTRICT, FORT BEND COUNTY, TEXAS

NOTE
 CONTRACTOR SHALL USE CAUTION WHEN EXCAVATING IN
 AREAS WHERE THERE ARE UNDETECTABLE UTILITY
 LINES. SHALL BE THE RESPONSIBILITY OF CONTRACTOR TO
 IDENTIFY AND REMOVE ALL UTILITY LINES TO
 PREVENT DAMAGE.



APPROVED: [Signature]
DATE: 12/2/14
SCALE: 1" = 30'
PRIVATE UTILITY LINES SHOWN
 (BASED ON THE SURVEY OF 12/2/14)

NO.	DATE	REVISIONS	BY
1			
2			
3			
4			
5			
6			
7			
8			
9			
10			
11			
12			
13			
14			
15			
16			
17			
18			
19			
20			
21			
22			
23			
24			
25			
26			
27			
28			
29			
30			
31			
32			
33			
34			
35			
36			
37			
38			
39			
40			
41			
42			
43			
44			
45			
46			
47			
48			
49			
50			
51			
52			
53			
54			
55			
56			
57			
58			
59			
60			
61			
62			
63			
64			
65			
66			
67			
68			
69			
70			
71			
72			
73			
74			
75			
76			
77			
78			
79			
80			
81			
82			
83			
84			
85			
86			
87			
88			
89			
90			
91			
92			
93			
94			
95			
96			
97			
98			
99			
100			

THE GROVE SECTION 4
 VOL. 31, PG. 11
 F.B.C.M.R.

AREA OF EXCAVATION
 AREA OF EXCAVATION
 AREA OF EXCAVATION
 AREA OF EXCAVATION

BASELINE G (BASE BID)

STA 10+00 ~ STA 20+00

THE GROVE 4 & 5
DRAINAGE IMPROVEMENTS
PLAN & PROFILE
BASELINE G
STA 10+00 - 20+00

J.C. JONES & CARTER, INC.
 10000 N. LOOP WEST, SUITE 1000, FORT WORTH, TEXAS 76137
 PHONE: (817) 335-1111 FAX: (817) 335-1112
 WWW: WWW.JCJONESANDCARTER.COM

DESIGNED BY: J.C. JONES
CHECKED BY: J.C. JONES
DATE: 12/2/14
SCALE: 1" = 30'
PROJECT NO.: 14-000000-000
DATE: 12/2/14
PROJECT: THE GROVE 4 & 5
LOCATION: FORT BEND COUNTY, TEXAS

THIS SET ONLY
NOT FOR CONSTRUCTION

12
OF 12