

REVIEW BY FORT BEND COUNTY COMMISSIONERS COURT

On this 1st day of March, 2016, Commissioners Court came on to be heard and reviewed the accompanying notice of frz investments / Salvage Experts, LLC
Job Location 15535 West Bellfort, Sugar Land, TX 77498
Date 2/22/2016 Bond No. 1281105584, Permit No. 2015-3116 to make use of certain Fort Bend County property subject to, "A Revised Order Regulating the Laying, Construction, Maintenance, and Repair of Buried Cables, Conduits, and Pole Lines, In, Under, Across or Along Roads, Streets, Highways, and Drainage Ditches in Fort Bend County, Texas, Under the Jurisdiction of the Commissioners Court of Fort Bend County, Texas," as passed by the Commissioners Court of Fort Bend County, Texas the 3rd day of August, 1987, recorded in Volume _____ of the Minutes of the Commissioners Court of Fort Bend County, Texas, to the extent that such order is not inconsistent with Article 1436a, Vernon's Texas Civil Statutes. Upon Motion of Commissioner _____, seconded by Commissioner _____, duly put and carried, it is ORDERED, ADJUDGED AND DECREED that said notice of said above purpose is hereby acknowledged by the Commissioners Court of Fort Bend County, Texas, and that said notice be placed on record according to the regulation order thereof.

Notes:

1. Evidence of review by the Commissioners Court must be kept on the job site and failure to do so constitutes grounds for job shutdown.
2. Written notices are required:
 - a. 48 hours in advance of construction start up, and
 - b. when construction is completed and ready for final inspectionMail notices to: Permit Administrator
Fort Bend County Engineering
301 Jackson Street
Richmond, Texas 77469
281-633-7500
3. This permit expires one (1) year from date of permit if construction has not commenced.

By: 
for County Engineer

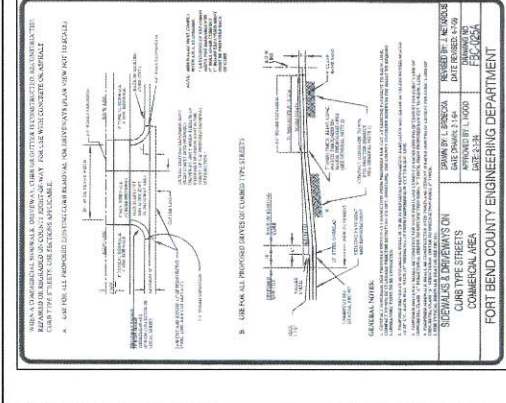
Presented to Commissioners Court and approved.
Recorded in Volume _____

Minutes of Commissioners Court

By: N/A
Drainage District Engineer/Manager

Clerk of Commissioners Court

By: _____
Deputy



- GENERAL NOTES FOR SIDEWALKS AND DRIVEWAYS:**
1. SIDEWALKS SHALL BE CONSTRUCTED WITH PORTLAND CEMENT CONCRETE (PCC) WITH A MINIMUM STRENGTH OF 4000 PSI. THE FINISH SHALL BE TO FACE UNLESS OTHERWISE NOTED.
 2. SIDEWALKS SHALL BE CONSTRUCTED WITH PORTLAND CEMENT CONCRETE (PCC) WITH A MINIMUM STRENGTH OF 4000 PSI. THE FINISH SHALL BE TO FACE UNLESS OTHERWISE NOTED.
 3. SIDEWALKS SHALL BE CONSTRUCTED WITH PORTLAND CEMENT CONCRETE (PCC) WITH A MINIMUM STRENGTH OF 4000 PSI. THE FINISH SHALL BE TO FACE UNLESS OTHERWISE NOTED.
 4. SIDEWALKS SHALL BE CONSTRUCTED WITH PORTLAND CEMENT CONCRETE (PCC) WITH A MINIMUM STRENGTH OF 4000 PSI. THE FINISH SHALL BE TO FACE UNLESS OTHERWISE NOTED.
 5. SIDEWALKS SHALL BE CONSTRUCTED WITH PORTLAND CEMENT CONCRETE (PCC) WITH A MINIMUM STRENGTH OF 4000 PSI. THE FINISH SHALL BE TO FACE UNLESS OTHERWISE NOTED.
 6. SIDEWALKS SHALL BE CONSTRUCTED WITH PORTLAND CEMENT CONCRETE (PCC) WITH A MINIMUM STRENGTH OF 4000 PSI. THE FINISH SHALL BE TO FACE UNLESS OTHERWISE NOTED.
 7. SIDEWALKS SHALL BE CONSTRUCTED WITH PORTLAND CEMENT CONCRETE (PCC) WITH A MINIMUM STRENGTH OF 4000 PSI. THE FINISH SHALL BE TO FACE UNLESS OTHERWISE NOTED.
 8. SIDEWALKS SHALL BE CONSTRUCTED WITH PORTLAND CEMENT CONCRETE (PCC) WITH A MINIMUM STRENGTH OF 4000 PSI. THE FINISH SHALL BE TO FACE UNLESS OTHERWISE NOTED.
 9. SIDEWALKS SHALL BE CONSTRUCTED WITH PORTLAND CEMENT CONCRETE (PCC) WITH A MINIMUM STRENGTH OF 4000 PSI. THE FINISH SHALL BE TO FACE UNLESS OTHERWISE NOTED.
 10. SIDEWALKS SHALL BE CONSTRUCTED WITH PORTLAND CEMENT CONCRETE (PCC) WITH A MINIMUM STRENGTH OF 4000 PSI. THE FINISH SHALL BE TO FACE UNLESS OTHERWISE NOTED.

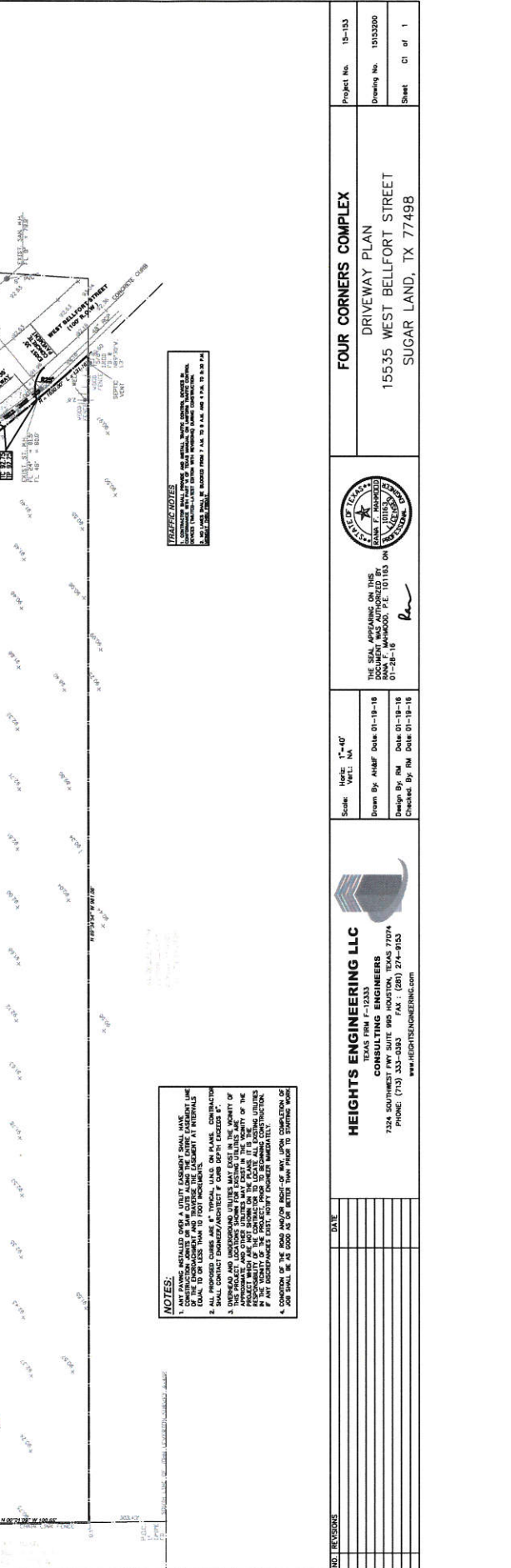
VICINITY MAP
KEY MAP 5382

LEGAL DESCRIPTION
 ALL THE ELEVATIONS SHOWN HEREON ARE IN NAVD 83 DATUM, 2000 EDITION. THE ELEVATION OF THE CORNER BENCHMARK IS 100.00 FEET ABOVE MEAN SEA LEVEL. THE ELEVATION OF THE CORNER BENCHMARK IS 100.00 FEET ABOVE MEAN SEA LEVEL.

BENCHMARK
 ALL THE ELEVATIONS SHOWN HEREON ARE IN NAVD 83 DATUM, 2000 EDITION. THE ELEVATION OF THE CORNER BENCHMARK IS 100.00 FEET ABOVE MEAN SEA LEVEL. THE ELEVATION OF THE CORNER BENCHMARK IS 100.00 FEET ABOVE MEAN SEA LEVEL.

FLOOD PLAIN DATA
 ALL THE ELEVATIONS SHOWN HEREON ARE IN NAVD 83 DATUM, 2000 EDITION. THE ELEVATION OF THE CORNER BENCHMARK IS 100.00 FEET ABOVE MEAN SEA LEVEL. THE ELEVATION OF THE CORNER BENCHMARK IS 100.00 FEET ABOVE MEAN SEA LEVEL.

LEGEND
 PROPERTY LINE
 HIGH POINT (H.P.)
 SECTION OF FLOOD PLAIN
 STORMWATER SEWER MANHOLE
 CURB AND GUTTER
 DRIVEWAY
 SIDEWALK
 EXISTING GRADE ELEVATIONS
 FLOW LINE ELEVATION
 PROPOSED ELEVATION OF TOP OF GRADE OF ALLEY
 PROPOSED ELEVATION OF CURB ELEVATION
 PROPOSED TOP OF PARALLEL ELEVATION



LEGEND
 PROPERTY LINE
 HIGH POINT (H.P.)
 SECTION OF FLOOD PLAIN
 STORMWATER SEWER MANHOLE
 CURB AND GUTTER
 DRIVEWAY
 SIDEWALK
 EXISTING GRADE ELEVATIONS
 FLOW LINE ELEVATION
 PROPOSED ELEVATION OF TOP OF GRADE OF ALLEY
 PROPOSED ELEVATION OF CURB ELEVATION
 PROPOSED TOP OF PARALLEL ELEVATION

NOTES:

1. ANY PAVING INSTALLED OVER A UTILITY EXISTENT SHALL HAVE A MINIMUM 4" THICKNESS OF CONCOURSE AND SHALL BE CONSTRUCTED TO MATCH THE EXISTING PAVING.
2. ALL PROPOSED DRIVEWAYS SHALL BE CONSTRUCTED WITH PORTLAND CEMENT CONCRETE (PCC) WITH A MINIMUM STRENGTH OF 4000 PSI. THE FINISH SHALL BE TO FACE UNLESS OTHERWISE NOTED.
3. THE PAVING SHALL BE CONSTRUCTED WITH PORTLAND CEMENT CONCRETE (PCC) WITH A MINIMUM STRENGTH OF 4000 PSI. THE FINISH SHALL BE TO FACE UNLESS OTHERWISE NOTED.
4. THE PAVING SHALL BE CONSTRUCTED WITH PORTLAND CEMENT CONCRETE (PCC) WITH A MINIMUM STRENGTH OF 4000 PSI. THE FINISH SHALL BE TO FACE UNLESS OTHERWISE NOTED.
5. THE PAVING SHALL BE CONSTRUCTED WITH PORTLAND CEMENT CONCRETE (PCC) WITH A MINIMUM STRENGTH OF 4000 PSI. THE FINISH SHALL BE TO FACE UNLESS OTHERWISE NOTED.
6. THE PAVING SHALL BE CONSTRUCTED WITH PORTLAND CEMENT CONCRETE (PCC) WITH A MINIMUM STRENGTH OF 4000 PSI. THE FINISH SHALL BE TO FACE UNLESS OTHERWISE NOTED.
7. THE PAVING SHALL BE CONSTRUCTED WITH PORTLAND CEMENT CONCRETE (PCC) WITH A MINIMUM STRENGTH OF 4000 PSI. THE FINISH SHALL BE TO FACE UNLESS OTHERWISE NOTED.
8. THE PAVING SHALL BE CONSTRUCTED WITH PORTLAND CEMENT CONCRETE (PCC) WITH A MINIMUM STRENGTH OF 4000 PSI. THE FINISH SHALL BE TO FACE UNLESS OTHERWISE NOTED.
9. THE PAVING SHALL BE CONSTRUCTED WITH PORTLAND CEMENT CONCRETE (PCC) WITH A MINIMUM STRENGTH OF 4000 PSI. THE FINISH SHALL BE TO FACE UNLESS OTHERWISE NOTED.
10. THE PAVING SHALL BE CONSTRUCTED WITH PORTLAND CEMENT CONCRETE (PCC) WITH A MINIMUM STRENGTH OF 4000 PSI. THE FINISH SHALL BE TO FACE UNLESS OTHERWISE NOTED.

FOUR CORNERS COMPLEX
 DRIVEWAY PLAN
 15535 WEST BELLFORT STREET
 SUGAR LAND, TX 77498

HEIGHTS ENGINEERING LLC
 TEXAS FIRM # 19333
 CONSULTING ENGINEERS
 7324 SADDLEBACK DRIVE, SUITE 900 HOUSTON, TEXAS 77074
 PHONE: (713) 340-1100 FAX: (713) 340-1101
 WWW.HEIGHTSENGINEERING.COM

THE SEAL APPEARING ON THIS DOCUMENT WAS AUTHORIZED BY
 STATE OF TEXAS
 PROFESSIONAL ENGINEERING
 01-28-18

Scale: Horiz: 1"=40'
 Vert: 1"=4'

Drawn By: MHEB Date: 01-19-18
Checked By: RM Date: 01-19-18
Checked By: RM Date: 01-19-18

Project No. 15-133
 Drawing No. 15133200
 Sheet 1 of 1