

REVIEW BY FORT BEND COUNTY COMMISSIONERS COURT

On this 23rd day of February, 2016, Commissioners Court came on to be heard and reviewed the accompanying notice of Millis Equipment Rental Job Location 6126 1/2 McCallister Falls DrQ, Sugar Land , TX 77479 Date 2/12/2016 Bond No. 106404925, Permit No. 2015-4649 to make use of certain Fort Bend County property subject to, "A Revised Order Regulating the Laying, Construction, Maintenance, and Repair of Buried Cables, Conduits, and Pole Lines, In, Under, Across or Along Roads, Streets, Highways, and Drainage Ditches in Fort Bend County, Texas, Under the Jurisdiction of the Commissioners Court of Fort Bend County, Texas," as passed by the Commissioners Court of Fort Bend County, Texas the 3rd day of August, 1987, recorded in Volume _____ of the Minutes of the Commissioners Court of Fort Bend County, Texas, to the extent that such order is not inconsistent with Article 1436a, Vernon's Texas Civil Statutes. Upon Motion of Commissioner _____, seconded by Commissioner _____, duly put and carried, it is ORDERED, ADJUDGED AND DECREED that said notice of said above purpose is hereby acknowledged by the Commissioners Court of Fort Bend County, Texas, and that said notice be placed on record according to the regulation order thereof.

Notes:

1. Evidence of review by the Commissioners Court must be kept on the job site and failure to do so constitutes grounds for job shutdown.
2. Written notices are required:
 - a. 48 hours in advance of construction start up, and
 - b. when construction is completed and ready for final inspection
 Mail notices to: Permit Administrator
 Fort Bend County Engineering
 301 Jackson Street
 Richmond, Texas 77469
 281-633-7500
3. This permit expires one (1) year from date of permit if construction has not commenced.

By: Charles O. DeF...
County Engineer

Presented to Commissioners Court and approved.
Recorded in Volume _____

By: N/A
Drainage District Engineer/Manager

Minutes of Commissioners Court

Clerk of Commissioners Court

By: _____
Deputy

County of Fort Bend

Engineering Department

301 Jackson Street
Richmond, Texas 77469

Johnny Ortega
Permit Administrator

Phone: (281) 633-7500

Permit Application Review Form For Cable, Conduit, and Pole Line Activity In Fort Bend County

Permit No. 2015-4649

The following "Notice of Proposed Cable, Conduit, and/or Pole Line activity in Fort Bend County" and accompanying attachments have been reviewed and the notice conforms to appropriate regulations set by Commissioner's Court of Fort Bend County, Texas.

- (1) Complete Application Form:
- a. Name of road, street, and/or drainage ditch affected.
- b. Vicinity map showing course of directions
- c. Plans and specifications
- (2) Bond:
- District Attorney, approval when applicable.
- Perpetual bond currently posted.
- No: _____
- Amount: _____
- Performance bond submitted.
- No: 106404925
- Amount: \$5,000.00
- Cashier's Check
- No: _____
- Amount: _____
- (3) Verbal permission given for emergencies, to start construction before approved in Commissioner's Court.

Precinct Engineer Acknowledgment

Date

Precinct Commissioner Acknowledgment

Date

(4)

Drainage District Approval when applicable

We have reviewed this project and agree it meets minimum requirements.

 CFM

Johnny Ortega CFM/Permit Administrator



Date

SITE PLAN

FOR

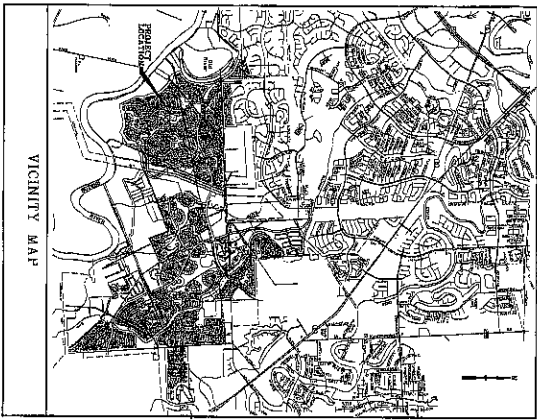
WATER, SEWER, DRAINAGE & PAVING IMPROVEMENTS FOR

RIVERSTONE

AVALON SOUTH CENTRAL PARK

FORT BEND COUNTY MUD NO. 128

FORT BEND COUNTY, TEXAS



VICINITY MAP



APPROVAL OF THE CITY OF FORT BEND COUNTY FOR THE PROPOSED AND PAVING IMPROVEMENTS SHALL BE MADE WITHIN ONE YEAR FROM THE DATE OF APPROVAL. CITY OF FORT BEND COUNTY MUD NO. 128. NO CONSTRUCTION SHALL BEGIN UNTIL CURB SHEET IS SIGNED.

CITY OF FORT BEND COUNTY

DATE: _____

FORT BEND COUNTY

ENGINEER: *[Signature]*

DATE: 11/11/11

THESE SPECIFICATIONS ARE VOID IF CONSTRUCTION HAS NOT COMMENCED IN ONE YEAR FROM DATE OF APPROVAL.

APPROVED: *[Signature]*

DATE: 11/11/11

Costello
Engineering and Surveying
9950 Richmond Avenue, Suite 450
Houston, Texas 77042
(713) 783-7788 (713) 783-3590 Fax
JOB NO. 8014-014-002

CONTACT PERSONS:
CITY OF FORT BEND COUNTY - ENGINEERING DEPT. 281-2728-2788
FORT BEND COUNTY MUD NO. 128 - OPERATOR - ST. ENVIRONMENTAL 822-499-1888
FORT BEND COUNTY MUD NO. 128 - ENGINEER - COSWELL, INC. 713-783-7788
FORT BEND COUNTY DRAINAGE DISTRICT 281-242-2802

INDEX OF DRAWINGS

SHEET NO.	DESCRIPTION
81-01	GENERAL CONSTRUCTION NOTES 1
81-02	GENERAL CONSTRUCTION NOTES 2
81-03	GENERAL CONSTRUCTION NOTES 3
81-04	GENERAL CONSTRUCTION NOTES 4
81-05	GENERAL CONSTRUCTION NOTES 5
81-06	GENERAL CONSTRUCTION NOTES 6
81-07	GENERAL CONSTRUCTION NOTES 7
81-08	GENERAL CONSTRUCTION NOTES 8
81-09	GENERAL CONSTRUCTION NOTES 9
81-10	GENERAL CONSTRUCTION NOTES 10
81-11	GENERAL CONSTRUCTION NOTES 11
81-12	GENERAL CONSTRUCTION NOTES 12
81-13	GENERAL CONSTRUCTION NOTES 13
81-14	GENERAL CONSTRUCTION NOTES 14
81-15	GENERAL CONSTRUCTION NOTES 15
81-16	GENERAL CONSTRUCTION NOTES 16
81-17	GENERAL CONSTRUCTION NOTES 17
81-18	GENERAL CONSTRUCTION NOTES 18
81-19	GENERAL CONSTRUCTION NOTES 19
81-20	GENERAL CONSTRUCTION NOTES 20
81-21	GENERAL CONSTRUCTION NOTES 21
81-22	GENERAL CONSTRUCTION NOTES 22
81-23	GENERAL CONSTRUCTION NOTES 23
81-24	GENERAL CONSTRUCTION NOTES 24
81-25	GENERAL CONSTRUCTION NOTES 25
81-26	GENERAL CONSTRUCTION NOTES 26
81-27	GENERAL CONSTRUCTION NOTES 27
81-28	GENERAL CONSTRUCTION NOTES 28
81-29	GENERAL CONSTRUCTION NOTES 29
81-30	GENERAL CONSTRUCTION NOTES 30
81-31	GENERAL CONSTRUCTION NOTES 31
81-32	GENERAL CONSTRUCTION NOTES 32
81-33	GENERAL CONSTRUCTION NOTES 33
81-34	GENERAL CONSTRUCTION NOTES 34
81-35	GENERAL CONSTRUCTION NOTES 35
81-36	GENERAL CONSTRUCTION NOTES 36
81-37	GENERAL CONSTRUCTION NOTES 37
81-38	GENERAL CONSTRUCTION NOTES 38
81-39	GENERAL CONSTRUCTION NOTES 39
81-40	GENERAL CONSTRUCTION NOTES 40
81-41	GENERAL CONSTRUCTION NOTES 41
81-42	GENERAL CONSTRUCTION NOTES 42
81-43	GENERAL CONSTRUCTION NOTES 43
81-44	GENERAL CONSTRUCTION NOTES 44
81-45	GENERAL CONSTRUCTION NOTES 45
81-46	GENERAL CONSTRUCTION NOTES 46
81-47	GENERAL CONSTRUCTION NOTES 47
81-48	GENERAL CONSTRUCTION NOTES 48
81-49	GENERAL CONSTRUCTION NOTES 49
81-50	GENERAL CONSTRUCTION NOTES 50
81-51	GENERAL CONSTRUCTION NOTES 51
81-52	GENERAL CONSTRUCTION NOTES 52
81-53	GENERAL CONSTRUCTION NOTES 53
81-54	GENERAL CONSTRUCTION NOTES 54
81-55	GENERAL CONSTRUCTION NOTES 55
81-56	GENERAL CONSTRUCTION NOTES 56
81-57	GENERAL CONSTRUCTION NOTES 57
81-58	GENERAL CONSTRUCTION NOTES 58
81-59	GENERAL CONSTRUCTION NOTES 59
81-60	GENERAL CONSTRUCTION NOTES 60
81-61	GENERAL CONSTRUCTION NOTES 61
81-62	GENERAL CONSTRUCTION NOTES 62
81-63	GENERAL CONSTRUCTION NOTES 63
81-64	GENERAL CONSTRUCTION NOTES 64
81-65	GENERAL CONSTRUCTION NOTES 65
81-66	GENERAL CONSTRUCTION NOTES 66
81-67	GENERAL CONSTRUCTION NOTES 67
81-68	GENERAL CONSTRUCTION NOTES 68
81-69	GENERAL CONSTRUCTION NOTES 69
81-70	GENERAL CONSTRUCTION NOTES 70
81-71	GENERAL CONSTRUCTION NOTES 71
81-72	GENERAL CONSTRUCTION NOTES 72
81-73	GENERAL CONSTRUCTION NOTES 73
81-74	GENERAL CONSTRUCTION NOTES 74
81-75	GENERAL CONSTRUCTION NOTES 75
81-76	GENERAL CONSTRUCTION NOTES 76
81-77	GENERAL CONSTRUCTION NOTES 77
81-78	GENERAL CONSTRUCTION NOTES 78
81-79	GENERAL CONSTRUCTION NOTES 79
81-80	GENERAL CONSTRUCTION NOTES 80
81-81	GENERAL CONSTRUCTION NOTES 81
81-82	GENERAL CONSTRUCTION NOTES 82
81-83	GENERAL CONSTRUCTION NOTES 83
81-84	GENERAL CONSTRUCTION NOTES 84
81-85	GENERAL CONSTRUCTION NOTES 85
81-86	GENERAL CONSTRUCTION NOTES 86
81-87	GENERAL CONSTRUCTION NOTES 87
81-88	GENERAL CONSTRUCTION NOTES 88
81-89	GENERAL CONSTRUCTION NOTES 89
81-90	GENERAL CONSTRUCTION NOTES 90
81-91	GENERAL CONSTRUCTION NOTES 91
81-92	GENERAL CONSTRUCTION NOTES 92
81-93	GENERAL CONSTRUCTION NOTES 93
81-94	GENERAL CONSTRUCTION NOTES 94
81-95	GENERAL CONSTRUCTION NOTES 95
81-96	GENERAL CONSTRUCTION NOTES 96
81-97	GENERAL CONSTRUCTION NOTES 97
81-98	GENERAL CONSTRUCTION NOTES 98
81-99	GENERAL CONSTRUCTION NOTES 99
81-100	GENERAL CONSTRUCTION NOTES 100

SITE PLAN

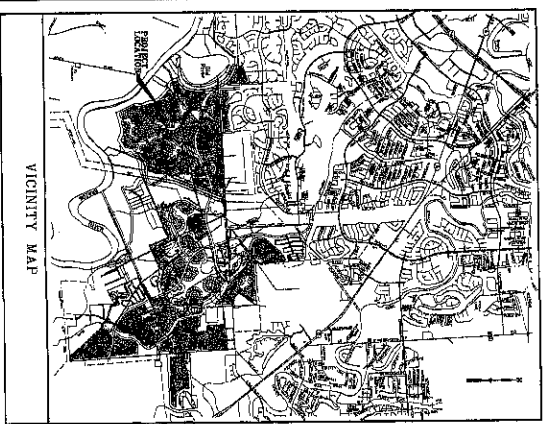
FOR

WATER, SEWER, DRAINAGE & PAVING IMPROVEMENTS FOR RIVERSTONE

AVALON SOUTH CENTRAL PARK

FORT BEND COUNTY MUD NO. 128

FORT BEND COUNTY, TEXAS



Costello
 Engineering and Surveying
 8980 Richmond Avenue, Suite 450
 Houston, Texas 77042
 (713) 783-7788 (713) 783-8880 Fax

DATE: MAY 2006
 TEXAS PE BOARD #198
 REGISTRATION No. 880



APPROVAL BY THE CITY OF SUGAR LAND WILL BE DENIED IF CONSTRUCTION HAS NOT BEGUN WITHIN ONE YEAR OF APPROVAL. CONTRACTOR SHALL NOTIFY THE CITY OF SUGAR LAND AT LEAST 48 HOURS PRIOR TO COMMENCEMENT OF WORK. NO CONSTRUCTION SHALL BEGUN UNTIL COVER SHEET IS SIGNED.

CITY OF SUGAR LAND
 APPROVED: _____
 DATE: _____

FORT BEND COUNTY
 ENGINEER: _____
 DATE: _____

THESE SIGNATURES ARE VOID IF CONSTRUCTION HAS NOT COMMENCED IN ONE YEAR FROM DATE OF APPROVAL.

APPROVED: _____ DEVELOPMENT COORDINATOR
 DATE: _____

FORT BEND COUNTY THE JURISDICTION
 APPROVED
 RESUBMIT
 DATE: _____

CONTRACT NUMBER: _____
 CITY OF SUGAR LAND - ENGINEERING DEPT. 281-279-2788
 FORT BEND COUNTY MUD No. 128 - OPERATOR - SI ENGINEERING, INC. 832-498-1888
 FORT BEND COUNTY MUD No. 128 - ENGINEER - COSTELLO, INC. 713-783-7788
 FORT BEND COUNTY DRAINAGE DISTRICT 281-242-2853

INDEX OF DRAWINGS

SHEET NO.	DESCRIPTION
1	COVER SHEET
2	CONTRACTOR NOTES
3	MAINTENANCE SCHEDULE
4	PROPOSED MAINTENANCE SCHEDULE AND
5	STORM SEWER LAYOUT
6	SEWER AND CALCULATIONS
7	SEWER AND CALCULATIONS
8	POLLUTION PREVENTION PLAN
9	CONCRETE PAVEMENT CONSTRUCTION DETAILS
10	CONCRETE PAVEMENT CONSTRUCTION DETAILS
11	CONCRETE PAVEMENT CONSTRUCTION DETAILS
12	CONCRETE PAVEMENT CONSTRUCTION DETAILS
13	CONCRETE PAVEMENT CONSTRUCTION DETAILS
14	CONCRETE PAVEMENT CONSTRUCTION DETAILS
15	CONCRETE PAVEMENT CONSTRUCTION DETAILS
16	CONCRETE PAVEMENT CONSTRUCTION DETAILS
17	CONCRETE PAVEMENT CONSTRUCTION DETAILS
18	CONCRETE PAVEMENT CONSTRUCTION DETAILS
19	CONCRETE PAVEMENT CONSTRUCTION DETAILS
20	CONCRETE PAVEMENT CONSTRUCTION DETAILS
21	CONCRETE PAVEMENT CONSTRUCTION DETAILS
22	CONCRETE PAVEMENT CONSTRUCTION DETAILS
23	CONCRETE PAVEMENT CONSTRUCTION DETAILS
24	CONCRETE PAVEMENT CONSTRUCTION DETAILS
25	CONCRETE PAVEMENT CONSTRUCTION DETAILS
26	CONCRETE PAVEMENT CONSTRUCTION DETAILS
27	CONCRETE PAVEMENT CONSTRUCTION DETAILS
28	CONCRETE PAVEMENT CONSTRUCTION DETAILS
29	CONCRETE PAVEMENT CONSTRUCTION DETAILS
30	CONCRETE PAVEMENT CONSTRUCTION DETAILS
31	CONCRETE PAVEMENT CONSTRUCTION DETAILS
32	CONCRETE PAVEMENT CONSTRUCTION DETAILS
33	CONCRETE PAVEMENT CONSTRUCTION DETAILS
34	CONCRETE PAVEMENT CONSTRUCTION DETAILS
35	CONCRETE PAVEMENT CONSTRUCTION DETAILS
36	CONCRETE PAVEMENT CONSTRUCTION DETAILS
37	CONCRETE PAVEMENT CONSTRUCTION DETAILS
38	CONCRETE PAVEMENT CONSTRUCTION DETAILS
39	CONCRETE PAVEMENT CONSTRUCTION DETAILS
40	CONCRETE PAVEMENT CONSTRUCTION DETAILS
41	CONCRETE PAVEMENT CONSTRUCTION DETAILS
42	CONCRETE PAVEMENT CONSTRUCTION DETAILS
43	CONCRETE PAVEMENT CONSTRUCTION DETAILS
44	CONCRETE PAVEMENT CONSTRUCTION DETAILS
45	CONCRETE PAVEMENT CONSTRUCTION DETAILS
46	CONCRETE PAVEMENT CONSTRUCTION DETAILS
47	CONCRETE PAVEMENT CONSTRUCTION DETAILS
48	CONCRETE PAVEMENT CONSTRUCTION DETAILS
49	CONCRETE PAVEMENT CONSTRUCTION DETAILS
50	CONCRETE PAVEMENT CONSTRUCTION DETAILS
51	CONCRETE PAVEMENT CONSTRUCTION DETAILS
52	CONCRETE PAVEMENT CONSTRUCTION DETAILS
53	CONCRETE PAVEMENT CONSTRUCTION DETAILS
54	CONCRETE PAVEMENT CONSTRUCTION DETAILS
55	CONCRETE PAVEMENT CONSTRUCTION DETAILS
56	CONCRETE PAVEMENT CONSTRUCTION DETAILS
57	CONCRETE PAVEMENT CONSTRUCTION DETAILS
58	CONCRETE PAVEMENT CONSTRUCTION DETAILS
59	CONCRETE PAVEMENT CONSTRUCTION DETAILS
60	CONCRETE PAVEMENT CONSTRUCTION DETAILS
61	CONCRETE PAVEMENT CONSTRUCTION DETAILS
62	CONCRETE PAVEMENT CONSTRUCTION DETAILS
63	CONCRETE PAVEMENT CONSTRUCTION DETAILS
64	CONCRETE PAVEMENT CONSTRUCTION DETAILS
65	CONCRETE PAVEMENT CONSTRUCTION DETAILS
66	CONCRETE PAVEMENT CONSTRUCTION DETAILS
67	CONCRETE PAVEMENT CONSTRUCTION DETAILS
68	CONCRETE PAVEMENT CONSTRUCTION DETAILS
69	CONCRETE PAVEMENT CONSTRUCTION DETAILS
70	CONCRETE PAVEMENT CONSTRUCTION DETAILS
71	CONCRETE PAVEMENT CONSTRUCTION DETAILS
72	CONCRETE PAVEMENT CONSTRUCTION DETAILS
73	CONCRETE PAVEMENT CONSTRUCTION DETAILS
74	CONCRETE PAVEMENT CONSTRUCTION DETAILS
75	CONCRETE PAVEMENT CONSTRUCTION DETAILS
76	CONCRETE PAVEMENT CONSTRUCTION DETAILS
77	CONCRETE PAVEMENT CONSTRUCTION DETAILS
78	CONCRETE PAVEMENT CONSTRUCTION DETAILS
79	CONCRETE PAVEMENT CONSTRUCTION DETAILS
80	CONCRETE PAVEMENT CONSTRUCTION DETAILS
81	CONCRETE PAVEMENT CONSTRUCTION DETAILS
82	CONCRETE PAVEMENT CONSTRUCTION DETAILS
83	CONCRETE PAVEMENT CONSTRUCTION DETAILS
84	CONCRETE PAVEMENT CONSTRUCTION DETAILS
85	CONCRETE PAVEMENT CONSTRUCTION DETAILS
86	CONCRETE PAVEMENT CONSTRUCTION DETAILS
87	CONCRETE PAVEMENT CONSTRUCTION DETAILS
88	CONCRETE PAVEMENT CONSTRUCTION DETAILS
89	CONCRETE PAVEMENT CONSTRUCTION DETAILS
90	CONCRETE PAVEMENT CONSTRUCTION DETAILS
91	CONCRETE PAVEMENT CONSTRUCTION DETAILS
92	CONCRETE PAVEMENT CONSTRUCTION DETAILS
93	CONCRETE PAVEMENT CONSTRUCTION DETAILS
94	CONCRETE PAVEMENT CONSTRUCTION DETAILS
95	CONCRETE PAVEMENT CONSTRUCTION DETAILS
96	CONCRETE PAVEMENT CONSTRUCTION DETAILS
97	CONCRETE PAVEMENT CONSTRUCTION DETAILS
98	CONCRETE PAVEMENT CONSTRUCTION DETAILS
99	CONCRETE PAVEMENT CONSTRUCTION DETAILS
100	CONCRETE PAVEMENT CONSTRUCTION DETAILS

GENERAL NOTES

- 1. THE CONTRACTOR SHALL MAINTAIN ACCESS TO ALL EXISTING UTILITIES AND SHALL BE RESPONSIBLE FOR THE PROTECTION OF ALL UTILITIES...
2. THE CONTRACTOR SHALL MAINTAIN ACCESS TO ALL EXISTING UTILITIES AND SHALL BE RESPONSIBLE FOR THE PROTECTION OF ALL UTILITIES...
3. THE CONTRACTOR SHALL MAINTAIN ACCESS TO ALL EXISTING UTILITIES AND SHALL BE RESPONSIBLE FOR THE PROTECTION OF ALL UTILITIES...

- 4. THE CONTRACTOR SHALL MAINTAIN ACCESS TO ALL EXISTING UTILITIES AND SHALL BE RESPONSIBLE FOR THE PROTECTION OF ALL UTILITIES...
5. THE CONTRACTOR SHALL MAINTAIN ACCESS TO ALL EXISTING UTILITIES AND SHALL BE RESPONSIBLE FOR THE PROTECTION OF ALL UTILITIES...
6. THE CONTRACTOR SHALL MAINTAIN ACCESS TO ALL EXISTING UTILITIES AND SHALL BE RESPONSIBLE FOR THE PROTECTION OF ALL UTILITIES...

Table with 2 columns: Item No., Description. Contains a list of items and their corresponding descriptions.

- 7. THE CONTRACTOR SHALL MAINTAIN ACCESS TO ALL EXISTING UTILITIES AND SHALL BE RESPONSIBLE FOR THE PROTECTION OF ALL UTILITIES...
8. THE CONTRACTOR SHALL MAINTAIN ACCESS TO ALL EXISTING UTILITIES AND SHALL BE RESPONSIBLE FOR THE PROTECTION OF ALL UTILITIES...
9. THE CONTRACTOR SHALL MAINTAIN ACCESS TO ALL EXISTING UTILITIES AND SHALL BE RESPONSIBLE FOR THE PROTECTION OF ALL UTILITIES...

- 10. THE CONTRACTOR SHALL MAINTAIN ACCESS TO ALL EXISTING UTILITIES AND SHALL BE RESPONSIBLE FOR THE PROTECTION OF ALL UTILITIES...
11. THE CONTRACTOR SHALL MAINTAIN ACCESS TO ALL EXISTING UTILITIES AND SHALL BE RESPONSIBLE FOR THE PROTECTION OF ALL UTILITIES...
12. THE CONTRACTOR SHALL MAINTAIN ACCESS TO ALL EXISTING UTILITIES AND SHALL BE RESPONSIBLE FOR THE PROTECTION OF ALL UTILITIES...

AVALLON SOUTH CENTRAL PARK CONSTRUCTION NOTES. Includes a title block with project name, sheet number (2 of 10), and a signature block for the engineer.

WINDSTREAM COMMUNICATIONS...
DESIGNED BY:
CHECKED BY:
DATE:

CAUTION: UNDERGROUND GAS FACILITIES...
THE CONTRACTOR SHALL BE RESPONSIBLE FOR THE PROTECTION OF ALL UTILITIES...



Engineering and Surveying...
9900 Richmond Avenue, Suite 400 N...
Houston, Texas 77042...
(713) 788-7788 (713) 788-8860, Fax...
TBE-FRM REG. NO. 280...
TBE-FRM REG. NO. 100486

AVALLON SOUTH CENTRAL PARK CONSTRUCTION NOTES

Professional Engineer Seal for the State of Texas, No. 100486, dated 10/10/06.

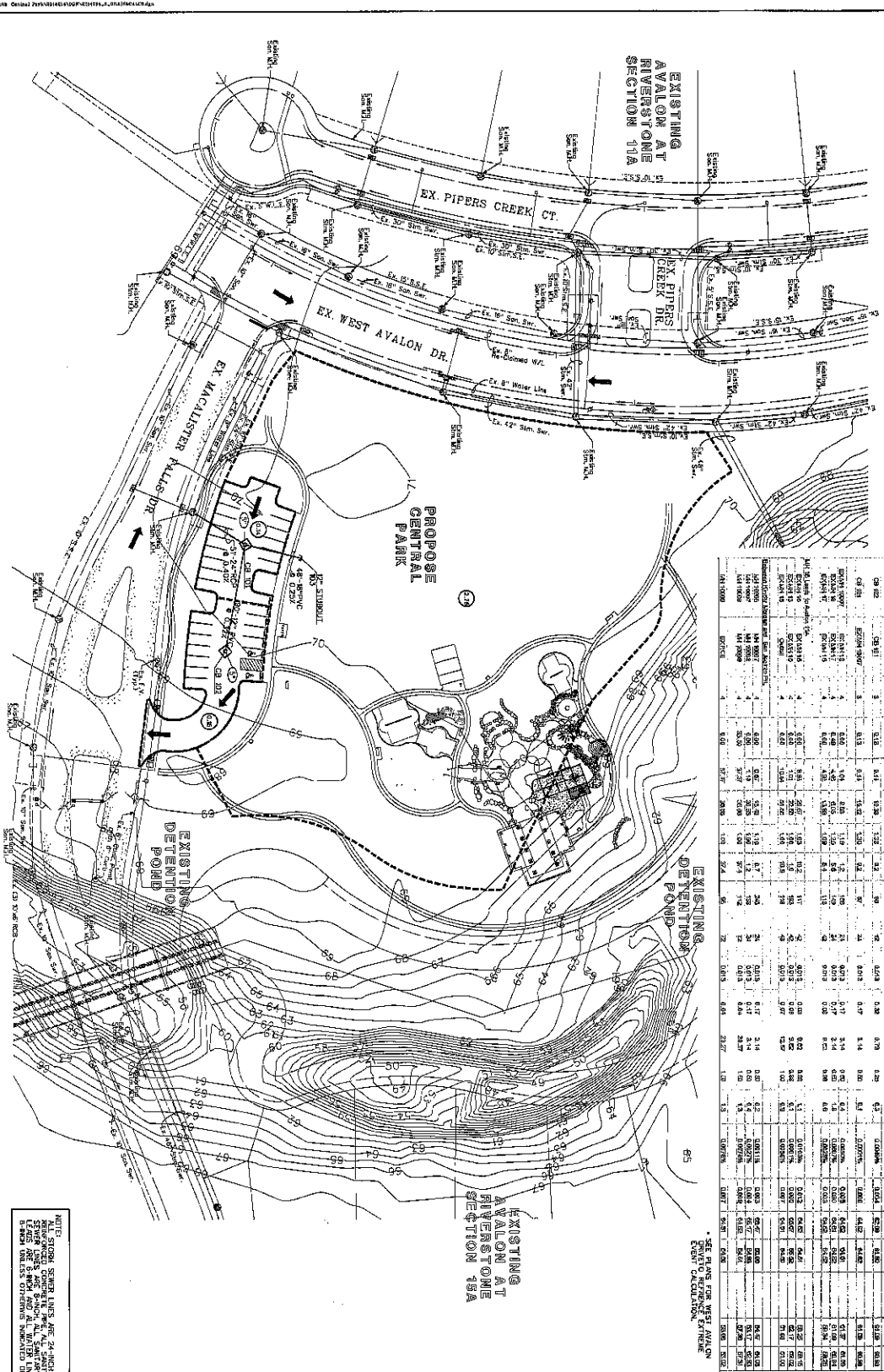
DESIGNED BY:	DESIGN CHECKED BY:
DRAWN BY:	CADD CHECKED BY:
DATE:	DATE:
PROJECT NO.:	PROJECT NO.:
REVISION:	REVISION:

Costello

Engineering and Surveying
 8990 Richmond Avenue, Suite 450 N
 Houston, Texas 77042
 (713) 782-7788 (713) 782-5801 Fax
 TIPS@COSTELLO.COM REG. NO. 102488

AVALON SOUTH CENTRAL PARK
 DRAINAGE AND CALCULATIONS

PROJECT NO. 2011-04-1082
 SHEET 5 OF 10 SHEETS
 DATE: 10/11/11



STATION	INVERT	PIPE DIA.	PIPE SLOPE	PIPE LENGTH	PIPE AREA	PIPE VOLUME	PIPE WEIGHT	PIPE COST	MANHOLE DIA.	MANHOLE AREA	MANHOLE VOLUME	MANHOLE WEIGHT	MANHOLE COST
1+00	1.00	18"	0.01	100	1.13	113	113	113	36"	10.17	1017	1017	1017
2+00	2.00	18"	0.01	100	1.13	113	113	113	36"	10.17	1017	1017	1017
3+00	3.00	18"	0.01	100	1.13	113	113	113	36"	10.17	1017	1017	1017
4+00	4.00	18"	0.01	100	1.13	113	113	113	36"	10.17	1017	1017	1017
5+00	5.00	18"	0.01	100	1.13	113	113	113	36"	10.17	1017	1017	1017
6+00	6.00	18"	0.01	100	1.13	113	113	113	36"	10.17	1017	1017	1017
7+00	7.00	18"	0.01	100	1.13	113	113	113	36"	10.17	1017	1017	1017
8+00	8.00	18"	0.01	100	1.13	113	113	113	36"	10.17	1017	1017	1017
9+00	9.00	18"	0.01	100	1.13	113	113	113	36"	10.17	1017	1017	1017
10+00	10.00	18"	0.01	100	1.13	113	113	113	36"	10.17	1017	1017	1017

LEGEND

- DRAINAGE BOUNDARY
- PROPOSED STORM FOR CONCRETE PIPE
- AVERAGE
- MAX. FLOODING LEVEL
- ENGINEERING CONTOURS
- SHEET FLOW
- EXISTING LINE SIZE
- PROPOSED LINE SIZE
- MANHOLE
- MANHOLE

NOTE: FROM STREETS LINES ARE CHANGED TO REFLECT THE PROPOSED DRAINAGE LAYOUT. ALL CHANGES ARE SHOWN IN RED. ALL OTHER LINES ARE IN BLACK UNLESS OTHERWISE INDICATED ON THE PLANS.

CONTROL ELEVATIONS:
 ELEVATIONS USED FOR BEINGING CONTROL LINES ARE BASED ON NVD 858 DATA 973 ADJUSTMENT. THE 10' TYPICAL AN CORNER AT SOUTH END OF EX. WEST AVALON DR IS THE CONTROL POINT FOR THE DRAINAGE. TO CONVERT TO NVD 858 DATA 973 ADJUSTMENT, SUBTRACT 1.25 AS ESTABLISHED BY CITY OF SLOAN LAND DEPARTMENT FROM THE CONTROL POINT AND SLOAN RIVER ROAD DEPARTMENT FROM SLOAN ROAD AND SLOAN RIVER ROAD DEPARTMENT FROM SLOAN ROAD.

SCALE: 1" = 40'

DATE: 10/11/11

PROJECT NO.: 2011-04-1082

SHEET: 5 OF 10 SHEETS

DESIGNED BY:	DATE:
CHECKED BY:	DATE:
DESIGNED BY:	DATE:
CHECKED BY:	DATE:
DESIGNED BY:	DATE:
CHECKED BY:	DATE:
DESIGNED BY:	DATE:
CHECKED BY:	DATE:

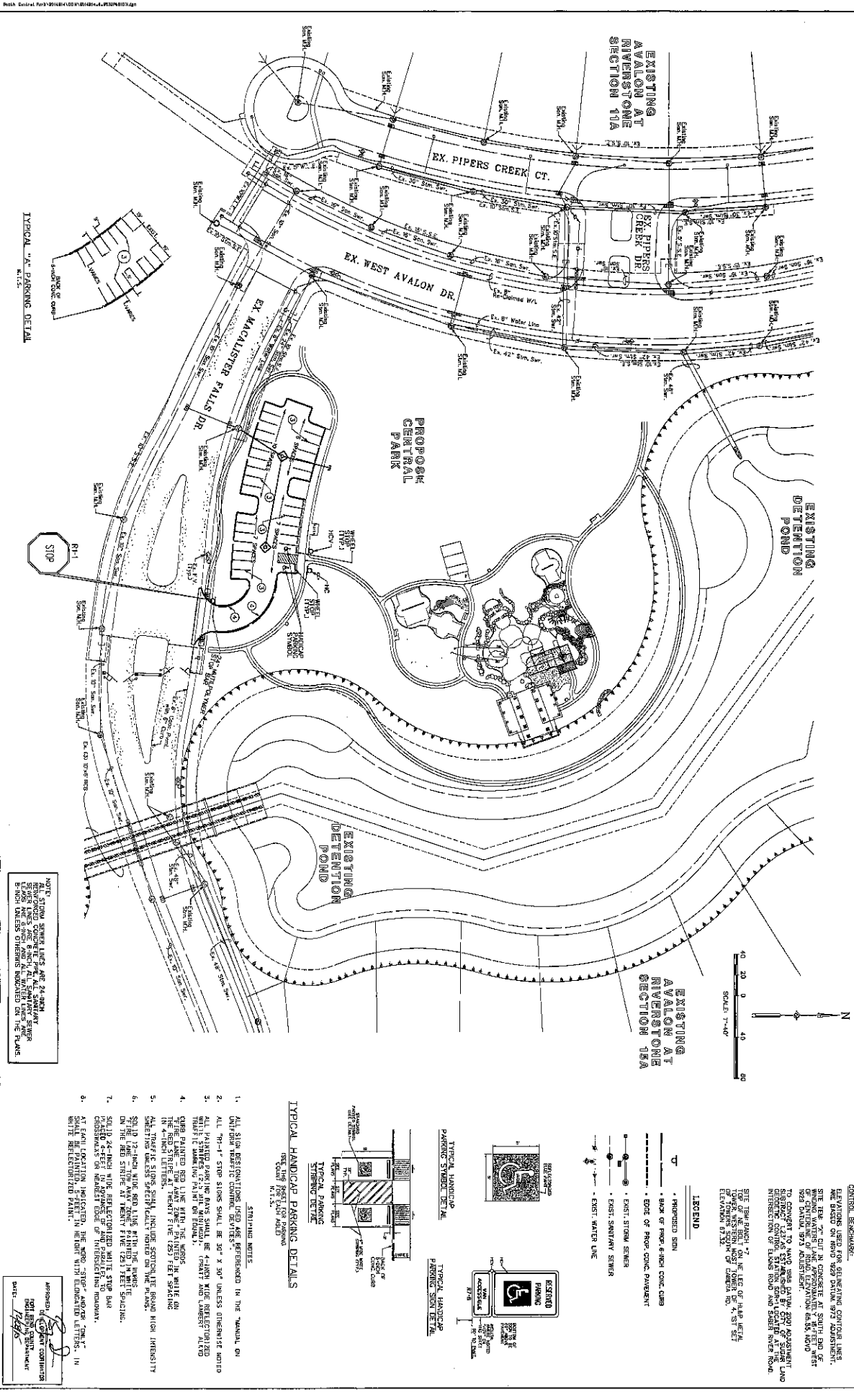
Costello

Engineering and Surveying
 9990 Richmond Avenue, Suite 450 N
 Houston, Texas 77042
 (713) 785-7788 (713) 785-5850 Fax
 TARRANT COUNTY, TEXAS
 TARRANT COUNTY, TEXAS


AVALON SOUTH CENTRAL PARK
 STRIPING AND SIGNAGE LAYOUT

6
 10
 SHEETS

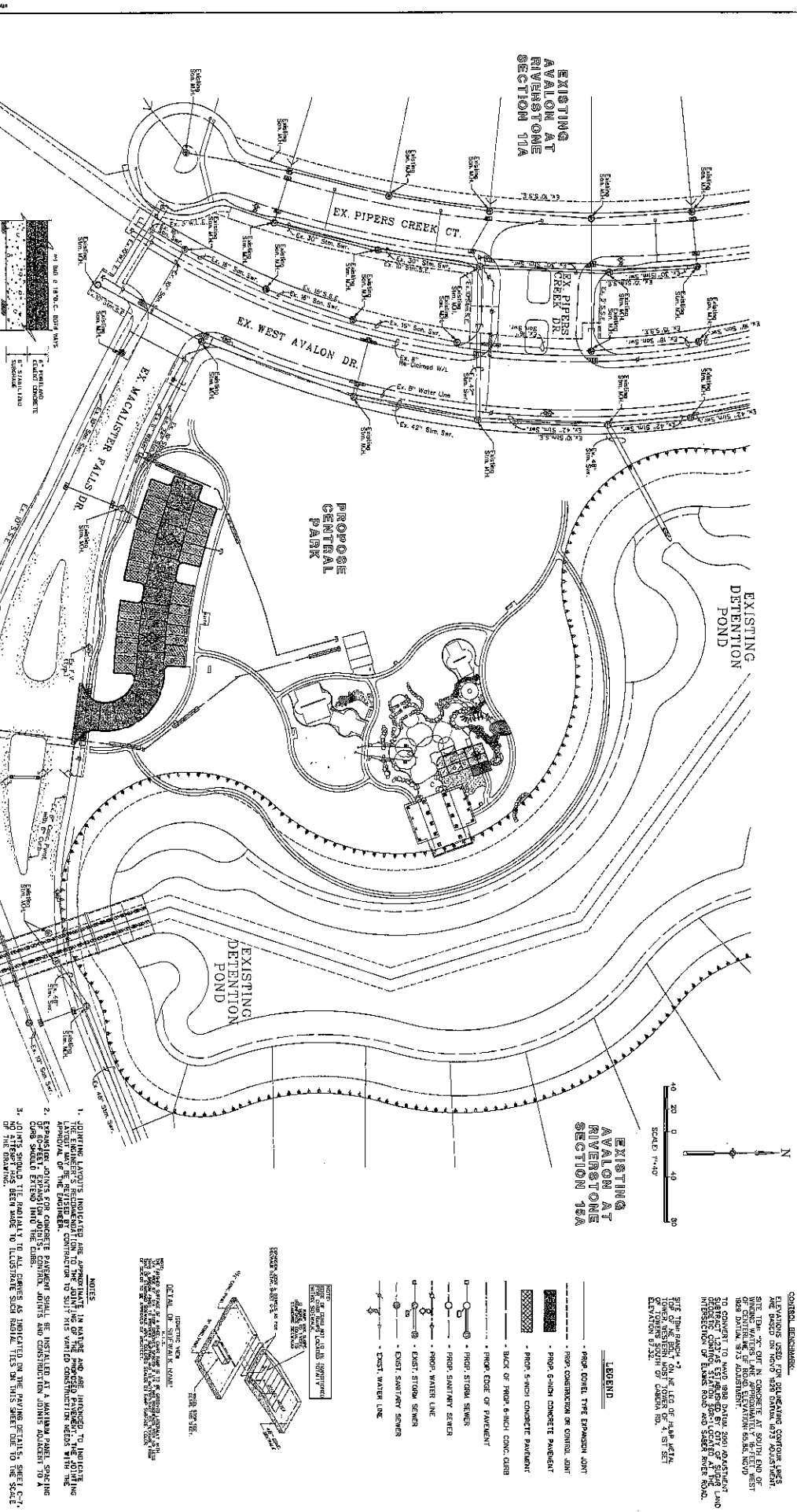
100 NO. 301-344-002



DESIGNED BY:	DESIGN CHECKED BY:
DRAWN BY:	ROAD CHECKED BY:
SURVEY CHECKED BY:	CONCRETE REVISIONS BY:
DATE:	BY:

 <p>Engineering and Surveying 9880 Richmond Avenue, Suite 440 N Houston, Texas 77042 (713) 783-7788 (713) 783-3980 Fax TBP'S FIRM REG. NO. 280 TBP'S HRM REG. NO. 100489</p>	<p>AVAYON SOUTH CENTRAL PARK CONSTRUCTION JOINT LAYOUT</p>
---	--

<p>APPROVED FOR CONSTRUCTION DATE: <i>[Signature]</i></p>	<p>SHEET 7 OF 10 SHEETS JOB NO. 2014-014-002</p>
---	--



ASPHALTIC CONCRETE PAVEMENT:

- 1. ASPHALTIC MATERIAL AND WORKMANSHIP SHALL COMPLY WITH ASTM C 33, ASTM C 131, ASTM C 138, AND TYPICAL STANDARD SPECIFICATIONS FOR CONSTRUCTION OF HIGHWAYS, STREETS AND BRIDGE DECK SLABS AND ITS LATEST REVISIONS.
2. CONSTRUCTION SHALL VERIFY DIMENSIONS AND CHECKS AND HAVE THEM CORRECTED IF NECESSARY BEFORE LAYING DOWN.
3. APPLY A PRIME COAT OF SPIRAL LIME AND HOT OIL SOLUTIONS, DO NOT APPLY TACK COAT UNTIL TACK COAT HAS SET.
4. TACK COAT SHALL COMPLY WITH CITY OF SUWAN LAKE AND TYPICAL SPECIFICATIONS.
5. DO NOT USE CRACKER ASPHALT EMULSION 16 THROUGH SPREADER.
6. DO NOT USE CRACKER ASPHALT EMULSION 16 THROUGH SPREADER.
7. DO NOT USE CRACKER ASPHALT EMULSION 16 THROUGH SPREADER.
8. DO NOT USE CRACKER ASPHALT EMULSION 16 THROUGH SPREADER.
9. DO NOT USE CRACKER ASPHALT EMULSION 16 THROUGH SPREADER.
10. DO NOT USE CRACKER ASPHALT EMULSION 16 THROUGH SPREADER.
11. DO NOT USE CRACKER ASPHALT EMULSION 16 THROUGH SPREADER.
12. DO NOT USE CRACKER ASPHALT EMULSION 16 THROUGH SPREADER.
13. DO NOT USE CRACKER ASPHALT EMULSION 16 THROUGH SPREADER.
14. DO NOT USE CRACKER ASPHALT EMULSION 16 THROUGH SPREADER.
15. DO NOT USE CRACKER ASPHALT EMULSION 16 THROUGH SPREADER.
16. DO NOT USE CRACKER ASPHALT EMULSION 16 THROUGH SPREADER.

STABILIZED CRUSHED CONCRETE:

- 1. TEST AND ANALYZES OF ACCELSITE AND BROKER MATERIALS SHALL BE FURNISHED IN ACCORDANCE WITH ASTM 1367 AND ASTM 1418.
2. ALL MATERIALS AND WORKMANSHIP SHALL COMPLY WITH TYPICAL STANDARD SPECIFICATIONS FOR CONSTRUCTION OF HIGHWAYS, STREETS AND BRIDGE DECK SLABS AND ITS LATEST REVISIONS.
3. CONSTRUCTION SHALL VERIFY DIMENSIONS AND CHECKS AND HAVE THEM CORRECTED IF NECESSARY BEFORE LAYING DOWN.
4. APPLY A PRIME COAT OF SPIRAL LIME AND HOT OIL SOLUTIONS, DO NOT APPLY TACK COAT UNTIL TACK COAT HAS SET.
5. TACK COAT SHALL COMPLY WITH CITY OF SUWAN LAKE AND TYPICAL SPECIFICATIONS.
6. DO NOT USE CRACKER ASPHALT EMULSION 16 THROUGH SPREADER.
7. DO NOT USE CRACKER ASPHALT EMULSION 16 THROUGH SPREADER.
8. DO NOT USE CRACKER ASPHALT EMULSION 16 THROUGH SPREADER.
9. DO NOT USE CRACKER ASPHALT EMULSION 16 THROUGH SPREADER.
10. DO NOT USE CRACKER ASPHALT EMULSION 16 THROUGH SPREADER.
11. DO NOT USE CRACKER ASPHALT EMULSION 16 THROUGH SPREADER.
12. DO NOT USE CRACKER ASPHALT EMULSION 16 THROUGH SPREADER.
13. DO NOT USE CRACKER ASPHALT EMULSION 16 THROUGH SPREADER.
14. DO NOT USE CRACKER ASPHALT EMULSION 16 THROUGH SPREADER.
15. DO NOT USE CRACKER ASPHALT EMULSION 16 THROUGH SPREADER.
16. DO NOT USE CRACKER ASPHALT EMULSION 16 THROUGH SPREADER.

STORM SEWER NOTES:

- 1. STORM SEWERS SHALL BE DESIGNED AND CONSTRUCTED WITH CITY OF SUWAN LAKE'S STANDARD SPECIFICATIONS AND IN ACCORDANCE WITH CITY OF SUWAN LAKE STANDARD SPECIFICATIONS.
2. ALL STORM SEWERS SHALL BE INSTALLED, BEHIND, AND ADJUSTED IN ACCORDANCE WITH CITY OF SUWAN LAKE STANDARD SPECIFICATIONS.
3. STORM SEWERS SHALL BE INSTALLED, BEHIND, AND ADJUSTED IN ACCORDANCE WITH CITY OF SUWAN LAKE STANDARD SPECIFICATIONS.
4. STORM SEWERS SHALL BE INSTALLED, BEHIND, AND ADJUSTED IN ACCORDANCE WITH CITY OF SUWAN LAKE STANDARD SPECIFICATIONS.
5. STORM SEWERS SHALL BE INSTALLED, BEHIND, AND ADJUSTED IN ACCORDANCE WITH CITY OF SUWAN LAKE STANDARD SPECIFICATIONS.
6. STORM SEWERS SHALL BE INSTALLED, BEHIND, AND ADJUSTED IN ACCORDANCE WITH CITY OF SUWAN LAKE STANDARD SPECIFICATIONS.
7. STORM SEWERS SHALL BE INSTALLED, BEHIND, AND ADJUSTED IN ACCORDANCE WITH CITY OF SUWAN LAKE STANDARD SPECIFICATIONS.
8. STORM SEWERS SHALL BE INSTALLED, BEHIND, AND ADJUSTED IN ACCORDANCE WITH CITY OF SUWAN LAKE STANDARD SPECIFICATIONS.
9. STORM SEWERS SHALL BE INSTALLED, BEHIND, AND ADJUSTED IN ACCORDANCE WITH CITY OF SUWAN LAKE STANDARD SPECIFICATIONS.
10. STORM SEWERS SHALL BE INSTALLED, BEHIND, AND ADJUSTED IN ACCORDANCE WITH CITY OF SUWAN LAKE STANDARD SPECIFICATIONS.
11. STORM SEWERS SHALL BE INSTALLED, BEHIND, AND ADJUSTED IN ACCORDANCE WITH CITY OF SUWAN LAKE STANDARD SPECIFICATIONS.
12. STORM SEWERS SHALL BE INSTALLED, BEHIND, AND ADJUSTED IN ACCORDANCE WITH CITY OF SUWAN LAKE STANDARD SPECIFICATIONS.
13. STORM SEWERS SHALL BE INSTALLED, BEHIND, AND ADJUSTED IN ACCORDANCE WITH CITY OF SUWAN LAKE STANDARD SPECIFICATIONS.
14. STORM SEWERS SHALL BE INSTALLED, BEHIND, AND ADJUSTED IN ACCORDANCE WITH CITY OF SUWAN LAKE STANDARD SPECIFICATIONS.
15. STORM SEWERS SHALL BE INSTALLED, BEHIND, AND ADJUSTED IN ACCORDANCE WITH CITY OF SUWAN LAKE STANDARD SPECIFICATIONS.
16. STORM SEWERS SHALL BE INSTALLED, BEHIND, AND ADJUSTED IN ACCORDANCE WITH CITY OF SUWAN LAKE STANDARD SPECIFICATIONS.

SANITARY SEWER NOTES:

- 1. SANITARY SEWERS SHALL BE DESIGNED AND CONSTRUCTED WITH CITY OF SUWAN LAKE'S STANDARD SPECIFICATIONS AND IN ACCORDANCE WITH CITY OF SUWAN LAKE STANDARD SPECIFICATIONS.
2. ALL SANITARY SEWERS SHALL BE INSTALLED, BEHIND, AND ADJUSTED IN ACCORDANCE WITH CITY OF SUWAN LAKE STANDARD SPECIFICATIONS.
3. SANITARY SEWERS SHALL BE INSTALLED, BEHIND, AND ADJUSTED IN ACCORDANCE WITH CITY OF SUWAN LAKE STANDARD SPECIFICATIONS.
4. SANITARY SEWERS SHALL BE INSTALLED, BEHIND, AND ADJUSTED IN ACCORDANCE WITH CITY OF SUWAN LAKE STANDARD SPECIFICATIONS.
5. SANITARY SEWERS SHALL BE INSTALLED, BEHIND, AND ADJUSTED IN ACCORDANCE WITH CITY OF SUWAN LAKE STANDARD SPECIFICATIONS.
6. SANITARY SEWERS SHALL BE INSTALLED, BEHIND, AND ADJUSTED IN ACCORDANCE WITH CITY OF SUWAN LAKE STANDARD SPECIFICATIONS.
7. SANITARY SEWERS SHALL BE INSTALLED, BEHIND, AND ADJUSTED IN ACCORDANCE WITH CITY OF SUWAN LAKE STANDARD SPECIFICATIONS.
8. SANITARY SEWERS SHALL BE INSTALLED, BEHIND, AND ADJUSTED IN ACCORDANCE WITH CITY OF SUWAN LAKE STANDARD SPECIFICATIONS.
9. SANITARY SEWERS SHALL BE INSTALLED, BEHIND, AND ADJUSTED IN ACCORDANCE WITH CITY OF SUWAN LAKE STANDARD SPECIFICATIONS.
10. SANITARY SEWERS SHALL BE INSTALLED, BEHIND, AND ADJUSTED IN ACCORDANCE WITH CITY OF SUWAN LAKE STANDARD SPECIFICATIONS.
11. SANITARY SEWERS SHALL BE INSTALLED, BEHIND, AND ADJUSTED IN ACCORDANCE WITH CITY OF SUWAN LAKE STANDARD SPECIFICATIONS.
12. SANITARY SEWERS SHALL BE INSTALLED, BEHIND, AND ADJUSTED IN ACCORDANCE WITH CITY OF SUWAN LAKE STANDARD SPECIFICATIONS.
13. SANITARY SEWERS SHALL BE INSTALLED, BEHIND, AND ADJUSTED IN ACCORDANCE WITH CITY OF SUWAN LAKE STANDARD SPECIFICATIONS.
14. SANITARY SEWERS SHALL BE INSTALLED, BEHIND, AND ADJUSTED IN ACCORDANCE WITH CITY OF SUWAN LAKE STANDARD SPECIFICATIONS.
15. SANITARY SEWERS SHALL BE INSTALLED, BEHIND, AND ADJUSTED IN ACCORDANCE WITH CITY OF SUWAN LAKE STANDARD SPECIFICATIONS.
16. SANITARY SEWERS SHALL BE INSTALLED, BEHIND, AND ADJUSTED IN ACCORDANCE WITH CITY OF SUWAN LAKE STANDARD SPECIFICATIONS.

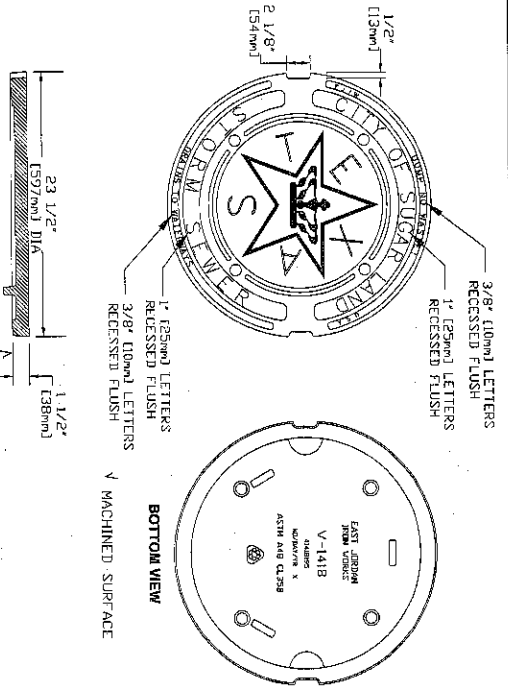
WATER DISTRIBUTION NOTES:

- 1. WATER MAINS WATER SERVICE LINES AND ASSOCIATED APPURTENANCES SHALL BE DESIGNED AND CONSTRUCTED AS PER REQUIREMENTS OF THE CITY OF SUWAN LAKE DESIGN STANDARDS AND THE TYPICAL STANDARD SPECIFICATIONS FOR CONSTRUCTION OF HIGHWAYS, STREETS AND BRIDGE DECK SLABS AND ITS LATEST REVISIONS.
2. ALL WATER MAINS WATER SERVICE LINES AND ASSOCIATED APPURTENANCES SHALL BE INSTALLED, BEHIND, AND ADJUSTED IN ACCORDANCE WITH CITY OF SUWAN LAKE STANDARD SPECIFICATIONS.
3. WATER MAINS WATER SERVICE LINES AND ASSOCIATED APPURTENANCES SHALL BE INSTALLED, BEHIND, AND ADJUSTED IN ACCORDANCE WITH CITY OF SUWAN LAKE STANDARD SPECIFICATIONS.
4. WATER MAINS WATER SERVICE LINES AND ASSOCIATED APPURTENANCES SHALL BE INSTALLED, BEHIND, AND ADJUSTED IN ACCORDANCE WITH CITY OF SUWAN LAKE STANDARD SPECIFICATIONS.
5. WATER MAINS WATER SERVICE LINES AND ASSOCIATED APPURTENANCES SHALL BE INSTALLED, BEHIND, AND ADJUSTED IN ACCORDANCE WITH CITY OF SUWAN LAKE STANDARD SPECIFICATIONS.
6. WATER MAINS WATER SERVICE LINES AND ASSOCIATED APPURTENANCES SHALL BE INSTALLED, BEHIND, AND ADJUSTED IN ACCORDANCE WITH CITY OF SUWAN LAKE STANDARD SPECIFICATIONS.
7. WATER MAINS WATER SERVICE LINES AND ASSOCIATED APPURTENANCES SHALL BE INSTALLED, BEHIND, AND ADJUSTED IN ACCORDANCE WITH CITY OF SUWAN LAKE STANDARD SPECIFICATIONS.
8. WATER MAINS WATER SERVICE LINES AND ASSOCIATED APPURTENANCES SHALL BE INSTALLED, BEHIND, AND ADJUSTED IN ACCORDANCE WITH CITY OF SUWAN LAKE STANDARD SPECIFICATIONS.
9. WATER MAINS WATER SERVICE LINES AND ASSOCIATED APPURTENANCES SHALL BE INSTALLED, BEHIND, AND ADJUSTED IN ACCORDANCE WITH CITY OF SUWAN LAKE STANDARD SPECIFICATIONS.
10. WATER MAINS WATER SERVICE LINES AND ASSOCIATED APPURTENANCES SHALL BE INSTALLED, BEHIND, AND ADJUSTED IN ACCORDANCE WITH CITY OF SUWAN LAKE STANDARD SPECIFICATIONS.
11. WATER MAINS WATER SERVICE LINES AND ASSOCIATED APPURTENANCES SHALL BE INSTALLED, BEHIND, AND ADJUSTED IN ACCORDANCE WITH CITY OF SUWAN LAKE STANDARD SPECIFICATIONS.
12. WATER MAINS WATER SERVICE LINES AND ASSOCIATED APPURTENANCES SHALL BE INSTALLED, BEHIND, AND ADJUSTED IN ACCORDANCE WITH CITY OF SUWAN LAKE STANDARD SPECIFICATIONS.
13. WATER MAINS WATER SERVICE LINES AND ASSOCIATED APPURTENANCES SHALL BE INSTALLED, BEHIND, AND ADJUSTED IN ACCORDANCE WITH CITY OF SUWAN LAKE STANDARD SPECIFICATIONS.
14. WATER MAINS WATER SERVICE LINES AND ASSOCIATED APPURTENANCES SHALL BE INSTALLED, BEHIND, AND ADJUSTED IN ACCORDANCE WITH CITY OF SUWAN LAKE STANDARD SPECIFICATIONS.
15. WATER MAINS WATER SERVICE LINES AND ASSOCIATED APPURTENANCES SHALL BE INSTALLED, BEHIND, AND ADJUSTED IN ACCORDANCE WITH CITY OF SUWAN LAKE STANDARD SPECIFICATIONS.
16. WATER MAINS WATER SERVICE LINES AND ASSOCIATED APPURTENANCES SHALL BE INSTALLED, BEHIND, AND ADJUSTED IN ACCORDANCE WITH CITY OF SUWAN LAKE STANDARD SPECIFICATIONS.

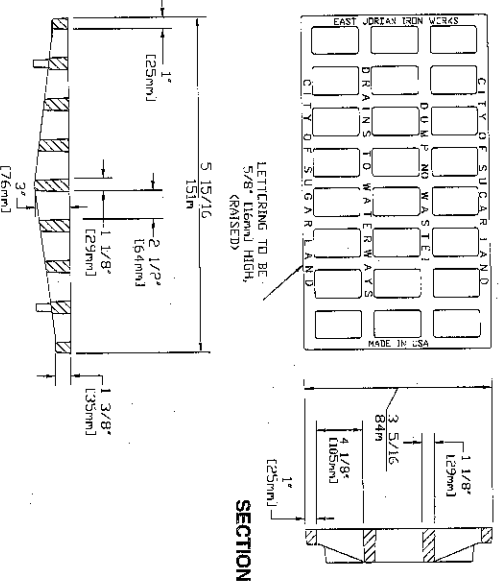
CAD FILE PATH:
PLOT DATE:

City of Suwan Lake, Texas logo and official stamps. Includes 'City of Suwan Lake, Texas' logo, 'City Engineer' stamp, and 'City Clerk' stamp. Text includes 'CONSTRUCTION PLANS FOR: AYALON SOUTH CENTRAL PARK' and 'GENERAL CONSTRUCTION NOTES B'.

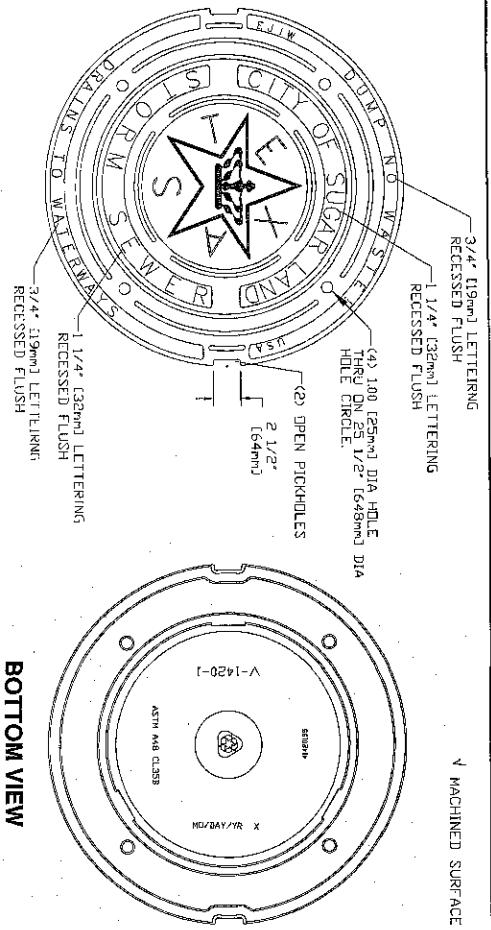
1-14-04



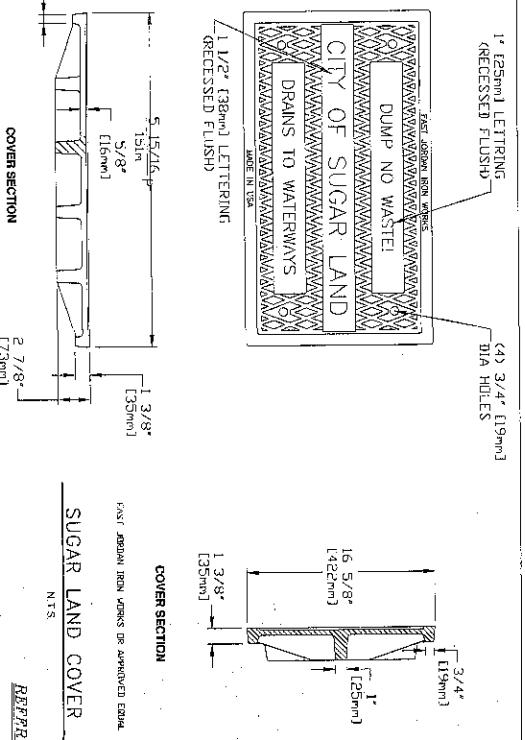
COVER SECTION
NOTE: 24" MANHOLE COVERS TO BE USED ON INLET'S ONLY.
24" MANHOLE COVER
N.T.S.
EAST JORDAN IRON WORKS OR APPROVED EQUAL
SL-DR-05



SECTION
EAST JORDAN IRON WORKS OR APPROVED EQUAL
N.T.S.
CATCH BASIN GRATE
SL-DR-07



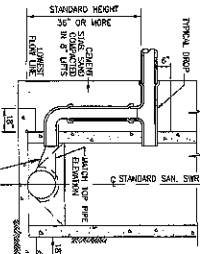
COVER SECTION
NOTE: 32" MANHOLE COVERS TO BE USED ON ALL STEEP SEWER MANHOLES.
32" MANHOLE COVER
N.T.S.
EAST JORDAN IRON WORKS OR APPROVED EQUAL
SL-DR-06



COVER SECTION
EAST JORDAN IRON WORKS OR APPROVED EQUAL
N.T.S.
SUGAR LAND COVER
SL-DR-08

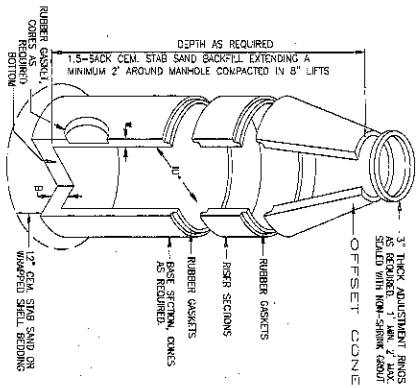
REPR. TO:
1. GENERAL NOTES, C.S. &
CONCRETE NOTES;
2. STORM SEWER NOTES

CITY OF SUGAR LAND, TEXAS ENGINEERING DEPARTMENT CONSTRUCTION PLANS LOG	DATE: 11/15/07 DRAWN BY: Dale S. Baker CHECKED BY: Dale S. Baker SHEET OF
AMALON SOUTH CENTRAL PARK STORM SEWER MANHOLE CONSTRUCTION DETAILS	SL-04



STANDARD DROP DETAIL
(SEE C.S.S. NOTES)

SL-SS-05

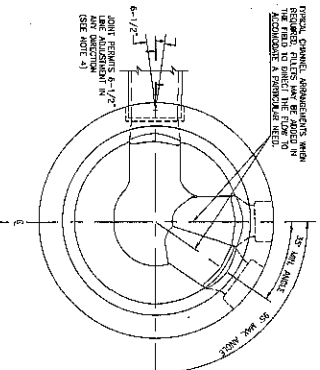


3\"/>

RECOMMENDATION: STRUCTURAL REINFORCEMENT CONFORMING TO C.I. CEMENTS: CEMENTS ARE TO BE USED IN ACCORDANCE WITH CLASS 30.

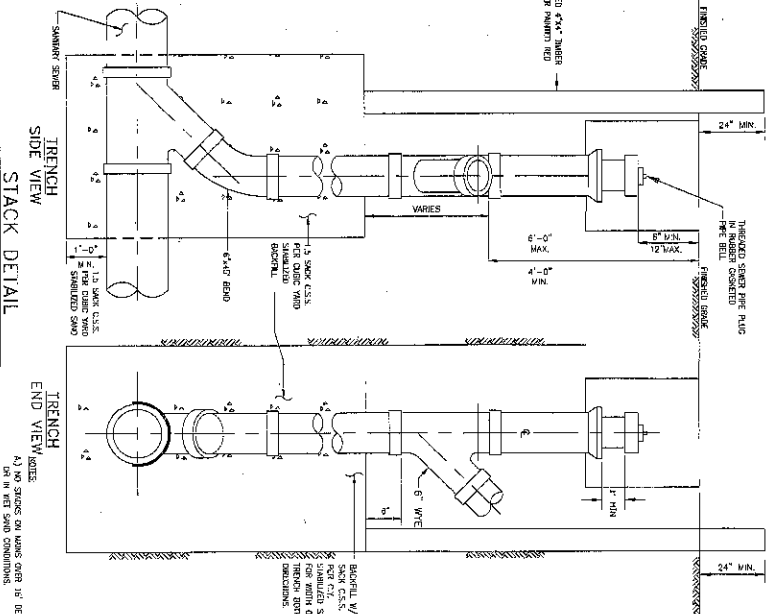
- NOTES:
1. ALL JOINTS SHALL BE SEALED WITH APPROVED RUBBER GASKET
 2. CONCRETE TO BE FINISHED ON TOP SURFACE OF MANHOLE
 3. PRE-CAST MANHOLE SHALL BE IN COMPLIANCE WITH APPROVED PRODUCT LIST
 4. ALL JOINTS SHALL BE SEALED WITH APPROVED RUBBER GASKET
 5. ALL JOINTS SHALL BE SEALED WITH APPROVED RUBBER GASKET
 6. REFER TO SANITARY MANHOLE LIDS, C.S.S. NOTES, MODIFIED BEDDING DETAILS AND NOTES.

PRECAST SANITARY MANHOLE
N.T.S.
SL-SS-03



PIPING CONNECTIONS DETAIL
(SEE C.S.S. NOTES)

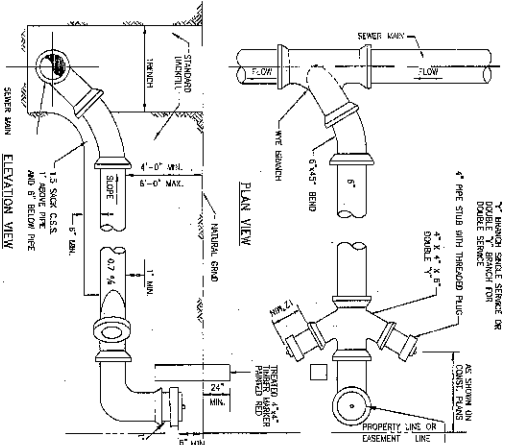
SL-SS-05



TRENCH SIDE VIEW
TRENCH END VIEW
N.T.S.
SL-SS-04

NOTES:

1. CONNECTIONS SHALL CONFORM TO CITY OF ST. LOUIS ENGINEERING DEPARTMENT AT (314) 278-2700 IF NOT SHOWN ON OTHER UNIFORM SOIL CONDITIONS.
2. MINIMUM 2\"/>
3. SANITARY SEWER MANHOLES SHALL BE CONSTRUCTED A MINIMUM OF FOUR FEET FROM ANY EXISTING FOUNDATION OR STRUCTURE. THE MINIMUM CLEARANCE FROM ANY EXISTING FOUNDATION OR STRUCTURE SHALL BE MAINTAINED THROUGHOUT THE ENTIRE DEPTH OF THE MANHOLE.
4. ALL SUCH MANHOLE COVERS SHALL HAVE THE CITY OF SAINT LOUIS MANHOLE COVER DESIGNATION AND SHALL BE APPROVED BY THE CITY OF SAINT LOUIS.
5. MANHOLE RINGS SHALL BE APPROVED BY THE CITY OF SAINT LOUIS.
6. CONNECTIONS SHALL ADJUST FOR SETTLEMENT TO MAINTAIN A MINIMUM OF FOUR FEET CLEARANCE FROM ANY EXISTING FOUNDATION OR STRUCTURE. THE MINIMUM CLEARANCE FROM ANY EXISTING FOUNDATION OR STRUCTURE SHALL BE MAINTAINED THROUGHOUT THE ENTIRE DEPTH OF THE MANHOLE.
7. CONNECTIONS TO EXISTING AND/OR NEW SANITARY SEWER MANHOLES SHALL BE MADE IN ACCORDANCE WITH THE CITY OF SAINT LOUIS ENGINEERING DEPARTMENT AT (314) 278-2700.
8. BEDDING AND BACKFILL OF SANITARY SEWER PIPING AND MANHOLES SHALL BE IN ACCORDANCE WITH CITY OF SAINT LOUIS ENGINEERING DEPARTMENT AT (314) 278-2700.
9. SANITARY SEWER CONNECTIONS SHALL BE MADE IN ACCORDANCE WITH THE CITY OF SAINT LOUIS ENGINEERING DEPARTMENT AT (314) 278-2700.
10. SANITARY SEWER SERVICE LINES SHALL BE EXTENDED TO THE POINT OF CONNECTION WITH THE SANITARY SEWER MAIN.
11. EACH SANITARY SEWER SERVICE LINE SHALL BE PLACED WITH THE SERVICE LINE AND SHALL BE EXTENDED TO THE POINT OF CONNECTION WITH THE SANITARY SEWER MAIN.
12. CONNECTIONS SHALL BE RECONSTRUCTED FOR SERVICE LINE LOCATION OF ALL EXISTING SANITARY SEWER SERVICE LINES.
13. CONSTRUCTION SHALL BE IN ACCORDANCE WITH THE CITY OF SAINT LOUIS ENGINEERING DEPARTMENT AT (314) 278-2700.
14. C.S.S. 1\"/>



SANITARY SEWER SERVICE CONNECTION
N.T.S.

SL-SS-06

APPROVED BY: [Signature]

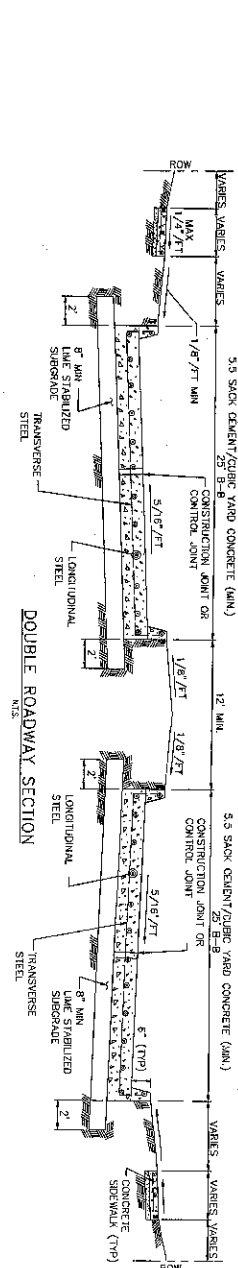
CITY OF SAINT LOUIS, MISSOURI

CONSTRUCTION DEPARTMENT

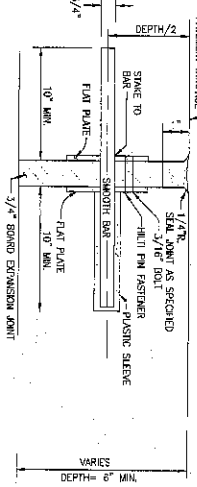
AVAYON SOUTH CENTRAL PARK

SANITARY SEWER CONSTRUCTION DETAILS

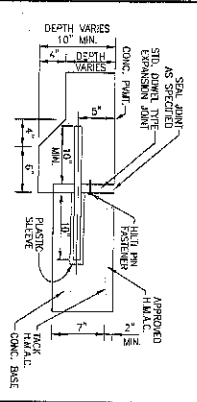
SL-14



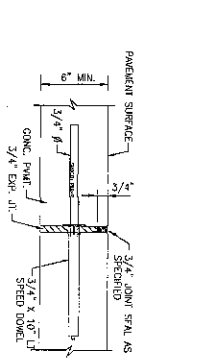
SL-ST-01



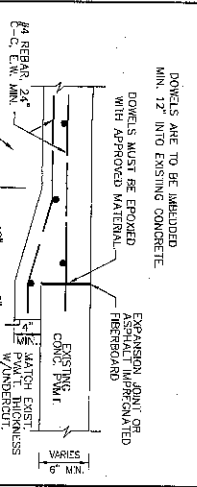
SL-ST-03



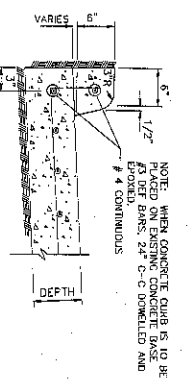
SL-ST-06



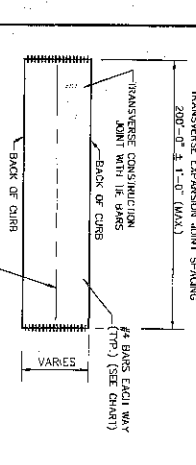
SL-ST-08



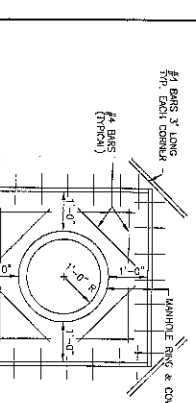
SL-ST-09



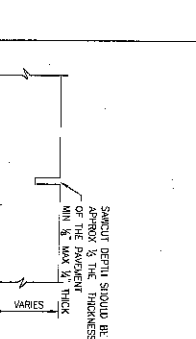
SL-ST-04



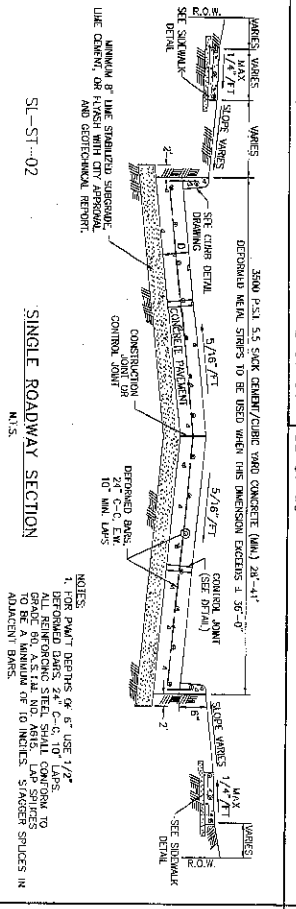
SL-ST-05



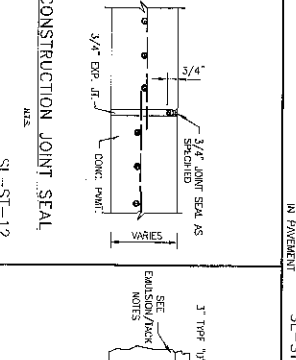
SL-ST-10



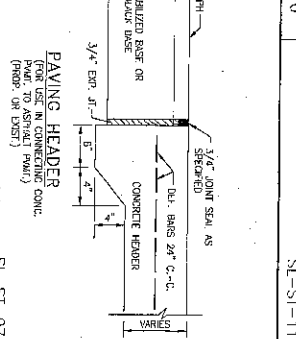
SL-ST-11



SL-ST-02



SL-ST-12



SL-ST-07

- CONSTRUCTION NOTES:**
1. 8 INCH, 5.5 SACK GEM TYPE VARD CONCRETE, 5500 PSI REINFORCED CONCRETE WITH #4 BARS 24 INCHES C-C. EX IS THE MINIMUM ACCEPTABLE PAVEMENT CONSTRUCTION FOR LOCAL STREETS.
 2. 7 INCH, 5.5 SACK GEM TYPE VARD CONCRETE, 5500 PSI REINFORCED CONCRETE WITH #4 BARS 18 INCHES C-C. IS THE MINIMUM ACCEPTABLE PAVEMENT CONSTRUCTION FOR COLLECTOR STREETS.
 3. 6 INCH, 5.5 SACK GEM TYPE VARD CONCRETE, 5500 PSI REINFORCED CONCRETE WITH #4 BARS 18 INCHES C-C. IS THE MINIMUM ACCEPTABLE PAVEMENT CONSTRUCTION FOR LOCAL STREETS.
 4. ALL REINFORCING STEEL SHALL BE PLACED IN THE MIDDLE OF THE SLAB.
 5. REINFORCING STEEL SHALL BE PLACED IN THE MIDDLE OF THE SLAB.
 6. REINFORCING STEEL SHALL BE PLACED IN THE MIDDLE OF THE SLAB.
 7. REINFORCING STEEL SHALL BE PLACED IN THE MIDDLE OF THE SLAB.
 8. STREETS WITH EQUAL OR GREATER WIDTHS SHALL BE PLACED IN THE MIDDLE OF THE SLAB.
 9. REFER TO SPECIFICATIONS, C.E.S. AND PLANNING NOTES.

SL-ST-12

CITY OF SUGAR LAND, TEXAS
ENGINEERING DEPARTMENT

CONCRETE PAVEMENT CONSTRUCTION DETAILS

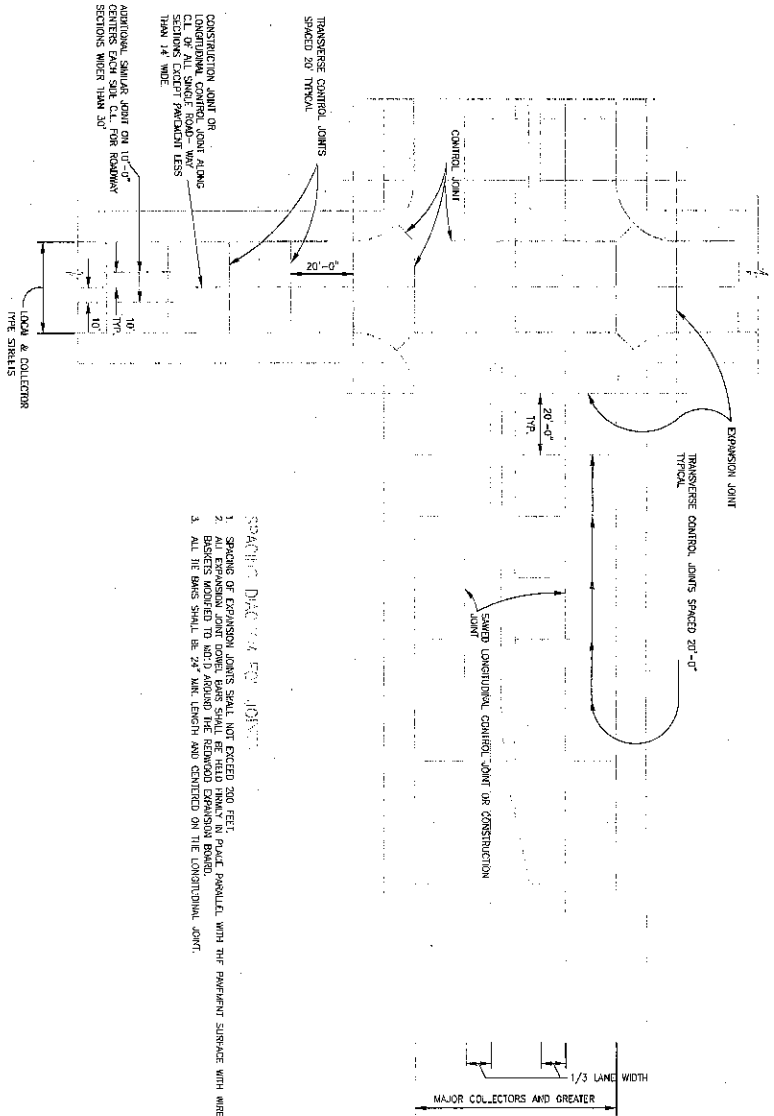
AVALON SOUTH CENTRAL PARK

DATE: 11/15/2011
DRAWN BY: [Signature]
CHECKED BY: [Signature]

SCALE: AS SHOWN



PROJECT NO: [Blank]

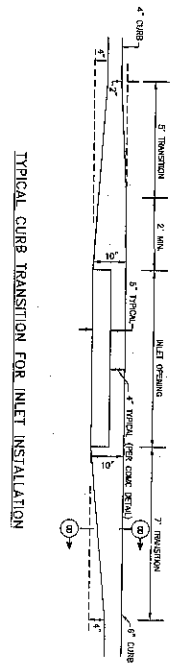
SHEET NO: [Blank] OF [Blank]



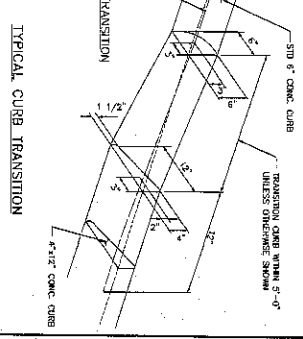
- SPACING OF EXPANSION JOINTS**
1. SPACING OF EXPANSION JOINTS SHALL NOT EXCEED 300 FEET.
 2. ALL EXPANSION JOINT DOWN BARS SHALL BE HELD IN PLACE PARALLEL WITH THE PAVEMENT SURFACE WITH WIRE BRACES ATTACHED TO EACH BAR AND THE REINFORCING BARS.
 3. ALL THE BARS SHALL BE 5/8" DIA. TENSILE AND CENTERED ON THE LONGITUDINAL JOINT.

1/2" x 1/2" x 1/2"

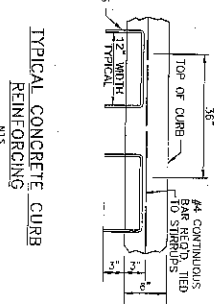
 <p>CITY OF SUGAR LAND, TEXAS ENGINEERING DEPARTMENT</p>		 <p>DAVE STRICK Professional Engineer</p>
<p>CONSTRUCTION BEANS, EBBE AVALON SOUTH CENTRAL PARK CONCRETE REINFORCEMENT CONSTRUCTION DETAILS</p>		<p>NO. 101 REVISED DATE: 08/11/10 PAGE: 22</p>
<p>SL-22</p>		<p>SHEET OF</p>



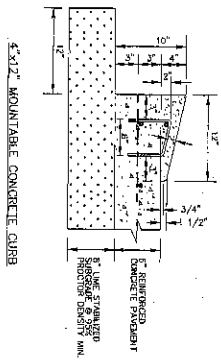
SL-ST-13



SL-ST-15

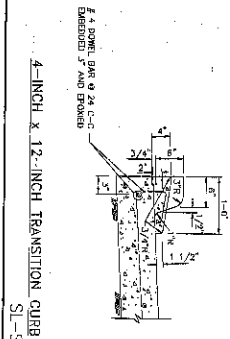


SL-ST-16



SL-ST-17

- NOTES:
- 1) SEE 06' APPROVED STANDARD SPEC. 0801.02B, 0801.02C & 4\"/>
 - 2) ALL CURB SPACING TO BE PLACED AT INTERVALS OF 2' (1) 4\"/>
 - 3) ALL REINFORCING SHALL BE 100% COVER.
 - 4) ALL REINFORCING SHALL BE 100% COVER.
 - 5) ALL REINFORCING SHALL BE 100% COVER.



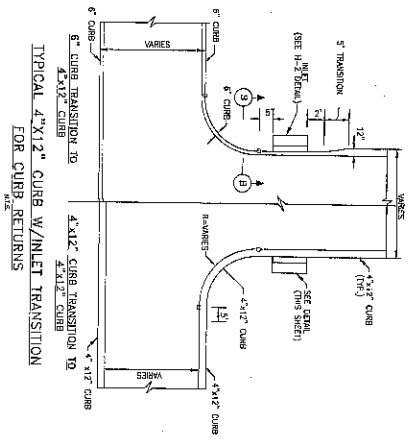
SL-ST-18

- 4\"/>

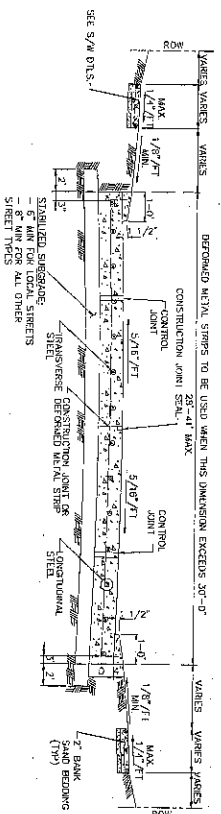
TRANSITION CURB NOTES:

 1. SAND CONCRETE CURB TO BE CONSTRUCTED ON ALL SIDEWALKS, DRIVEWAYS AND TRANSITION CURBS. RESIDENTIAL SIDEWALKS MAY BE CONSTRUCTED AS NORMAL PLAIN CONCRETE CURB OR 4-INCH x 12-INCH CONCRETE CURB.
 2. ALL 4-INCH x 12-INCH CONCRETE CURBS TO BE PLACED SEPARATE FROM TRANSITION CURBS.
 3. TRANSITION CURBS TO BE 4-INCH x 12-INCH CONCRETE CURB TO BE ALTERNATED WITH 4\"/>
 - 4. TRANSITION CURBS TO BE 4-INCH x 12-INCH CONCRETE CURB TO BE ALTERNATED WITH 4\"/>

SL-ST-20



SL-ST-14



SL-ST-19

TYPICAL SINGLE ROADWAY SECTION FOR CONCRETE PAVEMENT WITH 4\"/>

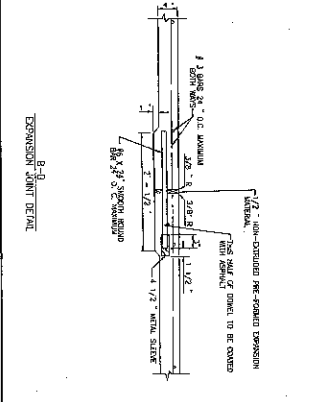
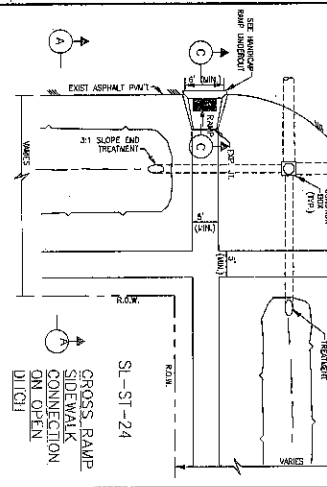
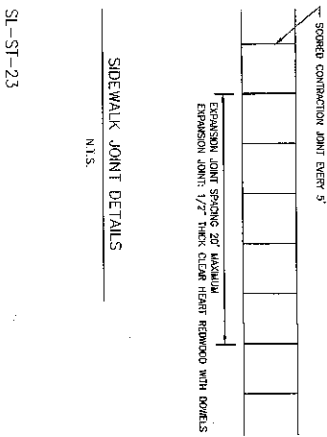
* SEE 4\"/>

(THIS SHEET)

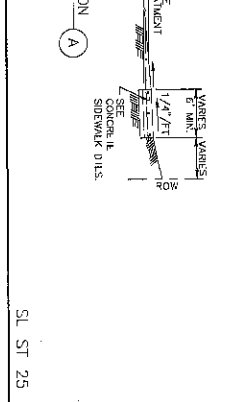
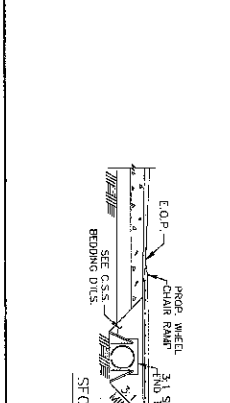
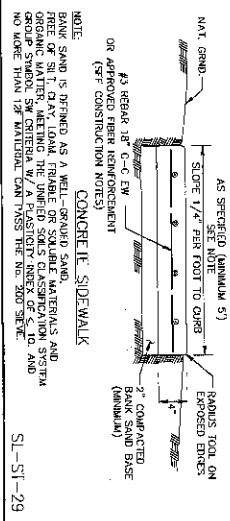
- CONSTRUCTION NOTES:
1. 8 INCH, 5.5 SACK CEMENT PER CUBIC YARD CONCRETE, 3500 PSI REINFORCED CONCRETE WITH #4 BARS 24 INCHES C-C, E.W. IS THE MINIMUM ACCEPTABLE PAVEMENT CONSTRUCTION FOR RESIDENTIAL STREETS.
 2. 7 INCH, 4 SACK CEMENT PER CUBIC YARD CONCRETE, 3500 PSI REINFORCED CONCRETE WITH #4 BARS 24 INCHES C-C, E.W. IS THE MINIMUM ACCEPTABLE PAVEMENT CONSTRUCTION FOR COLLECTOR STREETS.
 3. EIGHT (8) INCH, 5.5 SACK CEMENT PER CUBIC YARD CONCRETE, 3500 PSI REINFORCED CONCRETE WITH #4 BARS 24 INCHES C-C, E.W. IS THE MINIMUM ACCEPTABLE PAVEMENT CONSTRUCTION FOR ARTERIAL STREETS.
 4. TRANSVERSE EXPANSION JOINTS SHALL BE PLACED AT ALL POINTS OF CHANGE IN GRADE, CURB AND ALL INTERSECTION CURB RETURN POINTS (SEE 1001.02B, 1001.02C, 1001.02D, 1001.02E, 1001.02F, 1001.02G, 1001.02H, 1001.02I, 1001.02J, 1001.02K, 1001.02L, 1001.02M, 1001.02N, 1001.02O, 1001.02P, 1001.02Q, 1001.02R, 1001.02S, 1001.02T, 1001.02U, 1001.02V, 1001.02W, 1001.02X, 1001.02Y, 1001.02Z).
 5. TRANSVERSE CONTROL JOINTS ARE REQUIRED AT MAXIMUM SPACING OF 20'-0\"/>
 - 6. PAVEMENT FINISH SHALL BE BAKER SHOW FINISH CURING COMPOUND ON ALL CORNERS.
 - 7. CURB RETURN POINTS SHALL BE DESIGNED CONSTRUCTED TO WITHSTAND THE WEIGHT OF THE CURB AND THE WEIGHT OF THE QUALITY MATERIAL OF THE CURB.
 - 8. STRUTTED SUBGRADE SHALL BE EXCAVATED AND REPLACED WITH GRANULAR SAND.
 - 9. USE 1\"/>
 - 10. EXPOSE ALL SLEWS WITH EDGING TOOL.
 - 11. DOWN SHALL BE 3/4\"/>
 - 12. IT IS THE CONTRACTOR'S RESPONSIBILITY TO NOTIFY THE CITY OF SUGAR LAND OF ANY DISCREPANCIES PRIOR TO CONSTRUCTION OF DRIVEWAY.
 - 13. REFER TO GENERAL C.S.S. AND PAVEMENT NOTES.
 - 14. 1.0 LBS OF APPROVED POLYPROPYLENE FIBER MESH PER CY IN 4\"/>

SL-ST-20

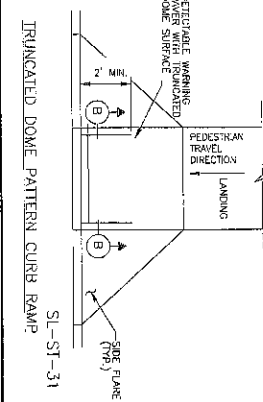
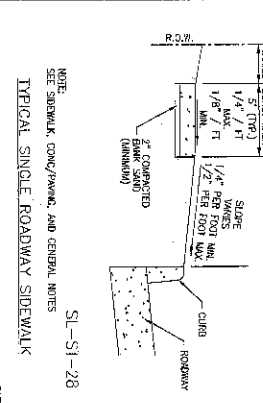
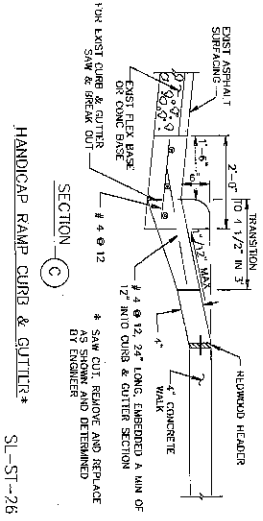
SCALE	DATE	BY	CHECKED
CITY OF SUGAR LAND, TEXAS ENGINEERING DEPARTMENT CONSTRUCTION PLANS DEB AVILA SOUTH CENTRAL PARK RESIDENTIAL CURB CONSTRUCTION DETAILS			
DESIGNED BY	DATE	SHEET	OF
SL-23			



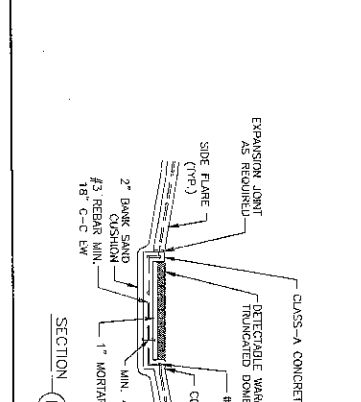
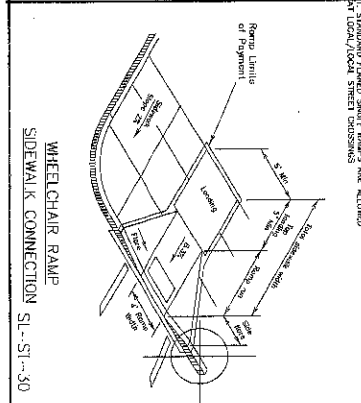
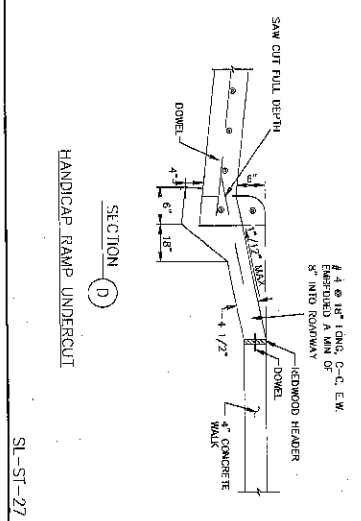
- NOTES:**
1. EXISTING CURB AND GUTTER TO BE SAW CUT, REMOVED AND REPLACED WITH STEEL (18\"/>
 - 2. EXISTING CURB AND GUTTER TO BE SAW CUT, REMOVED AND REPLACED WITH STEEL (18\"/>
 - 3. EXISTING CURB AND GUTTER TO BE SAW CUT, REMOVED AND REPLACED WITH STEEL (18\"/>
 - 4. ALL EXISTING CURB AND GUTTER TO BE SAW CUT, REMOVED AND REPLACED WITH STEEL (18\"/>
 - 5. ALL EXISTING CURB AND GUTTER TO BE SAW CUT, REMOVED AND REPLACED WITH STEEL (18\"/>
 - 6. ALL EXISTING CURB AND GUTTER TO BE SAW CUT, REMOVED AND REPLACED WITH STEEL (18\"/>
 - 7. ALL EXISTING CURB AND GUTTER TO BE SAW CUT, REMOVED AND REPLACED WITH STEEL (18\"/>
 - 8. ALL EXISTING CURB AND GUTTER TO BE SAW CUT, REMOVED AND REPLACED WITH STEEL (18\"/>
 - 9. ALL EXISTING CURB AND GUTTER TO BE SAW CUT, REMOVED AND REPLACED WITH STEEL (18\"/>
 - 10. ALL EXISTING CURB AND GUTTER TO BE SAW CUT, REMOVED AND REPLACED WITH STEEL (18\"/>



- CONSTRUCTION NOTES:**
1. THE CURB AND GUTTER SHALL BE SAW CUT, REMOVED AND REPLACED WITH STEEL (18\"/>
 - 2. THE CURB AND GUTTER SHALL BE SAW CUT, REMOVED AND REPLACED WITH STEEL (18\"/>
 - 3. THE CURB AND GUTTER SHALL BE SAW CUT, REMOVED AND REPLACED WITH STEEL (18\"/>
 - 4. THE CURB AND GUTTER SHALL BE SAW CUT, REMOVED AND REPLACED WITH STEEL (18\"/>
 - 5. THE CURB AND GUTTER SHALL BE SAW CUT, REMOVED AND REPLACED WITH STEEL (18\"/>
 - 6. THE CURB AND GUTTER SHALL BE SAW CUT, REMOVED AND REPLACED WITH STEEL (18\"/>
 - 7. THE CURB AND GUTTER SHALL BE SAW CUT, REMOVED AND REPLACED WITH STEEL (18\"/>
 - 8. THE CURB AND GUTTER SHALL BE SAW CUT, REMOVED AND REPLACED WITH STEEL (18\"/>
 - 9. THE CURB AND GUTTER SHALL BE SAW CUT, REMOVED AND REPLACED WITH STEEL (18\"/>
 - 10. THE CURB AND GUTTER SHALL BE SAW CUT, REMOVED AND REPLACED WITH STEEL (18\"/>



- CONSTRUCTION NOTES:**
1. THE CURB AND GUTTER SHALL BE SAW CUT, REMOVED AND REPLACED WITH STEEL (18\"/>
 - 2. THE CURB AND GUTTER SHALL BE SAW CUT, REMOVED AND REPLACED WITH STEEL (18\"/>
 - 3. THE CURB AND GUTTER SHALL BE SAW CUT, REMOVED AND REPLACED WITH STEEL (18\"/>
 - 4. THE CURB AND GUTTER SHALL BE SAW CUT, REMOVED AND REPLACED WITH STEEL (18\"/>
 - 5. THE CURB AND GUTTER SHALL BE SAW CUT, REMOVED AND REPLACED WITH STEEL (18\"/>
 - 6. THE CURB AND GUTTER SHALL BE SAW CUT, REMOVED AND REPLACED WITH STEEL (18\"/>
 - 7. THE CURB AND GUTTER SHALL BE SAW CUT, REMOVED AND REPLACED WITH STEEL (18\"/>
 - 8. THE CURB AND GUTTER SHALL BE SAW CUT, REMOVED AND REPLACED WITH STEEL (18\"/>
 - 9. THE CURB AND GUTTER SHALL BE SAW CUT, REMOVED AND REPLACED WITH STEEL (18\"/>
 - 10. THE CURB AND GUTTER SHALL BE SAW CUT, REMOVED AND REPLACED WITH STEEL (18\"/>



- CONSTRUCTION NOTES:**
1. THE CURB AND GUTTER SHALL BE SAW CUT, REMOVED AND REPLACED WITH STEEL (18\"/>
 - 2. THE CURB AND GUTTER SHALL BE SAW CUT, REMOVED AND REPLACED WITH STEEL (18\"/>
 - 3. THE CURB AND GUTTER SHALL BE SAW CUT, REMOVED AND REPLACED WITH STEEL (18\"/>
 - 4. THE CURB AND GUTTER SHALL BE SAW CUT, REMOVED AND REPLACED WITH STEEL (18\"/>
 - 5. THE CURB AND GUTTER SHALL BE SAW CUT, REMOVED AND REPLACED WITH STEEL (18\"/>
 - 6. THE CURB AND GUTTER SHALL BE SAW CUT, REMOVED AND REPLACED WITH STEEL (18\"/>
 - 7. THE CURB AND GUTTER SHALL BE SAW CUT, REMOVED AND REPLACED WITH STEEL (18\"/>
 - 8. THE CURB AND GUTTER SHALL BE SAW CUT, REMOVED AND REPLACED WITH STEEL (18\"/>
 - 9. THE CURB AND GUTTER SHALL BE SAW CUT, REMOVED AND REPLACED WITH STEEL (18\"/>
 - 10. THE CURB AND GUTTER SHALL BE SAW CUT, REMOVED AND REPLACED WITH STEEL (18\"/>

CITY OF SUGAR LAND, TEXAS
ENGINEERING DEPARTMENT

CONSTRUCTION PLANS FOR
WHEEL CHAIR RAMP &
SIDEWALK DETAILS I

DATE: 08/26/16

SCALE: AS SHOWN

PROJECT: SUGAR LAND, TEXAS

PROJECT NO: 16-000000-0000

PROJECT NAME: WHEEL CHAIR RAMP & SIDEWALK DETAILS I

PROJECT LOCATION: SUGAR LAND, TEXAS

PROJECT DESCRIPTION: WHEEL CHAIR RAMP & SIDEWALK DETAILS I

PROJECT STATUS: IN PROGRESS

PROJECT CONTACT: [Name]

PROJECT PHONE: [Phone]

PROJECT FAX: [Fax]

PROJECT EMAIL: [Email]

PROJECT WEBSITE: [Website]

PROJECT ADDRESS: [Address]

PROJECT CITY: [City]

PROJECT STATE: [State]

PROJECT ZIP: [Zip]

PROJECT COUNTRY: [Country]

PROJECT CONTINENT: [Continent]

PROJECT OCEAN: [Ocean]

PROJECT CLIMATE: [Climate]

PROJECT VEGETATION: [Vegetation]

PROJECT SOIL: [Soil]

PROJECT WATER: [Water]

PROJECT AIR: [Air]

PROJECT GROUND: [Ground]

PROJECT SKY: [Sky]

PROJECT SUN: [Sun]

PROJECT MOON: [Moon]

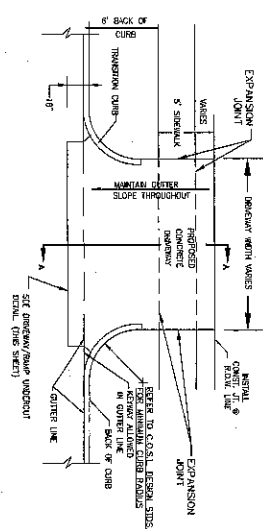
PROJECT STARS: [Stars]

PROJECT PLANETS: [Planets]

PROJECT GALAXIES: [Galaxies]

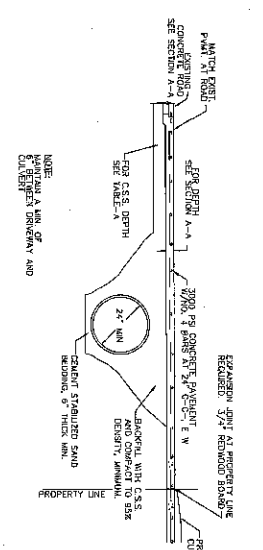
PROJECT UNIVERSE: [Universe]

**6" CONCRETE CURB
DRIVEWAY PLAN**
N.T.S.



SI-ST-41

**CONCRETE APRON DETAIL - DRIVEWAY PROFILE
FOR CULVERT DRAINAGE**
N.T.S.

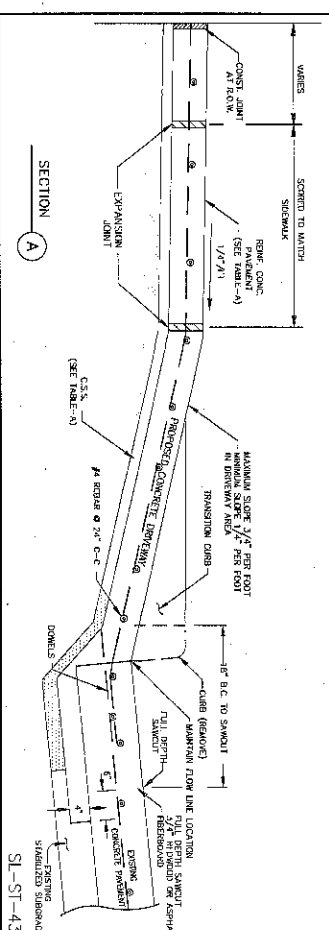


SI-ST-42

- NOTES:
- 1) SAW CUT & BRUSHED NO MORE THAN 72 HOURS FROM CURB AND CONCRETE DRIVEWAY SURF.
 - 2) UNPAVED SURFACE SHALL BE OVER EXCAVATED & REPLACED WITH CONCRETE.
 - 3) IT IS CONTRACTOR'S RESPONSIBILITY TO NOTIFY SOIL LENO & AIR BODY TEST PROBLEMS PRIOR TO CONSTRUCTION OF DRIVEWAY.
 - 4) USE 1 1/2" TREATED REDWOOD FOR HEADERS.
 - 5) EDGE ALL SPICES WITH EDGING TOOL AND BROW FINISH.
 - 6) FOR INDUSTRIAL DRIVES, PAVEMENT SHALL HAVE A DEPTH OF 8" (8').
 - 7) EXPANSION JOINT AT PROPERTY LINE REQUIRED. 3/4" REDWOOD BOARD WITH NO. 4 DOWELS MINIMUM.
 - 8) MAXIMUM ALLOWABLE DRIVEWAY GRADE IN PULC ROW IS 5%.
 - 9) DRIVEWAY GRADE MUST MEET A.A.A. AND T.A.S. SIKKAWA SLOPE. SIKKAWA MUST BE SLOPED TO MATCH ADJACENT SIDEWALK OR A 3/4" REDWOOD EXPANSION JOINT WITH DOWELS AT ROW LINE.
 - 10) REFER TO SPECIFICATIONS, C.A.S., ASPHALT, AND CONCRETE PAVEMENT NOTES.

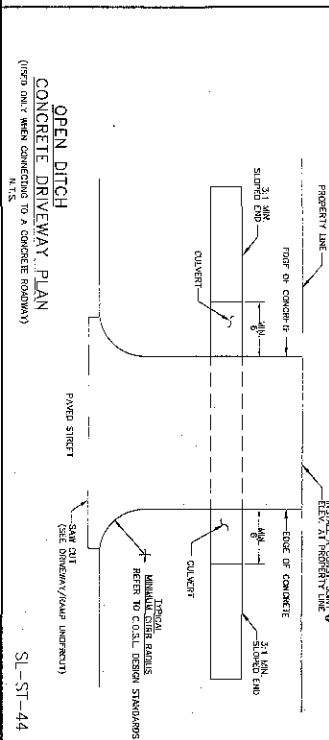
SI-ST-49

SECTION A



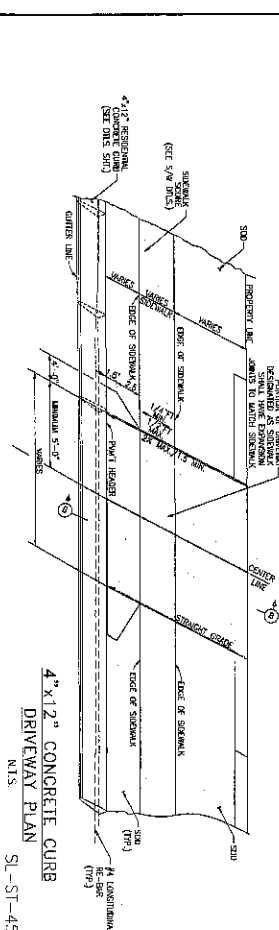
SI-ST-43

**OPEN DITCH
CONCRETE DRIVEWAY PLAN**
(FROM DRAINAGE CONNECTION TO A CONCRETE ROADWAY)
N.T.S.



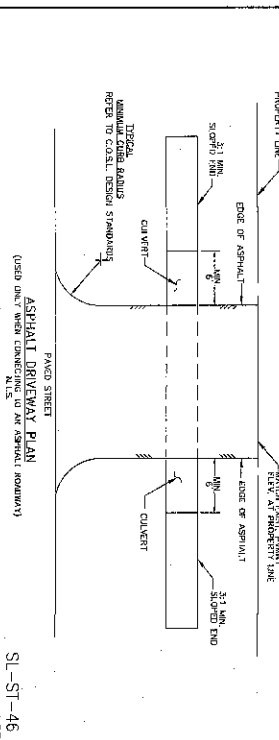
SI-ST-44

SECTION B



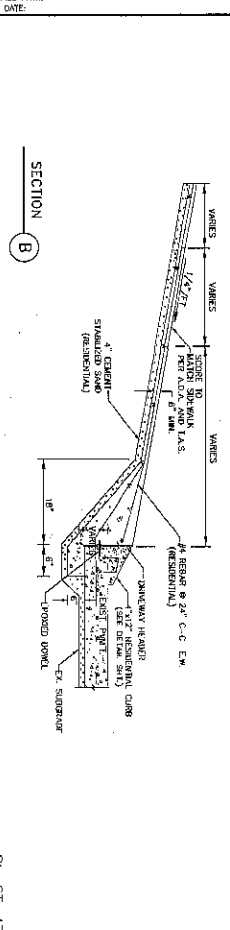
SI-ST-45

**ASPHALT DRIVEWAY PLAN
(USED ONLY WHEN CONNECTING TO AN ASPHALT ROADWAY)
N.T.S.**



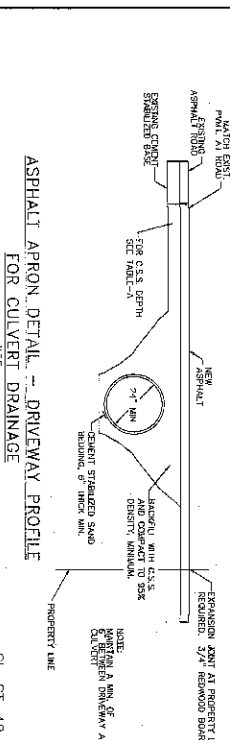
SI-ST-46

SECTION B



SI-ST-47

**ASPHALT APRON DETAIL - DRIVEWAY PROFILE
FOR CULVERT DRAINAGE
N.T.S.**



SI-ST-48

TABLE-A

ITEM	DESCRIPTION	QUANTITY	UNIT
1	CONCRETE DRIVEWAY	1	LINEAL FOOT
2	CONCRETE CURB	1	LINEAL FOOT
3	ASPHALT DRIVEWAY	1	LINEAL FOOT
4	ASPHALT CURB	1	LINEAL FOOT
5	EXPANSION JOINT	1	LINEAL FOOT
6	EDGING TOOL	1	LINEAL FOOT
7	BROW FINISH	1	LINEAL FOOT
8	REWORK	1	LINEAL FOOT
9	PAVEMENT	1	LINEAL FOOT
10	CONCRETE DRIVEWAY	1	LINEAL FOOT
11	CONCRETE CURB	1	LINEAL FOOT
12	ASPHALT DRIVEWAY	1	LINEAL FOOT
13	ASPHALT CURB	1	LINEAL FOOT
14	EXPANSION JOINT	1	LINEAL FOOT
15	EDGING TOOL	1	LINEAL FOOT
16	BROW FINISH	1	LINEAL FOOT
17	REWORK	1	LINEAL FOOT
18	PAVEMENT	1	LINEAL FOOT

**DRIVEWAY
PAVEMENT
CONSTRUCTION TABLE**

CITY OF SUGAR LAND, TEXAS
CONSTRUCTION PLANS FOR:
AVADON SOUTH CENTRAL PARK

**DRIVEWAY
CONSTRUCTION DETAILS**

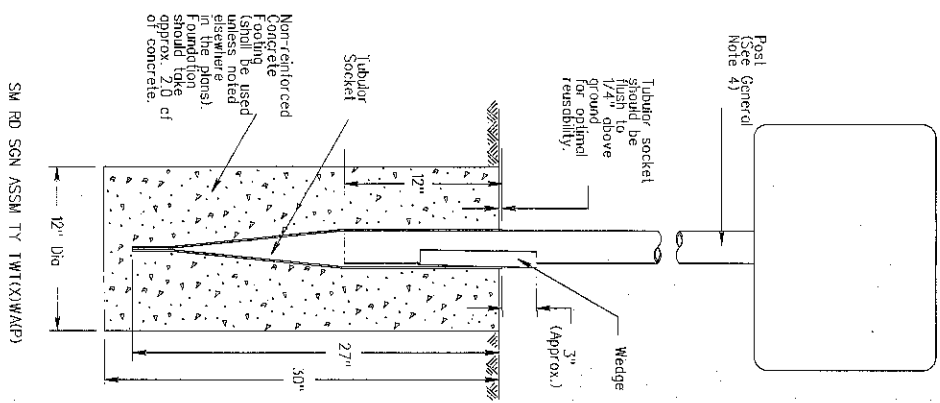
SI-ST-27

DATE: _____
DRAWN BY: _____
CHECKED BY: _____
SCALE: _____

CITY OF SUGAR LAND, TEXAS
CONSTRUCTION DEPARTMENT

AVADON SOUTH CENTRAL PARK

Wedge Anchor System

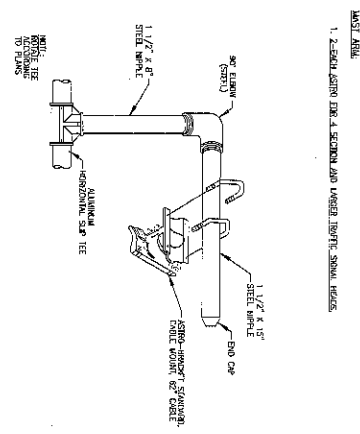


CG FILE PATH:
PLOT DATE:

PLOT TIME:

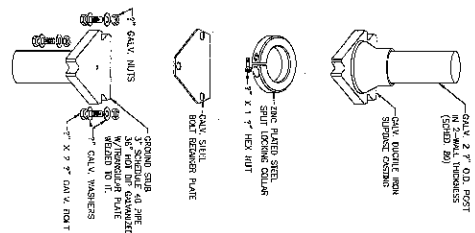
SL-ST-62

ASTRO BRACKET CABLE MOUNT DETAIL



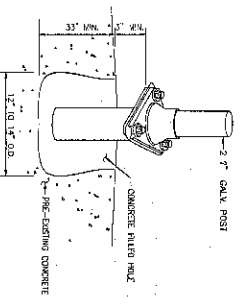
SL-ST-63

POZ-LOCK SUPBASE SYSTEM



SL-ST-64

CONCRETE SIGN PEDESTAL



SL-ST-65

NOTICE TO BE AFFIXED TO THE BACK OF ALL SIGN, STREET SIGNS

NON-RESIDENTIAL ATTEMPT TO BE MADE
ALTER OR REMOVE ANY SIGN OR SIGNAGE
WITHOUT THE WRITTEN PERMISSION OF
THE CITY ENGINEER.

MAXIMUM PENALTIES

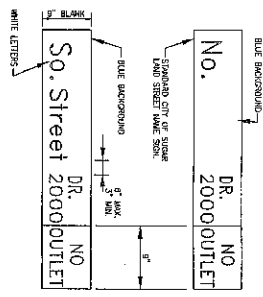
VIOLATION
\$100
PER DAY

VIOLATION
\$250
PER DAY

VIOLATION
\$500
PER DAY

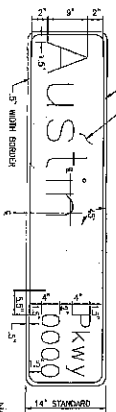
SL-ST-68

DETAIL OF STANDARD STREET NAME SIGN



SL-ST-66

DETAIL OF SIGN FOR MAIST ARM TRAFFIC SIGNAL POLES



SL-ST-67

GENERAL CONSTRUCTION NOTES:

1. EXISTING MAIST ARM TRAFFIC SIGNAL POLES WITH MULTI-LEVEL AND DUAL-LEVEL SIGNALS SHOULD NOT BE REPAIRED FROM IMPERMANENT DAMAGE.
2. SIGNPOST WINGS SHOULD NOT BE PROVIDED FROM IMPERMANENT DAMAGE.
3. SIGNPOST WINGS SHOULD BE PROVIDED FROM IMPERMANENT DAMAGE ON SIGN TRAFFIC SIGNAL.
4. THE FIRST LETTER OF EACH WORD SHALL BE UPPERCASE. SUBSEQUENT LETTERS SHALL BE LOWER CASE. ALL NUMERICALS SHALL BE UPPERCASE.
5. ALL SIGNPOST SHALL BE THRU-BOLT CONNECTED TO APPROVED COIL.
6. SIGNPOST WINGS SHALL BE HEAVY GAUGE ALUMINUM EXTRUDED.
7. SIGNPOST WINGS SHALL BE HEAVY GAUGE ALUMINUM EXTRUDED.
8. MINIMUM SIGN THICKNESS 8 SIGNS = .087" 14" SIGNS = .1875"

SL-ST-68

DATE: 10/10/12	SCALE: AS SHOWN	
DESIGNED BY: [Signature]	CHECKED BY: [Signature]	
CITY OF SUGAR LAND, TEXAS ENGINEERING DEPARTMENT CONTRIBUTION PLANS FOR AVALON SOUTH CENTRAL PARK		
SIGN DETAILS CONSTRUCTION DETAILS		
DATE: 10/10/12	SCALE: AS SHOWN	
DESIGNED BY: [Signature]	CHECKED BY: [Signature]	SIGN CONSTRUCTION DETAILS
DATE: 10/10/12	SCALE: AS SHOWN	SL-32

HYPER-CHLORINATED WATER NOTES

1. Before operation water shall not be discharged to the storm sewer or drainage system unless the chlorine concentration is reduced to a ppm or less by chemical treating the chlorinated water.
2. Discharge of high flow rates and velocities shall be directed to channels that are vegetated so it should not be used to water vegetation that is being used for stabilization. Vegetated plants or hyper-chlorinated water may be discharged to an onsite retention pond.
3. Stormwater retention basin, or a portion of the site may be graded to form a "hardcover" or "hardpan" and be used by adjacent area.
4. Can be added to the water by breaking the discharge over a rock or other device and reducing the velocity to 10 ft per second.
5. Other devices may require the use of a retention tank or a retention basin.
6. Discharge of hyper-chlorinated water shall be directed to a retention tank or a retention basin.
7. Discharge of hyper-chlorinated water shall be directed to a retention tank or a retention basin.
8. Discharge of hyper-chlorinated water shall be directed to a retention tank or a retention basin.
9. Discharge of hyper-chlorinated water shall be directed to a retention tank or a retention basin.
10. Discharge of hyper-chlorinated water shall be directed to a retention tank or a retention basin.
11. Discharge of hyper-chlorinated water shall be directed to a retention tank or a retention basin.
12. Discharge of hyper-chlorinated water shall be directed to a retention tank or a retention basin.
13. Discharge of hyper-chlorinated water shall be directed to a retention tank or a retention basin.
14. Discharge of hyper-chlorinated water shall be directed to a retention tank or a retention basin.
15. Discharge of hyper-chlorinated water shall be directed to a retention tank or a retention basin.

SANITARY WASTE NOTES

1. The contractor shall provide an appropriate number of portable sanitary facilities for employees using the toilet and hand washing facilities.
2. Sanitary facilities shall be placed on a minimum of 50 feet away from any building, structure, or other facility.
3. Sanitary facilities shall be placed on a minimum of 50 feet away from any building, structure, or other facility.
4. Sanitary facilities shall be placed on a minimum of 50 feet away from any building, structure, or other facility.
5. Sanitary facilities shall be placed on a minimum of 50 feet away from any building, structure, or other facility.
6. Sanitary facilities shall be placed on a minimum of 50 feet away from any building, structure, or other facility.
7. Sanitary facilities shall be placed on a minimum of 50 feet away from any building, structure, or other facility.
8. Sanitary facilities shall be placed on a minimum of 50 feet away from any building, structure, or other facility.
9. Sanitary facilities shall be placed on a minimum of 50 feet away from any building, structure, or other facility.
10. Sanitary facilities shall be placed on a minimum of 50 feet away from any building, structure, or other facility.
11. Sanitary facilities shall be placed on a minimum of 50 feet away from any building, structure, or other facility.
12. Sanitary facilities shall be placed on a minimum of 50 feet away from any building, structure, or other facility.
13. Sanitary facilities shall be placed on a minimum of 50 feet away from any building, structure, or other facility.
14. Sanitary facilities shall be placed on a minimum of 50 feet away from any building, structure, or other facility.
15. Sanitary facilities shall be placed on a minimum of 50 feet away from any building, structure, or other facility.

DEBRIS AND TRASH NOTES



1. All waste sources and storage areas shall be located a minimum of 50 feet away from any building, structure, or other facility.
2. Construction waste and trash shall be stored in a manner that prevents the generation of dust and odor.
3. Construction waste and trash shall be stored in a manner that prevents the generation of dust and odor.
4. Construction waste and trash shall be stored in a manner that prevents the generation of dust and odor.
5. Construction waste and trash shall be stored in a manner that prevents the generation of dust and odor.
6. Construction waste and trash shall be stored in a manner that prevents the generation of dust and odor.
7. Construction waste and trash shall be stored in a manner that prevents the generation of dust and odor.
8. Construction waste and trash shall be stored in a manner that prevents the generation of dust and odor.
9. Construction waste and trash shall be stored in a manner that prevents the generation of dust and odor.
10. Construction waste and trash shall be stored in a manner that prevents the generation of dust and odor.
11. Construction waste and trash shall be stored in a manner that prevents the generation of dust and odor.
12. Construction waste and trash shall be stored in a manner that prevents the generation of dust and odor.
13. Construction waste and trash shall be stored in a manner that prevents the generation of dust and odor.
14. Construction waste and trash shall be stored in a manner that prevents the generation of dust and odor.
15. Construction waste and trash shall be stored in a manner that prevents the generation of dust and odor.

SPILL AND LEAK RESPONSE NOTES

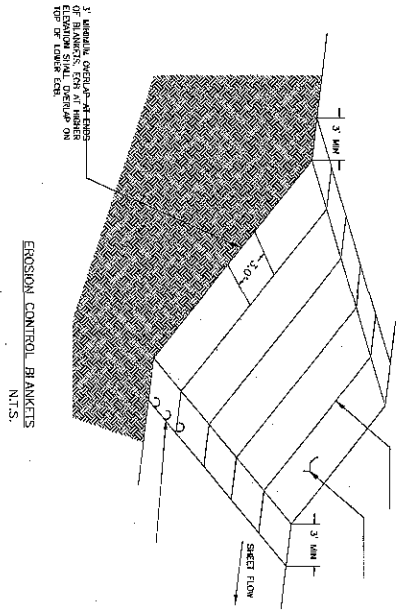
1. Records of releases that exceed the response plan must be kept for a minimum of 30 days.
2. Records of releases that exceed the response plan must be kept for a minimum of 30 days.
3. Records of releases that exceed the response plan must be kept for a minimum of 30 days.
4. Records of releases that exceed the response plan must be kept for a minimum of 30 days.
5. Records of releases that exceed the response plan must be kept for a minimum of 30 days.
6. Records of releases that exceed the response plan must be kept for a minimum of 30 days.
7. Records of releases that exceed the response plan must be kept for a minimum of 30 days.
8. Records of releases that exceed the response plan must be kept for a minimum of 30 days.
9. Records of releases that exceed the response plan must be kept for a minimum of 30 days.
10. Records of releases that exceed the response plan must be kept for a minimum of 30 days.
11. Records of releases that exceed the response plan must be kept for a minimum of 30 days.
12. Records of releases that exceed the response plan must be kept for a minimum of 30 days.
13. Records of releases that exceed the response plan must be kept for a minimum of 30 days.
14. Records of releases that exceed the response plan must be kept for a minimum of 30 days.
15. Records of releases that exceed the response plan must be kept for a minimum of 30 days.

SUBGRADE STABILIZATION NOTES

1. The contractor shall provide an appropriate number of portable sanitary facilities for employees using the toilet and hand washing facilities.
2. Sanitary facilities shall be placed on a minimum of 50 feet away from any building, structure, or other facility.
3. Sanitary facilities shall be placed on a minimum of 50 feet away from any building, structure, or other facility.
4. Sanitary facilities shall be placed on a minimum of 50 feet away from any building, structure, or other facility.
5. Sanitary facilities shall be placed on a minimum of 50 feet away from any building, structure, or other facility.
6. Sanitary facilities shall be placed on a minimum of 50 feet away from any building, structure, or other facility.
7. Sanitary facilities shall be placed on a minimum of 50 feet away from any building, structure, or other facility.
8. Sanitary facilities shall be placed on a minimum of 50 feet away from any building, structure, or other facility.
9. Sanitary facilities shall be placed on a minimum of 50 feet away from any building, structure, or other facility.
10. Sanitary facilities shall be placed on a minimum of 50 feet away from any building, structure, or other facility.
11. Sanitary facilities shall be placed on a minimum of 50 feet away from any building, structure, or other facility.
12. Sanitary facilities shall be placed on a minimum of 50 feet away from any building, structure, or other facility.
13. Sanitary facilities shall be placed on a minimum of 50 feet away from any building, structure, or other facility.
14. Sanitary facilities shall be placed on a minimum of 50 feet away from any building, structure, or other facility.
15. Sanitary facilities shall be placed on a minimum of 50 feet away from any building, structure, or other facility.

DATE: _____	SCALE: _____
BY: _____	CHECKED BY: _____
 CITY OF SUGAR LAND, TEXAS CONSTRUCTION PLANS FOR AVALON SOUTH CENTRAL PARK ENGINEERING DEPARTMENT	
 [Signature] [Title]	
GENERAL EROSION CONTROL NOTES	
SL-33	

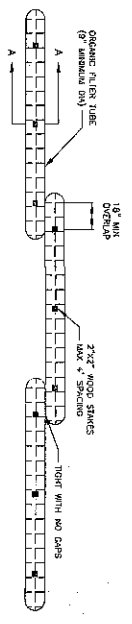
1/10/18



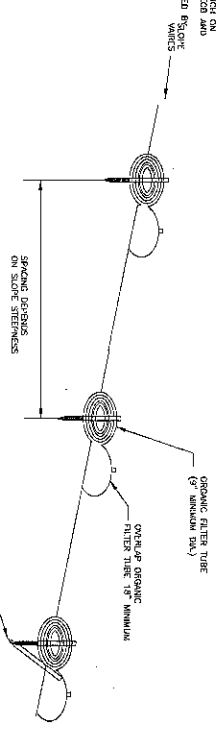
EROSION CONTROL BLANKETS
N.T.S.



EROSION CONTROL BLANKET
N.T.S.

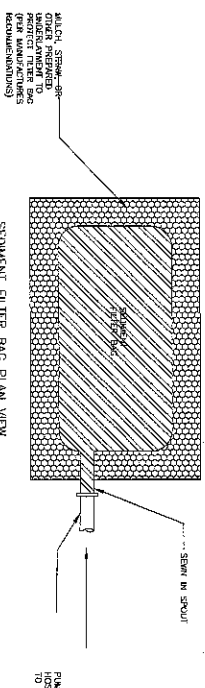


ORGANIC FILTER TUBE PERIMETER CONTROL PLAN VIEW
N.T.S.

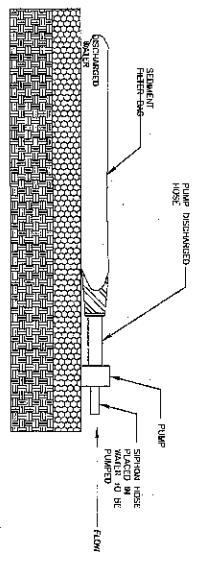


ORGANIC FILTER TUBE PERIMETER CONTROL PROFILE
N.T.S.

- ORGANIC FILTER TUBES NOTES**
- TYPE OF STAPLING FILTER MATERIAL, SPACING OF TUBES, AND SPACING OF TUBES SHALL BE DETERMINED BY THE CUSTOMER BASED ON THE FOLLOWING:
 - SIZE OF CONTRIBUTING DRAINAGE AREA
 - STEEPNESS OF SLOPE
 - ORGANIC COMPOSITION (SOIL OR PASTURE)
 - THE CUSTOMER SHALL REFER TO THE DRAWINGS FOR TUBES AND STAPLING. USUALLY LENGTHS SHALL BE MINIMUM OF 10 FEET.



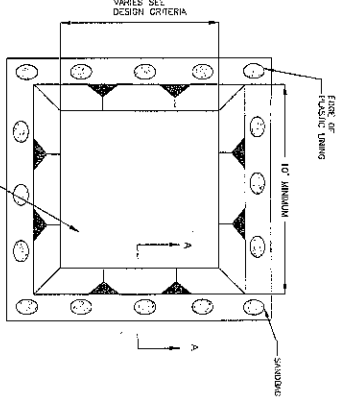
SEDIMENT FILTER BAG PLAN VIEW
N.T.S.



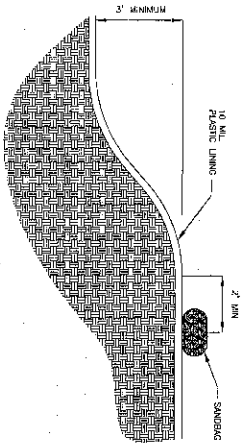
SEDIMENT FILTER BAG PROFILE
N.T.S.

NOTE: A FILTRATION BAG IS NOT REQUIRED IF THE DRAINAGE SYSTEM CAN BE ADEQUATELY PROTECTED

DEWATERING CONTROLS
N.T.S.



CONCRETE WASHOUT PLAN VIEW
N.T.S.




CONCRETE WASHOUT SECTION A-A
N.T.S.

CONCRETE WASHOUT NOTES

- STAKEOUT MARKS DERIVED BY A SURVEYOR TO LOCATE THE PLASTIC BAG

CONCRETE WASHOUT AREA
N.T.S.

DATE: _____	SCALE: _____
NO. _____	REVISION: _____
BY: _____	CHECKED: _____
DATE: _____	DATE: _____
	
CITY OF SUGAR LAND, TEXAS ENGINEERING DEPARTMENT	
CONSULTING ENGINEER: ATALON SOUTH CENTRAL PARK	
EROSION CONTROL DETAILS - 2	
SHEET NO. _____ TOTAL SHEETS _____	SCALE: _____ SHEET OF _____

**PERFORMANCE BOND COVERING ALL CABLE, CONDUIT AND/OR POLE LINE
ACTIVITY IN, UNDER, ACROSS OR ALONG FORT BEND COUNTY ROAD**

AUTHORIZED

BOND NO 106404925

THE STATE OF TEXAS

§

KNOW ALL MEN BY THESE PRESENTS:

COUNTY OF FORT BEND

§

THAT WE, Millis Equipment Rental, LLC whose address is 931 Pheasant Valley Dr., Suite 200, Missouri City, Texas 77489 Texas, hereinafter called the Principal, And Travelers Casualty and Surety Company of America, a Corporation existing under and by virtue of the laws of the state of Connecticut and authorized to do an indemnifying business in the state of Texas, and whose principal office is located at One Tower Square, Hartford, Connecticut 06183, whose officer residing in the State of Texas, authorized to accept service in all suits and actions brought whining said state is Texas and Whose address is 1301 E. Collins Blvd., Suite 111C, Richardson, Tx 75081, hereinafter called the Surety, and held and firmly bound unto, Robert e. Hebert, County Judge of Fort Bend County, Texas, or his successors in office, in the full sum of Five Thousand Dollars & No/100's Dollars (\$ 5,000.00) current, lawful money of the United States of America, to be paid to said Robert E. Hebert, County Judge of Fort Bend County, Texas, or his successors in office, to which payment well and truly to be made and done, we, the undersigned, bind ourselves and each of us, our heirs, executors, administrators, successors, assigns, and legal representatives, jointly and severally, by these presents.

THE CONDITION OF THIS BOND IS SUCH THAT, WHEREAS, the above bounden principal contemplates laying, constructing, maintaining and/or repairing one or more cables, conduits, and/or pole lines in, under, across and/or along roads, streets and highways, commercial driveway and median openings or modifications in the County of Fort Bend, and the State of Texas, under the jurisdiction of the Commissioners' Court of Fort Bend County, Texas, pursuant to the Commissioners' Court order adopted on the 1st day of December, A.D. 1980, recorded in Volume 13, of the Commissioners' Court Minutes of Fort Bend County, Texas, regulating same, which Commissioners' Court order is hereby referred to and made a part hereof for all purposes as though fully set out herein;

AND WHEREAS, the principal desires to provide Fort Bend County with a performance bond covering all such cable, conduit and/or pole line activity, commercial driveway and median openings or modifications;

NOW, THEREFORE, if the above bounden principal shall faithfully perform all its cable, conduit and/or pole line activity (including, but not limited to the laying, construction, maintenance and/or repair of cables, conduits and/or pole lines) in, under, across and/or along roads, streets and highways, commercial driveway and median openings or modifications in the County of Fort Bend and State of Texas, under the jurisdiction of the Commissioners Court of Fort Bend County, Texas, pursuant to and in accordance with minimum requirements and conditions of the above mentioned Commissioners' Court order set forth and specified to be by said principal done and performed, at the time and in the manner therein specified, and shall pay over and make good and reimburse Fort Bend County, all loss and damages which Fort Bend County may sustain by reason of any failure or default on the part of said principal, then this obligation shall be null and void, otherwise to remain in full force and effect.

This bond is payable at the County Courthouse in the County of Fort Bend and State of Texas.

It is understood that at any time Fort Bend County deems itself insecure under this bond, it may require further and/or additional bonds of the principal.

EXECUTED this 8th day of December, 20 15.

Millis Equipment Rental, LLC
PRINCIPAL

Paul Salt
BY

Travelers Casualty and Surety Company of America
SURETY

Roxanne G. Hebert
BY Roxanne G. Hebert, Attorney-in-Fact



POWER OF ATTORNEY

Farmington Casualty Company
Fidelity and Guaranty Insurance Company
Fidelity and Guaranty Insurance Underwriters, Inc.
St. Paul Fire and Marine Insurance Company
St. Paul Guardian Insurance Company

St. Paul Mercury Insurance Company
Travelers Casualty and Surety Company
Travelers Casualty and Surety Company of America
United States Fidelity and Guaranty Company

Attorney-In Fact No. 230155

Certificate No. 006596712

KNOW ALL MEN BY THESE PRESENTS: That Farmington Casualty Company, St. Paul Fire and Marine Insurance Company, St. Paul Guardian Insurance Company, St. Paul Mercury Insurance Company, Travelers Casualty and Surety Company, Travelers Casualty and Surety Company of America, and United States Fidelity and Guaranty Company are corporations duly organized under the laws of the State of Connecticut, that Fidelity and Guaranty Insurance Company is a corporation duly organized under the laws of the State of Iowa, and that Fidelity and Guaranty Insurance Underwriters, Inc., is a corporation duly organized under the laws of the State of Wisconsin (herein collectively called the "Companies"), and that the Companies do hereby make, constitute and appoint

Kurt A. Risk, Sue Kohler, Sharon Cavanaugh, Misty D. Amaya, Francine Hay, David R. Groppe, Sharen R. Groppe, Roxanne G. Hebert, and Beverly A. Ireland

of the City of Houston, State of Texas, their true and lawful Attorney(s)-in-Fact, each in their separate capacity if more than one is named above, to sign, execute, seal and acknowledge any and all bonds, recognizances, conditional undertakings and other writings obligatory in the nature thereof on behalf of the Companies in their business of guaranteeing the fidelity of persons, guaranteeing the performance of contracts and executing or guaranteeing bonds and undertakings required or permitted in any actions or proceedings allowed by law.

IN WITNESS WHEREOF, the Companies have caused this instrument to be signed and their corporate seals to be hereto affixed, this 12th day of November, 2015.

Farmington Casualty Company
Fidelity and Guaranty Insurance Company
Fidelity and Guaranty Insurance Underwriters, Inc.
St. Paul Fire and Marine Insurance Company
St. Paul Guardian Insurance Company

St. Paul Mercury Insurance Company
Travelers Casualty and Surety Company
Travelers Casualty and Surety Company of America
United States Fidelity and Guaranty Company



State of Connecticut
City of Hartford ss.

By: [Signature]
Robert L. Raney, Senior Vice President

On this the 12th day of November, 2015, before me personally appeared Robert L. Raney, who acknowledged himself to be the Senior Vice President of Farmington Casualty Company, Fidelity and Guaranty Insurance Company, Fidelity and Guaranty Insurance Underwriters, Inc., St. Paul Fire and Marine Insurance Company, St. Paul Guardian Insurance Company, St. Paul Mercury Insurance Company, Travelers Casualty and Surety Company, Travelers Casualty and Surety Company of America, and United States Fidelity and Guaranty Company, and that he, as such, being authorized so to do, executed the foregoing instrument for the purposes therein contained by signing on behalf of the corporations by himself as a duly authorized officer.

In Witness Whereof, I hereunto set my hand and official seal.
My Commission expires the 30th day of June, 2016.



[Signature]
Marie C. Tetreault, Notary Public

This Power of Attorney is granted under and by the authority of the following resolutions adopted by the Boards of Directors of Farmington Casualty Company, Fidelity and Guaranty Insurance Company, Fidelity and Guaranty Insurance Underwriters, Inc., St. Paul Fire and Marine Insurance Company, St. Paul Guardian Insurance Company, St. Paul Mercury Insurance Company, Travelers Casualty and Surety Company, Travelers Casualty and Surety Company of America, and United States Fidelity and Guaranty Company, which resolutions are now in full force and effect, reading as follows:

RESOLVED, that the Chairman, the President, any Vice Chairman, any Executive Vice President, any Senior Vice President, any Vice President, any Second Vice President, the Treasurer, any Assistant Treasurer, the Corporate Secretary or any Assistant Secretary may appoint Attorneys-in-Fact and Agents to act for and on behalf of the Company and may give such appointee such authority as his or her certificate of authority may prescribe to sign with the Company's name and seal with the Company's seal bonds, recognizances, contracts of indemnity, and other writings obligatory in the nature of a bond, recognizance, or conditional undertaking, and any of said officers or the Board of Directors at any time may remove any such appointee and revoke the power given him or her; and it is

FURTHER RESOLVED, that the Chairman, the President, any Vice Chairman, any Executive Vice President, any Senior Vice President or any Vice President may delegate all or any part of the foregoing authority to one or more officers or employees of this Company, provided that each such delegation is in writing and a copy thereof is filed in the office of the Secretary; and it is

FURTHER RESOLVED, that any bond, recognizance, contract of indemnity, or writing obligatory in the nature of a bond, recognizance, or conditional undertaking shall be valid and binding upon the Company when (a) signed by the President, any Vice Chairman, any Executive Vice President, any Senior Vice President or any Vice President, any Second Vice President, the Treasurer, any Assistant Treasurer, the Corporate Secretary or any Assistant Secretary and duly attested and sealed with the Company's seal by a Secretary or Assistant Secretary; or (b) duly executed (under seal, if required) by one or more Attorneys-in-Fact and Agents pursuant to the power prescribed in his or her certificate or their certificates of authority or by one or more Company officers pursuant to a written delegation of authority; and it is

FURTHER RESOLVED, that the signature of each of the following officers: President, any Executive Vice President, any Senior Vice President, any Vice President, any Assistant Vice President, any Secretary, any Assistant Secretary, and the seal of the Company may be affixed by facsimile to any Power of Attorney or to any certificate relating thereto appointing Resident Vice Presidents, Resident Assistant Secretaries or Attorneys-in-Fact for purposes only of executing and attesting bonds and undertakings and other writings obligatory in the nature thereof, and any such Power of Attorney or certificate bearing such facsimile signature or facsimile seal shall be valid and binding upon the Company and any such power so executed and certified by such facsimile signature and facsimile seal shall be valid and binding on the Company in the future with respect to any bond or understanding to which it is attached.

I, Kevin E. Hughes, the undersigned, Assistant Secretary, of Farmington Casualty Company, Fidelity and Guaranty Insurance Company, Fidelity and Guaranty Insurance Underwriters, Inc., St. Paul Fire and Marine Insurance Company, St. Paul Guardian Insurance Company, St. Paul Mercury Insurance Company, Travelers Casualty and Surety Company, Travelers Casualty and Surety Company of America, and United States Fidelity and Guaranty Company do hereby certify that the above and foregoing is a true and correct copy of the Power of Attorney executed by said Companies, which is in full force and effect and has not been revoked.

IN TESTIMONY WHEREOF, I have hereunto set my hand and affixed the seals of said Companies this 8th day of December, 2015.

WARNING: THIS POWER OF ATTORNEY IS INVALID WITHOUT THE RED BORDER

Kevin E. Hughes
Kevin E. Hughes, Assistant Secretary



To verify the authenticity of this Power of Attorney, call 1-800-421-3880 or contact us at www.travelersbond.com. Please refer to the Attorney-In-Fact number, the above-named individuals and the details of the bond to which the power is attached.



IMPORTANT NOTICE

TO OBTAIN INFORMATION OR MAKE A COMPLAINT:

You may contact Travelers Casualty & Surety Company of America, Travelers Casualty & Surety Company, Travelers Indemnity Company, Standard Fire Insurance Company and/or Farmington Casualty Company for information or to make a complaint at:

Travelers Bond
Attn: Claims
1500 Market Street
West Tower, Suite 2900
Philadelphia, PA 19102

(267) 675-3130
(267) 675-3102 Fax

You may contact the Texas Department of Insurance to obtain the information on companies, coverages, rights or complaints at:

Texas Department of Insurance
P.O. Box 149104
Austin, TX 78714-9104

(800) 252-3439

ATTACH THIS NOTICE TO YOUR BOND. This notice is for information only and does not become a part or a condition of the attached document and is given to comply with Section 2253-021, Government Code, and Section 53.202, Property Code, effective September 1, 2001.

