

REVIEW BY FORT BEND COUNTY COMMISSIONERS COURT

On this 23rd day of February, 2016, Commissioners Court came on to be heard and reviewed the accompanying notice of Debo Homes LLC / J.C. Hernandez Construction, Inc. Job Location 11007 Emily Ruth, Needville, TX 77461 Date 2/11/2016 Bond No. 5054575, Permit No. 2016-5543 to make use of certain Fort Bend County property subject to, "A Revised Order Regulating the Laying, Construction, Maintenance, and Repair of Buried Cables, Conduits, and Pole Lines, In, Under, Across or Along Roads, Streets, Highways, and Drainage Ditches in Fort Bend County, Texas, Under the Jurisdiction of the Commissioners Court of Fort Bend County, Texas," as passed by the Commissioners Court of Fort Bend County, Texas the 3rd day of August, 1987, recorded in Volume _____ of the Minutes of the Commissioners Court of Fort Bend County, Texas, to the extent that such order is not inconsistent with Article 1436a, Vernon's Texas Civil Statutes. Upon Motion of Commissioner _____, seconded by Commissioner _____, duly put and carried, it is ORDERED, ADJUDGED AND DECREED that said notice of said above purpose is hereby acknowledged by the Commissioners Court of Fort Bend County, Texas, and that said notice be placed on record according to the regulation order thereof.

Notes:

1. Evidence of review by the Commissioners Court must be kept on the job site and failure to do so constitutes grounds for job shutdown.
2. Written notices are required:
 - a. 48 hours in advance of construction start up, and
 - b. when construction is completed and ready for final inspection
 Mail notices to: Permit Administrator
 Fort Bend County Engineering
 301 Jackson Street
 Richmond, Texas 77469
 281-633-7500
3. This permit expires one (1) year from date of permit if construction has not commenced.

By: Charles O. Wy
County Engineer

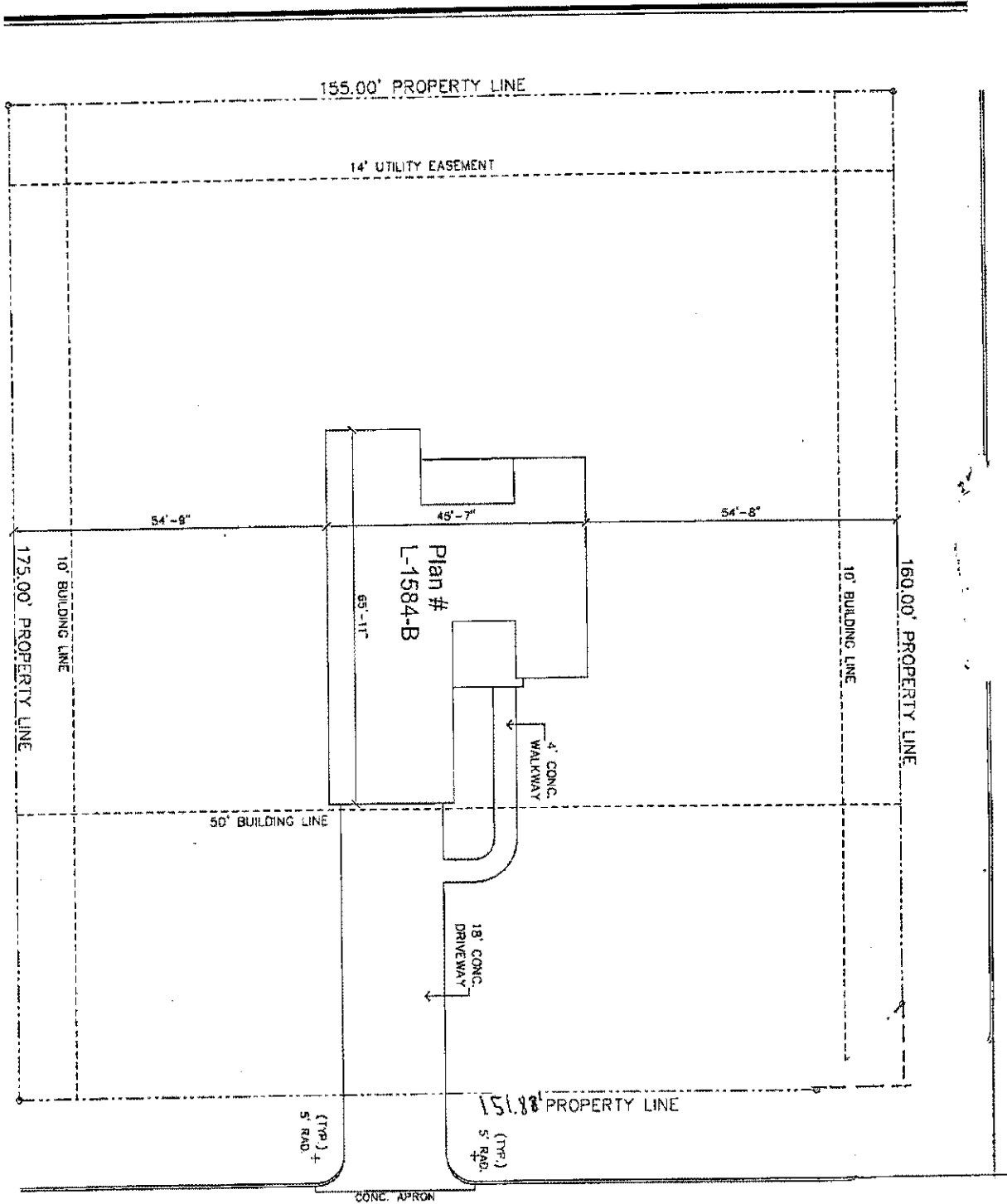
Presented to Commissioners Court and approved.
Recorded in Volume _____

By: N/A
Drainage District Engineer/Manager

Minutes of Commissioners Court

Clerk of Commissioners Court

By: _____
Deputy



11007 EMILY RUTH DRIVE (70' R.O.W.)



SITE PLAN
 SCALE: 1/16" = 1'-0"
 LOT = 10
 BLK = 4
 SEC = 3
 Rose Meadow Subd
 NOTE: PROVIDE FOR TYPE "X" DRAINAGE

From: Anderson Builders

	SHEET NO. S-1
	PLAN NO. 1
DRAWING NO. 1584-B	DATE 1/1/11

James Mitchell Designer
 PROFESSIONAL BUILDING DESIGN SERVICES

11211 Log Cabin Lane Tampa, Tampa 33625
 (712) 501-2423 (cell) james@jmdesign.com (712) 501-2423

DEBO HOMES

REVISIONS

NO.	DATE	DESCRIPTION