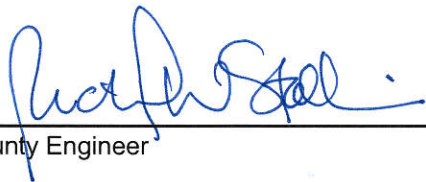


**REVIEW BY FORT BEND COUNTY COMMISSIONERS COURT**

On this 26th day of January, 2016, Commissioners Court came on to be heard and reviewed the accompanying notice of Debo Homes LLC / J C Hernandez Construction, Inc. Job Location 11203 Emily Ruth, Needville, TX 77461 Date 1/15/2016 Bond No. 5054575, Permit No. 2016-5008 to make use of certain Fort Bend County property subject to, "A Revised Order Regulating the Laying, Construction, Maintenance, and Repair of Buried Cables, Conduits, and Pole Lines, In, Under, Across or Along Roads, Streets, Highways, and Drainage Ditches in Fort Bend County, Texas, Under the Jurisdiction of the Commissioners Court of Fort Bend County, Texas," as passed by the Commissioners Court of Fort Bend County, Texas the 3rd day of August, 1987, recorded in Volume \_\_\_\_\_ of the Minutes of the Commissioners Court of Fort Bend County, Texas, to the extent that such order is not inconsistent with Article 1436a, Vernon's Texas Civil Statutes. Upon Motion of Commissioner \_\_\_\_\_, seconded by Commissioner \_\_\_\_\_, duly put and carried, it is ORDERED, ADJUDGED AND DECREED that said notice of said above purpose is hereby acknowledged by the Commissioners Court of Fort Bend County, Texas, and that said notice be placed on record according to the regulation order thereof.

Notes:

1. Evidence of review by the Commissioners Court must be kept on the job site and failure to do so constitutes grounds for job shutdown.
2. Written notices are required:
  - a. 48 hours in advance of construction start up, and
  - b. when construction is completed and ready for final inspection
 Mail notices to: Permit Administrator  
 Fort Bend County Engineering  
 301 Jackson Street  
 Richmond, Texas 77469  
 281-633-7500
3. This permit expires one (1) year from date of permit if construction has not commenced.

By:   
County Engineer

Presented to Commissioners Court and approved.  
Recorded in Volume \_\_\_\_\_

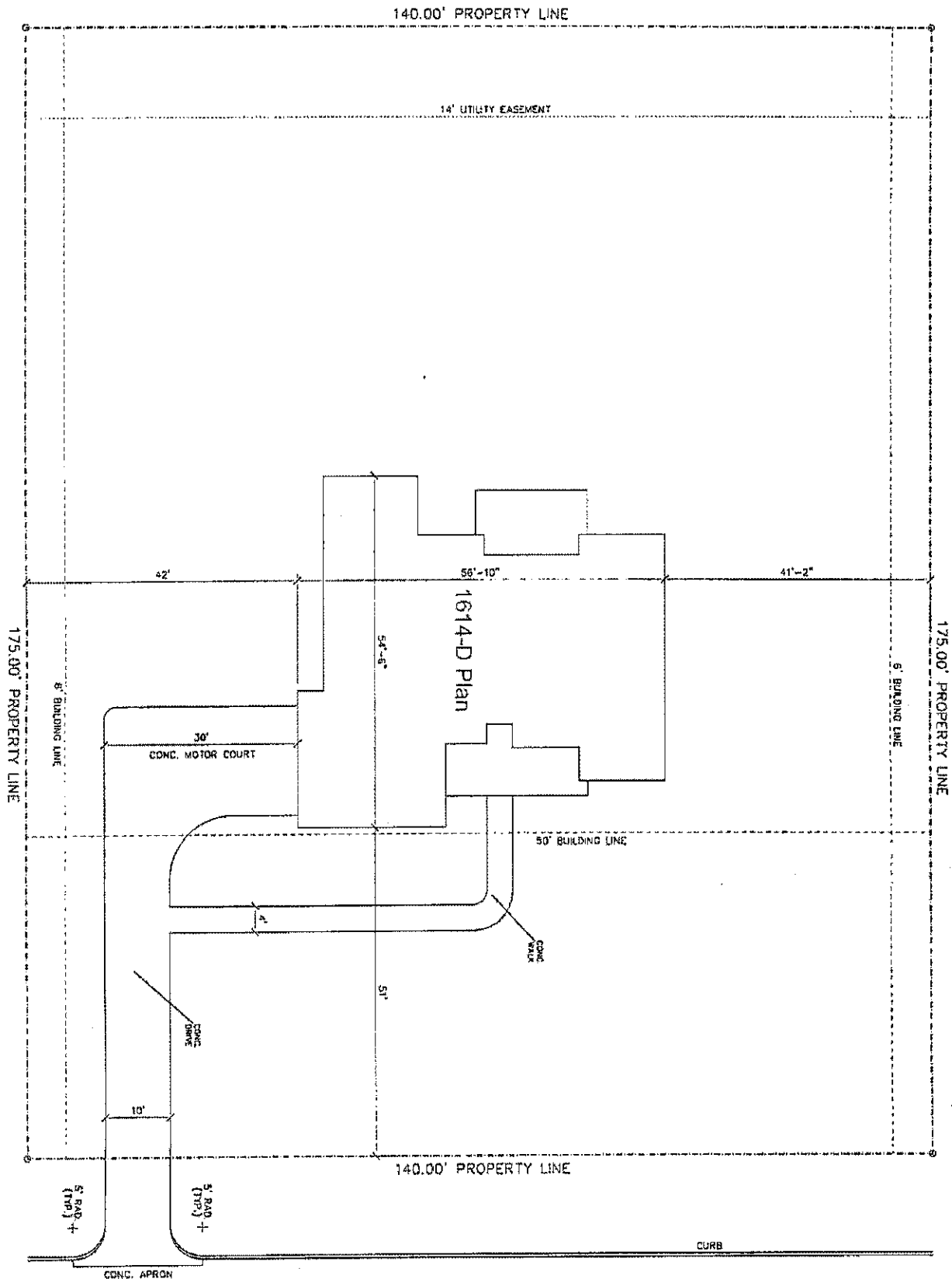
By: N/A  
Drainage District Engineer/Manager

Minutes of Commissioners Court

Clerk of Commissioners Court

By: \_\_\_\_\_  
Deputy





11203 EMILY RUTH (70' R.O.W.)



**SITE PLAN**  
 SCALE: 1/8" = 1'-0"  
 LOT - 4  
 BLK - 7  
 SEC - 3  
 Rose Meadow Subd.  
 NOTE: PROVIDE FOR 194' X 6" DIMENSIONS