

PLAT RECORDING SHEET

PLAT NAME: Jordan Ranch, Sec. 5

PLAT NO: _____

ACREAGE: 24.951

LEAGUE: H. & T.C.R.R. Co. Survey, Section 105

ABSTRACT NUMBER: 261

NUMBER OF BLOCKS: 2

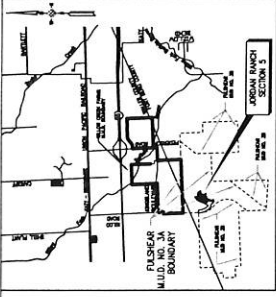
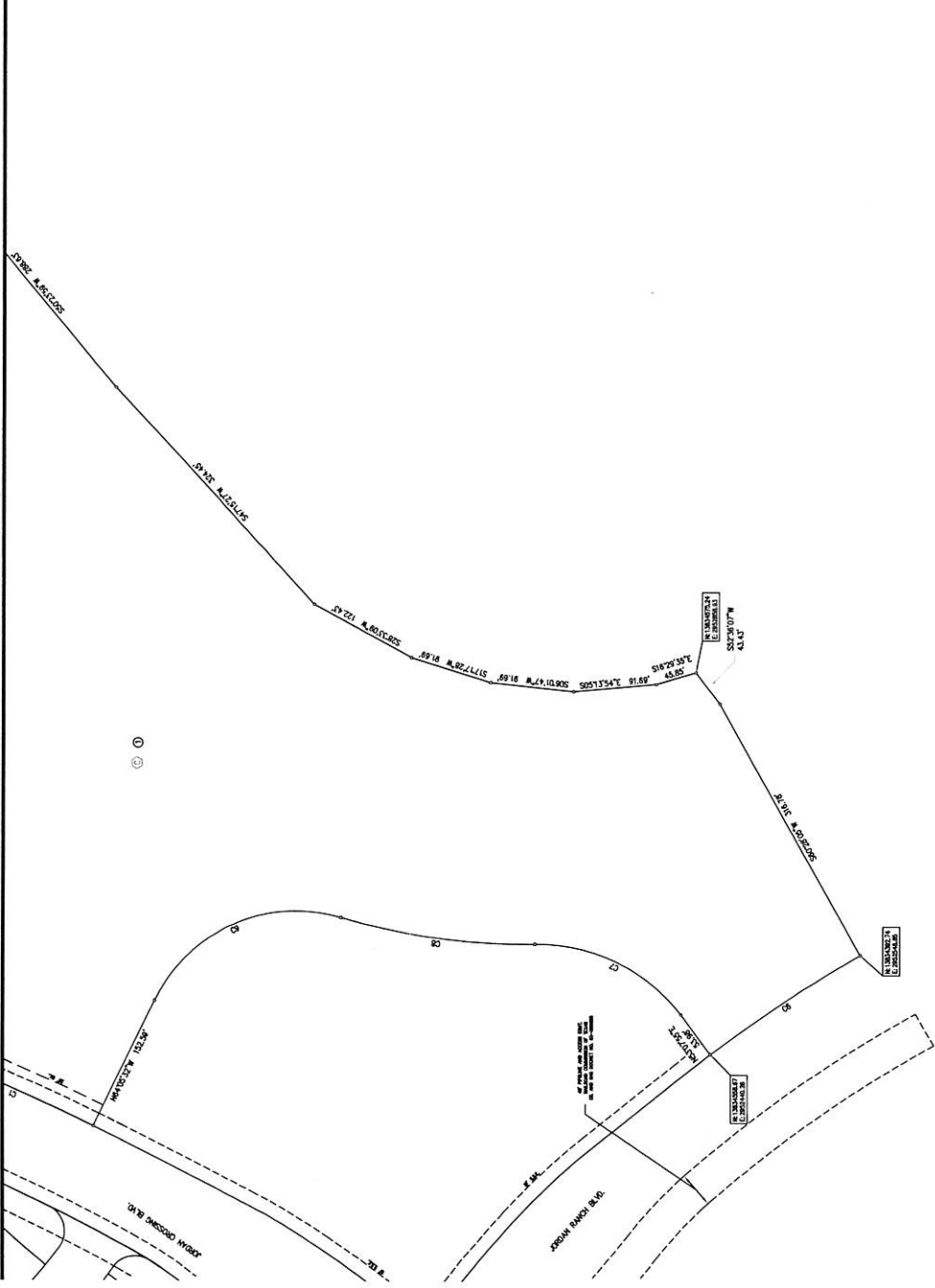
NUMBER OF LOTS: 24

NUMBER OF RESERVES: 4

OWNERS: Fort Bend Jordan Ranch LP

(DEPUTY CLERK)

MATCH LINE SEE SHEET 2



FORT BEND COUNTY KEY MAP NO. 4820A
 COUNTY MAP
 SCALE 1" = 5,000'

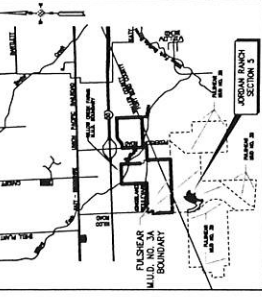
LINE	BEARING	LENGTH
11	S 80° 07' 00" E	188.32
12	S 80° 07' 00" E	188.32
13	S 80° 07' 00" E	188.32
14	S 80° 07' 00" E	188.32
15	S 80° 07' 00" E	188.32
16	S 80° 07' 00" E	188.32
17	S 80° 07' 00" E	188.32
18	S 80° 07' 00" E	188.32

LINE	AREA	PERIMETER	PERIMETER	CHORD BEARING	CHORD DISTANCE
11	1.11	188.32	188.32	S 80° 07' 00" E	188.32
12	1.11	188.32	188.32	S 80° 07' 00" E	188.32
13	1.11	188.32	188.32	S 80° 07' 00" E	188.32
14	1.11	188.32	188.32	S 80° 07' 00" E	188.32
15	1.11	188.32	188.32	S 80° 07' 00" E	188.32
16	1.11	188.32	188.32	S 80° 07' 00" E	188.32
17	1.11	188.32	188.32	S 80° 07' 00" E	188.32
18	1.11	188.32	188.32	S 80° 07' 00" E	188.32

AREA	PERIMETER	CHORD BEARING	CHORD DISTANCE
1	188.32	S 80° 07' 00" E	188.32
2	188.32	S 80° 07' 00" E	188.32
3	188.32	S 80° 07' 00" E	188.32
4	188.32	S 80° 07' 00" E	188.32
5	188.32	S 80° 07' 00" E	188.32
6	188.32	S 80° 07' 00" E	188.32
7	188.32	S 80° 07' 00" E	188.32
8	188.32	S 80° 07' 00" E	188.32
9	188.32	S 80° 07' 00" E	188.32
10	188.32	S 80° 07' 00" E	188.32
11	188.32	S 80° 07' 00" E	188.32
12	188.32	S 80° 07' 00" E	188.32
13	188.32	S 80° 07' 00" E	188.32
14	188.32	S 80° 07' 00" E	188.32
15	188.32	S 80° 07' 00" E	188.32
16	188.32	S 80° 07' 00" E	188.32
17	188.32	S 80° 07' 00" E	188.32
18	188.32	S 80° 07' 00" E	188.32

FINAL PLAT OF
JORDAN RANCH SEC 5
 24.951 ACRES

H. & T. C. R. CO. SURVEY SECTION 105-A-261
 FORT BEND COUNTY, TEXAS
 24 LOTS 2 BLOCKS 4 RESERVES
 OWNER: FORT BEND JORDAN RANCH LP
 ENGINEER: **IDS Engineering Group**
 15155 Katy Freeway, Suite 200
 Houston, Texas 77050
 OCTOBER 2015 10-000-000-244-025-01 SHEET 1 OF 4



FORT BEND COUNTY KEY MAP NO. 482M
 COUNTY MAP
 SCALE 1" = 5,000'



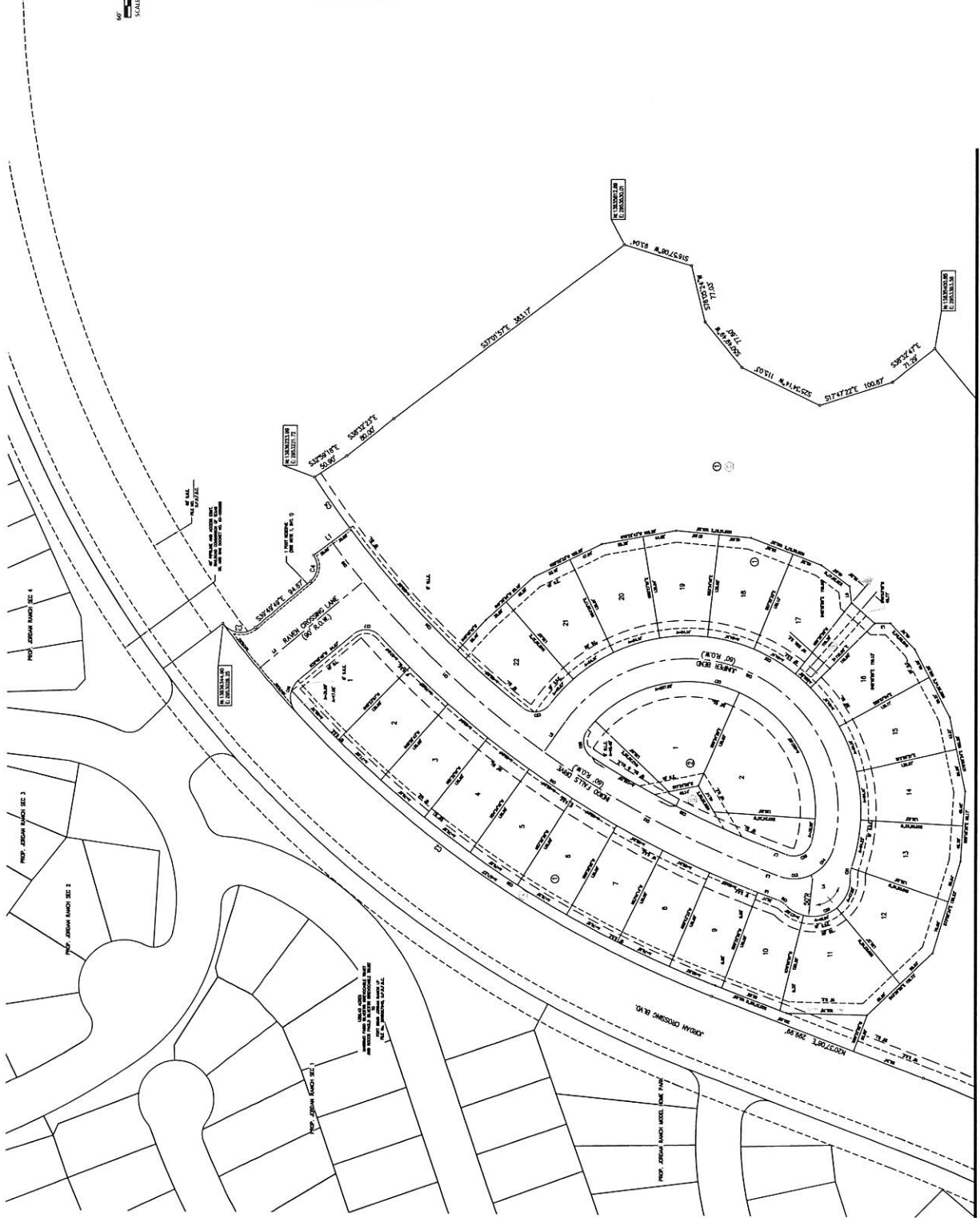
LINE	BEARING	LENGTH	ADJACENT	ADJACENT BEARING	CHORD BEARING	CHORD DISTANCE
C1	S 71° 50' 00" E	188.37	S 84° 00' 00" E	S 87° 15' 00" E	S 84° 00' 00" E	188.37
C2	S 23° 42' 00" E	140.00	S 43° 17' 00" E	S 43° 17' 00" E	S 23° 42' 00" E	140.00
C3	S 87° 00' 00" E	24.00	S 87° 00' 00" E	S 87° 00' 00" E	S 87° 00' 00" E	24.00
C4	S 87° 00' 00" E	24.00	S 87° 00' 00" E	S 87° 00' 00" E	S 87° 00' 00" E	24.00
C5	S 87° 00' 00" E	24.00	S 87° 00' 00" E	S 87° 00' 00" E	S 87° 00' 00" E	24.00
C6	S 87° 00' 00" E	24.00	S 87° 00' 00" E	S 87° 00' 00" E	S 87° 00' 00" E	24.00
C7	S 87° 00' 00" E	24.00	S 87° 00' 00" E	S 87° 00' 00" E	S 87° 00' 00" E	24.00
C8	S 87° 00' 00" E	24.00	S 87° 00' 00" E	S 87° 00' 00" E	S 87° 00' 00" E	24.00
C9	S 87° 00' 00" E	24.00	S 87° 00' 00" E	S 87° 00' 00" E	S 87° 00' 00" E	24.00
C10	S 87° 00' 00" E	24.00	S 87° 00' 00" E	S 87° 00' 00" E	S 87° 00' 00" E	24.00
C11	S 87° 00' 00" E	24.00	S 87° 00' 00" E	S 87° 00' 00" E	S 87° 00' 00" E	24.00
C12	S 87° 00' 00" E	24.00	S 87° 00' 00" E	S 87° 00' 00" E	S 87° 00' 00" E	24.00
C13	S 87° 00' 00" E	24.00	S 87° 00' 00" E	S 87° 00' 00" E	S 87° 00' 00" E	24.00
C14	S 87° 00' 00" E	24.00	S 87° 00' 00" E	S 87° 00' 00" E	S 87° 00' 00" E	24.00
C15	S 87° 00' 00" E	24.00	S 87° 00' 00" E	S 87° 00' 00" E	S 87° 00' 00" E	24.00
C16	S 87° 00' 00" E	24.00	S 87° 00' 00" E	S 87° 00' 00" E	S 87° 00' 00" E	24.00
C17	S 87° 00' 00" E	24.00	S 87° 00' 00" E	S 87° 00' 00" E	S 87° 00' 00" E	24.00
C18	S 87° 00' 00" E	24.00	S 87° 00' 00" E	S 87° 00' 00" E	S 87° 00' 00" E	24.00
C19	S 87° 00' 00" E	24.00	S 87° 00' 00" E	S 87° 00' 00" E	S 87° 00' 00" E	24.00
C20	S 87° 00' 00" E	24.00	S 87° 00' 00" E	S 87° 00' 00" E	S 87° 00' 00" E	24.00
C21	S 87° 00' 00" E	24.00	S 87° 00' 00" E	S 87° 00' 00" E	S 87° 00' 00" E	24.00
C22	S 87° 00' 00" E	24.00	S 87° 00' 00" E	S 87° 00' 00" E	S 87° 00' 00" E	24.00
C23	S 87° 00' 00" E	24.00	S 87° 00' 00" E	S 87° 00' 00" E	S 87° 00' 00" E	24.00
C24	S 87° 00' 00" E	24.00	S 87° 00' 00" E	S 87° 00' 00" E	S 87° 00' 00" E	24.00
C25	S 87° 00' 00" E	24.00	S 87° 00' 00" E	S 87° 00' 00" E	S 87° 00' 00" E	24.00
C26	S 87° 00' 00" E	24.00	S 87° 00' 00" E	S 87° 00' 00" E	S 87° 00' 00" E	24.00
C27	S 87° 00' 00" E	24.00	S 87° 00' 00" E	S 87° 00' 00" E	S 87° 00' 00" E	24.00
C28	S 87° 00' 00" E	24.00	S 87° 00' 00" E	S 87° 00' 00" E	S 87° 00' 00" E	24.00
C29	S 87° 00' 00" E	24.00	S 87° 00' 00" E	S 87° 00' 00" E	S 87° 00' 00" E	24.00
C30	S 87° 00' 00" E	24.00	S 87° 00' 00" E	S 87° 00' 00" E	S 87° 00' 00" E	24.00
C31	S 87° 00' 00" E	24.00	S 87° 00' 00" E	S 87° 00' 00" E	S 87° 00' 00" E	24.00
C32	S 87° 00' 00" E	24.00	S 87° 00' 00" E	S 87° 00' 00" E	S 87° 00' 00" E	24.00
C33	S 87° 00' 00" E	24.00	S 87° 00' 00" E	S 87° 00' 00" E	S 87° 00' 00" E	24.00
C34	S 87° 00' 00" E	24.00	S 87° 00' 00" E	S 87° 00' 00" E	S 87° 00' 00" E	24.00
C35	S 87° 00' 00" E	24.00	S 87° 00' 00" E	S 87° 00' 00" E	S 87° 00' 00" E	24.00
C36	S 87° 00' 00" E	24.00	S 87° 00' 00" E	S 87° 00' 00" E	S 87° 00' 00" E	24.00
C37	S 87° 00' 00" E	24.00	S 87° 00' 00" E	S 87° 00' 00" E	S 87° 00' 00" E	24.00
C38	S 87° 00' 00" E	24.00	S 87° 00' 00" E	S 87° 00' 00" E	S 87° 00' 00" E	24.00
C39	S 87° 00' 00" E	24.00	S 87° 00' 00" E	S 87° 00' 00" E	S 87° 00' 00" E	24.00
C40	S 87° 00' 00" E	24.00	S 87° 00' 00" E	S 87° 00' 00" E	S 87° 00' 00" E	24.00
C41	S 87° 00' 00" E	24.00	S 87° 00' 00" E	S 87° 00' 00" E	S 87° 00' 00" E	24.00
C42	S 87° 00' 00" E	24.00	S 87° 00' 00" E	S 87° 00' 00" E	S 87° 00' 00" E	24.00
C43	S 87° 00' 00" E	24.00	S 87° 00' 00" E	S 87° 00' 00" E	S 87° 00' 00" E	24.00
C44	S 87° 00' 00" E	24.00	S 87° 00' 00" E	S 87° 00' 00" E	S 87° 00' 00" E	24.00
C45	S 87° 00' 00" E	24.00	S 87° 00' 00" E	S 87° 00' 00" E	S 87° 00' 00" E	24.00
C46	S 87° 00' 00" E	24.00	S 87° 00' 00" E	S 87° 00' 00" E	S 87° 00' 00" E	24.00
C47	S 87° 00' 00" E	24.00	S 87° 00' 00" E	S 87° 00' 00" E	S 87° 00' 00" E	24.00
C48	S 87° 00' 00" E	24.00	S 87° 00' 00" E	S 87° 00' 00" E	S 87° 00' 00" E	24.00
C49	S 87° 00' 00" E	24.00	S 87° 00' 00" E	S 87° 00' 00" E	S 87° 00' 00" E	24.00
C50	S 87° 00' 00" E	24.00	S 87° 00' 00" E	S 87° 00' 00" E	S 87° 00' 00" E	24.00

REMARKS	DATE	BY
1. PREPARED BY SURVEYOR		
2. CHECKED BY SURVEYOR		
3. FIELD NOTES BY SURVEYOR		
4. CALCULATED BY SURVEYOR		
5. PLOTTED BY SURVEYOR		
6. REVISIONS		
7. APPROVED BY SURVEYOR		
8. APPROVED BY ENGINEER		

FINAL PLAT OF
JORDAN RANCH SEC 5
 24.951 ACRES

H & T C R R CO. SURVEY SECTION 5, A.261
 FORT BEND COUNTY, TEXAS
 24 LOTS 2 BLOCKS 4 RESERVES
 OWNER: FORT BEND JORDAN RANCH LP
 ENGINEER: **IDS Engineering Group**

IDS Engineering Group
 13333 Katy Road, Suite 100
 Houston, TX 77025
 OCTOBER 2015 IDS 1508 NO. 244 031-01 SHEET 2 OF 3



MATCH LINE SEE SHEET 3