

PLAT RECORDING SHEET

PLAT NAME: Jordan Ranch, Sec. 3

PLAT NO: _____

ACREAGE: 12.875

LEAGUE: H. & T.C.R.R. Co. Survey, Section 105

ABSTRACT NUMBER: 261

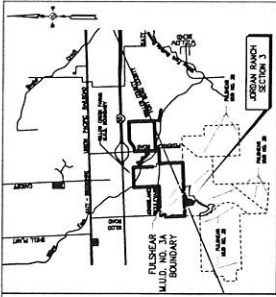
NUMBER OF BLOCKS: 2

NUMBER OF LOTS: 50

NUMBER OF RESERVES: 3

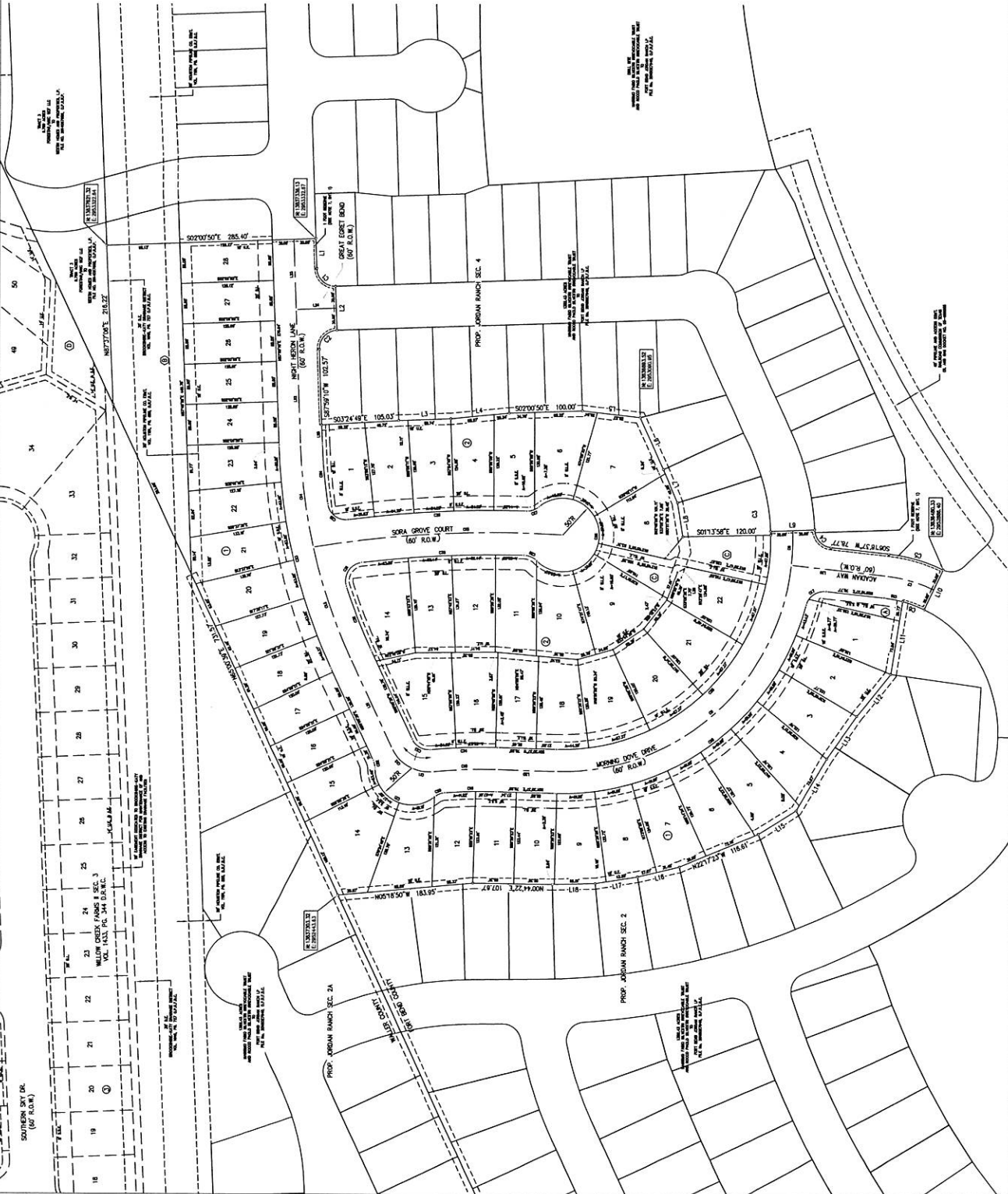
OWNERS: Fort Bend Jordan Ranch LP

(DEPUTY CLERK)



FORT BEND COUNTY KEY MAP NO. 482M
 COUNTY MAP
 SCALE 1" = 5,000'

LINE NO.	LINE TYPE	START POINT	END POINT	LENGTH	BEARING	AREA
1
2
3
4
5
6
7
8
9
10
11
12
13
14
15
16
17
18
19
20
21
22
23
24
25
26
27
28
29
30
31
32
33
34
35
36
37
38
39
40
41
42
43
44
45
46
47
48
49
50
51
52
53
54
55
56
57
58
59
60
61
62
63
64
65
66
67
68
69
70
71
72
73
74
75
76
77
78
79
80
81
82
83
84
85
86
87
88
89
90
91
92
93
94
95
96
97
98
99
100



FINAL PLAN OF
JORDAN RANCH SEC 3
 12.875 ACRES

H & F C R R CO. MAPS & SURVEY, SECTION 109-A-201
 FORT BEND COUNTY, TEXAS

50 LOTS 2 BLOCKS 3 RESERVES
 OWNER: FORT BEND JORDAN RANCH LP

ENGINEER: **IDS Engineering Group**

OCTOBER 2015 10N10W04 1210010101 SHEET 1 OF 1