

PLAT RECORDING SHEET

PLAT NAME: Jordan Ranch, Sec. 1

PLAT NO: _____

ACREAGE: 13.180

LEAGUE: H. & T.C.R.R. Co. Survey, Section 105

ABSTRACT NUMBER: 261

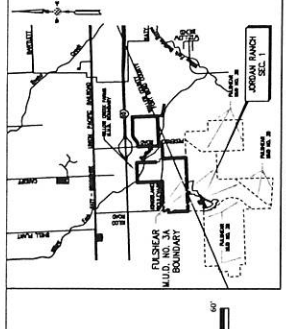
NUMBER OF BLOCKS: 2

NUMBER OF LOTS: 40

NUMBER OF RESERVES: 3

OWNERS: Fort Bend Jordan Ranch LP

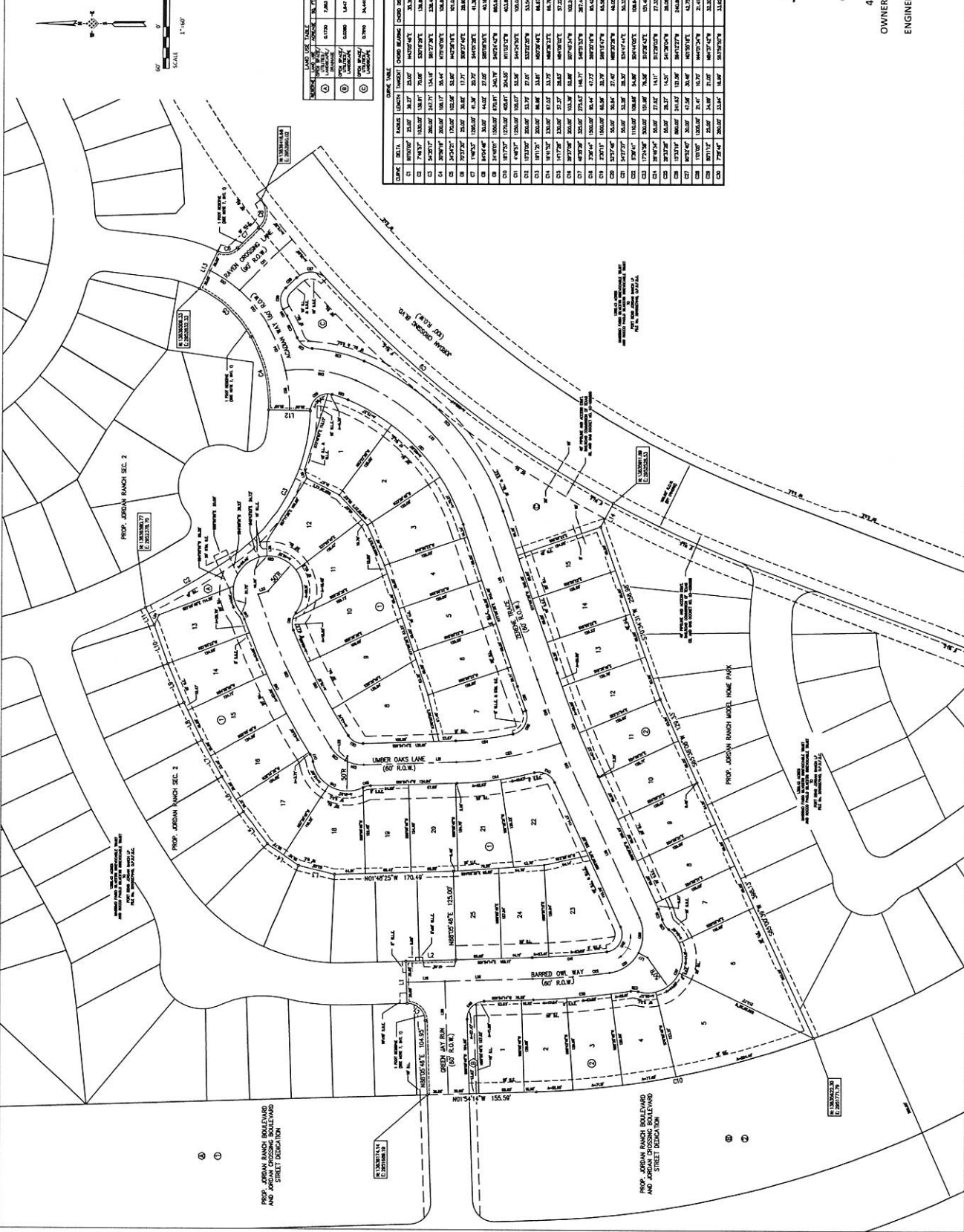
(DEPUTY CLERK)



VICINITY MAP
 FORT BEND COUNTY KEY MAP NO. 4824

SCALE 1" = 5,000'

LINE NUMBER	LINE BEARING	LINE LENGTH	LINE BEARING	LINE LENGTH	LINE BEARING	LINE LENGTH
1	N 89°54'45" E	75.42	S 89°54'45" W	75.42	N 89°54'45" E	75.42
2	N 89°54'45" E	75.42	S 89°54'45" W	75.42	N 89°54'45" E	75.42
3	N 89°54'45" E	75.42	S 89°54'45" W	75.42	N 89°54'45" E	75.42
4	N 89°54'45" E	75.42	S 89°54'45" W	75.42	N 89°54'45" E	75.42
5	N 89°54'45" E	75.42	S 89°54'45" W	75.42	N 89°54'45" E	75.42
6	N 89°54'45" E	75.42	S 89°54'45" W	75.42	N 89°54'45" E	75.42
7	N 89°54'45" E	75.42	S 89°54'45" W	75.42	N 89°54'45" E	75.42
8	N 89°54'45" E	75.42	S 89°54'45" W	75.42	N 89°54'45" E	75.42
9	N 89°54'45" E	75.42	S 89°54'45" W	75.42	N 89°54'45" E	75.42
10	N 89°54'45" E	75.42	S 89°54'45" W	75.42	N 89°54'45" E	75.42
11	N 89°54'45" E	75.42	S 89°54'45" W	75.42	N 89°54'45" E	75.42
12	N 89°54'45" E	75.42	S 89°54'45" W	75.42	N 89°54'45" E	75.42
13	N 89°54'45" E	75.42	S 89°54'45" W	75.42	N 89°54'45" E	75.42
14	N 89°54'45" E	75.42	S 89°54'45" W	75.42	N 89°54'45" E	75.42
15	N 89°54'45" E	75.42	S 89°54'45" W	75.42	N 89°54'45" E	75.42
16	N 89°54'45" E	75.42	S 89°54'45" W	75.42	N 89°54'45" E	75.42
17	N 89°54'45" E	75.42	S 89°54'45" W	75.42	N 89°54'45" E	75.42
18	N 89°54'45" E	75.42	S 89°54'45" W	75.42	N 89°54'45" E	75.42
19	N 89°54'45" E	75.42	S 89°54'45" W	75.42	N 89°54'45" E	75.42
20	N 89°54'45" E	75.42	S 89°54'45" W	75.42	N 89°54'45" E	75.42
21	N 89°54'45" E	75.42	S 89°54'45" W	75.42	N 89°54'45" E	75.42
22	N 89°54'45" E	75.42	S 89°54'45" W	75.42	N 89°54'45" E	75.42
23	N 89°54'45" E	75.42	S 89°54'45" W	75.42	N 89°54'45" E	75.42
24	N 89°54'45" E	75.42	S 89°54'45" W	75.42	N 89°54'45" E	75.42
25	N 89°54'45" E	75.42	S 89°54'45" W	75.42	N 89°54'45" E	75.42



LINE NUMBER	LINE BEARING	LINE LENGTH	LINE BEARING	LINE LENGTH	LINE BEARING	LINE LENGTH
1	N 89°54'45" E	75.42	S 89°54'45" W	75.42	N 89°54'45" E	75.42
2	N 89°54'45" E	75.42	S 89°54'45" W	75.42	N 89°54'45" E	75.42
3	N 89°54'45" E	75.42	S 89°54'45" W	75.42	N 89°54'45" E	75.42
4	N 89°54'45" E	75.42	S 89°54'45" W	75.42	N 89°54'45" E	75.42
5	N 89°54'45" E	75.42	S 89°54'45" W	75.42	N 89°54'45" E	75.42
6	N 89°54'45" E	75.42	S 89°54'45" W	75.42	N 89°54'45" E	75.42
7	N 89°54'45" E	75.42	S 89°54'45" W	75.42	N 89°54'45" E	75.42
8	N 89°54'45" E	75.42	S 89°54'45" W	75.42	N 89°54'45" E	75.42
9	N 89°54'45" E	75.42	S 89°54'45" W	75.42	N 89°54'45" E	75.42
10	N 89°54'45" E	75.42	S 89°54'45" W	75.42	N 89°54'45" E	75.42
11	N 89°54'45" E	75.42	S 89°54'45" W	75.42	N 89°54'45" E	75.42
12	N 89°54'45" E	75.42	S 89°54'45" W	75.42	N 89°54'45" E	75.42
13	N 89°54'45" E	75.42	S 89°54'45" W	75.42	N 89°54'45" E	75.42
14	N 89°54'45" E	75.42	S 89°54'45" W	75.42	N 89°54'45" E	75.42
15	N 89°54'45" E	75.42	S 89°54'45" W	75.42	N 89°54'45" E	75.42
16	N 89°54'45" E	75.42	S 89°54'45" W	75.42	N 89°54'45" E	75.42
17	N 89°54'45" E	75.42	S 89°54'45" W	75.42	N 89°54'45" E	75.42
18	N 89°54'45" E	75.42	S 89°54'45" W	75.42	N 89°54'45" E	75.42
19	N 89°54'45" E	75.42	S 89°54'45" W	75.42	N 89°54'45" E	75.42
20	N 89°54'45" E	75.42	S 89°54'45" W	75.42	N 89°54'45" E	75.42
21	N 89°54'45" E	75.42	S 89°54'45" W	75.42	N 89°54'45" E	75.42
22	N 89°54'45" E	75.42	S 89°54'45" W	75.42	N 89°54'45" E	75.42
23	N 89°54'45" E	75.42	S 89°54'45" W	75.42	N 89°54'45" E	75.42
24	N 89°54'45" E	75.42	S 89°54'45" W	75.42	N 89°54'45" E	75.42
25	N 89°54'45" E	75.42	S 89°54'45" W	75.42	N 89°54'45" E	75.42

FINAL PLAN OF
JORDAN RANCH SEC 1
 13.180 ACRES

H & T C R CO SURVEY SECTION 106-A-261
 FORT BEND COUNTY, TEXAS
 40 LOTS 2 BLOCKS 3 RESERVES
 OWNER: FORT BEND JORDAN RANCH LP

ENGINEER:
IDS Engineering Group
 13333 Katy Road, Suite 100
 Houston, TX 77040
 OCTOBER 2015 GND: 10000-248-041-01 SHEET 2 OF 2