

## STANDARD UTILITY AGREEMENT

U-0008: En-Touch Systems  
County: Fort Bend  
Highway: FM 1093 Westpark Extension

This Agreement by and between the County of Fort Bend, Texas, ("**County**"), and En-Touch Systems, ("**Utility**"), acting by and through its duly authorized representative, shall be effective on the date of approval and execution by and on behalf of the **County**.

**WHEREAS**, the **County** has deemed it necessary to make certain highway improvements as designated by the **County** and approved by the Federal Highway Administration within the limits of the highway as indicated above;

**WHEREAS**, the proposed highway improvements will necessitate the adjustment, removal, and/or relocation of certain facilities of **Utility** as indicated in the following statement of work: relocation of assets (Overhead Facilities) into a predesignated corridor according to the following schedule:

Start Date – January 01, 2015  
(Pending completion of CenterPoint Energy Overhead Relocation)  
Completion Date – February 29, 2016  
(Based on January 1, 2016 Start Date)

**WHEREAS**, Subchapter E of Chapter 203 of the Texas Transportation Code regarding the relocation of utilities does not apply to this Project, but the County wishes to negotiate in good faith and enter into agreements with all affected utility companies for the participation in the costs of the adjustment, removal, and/or relocation of certain facilities as authorized under such subchapter.

**WHEREAS**, the **County**, upon receipt of evidence it deems sufficient, acknowledges **Utility's** interest in certain lands and/or facilities and determined it is appropriate to enter an agreement with **Utility** to govern the terms for participation in the costs of the adjustment, removal, and relocation of certain of its facilities located upon the lands as indicated in the statement of work above.

### NOW, THEREFORE, BE IT AGREED:

The **County** will pay to **Utility** fifty percent (50%) of the documented actual costs incurred for relocation of the overhead utility in adjustment, removal, and/or relocation of **Utility's** facilities up to the amount said costs may be eligible for **County** participation.

All conduct under this agreement, including but not limited to the adjustment, removal and relocation of the facility, the development and reimbursement of costs, any environmental requirements, and retention of records will be in accordance with all applicable federal and state laws, rules and regulations, including, without limitation, the Federal Uniform Relocation Assistance and Real Property Acquisition Policies Act, 42 U.S.C. §§ 4601, et seq., the National Environmental Policy Act, 42 U.S.C. §§ 4231, et seq., the Buy America provisions of 23 U.S.C. § 313 and 23 CFR 635.410, the Utility Relocations, Adjustments, and Reimbursements provisions of 23 CFR 645, Subpart A, and with the Utility Accommodation provisions of 23 CFR 645, Subpart B. **Utility** shall supply, upon request by the **County**, proof of compliance with the aforementioned laws, rules and regulations prior to the commencement of construction.

The **Utility** agrees to develop relocation or adjustment costs by accumulating actual direct and related indirect costs in accordance with a work order accounting procedure prescribed by **County**, or may, with the **County's** approval, accumulate actual direct and related indirect costs in accordance with an established accounting procedure developed by **Utility**. Bills for work hereunder will be submitted to **County** not later than 90 days after completion of the work.

When requested, the **County** will make intermediate payments at not less than monthly intervals to **Utility** when properly billed and such payments will not exceed 90 percent (90%) of the eligible cost as shown in each such billing. Intermediate payments shall not be construed as final payment for any items included in the intermediate payment.

_____	_____	WHP	12/22/15
	Date	Initial	Date
Fort Bend County		En-Touch Systems	

Upon execution of this agreement by both parties hereto, the **County** will, by written notice, authorize the **Utility** to perform such work diligently, and to conclude said adjustment, removal, or relocation by the stated completion date. The completion date shall be extended for delays caused by events outside **Utility's** control, including an event of Force Majeure, which shall include a strike, war or act of war (whether an actual declaration of war is made or not), insurrection, riot, act of public enemy, accident, fire, flood or other act of God, sabotage, or other events, interference by the **County** or any other party with **Utility's** ability to proceed with the relocation, or any other event in which **Utility** has exercised all due care in the prevention thereof so that the causes or other events are beyond the control and without the fault or negligence of **Utility**.

However, for any failure by **Utility** to conclude said adjustment, removal, or relocation by the stated completion date not caused by events outside **Utility's** control, the **County** may elect to: (1) reduce the reimbursement to **Utility** by one percent (1%) each day delayed; or (2) relocate the facility at the sole cost and expense of **Utility**.

The **County** will, upon satisfactory completion of the relocation or adjustment and upon receipt of final billing prepared in an approved form and manner, make payment in the amount of 90 percent (90%) of the eligible costs as shown in the final billing prior to audit and after such audit shall make an additional final payment totaling the reimbursement amount found eligible for **County** reimbursement.

Unless an item below is stricken and initialed by the **County and Utility**, this agreement in its entirety consists of the following:

1. Standard Utility Agreement;
2. Utility Construction Costs (Exhibit "A");
3. Final Plans and Specifications (Exhibit "B");
4. Utility's Schedule of Work and Estimated Date of Completion (Exhibit "C").

All exhibits are included herein as if fully set forth. In the event it is determined that a substantial change from the statement of work contained in this agreement is required, reimbursement therefore shall be limited to costs covered by a modification or amendment of this agreement or a written change or extra work order approved by the **County and Utility**.

This agreement is subject to cancellation by the **County** at any time up to the date that work under this agreement has been authorized and that such cancellation will not create any liability on the part of the **County**. However, the **County** will review and reimburse the **Utility** for eligible costs incurred by the **Utility** in preparation of this Agreement.

The **Utility** acknowledges to and for the benefit of the **County** and State of Texas that it understands the project under this Agreement is eligible for Federal-aid highway funds and as such, requires all of the iron, steel, and manufactured goods used in the project be produced in the United States ("Buy American Requirements") including iron, steel, and manufactured goods provided by the **Utility** pursuant to this Agreement.

The State Auditor may conduct an audit or investigation of any entity receiving funds from the **County** directly under this contract or indirectly through a subcontract under this contract. Acceptance of funds directly under this contract or indirectly through a subcontract under this contract acts as acceptance of the authority of the State Auditor, under the direction of the Legislative Audit Committee, to conduct an audit or investigation in connection with those funds. An entity that is the subject of an audit or investigation must provide the state auditor with access to any information the state auditor considers relevant to the investigation or audit.

The **Utility** by execution of this agreement does not waive any of the rights which **Utility** may have within the limits of the law.

It is expressly understood that the **Utility** conducts the adjustment, removal, or relocation at its own risk, and that Fort Bend County, Texas makes no warranties or representations regarding the existence or location of utilities currently within its right of way.

_____	_____	WAP	12/22/15
	Date	Initial	Date
Fort Bend County		En-Touch Systems	

The signatories to this agreement warrant that each has the authority to enter into this agreement on behalf of the party represented.

**UTILITY**

Utility: En-Touch Systems  
*Name of Utility*

By: Wesley Pennix  
*Authorized Signature*

Wesley Pennix  
*Print or Type Name*

Title: Manager-OSP Engineering

Date: 12/22/15

**EXECUTION RECOMMENDED:**

**COUNTY**

By: \_\_\_\_\_  
*Authorized Signature*

\_\_\_\_\_  
*Print or Type Name*

Title: \_\_\_\_\_

Date: \_\_\_\_\_

\_\_\_\_\_  
Date  
Fort Bend County

WSP 12/22/15  
Initial Date  
En-Touch Systems

# **Exhibit A**

**(9 Pages to Follow)**

## **En-Touch Systems, Inc.**

**Master Contract Pricing Cost Estimate**

# Entouch Systems

**Job Number:** WO15CFB1074  
**Community:** Ft Bend County  
**Section:** FM 1093 Road widening  
**Contractor:** Elite

**Project Description:** Westpark Tollway Extension

Labor	\$37,503.00
NHPL	\$0.00
Eng/Permits	\$13,979.55
Material	\$32,269.81
<b>Total Cost</b>	<b>\$83,752.36</b>

### Exhibit A - Labor

ETS #	Aerial Construction - Fiber Construction	Pricing	Total
Aer-001	<b>Strand</b> - Installation of all strand and hardware for a complete installation. Also includes all anchors, side arms, Bonds, and vertical grounds as required.	\$ 0.30	\$ 4,110.00
Aer-002	<b>Strand - Under 1,000'</b> - Installation of all strand and hardware for a complete installation. all anchors, side arms, Bonds, and vertical grounds as required.	\$ 0.35	\$ -
Aer-003	<b>Lash Fiber</b> - Includes the installation (lash) of up to (2) fiber cables. Includes placement of all verticals. Max 10 poles without a vertical. Includes placement of ID Tags	\$ 0.52	\$ 7,124.00
Aer-004	<b>Lash Fiber under 1,000'</b> - Includes the installation (lash) of up to (2) fiber cables. Includes placement of all verticals. Max 10 poles without a vertical. Includes placement of ID Tags	\$ 0.60	\$ -
Aer-005	<b>Each Additional Fiber</b> - For new strand	\$ 0.23	\$ -
Aer-006	<b>Over lash Fiber</b> - Over lash Installation of a single cable.	\$ 0.60	\$ -
Aer-007	<b>Over lash Additional Fiber</b> - Over lash Installation of each additional cable.	\$ 0.18	\$ -
Aer-008	<b>DE lash/Relash</b> - Includes remove and relash of a single cable	\$ 0.55	\$ -
Aer-009	<b>Tree Trim</b> - Will pay for entire span - Must have pre-approval.	\$ 0.25	\$ -
Aer-010	<b>Lash Storage Loops</b> - Slack to be lashed and stored in snowshoes. - Not included in lash fiber	\$ 75.00	\$ -
Aer-011	<b>Chase Slack Loop</b> -DE lash, Relash, pull slack to new location	\$ 0.75	\$ -
Aer-012	<b>Wreck Out</b> - Includes wreck out and disposal. Contractor keeps all scrap material.	\$ 0.18	\$ 2,700.00
Aer-013	<b>Pole Transfer</b> - Complete transfer included	\$ 31.00	\$ 31.00
Aer-014	<b>Pole Attachment</b>	\$ 15.00	\$ 1,125.00
Aer-015	<b>Install Down Guy</b>	\$ 19.50	\$ 117.00
Aer-016	<b>Remove Down Guy</b>	\$ 12.00	\$ -
Aer-017	<b>Sidewalk Guy</b>	\$ 23.55	\$ -
Aer-018	<b>Place Tree Guard</b>	\$ 3.50	\$ -
Aer-019	<b>Place Overhead Guy</b>	\$ 23.50	\$ -
Aer-020	<b>Remove/replace guy guard</b>	\$ 5.25	\$ -
Aer-021	<b>Place bond not included</b>	\$ 2.75	\$ -
Aer-022	<b>Remove/replace down guy guy.</b>	\$ 15.00	\$ 90.00
Aer-023	<b>Install Anchor</b>	\$ 25.00	\$ 125.00
Aer-024	<b>Install extension arm/standoff</b>	\$ 15.00	\$ -
Aer-025	<b>Re-sag Strand</b>	\$ 0.38	\$ -
Aer-026	<b>Set Class 3 Pole</b>	\$ 425.00	\$ -
Aer-027	<b>Riser Transfer to new pole</b>	\$ 75.00	\$ 75.00
Aer-028	<b>Placement of Snowshoes and repair storage loop.</b> - Not included in lash fiber	\$ 100.00	\$ 400.00

En-Touch Systems, Inc. - Master Contract Pricing

ETS #	Fiber Splicing			
Fib-001	<b>Fusion Splice (1-24)</b> - Includes the installation of all enclosures, end to end testing with documentation. Fiber Cable prep fees not included. <b>USE THIS ON ALL CCR'S</b>	\$	25.00	\$ -
Fib-008	<b>Fusion Splice (25-48)</b> - Includes the installation of all enclosures, end to end testing with documentation. Fiber Cable prep fees not included.	\$	22.00	\$ 0
Fib-009	<b>Fusion Splice (49-96)</b> - Includes the installation of all enclosures, end to end testing with documentation. Fiber Cable prep fees not included.	\$	21.00	\$ 0
Fib-010	<b>Fusion Splice (97-288)</b> - Includes the installation of all enclosures, end to end testing with documentation. Fiber Cable prep fees not included.	\$	18.00	\$ 192
Fib-002	<b>Fiber Cable Prep Fee/Mid Span Entry (This covers entire fiber drop ped fee)</b>	\$	75.00	\$ 4
Fib-003	<b>Enclosure Re-Entry</b>	\$	100.00	\$ 2
Fib-005	<b>Remount Fiber Enclosure</b>	\$	100.00	\$ -
Fib-006	<b>Fiber mapping/Troubleshooting - Per location</b>	\$	50.00	\$ -
ETS #	<b>Underground Construction</b>			
UG-001	<b>Machine Trench 36" Cover</b> - Includes installation of up to (3) cables, mule tape, and locate wire as required. Includes all required bonding and grounding	\$	2.75	\$ -
UG-002	<b>Machine Trench 48" Cover</b> - Includes installation of up to (3) cables, mule tape, and locate wire as required.	\$	3.25	\$ -
UG-003	<b>Hand Dig 36" Cover</b> - Includes installation of up to (3) cables, mule tape, and locate wire as required. Includes all required bonding and grounding	\$	3.50	\$ -
UG-004	<b>Hand Dig 48" Cover</b> - Includes installation of up to (3) cables, mule tape, and locate wire as required.	\$	4.00	\$ -
UG-005	<b>2" Bore</b> - Includes the placement of conduit, mule tape, locate wire, and all bonding and grounding as required.	\$	7.50	\$ 2000
UG-006	<b>4" Bore</b> - Includes the placement of conduit, mule tape, locate wire, and all bonding and grounding as required.	\$	12.00	\$ -
UG-007	Additional Cable In bore	\$	0.55	\$ -
UG-008	<b>Place Large handhole -New Construction</b>	\$	150.00	\$ -
UG-008b	<b>Place Large handhole - On Existing Plant</b>	\$	300.00	\$ -
UG-009	<b>Place Ped</b> - Includes \$5 for XPAK	\$	25.00	\$ -
UG-010	<b>Place Handhole -New Construction</b>	\$	125.00	\$ 5
UG-010b	<b>Place Handhole- On Existing Plant</b>	\$	250.00	\$ -
UG-011	<b>Place Ground Rod</b>	\$	15.00	\$ -
UG-012	<b>Place Sign</b>	\$	8.50	\$ -
UG-013	<b>Pull cable or fiber in conduit</b>	\$	0.55	\$ 2500
UG-014	<b>Place or rod cable or fiber in existing occupied conduit</b>	\$	0.75	\$ -
UG-015	<b>Attach Conduit to Bridge</b>	\$	10.00	\$ -
UG-016	<b>Sod/Tamp labor only</b>	\$	1.50	\$ -
UG-017	<b>Place Locate wire through existing conduit with fiber</b>	\$	0.35	\$ -
UG-018	Dig pit and place coupler to exist. Innerduct	\$	125.00	\$ -
UG-019	Place FDT Cabinet	\$	500.00	\$ -
UG-020	Concrete cutout ( includes concrete saw, removal, hand dig, and concrete replacement)	\$	1,000.00	\$ -
UG-021	Drill bolt pattern holes in HH for FDT cabinet	\$	100.00	\$ -

En-Touch Systems, Inc. - Master Contract Pricing

UG-022	Rod conduit	\$	0.35	\$	-
UG-023	Pull mule tape through conduit	\$	0.18	\$	-
UG-024	CATV Node reentry node splits	\$	550.00	\$	-
	ICTX Splicing and meet point costs	\$	5,000.00	\$	-
<b>ETS #</b>	<b>Miscellaneous</b>				
Misc-001	<b>Underground Set Up Fee</b> - This is the fee for jobs less than 150' in length	\$	75.00	\$	-
Misc-002	<b>Aerial Set Up Fee</b> - This is the fee for jobs less than 350' in length	\$	75.00	\$	-
Misc-003	<b>After hours Fee</b> - This is for scheduled night work/per night for both aerial and u/g	\$	300.00	\$	-
Misc-004	<b>Emergency Call-Out Mobilization for either aerial or U/G crews Fee for after hours</b>	\$	325.00	2	650.00
Misc-005	<b>Emergency Call-Out Mobilization for both aerial and U/G crews Fee for after hours</b>	\$	450.00		
Misc-006	<b>Emergency Call-Out Mobilization Fee for normal business hours for both aerial and u/g.</b>	\$	150.00		
Misc-007	<b>Material Delivery and Pickup from NHPL</b>	\$	200.00		
Misc-008	<b>Material Delivery and Pickup on site</b>	\$	350.00		
<b>ETS #</b>	<b>Hourly - Hourly work charges on invoices must be pre-approved</b>				
HR-001	<b>Supervisor with Truck</b>	\$	52.50		
HR-002	<b>Skilled with Truck</b>	\$	45.00		
HR-003	<b>Skilled</b>	\$	35.00		
HR-004	<b>Common</b>	\$	25.00		
HR-005	<b>Mini Excavator</b>	\$	45.00		
HR-006	<b>Bucket Truck</b>	\$	35.00		
HR-007	<b>Aerial Crew</b>	\$	130.00		
<b>ETS #</b>	<b>Maintenance</b>				
Maint-001	<b>Span Replacements</b> - Includes full trench restoration as needed.	\$	4.75		
Maint-002	<b>Replace Damaged Ped</b>	\$	26.50		
Maint-003	<b>Replace Damaged Fiber Ped</b> - Splicing not included.	\$	125.00		
Maint-004	<b>Trench Restoration</b> - Must be pre-approved by En-Touch	\$	0.75		
Maint-005	<b>Material Costs</b> - Mark up on material provided by contractor		15%		
<b>ETS #</b>	<b>Drop Bury</b>				
Drp-001	<b>Drop Bury</b> - Includes laying out or replacing the drop wire and bury of the wire at a minimum depth of 6". Includes completing all connections, bonding, tagging, and bonding of copper and coax drops. Fiber drops are to be tagged and slack buried.	\$	75.00		
Drp-002	<b>Bore Drop</b> - Price per foot for any drop requiring a bore	\$	8.00		

En-Touch Systems, Inc. - Master Contract Pricing

ETS #	DMARC				
DM-002	Install 1 - 1/4" EMT or PVC -	Labor Only	\$ 4.00	\$	Per Foot
DM-007	Install LB or C-Access for EMT -	Labor Only	\$ 18.00	\$	Each
DM-008	Install 6X6 EMT box	Labor Only	\$ 18.00	\$	Each
DM-009	Install Fiber Drops		\$ 95.00	\$	
DM-003	Drill Concrete Wall - Upt to 1-1/4"		\$ 50.00	\$	
DM-004	Drill Concrete Wall - Upt to 2"		\$ 75.00	\$	
DM-005	Mount Large Wall box - Box provided. Installer to provide mounting hardware		\$ 125.00	\$	
DM-006	Install C-Channel and slab for Calsense/Gate ONT or mount to Calsense		\$ 400.00	\$	

\*Mounting Primex type closures is included in splicing and not charged as box mount

Total \$37,503.00

**Total Cost \$37,503.00**

## Exhibit A - NHPL

NHPL	Each/FT	Qty	Total
Joint Trench w/4 Utilities	\$1.20		\$0.00
Joint Trench w/3 Utilities	\$1.30		\$0.00
Joint Trench w/2 Utilities	\$1.40		\$0.00
Joint Trench w/1 Utilities	\$2.75		\$0.00
Joint Bore w/3 Utilities	\$5.25		\$0.00
Joint Bore w/2 Utilities	\$5.50		\$0.00
Joint Trench CATV only - 48"	\$2.95		\$0.00
Hand Dig Trench	\$4.25		\$0.00
Bore & Place CATV only	\$7.25		\$0.00
Place additional CIC	\$0.50		\$0.00
Additional Cable Bore	\$3.00		\$0.00
P/U Material - trip charge	\$260.00		\$0.00
Place Ground Rod	\$20.00		\$0.00
Place Pedestal	\$18.00		\$0.00
Place Hand Hole	\$375.00		\$0.00
Miscellaneous			\$0.00

**\$0.00**

## Exhibit A - Engineering & Permits

	Sub-Total
Aerial	
Buried/Bore No permit	
Bore/Permit required	\$ 1,200.00
County Permits	
Hourly Engineering	
Turn Key Eng. Services	\$ 12,779.55
	\$ 13,979.55

## Exhibit A - Material

GP Item #	Material List	Vendor		Cost	Qty	Total
	<b>FIBER</b>					
FIB000088	12Ct. Fiber-Commscope/KGP	KGP	Per FT	\$0.29		\$0.00
FIB000089	24Ct. Fiber-Commscope/KGP	KGP	Per FT	\$0.37		\$0.00
FIB000090	48Ct. Fiber-Commscope/KGP	KGP	Per FT	\$0.48		\$0.00
FIB000091	96Ct. Fiber-Commscope/KGP	KGP	Per FT	\$0.85		\$0.00
FIB000092	144Ct. Fiber-Commscope/KGP	KGP	Per FT	\$1.24	16200	\$20,088.00
FIB000105	288Ct. Fiber		Per FT	\$2.48		\$0.00
	<b>Conduit</b>					
CON000005	1 1/4" Conduit	CSC	Per FT	\$0.42		\$0.00
CON000006	2" Conduit	CSC	Per FT	\$0.76	2000	\$1,520.00
CON000010	1" Plenum Flex Duct	Graybar	Per FT	\$2.05		\$0.00
	<b>PEDS</b>					
FIB0000145	Clearfield 2 port XPAK	Clearfield	Each	\$52.00		\$0.00
FIB0000146	Clearfield 4 port XPAK	Clearfield	Each	\$66.00		\$0.00
FIB0000147	Charles BD4 FFTH ped	P&T	Each	\$96.40		\$0.00
FIB0000148	Charles BD4 FFTH ped STAKE	P&T	Each	\$7.95		\$0.00
BC000116	Ant Poison 1 per ped & HH (Order for every FTTH Ped)		Each	\$3.62	2	\$7.23
	<b>Handholes</b>					
FIB000086	24X36X36 PC TIER 15 PULL BOX W/COVER <b>SMALL HH</b>	City Build	Each	\$365.00	4	\$1,460.00
FIB000087	30x48x36 PolyConcrete box, open bottom. 2 piece lid <b>LARGE HH</b>	City Build	Each	\$500.00		\$0.00
FIB000009	Fiber Markers - Poly Dome Posts		Each	\$12.00	4	\$48.00
BC000027	Ground Rod		Each	\$7.00	4	\$28.00
BC000025	Gound Rod clamps		Each	\$4.03		\$0.00
	<b>Splice Cases/Trays</b>					
FIB000107	FOSC450-D6-6-NT-0-D3V - KGP <u>Underground (Tyco Splice Case)</u>	KGP	Each	\$316.69		\$0.00
FIB000108	FOSC-ACC-D-TRAY-36-KIT - KGP (Tyco Splice Tray)	KGP	Each	\$20.82		\$0.00
FIB000110	Coyote Closure - Reg 144 ct or less (Aerial)	City Build	Each	\$270.00	2	\$540.00
FIB000109	Coyote Closure - Lg - 288 ct or more (Aerial)	City Build	Each	\$490.00		\$0.00
FIB000135	36ct Splice Tray	City Build	Each	\$36.50	8	\$292.00
FIB000027	Emersen Splice Trays		Each			\$0.00
BC000110	3M Fiber Bonding Clamps	P&T	Each	\$0.79		\$0.00
	<b>Aerial</b>					
AE000001	430 Lashing Wire -2 Per 1000 ft Aerial	P&T	Per Roll	\$9.68	26	\$251.68
AE000002	1/4" Extra High Strength Strand		Per Ft	\$0.12	15200	\$1,824.00
AE000003	5/8" x 14" Machine Bolt (box of 25) (1 per pole)	P&T	Each	\$1.34		\$0.00
AE000004	5/8" x 14" Thimble Eye Bolt (box of 25)	P&T	Each	\$3.40	100	\$340.00
AE000005	5/8" x 16" Machine Bolt (box of 25)	P&T	Each	\$1.55		\$0.00
AE000006	5/8" x 16" Thimble Eye Bolt (box of 25)	P&T	Each	\$3.80		\$0.00
AE000007	2" Square Washer (box of 100) (2 per pole)	P&T	Each	\$0.21	200	\$42.00
AE000008	5/8" Square Nut (box of 100) (1 per pole)	P&T	Each	\$0.19	200	\$38.00
AE000009	3 Bolt B Suspension Clamp (box of 25) (1 per pole)	P&T	Each	\$2.85	100	\$285.00
BC000102	Aerial Fiber markers (4" Oragen Panel- part # APCM40) (1 per pole)	ACP	Each	\$1.55	100	\$155.00
AE000010	1/4" Guy Grip (Dead End) (box of 100)	P&T	Each	\$1.12	100	\$112.00
AE000011	Anchor - 6" 3/4" X 66"	P&T	Each	\$18.89	5	\$94.45
AE000012	Yellow Guy Guard (box of 25)	P&T	Each	\$3.63	10	\$36.30
AE000013	2"x8' Plastic U-guard (box of 100)	P&T	Each	\$8.34	10	\$83.40
AE000014	Bug Nuts (box of 100) (2 per pole)	P&T	Each	\$0.40	200	\$80.00
AE000015	Panduit Support Tie and Spacer (100/bag)	P&T	Each	\$0.84	200	\$168.00
AE000016	Weaver Clamp (box of 100)	P&T	Each	\$4.16	1	\$4.16
AE000020	Aerial Hanger Clamp Kit	P&T	Each	\$21.89	8	\$175.12
AE000021	6 GA Copper Bare Wire (315' roll)	P&T	Each	\$115.92	0.5	\$57.96

AE000022	1/4" x 2" Galvanized Lag Screw	P&T	Each	\$0.20	25	\$5.00
AE000023	1/4 straight splice for strand	P&T	Each	\$10.35	2	\$20.70
AE000024	16" Aluminum Fiber Storage Unit	P&T	Each	\$50.00	4	\$200.00
AE000025	20" Aluminum Fiber Storage Unit	P&T	Each	\$65.28		\$0.00
AE000026	Hook 5/8" Guy w/Integral Lag (Goat Head)	P&T	Each	\$2.76	8	\$22.08
AE000032	Double Arming Bolt - Riser Standoff	City Build	Each	\$5.95	6	\$35.70
AE000033	2 1/4" X 2 1/4" X 1/8" Square Washer - Riser Standoff	City Build	Each	\$0.45	6	\$2.70
AE000034	Unistrut - Galv. 1/5/8" Slotted - Riser Standoff (10')	City Build	Each	\$1.45	6	\$8.70
AE000035	2" Unistrut Pipe Clamp - Riser Standoff	City Build	Each	\$2.96	12	\$35.52
AE000036	1 1/4" Unistrut Pipe Clamp - Riser Standoff	City Build	Each	\$2.69		\$0.00
	<b>EMT</b>					
MISC	<b>1 - 1/4" EMT (Inlcudes connectors/mount brackets/couplers....)</b>	Graybar	Each	\$2.00		\$0.00
DP000151	<b>C-Access for EMT Per Each</b>	Graybar	Each	\$18.32		\$0.00
DP000150	<b>LB or for EMT Per Each</b>	Graybar	Each	\$10.38		\$0.00
DP000127	<b>Install 6X6 EMT box Per Each</b>	Graybar	Each	\$7.62		\$0.00

<b>Cost:</b>	\$28,060.70
<b>Tax/Shipping</b>	\$4,209.11
<b>Total Cost:</b>	<b>\$32,269.81</b>

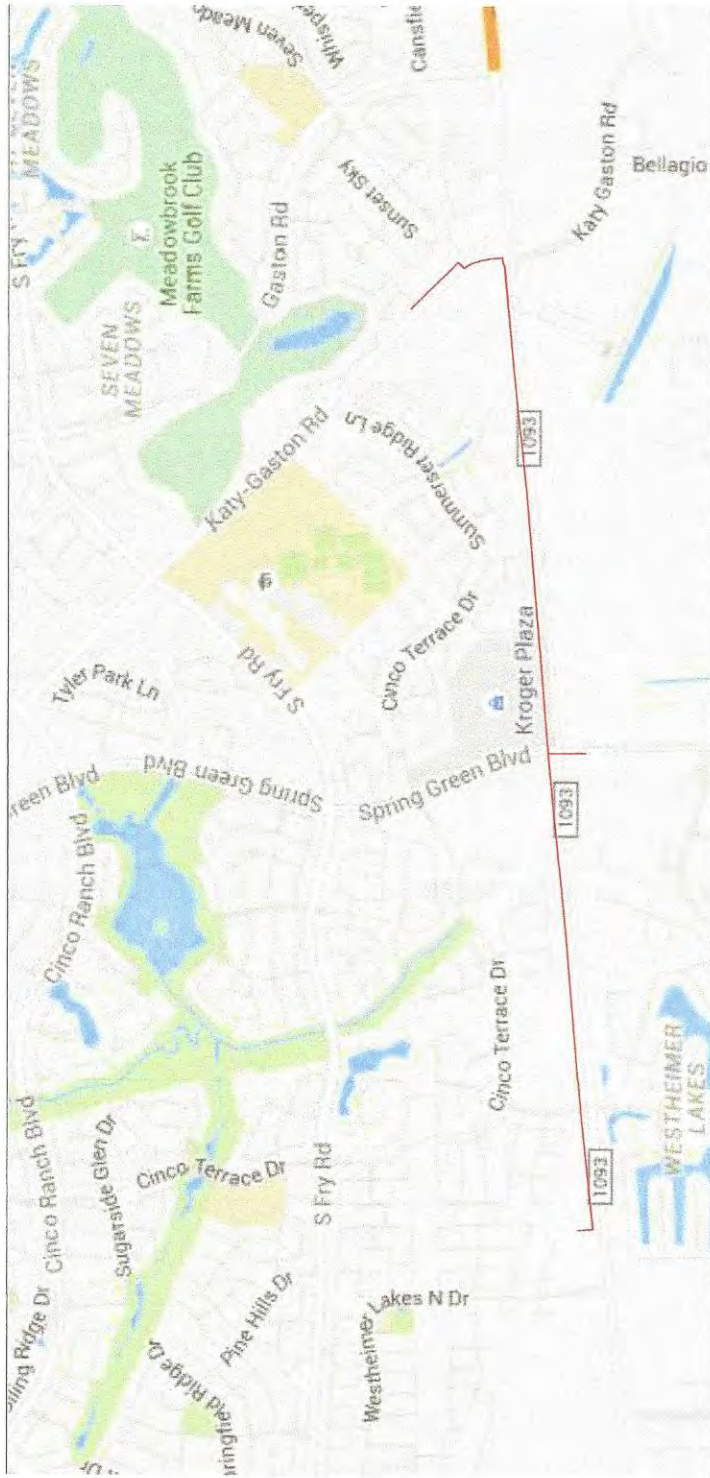
# **Exhibit B**

**(31 Pages to Follow)**

**En-Touch Systems, Inc.**

**West Park Tollway Extension  
Phase I Construction Drawings**

# WESTPARK TOLLWAY EXTENSION - PHASE I



CAUTION!  
HIGH VOLTAGE  
25 KV AERIAL & BURIED  
CENTERPOINT ENERGY

KEY MAP 524F , 524G, 524H AND 525E

**CONTRACTORS:**

THE LOCATIONS OF EXISTING TELEPHONE UTILITIES ARE SHOWN IN AN APPROXIMATE WAY ONLY AND HAVE NOT BEEN INDEPENDENTLY VERIFIED BY THE DINNER OR ITS REPRESENTATIVE. THE CONTRACTOR SHALL VERIFY THE EXACT LOCATION OF ALL EXISTING UTILITIES BEFORE COMMENCING WORKS AND BE RESPONSIBLE FOR ANY AND ALL DAMAGES WHICH MIGHT BE OCCASIONED BY THE CONTRACTOR'S FAILURE TO EXACTLY LOCATE AND PRESERVE ANY AND ALL UTILITIES.

48 HOURS PRIOR TO EXCAVATING FOR NON-TELEPHONE UTILITIES LOCATES CALL 1-800-545-6005

CONTACT STORM WATER SOLUTIONS, 24 HOURS PRIOR TO WORKING IN AREA FOR VEHICLE ACCESS 713-995-1044

**CAUTION:**  
**UNDERGROUND GAS FACILITIES**  
Locations of CENTERPOINT ENERGY main lines (to include Unit Gas Transmission and/or Industrial Gas Supply Corporation where applicable) are shown in an approximate location only. Service lines are usually not shown. The contractor shall contact the Utility Coordinating Committee at (713) 233-6567 or 1-800-699-6344 a minimum of 48 hours prior to construction to have main service lines field located.

**CENTERPOINT ENERGY NOTE:**

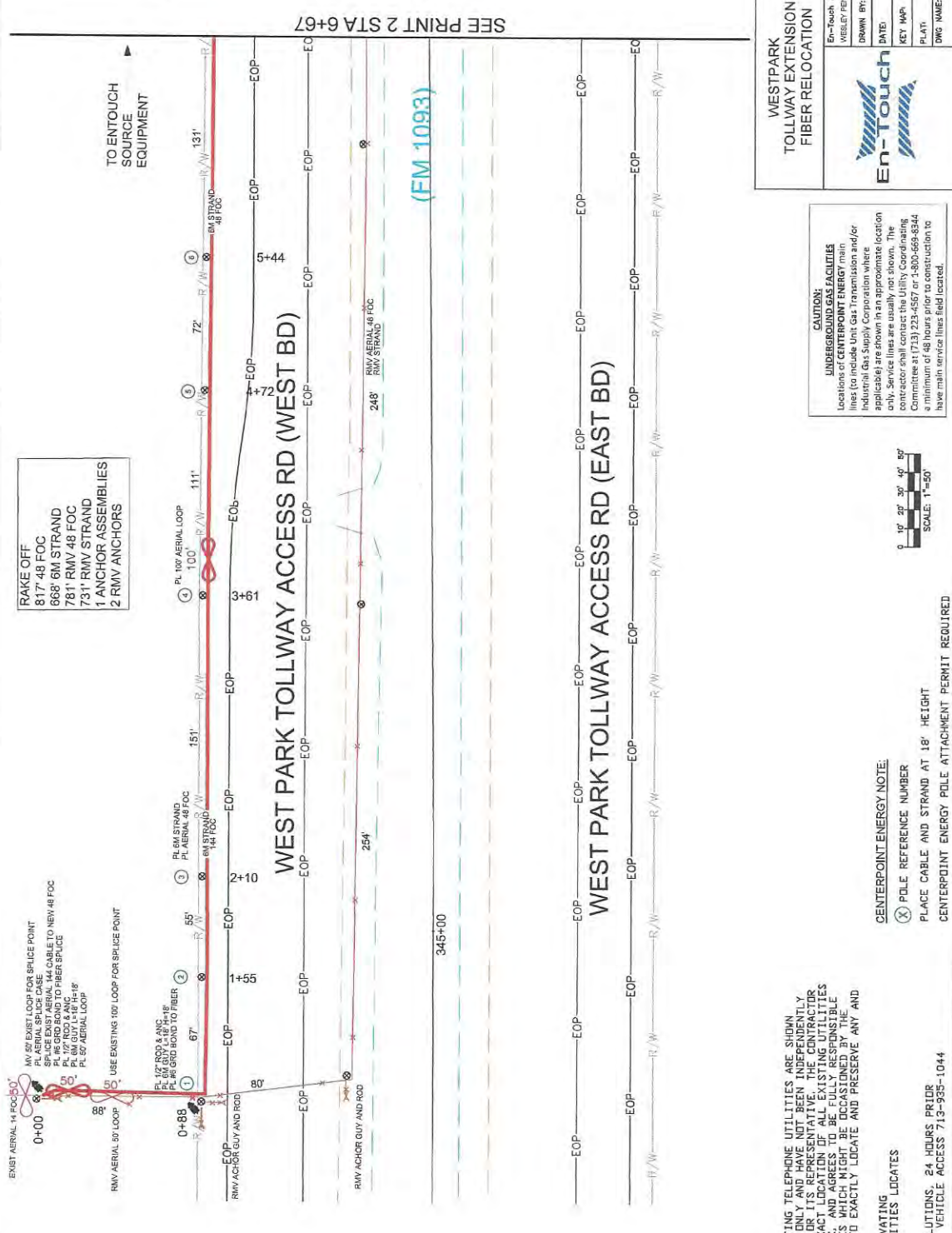
- ⊗ POLE REFERENCE NUMBER
- PLACE CABLE AND STRAND AT 18' HEIGHT
- CENTERPOINT ENERGY POLE ATTACHMENT PERMIT REQUIRED

**WESTPARK TOLLWAY EXTENSION FIBER RELOCATION**



En-Touch Engineer	WESLEY FENIX, Design By: BYERS
DRAWN BY:	BYERS
DATE:	07-09-2015
NET. MPH:	6044
PLAT:	COVER SHEET
DWG. NAME:	WO15CFB1074





- RAKE OFF**
- 817' 48' FOC
  - 668' 6M STRAND
  - 781' RMV 48' FOC
  - 731' RMV STRAND
  - 1 ANCHOR ASSEMBLIES
  - 2 RMV ANCHORS

- EXIST AERIAL 14' FOC @ 0+00**
- MV 60' EXIST LOOP FOR SPLICE POINT
  - PL 16' GND BOND TO NEW 48' FOC
  - PL 16' GND BOND TO FIBER SPLICE
  - PL 16' GND BOND TO RMV 48'
  - PL 57' AERIAL LOOP
- USE EXISTING 100' LOOP FOR SPLICE POINT**
- PL 12' SOA & MS
  - PL 60' GUY & 18\"/>

**CAUTION!**  
HIGH VOLTAGE  
25 KV AERIAL & BURIED  
CENTERPOINT ENERGY

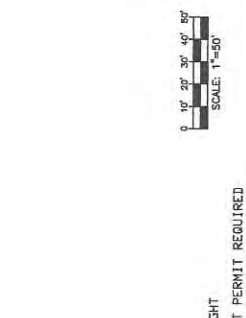
SEE PRINT 2 STA 6+67

**CONTRACTORS:**  
THE LOCATIONS OF EXISTING TELEPHONE UTILITIES ARE SHOWN IN AN APPROXIMATE MANNER ONLY AND HAVE NOT BEEN INDEPENDENTLY VERIFIED BY THE CONTRACTOR. CONTRACTORS SHALL DETERMINE THE EXACT LOCATION OF ALL EXISTING UTILITIES BEFORE COMMENCING WORK, AND AGREES TO BE FULLY RESPONSIBLE FOR ANY AND ALL DAMAGES WHICH MIGHT BE OCCASIONED BY THE CONTRACTOR'S FAILURE TO EXACTLY LOCATE AND PRESERVE ANY AND ALL UTILITIES.  
48 HOURS PRIOR TO EXCAVATING FOR NON-TELEPHONE UTILITIES LOCATES CALL 1-800-545-6005  
CONTACT STORM WATER SOLUTIONS, 24 HOURS PRIOR TO WORKING IN AREA FOR VEHICLE ACCESS 713-935-1044

**WESTPARK TOLLWAY EXTENSION FIBER RELOCATION**

**En-Touch Engineering**  
Wesley Ferrick, D-ASP, EY, BYERS  
DRAWN BY: BYERS  
DATE: 01-09-2016  
KEY MAP: 514F  
PLAT: 01 OF 28  
DWG. NAME: WO15CFB1074

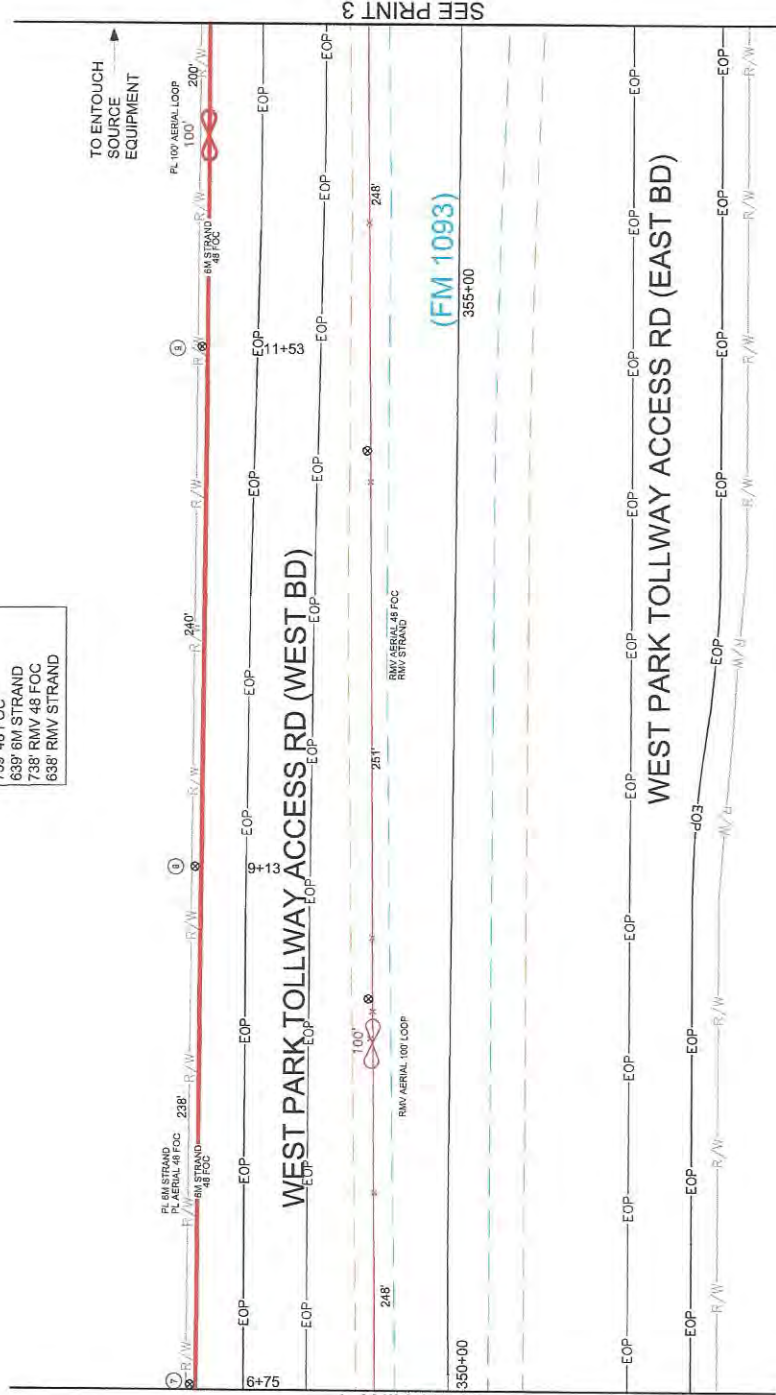
**CAUTION:**  
**UNDERGROUND GAS FACILITIES**  
Locations of CENTERPOINT ENERGY main lines (to include Unit Gas Transmission and/or Industrial Gas Supply Corporation where applicable) are shown in an approximate location only. Service lines are usually not shown. The Contractor shall be responsible for locating a minimum of 48 hours prior to construction to have main service lines field located.



**CENTERPOINT ENERGY NOTE:**  
(X) POLE REFERENCE NUMBER  
PLACE CABLE AND STRAND AT 18\"/>

RAKE OFF  
 739' 48 FOC  
 639' RM STRAND  
 738' RMV 48 FOC  
 638' RMV STRAND

CAUTION!  
 HIGH VOLTAGE  
 25 KV AERIAL & BURIED  
 CENTERPOINT ENERGY



SEE PRINT 3

SEE PRINT 1

**WESTPARK TOLLWAY EXTENSION FIBER RELOCATION**

**En-Touch**

En-Touch Engineer  
 WESLEY PENNA. Design By BYERS

DRWN BY: BYERS  
 DATE: 07-06-2015  
 KEY: MAP: 524F  
 PLAT: 02 OF 28  
 DWG NAME: WO15GFB1074

**CAUTION: UNDERGROUND GAS FACILITIES**

Locations of CENTERPOINT ENERGY main lines (to include Unit Gas Transmission and/or Industrial Gas Supply Corporation where applicable) are shown in an approximate location only. Structures are as they exist. The Contractor shall consult with the Engineering Committee at (713) 223-4657 or 1-800-658-8844 a minimum of 48 hours prior to construction to have main service lines field located.



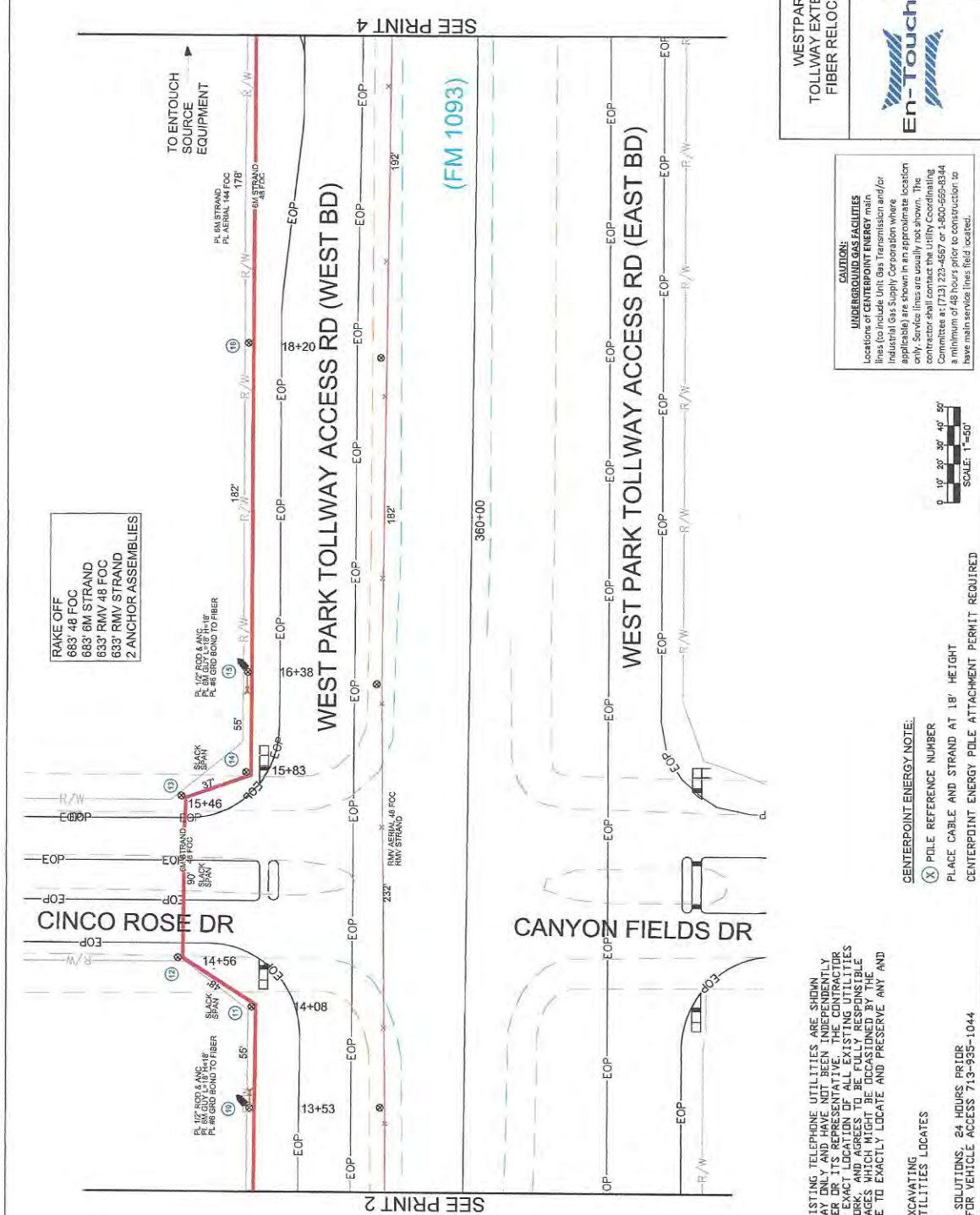
**CONTRACTORS:**  
 THE LOCATIONS OF EXISTING TELEPHONE UTILITIES ARE SHOWN FOR INFORMATION ONLY, AND HAVE NOT BEEN INDEPENDENTLY VERIFIED BY EN-TOUCH. CONTRACTORS SHALL BE RESPONSIBLE FOR DETERMINING THE EXACT LOCATION OF ALL EXISTING UTILITIES BEFORE COMMENCING WORK, AND AGREES TO BE FULLY RESPONSIBLE FOR ANY AND ALL DAMAGES WHICH MIGHT BE OCCASIONED BY THE CONTRACTOR'S FAILURE TO EXACTLY LOCATE AND PRESERVE ANY AND ALL UTILITIES.

48 HOURS PRIOR TO EXCAVATING  
 FOR NON-TELEPHONE UTILITIES LOCATES  
 CALL 1-800-545-6005

CONTACT STORM WATER SOLUTIONS 24 HOURS, 7 DAYS  
 TO WORKING IN AREA FOR VEHICLE ACCESS 713-935-1044

**CENTERPOINT ENERGY NOTE:**  
 (X) POLE REFERENCE NUMBER  
 PLACE CABLE AND STRAND AT 18' HEIGHT  
 CENTERPOINT ENERGY POLE ATTACHMENT PERMIT REQUIRED

CAUTION!  
HIGH VOLTAGE  
25 KV AERIAL & BURIED  
CENTERPOINT ENERGY



RAKE OFF  
683' 48 FOC  
683' 6M STRAND  
633' RMV 48 FOC  
633' RMV STRAND  
2 ANCHOR ASSEMBLIES

PL 1/2" ROD & N.C.  
PL 6M GUY 1/4" 18# R/F  
PL END BOND TO FIBER

SLACK SPAN  
90' GUY STRAND  
90' GUY STRAND

PL 1/2" ROD & N.C.  
PL 6M GUY 1/4" 18# R/F  
PL END BOND TO FIBER

SLACK SPAN  
90' GUY STRAND  
90' GUY STRAND

SEE PRINT 4

SEE PRINT 2

(FM 1093)

**BYERS**  
WESTPARK TOLLWAY EXTENSION  
FIBER RELOCATION

En-Touch Engineer  
Wesley Pennick, Design By BYERS

DATE: 07-09-2016  
KEY MAP: 504E  
PLAT: 03 OF 28  
DWG NAME: WO15CFB1074

**CAUTION:**  
UNDERGROUND GAS FACILITIES  
Locations of CENTERPOINT ENERGY main lines (to include Unit Gas Transmission and/or Industrial Gas Supply Corporation where applicable) are shown in an approximate location only. Services are installed by the Engineering Committee at (713) 229-4657 or 1-800-699-8844 a minimum of 48 hours prior to construction to have main service lines field located.



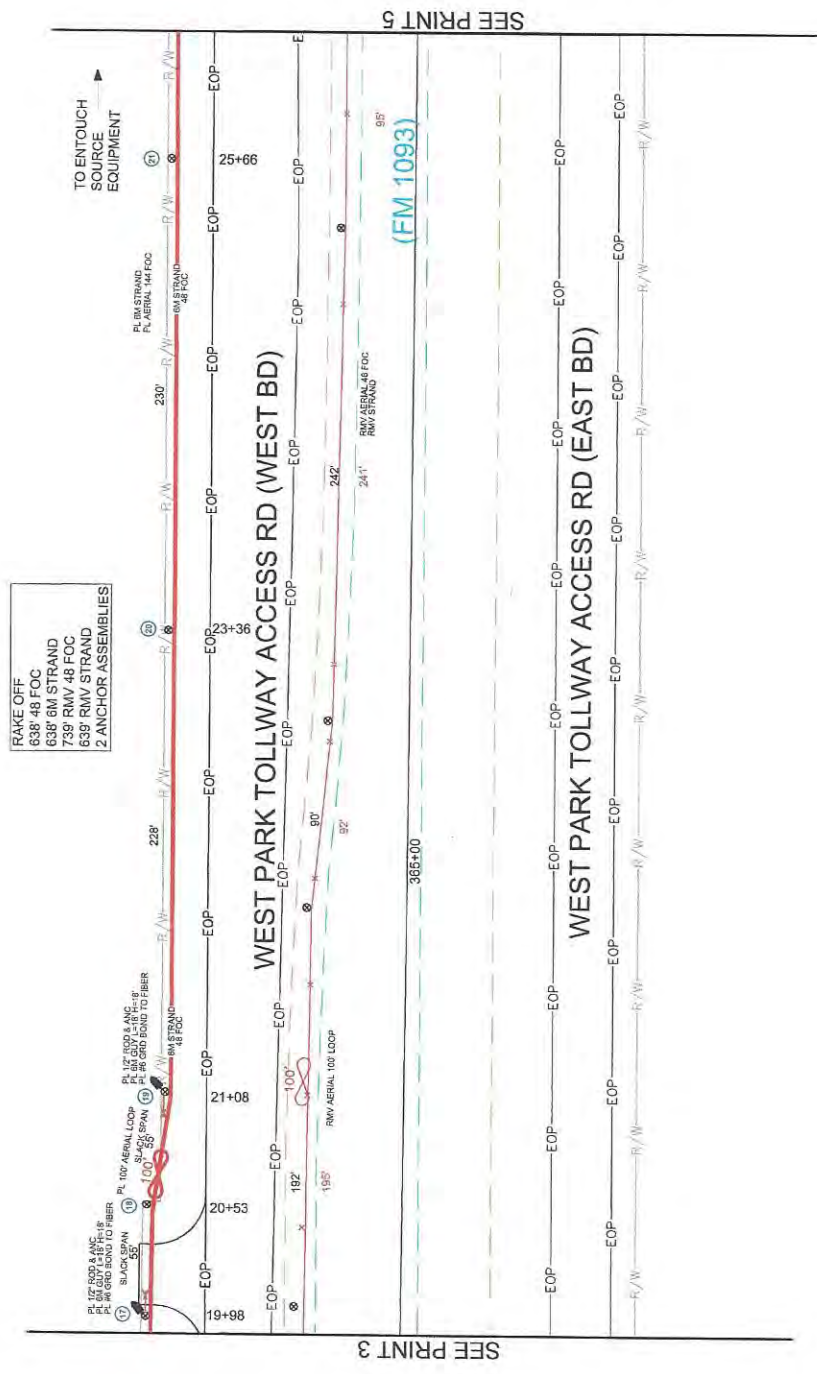
**CONTRACTORS:**  
THE LOCATIONS OF EXISTING TELEPHONE UTILITIES ARE SHOWN IN AN APPROXIMATE MANNER ONLY, AND HAVE NOT BEEN INDEPENDENTLY VERIFIED BY THE CONTRACTOR. THE CONTRACTOR SHALL BE RESPONSIBLE FOR VERIFYING THE EXACT LOCATION OF ALL EXISTING UTILITIES BEFORE COMMENCING WORK, AND AGREES TO BE FULLY RESPONSIBLE FOR ANY AND ALL DAMAGES WHICH MIGHT BE OCCASIONED BY THE CONTRACTOR'S FAILURE TO EXACTLY LOCATE AND PRESERVE ANY AND ALL UTILITIES.

48 HOURS PRIOR TO EXCAVATING FOR NON-TELEPHONE UTILITIES LOCATES CALL 1-800-545-6005

CONTACT STORM WATER SOLUTIONS 24 HOURS FOR SIGNS TO WORKING IN AREA FOR VEHICLE ACCESS 713-935-1044

**CENTERPOINT ENERGY NOTE:**  
⊗ POLE REFERENCE NUMBER  
PLACE CABLE AND STRAND AT 18" HEIGHT  
CENTERPOINT ENERGY POLE ATTACHMENT PERMIT REQUIRED

CAUTION!  
HIGH VOLTAGE  
25 KV REEL & SHIELDED  
CENTERPOINT ENERGY



SEE PRINT 3

SEE PRINT 5

RAKE OFF  
638' 48 FOC  
638' 6M STRAND  
739' RMV 48 FOC  
639' RMV STRAND  
2 ANCHOR ASSEMBLIES

**CONTRACTORS:**  
THE LOCATIONS OF EXISTING TELEPHONE UTILITIES ARE SHOWN IN THIS DRAWING. CONTRACTORS SHALL BE RESPONSIBLE FOR VERIFYING THE EXACT LOCATION OF ALL EXISTING UTILITIES BEFORE COMMENCING WORK, AND AGREES TO BE FULLY RESPONSIBLE FOR ANY AND ALL DAMAGES WHICH MIGHT BE OCCASIONED BY THE CONTRACTOR'S FAILURE TO EXACTLY LOCATE AND PRESERVE ANY AND ALL UTILITIES.  
48 HOURS PRIOR TO EXCAVATING FOR NON-TELEPHONE UTILITIES LOCATES CALL 1-800-545-6005  
CONTACT STORM WATER SOLUTIONS, 24 HOURS 99109 TO WORKING IN AREA FOR VEHICLE ACCESS 715-938-1044

**CENTERPOINT ENERGY NOTE:**  
(X) POLE REFERENCE NUMBER  
PLACE CABLE AND STRAND AT 18' HEIGHT  
CENTERPOINT ENERGY POLE ATTACHMENT PERMIT REQUIRED

**CAUTION:**  
**UNDERGROUND GAS FACILITIES**  
Locations of CENTERPOINT ENERGY main industrial gas supply Corporation where applicable are shown in an approximate location only. Services are usually not shown. The Committee at (713) 233-5557 or 1-800-568-8344 a minimum of 48 hours prior to construction to have main service lines field located.



**En-Touch**  
TOLLWAY EXTENSION  
FIBER RELOCATION

**BYERS**  
WESTPARK  
TOLLWAY EXTENSION  
FIBER RELOCATION

En-Touch Engineer  
WEBLEY PENNAK, CHASE BY BYERS

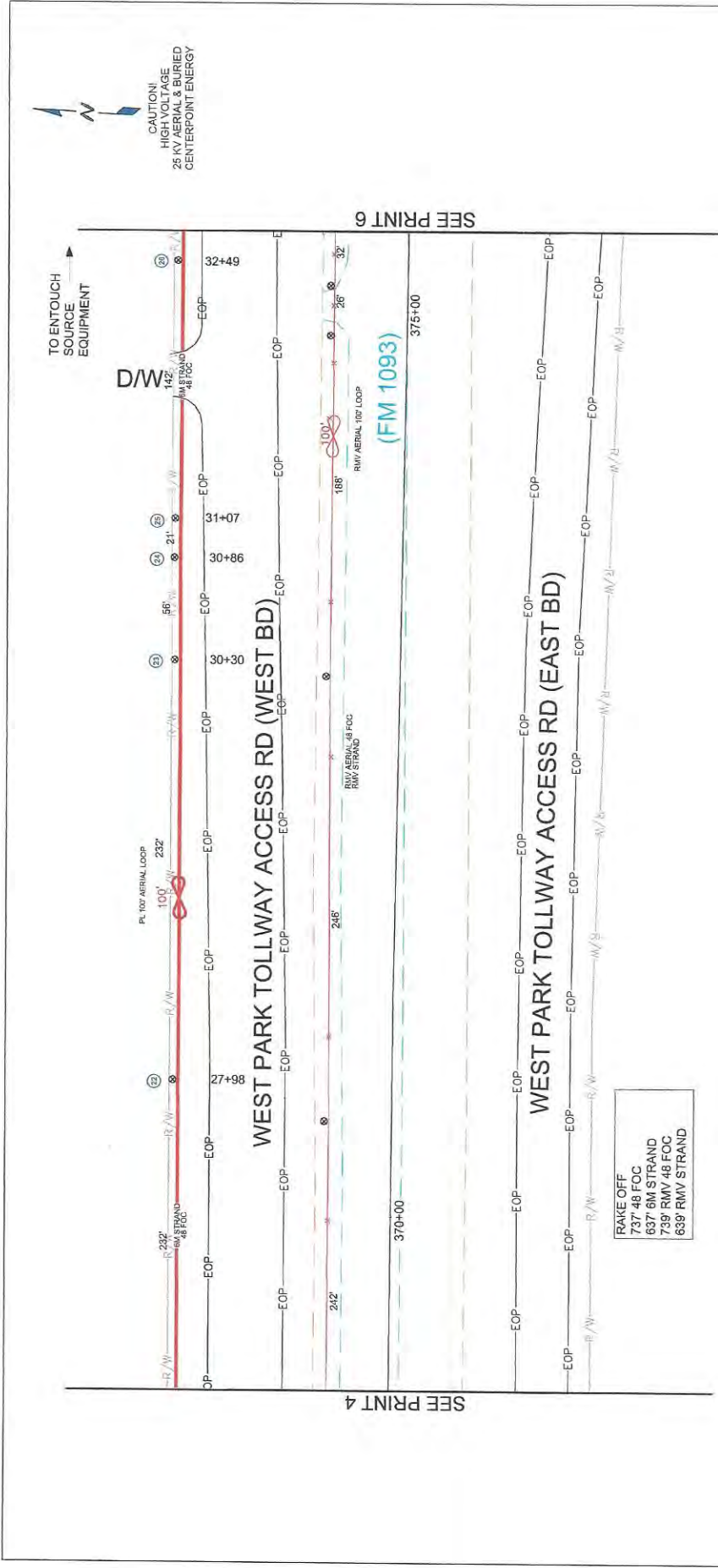
DRAWN BY: BYERS

DATE: 07-06-2015

NET MAP: SDF

PLAT: 04 OF 28

DWG NAME: WO15CFB1074



CAUTION!  
HIGH VOLTAGE  
25 KV AERIAL & BURIED  
CENTERPOINT ENERGY

SEE PRINT 6

SEE PRINT 4

RAKE OFF  
737' 48 FOC  
637' 6M STRAND  
739' RMV/48 FOC  
639' RMV STRAND

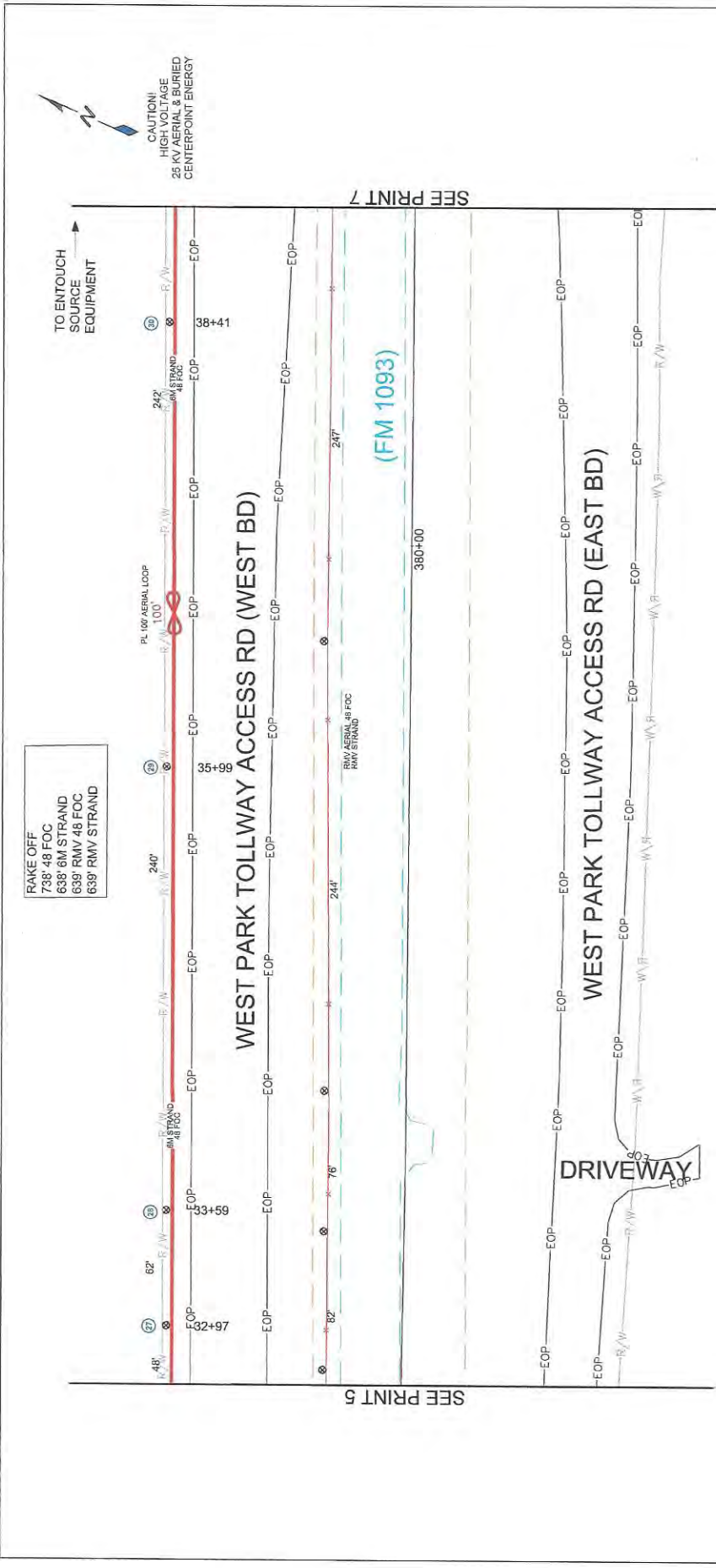
CONTRACTORS:  
THE LOCATIONS OF EXISTING TELEPHONE UTILITIES ARE SHOWN IN AN APPROXIMATE WAY ONLY AND HAVE NOT BEEN INDEPENDENTLY VERIFIED BY THE OWNER OR ITS REPRESENTATIVE. THE CONTRACTOR SHALL DETERMINE THE EXACT LOCATION OF ALL EXISTING UTILITIES BEFORE COMMENCING WORK, AND AGREES TO BE FULLY RESPONSIBLE FOR ANY DAMAGE TO UTILITIES WHICH MIGHT BE OCCASIONED BY THE CONTRACTOR'S FAILURE TO EXACTLY LOCATE AND PRESERVE ANY AND ALL UTILITIES.  
48 HOURS PRIOR TO EXCAVATING FOR NEW TELEPHONE UTILITIES LOCATES  
CALL 1-800-343-6005  
CONTACT STORM WATER SOLUTIONS, 24 HOURS PRIOR TO WORKING IN AREA FOR VEHICLE ACCESS 713-935-1044

CENTERPOINT ENERGY NOTE:  
(X) POLE REFERENCE NUMBER  
PLACE CABLE AND STRAND AT 18' HEIGHT  
CENTERPOINT ENERGY POLE ATTACHMENT PERMIT REQUIRED

CAUTION:  
UNDERGROUND GAS FACILITIES  
Locations of Centerpoint Energy main lines for gas transmission and/or industrial gas service (including applicable) are shown in an appropriate location only. Service lines are usually not shown. The contractor shall contact the Utility Coordinating Committee at (713) 223-4557 or 1-800-659-8344 a minimum of 48 hours prior to construction to have main service lines field located.



	En-Touch Engineer	WESTPARK
	Wesley Fenix, Design By: BYERS	TOLLWAY EXTENSION
	DRAWN BY: BYERS	FIBER RELOCATION
	DATE: 07-26-2015	
	KEY MAP: EDP	
PLAT: 05 OF 28		
DWG NAME: WO15CFB1074		



RAKE OFF  
 738' 48 FOC  
 638' 6M STRAND  
 639' RMV 48 FOC  
 639' RMV STRAND

SEE PRINT 5

SEE PRINT 7

**CONTRACTORS:**

THE LOCATIONS OF EXISTING TELEPHONE UTILITIES ARE SHOWN APPROXIMATELY. CONTRACTORS SHALL VERIFY THE LOCATION OF ALL UTILITIES PRIOR TO EXCAVATION. CONTRACTORS SHALL DETERMINE THE EXACT LOCATION OF ALL EXISTING UTILITIES BEFORE COMMENCING WORK, AND AGREES TO BE FULLY RESPONSIBLE FOR ANY AND ALL DAMAGES WHICH MIGHT BE OCCASIONED BY THE CONTRACTOR'S FAILURE TO EXACTLY LOCATE AND PRESERVE ANY AND ALL UTILITIES.

48 HOURS PRIOR TO EXCAVATING FOR NON-TELEPHONE UTILITIES LOCATES CALL 1-800-545-6005

CONTACT STORM WATER SOLUTIONS, 24 HOURS 95108 TO WORKING IN AREA FOR VEHICLE ACCESS 719-238-1044

**CENTERPOINT ENERGY NOTE:**

- (X) POLE REFERENCE NUMBER
- PLACE CABLE AND STRAND AT 18' HEIGHT
- CENTERPOINT ENERGY POLE ATTACHMENT PERMIT REQUIRED

**CAUTION:**  
**UNDERGROUND GAS FACILITIES**  
 Locations of CENTERPOINT ENERGY main lines (to include Unit Gas Transmission and/or Industrial Gas Supply Corporation where appropriate) are shown in red on this plan. The contractor shall contact the Utility Coordinating Committee at (713) 233-4567 or 1-800-669-8344 a minimum of 48 hours prior to construction to have main service lines field located.



**WESTPARK TOLLWAY EXTENSION FIBER RELOCATION**



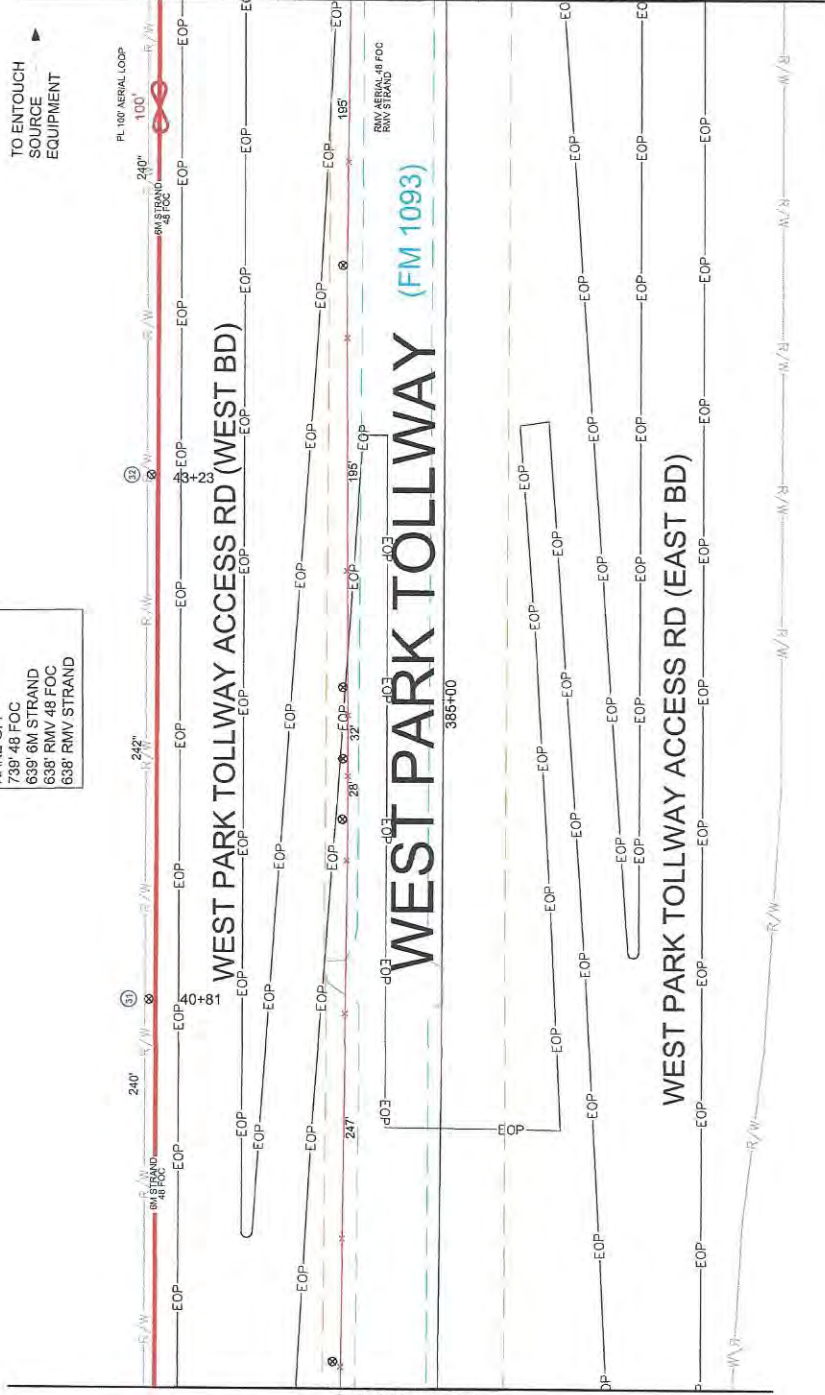
En-Touch Engineer	WESLEY FERRIS, Design By BYERS
DRAWN BY:	BYERS
DATE:	07-06-2015
KEY MAP:	5540
PLAT:	09 OF 28
DWG. NAME:	WO15CFB1074



**CAUTION:**  
 HIGH VOLTAGE  
 25 KV AERIAL & BURIED  
 CENTERPOINT ENERGY

RAKE OFF  
 739' 48 FOC  
 639' 6M STRAND  
 638' RMV/48 FOC  
 638' RMV STRAND

CAUTION!  
 HIGH VOLTAGE  
 25 KV AERIAL & BURIED  
 CENTERPOINT ENERGY



CONTRACTORS:  
 THE LOCATIONS OF EXISTING TELEPHONE UTILITIES ARE SHOWN IN AN APPROXIMATE MANNER ONLY AND HAVE NOT BEEN FULLY VERIFIED BY THE OWNER OR ITS REPRESENTATIVE. THE CONTRACTOR SHALL DETERMINE THE EXACT LOCATION OF ALL EXISTING UTILITIES BEFORE COMMENCING WORK, AND AGREES TO BE FULLY RESPONSIBLE FOR ANY AND ALL DAMAGES WHICH MIGHT BE OCCASIONED BY THE CONTRACTOR'S FAILURE TO EXACTLY LOCATE AND PRESERVE ANY AND ALL UTILITIES.

48 HOURS PRIOR TO EXCAVATING FOR NON-TELEPHONE UTILITIES LOCATES CALL 1-800-545-6005

CONTACT STORM WATER SOLUTIONS, 24 HOURS PRIOR TO WORKING IN AREA FOR VEHICLE ACCESS 713-935-1044

CENTERPOINT ENERGY NOTE:  
 (X) POLE REFERENCE NUMBER  
 PLACE CABLE AND STRAND AT 18' HEIGHT  
 CENTERPOINT ENERGY POLE ATTACHMENT PERMIT REQUIRED

CAUTION:  
 UNDERGROUND GAS FACILITIES  
 Locations of CENTERPOINT ENERGY main gas lines and/or Individual Gas Supply Connections and/or applicable are shown in an approximate location only. Service lines are usually not shown. The contractor shall contact the Utility Coordinating Committee at (713) 223-4567 or 1-800-659-8344 a minimum of 48 hours prior to construction to have main service lines field located.

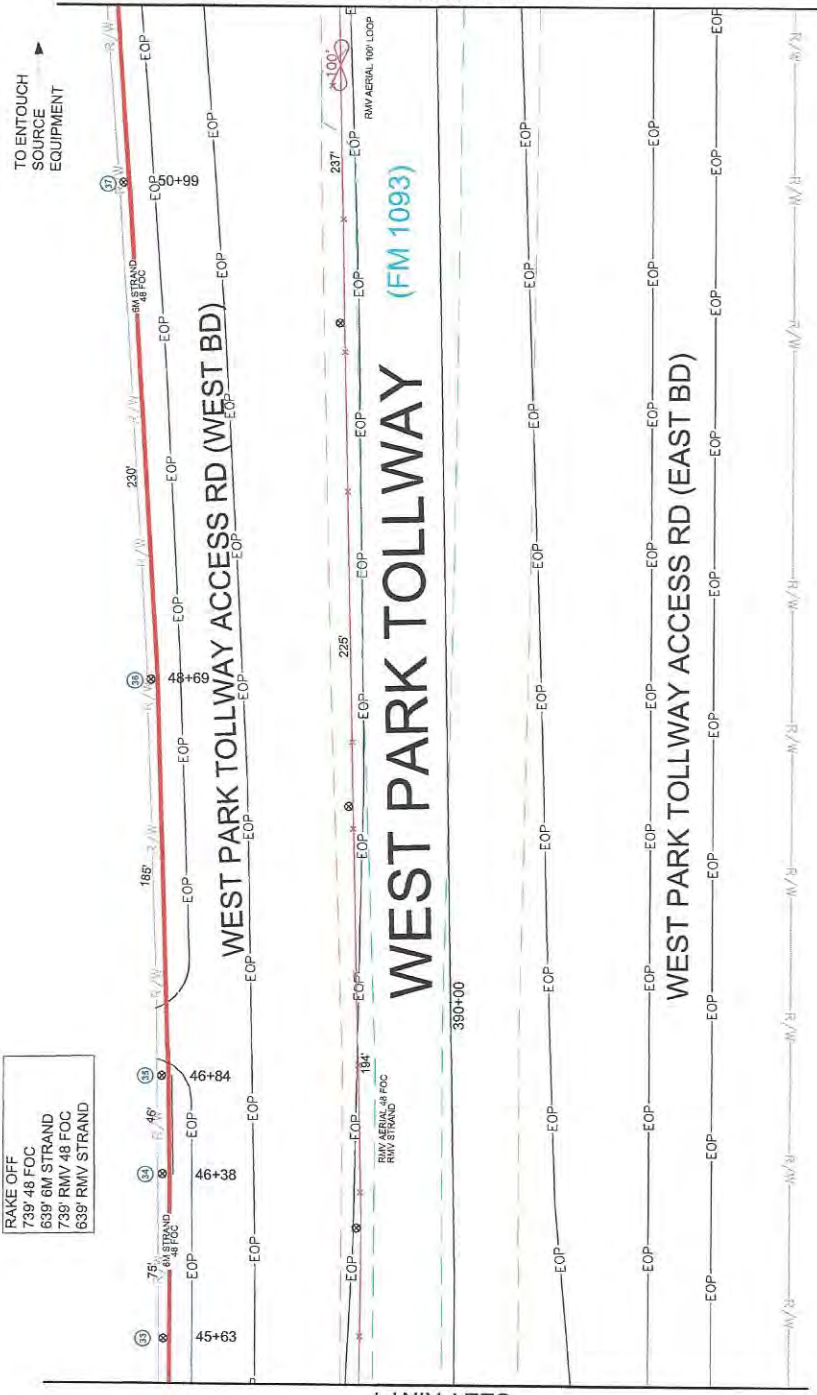


**WESTPARK TOLLWAY EXTENSION FIBER RELOCATION**

**En-Touch**

En-Touch Engineer  
 WESLEY PENNIX, DWIGHT BY BYERS  
 DRAWN BY: BYERS  
 DATE: 07-06-2015  
 KEY MAP: 5240  
 PLAT: 07 OF 28  
 DWG NAME: WO15CFB1074

RAKE OFF  
 739' 48' FOC  
 639' 6M STRAND  
 738' RMV 48 FOC  
 639' RMV STRAND



CAUTION  
 HIGH VOLTAGE  
 25 KV AERIAL & BURIED  
 CENTERPOINT ENERGY

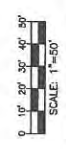
SEE PRINT 7

SEE PRINT 9

**CONTRACTORS:**  
 THE LOCATIONS OF EXISTING TELEPHONE UTILITIES ARE SHOWN BY THE DASHED LINES. CONTRACTORS SHALL BE RESPONSIBLE FOR VERIFYING THE LOCATION OF ALL UTILITIES PRIOR TO EXCAVATION. CONTRACTORS SHALL DETERMINE THE EXACT LOCATION OF ALL EXISTING UTILITIES BEFORE COMMENCING WORK, AND AGREES TO BE FULLY RESPONSIBLE FOR ANY AND ALL DAMAGES WHICH MIGHT BE OCCASIONED BY THE CONTRACTOR'S FAILURE TO EXACTLY LOCATE AND PRESERVE ANY AND ALL UTILITIES.  
 48 HOURS PRIOR TO EXCAVATING  
 FOR NON-TELEPHONE UTILITIES LOCATES  
 CALL 1-800-545-6005  
 CONTACT STORM WATER SOLUTIONS, 24 HOURS, PBIDS  
 TO WORKING IN AREA FOR VEHICLE ACCESS 713-935-1044

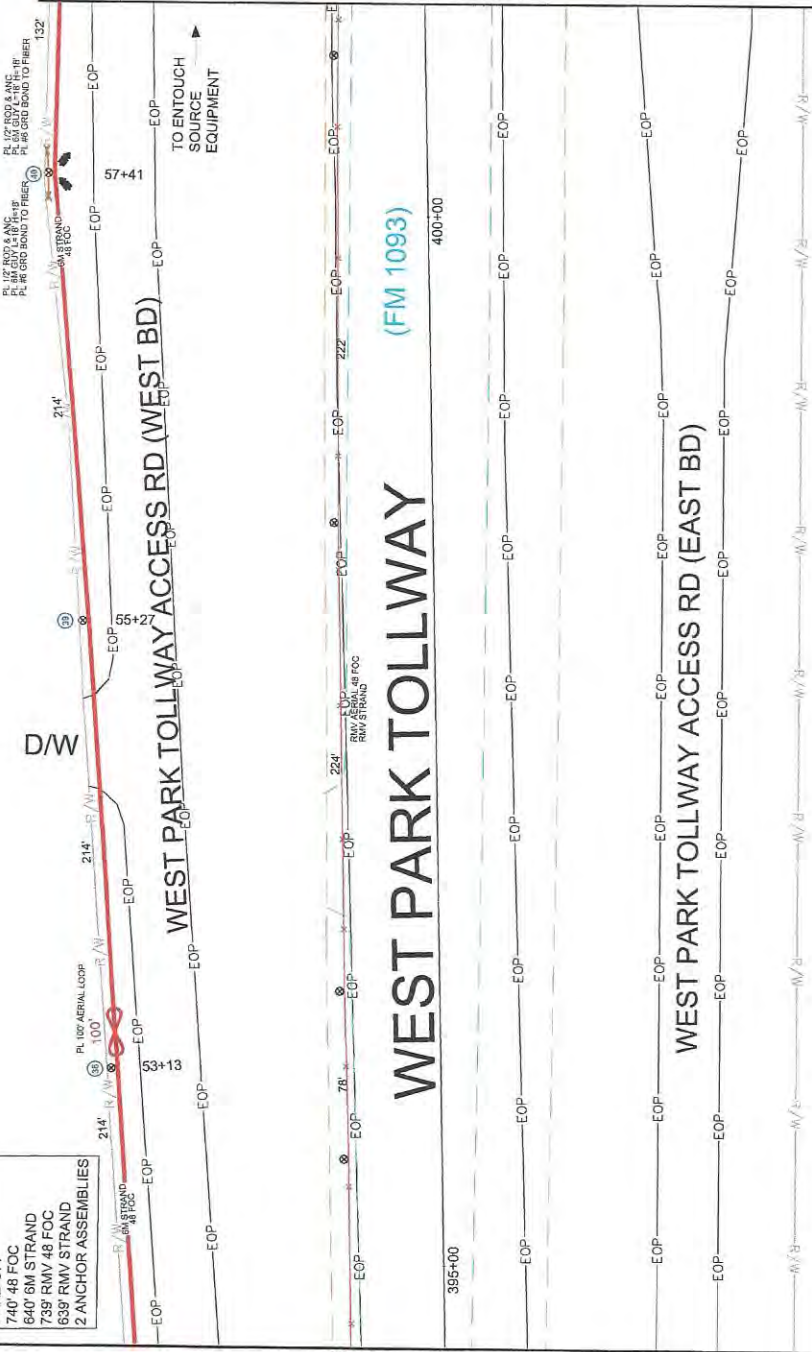
**CENTERPOINT ENERGY NOTE:**  
 (X) POLE REFERENCE NUMBER  
 PLACE CABLE AND STRAND AT 18' HEIGHT  
 CENTERPOINT ENERGY POLE ATTACHMENT PERMIT REQUIRED

**CAUTION**  
**UNDERGROUND GAS FACILITIES**  
 Locations of CENTERPOINT ENERGY main lines to include Unit Gas Transmission and/or Industrial Gas Supply Corporation, where applicable are shown in an approximate location only. Services are usually indicated by a red 'X' on the drawing. The Engineering Committee at (713) 225-4567 or 1-800-668-8344 a minimum of 48 hours prior to construction to have main service lines field located.



	<b>WESTPARK TOLLWAY EXTENSION FIBER RELOCATION</b>	
	En-Touch Engineer WEGLEY/PERINX, Design By: BYERS	
	DRAWN BY: BYERS	
	DATE: 07-06-2013	
	KEY: RMP: 5340 PLAT: 08 OF 28	
DWG NAME: WO15CFB1074		

RAKE OFF  
 740' 48" FOC  
 640' 6M STRAND  
 738' RMV 48 FOC  
 639' RMV STRAND  
 2 ANCHOR ASSEMBLIES



SEE PRINT 8

# WEST PARK TOLLWAY

(FM 1093)

SEE PRINT 11

CAUTION!  
 HIGH VOLTAGE  
 25 KV AERIAL & BURIED  
 CENTERPOINT ENERGY

**CONTRACTORS:**

THE LOCATIONS OF EXISTING TELEPHONE UTILITIES ARE SHOWN APPROXIMATE ONLY AND HAVE NOT BEEN INDEPENDENTLY VERIFIED. CONTRACTORS SHALL DETERMINE THE EXACT LOCATION OF ALL EXISTING UTILITIES BEFORE COMMENCING WORK, AND AGREES TO BE FULLY RESPONSIBLE FOR ANY AND ALL DAMAGES WHICH MIGHT BE OCCASIONED BY THE CONTRACTOR'S FAILURE TO EXACTLY LOCATE AND PRESERVE ANY AND ALL UTILITIES.

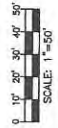
48 HOURS PRIOR TO EXCAVATING FOR NON-TELEPHONE UTILITIES LOCATES CALL 1-800-545-6005

CONTACT STORM WATER SOLUTIONS 24 HOURS PRIOR TO WORKING IN AREA FOR VEHICLE ACCESS 713-553-1044

**CAUTION:**  
 UNDERGROUND GAS FACILITIES  
 Locations of CENTERPOINT ENERGY main lines (to include Unit Gas Transmission and/or Industrial Gas Supply Corporation white applicable) are shown in an approximate location only. Service lines are usually not shown. The contractor shall contact the Utility Coordinating Committee at 713-223-6657 or 1-800-669-6664 to determine the location of gas facilities to construction to have main service lines field located.

**CENTERPOINT ENERGY NOTE:**

- (X) POLE REFERENCE NUMBER
- PLACE CABLE AND STRAND AT 18" HEIGHT
- CENTERPOINT ENERGY POLE ATTACHMENT PERMIT REQUIRED



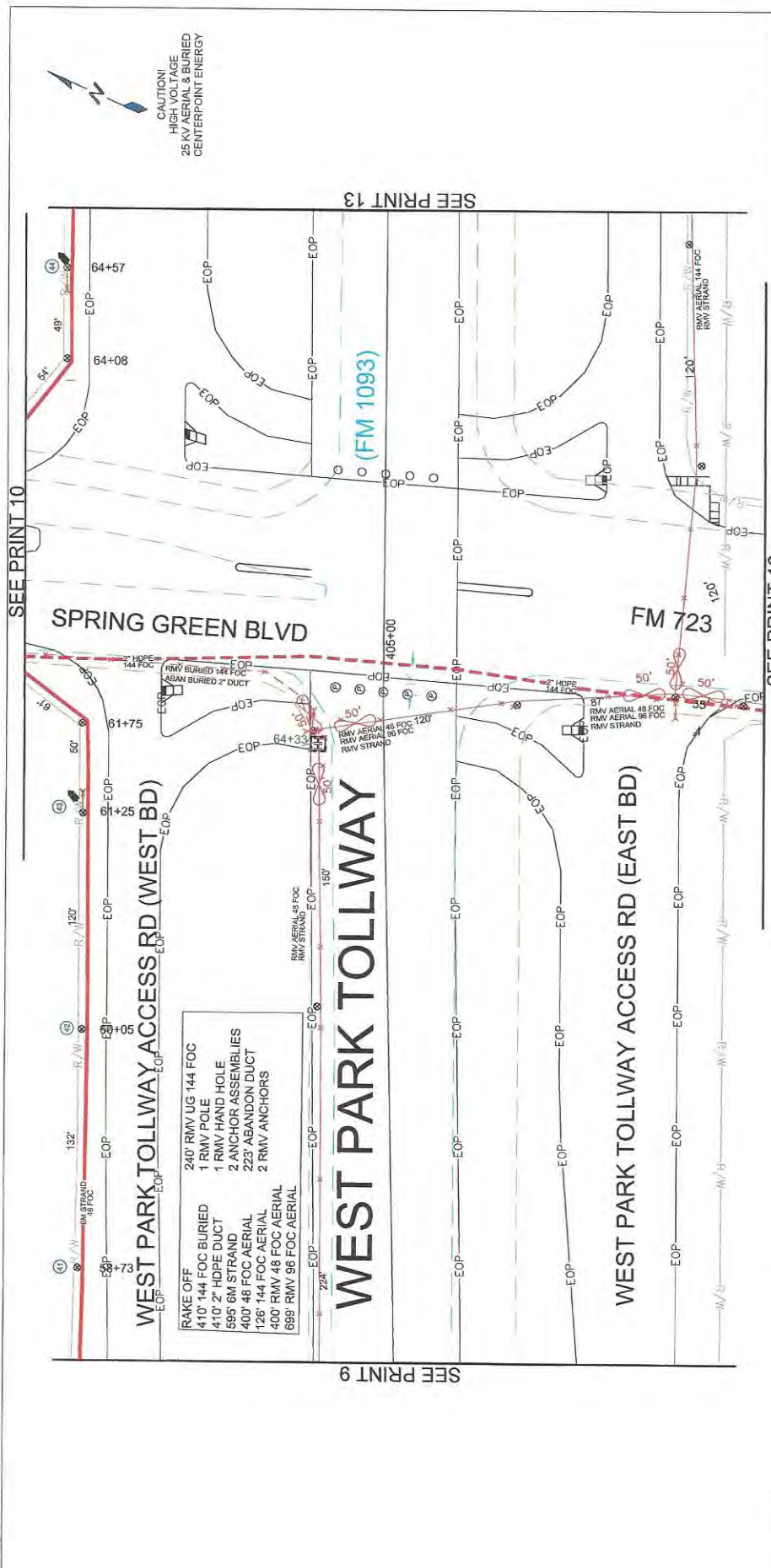
WESTPARK  
 TOLLWAY EXTENSION  
 FIBER RELOCATION



En-Touch Engineer	WESLEY PERINE, Design By: BYERS
DRAWN BY:	BYERS
DATE:	07-06-2015
KEY MAP:	0242
PLAT:	03 OF 28
ENW NAME:	WO15CFB1074







SEE PRINT 10

SEE PRINT 13

SEE PRINT 9

CAUTION!  
HIGH VOLTAGE  
25 KV AIR & BURIED  
CENTERPOINT ENERGY

- RAKE OFF
- 410' 144 FOC BURIED
- 410' 2" HDPE DUCT
- 595' 6M STRAND
- 400' 48 FOC AERIAL
- 126' 144 FOC AERIAL
- 400' RMV 48 FOC AERIAL
- 699' RMV 96 FOC AERIAL
- 240' RMV UG 144 FOC
- 1 RMV POLE
- 1 RMV HAND HOLE
- 2 ANCHOR ASSEMBLIES
- 223' ABANDON DUCT
- 2 RMV ANCHORS

# WEST PARK TOLLWAY

# WEST PARK TOLLWAY ACCESS RD (WEST BD)

# WEST PARK TOLLWAY ACCESS RD (EAST BD)

**CONTRACTORS:**  
THE LOCATIONS OF EXISTING TELEPHONE UTILITIES ARE SHOWN BY THE DASHED LINES. CONTRACTORS SHALL BE RESPONSIBLE FOR VERIFYING THE LOCATION OF ALL EXISTING UTILITIES BEFORE COMMENCING WORK, AND AGREES TO BE FULLY RESPONSIBLE FOR ANY AND ALL DAMAGES WHICH MIGHT BE OCCASIONED BY THE CONTRACTOR'S FAILURE TO EXACTLY LOCATE AND PRESERVE ANY AND ALL UTILITIES.  
48 HOURS PRIOR TO EXCAVATING  
FOR NON-TELEPHONE UTILITIES LOCATES  
CALL 1-800-545-6005  
CONTACT STORM WATER SOLUTIONS, 24 HOURS PRIOR  
TO WORKING IN AREA FOR VEHICLE ACCESS 713-935-1044

**CAUTION:**  
**UNDERGROUND GAS FACILITIES**  
Locations of CENTERPOINT ENERGY main lines (to include Unit Gas Transmission and/or Industrial Gas Supply Corporation where applicable) are shown in an approximate location only. Service lines are usually not shown. The contractor shall contact the Utility Coordinating Department at 281-223-1957 or 1-800-669-9344 a minimum of 48 hours prior to excavation to have main service lines field located.

**CENTERPOINT ENERGY NOTE:**  
⊗ POLE REFERENCE NUMBER  
PLACE CABLE AND STRAND AT 18" HEIGHT  
CENTERPOINT ENERGY POLE ATTACHMENT PERMIT REQUIRED

SCALE: 1"=50'

WESTPARK TOLLWAY EXTENSION FIBER RELOCATION

**BYERS ENGINEERING**  
10000 Westpark Tollway  
Houston, TX 77066  
Tel: 281-223-1957  
Fax: 281-223-1958

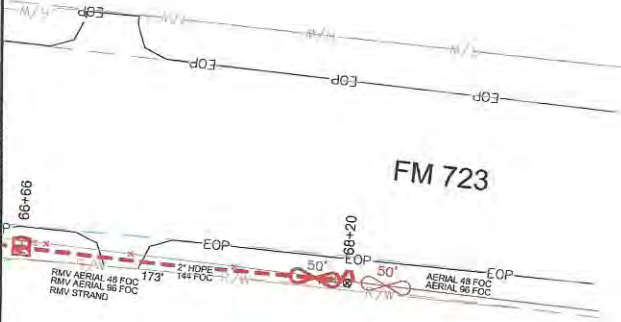
En-Touch Engineer  
WESLEY FERNALD, Owner/Dr. BYERS

DATE: 07-06-2015  
DRAWN BY: BYERS  
MET. MPH: 50AC  
PLAT: 11 OF 28  
DWG. NAME: WO15CFB1074



WESTPARK TOLLWAY EXTENSION FIBER RELOCATION

SEE PRINT 11



FM 723

50' PULL BURIED SLACK

- TRAKE OFF
- 366' 144 FOC
- 165' RMV 96 FOC
- 165' RMV 48 FOC
- 165' RMV STRAND
- 1 ANCHOR ASSEMBLY
- 163' 2" HDPE DUCT
- 1 HAND HOLE

**CONTRACTORS:**

THE LOCATIONS OF EXISTING TELEPHONE UTILITIES ARE SHOWN BY AN APPROXIMATE DASHED LINE ONLY AND HAVE NOT BEEN INDEPENDENTLY VERIFIED. CONTRACTOR SHALL DETERMINE THE EXACT LOCATION OF ALL EXISTING UTILITIES BEFORE COMMENCING WORK, AND AGREES TO BE FULLY RESPONSIBLE FOR ANY AND ALL DAMAGES WHICH MIGHT BE OCCASIONED BY THE CONTRACTOR'S FAILURE TO EXACTLY LOCATE AND PRESERVE ANY AND ALL UTILITIES.

48 HOURS PRIOR TO EXCAVATING FOR NON-TELEPHONE UTILITIES LOCATES CALL 1-800-545-6005

CONTACT STORM WATER SOLUTIONS, 24 HOURS PRIOR TO WORKING IN AREA FOR VEHICLE ACCESS 713-935-1044

**CAUTION:**  
**UNDERGROUND GAS FACILITIES**  
 Locations of CENTERPOINT ENERGY main lines (to include Unit Gas Transmission and/or Industrial Gas Supply Corporation where applicable) are shown in an approximate location only. Service lines are usually not shown. The contractor shall contact the Utility Coordinating Committee at (409) 223-4667 or 1-800-669-8344 for more information. All locations for construction to have main service lines field located.

**WESTPARK TOLLWAY EXTENSION FIBER RELOCATION**

En-Touch Engineer  
 WESLEY PENNA, Design By: BYERS  
 DRAWN BY: BYERS  
 DATE: 07-02-2015  
 NET: MPH  
 PLAT: 12 OF 28  
 DWG NAME: WO15CFB1074

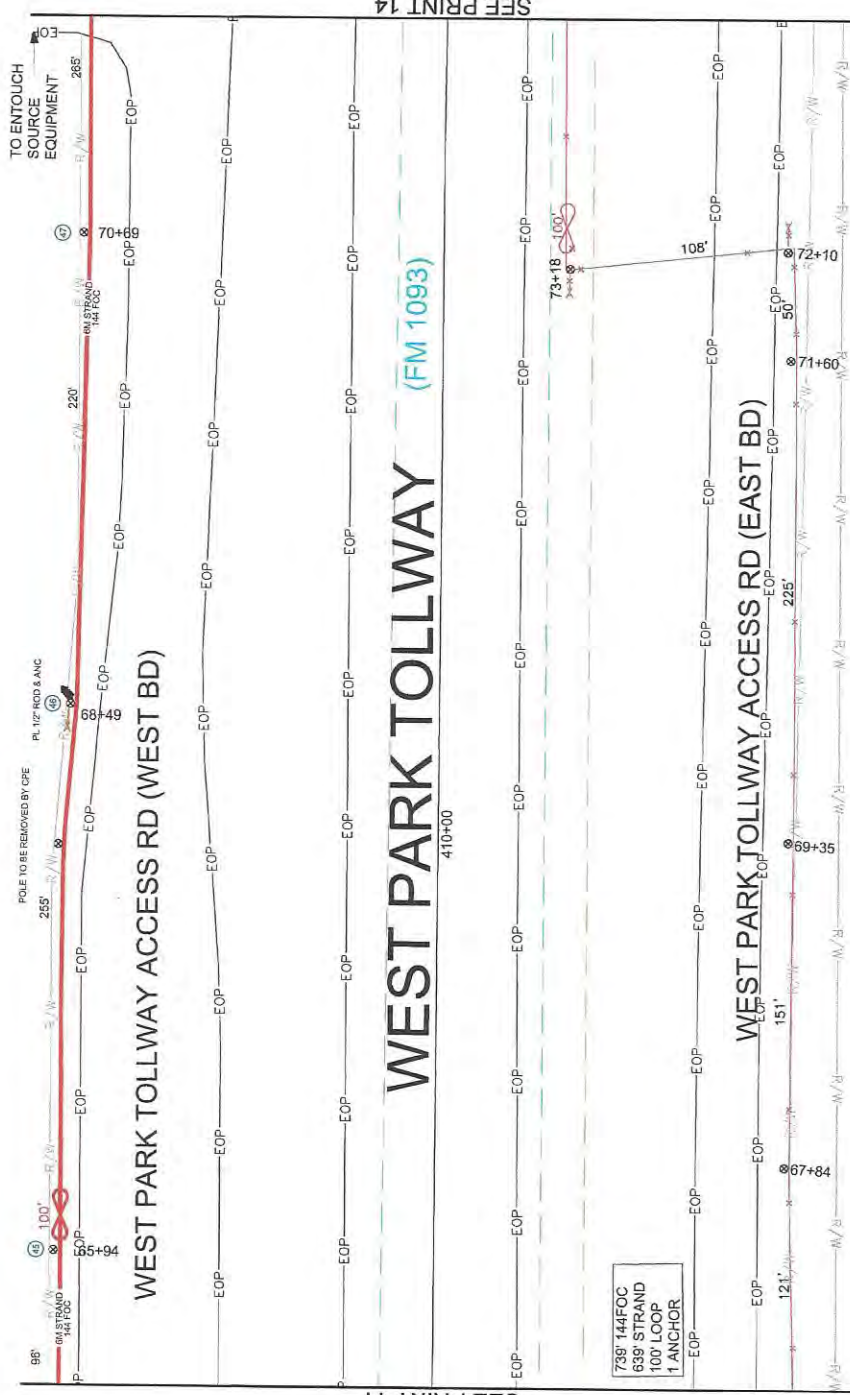


**CENTERPOINT ENERGY NOTE:**

- (X) POLE REFERENCE NUMBER
- PLACE CABLE AND STRAND AT 18" HEIGHT
- CENTERPOINT ENERGY POLE ATTACHMENT PERMIT REQUIRED

CAUTION  
 HIGH VOLTAGE  
 25 KV AERIAL & BURIED  
 CENTERPOINT ENERGY



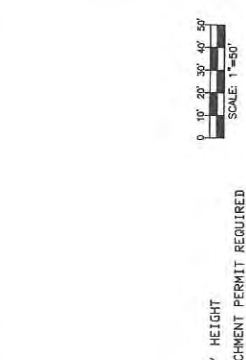


SEE PRINT 11

SEE PRINT 14

**CONTRACTORS:**  
 THE LOCATIONS OF EXISTING TELEPHONE UTILITIES ARE SHOWN IN RED. CONTRACTORS SHALL VERIFY THE LOCATION OF ALL UTILITIES PRIOR TO EXCAVATING. CONTRACTORS SHALL DETERMINE THE EXACT LOCATION OF ALL EXISTING UTILITIES BEFORE COMMENCING WORK, AND AGREES TO BE FULLY RESPONSIBLE FOR ANY AND ALL DAMAGES WHICH MIGHT BE OCCASIONED BY THE CONTRACTOR'S FAILURE TO EXACTLY LOCATE AND PRESERVE ANY AND ALL UTILITIES.  
 48 HOURS PRIOR TO EXCAVATING FOR NON-TELEPHONE UTILITIES LOCATES CALL 1-800-545-6005  
 CONTACT STORM WATER SOLUTIONS 24 HOURS PRIOR TO WORKING IN AREA FOR VEHICLE ACCESS 713-935-1044

**CENTERPOINT ENERGY NOTE:**  
 (X) POLE REFERENCE NUMBER  
 PLACE CABLE AND STRAND AT 18" HEIGHT  
 CENTERPOINT ENERGY POLE ATTACHMENT PERMIT REQUIRED



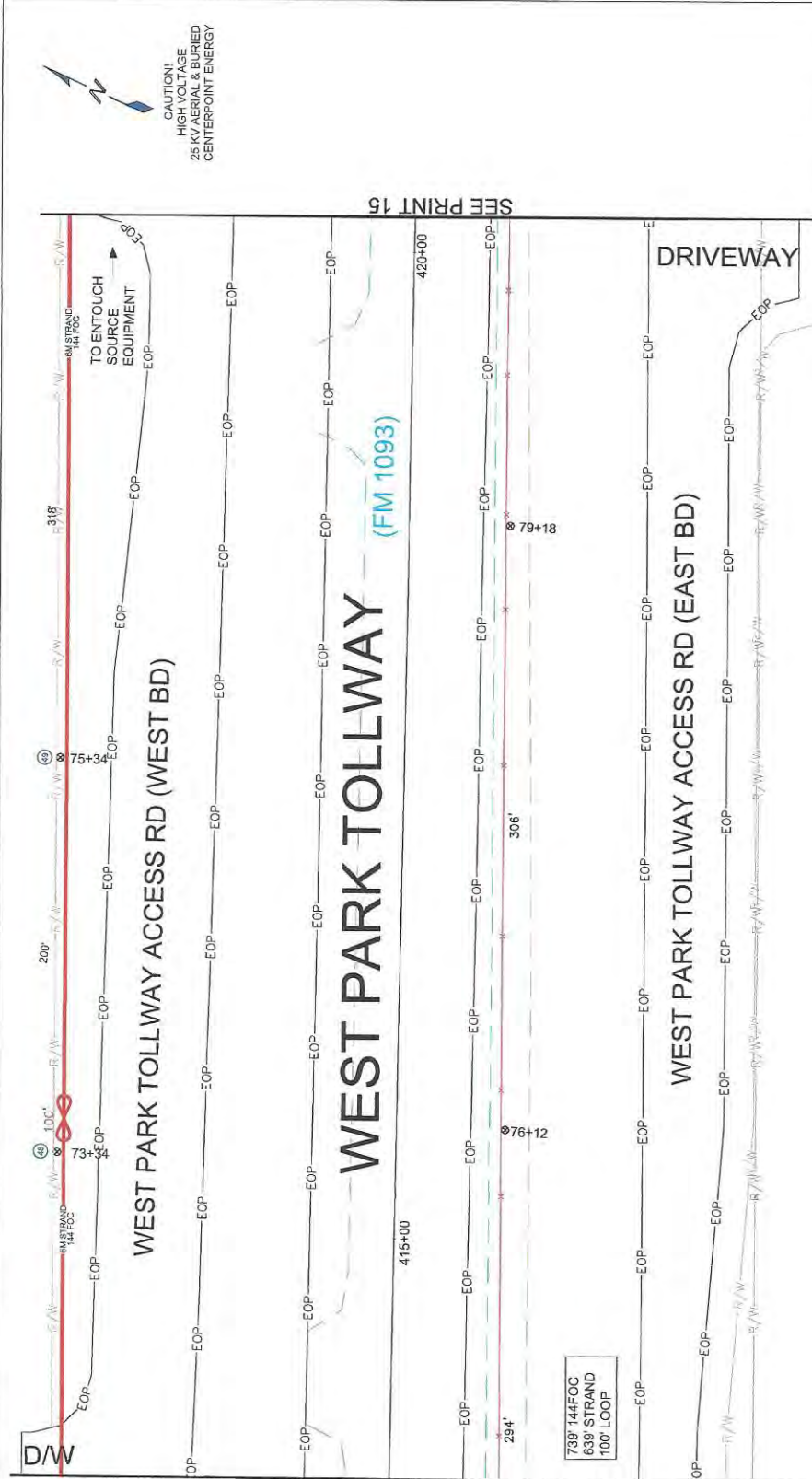
**CAUTION: UNDERGROUND GAS FACILITIES**  
 Locations of CENTERPOINT ENERGY main lines (to include Unit Gas Transmission and/or Industrial Gas Supply Corporation where applicable) are shown in an approximate location only. Service lines are usually not shown. The contractor shall contact the Utility Coordinating Center at (713) 325-5597 or 1-800-555-6344 a minimum of 48 hours prior to construction to have main service lines field located.

**WESTPARK TOLLWAY EXTENSION FIBER RELOCATION**

**En-Touch Engineering**  
 WESTLEY PENNIX, Design By: BYERS  
 DRAWN BY: BYERS  
 DATE: 07-09-2015  
 SHEET: 13 OF 28  
 PROJECT: WO15CFB1074

**BYERS**  
 CONSULTING ENGINEERS  
 7733-BIRCHWOOD DRIVE  
 HOUSTON, TEXAS 77055

**CAUTION: HIGH VOLTAGE 25 KV AERIAL & BURIED CENTERPOINT ENERGY**



CAUTION!  
HIGH VOLTAGE  
25 KV OVERHEAD LINES  
CENTERPOINT ENERGY

SEE PRINT 13

SEE PRINT 15

**CONTRACTORS:**

THE LOCATIONS OF EXISTING TELEPHONE UTILITIES ARE SHOWN AS AN APPROXIMATE MAY ONLY AND HAVE NOT BEEN INDEPENDENTLY VERIFIED BY CENTERPOINT ENERGY. THE CONTRACTOR SHALL DETERMINE THE EXACT LOCATION OF UTILITIES BEFORE COMMENCING WORK, AND AGREES TO BE FULLY RESPONSIBLE FOR ANY AND ALL DAMAGES WHICH MIGHT BE OCCASIONED BY THE CONTRACTOR'S FAILURE TO EXACTLY LOCATE AND PRESERVE ANY AND ALL UTILITIES.

48 HOURS PRIOR TO EXCAVATING FOR NON-TELEPHONE UTILITIES LOCATES CALL 1-800-545-6005

CONTACT STRIK WATER SOLUTIONS, 84 HOURS PRIOR TO WORKING IN AREA FOR VEHICLE ACCESS 713-995-1044

**CAUTION:**  
**UNDERGROUND GAS FACILITIES**  
Locations of **CENTERPOINT ENERGY** main lines (to include Unit Gas Transmission and/or Industrial Gas Supply Corporation where applicable) are shown in an approximate location only. Service lines are usually not shown. The contractor shall contact the Utility Coordinating Committee at (713) 223-4507 or 1-800-569-8344 a minimum of 48 hours prior to construction to have main service lines field located.



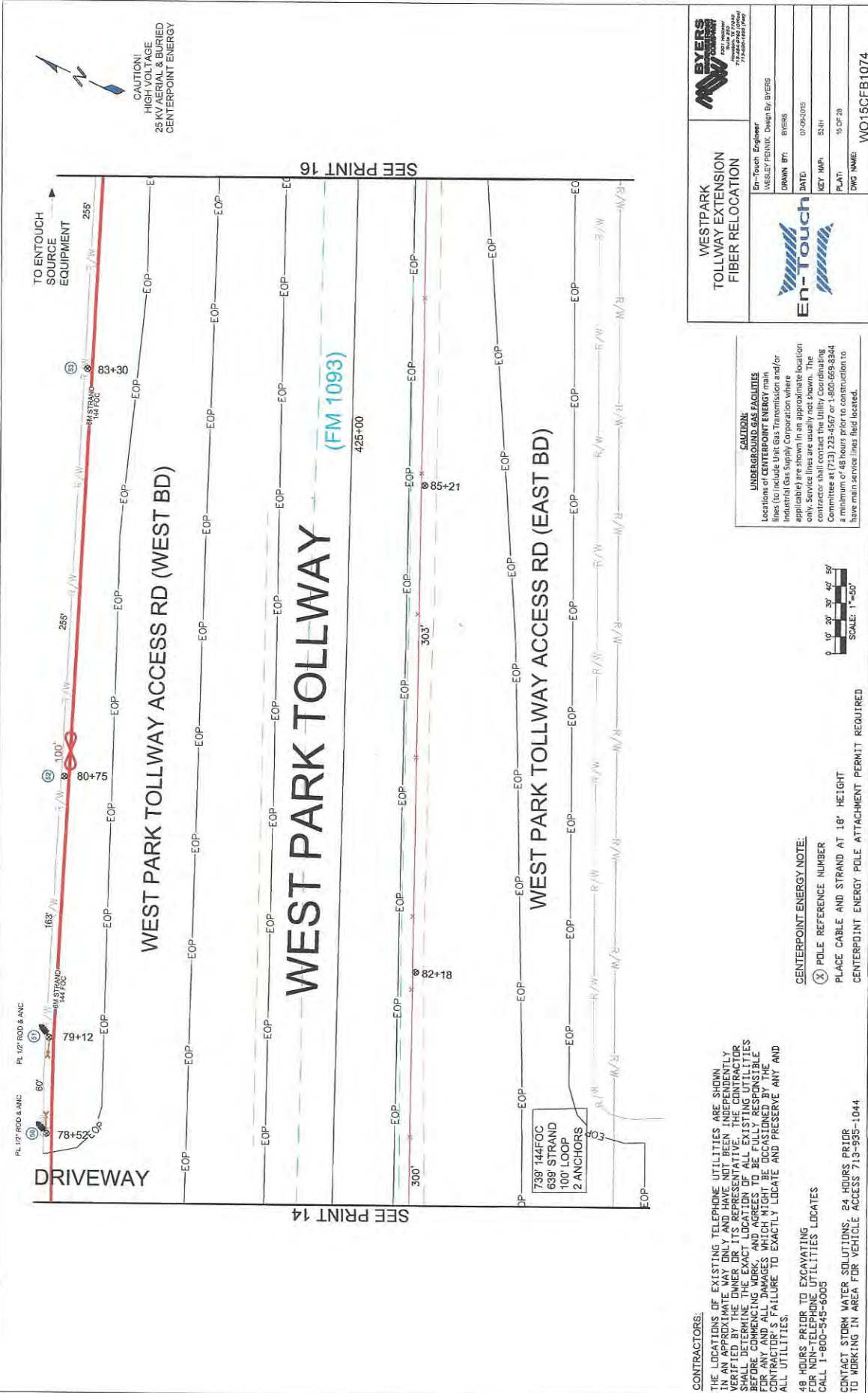
- CENTERPOINT ENERGY NOTE:**
- (X) POLE REFERENCE NUMBER
  - PLACE CABLE AND STRAND AT 18" HEIGHT
  - CENTERPOINT ENERGY POLE ATTACHMENT PERMIT REQUIRED

**WESTPARK TOLLWAY EXTENSION FIBER RELOCATION**



En-Touch Engineer  
MURPHY PENNA. Design By: BYERS  
DRAWN BY: BYERS  
DATE: 07-26-2015  
KEY MAP: 25411  
PLAT: 14 OF 28  
DWG NAME: WO15CFB1074





CAUTION:  
HIGH-VOLTAGE  
25 KV AIR LINES & BURIED  
CENTERPOINT ENERGY

TO ENTOUCH  
SOURCE  
EQUIPMENT

SEE PRINT 16

SEE PRINT 14

WEST PARK TOLLWAY ACCESS RD (WEST BD)

WEST PARK TOLLWAY  
(FM 1093)

WEST PARK TOLLWAY ACCESS RD (EAST BD)

**CONTRACTORS:**

THE LOCATIONS OF EXISTING TELEPHONE UTILITIES ARE SHOWN  
IN AN APPROXIMATE MANNER ONLY AND HAVE NOT BEEN INDEPENDENTLY  
VERIFIED. THE CONTRACTOR SHALL DETERMINE THE EXACT LOCATION OF ALL UTILITIES  
BEFORE COMMENCING WORK, AND AGREES TO BE FULLY RESPONSIBLE  
FOR ANY AND ALL DAMAGES WHICH MIGHT BE OCCASIONED BY THE  
CONTRACTOR'S FAILURE TO EXACTLY LOCATE AND PRESERVE ANY AND  
ALL UTILITIES.

48 HOURS PRIOR TO EXCAVATING  
FOR NON-TELEPHONE UTILITIES LOCATES  
CALL 1-800-545-6005

CONTACT STORM WATER SOLUTIONS, 24 HOURS PRIOR  
TO WORKING IN AREA FOR VEHICLE ACCESS 713-995-1044

**CAUTION:**  
**UNDERGROUND GAS FACILITIES**  
Locations of CENTERPOINT ENERGY main  
lines (to include Unit Gas Transmission and/or  
Industrial Gas Supply Corporation where  
applicable) are shown in an approximate location  
only. Service lines are usually not shown. The  
contractor shall contact the Utility Coordinating  
Committee at (713) 223-567 or 1-800-669-8344  
a minimum of 48 hours prior to construction to  
determine main service line field located.



**CENTERPOINT ENERGY NOTE:**

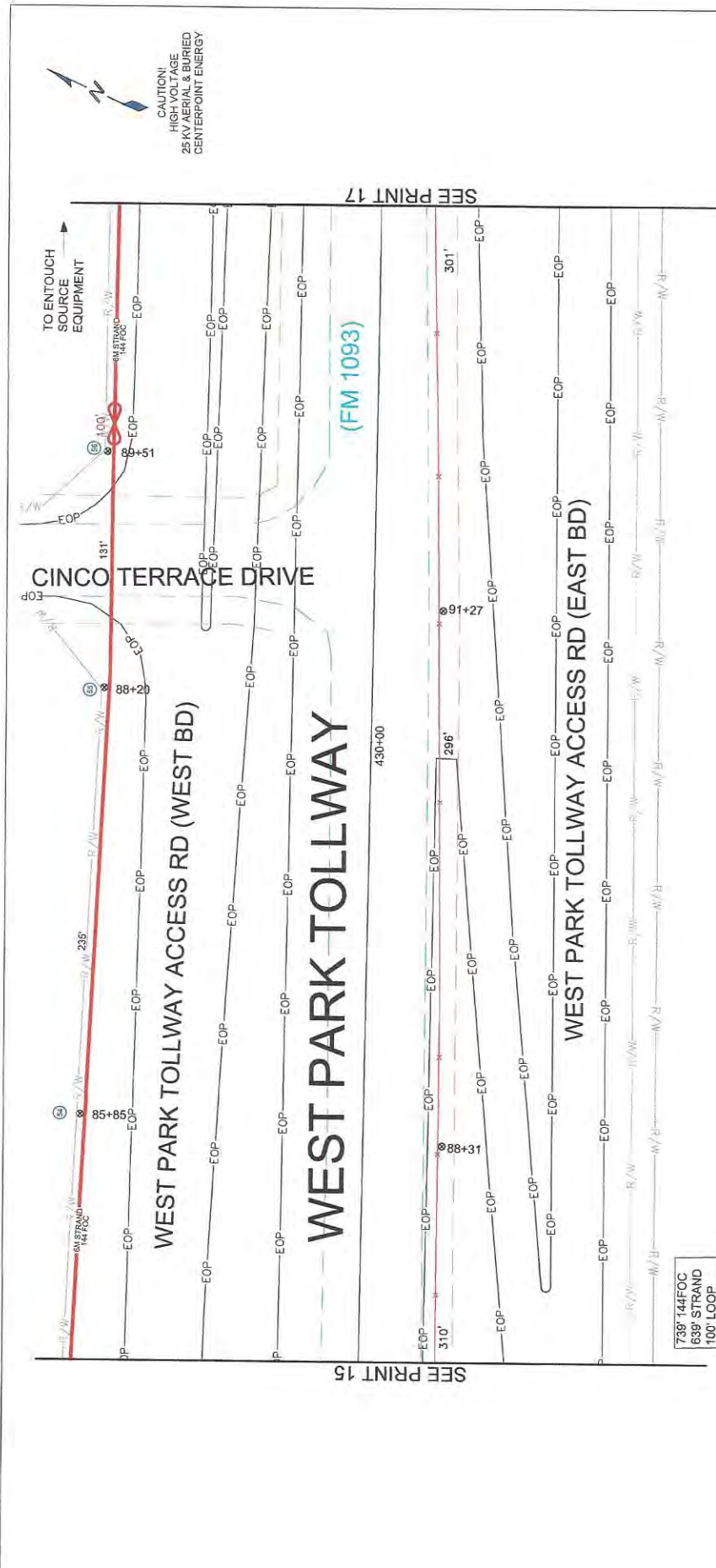
- (X) POLE REFERENCE NUMBER
- PLACE CABLE AND STRAND AT 18" HEIGHT
- CENTERPOINT ENERGY POLE ATTACHMENT PERMIT REQUIRED

WESTPARK  
TOLLWAY EXTENSION  
FIBER RELOCATION



En-Touch Engineer  
MABLEY PERINCK, Design By BYERS  
DRAWN BY: BYERS  
DATE: 07-09-2015  
KEY: IMP, DRH  
PLAT: 15 OF 28  
SHEET NAME: WO15CFB1074





CAUTION!  
HIGH VOLTAGE  
95 KV OVERHEAD  
LINES & BURIED  
CENTERPOINT ENERGY

SEE PRINT 15

SEE PRINT 17

**CONTRACTORS:**  
THE LOCATIONS OF EXISTING TELEPHONE UTILITIES ARE SHOWN BY THE DASHED LINES. CONTRACTORS SHALL VERIFY THE LOCATION OF ALL UTILITIES PRIOR TO COMMENCING WORK, AND AGREES TO BE FULLY RESPONSIBLE FOR ANY AND ALL DAMAGES WHICH MIGHT BE OCCASIONED BY THE CONTRACTOR'S FAILURE TO EXACTLY LOCATE AND PRESERVE ANY AND ALL UTILITIES.  
48 HOURS PRIOR TO EXCAVATING FOR NON-TELEPHONE UTILITIES LOCATES CALL 1-800-545-6005  
CONTACT STERN WATER SOLUTIONS, 84 HOURS PRIOR TO WORKING IN AREA FOR VEHICLE ACCESS 713-955-1044

**CENTERPOINT ENERGY NOTE:**  
⊗ POLE REFERENCE NUMBER  
PLACE CABLE AND STRAND AT 18" HEIGHT  
CENTERPOINT ENERGY POLE ATTACHMENT PERMIT REQUIRED

**CAUTION:**  
**UNDERGROUND GAS FACILITIES**  
Locations of CENTERPOINT ENERGY main lines (to include Unit Gas Transmission and/or Industrial Gas Supply Corporation where applicable) are shown in an approximate location only. Service lines are usually not shown. The contractor shall contact the Utility Coordinating Committee at (713) 233-5557 or 1-800-669-8344 a minimum of 48 hours prior to construction to have main service lines field located.

**WESTPARK TOLLWAY EXTENSION FIBER RELOCATION**

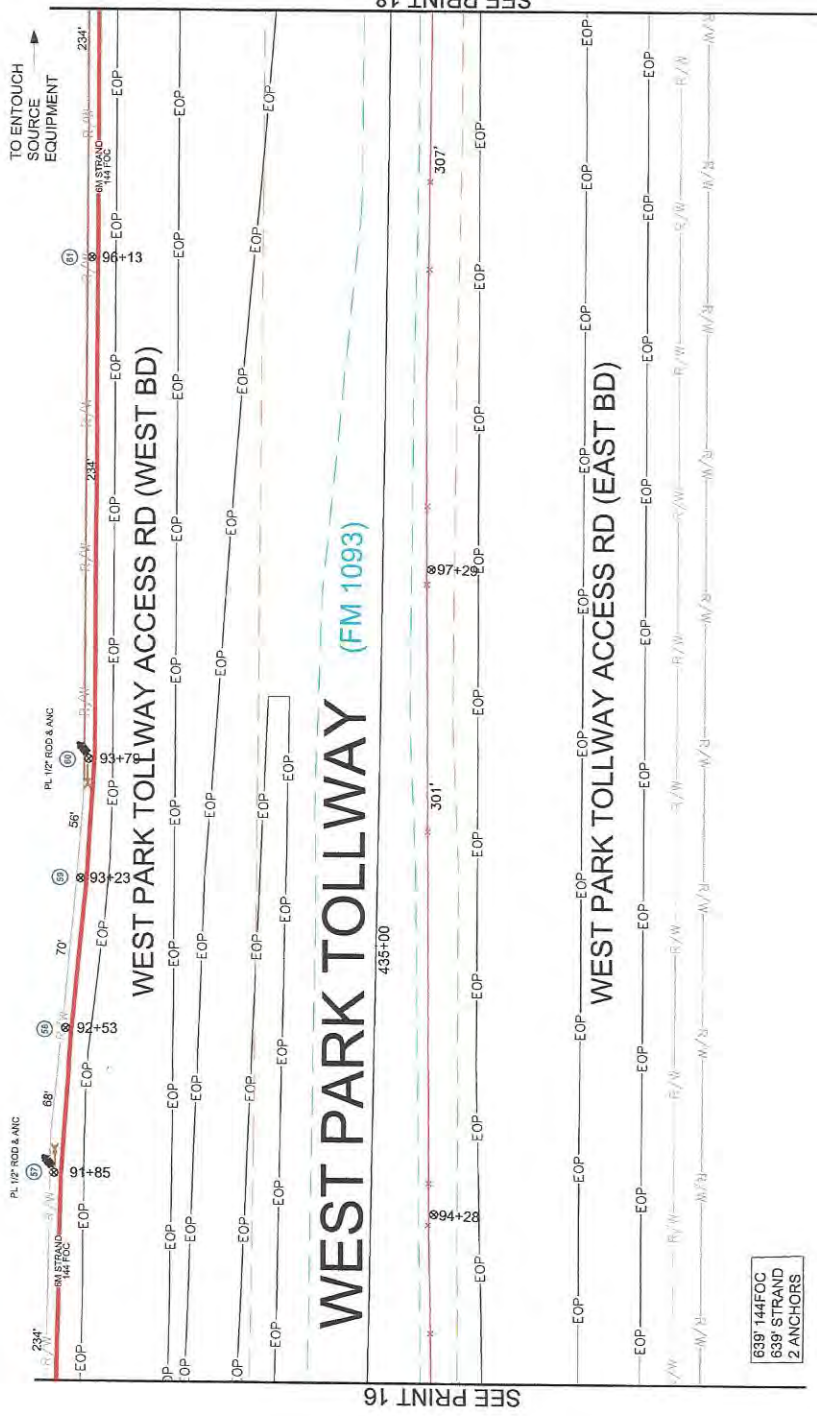
**En-Touch**

En-Touch Engineer  
WESTPARK TOLLWAY  
DRAWN BY: BYERS  
DATE: 07-26-2015  
KEY MAP: 52-4  
PLAT: 18 02 28  
DWS NAME: WO15CFB1074

**BYERS**  
TOLLWAY  
ENGINEERING



738' 144FOC  
638' STRAND  
100' LOOP



CAUTION!  
HIGH VOLTAGE  
25 KV AERIAL & BURIED  
CENTERPOINT ENERGY

SEE PRINT 16

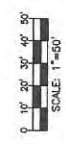
SEE PRINT 18


639' 144FOC  
639' STRAND  
2 ANCHORS

**CONTRACTORS:**  
THE LOCATIONS OF EXISTING TELEPHONE UTILITIES ARE SHOWN APPROXIMATELY ONLY AND HAVE NOT BEEN INDEPENDENTLY VERIFIED BY THE CONTRACTOR. THE CONTRACTOR SHALL DETERMINE THE EXACT LOCATION OF ALL EXISTING UTILITIES BEFORE COMMENCING WORK, AND AGREES TO BE FULLY RESPONSIBLE FOR ANY AND ALL DAMAGES WHICH MIGHT BE OCCASIONED BY THE CONTRACTOR'S FAILURE TO EXACTLY LOCATE AND PRESERVE ANY AND ALL UTILITIES.  
48 HOURS PRIOR TO EXCAVATING FOR NON-TELEPHONE UTILITIES LOCATES CALL 1-800-545-6005  
CONTACT STORM WATER SOLUTIONS: 24 HOURS PRIOR TO WORKING IN AREA FOR VEHICLE ACCESS 713-935-1044

**CAUTION!**  
**UNDERGROUND GAS FACILITIES**  
Locations of CENTERPOINT ENERGY main lines (to include Unit Gas Transmission and/or Industrial Gas Supply Corporation where applicable) are shown in an approximate location only. Service lines are usually not shown. The contractor shall contact the Utility Coordinating a minimum of 148 hours prior to construction to have main service lines field located.

**CENTERPOINT ENERGY NOTE:**  
X POLE REFERENCE NUMBER  
PLACE CABLE AND STRAND AT 18" HEIGHT  
CENTERPOINT ENERGY POLE ATTACHMENT PERMIT REQUIRED

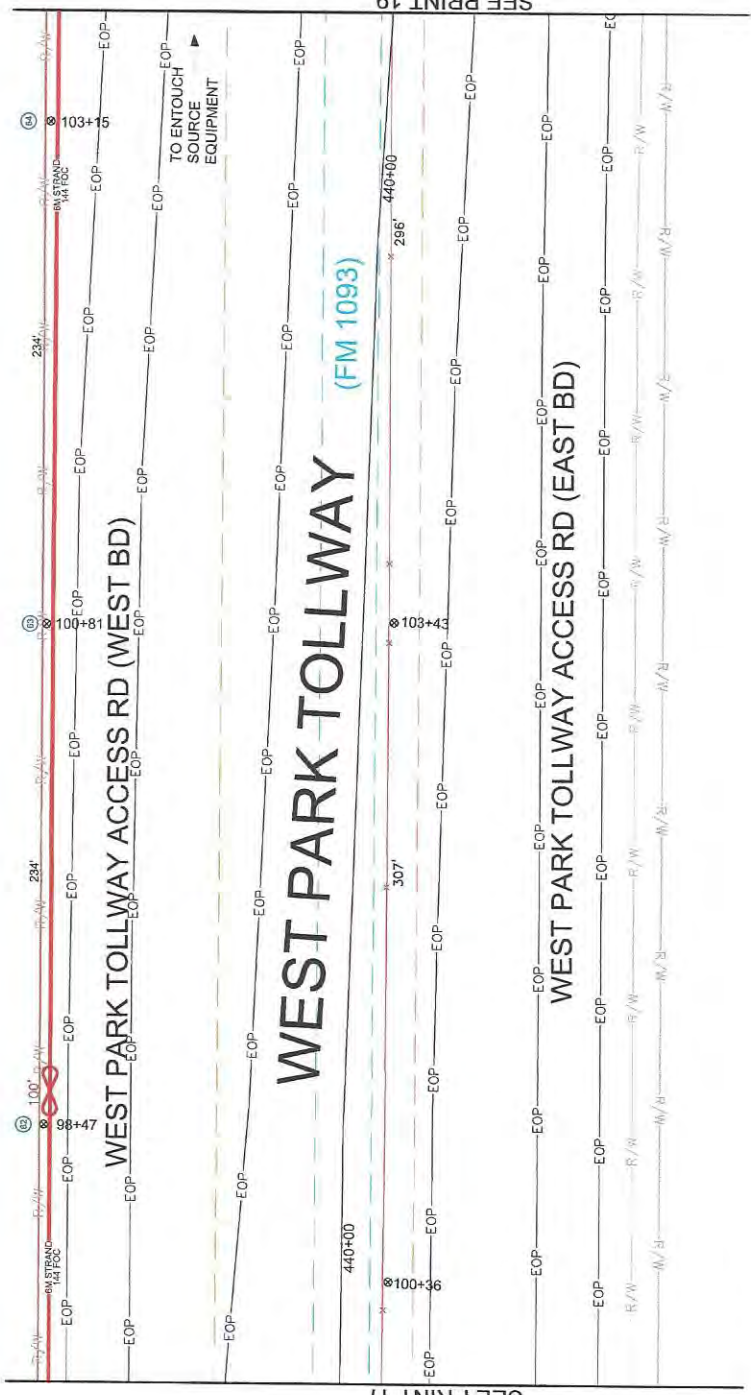




WESTPARK  
TOLLWAY EXTENSION  
FIBER RELOCATION

En-Touch Engineer  
WESLEY FENNIK, Design By: D/ERS

DATE: 07-29-2015  
NET MAP: 5248  
PLAT: 17 OF 28  
DWG NAME: WO15CFB1074



CAUTION!  
HIGHER VOLTAGE  
25 KV OVERHEAD LINES  
CENTERPOINT ENERGY

SEE PRINT 19

SEE PRINT 17

739' 144FOC  
639' STRAND  
100' LOOP

**CONTRACTORS:**  
THE LOCATIONS OF EXISTING TELEPHONE UTILITIES ARE SHOWN IN AN APPROXIMATE MANNER ONLY AND HAVE NOT BEEN INDEPENDENTLY VERIFIED BY THE CONTRACTOR. THE CONTRACTOR SHALL BE RESPONSIBLE FOR VERIFYING THE LOCATION OF ALL UTILITIES PRIOR TO COMMENCING WORK AND AGREES TO BE FULLY RESPONSIBLE FOR ANY AND ALL DAMAGES WHICH MIGHT BE OCCASIONED BY THE CONTRACTOR'S FAILURE TO EXACTLY LOCATE AND PRESERVE ANY AND ALL UTILITIES.  
48 HOURS PRIOR TO EXCAVATING FOR NON-TELEPHONE UTILITIES LOCATES CALL 1-800-545-6005  
CONTACT STORM WATER SOLUTIONS, 84 HOURS PRIOR TO WORKING IN AREA FOR VEHICLE ACCESS 713-995-1044

**WESTPARK TOLLWAY EXTENSION FIBER RELOCATION**

**En-Touch**

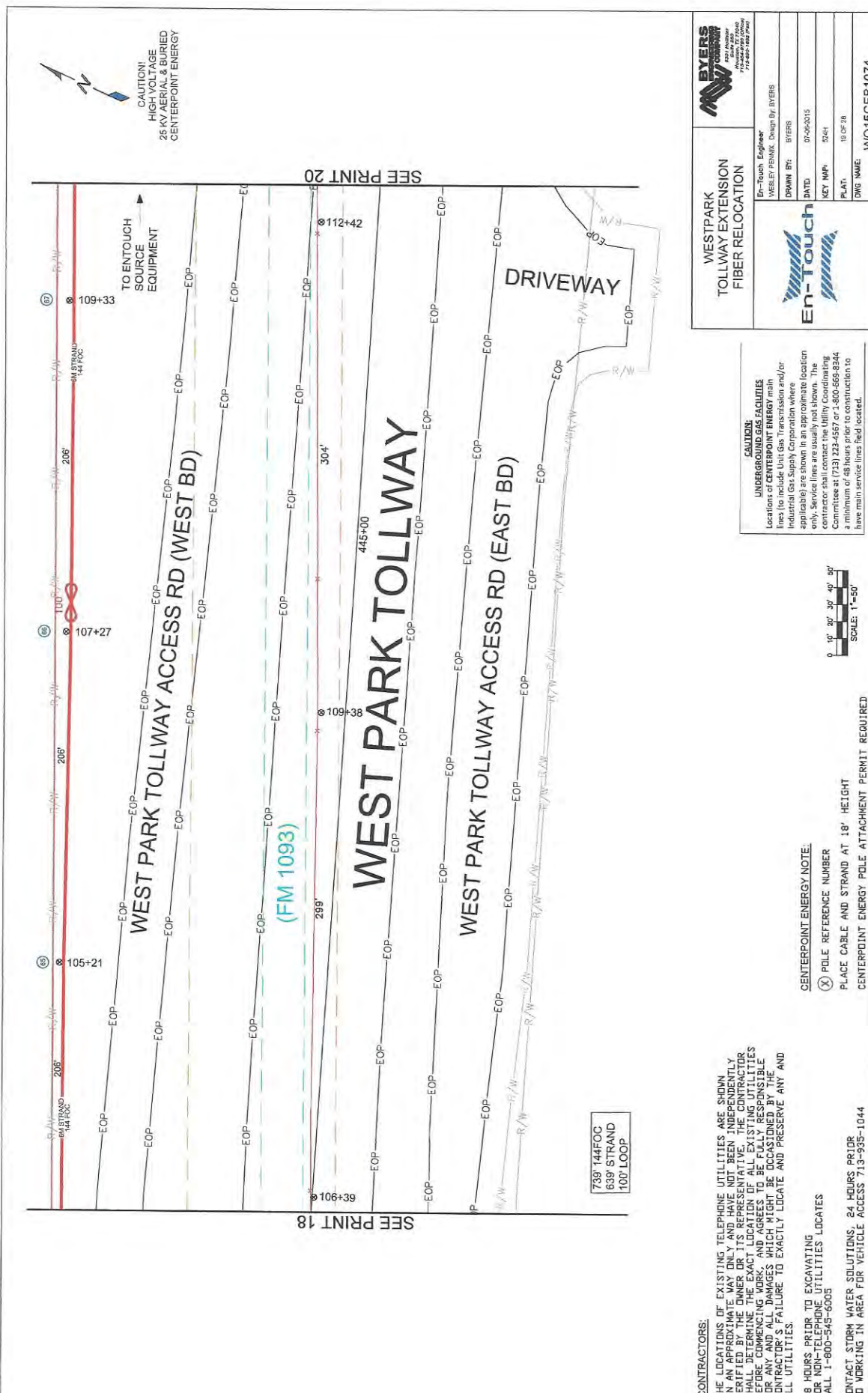
En-Touch Engineer  
WESLEY PENNAZ, Design By: BYERS

DRAWN BY: BYERS  
DATE: 07-02-2015  
KEY: MPR, 0241  
PLAT: 18 OF 28  
SHP NAME: WO15CFB1074

**CAUTION: UNDERGROUND GAS FACILITIES**  
Locations of CENTERPOINT ENERGY main lines (to include Unit Gas Transmission and/or Industrial Gas Supply Corporation where applicable) are shown in an approximate location only. Service lines are usually not shown. The contractor shall contact the Utility Coordinating Committee at (713) 233-3557 or 1-800-569-6344 a minimum of 48 hours prior to construction to have main service lines field located.



**CENTERPOINT ENERGY NOTE:**  
 (X) POLE REFERENCE NUMBER  
 PLACE CABLE AND STRAND AT 18' HEIGHT  
 CENTERPOINT ENERGY POLE ATTACHMENT PERMIT REQUIRED



CAUTION:  
HIGH VOLTAGE  
25 KV AERIAL & BURIED  
CENTERPOINT ENERGY

SEE PRINT 20

SEE PRINT 18

**BYERS**  
ENGINEERING  
10000 E. 15th Ave  
Denver, CO 80231  
303.751.1100

**WESTPARK TOLLWAY EXTENSION FIBER RELOCATION**

En-Touch Engineer  
WEBLEY PENNAK, Design By BYERS

DRAWN BY: BYERS

DATE: 07-06-2015

SHEET NO: 5241

PLAT: 19 OF 28

CWG NAME: WO15CFB1074

**CAUTION:**  
**UNDERGROUND GAS FACILITIES**  
Locations of CENTERPOINT ENERGY main lines (to include Unit Gas Transmission and/or Industrial Gas Supply Corporation where applicable) are shown in an approximate location only. Service lines are usually not shown. The contractor shall (1) call 811 or (2) call 1-800-485-6844 a minimum of 48 hours prior to construction to have main service lines field located.



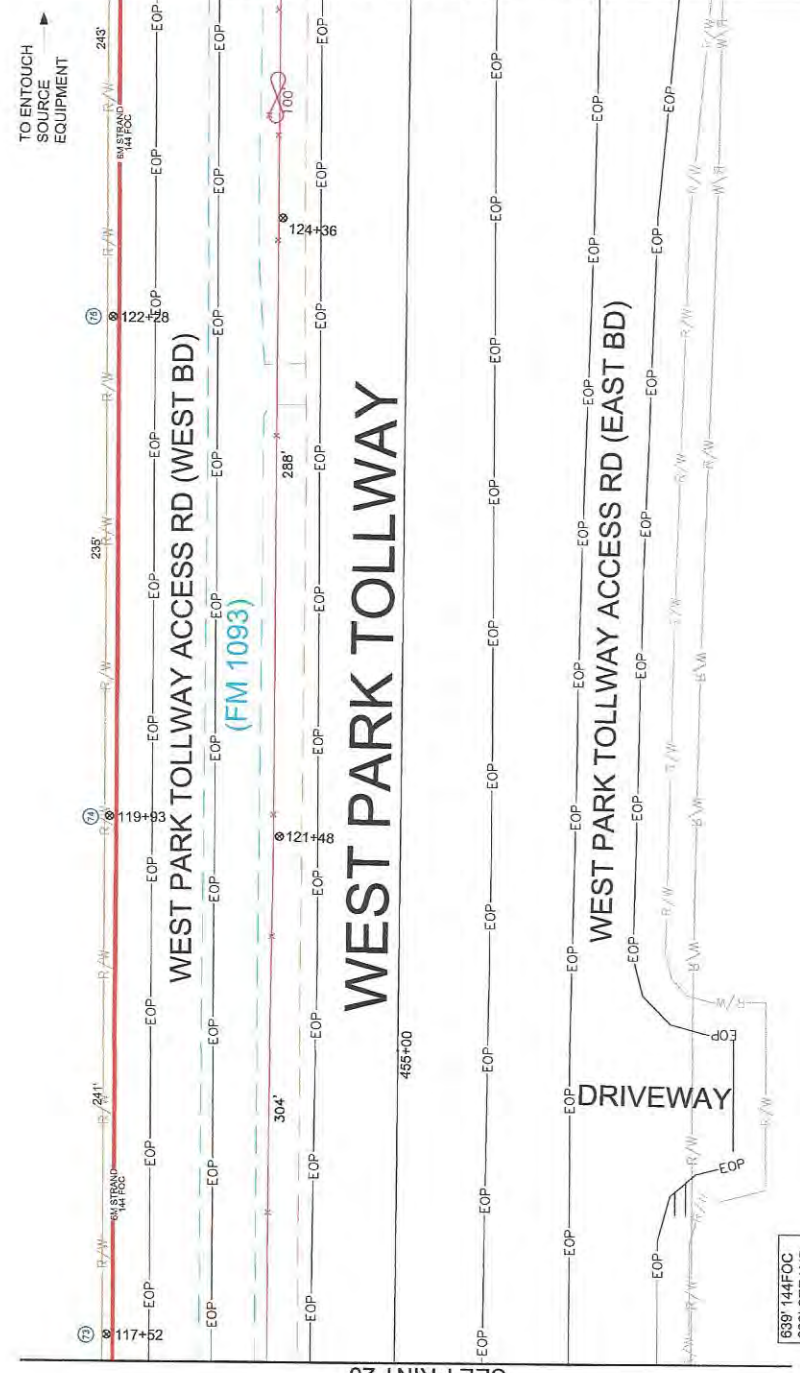
**CONTRACTORS:**  
THE LOCATIONS OF EXISTING TELEPHONE UTILITIES ARE SHOWN APPROXIMATELY ONLY AND HAVE NOT BEEN INDEPENDENTLY VERIFIED. CONTRACTORS SHALL BE RESPONSIBLE FOR VERIFYING ALL UTILITIES BEFORE COMMENCING WORK, AND AGREES TO BE FULLY RESPONSIBLE FOR ANY AND ALL DAMAGES WHICH MIGHT BE OCCASIONED BY THE CONTRACTOR'S FAILURE TO EXACTLY LOCATE AND PRESERVE ANY AND ALL UTILITIES.

48 HOURS PRIOR TO EXCAVATING FOR NON-TELEPHONE UTILITIES LOCATES  
CALL 1-800-545-6005

CONTACT STORM WATER SOLUTIONS, 84 HOURS PRIOR TO WORKING IN AREA FOR VEHICLE ACCESS 713-995-1044

**CENTERPOINT ENERGY NOTE:**  
 (X) POLE REFERENCE NUMBER  
 PLACE CABLE AND STRAND AT 18' HEIGHT  
 CENTERPOINT ENERGY POLE ATTACHMENT PERMIT REQUIRED





SEE PRINT 20

SEE PRINT 22

**CONTRACTORS:**  
 THE LOCATIONS OF EXISTING TELEPHONE UTILITIES ARE SHOWN IN AN APPROXIMATE MANNER ONLY AND HAVE NOT BEEN INDEPENDENTLY VERIFIED BY THE CONTRACTOR. THE CONTRACTOR SHALL BE RESPONSIBLE FOR VERIFYING THE LOCATION OF ALL UTILITIES BEFORE COMMENCING WORK AND AGREES TO BE FULLY RESPONSIBLE FOR ANY AND ALL DAMAGES WHICH MIGHT BE OCCASIONED BY THE CONTRACTOR'S FAILURE TO EXACTLY LOCATE AND PRESERVE ANY AND ALL UTILITIES.  
 48 HOURS PRIOR TO EXCAVATING FOR NON-TELEPHONE UTILITIES LOCATES CALL 1-800-545-6003  
 CONTRACT STORM WATER SOLUTIONS, 84 HOURS PRIOR TO WORKING IN AREA FOR VEHICLE ACCESS 713-955-1044

**CENTERPOINT ENERGY NOTE:**  
 (X) POLE REFERENCE NUMBER  
 PLACE CABLE AND STRAND AT 18" HEIGHT  
 CENTERPOINT ENERGY POLE ATTACHMENT PERMIT REQUIRED

**CAUTION:**  
**UNDERGROUND GAS FACILITIES**  
 Locations of CENTERPOINT ENERGY main lines (to include Unit Gas Transmission and/or Industrial Gas Supply Corporation where applicable) are shown in an approximate location only. Service lines are usually not shown. The contractor shall contact the Utility Coordinating Committee at (713) 223-5557 or 1-800-565-5344 a minimum of 48 hours prior to construction to have main service lines field located.

**WESTPARK TOLLWAY EXTENSION FIBER RELOCATION**

**En-Touch**

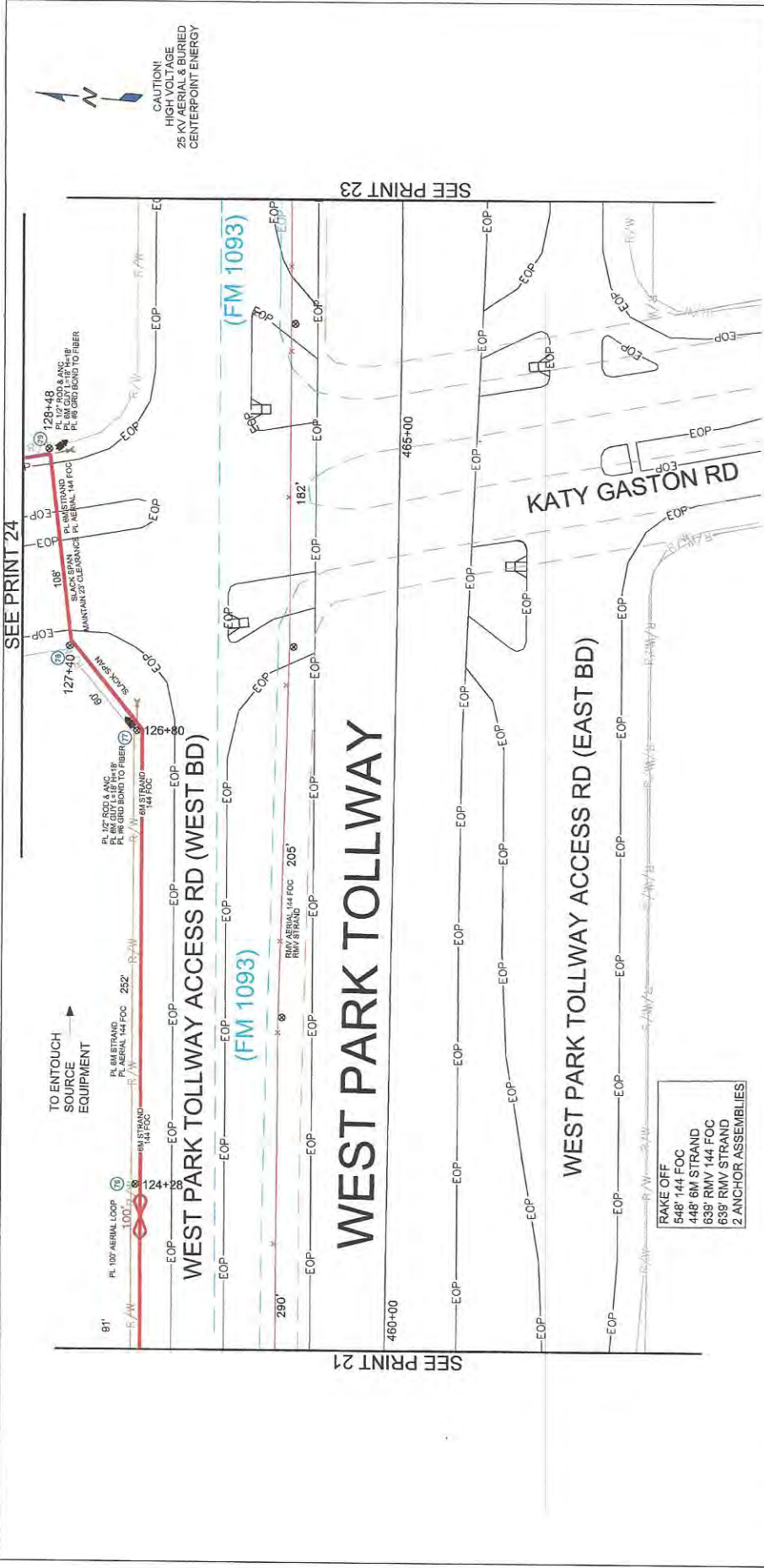
En-Touch Engineer  
 WESLEY PENNIX, Design By BYERS

DRAWN BY: BYERS  
 DATE: 07-09-2015  
 NET MAP: 2026  
 PLAT: 21 OF 26  
 DWG NAME: WO15CFB1074

**BYERS COMPANY**  
 713-463-7100  
 713-463-7101 (Fax)

**CAUTION!**  
 HIGH VOLTAGE  
 25 KV AERIAL & BURIED  
 CENTERPOINT ENERGY





**BYERS**  
**WESTPARK**  
 TOLLWAY  
 FIBER OPTIC  
 RELOCATION

En-Touch Engineer  
 WERLEY PENNA. Design By BYERS

DRAWN BY: BYERS  
 DATE: 07-06-2015  
 KEY: HMP  
 PLAT: 23 OF 28  
 DWG NAME: WO15CFB1074

**CAUTION:**  
**UNDERGROUND GAS FACILITIES**  
 Locations of CENTERPOINT ENERGY main lines (to include Unit Gas Transmission and/or Industrial Gas Supply Corporation where applicable) are shown in an approximate location only. Service lines are usually not shown. The contractor shall contact the Utility Coordinating Committee at (713) 223-4557 or 1-800-695-8344 for more information. Construction to have main service lines field located.



**CONTRACTORS:**  
 THE LOCATIONS OF EXISTING TELEPHONE UTILITIES ARE SHOWN IN AN APPROXIMATE MANNER ONLY, AND HAVE NOT BEEN INDEPENDENTLY VERIFIED. THE CONTRACTOR SHALL BE RESPONSIBLE FOR VERIFYING THE EXACT LOCATION OF ALL UTILITIES BEFORE COMMENCING WORK AND AGREES TO BE FULLY RESPONSIBLE FOR ANY AND ALL DAMAGES WHICH MIGHT BE OCCASIONED BY THE CONTRACTOR'S FAILURE TO EXACTLY LOCATE AND PRESERVE ANY AND ALL UTILITIES.

48 HOURS PRIOR TO EXCAVATING FOR NON-TELEPHONE UTILITIES LOCATES CALL 1-800-545-6005

CONTACT STORM WATER SOLUTIONS, 24 HOURS PRIOR TO WORKING IN AREA FOR VEHICLE ACCESS 713-935-1044

**CENTERPOINT ENERGY NOTE:**  
 (X) POLE REFERENCE NUMBER  
 PLACE CABLE AND STRAND AT 18' HEIGHT  
 CENTERPOINT ENERGY POLE ATTACHMENT PERMIT REQUIRED

**RAKE OFF**  
 548' 144 FOC  
 448' 6M STRAND  
 639' RMV 144 FOC  
 639' RMV STRAND  
 2 ANCHOR ASSEMBLIES

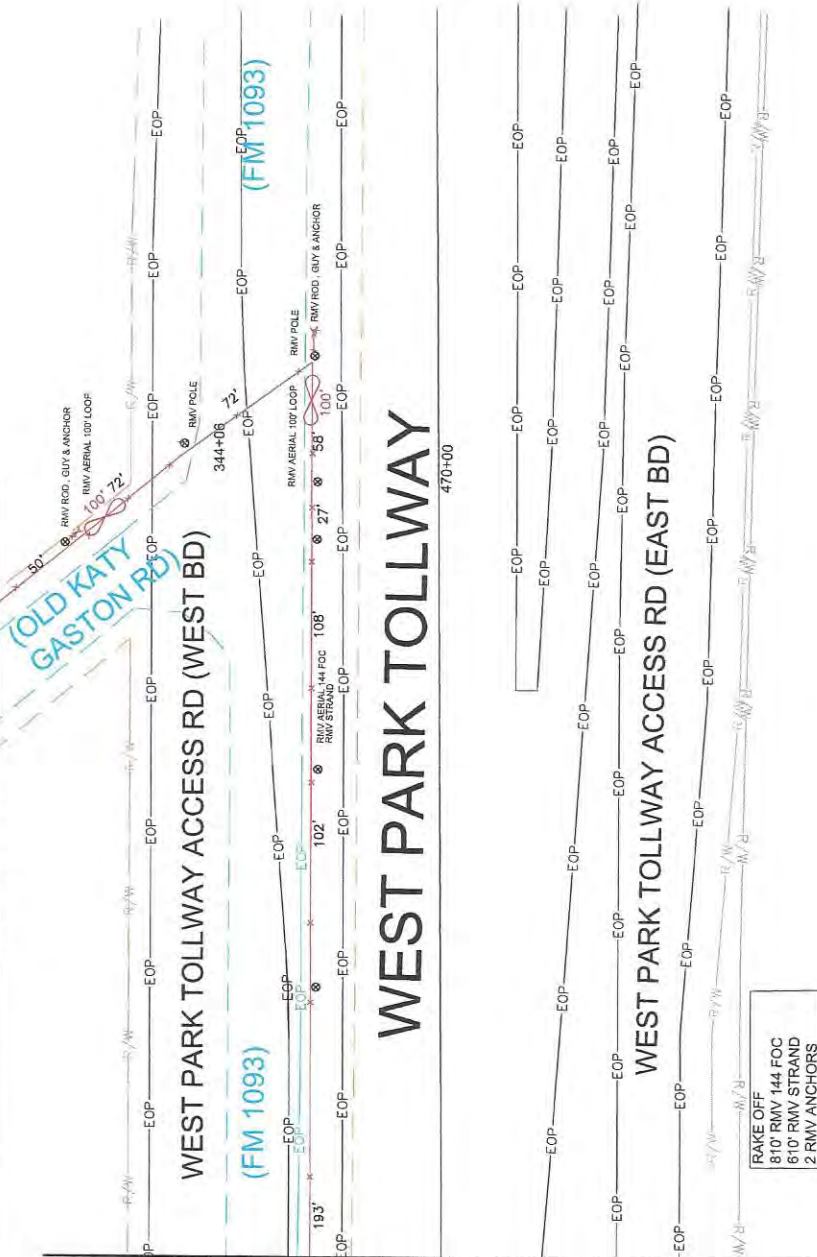
SEE PRINT 24

SEE PRINT 23

SEE PRINT 21

**CAUTION!**  
 HIGH VOLTAGE  
 25 KV AERIAL & BURIED  
 CENTERPOINT ENERGY

SEE PRINT 24



CAUTION:  
HIGH VOLTAGE  
CABLES & BURIED  
CENTERPOINT ENERGY

SEE PRINT 22

**WESTPARK TOLLWAY EXTENSION FIBER RELOCATION**

**En-Touch**

En-Touch Engineer  
WESLEY FENKEL, Design By BYERS

DATE: 07-06-2015

KEY: MHP  
DATE: 23 OF 28

TWP NAME: WO15CFB1074

**CAUTION:**  
**UNDERGROUND GAS FACILITIES**  
Locations of CENTERPOINT ENERGY main lines (to include Unit Gas, Transmission and/or Industrial Gas Supply Corporation where applicable) are shown in an approximate location only. Service lines are usually not shown. The contractor shall contact the Utility Coordinating Committee at (713) 223-5557 or 1-800-669-8344 a minimum of 48 hours prior to construction to have main service lines field located.



**CONTRACTORS:**  
THE LOCATIONS OF EXISTING TELEPHONE UTILITIES ARE SHOWN IN AN APPROXIMATE WAY ONLY AND HAVE NOT BEEN INDEPENDENTLY VERIFIED BY THE OWNER OR ITS REPRESENTATIVE. THE CONTRACTOR SHALL DETERMINE THE EXACT LOCATION OF ALL EXISTING UTILITIES BEFORE ANY EXCAVATION, TRENCHING, OR OTHER WORK IS DONE. THE CONTRACTOR'S FAILURE TO EXACTLY LOCATE AND PRESERVE ANY AND ALL UTILITIES.

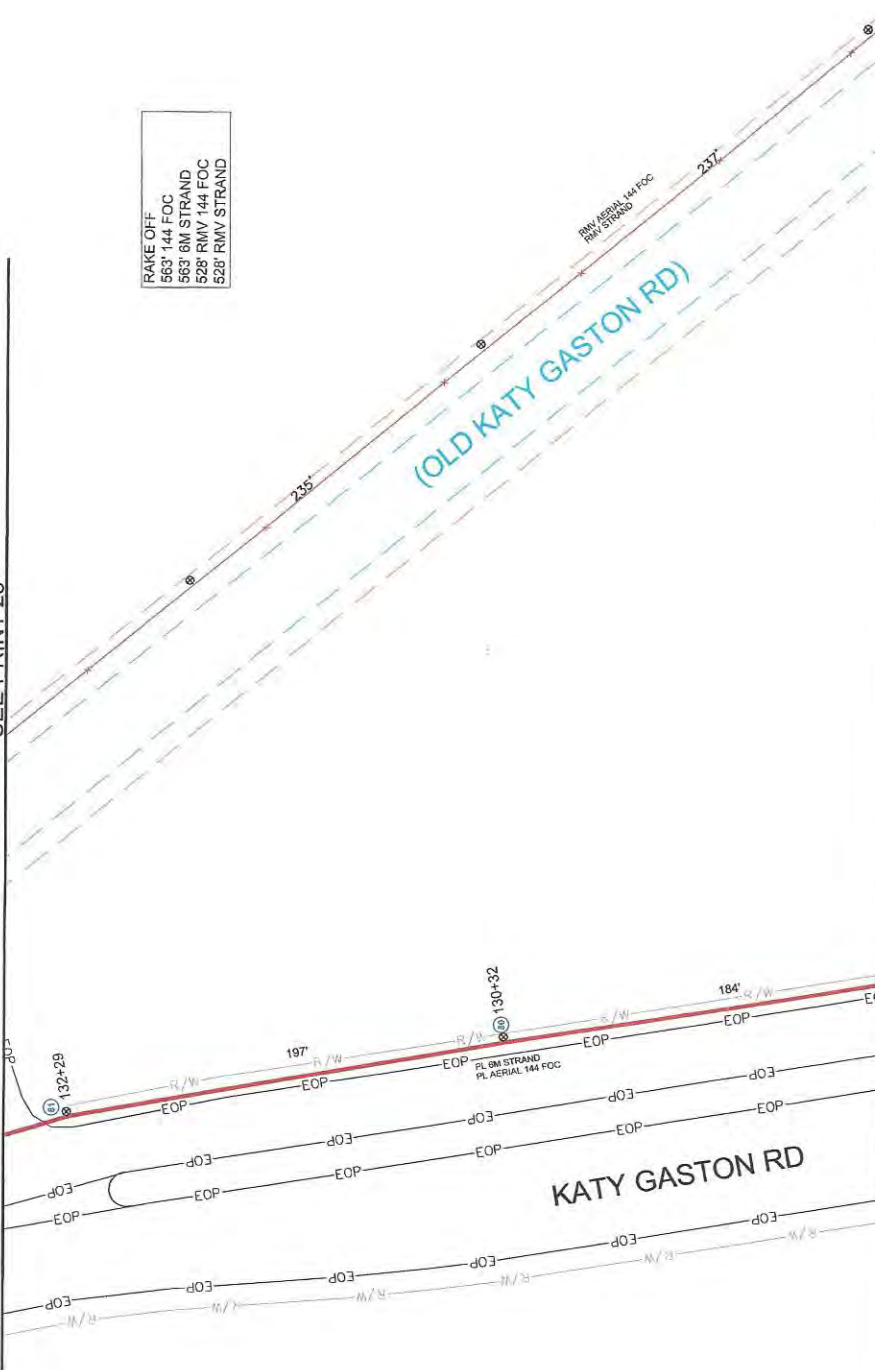
48 HOURS PRIOR TO EXCAVATING FOR NON-TELEPHONE UTILITIES LOCATES  
CALL 1-800-545-6005

CONTRACT STORM WATER SOLUTIONS, 24 HOURS PRIOR TO WORKING IN AREA FOR VEHICLE ACCESS 713-955-1044

**CENTERPOINT ENERGY NOTE:**  
 (X) POLE REFERENCE NUMBER  
 PLACE CABLE AND STRAND AT 18" HEIGHT  
 CENTERPOINT ENERGY POLE ATTACHMENT PERMIT REQUIRED

RAKE OFF  
810' RMV 144 FOC  
610' RMV STRAND  
2 RMV ANCHORS

SEE PRINT 25



CAUTION:  
HIGH VOLTAGE  
25 KV CENTERPOINT ENERGY

RAKE OFF  
563' 144 FOC  
563' 6M STRAND  
528' RMV 144 FOC  
528' RMV STRAND

**BYERS COMPANY**  
11000 W. 112th St., Suite 200  
Overland Park, MO 66213  
713-460-9100 (Fax)

**WESTPARK TOLLWAY EXTENSION FIBER RELOCATION**

En-Touch Engineer  
MURRAY PERNAK, Design By: BYERS

DRAWN BY: BYERS  
DATE: 07-02-2015  
KEY: IMP. 505E  
PLAT#: 24 OF 26  
DWG. NAME: WO15CFB1074

SEE PRINT 23

**CAUTION:**  
**UNDERGROUND GAS FACILITIES**  
Locations of CENTERPOINT ENERGY main lines (to include Unit Gas Transmission and/or Industrial Gas Supply Corporation where applicable) are shown in an approximate location only. Service lines are usually not shown. The contractor shall contact the Utility Coordinating Committee at (713) 223-8567 or 1-800-669-8344 a minimum of 48 hours prior to construction to have main service lines field located.



SEE PRINT 22

**CONTRACTORS:**  
THE LOCATIONS OF EXISTING TELEPHONE UTILITIES ARE SHOWN IN AN APPROXIMATE WAY ONLY AND HAVE NOT BEEN INDEPENDENTLY VERIFIED BY THE ENGINEER. THE CONTRACTOR SHALL BE FULLY RESPONSIBLE FOR VERIFYING THE LOCATION OF ALL UTILITIES BEFORE COMMENCING WORK, AND AGREES TO BE FULLY RESPONSIBLE FOR ANY AND ALL DAMAGES WHICH MIGHT BE OCCASIONED BY THE CONTRACTOR'S FAILURE TO EXACTLY LOCATE AND PRESERVE ANY AND ALL UTILITIES.

**48 HOURS PRIOR TO EXCAVATING FOR NON-TELEPHONE UTILITIES LOCATES**  
CALL 1-800-545-6005

**CONTACT STORM WATER SOLUTIONS, 84 HOURS PRIOR TO WORKING IN AREA FOR VEHICLE ACCESS 713-995-1044**

**CENTERPOINT ENERGY NOTE:**  
 (X) POLE REFERENCE NUMBER  
 PLACE CABLE AND STRAND AT 18' HEIGHT  
 CENTERPOINT ENERGY POLE ATTACHMENT PERMIT REQUIRED



CAUTION!  
HIGHER VOLTAGE  
25 KV, 60 KV & 115 KV  
CENTERPOINT ENERGY

RAKE OFF  
501' 144' FOC  
501' 6M STRAND  
568' RMV 144' FOC  
568' RMV STRAND  
2 ANCHOR ASSEMBLY

TO ENTOUCH  
SOURCE  
EQUIPMENT

PLC  
RMV  
149+56

PLC  
RMV  
137+26

PLC  
RMV  
148+85

PLC  
RMV  
136+56

PLC  
RMV  
147+17

PLC  
RMV  
134+88

PLC  
RMV  
146+47

PLC  
RMV  
134+18

SEE PRINT 26

SEE PRINT 24

(OLD KATY GASTON RD)  
KATY GASTON RD

PL 144' AERIAL 144' FOC  
RMV STRAND

PL 144' AERIAL 144' FOC  
RMV STRAND

PL 144' AERIAL 144' FOC  
RMV STRAND

PL 144' AERIAL 144' FOC  
RMV STRAND

PL 144' AERIAL 144' FOC  
RMV STRAND

PL 144' AERIAL 144' FOC  
RMV STRAND

PL 144' AERIAL 144' FOC  
RMV STRAND

PL 144' AERIAL 144' FOC  
RMV STRAND

PL 144' AERIAL 144' FOC  
RMV STRAND

PL 144' AERIAL 144' FOC  
RMV STRAND

PL 144' AERIAL 144' FOC  
RMV STRAND

PL 144' AERIAL 144' FOC  
RMV STRAND

PL 144' AERIAL 144' FOC  
RMV STRAND

**CONTRACTORS:**

THE LOCATIONS OF EXISTING TELEPHONE UTILITIES ARE SHOWN IN AN APPROXIMATE MANNER ONLY AND HAVE NOT BEEN INDEPENDENTLY VERIFIED. THE CONTRACTOR SHALL BE RESPONSIBLE FOR VERIFYING THE EXACT LOCATION OF ALL UTILITIES BEFORE COMMENCING WORK AND AGREES TO BE FULLY RESPONSIBLE FOR ANY AND ALL DAMAGES WHICH MIGHT BE OCCASIONED BY THE CONTRACTOR'S FAILURE TO EXACTLY LOCATE AND PRESERVE ANY AND ALL UTILITIES.

48 HOURS PRIOR TO EXCAVATING FOR NON-TELEPHONE UTILITIES LOCATES CALL 1-800-545-6005

CONTACT STORM WATER SOLUTIONS, 24 HOURS PRIOR TO WORKING IN AREA FOR VEHICLE ACCESS 713-995-1044

**CENTERPOINT ENERGY NOTE:**

(X) POLE REFERENCE NUMBER

PLACE CABLE AND STRAND AT 18' HEIGHT

CENTERPOINT ENERGY POLE ATTACHMENT PERMIT REQUIRED

**CAUTION:**

**UNDERGROUND GAS FACILITIES**

Locations of CENTERPOINT ENERGY main lines (to include Unit Gas Transmission and/or Industrial Gas Supply Corporation where applicable) are shown in an approximate location only. Service lines are usually not shown. The contractor shall contact the Utility Coordinating Committee at (713) 223-8567 or 1-800-569-8344 a minimum of 48 hours prior to construction to have main service lines field located.



**WESTPARK TOLLWAY EXTENSION FIBER RELOCATION**

En-Touch Engineer  
MURPHY FERRIS Design By BYERS

DRAWN BY: BYERS

DATE: 07-29-2015

REV: IMP. 02SE

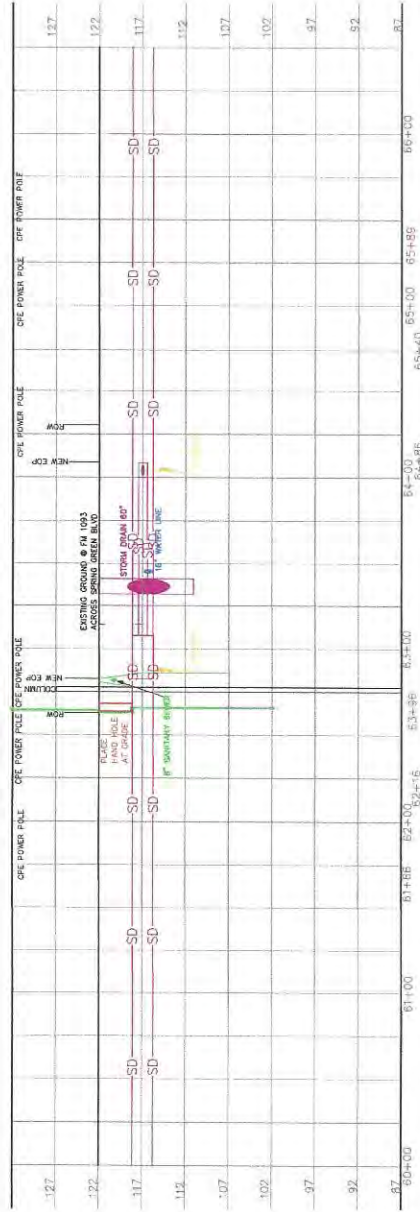
PLAT: 26 OF 28

DWG. NAME: W015CFB1074





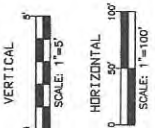
# PROFILE 1 - LOOKING NORTH FROM FM 723 NEW AERIAL CABLE ACROSS SPRING GREEN BLVD



**CONTRACTORS:**  
THE LOCATIONS OF EXISTING TELEPHONE UTILITIES ARE SHOWN IN AN APPROXIMATE WAY ONLY AND HAVE NOT BEEN INDEPENDENTLY VERIFIED BY THE OWNER OR ITS REPRESENTATIVE. THE CONTRACTOR SHALL DETERMINE THE EXACT LOCATION OF ALL EXISTING UTILITIES PRIOR TO ANY WORK. CONTRACTOR SHALL BE FULLY RESPONSIBLE FOR ANY AND ALL DAMAGES WHICH MAY BE INCURRED BY THE CONTRACTOR'S FAILURE TO EXACTLY LOCATE AND PRESERVE ANY AND ALL UTILITIES.  
48 HOURS PRIOR TO EXCAVATING FOR NEW TELEPHONE UTILITIES LOCATES  
CALL 1-800-545-6005  
CONTACT STORM WATER SOLUTIONS, 84 HOURS PRIOR TO WORKING IN AREA FOR VEHICLE ACCESS 713-935-1044

## PROFILE FOR SPRING GREEN CROSSING

**CAUTION:**  
**UNDERGROUND GAS FACILITIES**  
Locations of CENTERPOINT ENERGY main lines (to include Unit Gas Transmission and/or Industrial Gas Supply Corporation where applicable) are shown in an approximate location only. Service lines are usually not shown. The contractor shall contact the Utility Coordinating Committee at (713) 233-6567 or 1-800-669-8344 a minimum of 48 hours prior to construction to have main service lines field located.



**CENTERPOINT ENERGY NOTE:**  
 POLE REFERENCE NUMBER  
 PLACE CABLE AND STRAND AT 18' HEIGHT  
 CENTERPOINT ENERGY POLE ATTACHMENT PERMIT REQUIRED

**BYERS CONSULTING**  
Professional Engineers  
713-466-0100  
www.byersconsulting.com

**WESTPARK TOLLWAY EXTENSION FIBER RELOCATION**

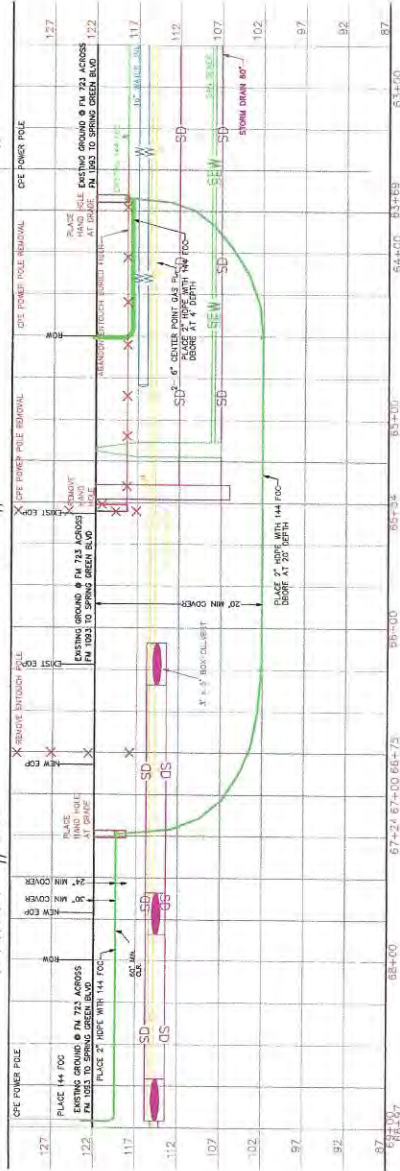
<p>En-Touch Engineer MURPHY FENNAK, Design By: BYERS</p> <p>DRAWN BY: BYERS</p> <p>DATE: 07-02-2015</p> <p>KEY MAP</p> <p>PLAT: 27 OF 28</p> <p>SNG NAME: WO15CFB1074</p>	<p>En-Touch Engineering 11111 Westpark Tollway Suite 100 Houston, TX 77060-1111</p>
---	---

PROFILE 2 - LOOKING WEST FROM FM 1093

PRINT #10

PRINT #11

PRINT #12



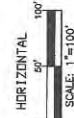
**CONTRACTORS:**

THE LOCATIONS OF EXISTING TELEPHONE UTILITIES ARE SHOWN IN AN APPROXIMATE WAY ONLY AND HAVE NOT BEEN INDEPENDENTLY VERIFIED BY THE CONTRACTOR. THE CONTRACTOR SHALL BE RESPONSIBLE FOR VERIFYING THE EXACT LOCATION OF ALL UTILITIES BEFORE COMMENCING WORK, AND AGREES TO BE FULLY RESPONSIBLE FOR ANY AND ALL DAMAGES WHICH MIGHT BE OCCASIONED BY THE CONTRACTOR'S FAILURE TO EXACTLY LOCATE AND PRESERVE ANY AND ALL UTILITIES.

48 HOURS PRIOR TO EXCAVATING FOR NON-TELEPHONE UTILITIES LOCATES CALL 1-800-545-6005

CONTACT STORM WATER SOLUTIONS, 24 HOURS PRIOR TO WORKING IN AREA FOR VEHICLE ACCESS 713-995-1044

**PROFILE FOR WEST PARK TOLLWAY CROSSING**



**CAUTION:**  
**UNDERGROUND GAS FACILITIES**  
 Locations of CENTERPOINT ENERGY main lines (to include Unit Gas Transmission and/or Industrial Gas Supply Corporation where applicable) are shown in an approximate location only. Service lines are usually not shown. The contractor shall contact the Utility Coordinating Committee at (713) 223-6957 or 1-800-869-8344 a minimum of 48 hours prior to construction to have main service lines field located.

**CENTERPOINT ENERGY NOTE:**

⊗ POLE REFERENCE NUMBER

PLACE CABLE AND STRAND AT 18" HEIGHT

CENTERPOINT ENERGY POLE ATTACHMENT PERMIT REQUIRED

**WESTPARK TOLLWAY EXTENSION FIBER RELOCATION**

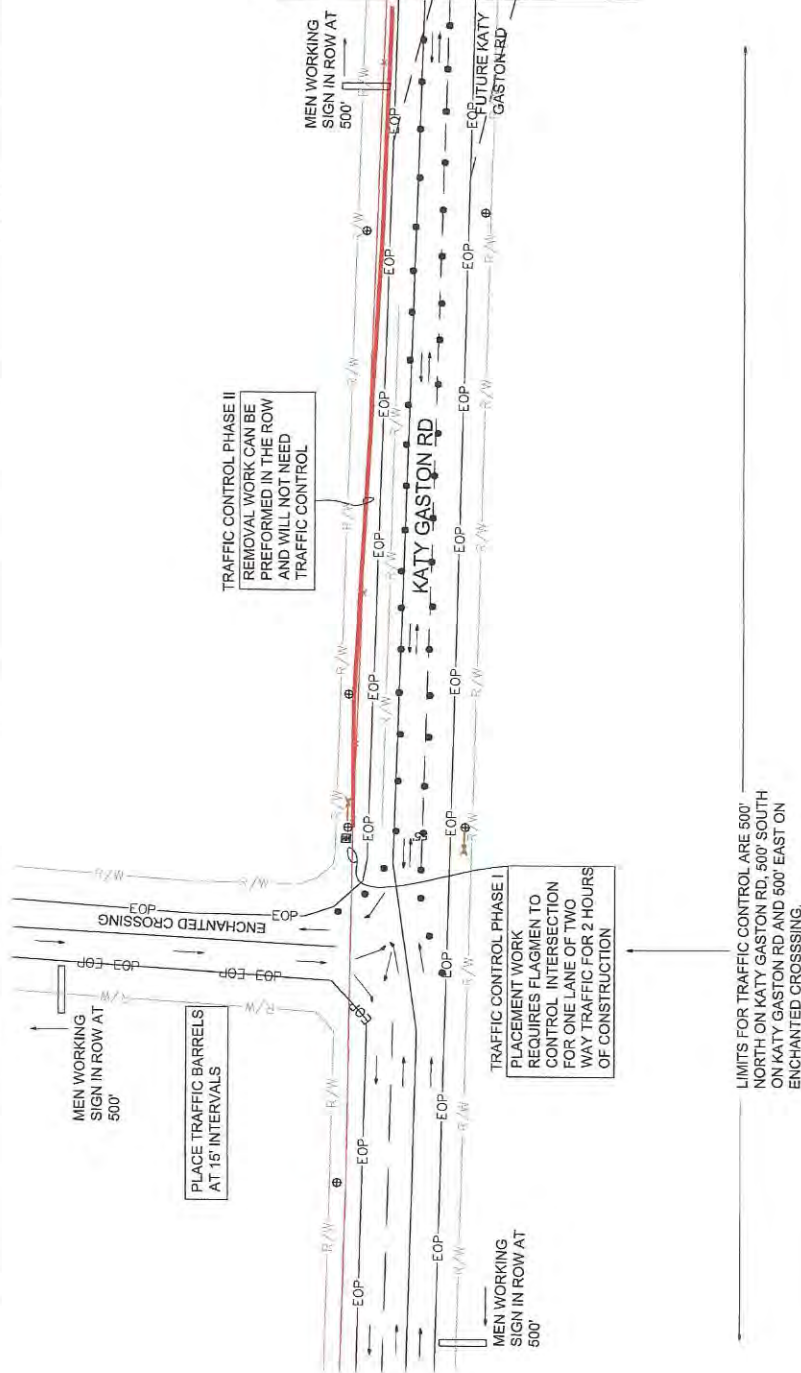


En-Touch Engineer	MESELEY FESINA, Design By EYERS
DRAWN BY:	EYERS
DATE:	07-06-2015
KEY MAP:	
PLAT:	28 OF 28
SHEET NAME:	WO15CFB1074



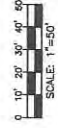


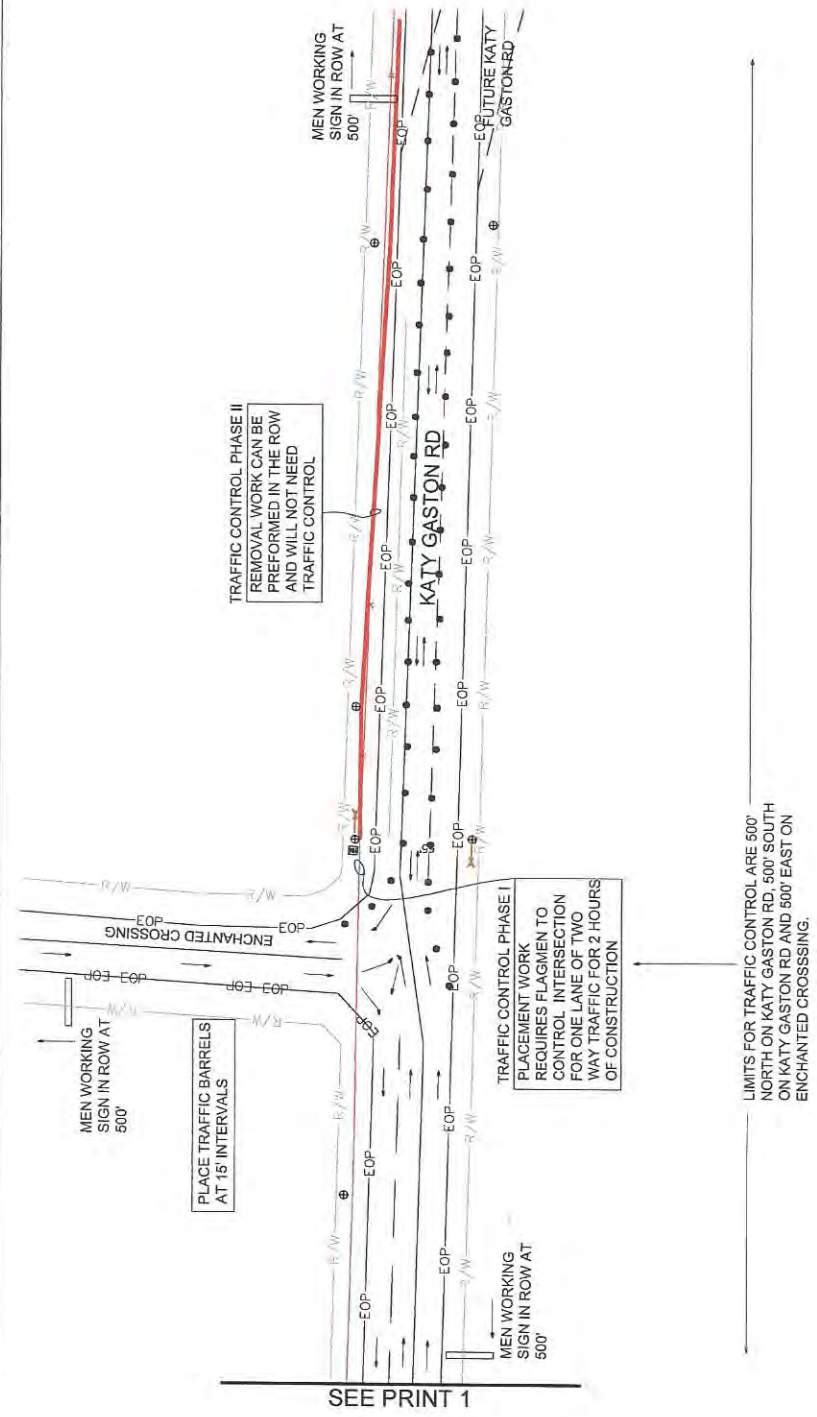
SEE PRINT 2



# TRAFFIC CONTROL

	<b>WESTPARK TOLLWAY EXTENSION FIBER RELOCATION</b>	
	En-Touch Engineer MEBLEY FENNAK, Design By: BYERS	DIMWV BY: BYERS
	DATE: 01-09-2015	KEY MAP:
	PLAN: TRAFFIC CONTROL, 1 OF 2	DWG NAME: WO15CFB1074

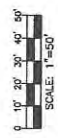




SEE PRINT 1

TRAFFIC CONTROL

	<b>WESTPARK TOLLWAY EXTENSION FIBER RELOCATION</b>
	En-Touch Engineer WESLEY PENNIX, Design By: BYERS
DOWN BY: BYERS	DATE: 07-09-2015
KEY: IMP.	PLAT: TRAFFIC CONTROL 2 OF 2
DWG. NAME: WO15CFB1074	



# **Exhibit C**

## **En-Touch Systems, Inc.**

### **Schedule**

**Start Date – January 1, 2016**

(Pending Completion of CenterPoint Energy Overhead  
Relocation)

**Completion Date – February 29, 2016**

(Based on January 1, 2016 Start Date)