

REVIEW BY FORT BEND COUNTY COMMISSIONERS COURT

On this 5th day of January, 2016, Commissioners Court came on to be heard and reviewed the accompanying notice of JR2 Energy Services, Inc. / Center Point Energy Houston Electric, LLC Job Location 4007 BEASLEY WEST END RD, BEASLEY, TX 77417 Date 12/8/2015 Bond No. 22001420, Permit No. 2015-4543 to make use of certain Fort Bend County property subject to, "A Revised Order Regulating the Laying, Construction, Maintenance, and Repair of Buried Cables, Conduits, and Pole Lines, In, Under, Across or Along Roads, Streets, Highways, and Drainage Ditches in Fort Bend County, Texas, Under the Jurisdiction of the Commissioners Court of Fort Bend County, Texas," as passed by the Commissioners Court of Fort Bend County, Texas the 3rd day of August, 1987, recorded in Volume _____ of the Minutes of the Commissioners Court of Fort Bend County, Texas, to the extent that such order is not inconsistent with Article 1436a, Vernon's Texas Civil Statutes. Upon Motion of Commissioner _____, seconded by Commissioner _____, duly put and carried, it is ORDERED, ADJUDGED AND DECREED that said notice of said above purpose is hereby acknowledged by the Commissioners Court of Fort Bend County, Texas, and that said notice be placed on record according to the regulation order thereof.

Notes:

1. Evidence of review by the Commissioners Court must be kept on the job site and failure to do so constitutes grounds for job shutdown.
2. Written notices are required:
 - a. 48 hours in advance of construction start up, and
 - b. when construction is completed and ready for final inspection
 Mail notices to: Permit Administrator
 Fort Bend County Engineering
 301 Jackson Street
 Richmond, Texas 77469
 281-633-7500
3. This permit expires one (1) year from date of permit if construction has not commenced.

By: Rich J Stargle, PE, PTOE
for County Engineer

Presented to Commissioners Court and approved.
Recorded in Volume _____
Minutes of Commissioners Court

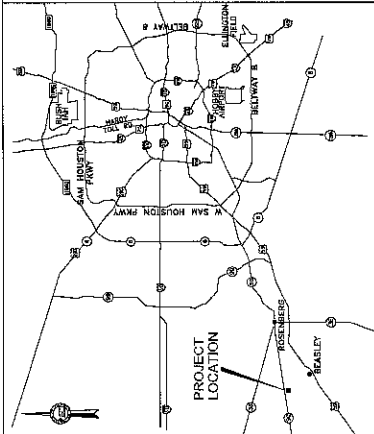
By: N/A
Drainage District Engineer/Manager

Clerk of Commissioners Court

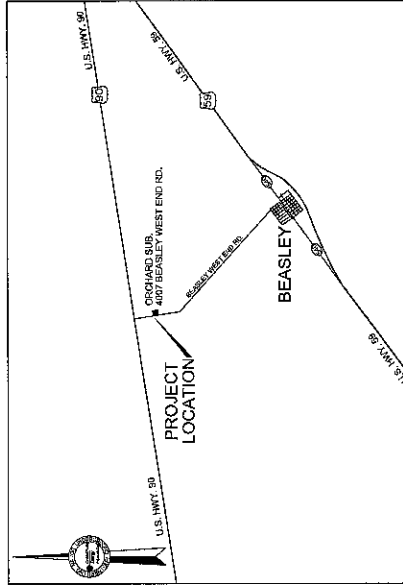
By: _____
Deputy

CenterPoint Energy

MAJOR UNDERGROUND ENGINEERING UNDERGROUND DUCTBANK INSTALLATION AT ORCHARD SUBSTATION 4007 BEASLEY WEST END ROAD BEASLEY, TEXAS



LOCATION MAP
Not To Scale



VICINITY MAP
Not To Scale
KEY MAP NO.: 601V
LAMBERT GRID: 4047A3
ZIP CODE: 77417

GENERAL CONSTRUCTION NOTES:

- ALL UTILITIES PRESENTED ON THESE DRAWINGS ARE SHOWN BASED ON THE INFORMATION PROVIDED BY THE UTILITY OWNERS. VERIFY THE EXACT LOCATIONS PRIOR TO COMMENCING CONSTRUCTION. CONTRACTOR SHALL NOTIFY TEXAS ONE CALL AT (713) 223-4687 AT LEAST 48 HOURS BEFORE PROCEEDING WITH ANY EXCAVATION.
- ADEQUATE DRAINAGE SHALL BE MAINTAINED AT ALL TIMES DURING CONSTRUCTION AND ANY DRAINAGE DITCH OR STRUCTURE DISTURBED DURING CONSTRUCTION SHALL BE RESTORED TO THE SATISFACTION OF THE OWNING AUTHORITY.
- CONTRACTOR SHALL TAKE NECESSARY PRECAUTIONS TO PROTECT ROOT SYSTEMS OF SHRUBS, PLANTS AND TREES ALONG THE AREA OF EXCAVATION.
- THE CONTRACTOR SHALL COMPLY WITH THE LATEST EDITION OF OSHA REGULATIONS AND THE STATE OF TEXAS LAWS CONCERNING EXCAVATION.
- CONTRACTOR SHALL PREPARE A SET OF "AS-BUILT" DRAWINGS SHOWING ANY FIELD CHANGES MADE TO THE APPROVED ENGINEERING PLANS AND SUBMIT TO THE DESIGN CONSULTANT FOR SUBMISSION TO THE CITY ENGINEER.

**ONE-CALL NOTIFICATION SYSTEM
CALL BEFORE YOU DIG!!!**
(713) 223-4687 (IN HOUSTON)
(NEW STATEWIDE SERVICE (TOLL-FREE HOUSTON))
1-800-545-6808

INDEX TO DRAWINGS

SHEET NO.	DESCRIPTION
1	TITLE SHEET
2	MANHOLE
3	TRAFFIC CONTROL PLAN

NOTES:

- ALL INFORMATION CONCERNING TYPE AND LOCATION OF UNDERGROUND UTILITIES IS NOT GUARANTEED TO BE ACCURATE OR ALL INCLUSIVE. THE CONTRACTOR IS RESPONSIBLE FOR MAKING HIS OWN DETERMINATIONS AS TO TYPE AND LOCATION OF UNDERGROUND UTILITIES AS MAY BE NECESSARY TO PROTECT THEM. CONTRACTOR SHALL VERIFY LOCATION OF UNDERGROUND PIPELINES, CONDUITS AND STRUCTURES BY CONTACTING OWNERS OF UNDERGROUND UTILITIES OR BY EXCAVATING IN ADVANCE OF CONSTRUCTION.
- THE CONTRACTOR IS RESPONSIBLE FOR DETERMINING THE EXACT LOCATION OF ALL UTILITIES WHEN AND WHERE THEY FALL IN THE PATH OF CONSTRUCTION.
- THE CONTRACTOR IS ALSO RESPONSIBLE FOR CONTACTING THE UTILITY OWNERS AT LEAST 48 HOURS PRIOR TO ANY CONSTRUCTION. 1-800-245-4648, FORTY-EIGHT (48) HOURS PRIOR TO ANY CONSTRUCTION.
- ONLY THE CONTRACTOR SHALL DETERMINE THE EXACT LOCATION OF ALL UTILITIES. THE CONTRACTOR SHALL BE RESPONSIBLE FOR ANY AND ALL DAMAGES WHICH MIGHT BE OCCASIONED BY THIS FAILURE TO EXACTLY LOCATE AND PRESERVE THESE UNDERGROUND UTILITIES.
- ALL PROPOSED FACILITIES SHALL MAINTAIN 12' CLEAR FROM ALL UTILITIES.

CAUTION: UNDERGROUND GAS FACILITIES

Locations of CenterPoint Energy main lines (to include Unit Gas Transmission and/or Industrial Gas Supply Corporation where applicable) are shown in an approximate manner on this drawing. The drawing is not intended to be a final engineering or conflict analysis but our facilities are shown in approximate location. It does not imply that a conflict analysis has been made. The contractor shall contact the Utility Coordination Committee at (713) 223-4687 or 1-800-669-8344 a minimum of 48 hours prior to construction to have main and service lines field located.

- When CenterPoint Energy pipe line markings are not visible, call (713) 967-4037 (7:00 a.m. to 4:30 p.m.) for status of line location request before excavation begins.
- When excavating within eighteen (18') of the indicated location of CenterPoint Energy facilities, excavation must be accomplished using non-mechanized excavation procedures.
- When CenterPoint Energy facilities are exposed, sufficient support must be provided to the facilities to prevent excessive stress on the piping.

The contractor is fully responsible for any damages caused by his failure to exactly locate and preserve these underground facilities.

WARNING: OVERHEAD ELECTRICAL FACILITIES

Overhead lines exist on the property. We have not attempted to mark these lines since they are not shown on the drawing. The contractor shall be responsible for any damages caused by his failure to exactly locate and preserve these overhead electrical facilities. Texas law, Section 752, Health & Safety Code, forbids all activities in which persons or things MAY come within ten (10) feet of live overhead high voltage lines. Parties responsible for the work, including contractors, are legally responsible for the safety of construction workers and the public. This law is enforceable by the State of Texas. The contractor shall be held liable for any damages caused by his failure to exactly locate and preserve these overhead electrical facilities. Call CenterPoint Energy at (713) 207-2222.



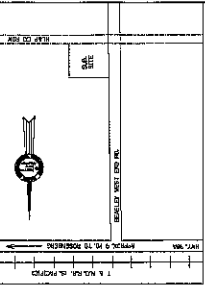
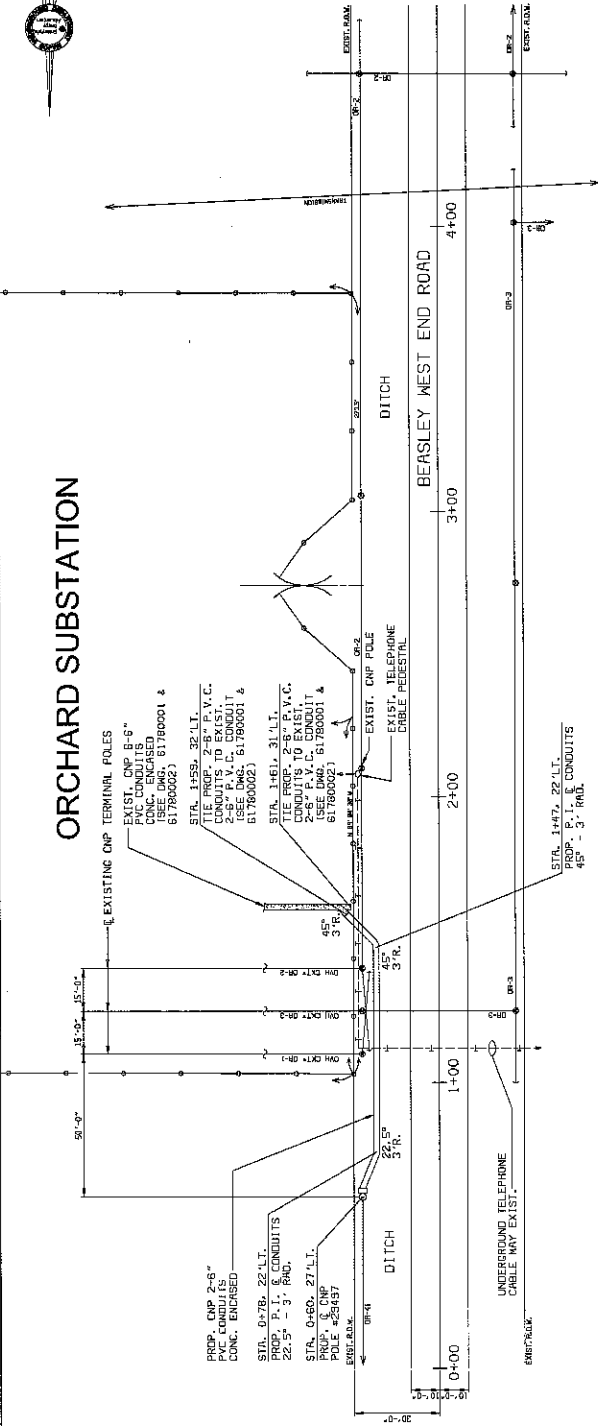
7322 SW Freeway
Ste. #1750
Houston, Texas 77036
713.552.0100

Professional Engineer
Texas Registration Number F-16451
SHEET NO. 02 OF 3 SHEETS

CNP DWG. # 61780003



ORCHARD SUBSTATION



VICINITY MAP (N.T.S.)
KEY MAP: 601V
SCALE IN FEET
SCALE: 1"=200'

THE ACCURACY OF THE UNDERGROUND UTILITIES NEED TO BE FIELD VERIFIED FOR ACTUAL LOCATION.

BASELINE INFORMATION
BASELINE IS CENTERED ON BEASLEY WEST END ROAD.

CONTROL BENCHMARK
1. ALL COORDINATES SHOWN HEREON ARE REFERENCED TO THE TEXAS STATE PLANE COORDINATE SYSTEM, SOUTH CENTRAL ZONE, NAD 83 (1983 ADJ.).
2. ALL ELEVATIONS SHOWN HEREON ARE REFERENCED TO THE 1985 MEAN SEA LEVEL DATUM OF THE PEGASUS (MSL) ADJ.

NO.	DATE	REVISION	BY	CHKD.	APP.

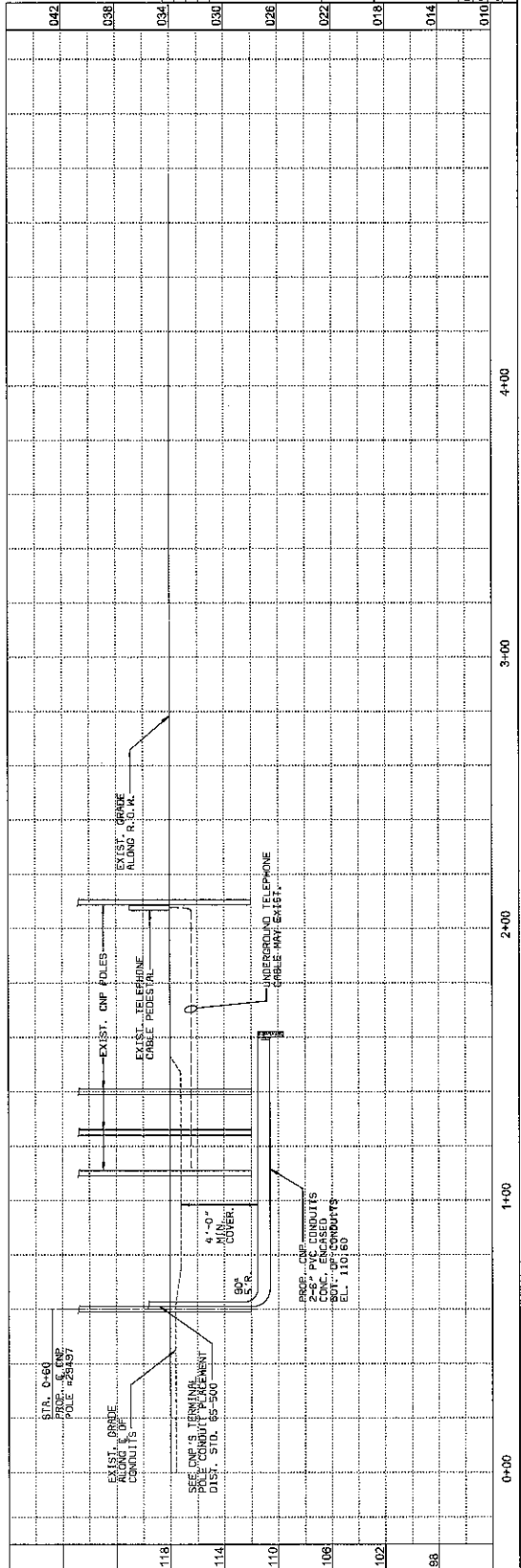


7322 SW Freeway
Ste. #1780
Houston, TX 77074
713.265.0150
Texas Registration Number F-16451

CenterPoint Energy
NATION WIDE ENGINEERING
PLAN AND PROFILE OF UNDERGROUND CONDUIT
ORCHARD SUBSTATION
4007 BEASLEY WEST END ROAD
BEASLEY, TEXAS

SCALE: HORIZ. 1"=200' VERT. 1"=4'
SHEET NO. 2 OF 3
DATE: 11/11/11

61780003



118 STR. 0+60
PROP. 6" P.C.
POLE #28497

EXIST. GRADE
ALONG L.O.P.
CONDUITS

EXIST. GRADE
ALONG R.O.W.

EXIST. TELEPHONE
CABLE PEDESTAL

EXIST. GRADE
ALONG R.O.W.

UNDERGROUND TELEPHONE
CABLE MAY EXIST

114 STR. 0+60, 27 L.T.
PROP. 6" P.C.
POLE #28497

EXIST. CONDUIT
DIST. STD. 85-500

4'-0"
COVER

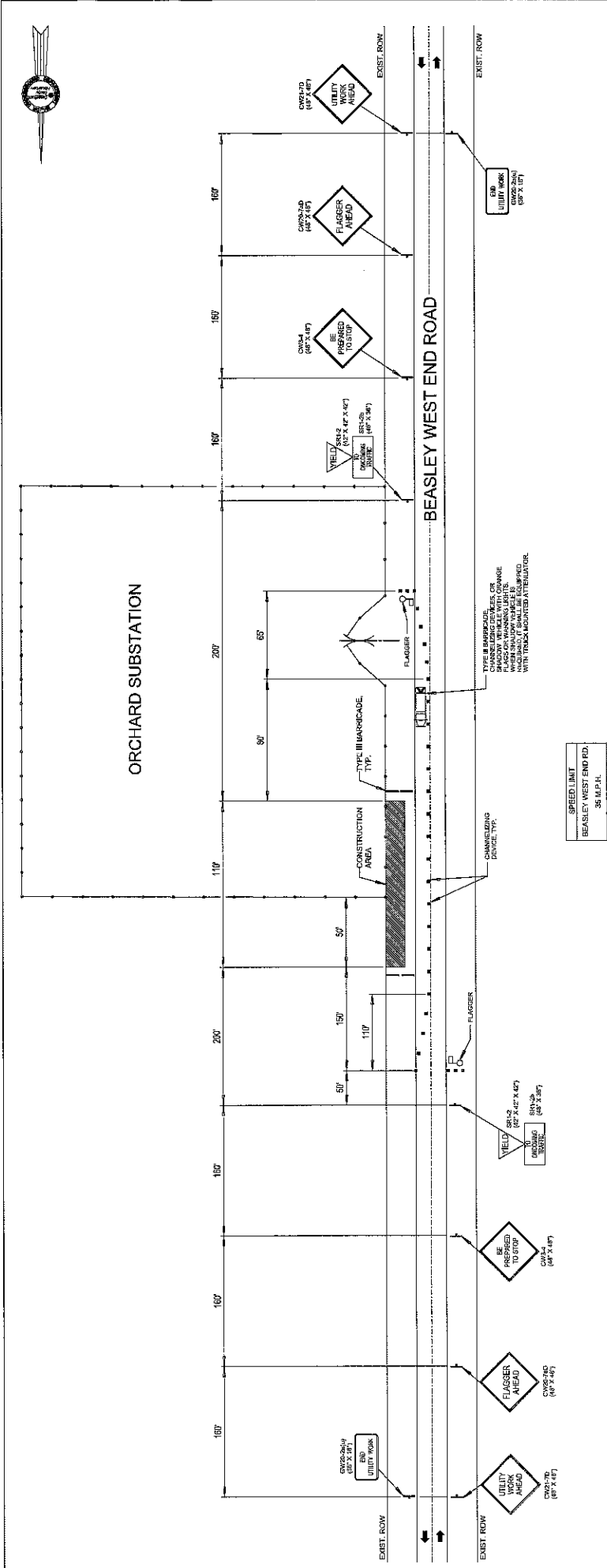
110 STR. 0+76, 22 L.T.
PROP. P.I. & CONDUITS
22.5' - 3' RAD.

PROP. 6" P.C.
CONC. ENCASED
80" OF CONDUITS
EL. 110.60

108 STR. 1+47, 22 L.T.
PROP. P.I. & CONDUITS
45' - 3' RAD.

102



88



TRAFFIC CONTROL PLAN

TRAFFIC CONTROL GENERAL NOTES:

- CONTRACTOR SHALL PROVIDE AND INSTALL TRAFFIC CONTROL DEVICES IN CONFORMANCE WITH PART VI OF THE TEXAS MANUAL ON UNIFORM TRAFFIC CONTROL DEVICES, TEXAS MUTCD, MOST RECENT EDITION (AS REVISED) DURING CONSTRUCTION.
- CONTRACTOR TO NOTIFY THE "UNDERGROUND UTILITY COORDINATING COMMITTEE" (1-800-688-8344) 48 HOURS BEFORE STARTING WORK.
- IF THE CONTRACTOR CHOOSES TO USE A DIFFERENT METHOD OF "TRAFFIC CONTROL PLANS" DURING THE CONSTRUCTION THAN WHAT IS OUTLINED IN CONTRACT DRAWINGS, (SHE SHALL BE RESPONSIBLE TO PREPARE AND SUBMIT AN ALTERNATE SET OF PLANS TO PLAN REVIEW BEFORE WORK BEGINS). THESE PLANS SHALL BE DRAWN TO SCALE ON REPRODUCIBLE MYLARS AND SEALED BY A REGISTERED PROFESSIONAL ENGINEER IN THE STATE OF TEXAS. PLANS WILL BECOME A PART OF THE CONTRACT DRAWINGS.
- THE TRAFFIC CONTROL SIGNS, DEVICES, AND BARRICADES SHOWN ON THESE DRAWINGS CONSTITUTE MINIMUM REQUIREMENTS AND ARE NOT INTENDED TO COVER SPECIAL CIRCUMSTANCES OR OTHER CONDITIONS THAT MAY ARISE DUE TO UNFORESSEEN FIELD CONDITIONS. THE CONTRACTOR SHALL MAINTAIN SAFE ACCESS (INGRESS AND EGRESS) TO ADJOINING PROPERTIES AT ALL TIMES. THE CONTRACTOR SHALL INSURE THAT ALL BARRICADES, SIGNS, CHANNELIZING DEVICES, WARNING LIGHTS, AND TRAFFIC HANDLING DEVICES ARE MAINTAINED IN A CLEAN FUNCTIONAL CONDITION AT ALL TIMES.
- CONTRACTOR SHALL COVER OPEN EXCAVATIONS WITH STEEL PLATES ANCHORED PROPERLY DURING NON-WORKING HOURS AND OPEN LANES FOR NORMAL TRAFFIC FLOW.
- ALL TRAVEL LANES SHALL BE MINIMUM OF 10' WIDE.
- NO WORK SHALL BE PERFORMED IN THE TRAVEL WAY INCLUDING LOADING AND UNLOADING OF TRUCKS.
- WHERE APPLICABLE, THE CONTRACTOR SHALL MAINTAIN ALL EXISTING "STOP" SIGNS, STREET NAME SIGNS, WARNING SIGNS, AND PAVEMENT MARKINGS IN PLACE, AND PROPER OPERATION OF TRAFFIC SIGNALS.
- THE CONTRACTOR SHALL PROVIDE AND MAINTAIN BARRICADES AND/OR DEVICES AS REQUIRED TO PROTECT PEDESTRIANS WITHIN THE PROJECT AREA.
- CONTRACTOR SHALL MAINTAIN SAFE ACCESS (INGRESS AND EGRESS) TO ADJOINING PROPERTIES AT ALL TIMES.
- CONTRACTOR SHALL INSURE THAT ALL BARRICADES, SIGNS, CHANNELIZING DEVICES, WARNING LIGHTS, AND TRAFFIC HANDLING DEVICES ARE MAINTAINED IN A CLEAN FUNCTIONAL CONDITION AT ALL TIMES.
- CONTRACTOR SHALL COVER OPEN EXCAVATIONS WITH STEEL PLATES ANCHORED PROPERLY DURING NON-WORKING HOURS AND OPEN LANES FOR NORMAL TRAFFIC FLOW.
- ALL TRAVEL LANES SHALL BE MINIMUM OF 10' WIDE.
- CONTRACTOR SHALL MAINTAIN ONE LANE OF TRAFFIC IN EACH DIRECTION DURING WORKING HOURS AND MAINTAIN TRAFFIC LANES(S) ACCORDING TO TRAFFIC CONTROL PLANS DURING WORKING HOURS.
- IN THE EVENT WHEN NO "TRAFFIC CONTROL PLANS" EXIST AS A PART OF CONTRACT DRAWINGS CONTRACTOR SHALL PREPARE PLANS AND SUBMIT TO PLAN REVIEW SECTION FOR APPROVAL. TEN WORKING DAYS PRIOR TO IMPLEMENTATION.
- THE PLANS SHALL BE DRAWN TO SCALE ON REPRODUCIBLE MYLARS AND SEALED BY A LICENSED ENGINEER IN THE STATE OF TEXAS. PLANS WILL BECOME A PART OF THE CONTRACT DRAWINGS.
- APPROVED COPIES OF "TRAFFIC CONTROL PLANS" AND LANE/SIDEWALK CLOSURE PERMITS SHALL BE AVAILABLE FOR INSPECTION AT JOB SITE AT ALL TIMES.

	7322 SW Freeway Ste. 7170 Houston, TX 713.559.0150
	Texas Registration Number F-16451
	
AN ENGINEERING FIRM TRAFFIC CONTROL PLAN ORCHARD SUBSTATION 4007 BEASLEY WEST END ROAD BEASLEY, TEXAS	
DRAWN BY: VEE ANDERSON CHECKED BY: APPROVED BY: DATE:	SCALE: NOT TO SCALE SHEET NO. 3 OF 3 61780003