

PLAT RECORDING SHEET

PLAT NAME: Aliana, Sec. 35

PLAT NO: _____

ACREAGE: 18.913

LEAGUE: Jesse H. Cartwright League

ABSTRACT NUMBER: 16

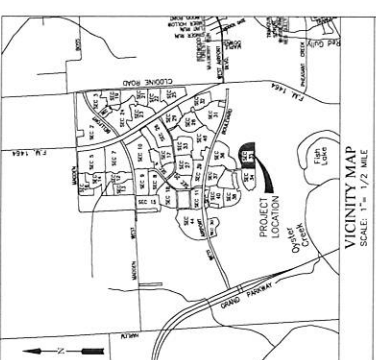
NUMBER OF BLOCKS: 2

NUMBER OF LOTS: 45

NUMBER OF RESERVES: 3

OWNERS: Aliana Development Company, a Texas Corporation

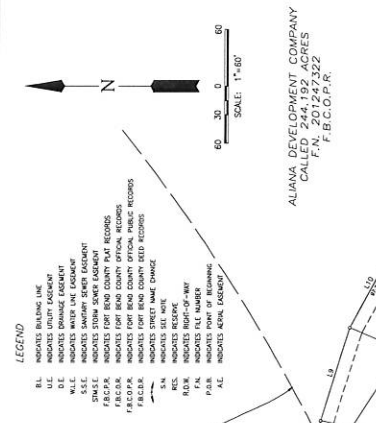
(DEPUTY CLERK)



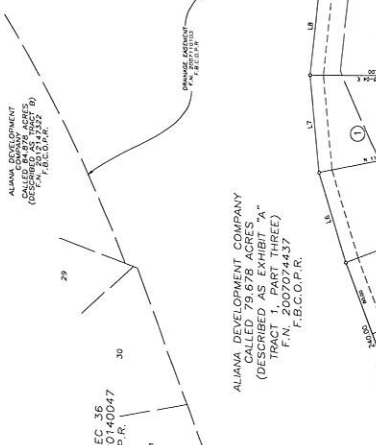
VICINITY MAP
SCALE: 1" = 1/2 MILE
KEY MAP NO. 567A

LINE TABLE

LINE BEARING	DISTANCE
L1 N 89-50-24 E	103.23
L2 N 02-50-20 W	29.84
L3 N 89-50-24 E	103.23
L4 N 01-53-09 E	75.57
L5 N 72-28-43 E	102.95
L6 N 89-50-24 E	103.23
L7 N 01-53-09 E	75.57
L8 N 72-28-43 E	102.95
L9 N 89-50-24 E	103.23
L10 N 01-53-09 E	75.57
L11 N 72-28-43 E	102.95
L12 N 89-50-24 E	103.23
L13 N 01-53-09 E	75.57
L14 N 72-28-43 E	102.95
L15 N 89-50-24 E	103.23
L16 N 01-53-09 E	75.57
L17 N 72-28-43 E	102.95
L18 N 89-50-24 E	103.23
L19 N 01-53-09 E	75.57
L20 N 72-28-43 E	102.95
L21 N 89-50-24 E	103.23
L22 N 01-53-09 E	75.57
L23 N 72-28-43 E	102.95
L24 N 89-50-24 E	103.23
L25 N 01-53-09 E	75.57
L26 N 72-28-43 E	102.95
L27 N 89-50-24 E	103.23
L28 N 01-53-09 E	75.57
L29 N 72-28-43 E	102.95
L30 N 89-50-24 E	103.23
L31 N 01-53-09 E	75.57
L32 N 72-28-43 E	102.95
L33 N 89-50-24 E	103.23
L34 N 01-53-09 E	75.57
L35 N 72-28-43 E	102.95
L36 N 89-50-24 E	103.23
L37 N 01-53-09 E	75.57
L38 N 72-28-43 E	102.95
L39 N 89-50-24 E	103.23
L40 N 01-53-09 E	75.57
L41 N 72-28-43 E	102.95
L42 N 89-50-24 E	103.23
L43 N 01-53-09 E	75.57
L44 N 72-28-43 E	102.95
L45 N 89-50-24 E	103.23
L46 N 01-53-09 E	75.57
L47 N 72-28-43 E	102.95
L48 N 89-50-24 E	103.23
L49 N 01-53-09 E	75.57
L50 N 72-28-43 E	102.95
L51 N 89-50-24 E	103.23
L52 N 01-53-09 E	75.57
L53 N 72-28-43 E	102.95
L54 N 89-50-24 E	103.23
L55 N 01-53-09 E	75.57
L56 N 72-28-43 E	102.95
L57 N 89-50-24 E	103.23
L58 N 01-53-09 E	75.57
L59 N 72-28-43 E	102.95
L60 N 89-50-24 E	103.23
L61 N 01-53-09 E	75.57
L62 N 72-28-43 E	102.95
L63 N 89-50-24 E	103.23
L64 N 01-53-09 E	75.57
L65 N 72-28-43 E	102.95
L66 N 89-50-24 E	103.23
L67 N 01-53-09 E	75.57
L68 N 72-28-43 E	102.95
L69 N 89-50-24 E	103.23
L70 N 01-53-09 E	75.57
L71 N 72-28-43 E	102.95
L72 N 89-50-24 E	103.23
L73 N 01-53-09 E	75.57
L74 N 72-28-43 E	102.95
L75 N 89-50-24 E	103.23
L76 N 01-53-09 E	75.57
L77 N 72-28-43 E	102.95
L78 N 89-50-24 E	103.23
L79 N 01-53-09 E	75.57
L80 N 72-28-43 E	102.95
L81 N 89-50-24 E	103.23
L82 N 01-53-09 E	75.57
L83 N 72-28-43 E	102.95
L84 N 89-50-24 E	103.23
L85 N 01-53-09 E	75.57
L86 N 72-28-43 E	102.95
L87 N 89-50-24 E	103.23
L88 N 01-53-09 E	75.57
L89 N 72-28-43 E	102.95
L90 N 89-50-24 E	103.23
L91 N 01-53-09 E	75.57
L92 N 72-28-43 E	102.95
L93 N 89-50-24 E	103.23
L94 N 01-53-09 E	75.57
L95 N 72-28-43 E	102.95
L96 N 89-50-24 E	103.23
L97 N 01-53-09 E	75.57
L98 N 72-28-43 E	102.95
L99 N 89-50-24 E	103.23
L100 N 01-53-09 E	75.57



ALIANA DEVELOPMENT COMPANY
CALLED 79,678 ACRES
TRACT 1, PART THREE
F.B.C.P.R.



ALIANA DEVELOPMENT COMPANY
CALLED 79,678 ACRES
TRACT 1, PART THREE
F.B.C.P.R.



ALIANA DEVELOPMENT COMPANY
CALLED 79,678 ACRES
TRACT 1, PART THREE
F.B.C.P.R.



ALIANA DEVELOPMENT COMPANY
CALLED 79,678 ACRES
TRACT 1, PART THREE
F.B.C.P.R.

CURVE TABLE

CURVE	RADIUS	DELTA	ARC	TANGENT	CHORD	CHORD BEARING
C1	400.00	19-27-56	128.62	63.02	128.56	N 79-40-22 E
C2	400.00	5-56-29	37.33	19.88	37.31	N 80-52-53 E
C3	400.00	19-27-56	128.62	63.02	128.56	N 79-40-22 E
C4	200.00	31-53-58	37.34	17.92	36.67	N 80-34-39 W
C5	200.00	14-29-20	132.76	65.74	132.61	N 81-15-21 E
C6	200.00	14-29-20	132.76	65.74	132.61	N 81-15-21 E
C7	200.00	14-29-20	132.76	65.74	132.61	N 81-15-21 E
C8	200.00	14-29-20	132.76	65.74	132.61	N 81-15-21 E
C9	200.00	14-29-20	132.76	65.74	132.61	N 81-15-21 E
C10	200.00	14-29-20	132.76	65.74	132.61	N 81-15-21 E
C11	200.00	14-29-20	132.76	65.74	132.61	N 81-15-21 E
C12	200.00	14-29-20	132.76	65.74	132.61	N 81-15-21 E
C13	200.00	14-29-20	132.76	65.74	132.61	N 81-15-21 E
C14	200.00	14-29-20	132.76	65.74	132.61	N 81-15-21 E
C15	200.00	14-29-20	132.76	65.74	132.61	N 81-15-21 E
C16	200.00	14-29-20	132.76	65.74	132.61	N 81-15-21 E
C17	200.00	14-29-20	132.76	65.74	132.61	N 81-15-21 E
C18	200.00	14-29-20	132.76	65.74	132.61	N 81-15-21 E
C19	200.00	14-29-20	132.76	65.74	132.61	N 81-15-21 E
C20	200.00	14-29-20	132.76	65.74	132.61	N 81-15-21 E
C21	200.00	14-29-20	132.76	65.74	132.61	N 81-15-21 E
C22	200.00	14-29-20	132.76	65.74	132.61	N 81-15-21 E
C23	200.00	14-29-20	132.76	65.74	132.61	N 81-15-21 E
C24	200.00	14-29-20	132.76	65.74	132.61	N 81-15-21 E
C25	200.00	14-29-20	132.76	65.74	132.61	N 81-15-21 E
C26	200.00	14-29-20	132.76	65.74	132.61	N 81-15-21 E
C27	200.00	14-29-20	132.76	65.74	132.61	N 81-15-21 E
C28	200.00	14-29-20	132.76	65.74	132.61	N 81-15-21 E
C29	200.00	14-29-20	132.76	65.74	132.61	N 81-15-21 E
C30	200.00	14-29-20	132.76	65.74	132.61	N 81-15-21 E

STATE OF TEXAS
DEPARTMENT OF TRANSPORTATION
PARTITION PLAT
SLIDE NO. 1516A
F.B.C.P.R.

ALIANA DEVELOPMENT COMPANY
CALLED 79,678 ACRES
TRACT 1, PART THREE
F.B.C.P.R.

ALIANA DEVELOPMENT COMPANY
CALLED 79,678 ACRES
TRACT 1, PART THREE
F.B.C.P.R.

ALIANA DEVELOPMENT COMPANY
CALLED 79,678 ACRES
TRACT 1, PART THREE
F.B.C.P.R.

ALIANA DEVELOPMENT COMPANY
CALLED 79,678 ACRES
TRACT 1, PART THREE
F.B.C.P.R.

ALIANA SEC 35
A SUBDIVISION OF 18,913 ACRES OF LAND SITUATED IN THE
EAST PART OF SECTION 35, TOWNSHIP 10N, RANGE 10E,
COUNTY 10E, STATE OF TEXAS, BEING A PORTION OF TRACT 1, PART
THREE, SLIDE NO. 1516A, F.B.C.P.R., PLAT NO. 20070744-37,
STATE OF TEXAS DEPARTMENT OF TRANSPORTATION PARTITION PLAT, A
PLAT RECORDS OF FORT BEND COUNTY, TEXAS,
45 LOTS, 3 RESERVES (1.413 ACRES), 2 BLOCKS
DECEMBER 1, 2015
JOB NO. 1968-4035-403

OWNERS:
ALIANA DEVELOPMENT COMPANY
A TEXAS CORPORATION
E. TRAVIS STONE, JR., PRESIDENT
11200 RICHMOND AVENUE, SUITE 200
HOUSTON, TEXAS 77082
PH: (281) 809-7800

ENGINEER:
LJA Engineering, Inc.
11000 Katy Road, Suite 200
Houston, Texas 77058
PH: (281) 809-7800

SHILOH LAKE ESTATES
SECTION TWO
SLIDE NO. 1516A
F.B.C.P.R.

HOUSTONIAN GOLF CLUB
RESERVE "A"
SLIDE NO. 1516A
F.B.C.P.R.

RESERVE TABLE

RESERVE	ACREAGE	SD 11	TYPE
A	3.845	3.845	RESTRICTED TO LANDSCAPE/OPEN SPACE
B	0.071	3.092	RESTRICTED TO LANDSCAPE/OPEN SPACE
C	1.254	5.420	RESTRICTED TO LANDSCAPE/OPEN SPACE
TOTAL	5.170	12.357	