



Fort Bend County Engineering  
FORT BEND COUNTY, TEXAS

Richard W. Stolleis, P.E.  
County Engineer

October 26, 2015

Commissioner W. A. "Andy" Meyers  
Fort Bend County Precinct 3  
22333 Grand Corner Drive  
Katy, Texas 77494

**RE: Churchill Farms, Section 7 - Traffic Control Plan**

Dear Commissioner Meyers:

Fort Bend County Engineering has completed and recommends approval of the traffic control plan for the above referenced subdivision. The public hearing date for acceptance of the plan is being scheduled.

A copy of the traffic control plan is attached for your review. If you should have any questions, please give me a call.

Sincerely,

  
Jorge Salgado  
Construction Inspector  
Engineer Technician I

JS/clg

cc: Judge Robert E. Hebert, County Judge  
Marc Grant - FBC Road & Bridge  
Brian Fields - Signage Department  
File



# SECTION 5

Hunters Rock Ln.

# CHURCHILL FARMS, SECTION 7

## SECTION 7

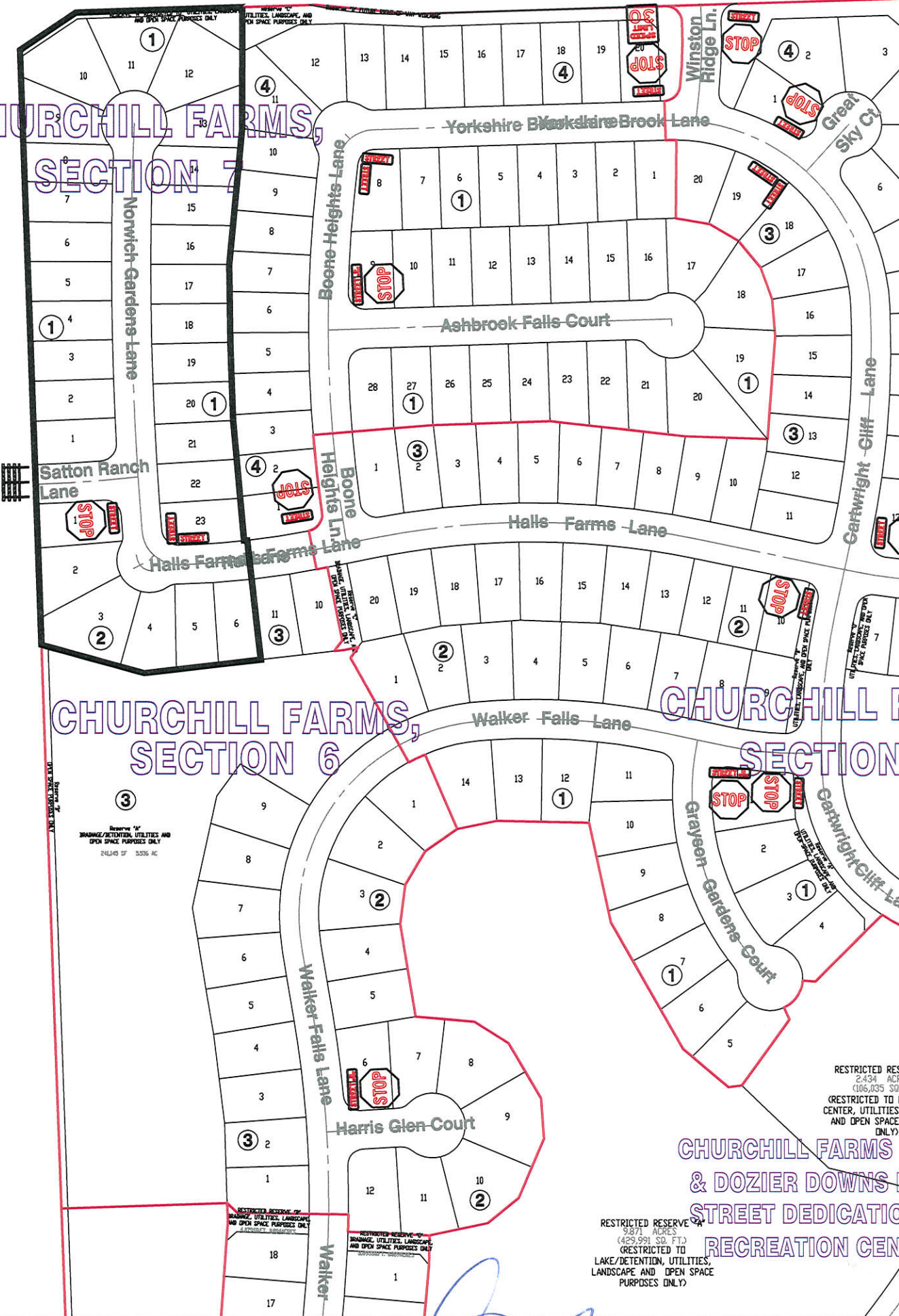
# CHURCHILL FARMS, SECTION 6

## SECTION 6

# CHURCHILL FARMS, SECTION 8

## SECTION 8

# CHURCHILL FARMS & DOZIER DOWNS STREET DEDICATION RECREATION CENTER



Reserve "A"  
BRIDGE/RETENTION, UTILITIES AND  
OPEN SPACE PURPOSES ONLY  
243,445 SQ. FT. 5.525 AC.

RESTRICTED RESERVE "B"  
BRIDGE, UTILITIES, LANDSCAPE,  
AND OPEN SPACE PURPOSES ONLY

RESTRICTED RESERVE "C"  
BRIDGE, UTILITIES, LANDSCAPE,  
AND OPEN SPACE PURPOSES ONLY

RESTRICTED RESERVE "D"  
9.871 ACRES  
(429,991 SQ. FT.)  
(RESTRICTED TO  
LAKE/RETENTION, UTILITIES,  
LANDSCAPE AND OPEN SPACE  
PURPOSES ONLY)

### Note:

The purpose of this traffic control plan is to establish traffic control for Churchill Farms, Section 7.

Drawn By: L. Brdecka

Date: 10-26-15

Approved By: Gerald P. Wilson, PE

Date: 27 Oct 2015

Scale

1" = 200'-0"

### Churchill Farms, Section 7 Control Map and Traffic Sign Layout

Fort Bend County Engineering Dept.  
301 Jackson Street  
Richmond, Texas 77469