



Fort Bend County Engineering  
FORT BEND COUNTY, TEXAS

Richard W. Stolleis, P.E.  
County Engineer

November 12, 2015

Commissioner James Patterson  
Fort Bend County Precinct 4  
12919 Dairy Ashford Road  
Sugar Land, Texas 77478

**RE: Berkeley Knoll Circle Street Dedication Sec. 1 - Traffic Control Plan  
Berkeley Knoll Circle Street Dedication Sec. 2  
Meadow Ranch Parkway Second Extension STD**

Dear Commissioner:

Fort Bend County Engineering has completed and recommends approval of the traffic control plans for the above referenced subdivisions. The public hearing date for acceptance of the plans is being scheduled.

A copy of the traffic control plans are attached for your review. If you should have any questions, please give me a call.

Sincerely,

  
Jorge Salgado  
Construction Inspector  
Engineer Technician I

JS/mjs

cc: Judge Robert E. Hebert, County Judge  
Marc Grant - FBC Road & Bridge  
Brian Fields - Signage Department  
File

# MEADOW RANCH PARKWAY APARTMENTS

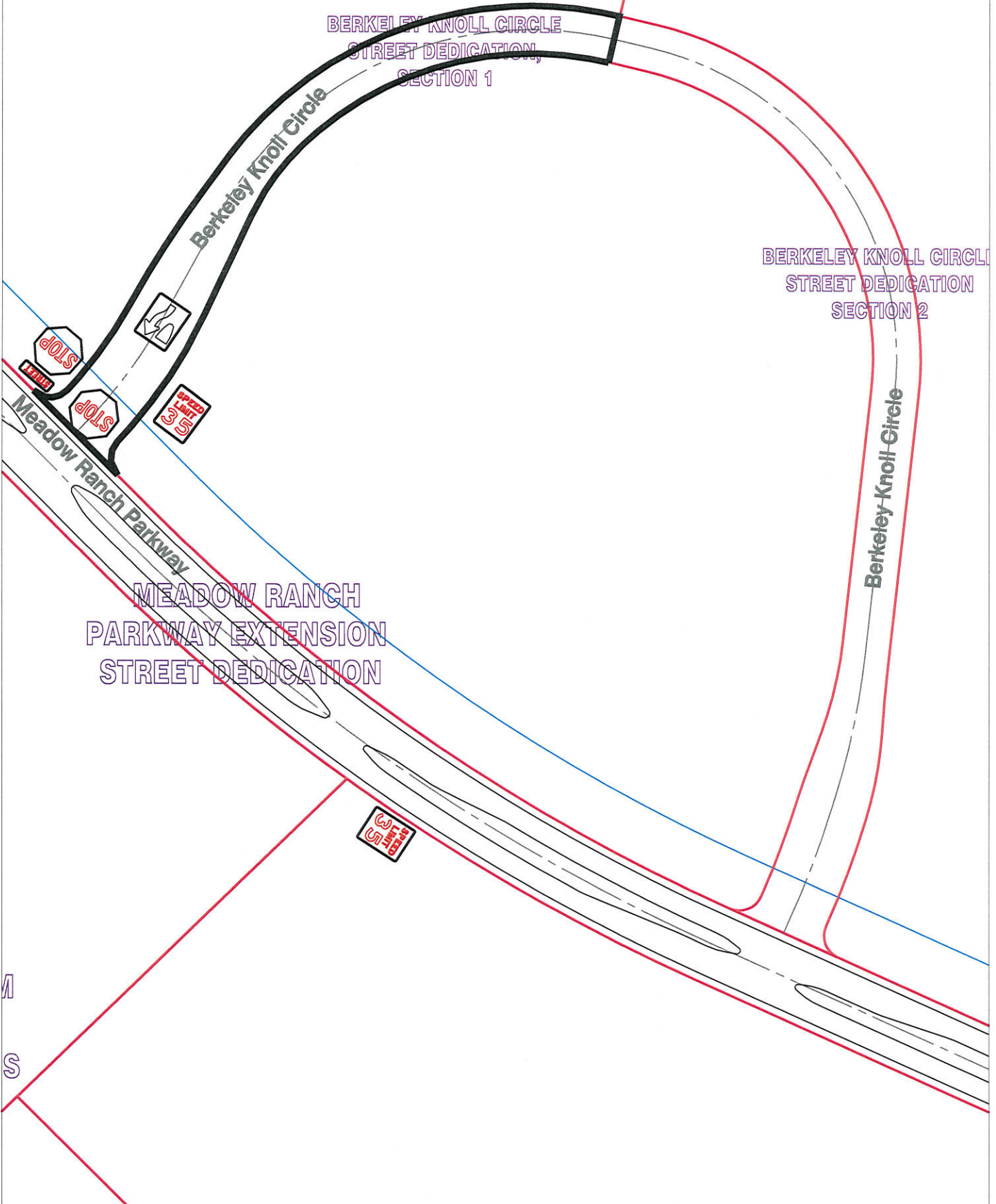


①

UNRESTRICTED  
RESERVE "A"  
20.7015 ACRES  
(901,759 SQ.FT.)

BERKELEY KNOLL CIRCLE  
STREET DEDICATION,  
SECTION 1

BERKELEY KNOLL CIRCLE  
STREET DEDICATION  
SECTION 2



MEADOW RANCH  
PARKWAY EXTENSION  
STREET DEDICATION

**Note:**

The purpose of this traffic control plan is to establish traffic control for Berkeley Knoll Circle Street Dedication, Section 1.

*JESC*

Drawn By: L. Brdecka

Date: 11-5-15

Approved By: Rick J. Stagle, PE PTOE

Date: *RJS 11/2/15*

Scale

1" = 200'-0"

**Berkeley Knoll Circle  
Street Dedication, Section 1  
Control Map and  
Traffic Sign Layout**

Fort Bend County Engineering Dept.  
301 Jackson Street  
Richmond, Texas 77469

# MEADOW RANCH PARKWAY APARTMENTS

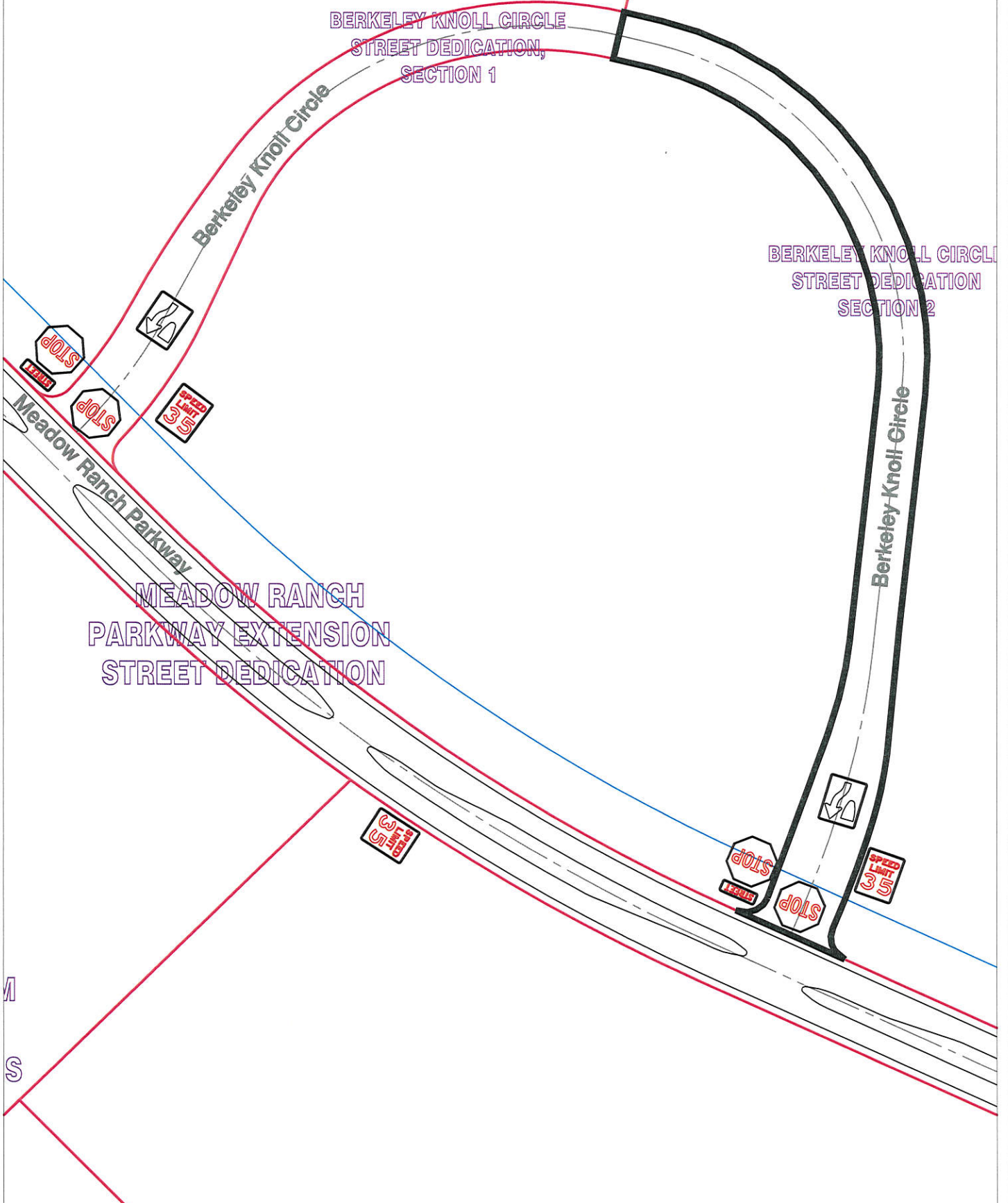


①

UNRESTRICTED  
RESERVE "A"  
20.7015 ACRES  
(901,759 SQ.FT.)

BERKELEY KNOLL CIRCLE  
STREET DEDICATION,  
SECTION 1

BERKELEY KNOLL CIRCLE  
STREET DEDICATION  
SECTION 2



MEADOW RANCH  
PARKWAY EXTENSION  
STREET DEDICATION

**Note:**

The purpose of this traffic control plan is to establish traffic control for Berkeley Knoll Circle Street Dedication, Section 2.

*J.S. 11/12/15*

Drawn By: L. Brdecka

Date: 11-12-15

Approved By: Rick J. Staigle, PE PTOE

Date: *AJS 11/12/15*

Scale

1" = 200'-0"

**Berkeley Knoll Circle  
Street Dedication, Section 2  
Control Map and  
Traffic Sign Layout**

Fort Bend County Engineering Dept.  
301 Jackson Street  
Richmond, Texas 77469

# LONG MEADOW FARMS, SECTION 30

Chamberlain



MEADOW RANCH PARKWAY THIRD EXTENSION STD

LANDMARK AT GRAND PARKWAY

Meadow Ranch Parkway

UNRESTRICTED RESERVE 'A' 186.75 ACRES 168,470 SQ. FT.

LONG PRAIRIE TRACE STREET DEDICATION

Long Prairie Trace

MEADOW RANCH PARKWAY SECOND EXTENSION STD

GALLERY FURNITURE

LONG MEADOW FARMS RETAIL

RESTRICTED RESERVE 'A' (RESTRICTED TO COMMERCIAL USES)

12.1489 ACRES / 529,206 SQ. FT.

BLOCK 1 UNRESTRICTED RESERVE 'W' 1.6296 ACRES 73,869 SQ. FT.

RESERVE 'A' 186.75 ACRES 168,470 SQ. FT.

**Note:**

The purpose of this traffic control plan is to establish traffic control for Meadow Ranch Parkway Third Extension.

*Jesc*

Drawn By: L. Brdecka  
 Date: 11-6-15  
 Approved By: Rick J. Staigle, PE PTOE  
 Date: *RJS 11/12/15*  
 Scale: 1" = 200'-0"

**Meadow Ranch Parkway Third Extension Control Map and Traffic Sign Layout**  
 Fort Bend County Engineering Dept.  
 301 Jackson Street  
 Richmond, Texas 77469