



Fort Bend County Engineering
FORT BEND COUNTY, TEXAS

Richard W. Stolleis, P.E.
County Engineer

October 19, 2015

Commissioner W. A. "Andy" Meyers
Fort Bend County Precinct 3
22333 Grand Corner Drive
Katy, Texas 77494

RE: Katy ISD Elem. School No. 23 (Rylander Elem), Addition of "NO PARKING" signs at Sandi Lane within Willow Trace Subdivision (Unrecorded)

Dear Commissioner Meyers:

Fort Bend County Engineering Department has completed the traffic control plan to restrict the parking on the both sides of Sandi Lane for approximately 1000 feet west of Westheimer Parkway. The public hearing date for acceptance for the plan will be scheduled on the next available Commissioner's Court Agenda

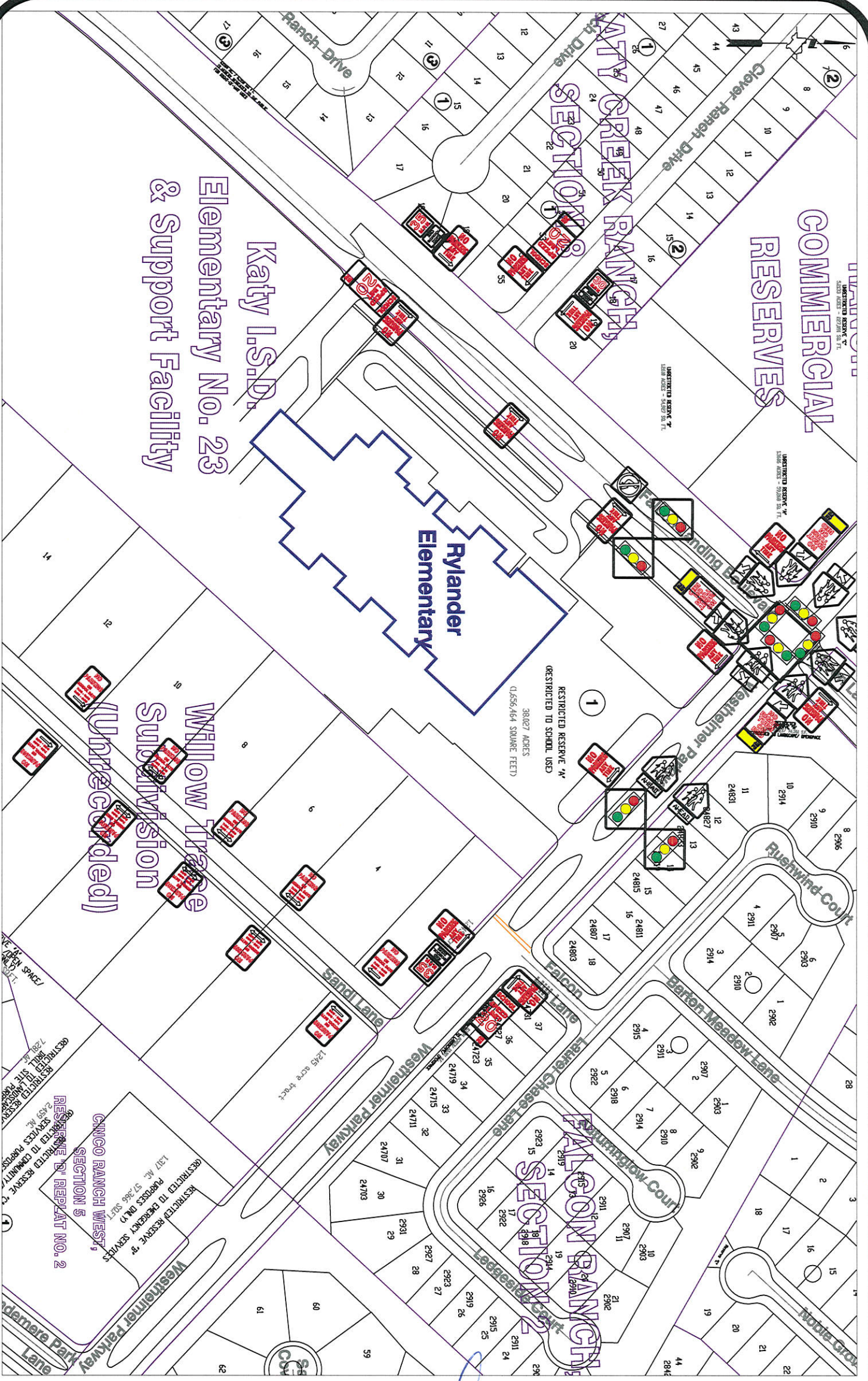
A copy of the traffic control plan is attached for your review. If we can be of further assistance please do not hesitate to contact me at 281-633-7528 or gerald.wilson@fortbendcountytexas.gov.

Sincerely,

Gerald P. Wilson, PE
Assistant County Engineer

cc: Judge Robert E. Hebert, County Judge
Marc Grant - FBC Road & Bridge
Brian Fields - Signage Department
File

301 Jackson St., Suite 401, Richmond, TX 77469
Phone 281-633-7500



Note:
 The purpose of this traffic control plan is to revise traffic control for Sandi Lane with the addition of No Parking signs as indicated on the drawing.

Drawn By: L. Brdecka
 Date: 10-2-15
 Approved By: Gerald P. Wilsdn, PE
 Date: *[Signature]*
 Scale: 1" = 200'-0"

Sandi Lane Control Map and Traffic Sign Layout
 Fort Bend County Engineering Dept.
 301 Jackson Street
 Richmond, Texas 77469