

PLAT RECORDING SHEET

PLAT NAME: Kingdom Heights, Section Three

PLAT NO: _____

ACREAGE: 27.2552

LEAGUE: William Andrews League, Samuel Isaacs League

ABSTRACT NUMBER: 3, 35

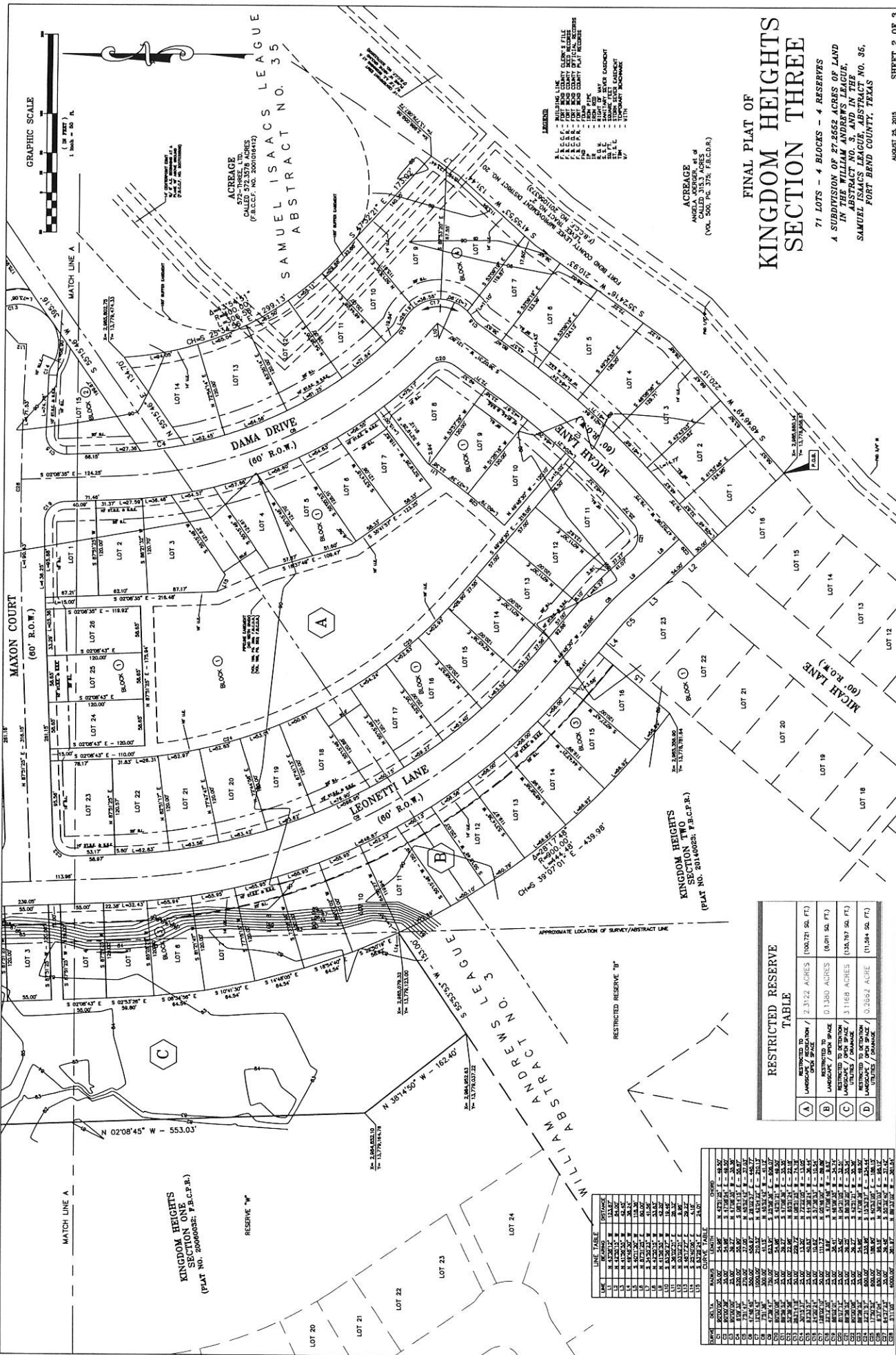
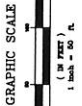
NUMBER OF BLOCKS: 4

NUMBER OF LOTS: 71

NUMBER OF RESERVES: 4

OWNERS: 572-Three, Ltd.

(DEPUTY CLERK)



FINAL PLAT OF KINGDOM HEIGHTS SECTION THREE

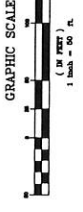
71 LOTS - 4 BLOCKS - 4 RESERVES
A SUBDIVISION OF 97.2552 ACRES OF LAND
IN THE WILLIAM ANDREWS LEAGUE,
ABSTRACT NO. 3, AND IN THE
SAMUEL ISAACS LEAGUE, ABSTRACT NO. 36,
FORT BEND COUNTY, TEXAS

ACREAGE
CALLED 315.3 ACRES
(VOL. 506, PG. 378, F.R.C.D.R.)

- LEGEND
- 1. BUILDING LINE
 - 2. LOT BOUNDARY
 - 3. BLOCK BOUNDARY
 - 4. SECTION BOUNDARY
 - 5. SURVEY LINE
 - 6. RIGHT OF WAY
 - 7. EASEMENT
 - 8. RIGHT OF WAY EASEMENT
 - 9. EASEMENT
 - 10. EASEMENT
 - 11. EASEMENT
 - 12. EASEMENT
 - 13. EASEMENT
 - 14. EASEMENT
 - 15. EASEMENT
 - 16. EASEMENT
 - 17. EASEMENT
 - 18. EASEMENT
 - 19. EASEMENT
 - 20. EASEMENT
 - 21. EASEMENT
 - 22. EASEMENT
 - 23. EASEMENT
 - 24. EASEMENT
 - 25. EASEMENT
 - 26. EASEMENT
 - 27. EASEMENT
 - 28. EASEMENT
 - 29. EASEMENT
 - 30. EASEMENT
 - 31. EASEMENT
 - 32. EASEMENT
 - 33. EASEMENT
 - 34. EASEMENT
 - 35. EASEMENT
 - 36. EASEMENT
 - 37. EASEMENT
 - 38. EASEMENT
 - 39. EASEMENT
 - 40. EASEMENT
 - 41. EASEMENT
 - 42. EASEMENT
 - 43. EASEMENT
 - 44. EASEMENT
 - 45. EASEMENT
 - 46. EASEMENT
 - 47. EASEMENT
 - 48. EASEMENT
 - 49. EASEMENT
 - 50. EASEMENT
 - 51. EASEMENT
 - 52. EASEMENT
 - 53. EASEMENT
 - 54. EASEMENT
 - 55. EASEMENT
 - 56. EASEMENT
 - 57. EASEMENT
 - 58. EASEMENT
 - 59. EASEMENT
 - 60. EASEMENT
 - 61. EASEMENT
 - 62. EASEMENT
 - 63. EASEMENT
 - 64. EASEMENT
 - 65. EASEMENT
 - 66. EASEMENT
 - 67. EASEMENT
 - 68. EASEMENT
 - 69. EASEMENT
 - 70. EASEMENT
 - 71. EASEMENT
 - 72. EASEMENT
 - 73. EASEMENT
 - 74. EASEMENT
 - 75. EASEMENT
 - 76. EASEMENT
 - 77. EASEMENT
 - 78. EASEMENT
 - 79. EASEMENT
 - 80. EASEMENT
 - 81. EASEMENT
 - 82. EASEMENT
 - 83. EASEMENT
 - 84. EASEMENT
 - 85. EASEMENT
 - 86. EASEMENT
 - 87. EASEMENT
 - 88. EASEMENT
 - 89. EASEMENT
 - 90. EASEMENT
 - 91. EASEMENT
 - 92. EASEMENT
 - 93. EASEMENT
 - 94. EASEMENT
 - 95. EASEMENT
 - 96. EASEMENT
 - 97. EASEMENT
 - 98. EASEMENT
 - 99. EASEMENT
 - 100. EASEMENT

RESTRICTED TO	ACRES	PERCENTAGE	ACRES	PERCENTAGE
A. LANDS TO BE SET ASIDE FOR PUBLIC USE	2.3722	2.3722	100.791	100.791
B. LANDS TO BE SET ASIDE FOR PUBLIC USE	0.1380	0.1380	100.791	100.791
C. LANDS TO BE SET ASIDE FOR PUBLIC USE	5.1168	5.1168	100.791	100.791
D. LANDS TO BE SET ASIDE FOR PUBLIC USE	0.2992	0.2992	100.791	100.791

LINE	BEARING	DISTANCE	CHORD
1	N 89°14'50" W	162.40'	162.40'
2	S 89°14'50" E	162.40'	162.40'
3	N 02°08'45" W	553.03'	553.03'
4	S 02°08'45" E	553.03'	553.03'
5	N 02°08'45" W	553.03'	553.03'
6	S 02°08'45" E	553.03'	553.03'
7	N 02°08'45" W	553.03'	553.03'
8	S 02°08'45" E	553.03'	553.03'
9	N 02°08'45" W	553.03'	553.03'
10	S 02°08'45" E	553.03'	553.03'
11	N 02°08'45" W	553.03'	553.03'
12	S 02°08'45" E	553.03'	553.03'
13	N 02°08'45" W	553.03'	553.03'
14	S 02°08'45" E	553.03'	553.03'
15	N 02°08'45" W	553.03'	553.03'
16	S 02°08'45" E	553.03'	553.03'
17	N 02°08'45" W	553.03'	553.03'
18	S 02°08'45" E	553.03'	553.03'
19	N 02°08'45" W	553.03'	553.03'
20	S 02°08'45" E	553.03'	553.03'
21	N 02°08'45" W	553.03'	553.03'
22	S 02°08'45" E	553.03'	553.03'
23	N 02°08'45" W	553.03'	553.03'
24	S 02°08'45" E	553.03'	553.03'
25	N 02°08'45" W	553.03'	553.03'
26	S 02°08'45" E	553.03'	553.03'
27	N 02°08'45" W	553.03'	553.03'
28	S 02°08'45" E	553.03'	553.03'
29	N 02°08'45" W	553.03'	553.03'
30	S 02°08'45" E	553.03'	553.03'
31	N 02°08'45" W	553.03'	553.03'
32	S 02°08'45" E	553.03'	553.03'
33	N 02°08'45" W	553.03'	553.03'
34	S 02°08'45" E	553.03'	553.03'
35	N 02°08'45" W	553.03'	553.03'
36	S 02°08'45" E	553.03'	553.03'
37	N 02°08'45" W	553.03'	553.03'
38	S 02°08'45" E	553.03'	553.03'
39	N 02°08'45" W	553.03'	553.03'
40	S 02°08'45" E	553.03'	553.03'
41	N 02°08'45" W	553.03'	553.03'
42	S 02°08'45" E	553.03'	553.03'
43	N 02°08'45" W	553.03'	553.03'
44	S 02°08'45" E	553.03'	553.03'
45	N 02°08'45" W	553.03'	553.03'
46	S 02°08'45" E	553.03'	553.03'
47	N 02°08'45" W	553.03'	553.03'
48	S 02°08'45" E	553.03'	553.03'
49	N 02°08'45" W	553.03'	553.03'
50	S 02°08'45" E	553.03'	553.03'
51	N 02°08'45" W	553.03'	553.03'
52	S 02°08'45" E	553.03'	553.03'
53	N 02°08'45" W	553.03'	553.03'
54	S 02°08'45" E	553.03'	553.03'
55	N 02°08'45" W	553.03'	553.03'
56	S 02°08'45" E	553.03'	553.03'
57	N 02°08'45" W	553.03'	553.03'
58	S 02°08'45" E	553.03'	553.03'
59	N 02°08'45" W	553.03'	553.03'
60	S 02°08'45" E	553.03'	553.03'
61	N 02°08'45" W	553.03'	553.03'
62	S 02°08'45" E	553.03'	553.03'
63	N 02°08'45" W	553.03'	553.03'
64	S 02°08'45" E	553.03'	553.03'
65	N 02°08'45" W	553.03'	553.03'
66	S 02°08'45" E	553.03'	553.03'
67	N 02°08'45" W	553.03'	553.03'
68	S 02°08'45" E	553.03'	553.03'
69	N 02°08'45" W	553.03'	553.03'
70	S 02°08'45" E	553.03'	553.03'
71	N 02°08'45" W	553.03'	553.03'
72	S 02°08'45" E	553.03'	553.03'
73	N 02°08'45" W	553.03'	553.03'
74	S 02°08'45" E	553.03'	553.03'
75	N 02°08'45" W	553.03'	553.03'
76	S 02°08'45" E	553.03'	553.03'
77	N 02°08'45" W	553.03'	553.03'
78	S 02°08'45" E	553.03'	553.03'
79	N 02°08'45" W	553.03'	553.03'
80	S 02°08'45" E	553.03'	553.03'
81	N 02°08'45" W	553.03'	553.03'
82	S 02°08'45" E	553.03'	553.03'
83	N 02°08'45" W	553.03'	553.03'
84	S 02°08'45" E	553.03'	553.03'
85	N 02°08'45" W	553.03'	553.03'
86	S 02°08'45" E	553.03'	553.03'
87	N 02°08'45" W	553.03'	553.03'
88	S 02°08'45" E	553.03'	553.03'
89	N 02°08'45" W	553.03'	553.03'
90	S 02°08'45" E	553.03'	553.03'
91	N 02°08'45" W	553.03'	553.03'
92	S 02°08'45" E	553.03'	553.03'
93	N 02°08'45" W	553.03'	553.03'
94	S 02°08'45" E	553.03'	553.03'
95	N 02°08'45" W	553.03'	553.03'
96	S 02°08'45" E	553.03'	553.03'
97	N 02°08'45" W	553.03'	553.03'
98	S 02°08'45" E	553.03'	553.03'
99	N 02°08'45" W	553.03'	553.03'
100	S 02°08'45" E	553.03'	553.03'



WEMBLEY LEAGUE
WILLIAM ANDREWS LEAGUE NO. 3

ACREAGE
CALLED 572.3578 ACRES
(F.B.C.F. NO. 200106412)

WEMBLEY WAY
(60' R.O.W.)
(PLAT NO. 201206239; F.B.C.P.R.)

KINGDOM HEIGHTS
SECTION ONE
(PLAT NO. 20060032; F.B.C.P.R.)

KINGDOM HEIGHTS BOULEVARD
(100' R.O.W.)
(PLAT NO. 20060032; F.B.C.P.R.)

WEMBLEY WAY
(80' R.O.W.)
(PLAT NO. 20060032; F.B.C.P.R.)

WICKSHIRE DRIVE
(60' R.O.W.)
(PLAT NO. 20060032; F.B.C.P.R.)

WILLIAM ANDREWS LEAGUE
SAMUEL ISAACS LEAGUE NO. 35

ACREAGE
CALLED 572.3578 ACRES
(F.B.C.F. NO. 200106412)

KINGDOM HEIGHTS BOULEVARD
(100' R.O.W.)

FINAL PLAT OF KINGDOM HEIGHTS SECTION THREE

71 LOTS - 4 BLOCKS - 4 RESERVES
A SUBDIVISION OF 27.5552 ACRES OF LAND
IN THE WILLIAM ANDREWS LEAGUE,
SAMUEL ISAACS LEAGUE ABSTRACT NO. 35,
FORT BEND COUNTY, TEXAS

AUGUST 28, 2015 SHEET 3 OF 3

