

PLAT RECORDING SHEET

PLAT NAME: Irby Cobb Boulevard Street Dedication No. Two

PLAT NO: _____

ACREAGE: 3.451

LEAGUE: Eugene Wheat Survey, Wiley Martin League

ABSTRACT NUMBER: 396, 56

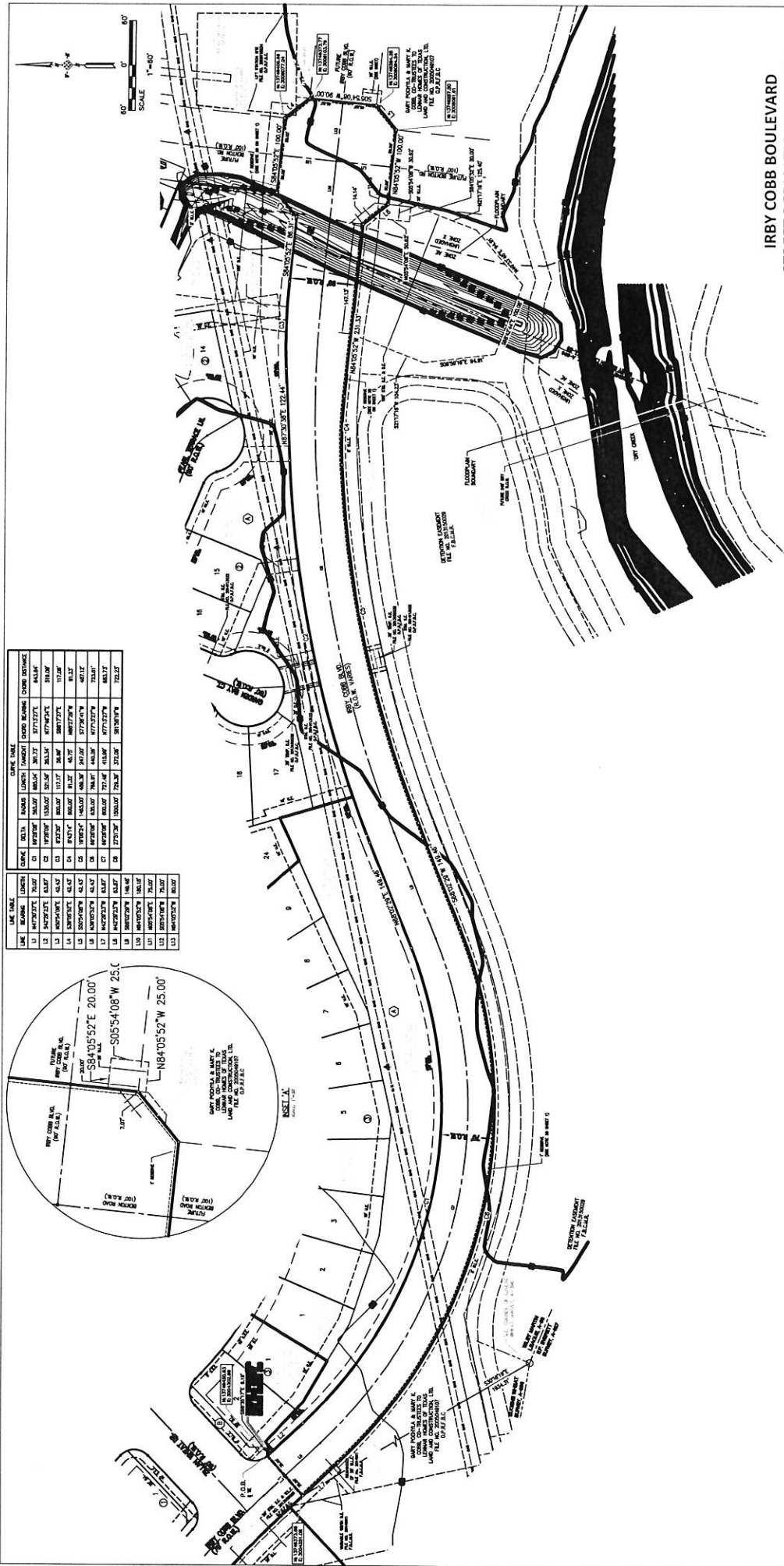
NUMBER OF BLOCKS: 0

NUMBER OF LOTS: 0

NUMBER OF RESERVES: 0

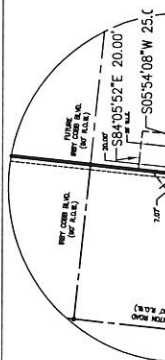
OWNERS: Lennar Homes of Texas Land and Construction, Ltd.

(DEPUTY CLERK)



LINE	BEARING	LENGTH	CHORD BEARING	CHORD DISTANCE
1	S84°05'52"E	20.00'	S84°05'52"E	20.00'
2	S05°54'08"W	25.00'	S05°54'08"W	25.00'
3	N84°05'52"W	25.00'	N84°05'52"W	25.00'
4	S84°05'52"E	20.00'	S84°05'52"E	20.00'
5	S05°54'08"W	25.00'	S05°54'08"W	25.00'
6	N84°05'52"W	25.00'	N84°05'52"W	25.00'
7	S84°05'52"E	20.00'	S84°05'52"E	20.00'
8	S05°54'08"W	25.00'	S05°54'08"W	25.00'
9	N84°05'52"W	25.00'	N84°05'52"W	25.00'
10	S84°05'52"E	20.00'	S84°05'52"E	20.00'
11	S05°54'08"W	25.00'	S05°54'08"W	25.00'
12	N84°05'52"W	25.00'	N84°05'52"W	25.00'
13	S84°05'52"E	20.00'	S84°05'52"E	20.00'
14	S05°54'08"W	25.00'	S05°54'08"W	25.00'
15	N84°05'52"W	25.00'	N84°05'52"W	25.00'
16	S84°05'52"E	20.00'	S84°05'52"E	20.00'
17	S05°54'08"W	25.00'	S05°54'08"W	25.00'
18	N84°05'52"W	25.00'	N84°05'52"W	25.00'
19	S84°05'52"E	20.00'	S84°05'52"E	20.00'
20	S05°54'08"W	25.00'	S05°54'08"W	25.00'
21	N84°05'52"W	25.00'	N84°05'52"W	25.00'
22	S84°05'52"E	20.00'	S84°05'52"E	20.00'
23	S05°54'08"W	25.00'	S05°54'08"W	25.00'
24	N84°05'52"W	25.00'	N84°05'52"W	25.00'

LINE	BEARING	LENGTH	CHORD BEARING	CHORD DISTANCE
1	S84°05'52"E	20.00'	S84°05'52"E	20.00'
2	S05°54'08"W	25.00'	S05°54'08"W	25.00'
3	N84°05'52"W	25.00'	N84°05'52"W	25.00'
4	S84°05'52"E	20.00'	S84°05'52"E	20.00'
5	S05°54'08"W	25.00'	S05°54'08"W	25.00'
6	N84°05'52"W	25.00'	N84°05'52"W	25.00'
7	S84°05'52"E	20.00'	S84°05'52"E	20.00'
8	S05°54'08"W	25.00'	S05°54'08"W	25.00'
9	N84°05'52"W	25.00'	N84°05'52"W	25.00'
10	S84°05'52"E	20.00'	S84°05'52"E	20.00'
11	S05°54'08"W	25.00'	S05°54'08"W	25.00'
12	N84°05'52"W	25.00'	N84°05'52"W	25.00'
13	S84°05'52"E	20.00'	S84°05'52"E	20.00'
14	S05°54'08"W	25.00'	S05°54'08"W	25.00'
15	N84°05'52"W	25.00'	N84°05'52"W	25.00'
16	S84°05'52"E	20.00'	S84°05'52"E	20.00'
17	S05°54'08"W	25.00'	S05°54'08"W	25.00'
18	N84°05'52"W	25.00'	N84°05'52"W	25.00'
19	S84°05'52"E	20.00'	S84°05'52"E	20.00'
20	S05°54'08"W	25.00'	S05°54'08"W	25.00'
21	N84°05'52"W	25.00'	N84°05'52"W	25.00'
22	S84°05'52"E	20.00'	S84°05'52"E	20.00'
23	S05°54'08"W	25.00'	S05°54'08"W	25.00'
24	N84°05'52"W	25.00'	N84°05'52"W	25.00'



**IRBY COBB BOULEVARD
STREET DEDICATION NO. TWO**

A SUBDIVISION OF
3.451 ACRES
1,930 L.F. OF R.O.W.
9 BLOCKS, 9 LOTS AND 9 RESERVES
EUGENE WHEAT SURVEY, A-396
AND THE
WILEY MARTIN LEAGUE, A-56
FORT BEND COUNTY, TEXAS

OWNER: LENNAR HOMES OF TEXAS LAND AND CONSTRUCTION, LTD.
PLANNER: KERRY R. GILBERT & ASSOCIATES, INC.
ENGINEER: **IDS** Engineering Group
13333 McAndrews
Houston, TX 77060
JANUARY 5, 2015 IDS JOB NO. 071-132-00