

PLAT RECORDING SHEET

PLAT NAME: Westheimer Lakes North Commercial Reserve Replat No. 1

PLAT NO: _____

ACREAGE: 3.3169

LEAGUE: John Foster Survey

ABSTRACT NUMBER: 574

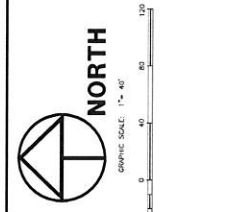
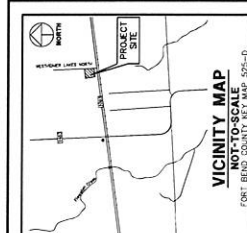
NUMBER OF BLOCKS: 1

NUMBER OF LOTS: 0

NUMBER OF RESERVES: 2

OWNERS: Signal Katy, LLC

(DEPUTY CLERK)



VICINITY MAP
NOT-TO-SCALE
FORT BEND COUNTY KEY MAP S2E-D

APPROVED BY THE COMMISSIONER, COURT OF FORT BEND COUNTY, TEXAS, THIS DAY OF _____ 2015.

By: _____
County Clerk

By: _____
County Clerk

APPROVED BY THE COMMISSIONER, COURT OF FORT BEND COUNTY, TEXAS, THIS DAY OF _____ 2015.

By: _____
County Clerk

By: _____
County Clerk

APPROVED BY THE COMMISSIONER, COURT OF FORT BEND COUNTY, TEXAS, THIS DAY OF _____ 2015.

By: _____
County Clerk

By: _____
County Clerk

APPROVED BY THE COMMISSIONER, COURT OF FORT BEND COUNTY, TEXAS, THIS DAY OF _____ 2015.

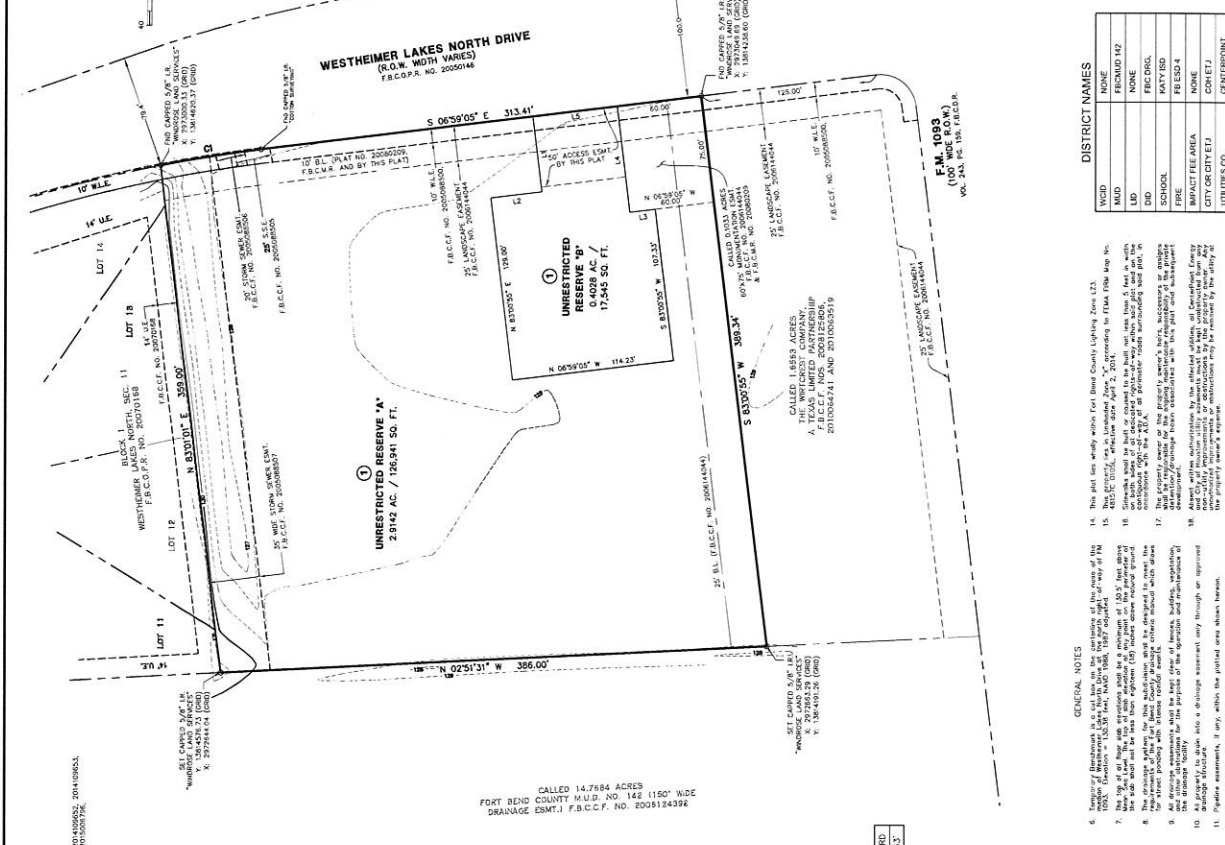
By: _____
County Clerk

By: _____
County Clerk

APPROVED BY THE COMMISSIONER, COURT OF FORT BEND COUNTY, TEXAS, THIS DAY OF _____ 2015.

By: _____
County Clerk

By: _____
County Clerk



UNRESTRICTED RESERVE "A" - 2.9142 AC. / 126,941 SQ. FT.

UNRESTRICTED RESERVE "B" - 4.028 AC. / 173,928 SQ. FT.

UNRESTRICTED RESERVE "C" - 1.8584 ACRES

WESTHEIMER LAKES NORTH DRIVE (R.O.W. WITH VARIES)

FM 1083 (100' WIDE R.O.W.)

GENERAL NOTES

- This plat is filed with the Fort Bend County Clerk's Office for the purpose of recording the same.
- The plat is subject to the provisions of the Texas State Peace Constable System, which shall be in effect on the date of recording of this plat.
- The plat is subject to the provisions of the Texas State Peace Constable System, which shall be in effect on the date of recording of this plat.
- The plat is subject to the provisions of the Texas State Peace Constable System, which shall be in effect on the date of recording of this plat.
- The plat is subject to the provisions of the Texas State Peace Constable System, which shall be in effect on the date of recording of this plat.

CURVE TABLE

CURVE	RADIUS	DELTA	ARC	BEARING	CHORD
C1	1303.00	104.817	71.64	S 092°17' E	71.63

LINE TABLE

LINE	BEARING	DISTANCE
1	S 092°17' E	71.63
2	S 092°17' E	71.63
3	S 092°17' E	71.63
4	S 092°17' E	71.63
5	S 092°17' E	71.63

By: _____
County Clerk

By: _____
County Clerk

By: _____
County Clerk

By: _____
County Clerk

WESTHEIMER LAKES NORTH COMMERCIAL RESERVE REPLAT NO 1

A SUBDIVISION OF 3.3168 ACRES OR 144,486 SQ. FT. OF LAND, BEING A REPLAT OF RESTRICTED RESERVE "A", BLOCK 1, WESTHEIMER LAKES NORTH COMMERCIAL RESERVE, PLAT NO. 20080203, FORT BEND COUNTY, TEXAS, SITUATED IN THE JOHN FOSTER SURVEY, ABSTRACT NO. 574, FORT BEND COUNTY, TEXAS.

REASON FOR REPLAT: TO CREATE TWO (2) UNRESTRICTED RESERVES

OLITS 1 BLOCK 2 RESERVES

JULY 2015

Surveyors
Windrose Land Services, Inc.
3000 Westport, Suite 205
Houston, Texas 77055
Phone (713) 458-2261 Fax (713) 446-1157
Firm Registration No. 10108800

Owners
Signal Kay, LLC
7901 Corporate Drive, Suite 248
Houston, Texas 77055
Phone (281) 555-0488

DISTRICT NAMES

UNSD	UNSD 142
MD	NONE
DD	FEC DRIL
ED	MAY EED
FE	FEC S4
FE	IMPACT FEELARIA
FE	CITY OR CITY E/J
FE	CENTERPOINT

Professional Development Consultants
Land Surveying, Planning, Project Management, GIS Services

By: _____
County Clerk

By: _____
County Clerk

By: _____
County Clerk

By: _____
County Clerk

By: _____
County Clerk

By: _____
County Clerk

By: _____
County Clerk

By: _____
County Clerk